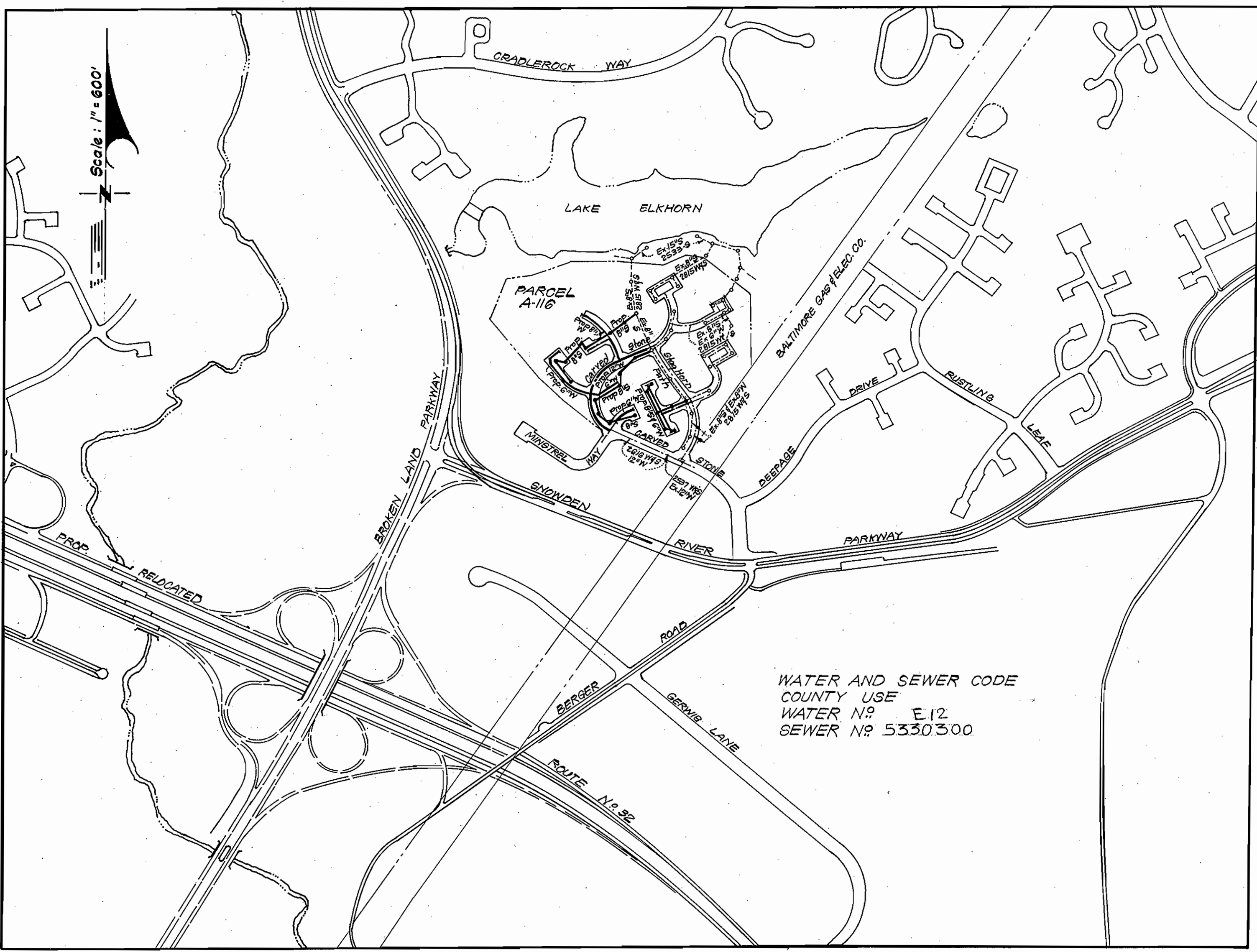


SEWER HOUSE CONNECTION
 LOT 240 LOT 241
 NOT TO SCALE



WATER AND SEWER CODE
 COUNTY USE
 WATER N^o E.12
 SEWER N^o 5330300

GENERAL NOTES

1. All water mains to be C.I.P., D.I.P. or A.C.P. unless otherwise shown.
2. Top of all water mains to have a minimum of 3.5 ft. cover unless otherwise noted.
3. All valves shall be strapped to face in accordance with standard details.
4. Block all fittings with concrete, see standards bound in specifications.
5. Bury line elevations on fire hydrants shall be set to the elevations shown on the drawings. All fire hydrants shall be strapped and buttressed with concrete in accordance with standard details. Soil around the fire hydrants to be compacted in accordance with Section 5-15 of the standard specifications.
6. All sewer mains shall be C.S.P.K., V.C.P.K., or A.C.P. class 2400 unless otherwise noted.
7. The contractor shall provide a joint in all sewer mains within 2'-0" of exterior manhole wall.
8. All manholes shall be 4'-0" inside diameter, unless otherwise noted.
9. Approximate locations of existing mains are shown. The contractor shall take all necessary precautions to protect existing mains and services and maintain uninterrupted supply. Any damage incurred shall be reported immediately.
10. All horizontal controls are based on Maryland State Coordinates.
11. All vertical controls are based on U.S. G.S. Datum.
12. All pipe elevations shown are invert elevations.
13. Clear all utilities by a minimum of 6", clear all poles by 2'-0" minimum or tunnel as required.
14. For all standard details see standards bound in specifications.
15. Contractor shall locate existing utilities in advance of construction operations in the vicinity of proposed utilities.
16. Contractor shall notify the following utilities or agencies at least five (5) days before starting work shown on these plans:
 State Highway Administration - 531-5533
 Baltimore Gas and Electric Company - Underground Electric Distribution Engineering - "Damage Control" - 234-5691
 Baltimore Gas and Electric Company - Underground Gas Distribution Engineering - 552-0100
 Chesapeake and Potomac Telephone Co. - 725-9376
 American Telephone and Telegraph - Cable Location Division 301-393-3553
 Colonial Pipeline Company - 781-4641.
17. Trees are to be protected from damage to maximum extent. Trees located within the construction strip are not to be removed or damaged by the contractor.
18. Contractor shall remove trees, stumps and rocks along line of excavation as directed by the Engineer. Payment for such removal shall be included in the unit price bid for excavation and backfill for water and sewer mains.
19. Place regulation "Men Working" and warning signs as required to comply with Maryland State Highway Administration Manual of Traffic Control for Highway Construction and Maintenance Operations.

QUANTITIES			
ITEM	BID	AS-BUILT	MATERIAL/SUPPLIER
12" Water	908 L.F.	999 L.F.	U.S. Pipe - D.I.P. Tylon
8" Water	480 L.F.	480 L.F.	" " " " "
6" Water	1812 L.F.	1934.5 L.F.	" " " " "
8" Sewer	2820 L.F.	2669 L.F.	Johns-Manville A.C.P.
F.H.	7	?	AMERICAN DARLING.

CONTRACT NO. 2846 D W8S
VILLAGE OF OWEN BROWN
HOWARD COUNTY, MARYLAND
DEPARTMENT OF PUBLIC WORKS



J. W. [Signature]
 3-21-79

COLUMBIA V.O.B.
 RESUBDIVISION OF PARCEL A-116
 SECTION 2 AREA 1
 LOTS A-117 THRU A-232
 Contract No. 2 B 46-D-W8S

10/16/79 Sewer House Conn.
 No. Date REVISION

CLARK • FINEFROCK & SACKETT
 ENGINEERS • PLANNERS • SURVEYORS
 11315 LOCKWOOD DRIVE • SILVER SPRING, MARYLAND • (301) 593-3400

DEPARTMENT OF PUBLIC WORKS
 HOWARD COUNTY, MARYLAND
F. N. [Signature] 4-16-79
 DIRECTOR OF PUBLIC WORKS DATE
W. O. [Signature] 4-16-79
 CHIEF, BUREAU OF ENGINEERING DATE

CONTRACT NO. 2846 D W8S

**PLAN OF
 WATER & SEWER MAINS**

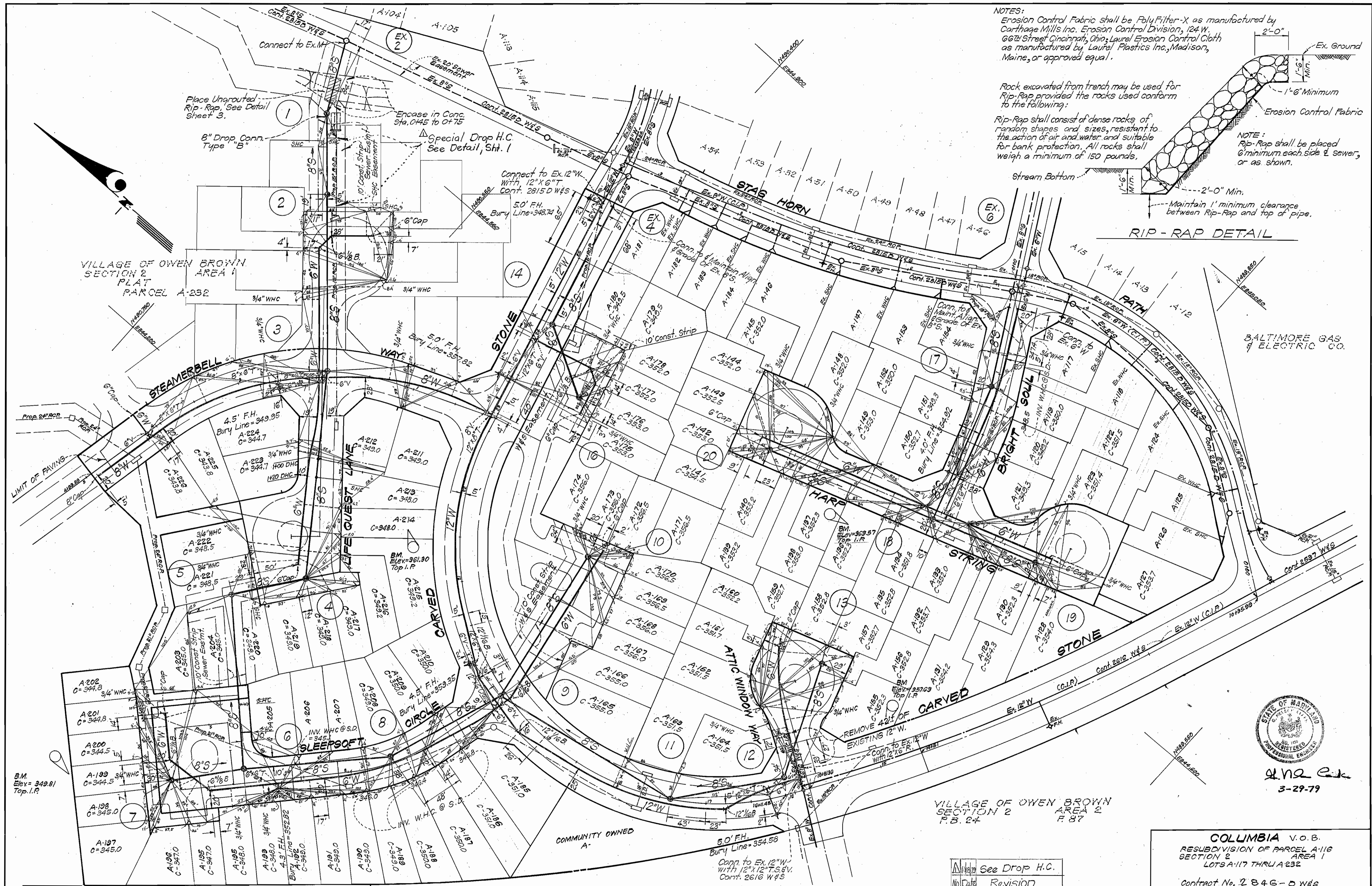
**COLUMBIA
 VILLAGE OF OWEN BROWN
 ELECTION DISTRICT - GUILFORD No. 6**

DRAWING NO. 1 OF 3	SCALE
--------------------	-------

AS BUILT 3/12/80 N.W.

WS 846-WS/1

WS 846-W6/2



NOTES:
 Erosion Control Fabric shall be Poly Filter-X as manufactured by Carthage Mills Inc. Erosion Control Division, 124 W. 66th Street Cincinnati, Ohio; Laurel Erosion Control Cloth as manufactured by Laurel Plastics Inc., Madison, Maine, or approved equal.

Rock excavated from trench may be used for Rip-Rap provided the rocks used conform to the following:
 Rip-Rap shall consist of dense rocks of random shapes and sizes, resistant to the action of air and water and suitable for bank protection. All rocks shall weigh a minimum of 150 pounds.

NOTE:
 Rip-Rap shall be placed 6" minimum each side of sewer, or as shown.

Stream Bottom

2'-0" Min.
 1'-6" Minimum
 Maintain 1' minimum clearance between Rip-Rap and top of pipe.

RIP-RAP DETAIL



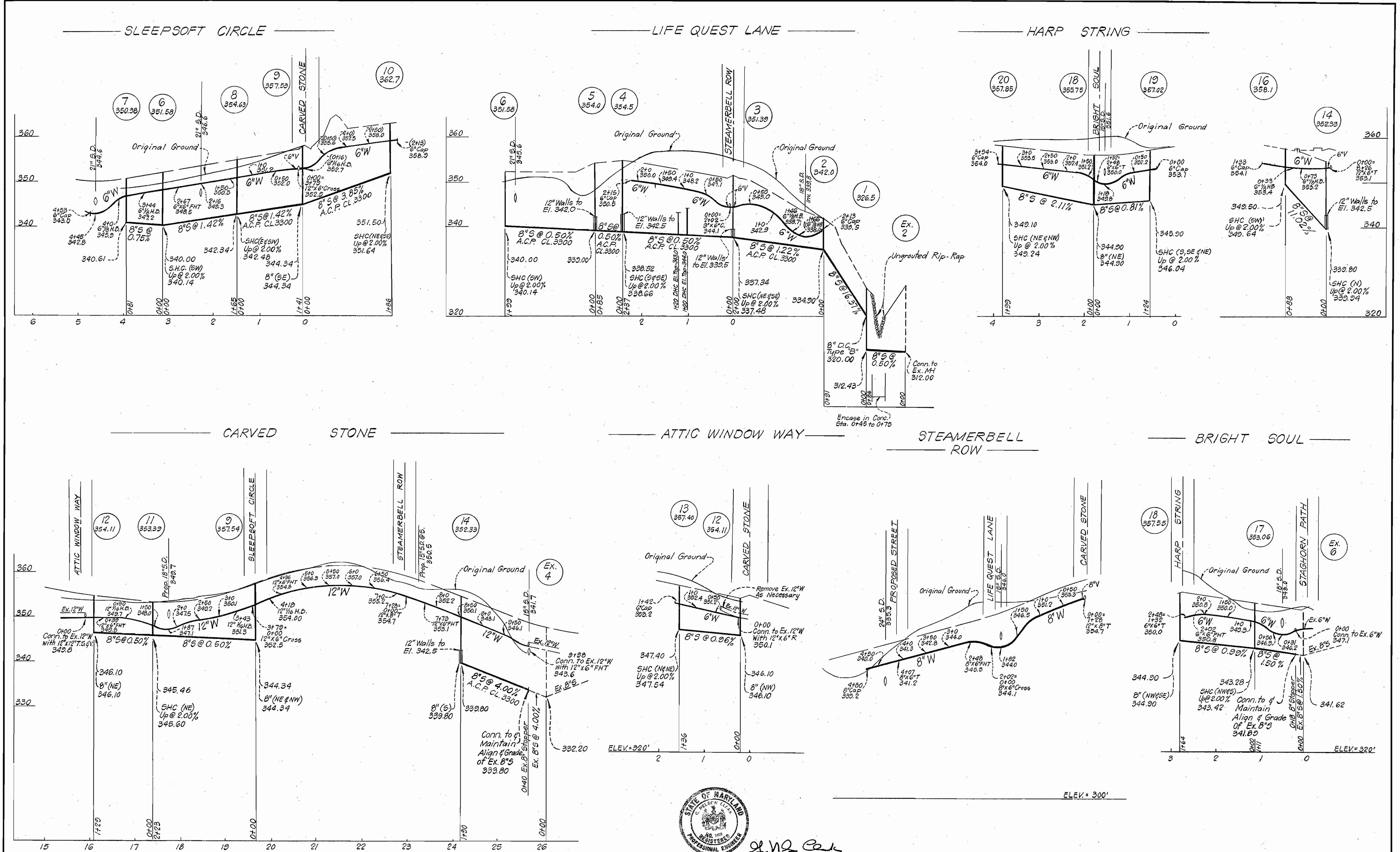
W. H. E. J.
 3-29-79

VILLAGE OF OWEN BROWN
 SECTION 2
 AREA 1
 PARCELS A-197 TO A-224

COLUMBIA V.O.B.
 RESUBDIVISION OF PARCEL A-116
 SECTION 2
 AREA 1
 LOTS A-117 THRU A-232
 Contract No. 2846-D W&S

CLARK • FINEFROCK & SACKETT ENGINEERS • PLANNERS • SURVEYORS 11315 LOCKWOOD DRIVE • SILVER SPRING, MARYLAND • (301) 593-3400	DEPARTMENT OF PUBLIC WORKS HOWARD COUNTY, MARYLAND <i>W. F. N...</i> 4-16-79 DIRECTOR OF PUBLIC WORKS DATE	CONTRACT NO. 2846 D W&S	PLAN OF WATER & SEWER MAINS	COLUMBIA VILLAGE OF OWEN BROWN ELECTION DISTRICT - GUILFORD No. 6	DRAWING NO. 2 OF 3	SCALE 1" = 50'
	See Drop H.C. No. 2616 Revision	Contract No. 2846-D W&S		AS BUILT 9/7/80 NW		

WS 846 - WS/3



J. H. Cole
3-29-79

CLARK • FINEFROCK & SACKETT ENGINEERS • PLANNERS • SURVEYORS 11315 LOCKWOOD DRIVE • SILVER SPRING, MARYLAND • (301) 593-3400	DEPARTMENT OF PUBLIC WORKS HOWARD COUNTY, MARYLAND <i>W. F. Nimmer</i> 4-16-79 DIRECTOR OF PUBLIC WORKS DATE	CONTRACT NO. 846 D WS	PROFILES OF WATER & SEWER MAINS	COLUMBIA VILLAGE OF OWEN BROWN ELECTION DISTRICT - GUILFORD No. 6	DRAWING NO. 3	SCALE
					OF 3	HOR.: 1"=100' VER.: 1"=10'

AS BUILT