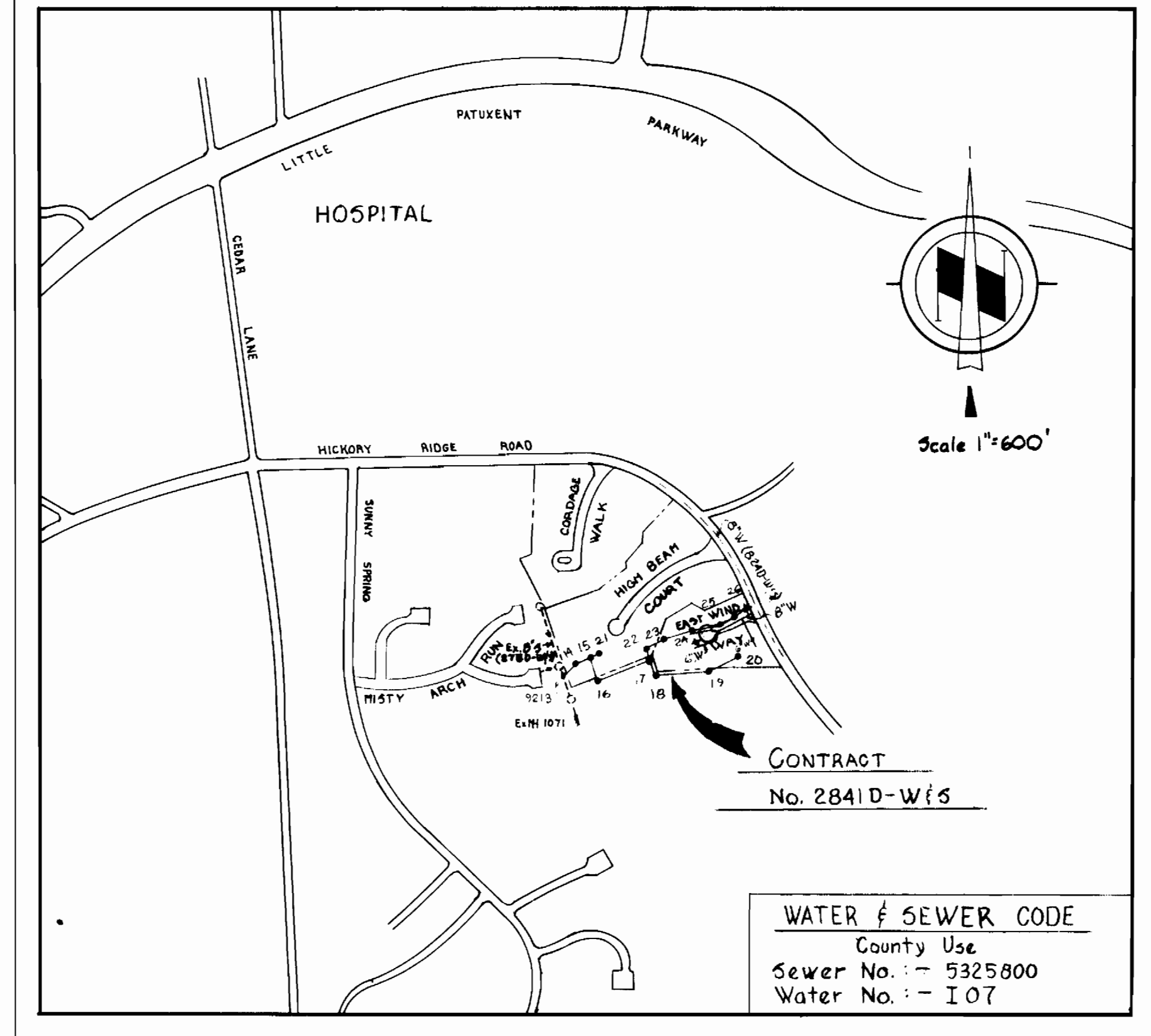


BENCH MARKS

W.R.A. B.M. *F-9 Elev. 919.21
 a-cut on NE corner Headwall between lots 22 & 23, at NE Property Line, Hickory Ridge, Section 1, Area 5.
 W.R.A. B.M. *F-10 Elev. 411.02
 a-cut on NE corner Headwall between lots 13 & 14, at NE Property Line, Hickory Ridge, Section 1, Area 5.
 W.R.A. B.M. *F-11 Elev. 439.26
 a-cut top Pipe, 26' Right of Sta. 19+80 Hickory Ridge Road



LOCATION MAP

SCALE: 1" = 600'

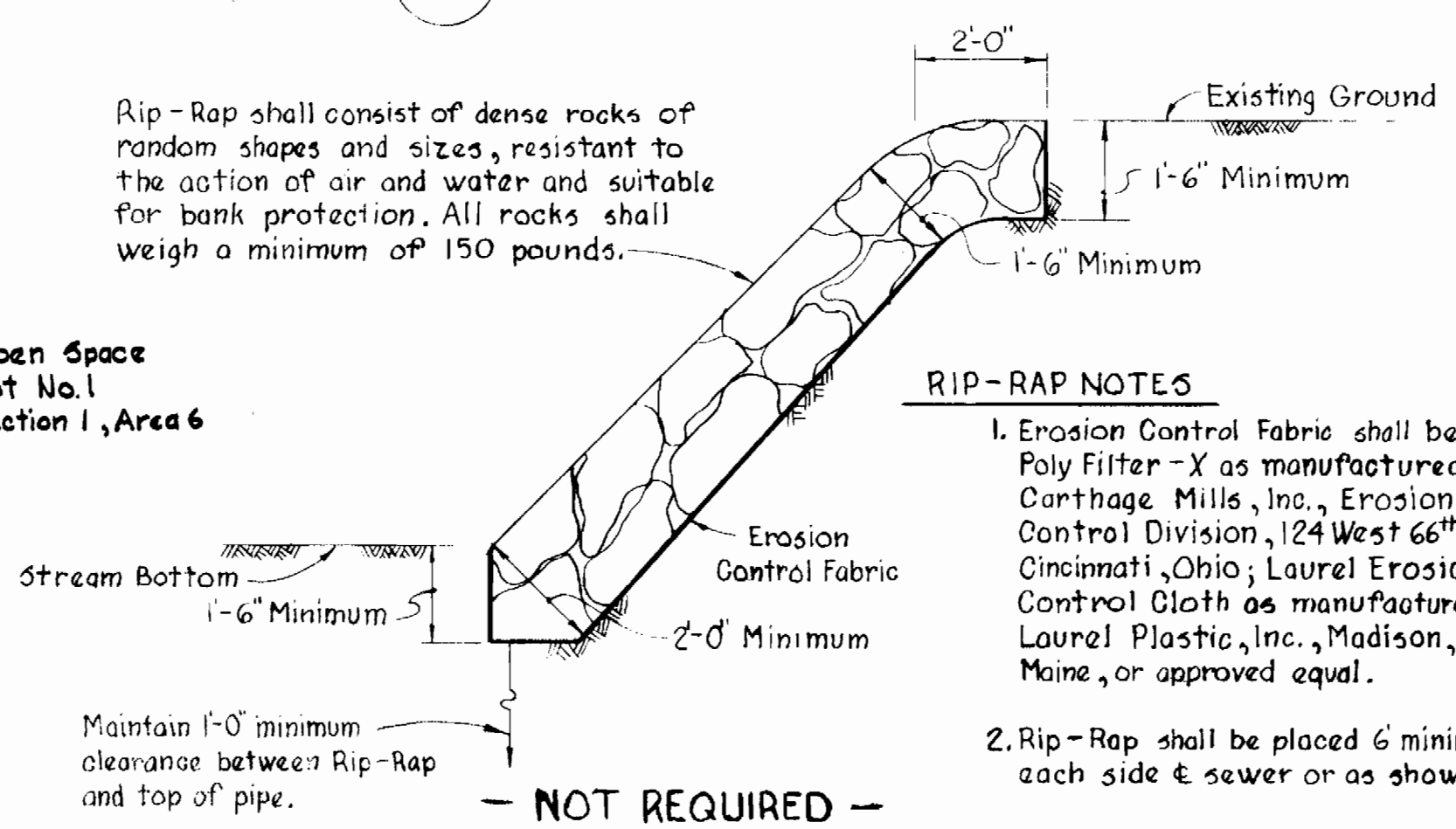
GENERAL NOTES

- APPROXIMATE LOCATION OF EXISTING MAINS ARE SHOWN. THE CONTRACTOR SHALL TAKE ALL NECESSARY PRECAUTIONS TO PROTECT EXISTING MAINS AND SERVICES AND MAINTAIN UNINTERRUPTED SUPPLY. ANY DAMAGE INCURRED SHALL BE REPAIRED IMMEDIATELY.
- ALL PIPE ELEVATIONS SHOWN ARE INVERT ELEVATIONS.
- THE CONTRACTOR SHALL LOCATE EXISTING UTILITIES A MINIMUM OF TWO WEEKS IN ADVANCE OF CONSTRUCTION OPERATIONS IN VICINITY OF UTILITIES.
- THE CONTRACTOR SHALL NOTIFY THE FOLLOWING UTILITIES OR AGENCIES AT LEAST FIVE DAYS BEFORE STARTING WORK SHOWN ON THESE PLANS:
 BALTIMORE GAS AND ELECTRIC COMPANY - UNDERGROUND ELECTRIC DISTRIBUTION ENGINEERING DAMAGE CONTROL 294-5691
 UNDERGROUND GAS DISTRIBUTION ENGINEERING 294-5621
 CHESAPEAKE AND POTOMAC TELEPHONE COMPANY 393-3648.
 MISS UTILITY - 1 - 868-0100
- FOR ALL STANDARD DETAILS SEE STANDARDS BOUND IN SPECIFICATIONS.
- ALL HORIZONTAL AND VERTICAL CONTROLS ARE BASED ON MARYLAND STATE DATUM.
- CLEAR ALL UTILITIES BY A MINIMUM OF 6".
- BLOCK ALL FITTINGS WITH CONCRETE, SEE STANDARDS BOUND IN SPECIFICATIONS.
- ALL WATER MAINS SHALL HAVE A MINIMUM OF 3/4" COVER.
- ALL WATER MAINS SHALL BE C.I.P., D.I.P. OR A.C.P. UNLESS OTHERWISE NOTED.
- ALL VALVES SHALL BE STRAPPED TO TEES WHERE APPLICABLE IN ACCORDANCE WITH THE STANDARD DETAILS.
- ALL FIRE HYDRANTS SHALL BE STRAPPED AND BUTTRESSED IN ACCORDANCE WITH THE STANDARD DETAILS. SOIL AROUND THE HYDRANTS SHALL BE COMPACTED IN ACCORDANCE WITH SECTION 5-15 OF THE STANDARD SPECIFICATIONS.
- PAYMENT FOR STRAPPING FIRE HYDRANTS AND VALVES WILL BE INCLUDED IN UNIT PRICE BID FOR FURNISHING AND LAYING WATER MAINS.
- BURY LINE ELEVATIONS ON FIRE HYDRANTS SHALL BE SET TO THE ELEVATIONS SHOWN ON THE DRAWINGS.
- ALL W.H.C.'S SHALL BE 3/4" DIAMETER UNLESS OTHERWISE NOTED.
- WATER SERVICES SHALL BE FOR INSIDE METER SETTINGS.
- ALL SEWER MAINS SHALL BE C.S.P.X., V.C.P.X. OR A.C.P. CLASS 2400 UNLESS OTHERWISE NOTED.
- ALL MANHOLES SHALL BE 4'-0" INSIDE DIAMETER.
- THE CONTRACTOR SHALL PROVIDE A JOINT IN ALL SEWER MAINS WITHIN 2'-0" OF EXTERIOR MANHOLE WALLS.
- TREES ARE TO BE PROTECTED FROM DAMAGE TO MAXIMUM EXTENT. TREES LOCATED WITHIN THE CONSTRUCTION STRIP ARE NOT TO BE REMOVED OR DAMAGED BY THE CONTRACTOR.

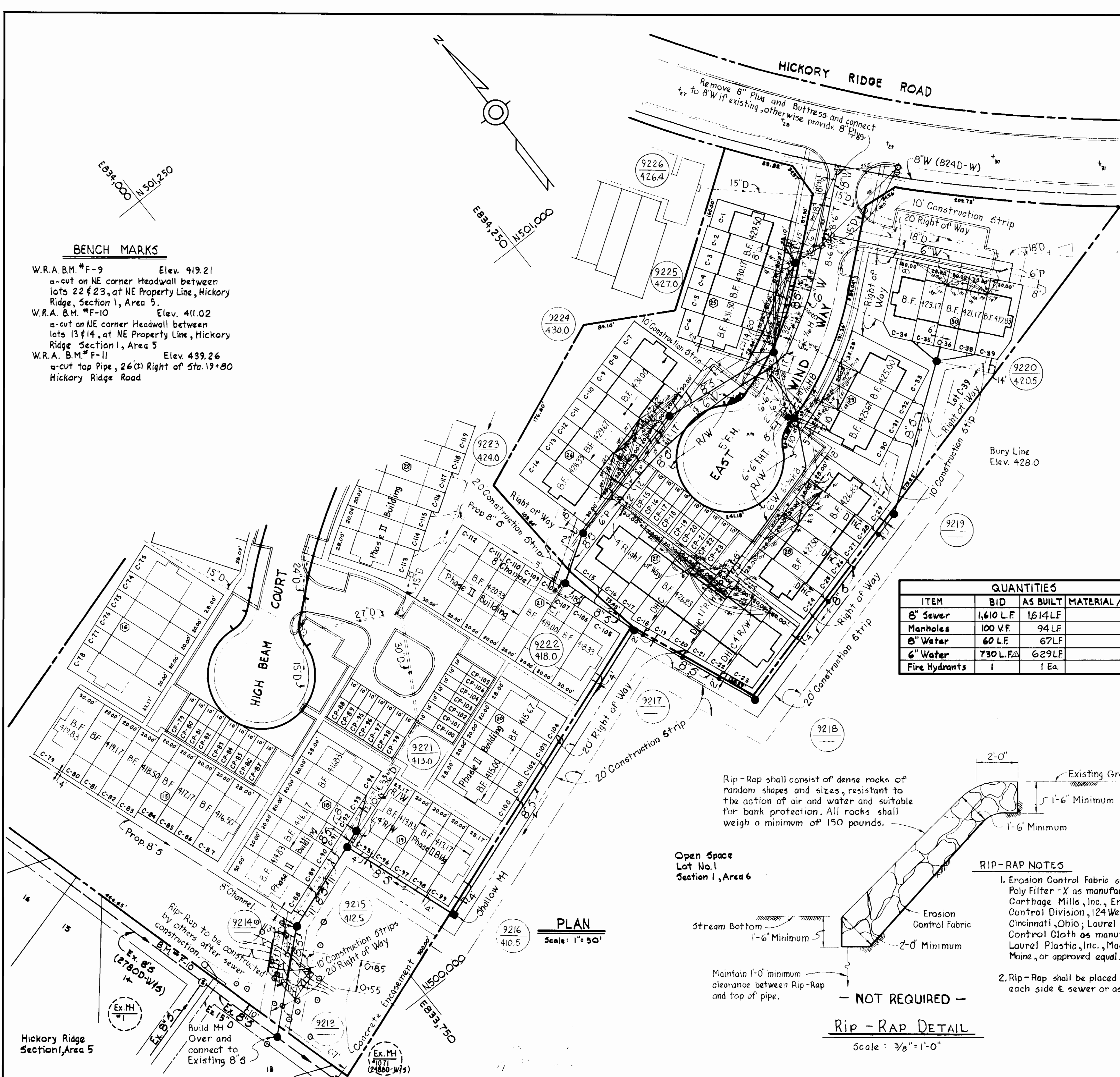
QUANTITIES			
ITEM	BID	AS BUILT	MATERIAL/SUPPLIER
8" Sewer	1,610 L.F.	1,614 L.F.	
Manholes	100 V.F.	94 L.F.	
6" Water	60 L.F.	67 L.F.	
6" Water	730 L.F.	629 L.F.	
Fire Hydrants	1	1 Ea.	

Rip-Rap shall consist of dense rocks of random shapes and sizes, resistant to the action of air and water and suitable for bank protection. All rocks shall weigh a minimum of 150 pounds.

Open Space Lot No. 1 Section 1, Area 6



RIP-RAP DETAIL
 Scale: 3/8" = 1'-0"



PLAN
 Scale: 1" = 50'

WHITMAN, REQUARDT & ASSOCIATES ENGINEERS
 1304 ST. PAUL ST. BALTIMORE, MARYLAND

DEPARTMENT OF PUBLIC WORKS
 HOWARD COUNTY, MARYLAND
 3-23-79
 DIRECTOR OF PUBLIC WORKS - DATE

CONTRACT NO. 2841D-W&S
 3-22-79
 CHIEF-BUREAU OF ENGINEERING - DATE

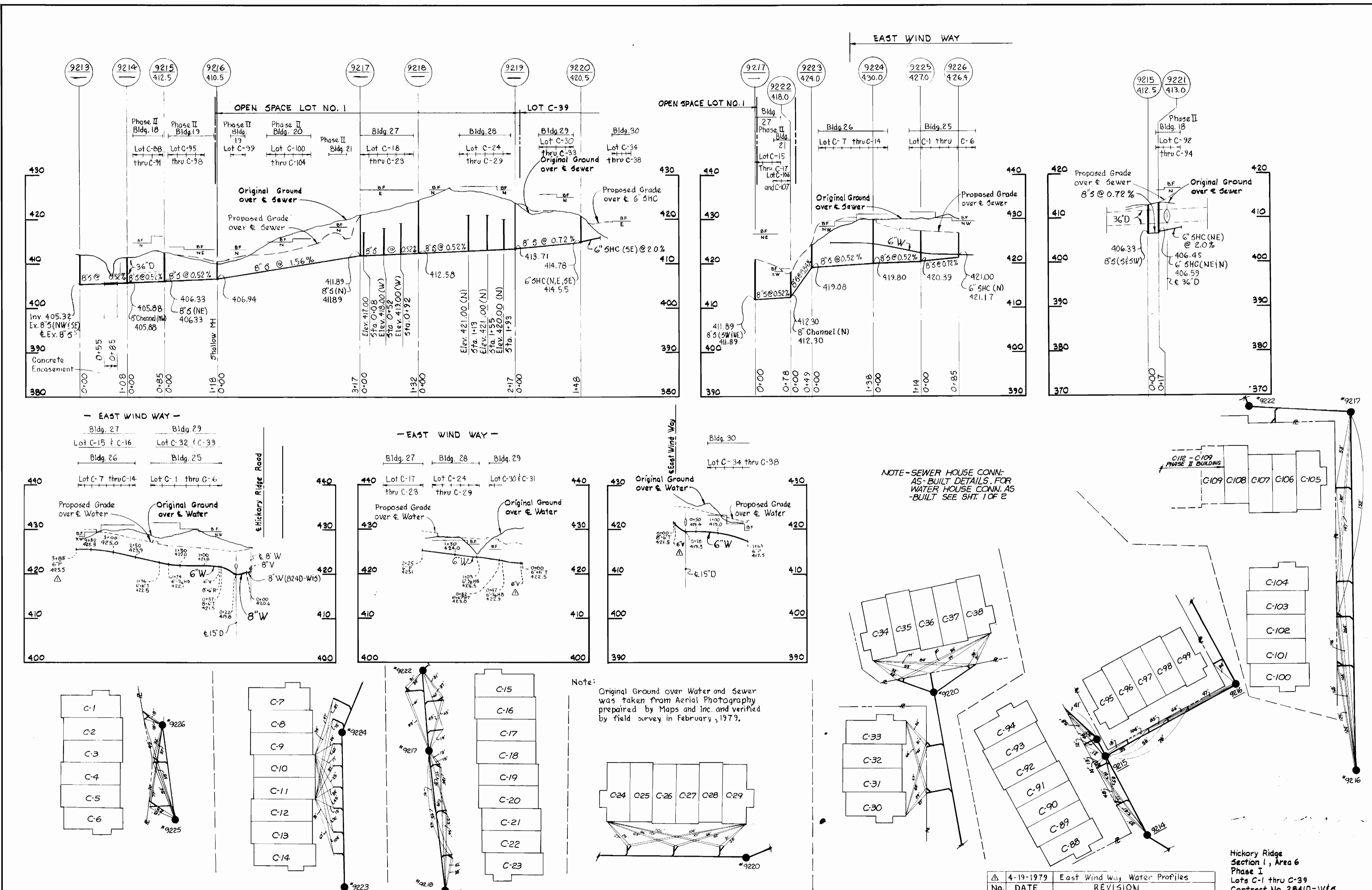
PLAN & DETAILS OF WATER & SEWER DRAINS

COLUMBIA VILLAGE OF HICKORY RIDGE ELECTION DISTRICT - CLARKSVILLE NO. 5

DRAWING NO. 1 OF 2 SCALE AS SHOWN

No.	DATE	REVISION
1	4-19-1979	Water Length changed

Hickory Ridge Section I, Area 6 Phase I Lots C-1 thru C-39 Contract No. 2841D-W&S



NOTE - SEWER HOUSE CONN. AS-BUILT DETAILS. FOR WATER HOUSE CONN. AS-BUILT SEE SH. 1 OF 2

Note: Original Ground over Water and Sewer was taken from Aerial Photography prepared by Maps and Inc. and verified by field survey in February, 1979.

No.	DATE	REVISION
Δ	4-19-1979	East Wind Way Water Profiles

Hickory Ridge Section 1, Area 6 Phase I Lots C-1 thru C-39 Contract No. 2841D-Wf5

WHITMAN, REQUARDT & ASSOCIATES ENGINEERS 1304 ST. PAUL ST. BALTIMORE, MARYLAND	DEPARTMENT OF PUBLIC WORKS HOWARD COUNTY, MARYLAND George F. Nunn, 3-21-79 DIRECTOR OF PUBLIC WORKS - DATE	CONTRACT NO. 2841D-Wf5	PROFILES OF WATER & SEWER MAINS	COLUMBIA VILLAGE OF HICKORY RIDGE ELECTION DISTRICT - CLARKSVILLE NO. 5	DRAWING NO. 2	SCALE H: 1" = 100'
					OF 2	V: 1" = 10'