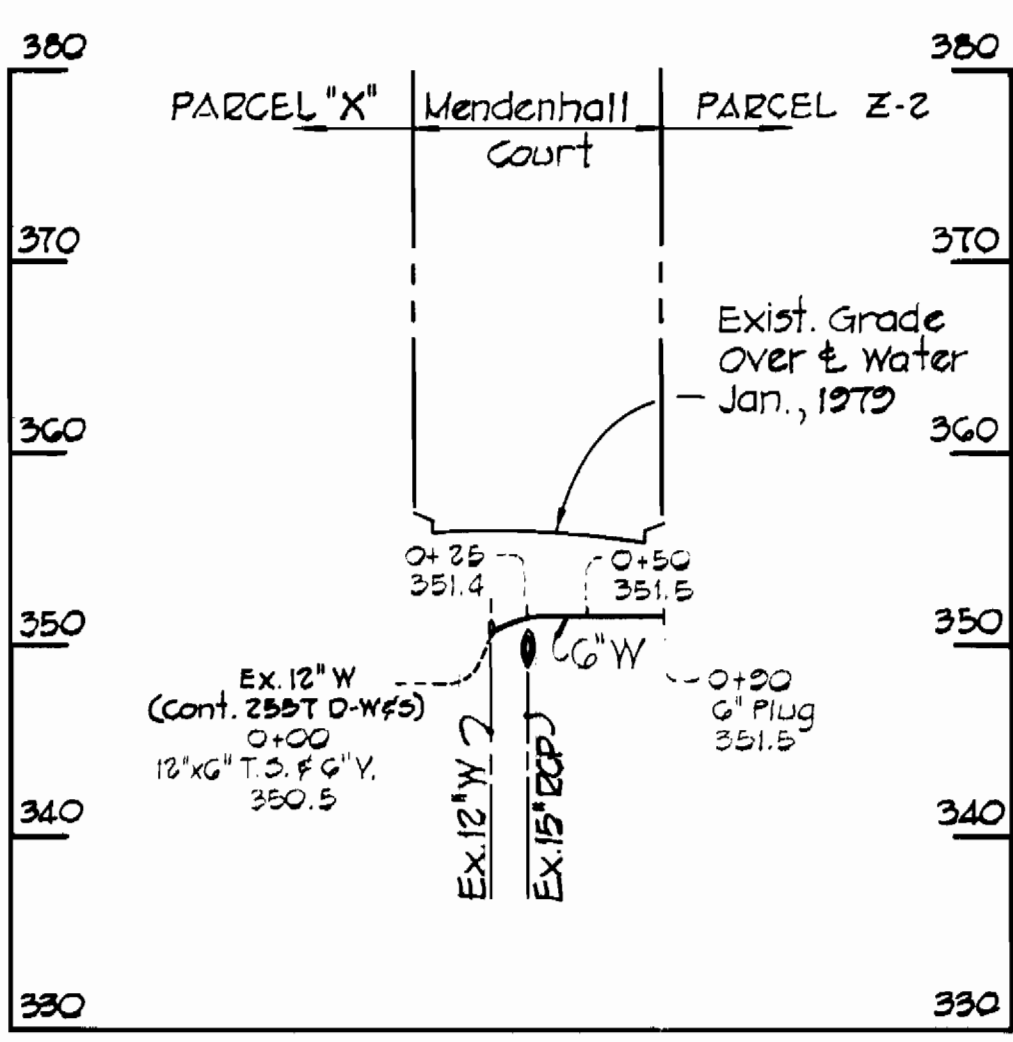
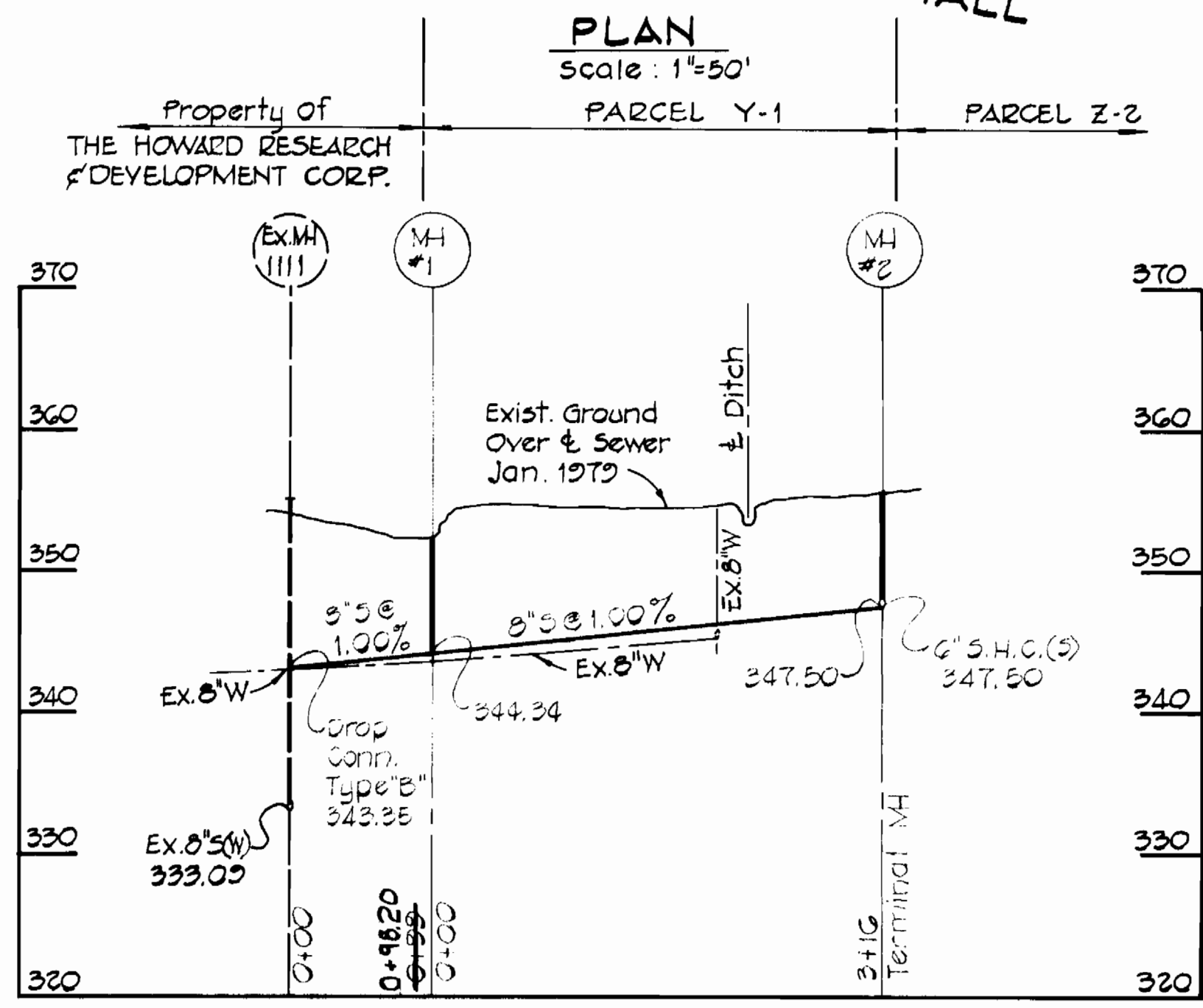


VICINITY MAP
SCALE: 1" = 600'

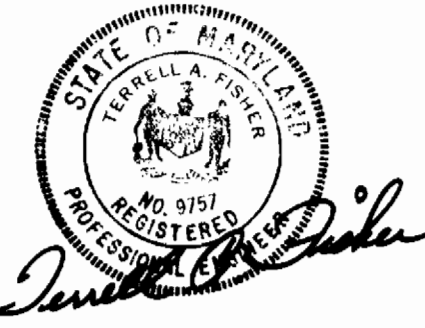
GENERAL NOTES

- APPROXIMATE LOCATIONS OF EXISTING UTILITIES ARE SHOWN. THE CONTRACTOR SHALL TAKE ALL NECESSARY PRECAUTIONS TO PROTECT EXISTING MAINS AND SERVICES AND MAINTAIN UNINTERRUPTED SUPPLY. ANY DAMAGE INCURRED SHALL BE REPAIRED IMMEDIATELY.
- ALL PIPE ELEVATIONS SHOWN ARE INVERT ELEVATIONS.
- THE CONTRACTOR SHALL LOCATE EXISTING UTILITIES A MINIMUM OF TWO WEEKS IN ADVANCE OF CONSTRUCTION OPERATIONS IN VICINITY OF UTILITIES.
- FOR ALL STANDARD DETAILS SEE STANDARDS BOUND IN SPECIFICATIONS.
- CLEAR ALL UTILITIES BY A MINIMUM OF 6". CLEAR ALL POLES BY 2'-0" MINIMUM OR TUNNEL, AS REQUIRED.
- THE CONTRACTOR SHALL PROVIDE A JOINT IN ALL SEWER MAINS WITHIN 2'-0" OF EXTERIOR MANHOLE WALL.
- ALL MANHOLES SHALL BE 4'-0" INSIDE DIAMETER.
- THE CONTRACTOR SHALL NOTIFY THE FOLLOWING UTILITIES OR AGENCIES AT LEAST FIVE (5) WORKING DAYS BEFORE STARTING WORK SHOWN ON THESE DRAWINGS.
BALTIMORE GAS AND ELECTRIC - UNDERGROUND ELECTRIC - (234-5691).
C & P TELEPHONE CO. - (725-9976).
BALTIMORE GAS AND ELECTRIC - UNDERGROUND GAS - (559-0100).
MISS UTILITY - (800-441-8355).
- ALL HORIZONTAL AND VERTICAL CONTROLS ARE BASED ON MARYLAND STATE DATUM.
- ALL SEWER MAINS SHALL BE C.S.P.X., V.C.P.X. OR A.C.P. CLASS 2400, UNLESS OTHERWISE NOTED.
- ALL WATER MAINS TO HAVE A MINIMUM OF 3'-6" COVER, UNLESS OTHERWISE NOTED.
- BLOCK ALL FITTINGS WITH CONCRETE, SEE STANDARDS BOUND IN SPECIFICATIONS.



PROFILES
Scale: Horiz. 1"=100'
Vert. 1"=10'

QUANTITIES			
ITEM	EST'D	AS-BUILT	SUPPLIER
8" SEWER	415 L.F.	414'	TRANSITE JMW
6" SEWER	12 L.F.	17'	TRANSITE JMW
MANHOLES	13 O.V.F.	142'	
6" WATER	20 L.F.	96'	D.I.P.



FISHER, COLLINS AND CARTER, INC.
CIVIL ENGINEERING CONSULTANTS
8388 COURT AVENUE
ELLCOTT CITY, MARYLAND 21043

DEPARTMENT OF PUBLIC WORKS
HOWARD COUNTY, MARYLAND
DIRECTOR OF PUBLIC WORKS DATE
CHIEF, BUREAU OF ENGINEERING DATE

CONTRACT NO. 2836-D-W&S

PLAN & PROFILE
WATER & SEWER MAIN

SIELING INDUSTRIAL PARK
SECTION-1 AREA-1
ELECTION DISTRICT GUILFORD NO.6

DRAWING NO. 1 OF 1
SCALE AS SHOWN
DESIGNED: R.D.B.
DRAFTED: D.B.S.
CHECKED: T.A.F.

CONTRACT NO. 2836-D-W&S
SIELING INDUSTRIAL PARK
SECTION-1 AREA-1
PARCEL Z-2
WATER & SEWER EXTENSION

AS BUILT JJT
8/19/79

MARCH 30, 1979