

VICINITY MAP
Scale: 1" = 600'

GENERAL NOTES

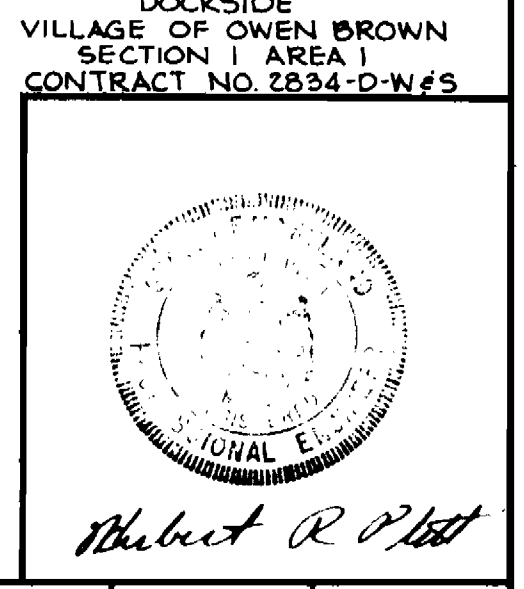
1. Approximate location of existing mains are shown. The contractor shall take all necessary precautions to protect existing mains and services and maintain uninterrupted supply. Any damage incurred shall be repaired immediately.
2. All horizontal controls are based on Maryland State Coordinates.
3. All vertical controls are based on U.S.G.S. Datum.
4. All pipe elevations shown are invert elevations.
5. Clear all utilities by a minimum of 6'. Clear all poles by 2'-0" minimum or tunnel as required.
6. For all standard details, see standards bound in specifications.
7. The Contractor shall locate existing utilities in advance of construction operations in vicinity of proposed utilities.
8. Trees are to be protected from damage to maximum extent. Trees located within the construction strip are not to be removed or damaged by the contractor.
9. The contractor shall remove trees, stumps and roots along line of excavation as directed by the Engineer. Payment for such removal shall be included in the unit price bid for excavation and backfill for water and sewer mains.
10. Place regulation "Men Working" and warning signs as required to comply with Maryland State Highway Administration Manual of Traffic Control For Highway Construction and Maintenance Operations.
11. All water mains shall be C.I.P., D.I.P. or A.C.P. unless otherwise noted.
12. Top of all water mains to have a minimum of 3 1/2' cover unless otherwise noted.
13. All valves shall be strapped to trees in accordance with standard details.
14. Block all fittings with concrete, see standards bound in specifications.
15. Bury line elevations on fire hydrants shall be set to the elevations shown on the drawings. All fire hydrants shall be strapped and buttressed with concrete in accordance with standard details. Soil around the fire hydrant to be compacted in accordance with section 5-15 of the Standard Specifications.
16. All water house connections shall be meter setting for inside.
17. All sewer mains shall be C.S.P.X., V.C.P.X. or A.C.P. Class 2400 unless otherwise noted.
18. The contractor shall provide a joint in all sewer mains within 2'-0" of exterior manhole walls.
19. All manholes shall be 4'-0" inside diameter, unless otherwise noted.
20. Where sewer service connections enter manholes inverts shall be channelized to accommodate flow.
21. Profile stations shall be adjusted as necessary to conform to plan dimensions.
22. Cost of strapping fire hydrants and valves to trees shall be included in the unit prices bid for furnishing and laying water mains.
23. The contractor shall notify the following utilities or agencies at least five days before starting work shown on the plans.
 State Highway Administration: 531-5533
 Baltimore Gas and Electric Company: 234-5631
 Underground Electric Distribution Engr.-Damage Control: 559-0100
 Underground Gas Distribution Engineering: 725-9976
 Chesapeake and Potomac Telephone Company: 301-993-3553
 American Telephone and Telegraph-Cable Location Division: 781-4641
 Colonial Pipeline Company: 781-4641

VILLAGE OF OWEN BROWN
SECTION 1, AREA 1
LOT 280
PLAT 28, FOLIO 110

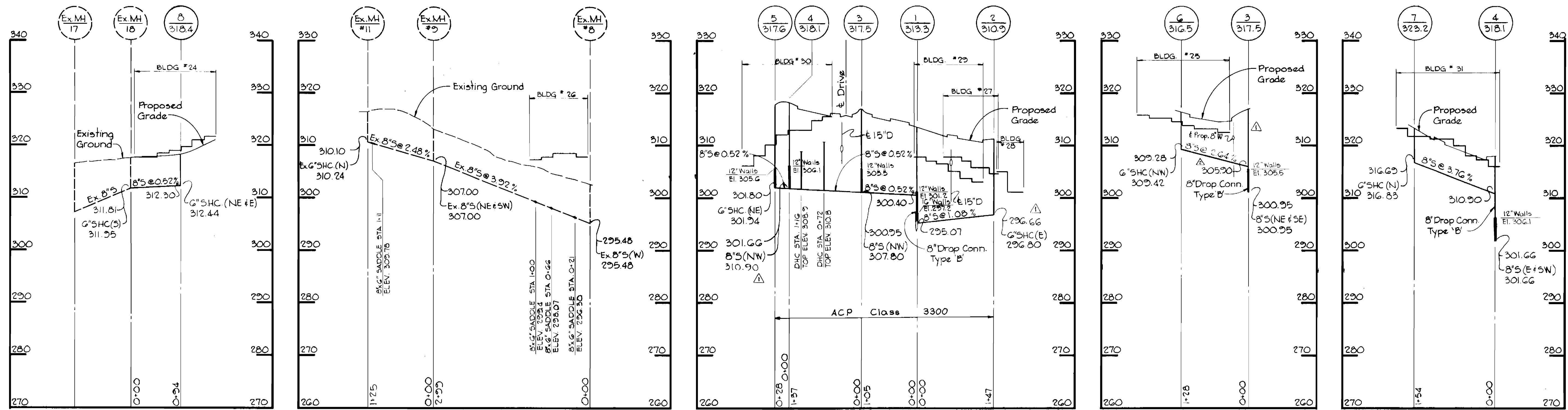
PLAN
Scale: 1" = 50'

BENCH MARKS
 T.B.M. #1 Elev. 302.00
 - Cut and Painted on Flange Bolt Sta. -0+51.5
 offset 15' RT. Broken Staff
 T.B.M. #2 Elev. 303.84
 - Cut in Concrete Bench Support at Dam

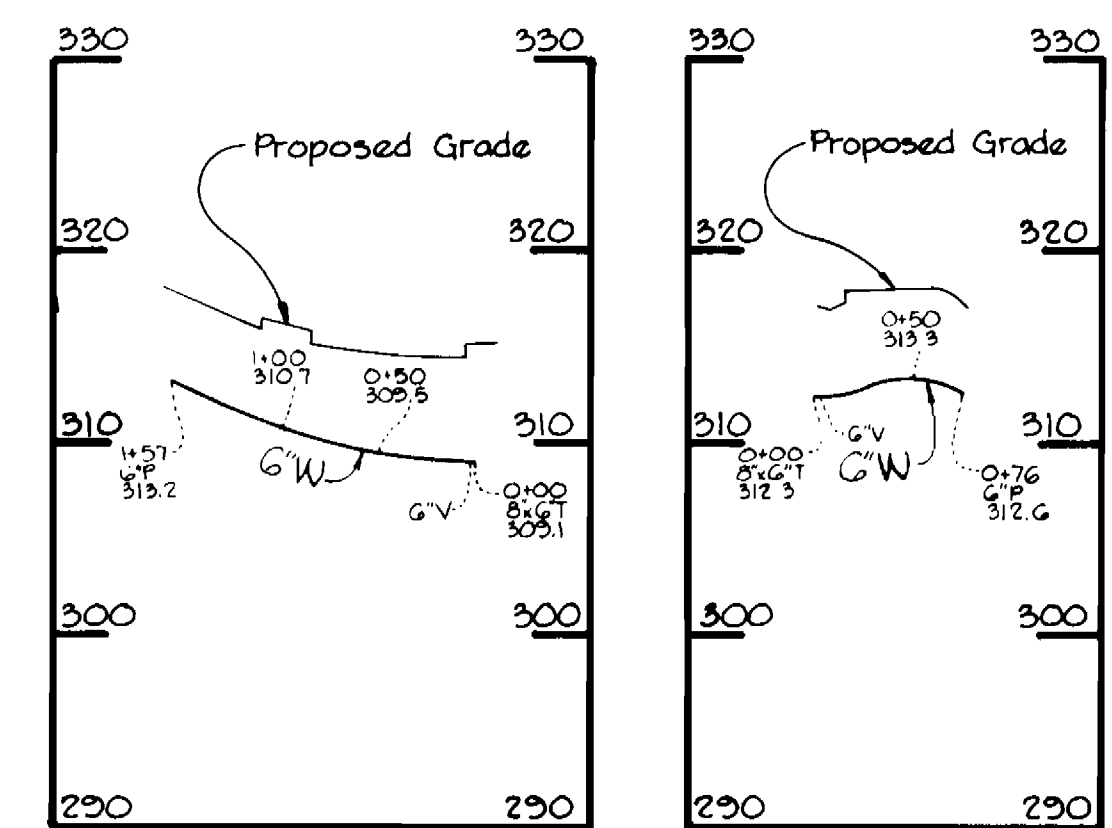
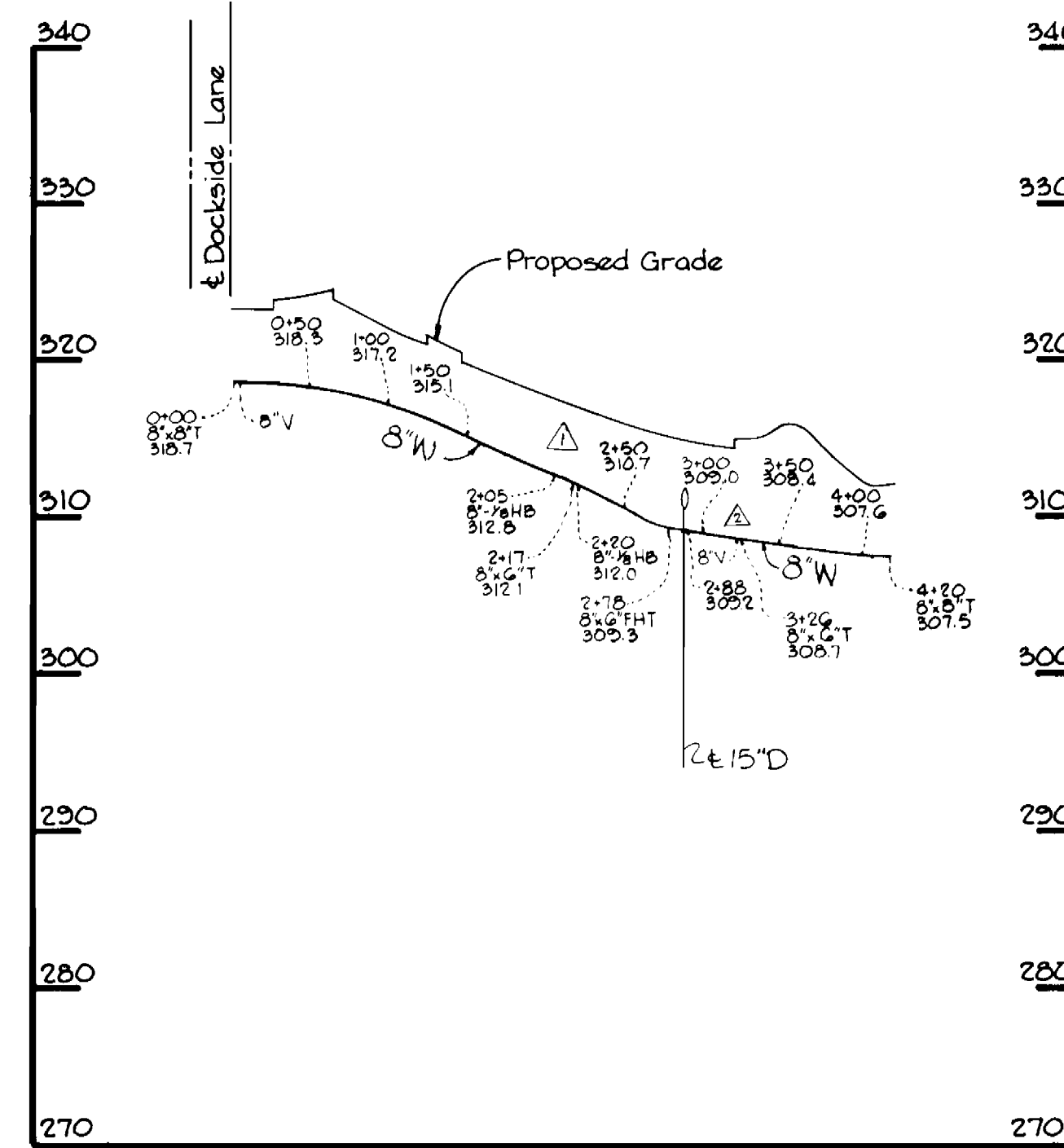
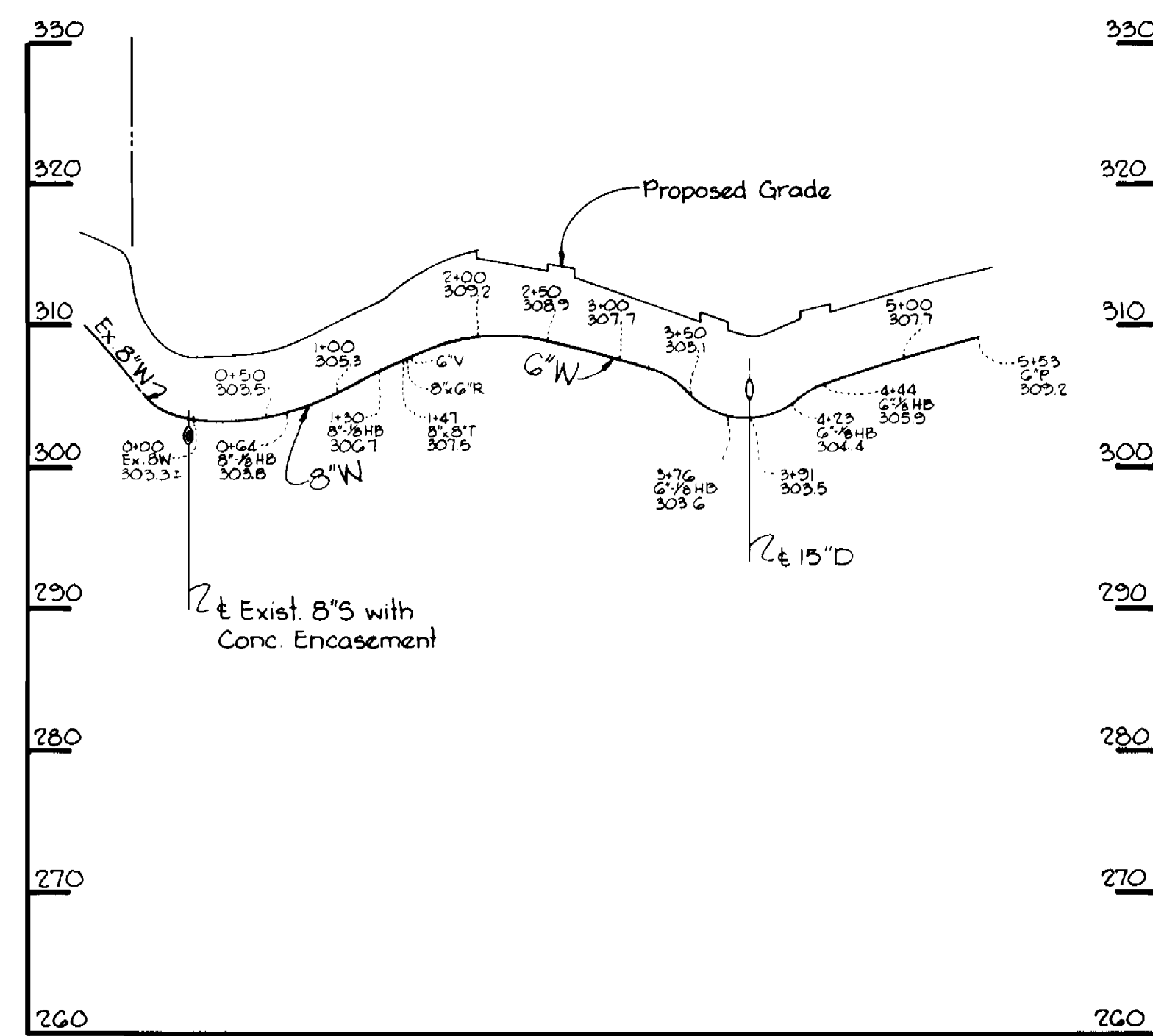
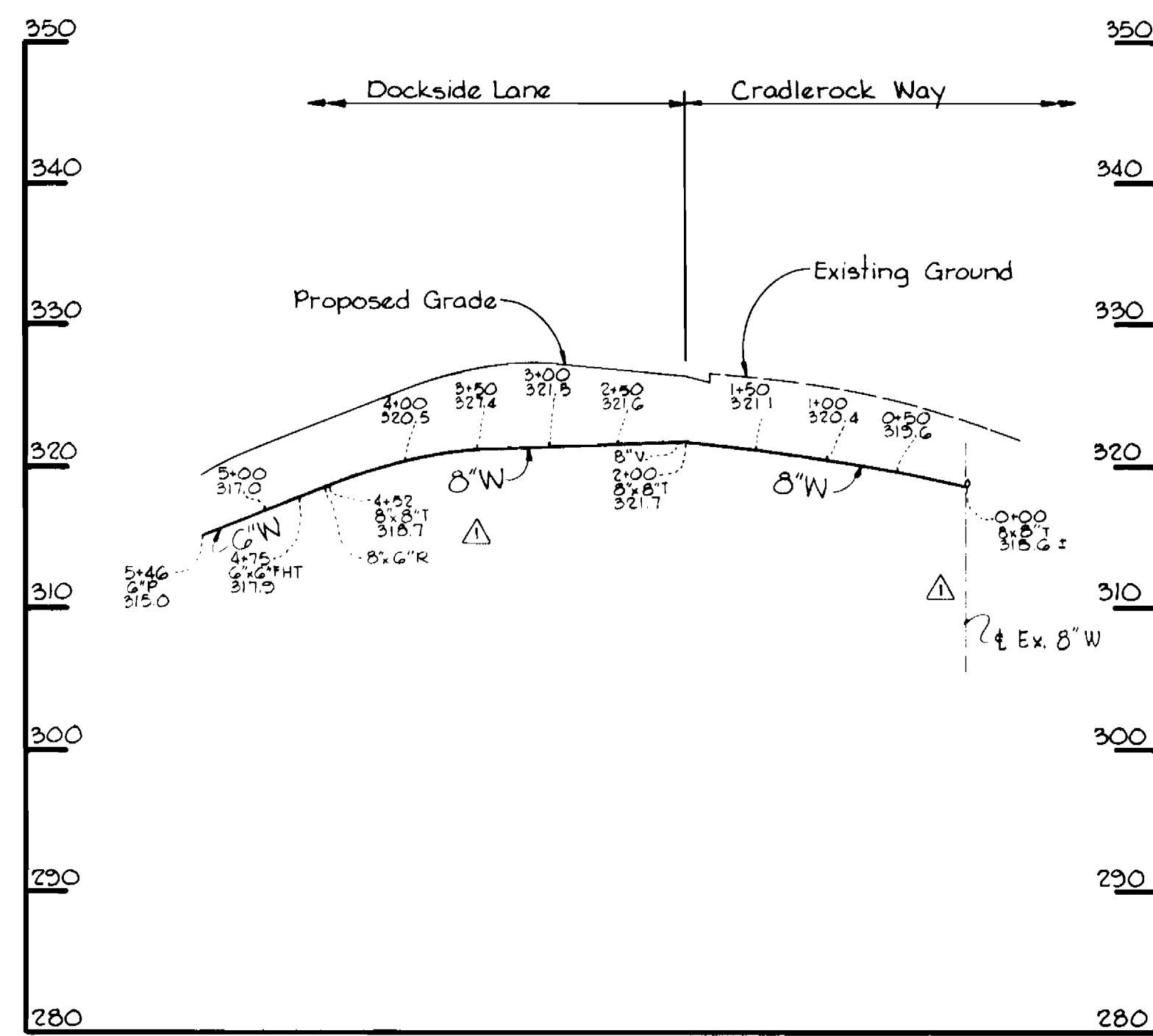
ITEM	QUANTITIES		SUPPLIER
	BID	AS BUILT	
8" Sewer	795 L.F.	770 L.F.	Transite cl 2400 # 3300
8" Water	1,020 L.F.	1047 L.F.	D.I.P.
6" Water	750 L.F.	746 L.F.	D.I.P.
Fire Hydrants	2	2	M & H



CENTURY ENGINEERING, INC. CONSULTING ENGINEERS-PLANNERS TOWSON, MARYLAND 21204	DEPARTMENT OF PUBLIC WORKS HOWARD COUNTY, MARYLAND J. F. Nunnery 3-7-79 DIRECTOR OF PUBLIC WORKS DATE	CONTRACT NO. 2834-D-W&S W. O. Lohr 3-7-79 CHIEF-BUREAU OF ENGINEERING DATE	PLAN OF WATER AND SEWER MAINS	COLUMBIA VILLAGE OF OWEN BROWN ELECTION DISTRICT GUILFORD NO. 6	DRAWING NO. 1 OF 2	SCALE AS SHOWN
---	---	---	--	--	-----------------------------------	-------------------------------



As-Built Note: All work set to design elev. as shown.



NR	DATE	REVISION
1	3/30/79	Rev. Elev.
2	4/4/79	Revised Sewer Profile
3	4/4/79	Added 8\"/>



Dockside Village of Owen Brown Section 1, Area 1 Contract No. 2834-D-W&S

Robert R. Plust

CENTURY ENGINEERING, INC.
CONSULTING ENGINEERS - PLANNERS
TOWSON, MARYLAND 21204

DEPARTMENT OF PUBLIC WORKS
HOWARD COUNTY, MARYLAND
3-7-79

CONTRACT NO. 2834-D-W&S

PROFILES OF
WATER AND SEWER MAINS

COLUMBIA
VILLAGE OF OWEN BROWN
ELECTION DISTRICT GUILFORD NO. 6

DRAWING
NO. 2
OF 2
SCALE
H:1"=100'
V:1"=10'