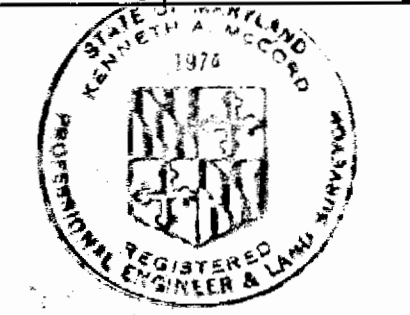


WATER & SEWER CODE  
 County Usa  
 Water No. E15  
 Sewer No. 510000

**CONTRACT NO. 2826D-W&S**  
**VILLAGE OF KINGS CONTRIVANCE**  
**HOWARD COUNTY, MARYLAND**  
**DEPARTMENT OF PUBLIC WORKS**

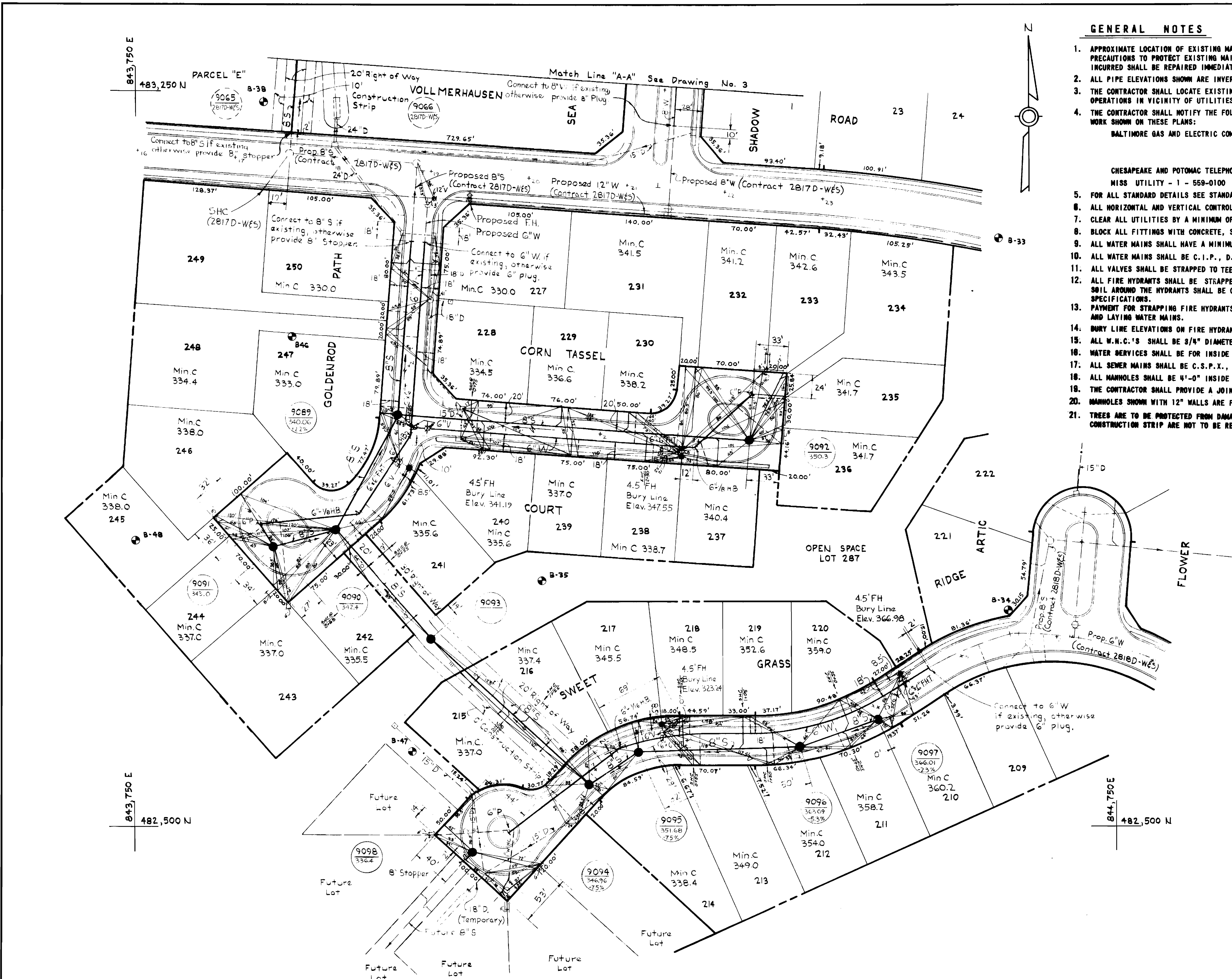
QUANTITIES			
ITEM	BID	AS-BUILT	MATERIAL/SUPPLIER
10" Sewer	1760 L.F.	1755 L.F.	J.M. class 2400 type II
8" Sewer	6,880 L.F.	6930 L.F.	" " " " " "
Manholes	370 V.P.	331.6 V.P.	Concrete Products
8" Water	1400 L.F.	1505 L.F.	Griffin D.I.P. class 53
6" Water	1,700 L.F.	2558 L.F.	" " " " class 52
Fire Hydrants	10	10	American Darling



*Harold M. ...*

Village of Kings Contrivance  
 Section 3, Area 1, Phase III  
 Contract No. 2826 D-W&S

WHITMAN, REQUARDT & ASSOCIATES ENGINEERS 1304 ST. PAUL ST. BALTIMORE, MARYLAND	DEPARTMENT OF PUBLIC WORKS HOWARD COUNTY, MARYLAND Richard E. Brubaker 12/8/78 DIRECTOR OF PUBLIC WORKS / DATE	CONTRACT NO. 2826D-W&S 200 P. 12-7-78 CHIEF-BUREAU OF ENGINEERING - DATE	LOCATION MAP OF WATER & SEWER MAINS	COLUMBIA VILLAGE OF KINGS CONTRIVANCE ELECTION DISTRICT GUILFORD NO.6	DRAWING NO. 1 OF 7	SCALE 1" = 600'
---	---	--	--	---	--------------------------	--------------------

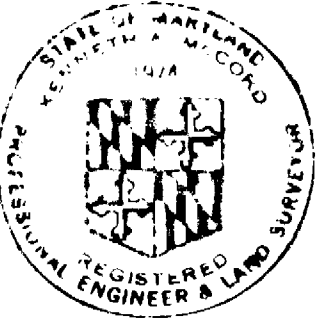


**GENERAL NOTES**

1. APPROXIMATE LOCATION OF EXISTING MAINS ARE SHOWN. THE CONTRACTOR SHALL TAKE ALL NECESSARY PRECAUTIONS TO PROTECT EXISTING MAINS AND SERVICES AND MAINTAIN UNINTERRUPTED SUPPLY. ANY DAMAGE INCURRED SHALL BE REPAIRED IMMEDIATELY.
2. ALL PIPE ELEVATIONS SHOWN ARE INVERT ELEVATIONS.
3. THE CONTRACTOR SHALL LOCATE EXISTING UTILITIES A MINIMUM OF TWO WEEKS IN ADVANCE OF CONSTRUCTION OPERATIONS IN VICINITY OF UTILITIES.
4. THE CONTRACTOR SHALL NOTIFY THE FOLLOWING UTILITIES OR AGENCIES AT LEAST FIVE DAYS BEFORE STARTING WORK SHOWN ON THESE PLANS:  
BALTIMORE GAS AND ELECTRIC COMPANY - UNDERGROUND ELECTRIC DISTRIBUTION ENGINEERING DAMAGE CONTROL 234-5691  
UNDERGROUND GAS DISTRIBUTION ENGINEERING 234-5621  
CHESAPEAKE AND POTOMAC TELEPHONE COMPANY 393-3648.  
MISS UTILITY - 1 - 559-0100
5. FOR ALL STANDARD DETAILS SEE STANDARDS BOUND IN SPECIFICATIONS.
6. ALL HORIZONTAL AND VERTICAL CONTROLS ARE BASED ON MARYLAND STATE DATUM.
7. CLEAR ALL UTILITIES BY A MINIMUM OF 6".
8. BLOCK ALL FITTINGS WITH CONCRETE, SEE STANDARDS BOUND IN SPECIFICATIONS.
9. ALL WATER MAINS SHALL HAVE A MINIMUM OF 3 1/2' COVER.
10. ALL WATER MAINS SHALL BE C.I.P., D.I.P. OR A.C.P. UNLESS OTHERWISE NOTED.
11. ALL VALVES SHALL BE STRAPPED TO TEES WHERE APPLICABLE IN ACCORDANCE WITH THE STANDARD DETAILS.
12. ALL FIRE HYDRANTS SHALL BE STRAPPED AND BUTTRESSED IN ACCORDANCE WITH THE STANDARD DETAILS. SOIL AROUND THE HYDRANTS SHALL BE COMPACTED IN ACCORDANCE WITH SECTION 5-15 OF THE STANDARD SPECIFICATIONS.
13. PAYMENT FOR STRAPPING FIRE HYDRANTS AND VALVES WILL BE INCLUDED IN UNIT PRICE BID FOR FURNISHING AND LAYING WATER MAINS.
14. BURY LINE ELEVATIONS ON FIRE HYDRANTS SHALL BE SET TO THE ELEVATION SHOWN ON THE DRAWINGS.
15. ALL W.N.C.'S SHALL BE 3/4" DIAMETER UNLESS OTHERWISE NOTED.
16. WATER SERVICES SHALL BE FOR INSIDE METER SETTINGS.
17. ALL SEWER MAINS SHALL BE C.S.P.X., V.C.P.X. OR A.C.P. CLASS 2400 UNLESS OTHERWISE NOTED.
18. ALL MANHOLES SHALL BE 4'-0" INSIDE DIAMETER.
19. THE CONTRACTOR SHALL PROVIDE A JOINT IN ALL SEWER MAINS WITHIN 2'-0" OF EXTERIOR MANHOLE WALLS.
20. MANHOLES SHOWN WITH 12" WALLS ARE FOR BRICK MANHOLES ONLY.
21. TREES ARE TO BE PROTECTED FROM DAMAGE TO MAXIMUM EXTENT. TREES LOCATED WITHIN THE CONSTRUCTION STRIP ARE NOT TO BE REMOVED OR DAMAGED BY THE CONTRACTOR.

**BENCH MARKS**

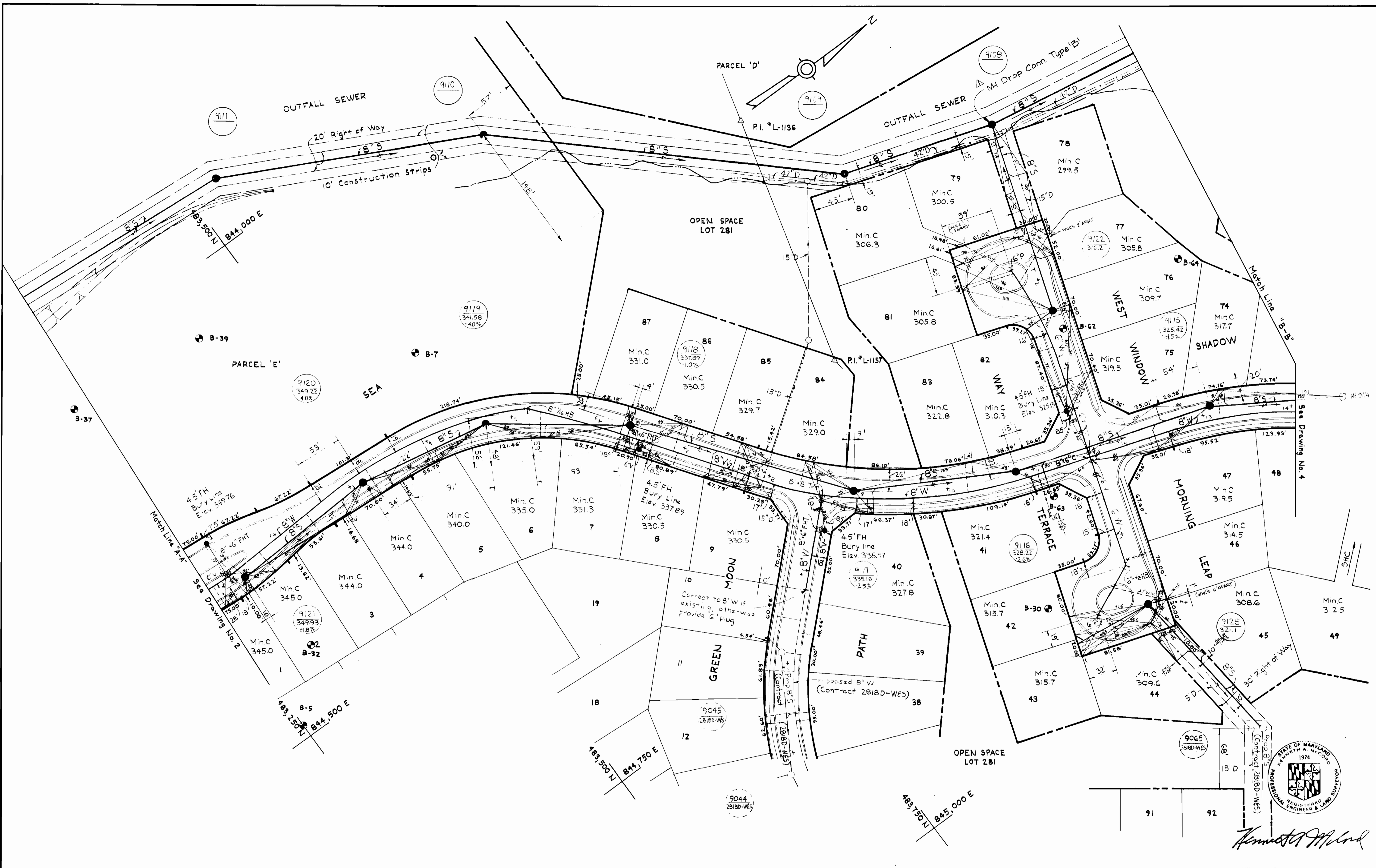
- W.R.&A. B.M.#2 Elev. 334.54  
R.R. Spike at side 18" Twin Poplar, 40' ± right at Vollmerhausen Rd. Sta. 15+35
- W.R.&A. B.M.#3 Elev. 354.18  
R.R. Spike at side 16" Poplar, 50' ± Left at Vollmerhausen Rd. Sta. 25+00



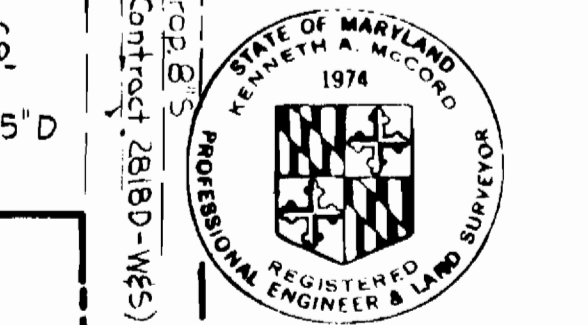
*Kenneth J. M. Lind*

Village of Kings Contrivance  
Section 3, Area 1, Phase III  
Contract No. 2826D-W#5

<b>WHITMAN, REQUARDT &amp; ASSOCIATES</b> ENGINEERS 1304 ST. PAUL ST. BALTIMORE, MARYLAND	<b>DEPARTMENT OF PUBLIC WORKS</b> HOWARD COUNTY, MARYLAND <i>Richard J. Trudenberg</i> 12/10/78 DIRECTOR OF PUBLIC WORKS DATE	<i>W. O. Sibert</i> 12-7-78 CHIEF-BUREAU OF ENGINEERING - DATE	<b>CONTRACT NO. 2826D-W#5</b>	<b>PLAN OF WATER &amp; SEWER MAINS</b>	<b>COLUMBIA VILLAGE OF KINGS CONTRIVANCE ELECTION DISTRICT GUILFORD NO.6</b>	<b>DRAWING NO. 2 OF 7</b>	<b>SCALE 1" = 50'</b>
--	--	---	-------------------------------	--	--	---------------------------	-----------------------



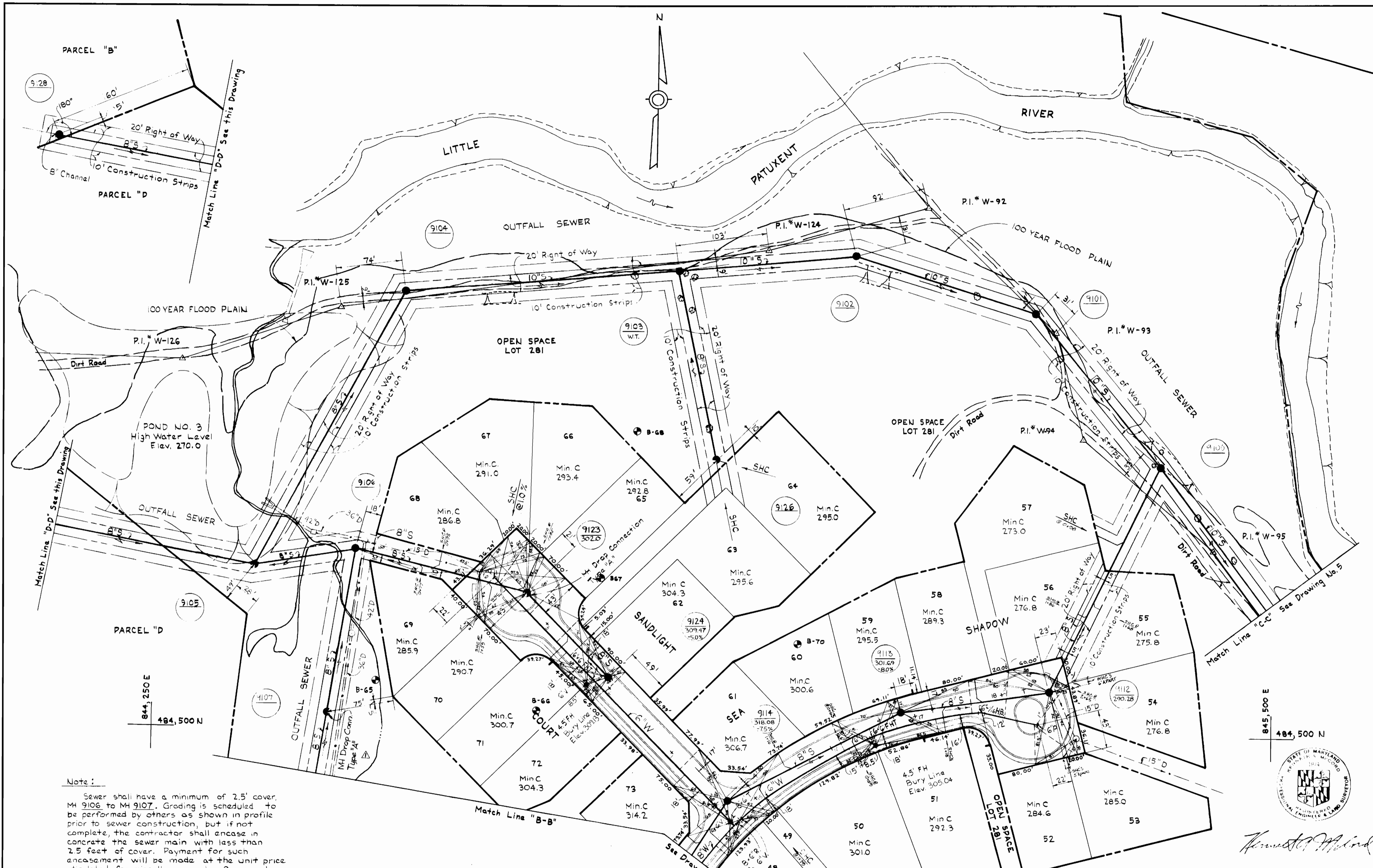
Rev. No.	Description	Date
1	Corrections-Drop Conn.	1/17/79



*Kenneth A. McCord*

Village of Kings Contrivance  
Section 3, Area 1, Phase III  
Contract No. 2826D-W65

<p><b>WHITMAN, REQUARDT &amp; ASSOCIATES</b> ENGINEERS 1304 ST. PAUL ST. BALTIMORE, MARYLAND</p>	<p><b>DEPARTMENT OF PUBLIC WORKS</b> HOWARD COUNTY, MARYLAND <i>Rubert J. Freudenberg</i> 12/17/78 DIRECTOR OF PUBLIC WORKS - DATE</p>	<p><b>CONTRACT NO. 2826D-W65</b></p>	<p><b>PLAN OF</b> <b>WATER &amp; SEWER MAINS</b></p>	<p><b>COLUMBIA</b> <b>VILLAGE OF KINGS CONTRIVANCE</b> <b>ELECTION DISTRICT GUILFORD NO. 6</b></p>	<p><b>DRAWING</b> <b>NO. 3</b> <b>OF 7</b></p>	<p><b>SCALE</b> <b>1" = 50'</b></p>
--	--	--------------------------------------	--	--	--	---



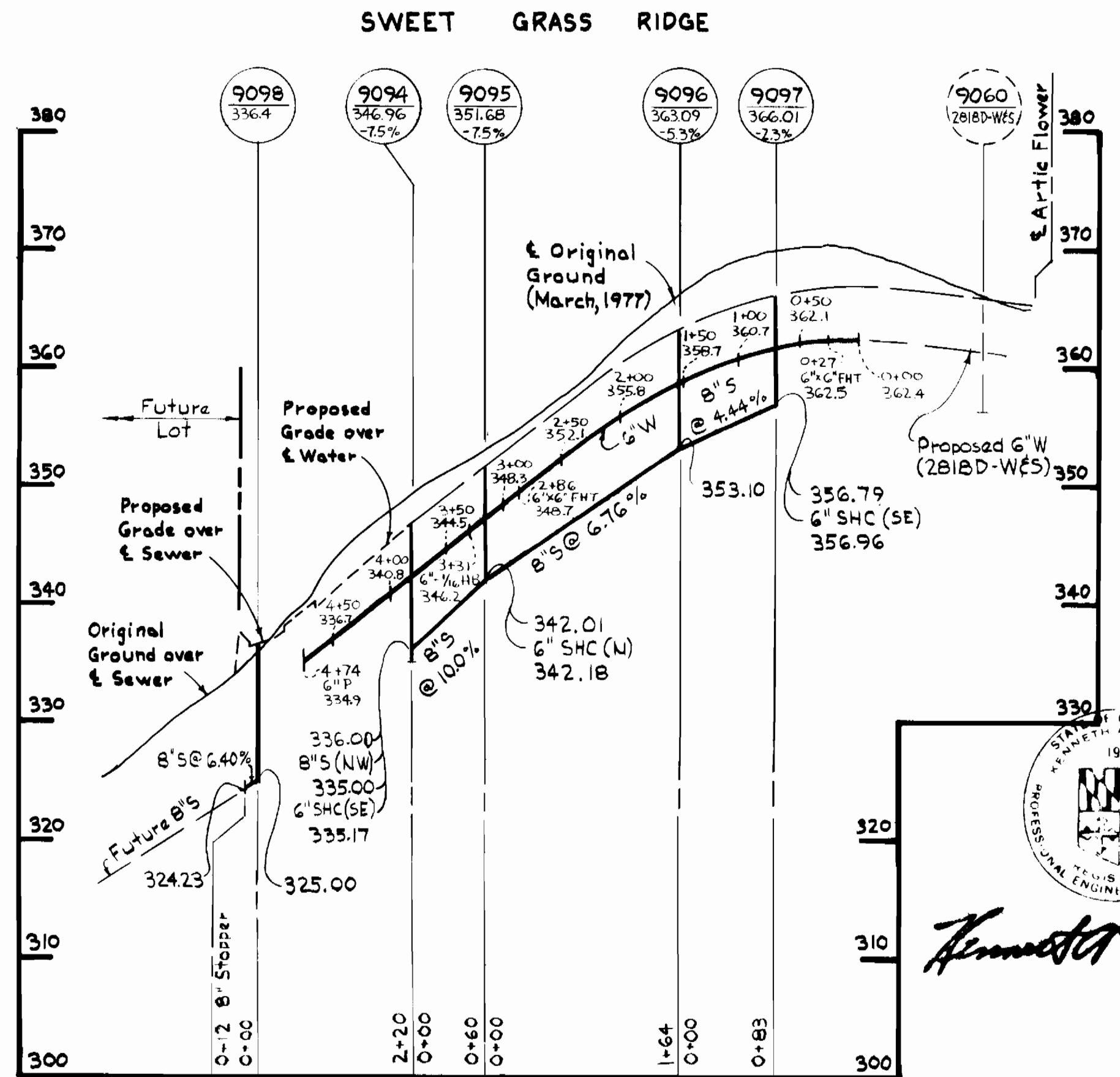
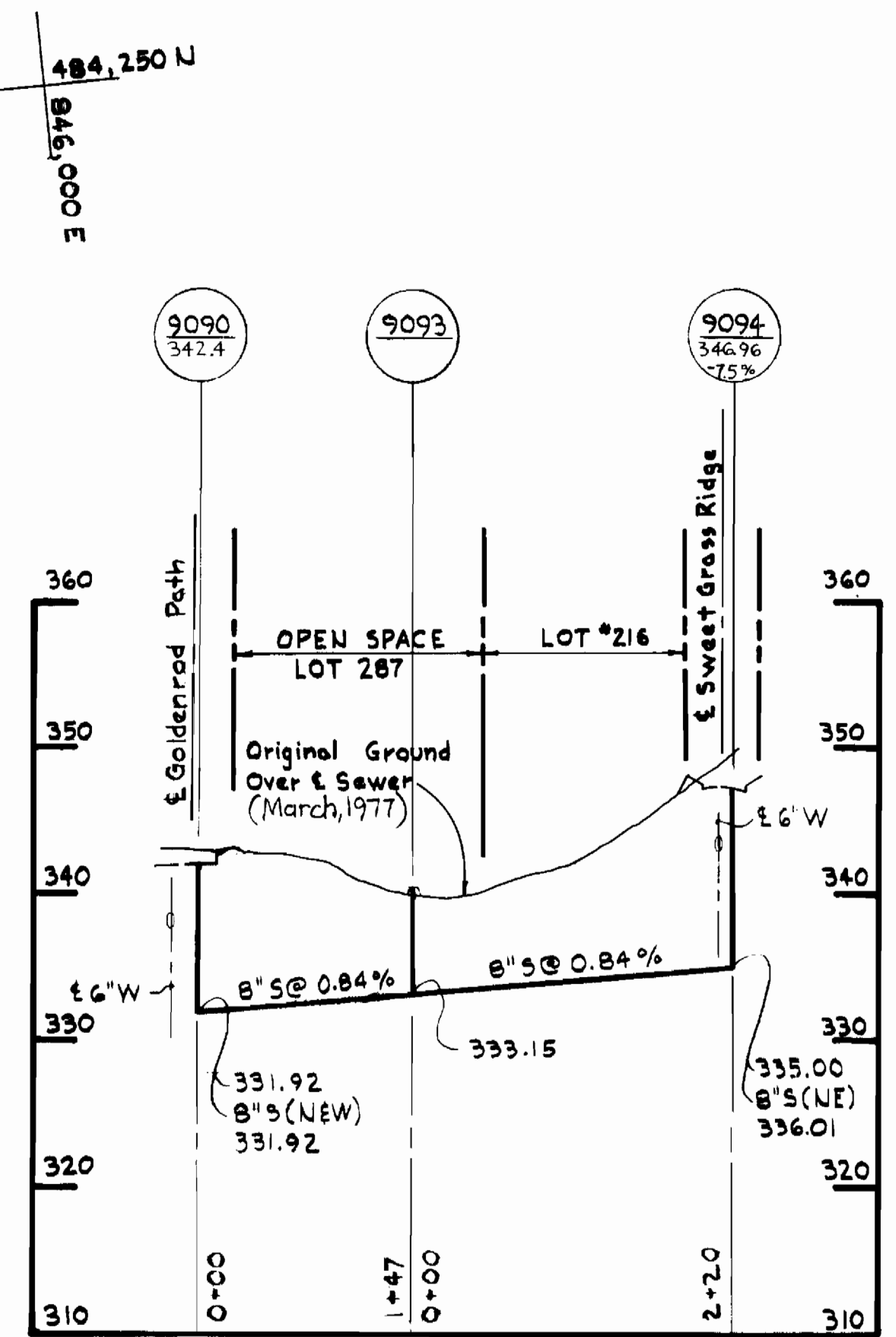
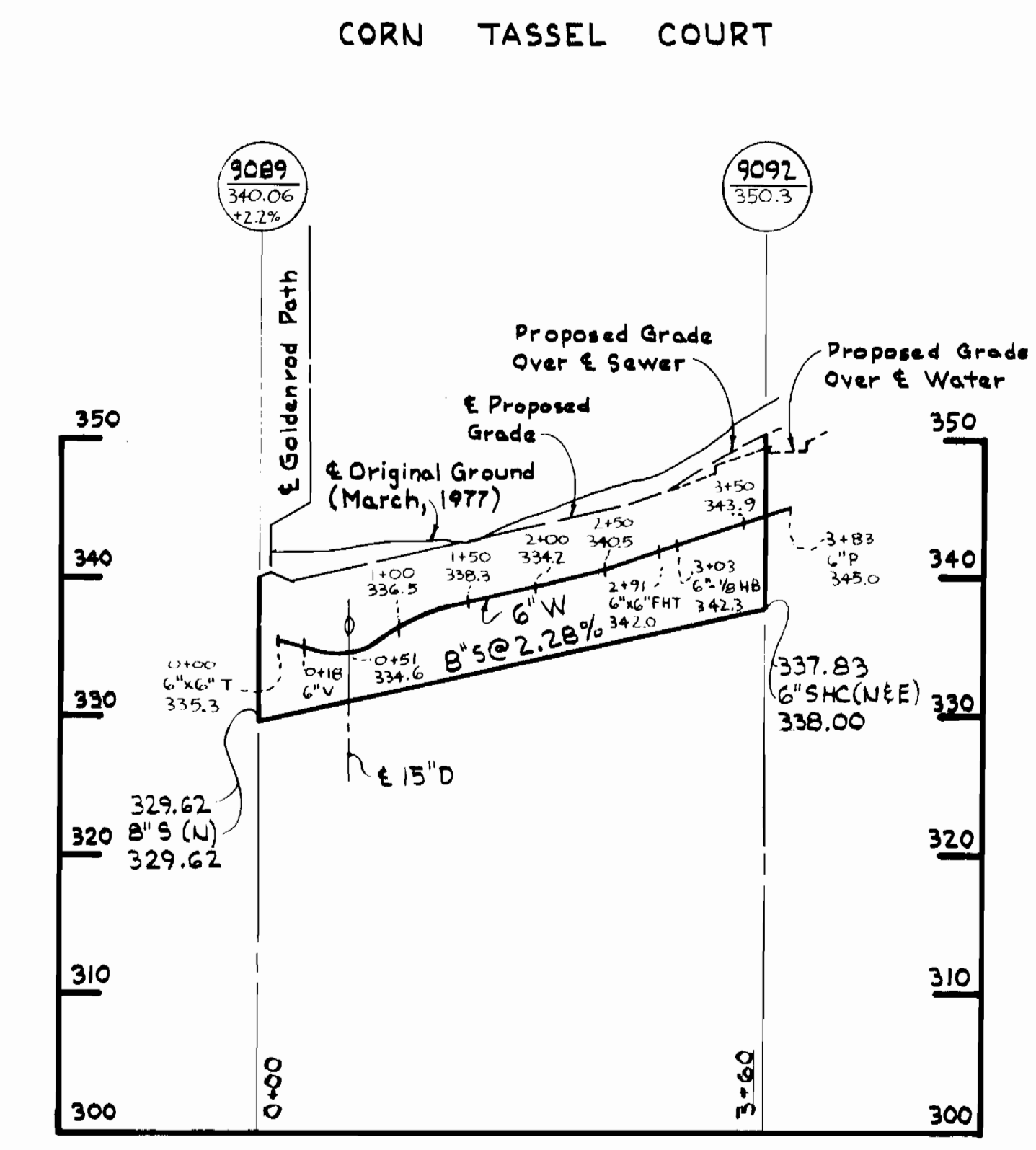
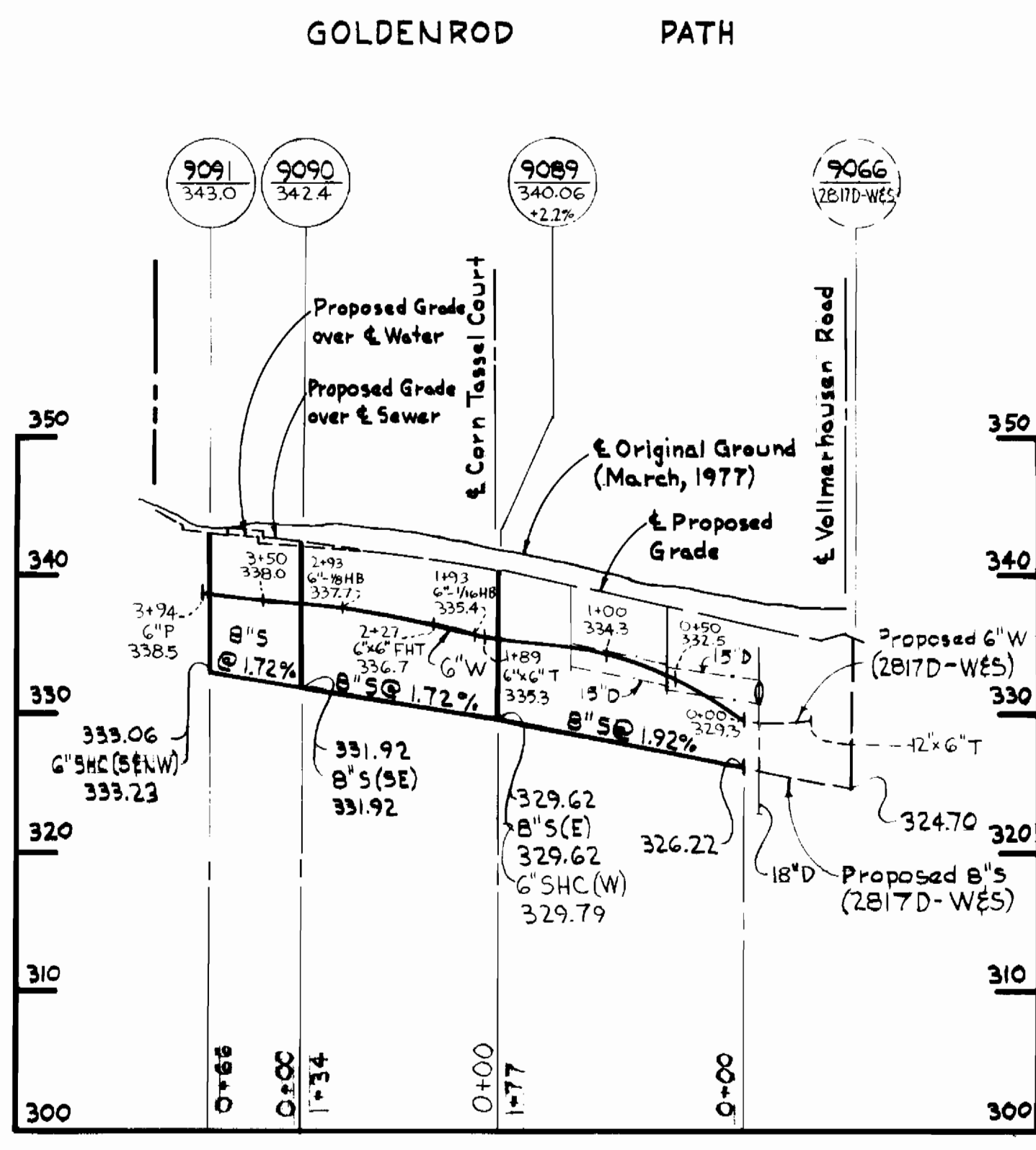
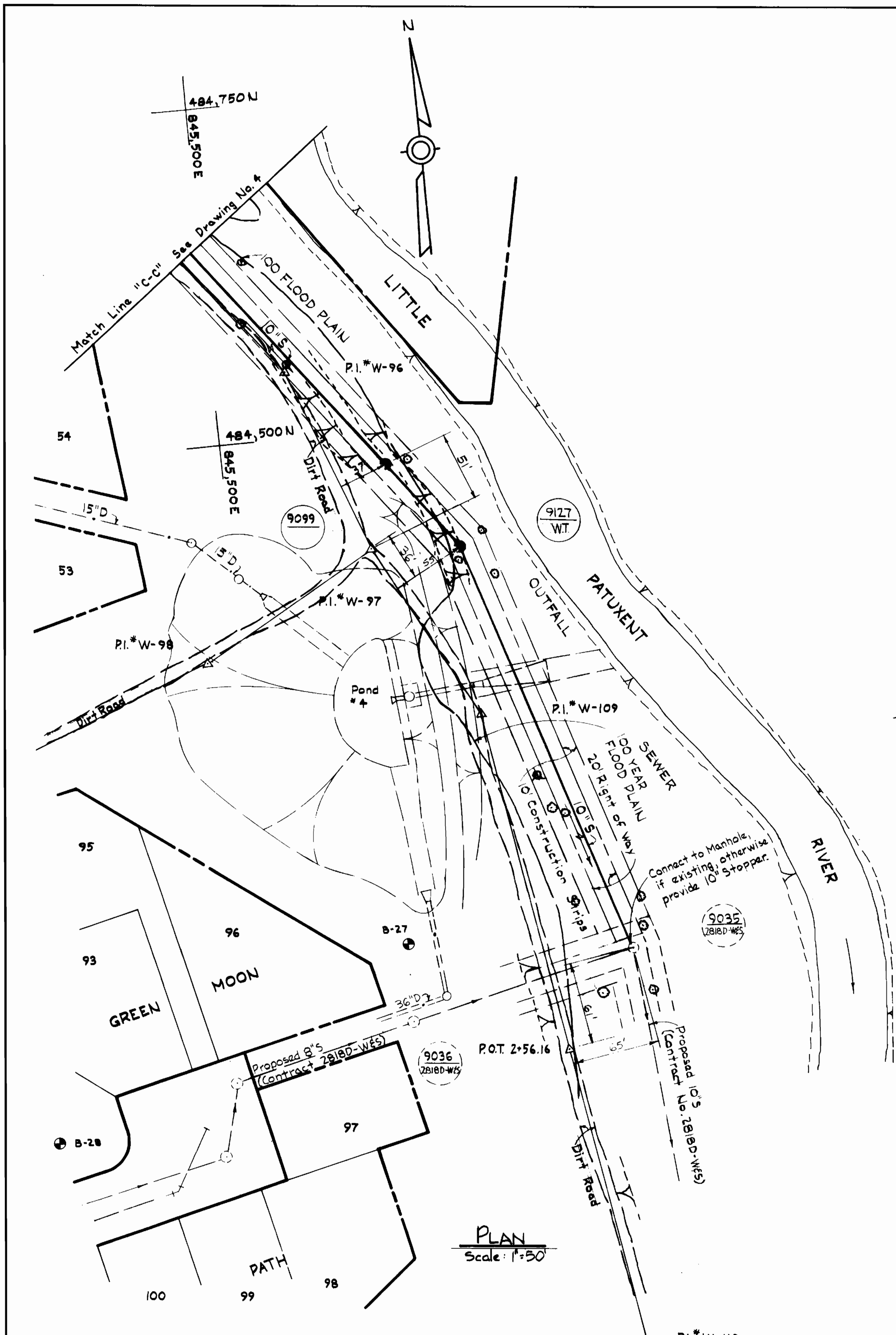
Note:  
 Sewer shall have a minimum of 2.5' cover, M.H. 9106 to M.H. 9107. Grading is scheduled to be performed by others as shown in profile prior to sewer construction, but if not complete, the contractor shall encase in concrete the sewer main with less than 2.5 feet of cover. Payment for such encasement will be made at the unit price stipulated for miscellaneous class C concrete.

Rev. No.	Description	Date
1	Corrections - Drop Conn.	1/17/79

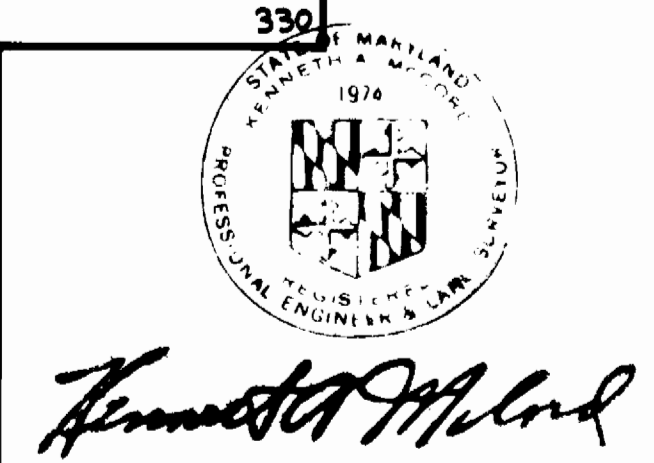


Village of Kings Contrivance  
 Section 3, Area 1, Phase III  
 Contract No. 2826D-W#5

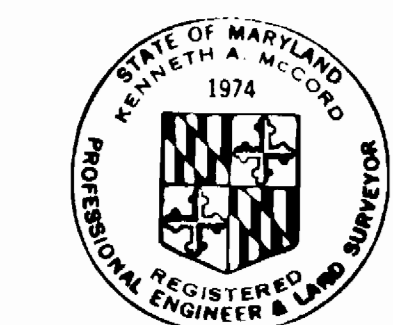
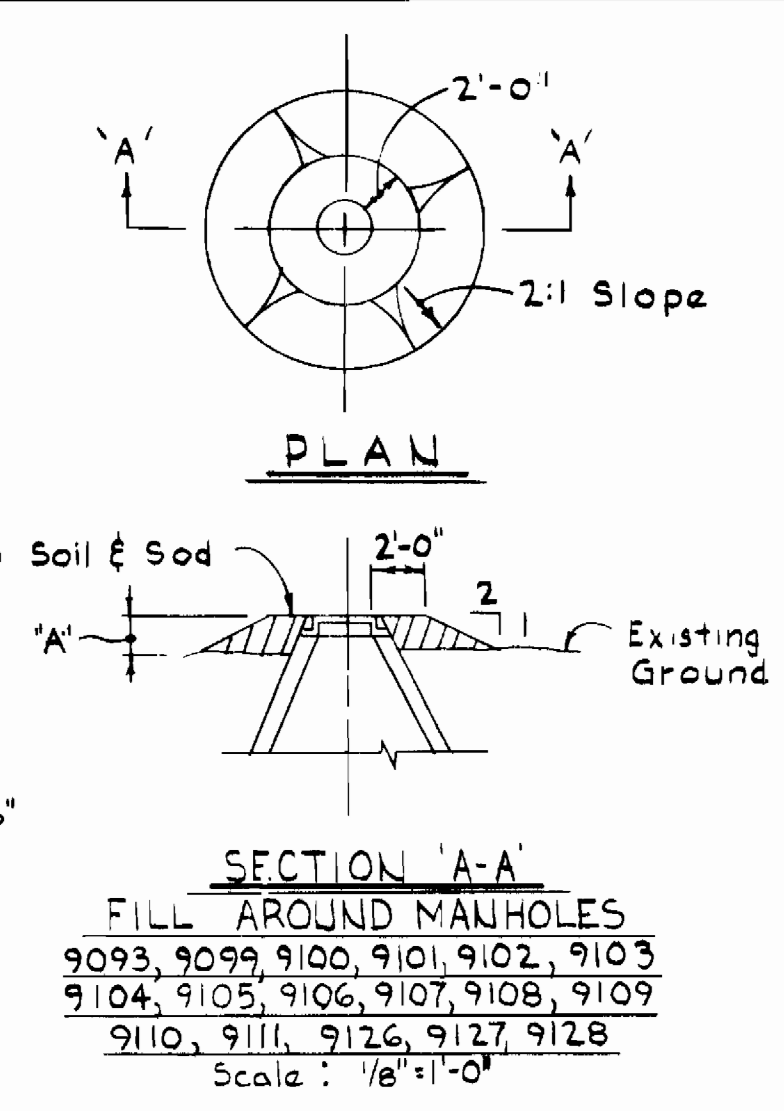
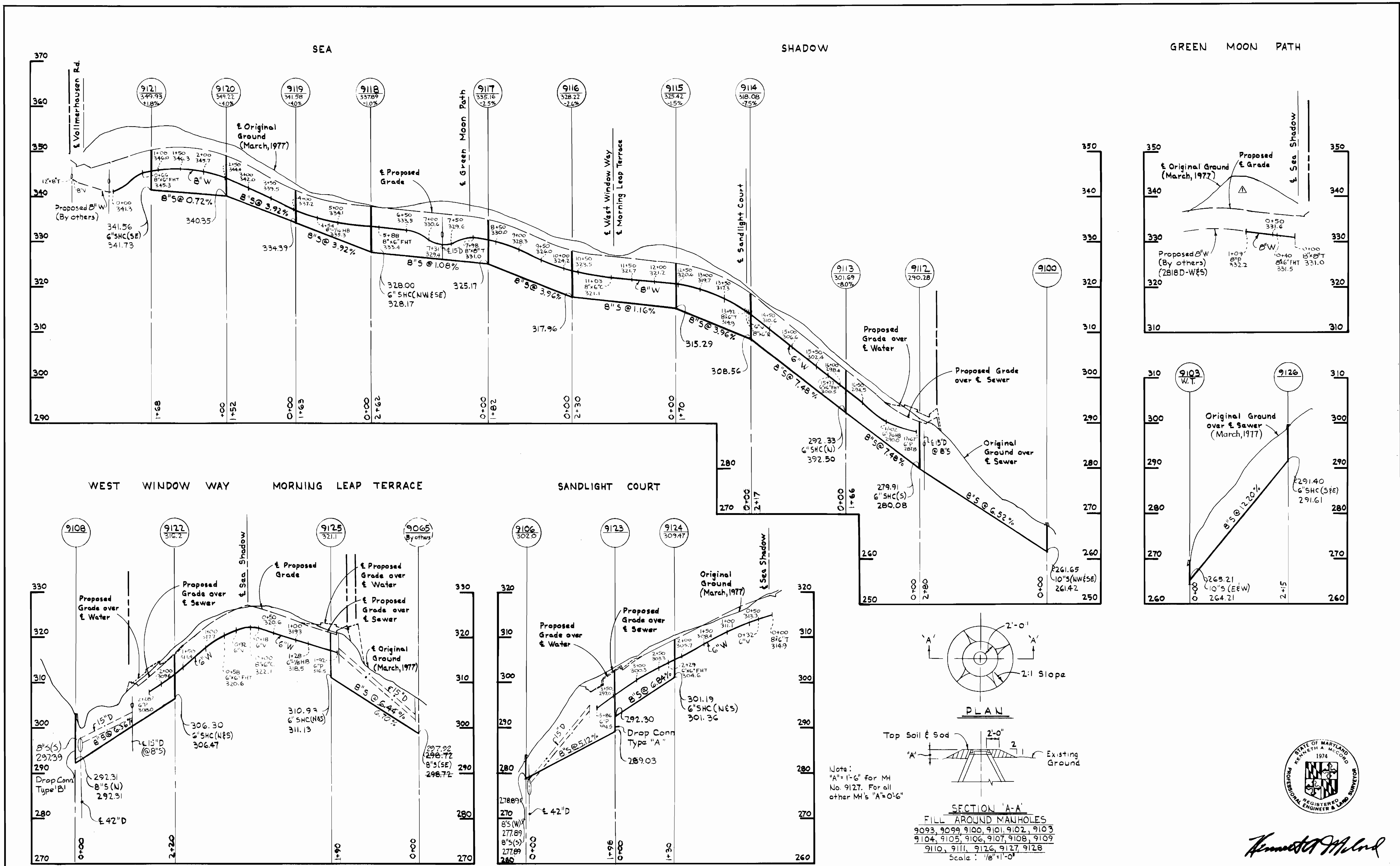
<b>WHITMAN, REQUARDT &amp; ASSOCIATES</b> ENGINEERS 1304 ST. PAUL ST. BALTIMORE, MARYLAND	<b>DEPARTMENT OF PUBLIC WORKS</b> HOWARD COUNTY, MARYLAND <i>Richard E. Sreedenberg</i> 12/8/78 DIRECTOR OF PUBLIC WORKS - DATE	CONTRACT NO. <b>2826D-W#5</b> <i>W.O. Albert</i> 12-7-78 CHIEF-BUREAU OF ENGINEERING - DATE	PLAN OF <b>WATER &amp; SEWER MAINS</b>	COLUMBIA <b>VILLAGE OF KINGS CONTRIVANCE</b> ELECTION DISTRICT GUILFORD NO.6	DRAWING NO. <b>4</b> OF <b>7</b>	SCALE <b>1" = 50'</b>
--	--	---	---	--	--	--------------------------



PROFILES  
 Scale: Horizontal = 1"=100'  
 Vertical = 1"=10'



WHITMAN, REQUARDT & ASSOCIATES ENGINEERS 1304 ST. PAUL ST. BALTIMORE, MARYLAND	DEPARTMENT OF PUBLIC WORKS HOWARD COUNTY, MARYLAND <i>Richard E. Brudenbury</i> 12/9/78 DATE	CONTRACT NO. 2826D-WBS <i>W.O. Talbot</i> 12-7-78 CHIEF BUREAU OF ENGINEERING	PLAN & PROFILES OF WATER & SEWER MAINS	COLUMBIA VILLAGE OF KINGS CONTRIVANCE ELECTION DISTRICT GUILFORD NO. 6	DRAWING NO. 5 OF 7	SCALE AS SHOWN
					DECEMBER 1, 1978	

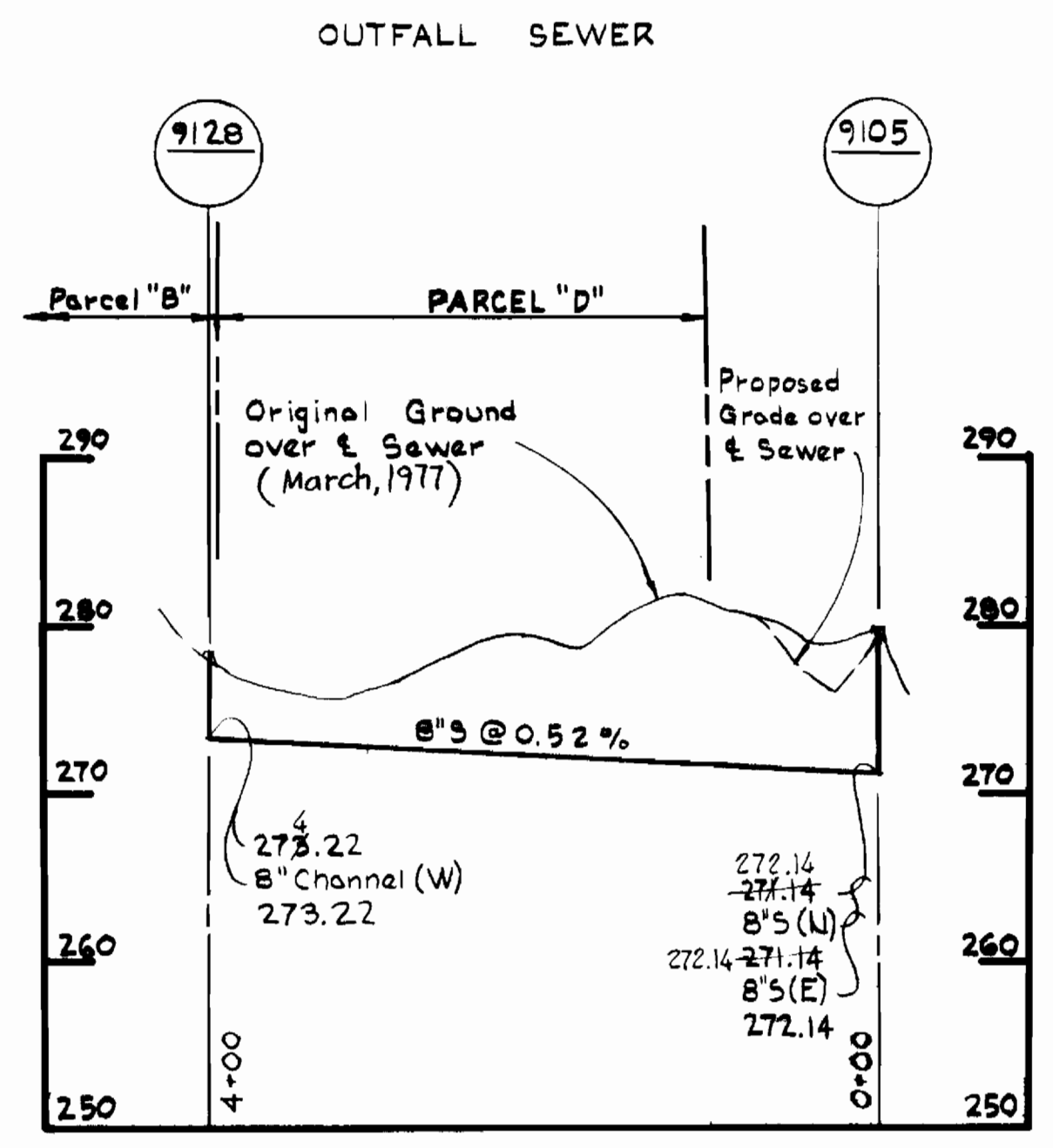
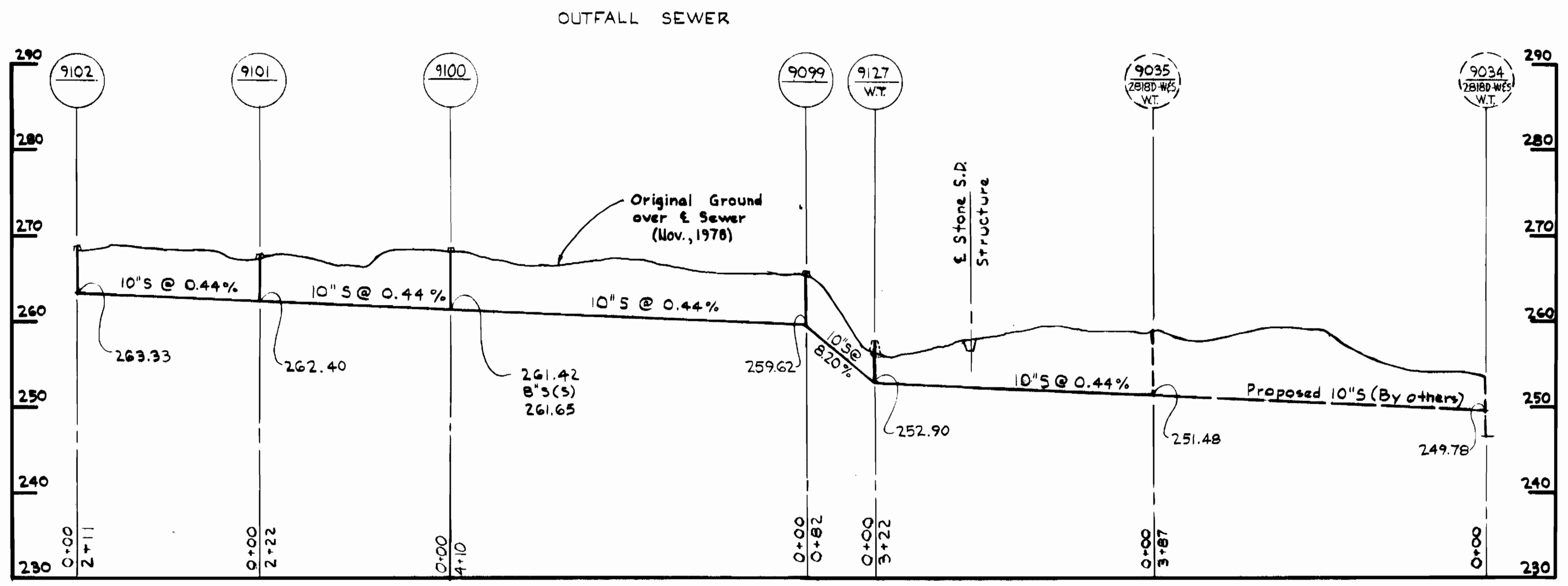
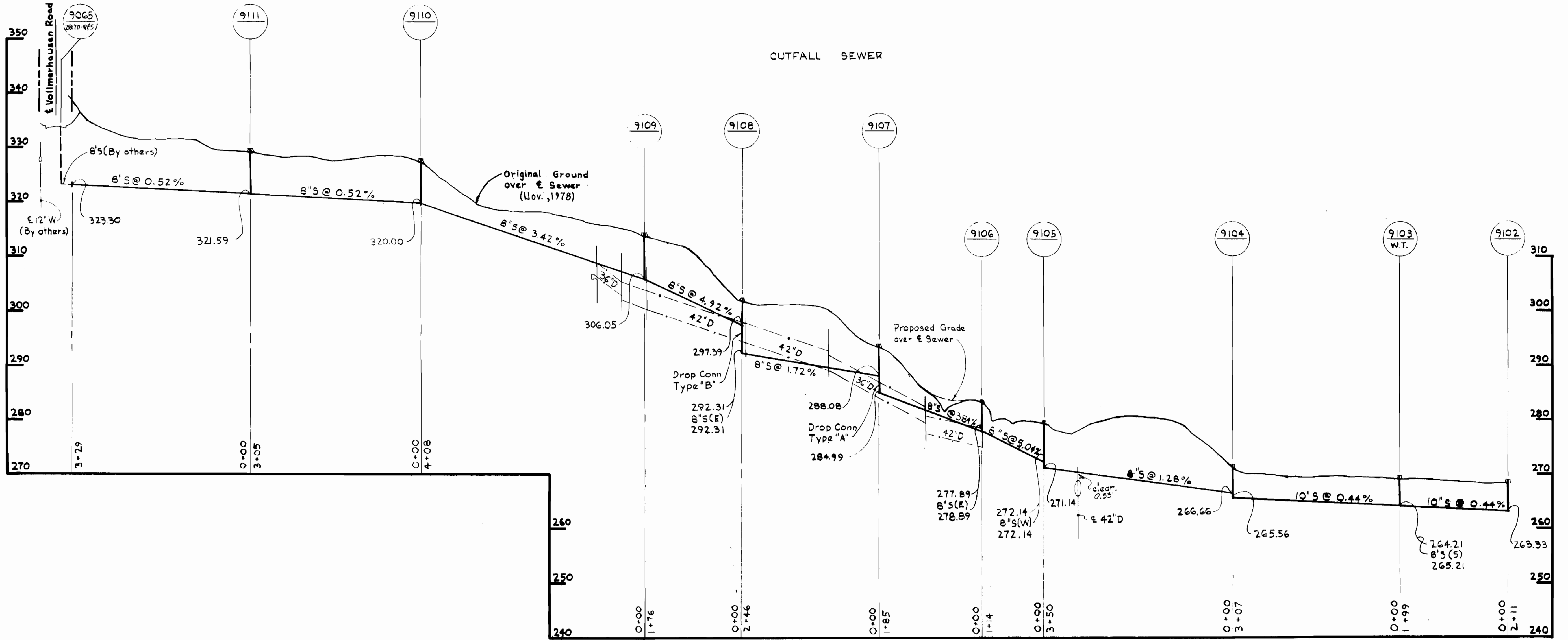


*Kenneth A. McCord*

Rev. No.	Description	Date
1	Corrections - Water Size	1/17/79

Village of Kings Contrivance  
 Section 3, Area 1, Phase III  
 Contract No. 2826D-W45

<b>WHITMAN, REQUARDT &amp; ASSOCIATES</b> ENGINEERS 1304 ST. PAUL ST. BALTIMORE, MARYLAND	<b>DEPARTMENT OF PUBLIC WORKS</b> HOWARD COUNTY, MARYLAND <i>Richard E. Brudenberg 12/9/78</i> DIRECTOR OF PUBLIC WORKS - DATE	<i>W.O. Fullert 12-7-78</i> CHIEF-BUREAU OF ENGINEERING - DATE	<b>CONTRACT NO. 2826D-W45</b>	<b>PROFILES OF                  WATER &amp; SEWER MAINS</b>	<b>COLUMBIA                  VILLAGE OF KINGS CONTRIVANCE                  ELECTION DISTRICT GUILFORD NO.6</b>	<b>DRAWING                  NO. 6                  OF 7</b>	<b>SCALE                  H: 1" = 10'                  V: 1" = 10'</b>
--	---	---	-------------------------------	---	--	---	--



*Harriet M. Lord*

Village of Kings Contrivance  
Section 3, Areal, Phase III  
Contract No. 2826D-W#5

WHITMAN, REQUARDT & ASSOCIATES  
ENGINEERS  
1304 ST. PAUL ST.  
BALTIMORE, MARYLAND

DEPARTMENT OF PUBLIC WORKS  
HOWARD COUNTY, MARYLAND  
*Richard L. Freudenberger* 12/27/78  
DIRECTOR OF PUBLIC WORKS — DATE  
*W. O. LaMont* 12-27-78  
CHIEF-BUREAU OF ENGINEERING — DATE

CONTRACT NO. 2826D-W#5

PROFILES OF  
WATER & SEWER MAINS

COLUMBIA  
VILLAGE OF KINGS CONTRIVANCE  
ELECTION DISTRICT GUILFORD NO.6

DRAWING NO. 7	SCALE H:V = 100'
OF 7	V:1" = 10'