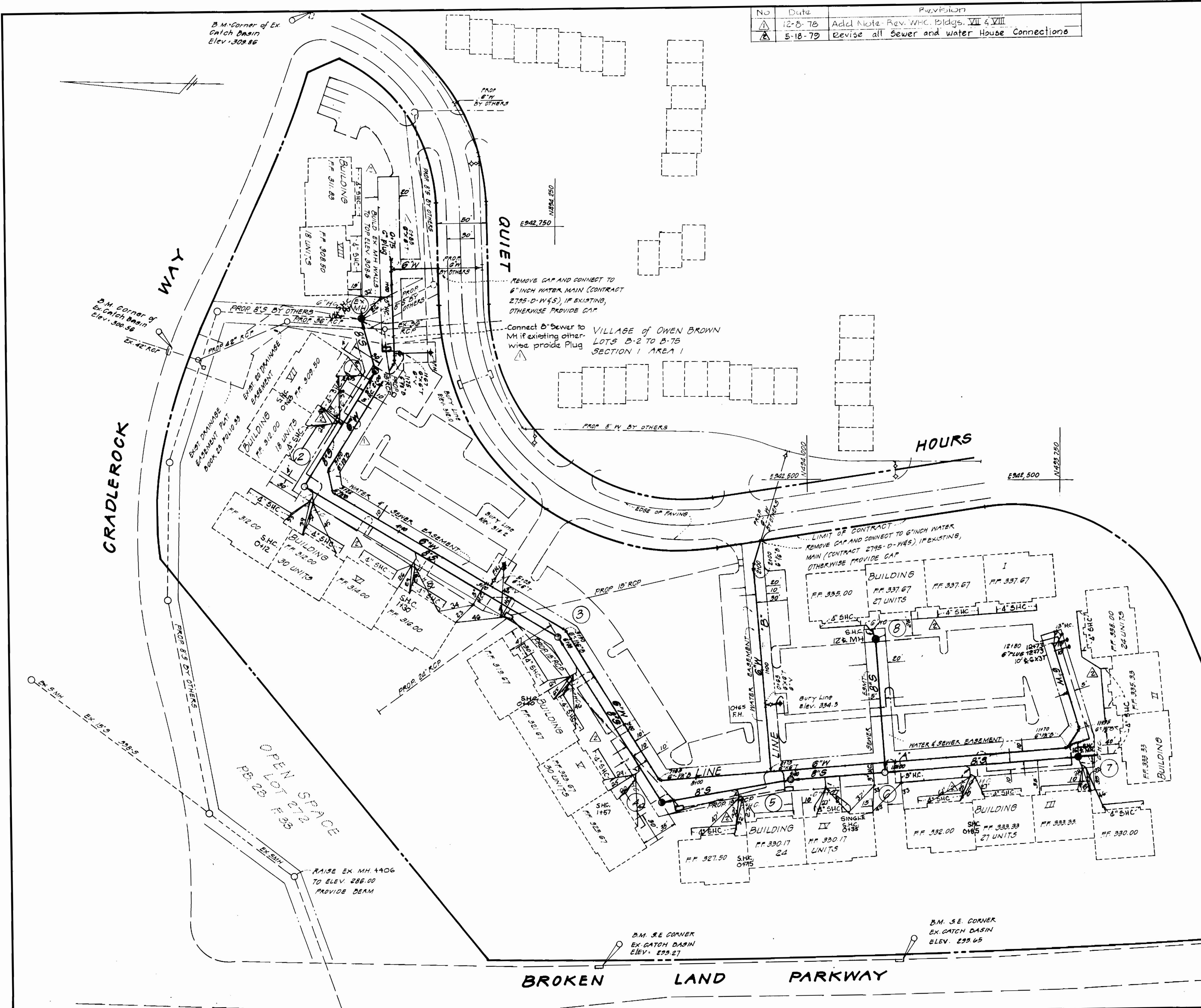
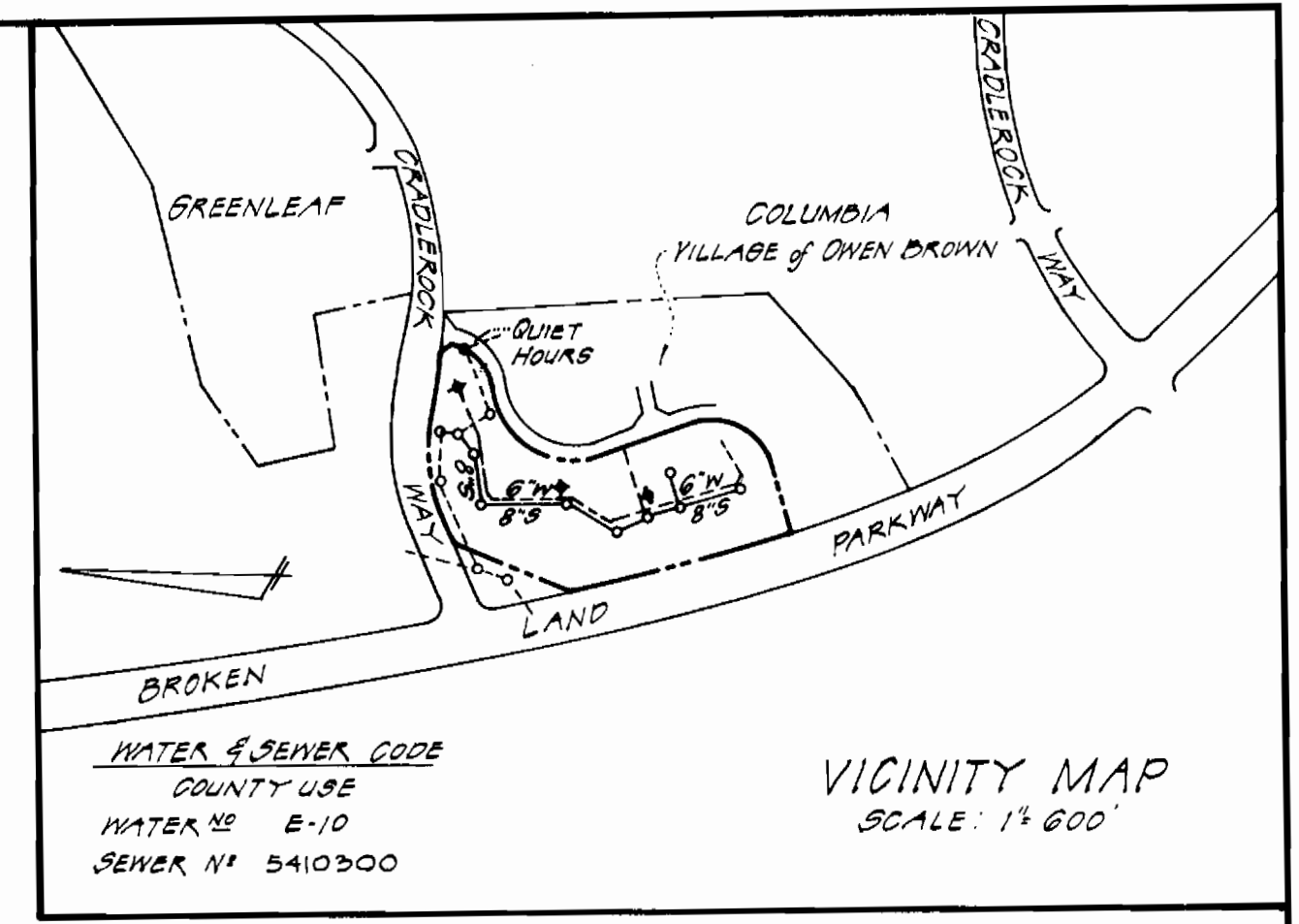


NO	Date	Provision
1	12-8-76	Add Note - Rev. W.C. Bldgs. VII & VIII
2	5-18-79	Revise all Sewer and water House Connections



- GENERAL NOTES**
- ALL WATER MAINS TO BE C.I.P., D.I.P., OR A.C.P. UNLESS OTHERWISE SHOWN.
 - TOP OF ALL WATER MAINS TO HAVE A MINIMUM OF 3.5 FT. COVER UNLESS OTHERWISE NOTED.
 - ALL VALVES SHALL BE STRAPPED TO TEES IN ACCORDANCE WITH STANDARD DETAILS.
 - BLOCK ALL FITTINGS WITH CONCRETE, SEE STANDARDS BOUND IN SPECIFICATIONS.
 - BURY LINE ELEVATIONS ON FIRE HYDRANTS SHALL BE STRAPPED AND BUTTRESSED WITH CONCRETE IN ACCORDANCE WITH STANDARD DETAILS. SOIL AROUND THE FIRE HYDRANTS TO BE COMPACTED IN ACCORDANCE WITH SECTION 5-15 OF THE STANDARD SPECIFICATIONS.
 - ALL SEWER MAINS SHALL BE C.S.P.X., V. C.P.X. OR A.C.P. CLASS 2400 UNLESS OTHERWISE NOTED.
 - THE CONTRACTOR SHALL PROVIDE A JOINT IN ALL SEWER MAINS WITHIN 2'-0" OF EXTERIOR MANHOLE WALL.
 - ALL MANHOLES SHALL BE 4'-0" INSIDE DIAMETER, UNLESS OTHERWISE NOTED.
 - APPROXIMATE LOCATIONS OF EXISTING MAINS ARE SHOWN. THE CONTRACTOR SHALL TAKE ALL NECESSARY PRECAUTION TO PROTECT EXISTING MAINS AND SERVICES AND MAINTAIN UNINTERRUPTED SUPPLY. ANY DAMAGE INCURRED SHALL BE REPAIRED IMMEDIATELY.
 - ALL HORIZONTAL CONTROLS ARE BASED ON MARYLAND STATE COORDINATES.
 - ALL VERTICAL CONTROLS ARE BASED ON U.S.G.S. DATUM.
 - ALL PIPE ELEVATIONS SHOWN ARE INVERT ELEVATIONS.
 - CLEAR ALL UTILITIES BY A MINIMUM OF 6", CLEAR ALL POLES BY 2'-0" MINIMUM OR TUNNEL AS REQUIRED.
 - FOR ALL STANDARD DETAILS SEE STANDARDS BOUND IN SPECIFICATIONS.
 - CONTRACTOR SHALL LOCATE EXISTING UTILITIES IN ADVANCE OF CONSTRUCTION OPERATIONS IN THE VICINITY OF PROPOSED UTILITIES.
 - CONTRACTOR SHALL NOTIFY THE FOLLOWING UTILITIES OR AGENCIES AT LEAST FIVE (5) DAYS BEFORE STARTING WORK SHOWN ON THESE PLANS:
 - STATE HIGHWAY ADMINISTRATION 531-5533
 - BALTIMORE GAS AND ELECTRIC COMPANY - UNDERGROUND ELECTRIC DISTRIBUTION
 - ENGINEERING - "DAMAGE CONTROL" - 234-5691
 - BALTIMORE GAS AND ELECTRIC COMPANY - UNDERGROUND GAS DISTRIBUTION ENGINEERS 39-8107
 - CHESAPEAKE AND POTOMAC TELEPHONE CO. 725-9976
 - AMERICAN TELEPHONE AND TELEGRAPH - CABLE LOCATION DIVISION - 301-303-3333
 - COLUMBIA PIPELINE COMPANY - 7814641
 - TREES ARE TO BE PROTECTED FROM DAMAGE TO MAXIMUM EXTENT. TREES LOCATED WITHIN THE CONSTRUCTION STRIP ARE NOT TO BE REMOVED OR DAMAGED BY THE CONTRACTOR.
 - CONTRACTOR SHALL REMOVE TREES, STUMPS AND ROOTS ALONG LINE OF EXCAVATION AS DIRECTED BY THE ENGINEER. PAYMENT FOR SUCH REMOVAL SHALL BE INCLUDED IN THE UNIT PRICE BID FOR EXCAVATION AND BACKFILL FOR WATER AND SEWER MAINS.
 - PLACE REGULATION "MEN WORKING" AND WARNING SIGNS AS REQUIRED TO COMPLY WITH MARYLAND STATE HIGHWAY ADMINISTRATION MANUAL OF TRAFFIC CONTROL FOR HIGHWAY CONSTRUCTION AND MAINTENANCE OPERATIONS.

Dr. Kalk...

QUANTITIES			
ITEM	BID	AS-BUILT	MATERIAL SUPPLIER
6" WATER	1565	1536.6	DIP GRIFFIN
8" SEWER	1220	1198	A.C.P. J.M.
F.H.S	3	3	MH

COLUMBIA
VILLAGE OF OWEN BROWN
SECTION 1 AREA 1 LOT B-1
WOODLAND APARTMENTS
CONTRACT NO. 10-19-76

DEWBERRY, NEALON & DAVIS
ENGINEERS-ARCHITECTS-PLANNERS-SURVEYORS
650 GOVERNOR RITCHIE HWY., SEVERNA PARK, MD. 21146

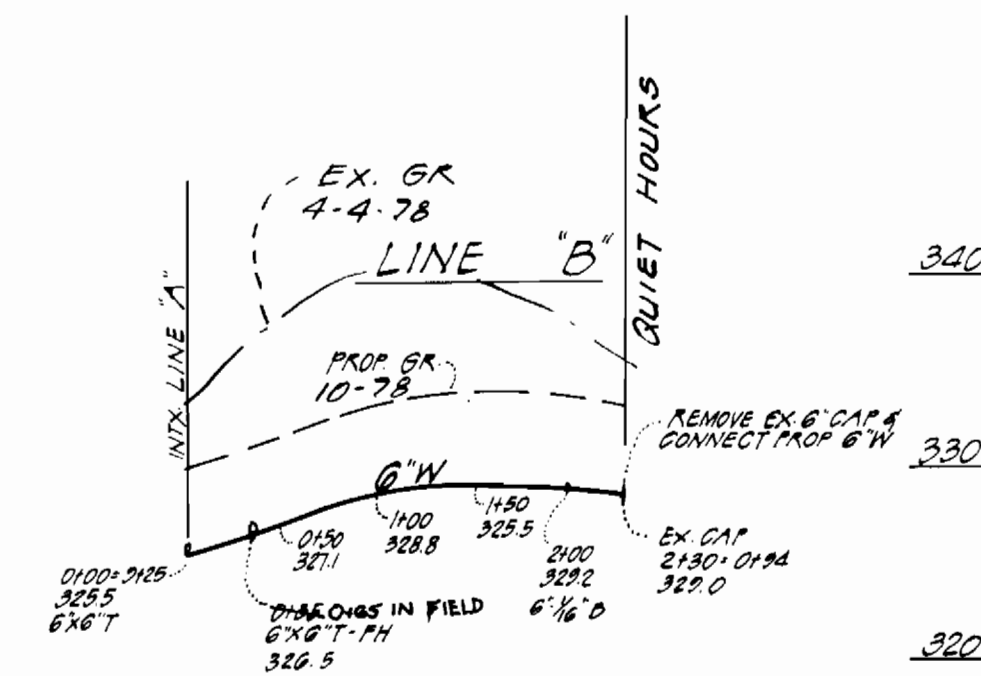
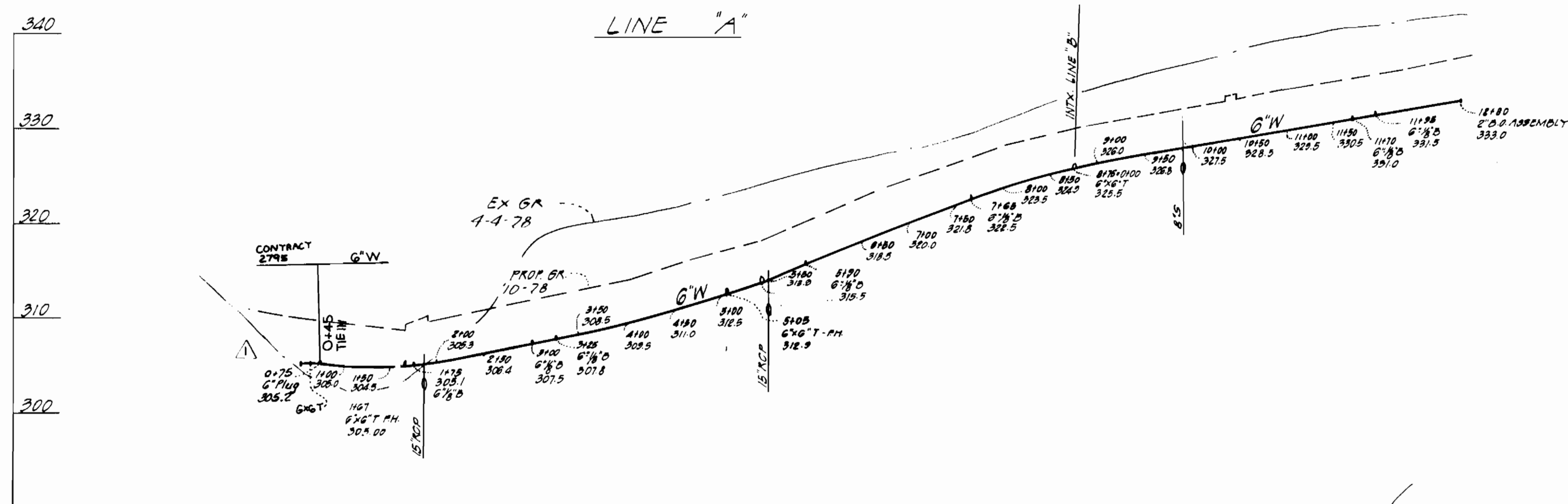
DEPARTMENT OF PUBLIC WORKS
HOWARD COUNTY, MARYLAND
Richard E. ...
DIRECTOR OF PUBLIC WORKS DATE

CONTRACT NO. 2825-D-W-55

PLAN OF
WATER & SEWER MAINS

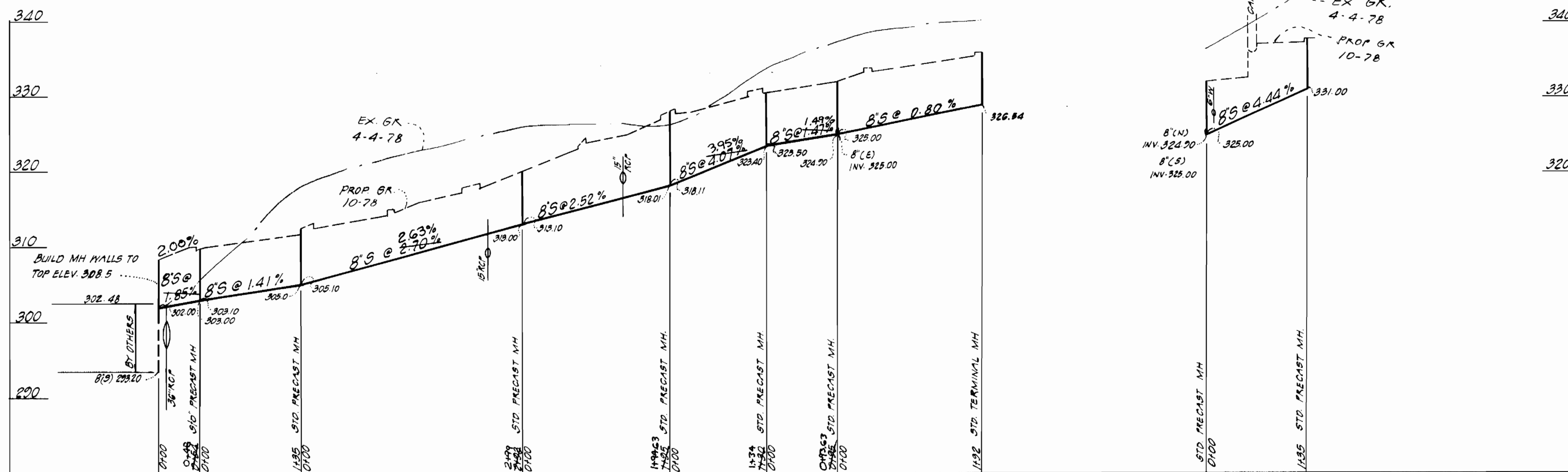
COLUMBIA
WOODLAND APARTMENTS
ELECTION DISTRICT - GUILFORD NO. 6

DRAWING NO. 1 OF 2 SCALE 1" = 50'



No	Date	Revision
1	5-18-79	Eliminate 75' of G' Water at Bldg. *VIII

- EX MH 308.5
- 1 308.8
- 2 312.3
- 3 320.0
- 4 328.0
- 5 330.5
- 6 332.0
- 7 336.0
- 8 332.0
- 9 337.8



COLUMBIA
VILLAGE OF OWEN BROWN
SECTION 1 AREA 1 LOT B-1
WOODLAND APARTMENTS
CONTRACT NO. 10-10-78



DEWBERRY, NEALON & DAVIS
ENGINEERS-ARCHITECTS-PLANNERS-SURVEYORS
650 GOVERNOR RITCHIE HWY., SEVERNA PARK, MD 21146

DEPARTMENT OF PUBLIC WORKS
HOWARD COUNTY, MARYLAND
Richard E. Brendenburger, 11/3/78
DIRECTOR OF PUBLIC WORKS DATE CHIEF BUREAU OF ENGINEERING DATE

CONTRACT NO. 825-D-145

PROFILES OF
WATER & SEWER MAINS

COLUMBIA
WOODLAND APARTMENTS
ELECTION DISTRICT - GUILFORD NO. 6

DRAWING NO. 2 OF 2 SCALE HORZ. 1"=100' VERT. 1"=10'