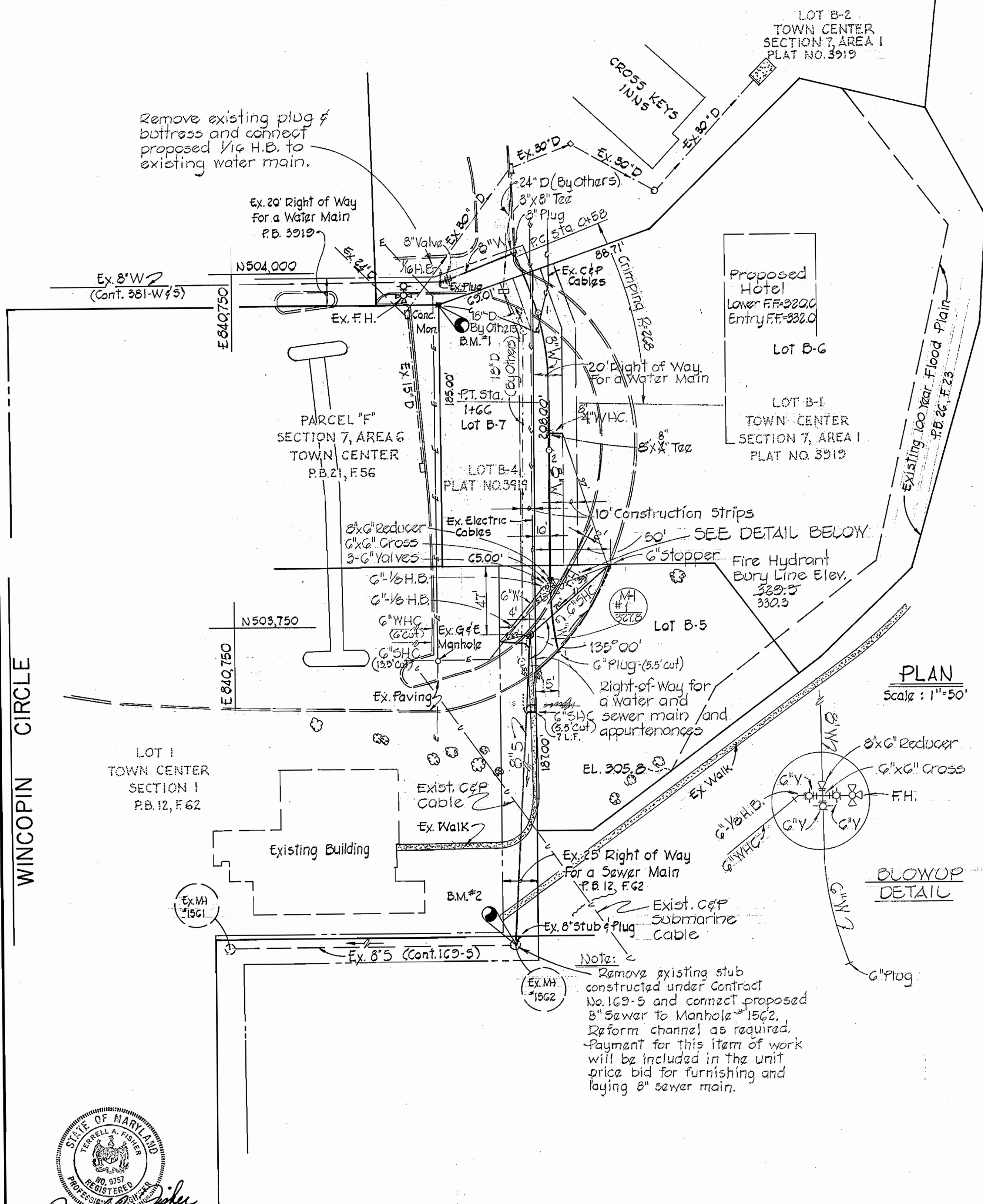


WS 822-WS/1

BENCH MARKS

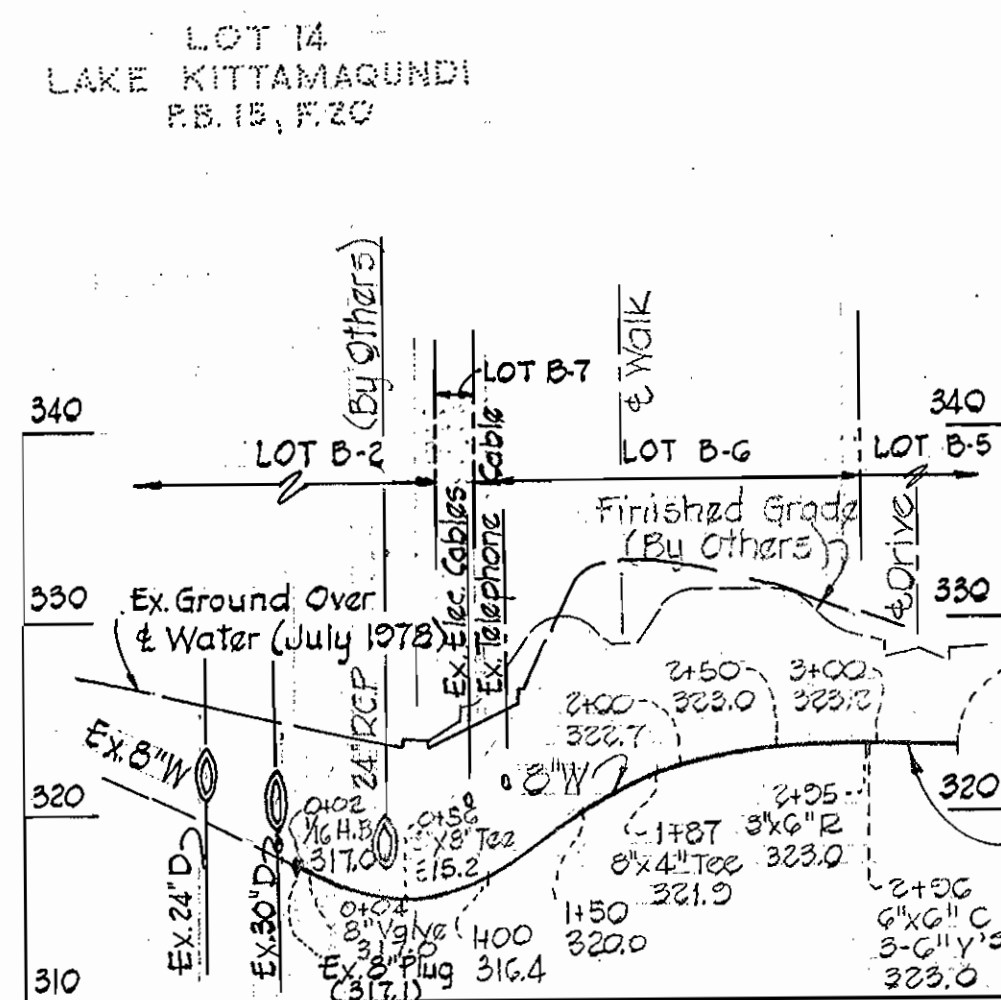
B.M.#1 Elev. 328.12'
Top Concrete Monument @ Northwest Corner of Lot B-7.
B.M.#2 Elev. 315.62'
Top Rim of Sanitary Manhole #1562 south of Lot B-5.



PLAN
Scale: 1"=50'

BLOWUP DETAIL

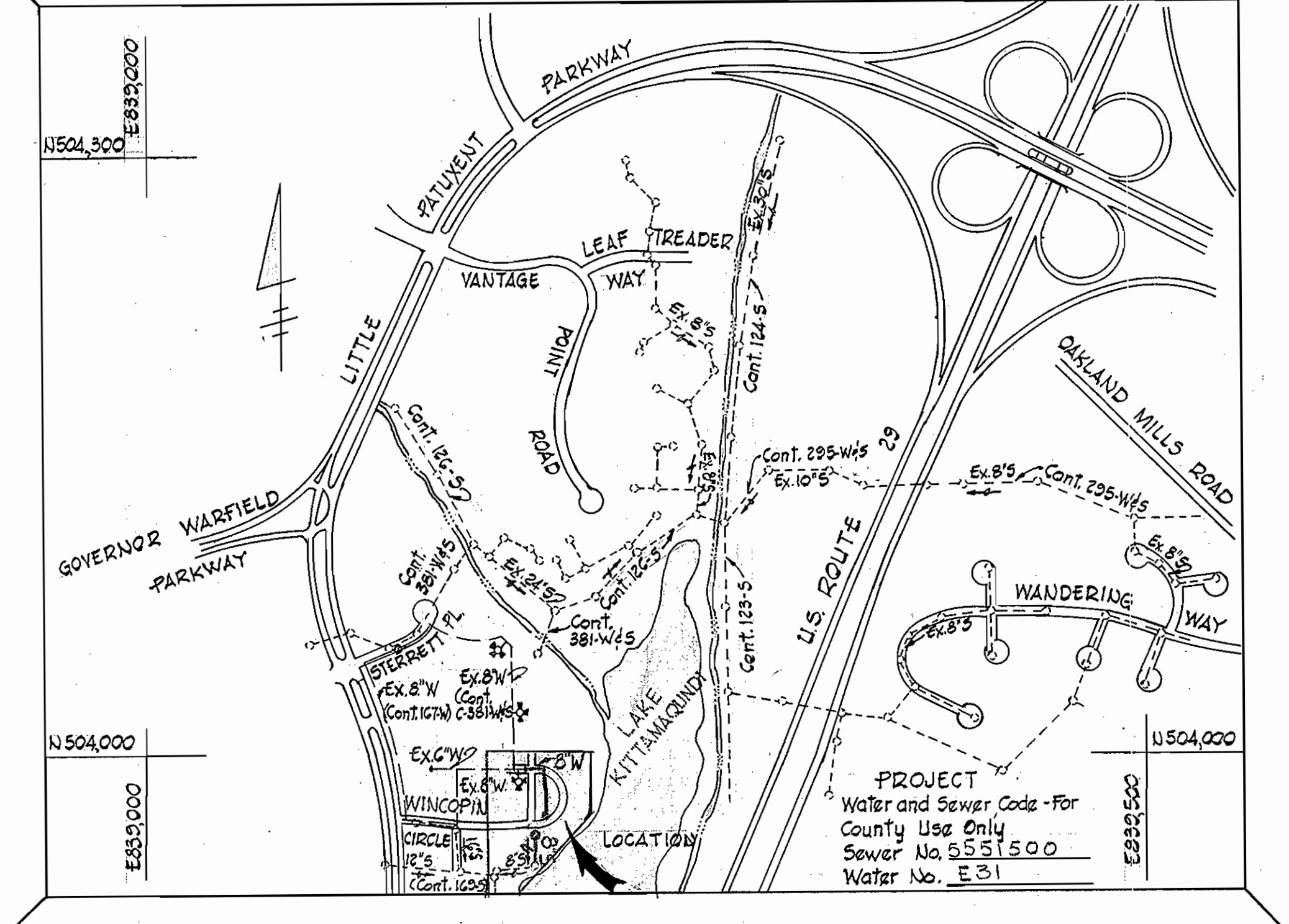
REV	DATE	REMARKS
Δ	5/11/79	Added C&P Cable; Moved MH #1 & re-set SHC to B-6; Added S.H.C. to Lot 1; Extended G"Y to B-5; Added W.H.C. to Lot 1.



PROFILE
Scale: Horizontal: 1"=100' Vertical: 1"=10'

TYPE BUILDINGS: Hotel, Restaurant, Gar.
NUMBER LOTS: 3
NUMBER Y.H.C.: 3
NUMBER S.H.C.: 3
DRAINAGE AREA: Little Patuxent

VICINITY MAP
SCALE: 1"=600'



GENERAL NOTES

- APPROXIMATE LOCATION OF EXISTING UTILITIES ARE SHOWN. THE CONTRACTOR SHALL TAKE ALL NECESSARY PRECAUTIONS TO PROTECT EXISTING MAINS AND SERVICES AND MAINTAIN UNINTERRUPTED SUPPLY. ANY DAMAGE INCURRED SHALL BE REPAIRED IMMEDIATELY.
- ALL PIPE ELEVATIONS SHOWN ARE INVERT ELEVATIONS.
- THE CONTRACTOR SHALL LOCATE EXISTING UTILITIES A MINIMUM OF TWO WEEKS IN ADVANCE OF CONSTRUCTION OPERATIONS IN VICINITY OF UTILITIES.
- FOR ALL STANDARD DETAILS SEE STANDARDS BOUND IN SPECIFICATIONS.
- CLEAR ALL UTILITIES BY A MINIMUM OF 6'; CLEAR ALL POLES BY 2'-0" MINIMUM OR TUNNEL, AS REQUIRED.
- THE CONTRACTOR SHALL PROVIDE A JOINT IN ALL SEWER MAINS WITHIN 2'-0" OF EXTERIOR MANHOLE WALLS.
- ALL MANHOLES SHALL BE 4'-0" INSIDE DIAMETER.
- ALL WATER MAINS TO HAVE A MINIMUM OF 3'-6" COVER, UNLESS OTHERWISE NOTED.
- BLOCK ALL FITTINGS WITH CONCRETE, SEE STANDARDS BOUND IN SPECIFICATIONS.
- ALL FIRE HYDRANTS SHALL BE STRAPPED TO THE TEE AND SHALL BE BUTTRESSED WITH CONCRETE IN ACCORDANCE WITH STANDARDS.
- BURY LINE ELEVATIONS ON FIRE HYDRANTS SHALL BE SET TO THE ELEVATIONS SHOWN ON THE DRAWINGS.
- COST OF STRAPPING FIRE HYDRANTS AND VALVES TO TEES TO BE INCLUDED IN THE UNIT PRICES BID FOR FURNISHING AND LAYING WATER MAINS.
- THE CONTRACTOR SHALL NOTIFY THE FOLLOWING UTILITIES OR AGENCIES AT LEAST FIVE (5) WORKING DAYS BEFORE STARTING WORK SHOWN ON THESE DRAWINGS.
BALTIMORE GAS AND ELECTRIC CO. - UNDERGROUND ELECTRIC - (234-5691).
C&P TELEPHONE CO. - (725-9976).
BALTIMORE GAS AND ELECTRIC CO. - UNDERGROUND GAS - (559-0100).
MISS UTILITY - (800-441-8355)
- ALL HORIZONTAL AND VERTICAL CONTROLS ARE BASED ON MARYLAND STATE DATUM.
- ALL SEWER MAINS SHALL BE C.S.P.X., V.C.P.X. OR A.C.P. CLASS 2400, UNLESS OTHERWISE NOTED.

ITEM	EST'D.	AS-BUILT	SUPPLIER
8" Sewer	221 LF	216 LF	Certain-tyed
6" Sewer	100 LF	95 LF	Certain-tyed
Manhole	1 Ea.	1	"
8" Water	295 LF	295 LF	Atlantic States
6" Water	100 LF	95 LF	Atlantic States
8" Valves	1 Ea.	2	American Darling
6" Valves	3 Ea.	3	"
Fire Hyd	1 Ea.	1	"

CONTRACT NO. 2822-D-W & S
TOWN CENTER SECTION 7, AREA I
WATER AND SEWER EXTENSION

FISHER, COLLINS AND CARTER, INC. CIVIL ENGINEERING CONSULTANTS 8388 COURT AVENUE ELLICOTT CITY, MARYLAND 21043	DEPARTMENT OF PUBLIC WORKS HOWARD COUNTY, MARYLAND <i>Richard E. Breidenbach</i> 10/27/78 DIRECTOR OF PUBLIC WORKS DATE	CONTRACT NO. 2822-D-W & S <i>W.D. Albert</i> 10-27-78 CHIEF BUREAU OF ENGINEERING DATE	PLAN & PROFILES OF WATER & SEWER MAINS	COLUMBIA TOWN CENTER ELECTION DISTRICT CLARKSVILLE NO.5	DRAWING NO. 1 OF 1	SCALE AS SHOWN	DESIGNED: T.A.P. DRAFTED: D.B.S. CHECKED: T.A.P.
					REV. 5-11-79 AS BUILT 8-12-80	OCTOBER 17, 1978	