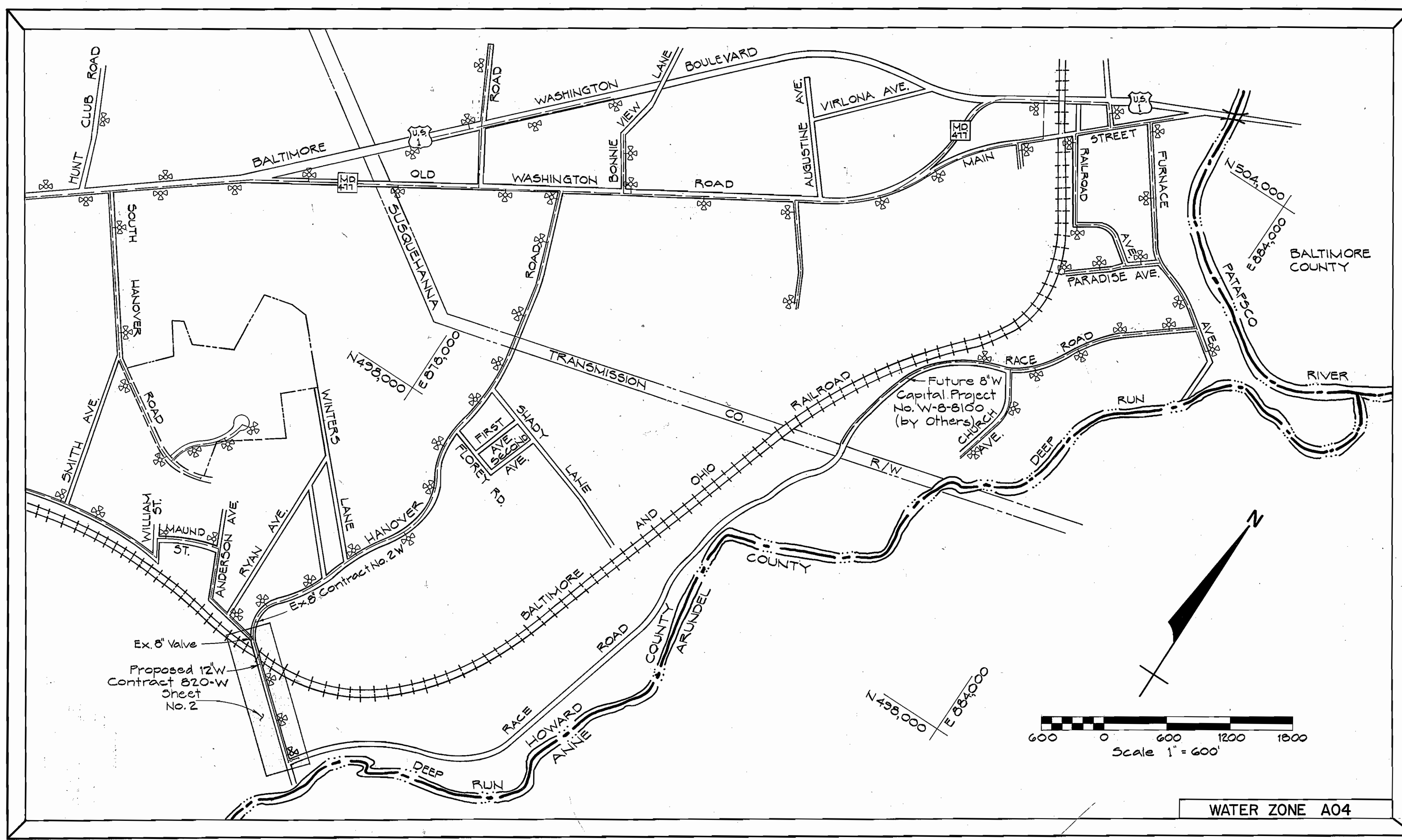


GENERAL NOTES

- Approximate locations of existing mains are shown. The contractor shall take all necessary precautions to protect existing services and maintain uninterrupted supply. Any damage incurred due to the contractor's operations shall be repaired immediately at the contractor's expense.
- All pipe elevations shown are \odot invert elevations.
- The contractor shall locate existing utilities a minimum of two weeks in advance of construction operations in the vicinity of proposed utilities.
- For standard details see standards bound in specifications.
- Clear all utilities by a minimum of 6". Clear all utility poles by 2'-0" minimum or tunnel as required. Any costs incurred to the contractor for tunneling or bracing at poles shall be included in unit price bid for excavation.
- Contractor shall notify the following utilities or agencies at least five (5) days before starting work shown on these plans:
 Baltimore Gas & Electric Company - Underground Gas Distribution Engineering - 559-0100
 Chesapeake and Potomac Telephone Company - 725-9976
 Miss Utility - 1-800-393-3648
- Top of all water mains to have a minimum of 3'-6" cover unless otherwise noted.
- All valves shall be strapped to tees, where applicable, in accordance with standard details.
- Buttress or anchor all water main fittings with concrete, in accordance with details in the specifications.
- Bury line elevations on fire hydrants shall be set to the elevations shown on the drawings. All fire hydrants shall be strapped and buttressed with concrete in accordance with standard details. Soil around the fire hydrants to be compacted in accordance with Section 5-15 of the Standard Specifications.
- Cost of strapping fire hydrants and valves to be included in the unit price bid for furnishing and installing fire hydrants.
- All rights-of-way for fire hydrants are in accordance with Standard Detail W-47 unless otherwise noted.
- Horizontal control is based on the Maryland State Grid Coordinate System.
- All vertical controls are based on U.S.G.S. Datum.
- Trees are to be protected from damage to maximum extent. Trees located within the construction strip are not to be removed or damaged by the contractor.
- Contractor shall remove trees, stumps and roots along line of excavation as directed by the Engineer. Payment for such removal shall be included in the unit price bid for excavation and backfill for water mains.
- Place regulation "Men Working" and warning signs as required to comply with Maryland State Highway Administration Manual of Traffic Control for Highway Construction and Maintenance Operations.
- All water mains to be C.I.P., D.I.P., or A.C.P. unless otherwise noted.
- All water house connection shall have inside meter settings.
- DIP shall be class 52 for 12", and 8" and class 53 for 6" diameters ACP shall be class 200 for all sizes.



QUANTITIES			
ITEM	ESTIMATED	"AS-BUILT"	SUPPLIER
12"W	1230 LF	1230	D.I.P.
8"W	48 LF	48	
6"W	45 LF	44	
FIRE HYDRANT	3 each		
16" STEEL CASING PIPE	78 LF		
12" STEEL WATER PIPE	78 LF		
W.H.C.	84 LF		

CAPITAL PROJECT W- 8-8101
CONTRACT NO. 820-W
HANOVER ROAD WATER MAIN EXTENSION
HOWARD COUNTY MARYLAND
DEPARTMENT OF PUBLIC WORKS

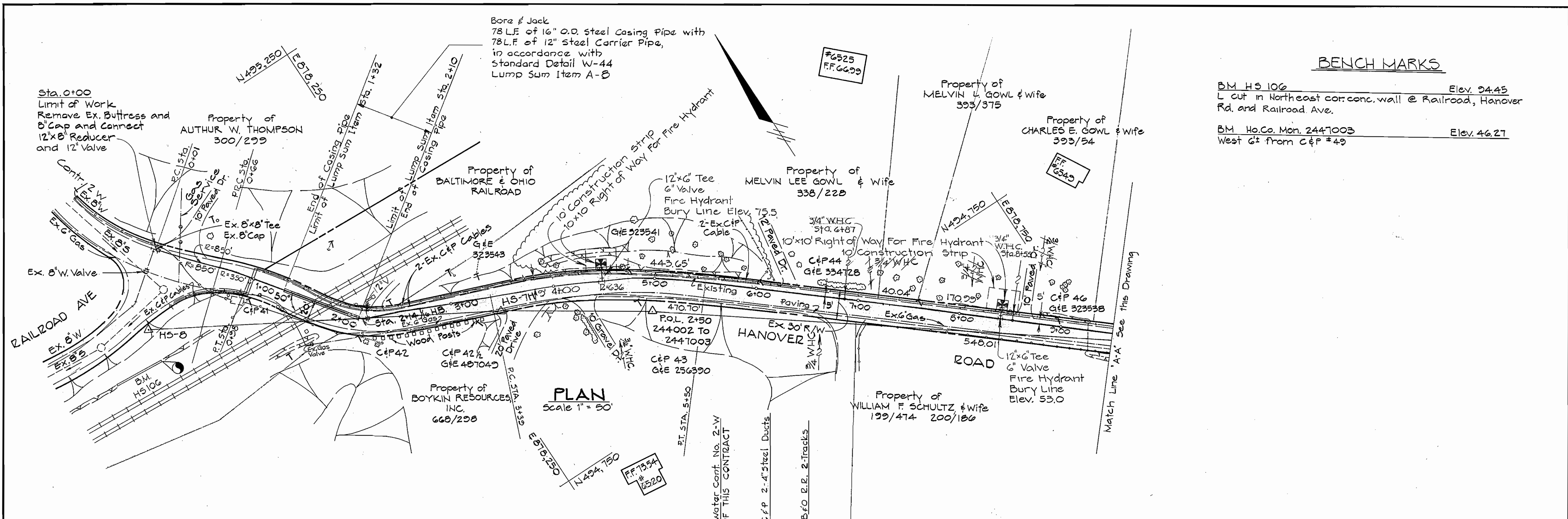


CONTRACT NO. 820-W
 HANOVER ROAD WATER MAIN EXTENSION
 HOWARD COUNTY CAPITAL PROJECT NO. W-8-8101

PURDUM & JESCHKE ENGINEERS 1023 N. CALVERT ST. BALTIMORE, MARYLAND	DEPARTMENT OF PUBLIC WORKS HOWARD COUNTY, MARYLAND 5-4-79 DATE	CONTRACT NO. 820-W CAPITAL PROJECT NO. W-8-8101	VICINITY MAP	HANOVER ROAD-WATER MAIN EXTENSION FIRST ELECTION DISTRICT HOWARD COUNTY, MARYLAND	DRAWING NO. 1	SCALE AS SHOWN	Designed: PWR Drafted: PWR
					OF 2	DATE 9-5-78	

WS 820-W / 1

WS 820-W/2



Bore & Jack
78 L.F. of 16" O.D. Steel Casing Pipe with
78 L.F. of 12" Steel Carrier Pipe,
in accordance with
Standard Detail W-44
Lump Sum Item A-B

BENCH MARKS

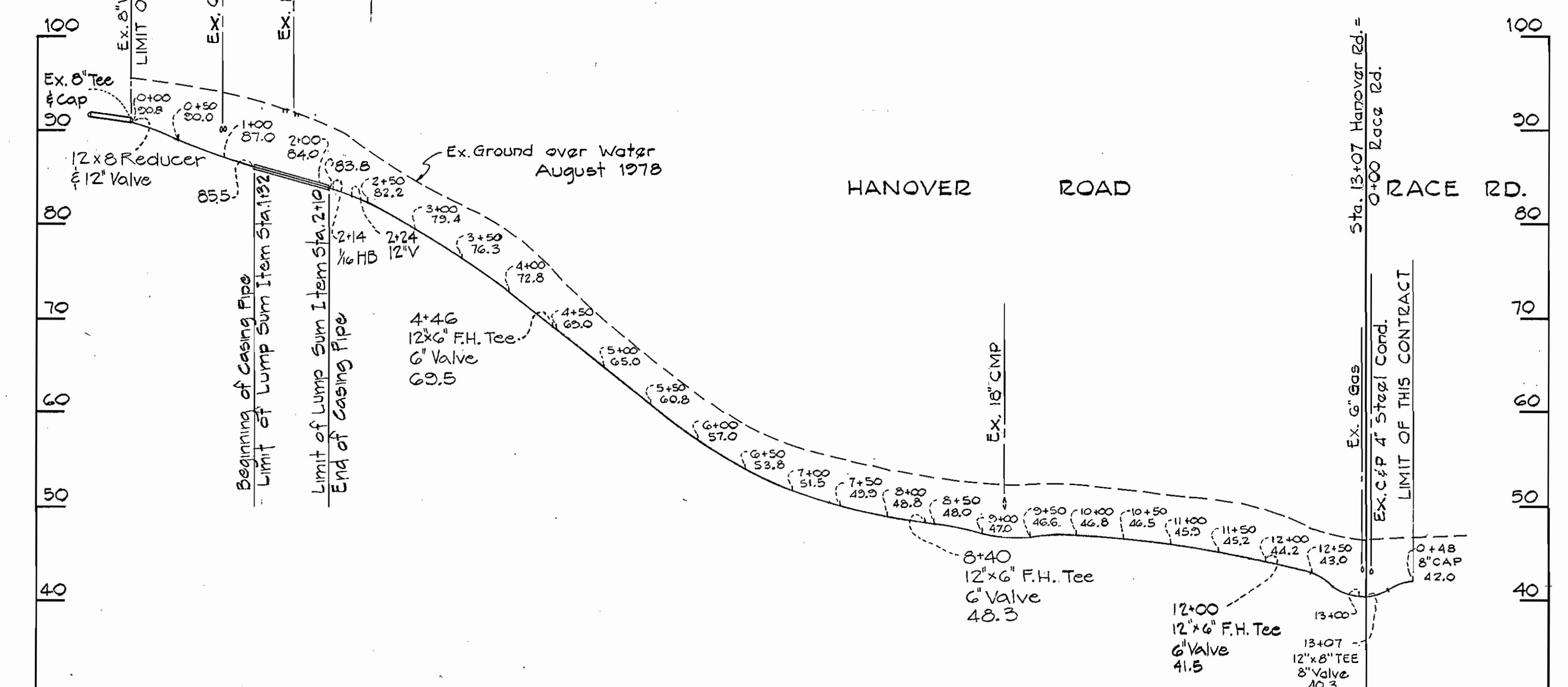
BM HS 106 Elev. 34.45
L cut in Northeast cor. wall @ Railroad, Hanover Rd. and Railroad Ave.
BM Ho.Co. Mon. 2447003 Elev. 46.27
West 6' from C&P #49

PLAN
Scale 1" = 50'

Note: F.H. @ Sta. 12+00
to be set @ Road R/W Line.

Property of
EMERY L. GOWL & Wife
284/506

Note: Howard County
Monument must not
be disturbed during
construction.



PROFILE
HORIZ. 1" = 100'
VERT. 1" = 10'



PURDUM & JESCHKE
ENGINEERS
1023 N. CALVERT ST.
BALTIMORE, MARYLAND

DEPARTMENT OF PUBLIC WORKS
HOWARD COUNTY, MARYLAND
5-4-79 DATE
5-3-79 DATE

CONTRACT NO. 820-W
CAPITAL PROJECT NO. W-8-8101

PLAN AND PROFILE

HANOVER ROAD-WATER MAIN EXTENSIONS
FIRST ELECTION DISTRICT
HOWARD COUNTY, MARYLAND

DRAWING NO. 2 OF 2	SCALE AS SHOWN	Designed PWR Drafted PWR Checked RHB Date 9-5-78
--------------------	----------------	---