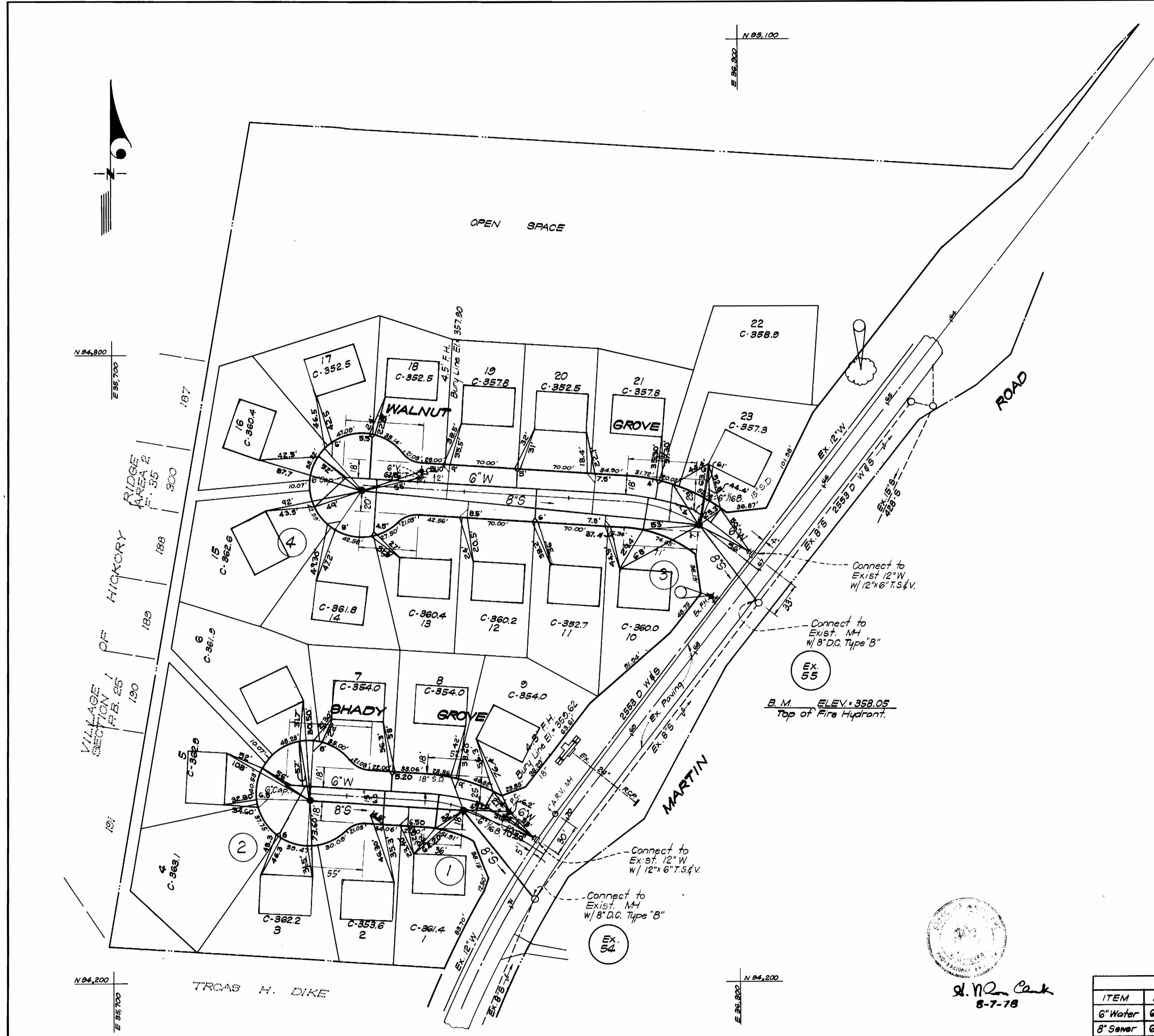


GENERAL NOTES

- All water mains to be C.I.P., D.I.P. or A.C.P. unless otherwise shown.
- Top of all water mains to have a minimum of 3.5 ft. cover unless otherwise noted.
- All valves shall be strapped to tees in accordance with standard details.
- Block all fittings with concrete, see standards bound in specifications.
- Bury line elevations on fire hydrants shall be set to the elevations shown on the drawings. All fire hydrants shall be strapped and buttressed with concrete in accordance with standard details. Soil around the fire hydrants to be compacted in accordance with Section 5-15 of the Standard Specifications.
- All sewer mains shall be C.B.P.X., V.C.P.X., or A.C.P. Class 2400 unless otherwise noted.
- The contractor shall provide a joint in all sewer mains within 2'-0" of exterior manhole wall.
- All manholes shall be 4'-0" inside diameter, unless otherwise noted.
- Approximate locations of existing mains are shown. The contractor shall take all necessary precautions to protect existing mains and services, and maintain uninterrupted supply. Any damage incurred shall be repaired immediately.
- All horizontal controls are based on Maryland State Coordinates.
- All vertical controls are based on U.S.G.S. Datum.
- All pipe elevations shown are invert elevations.
- Clear all utilities by a minimum of 6'; clear all poles by 2'-0" minimum or tunnel as required.
- For all standard details see standards bound in specifications.
- Contractor shall locate existing utilities in advance of construction in the vicinity of proposed utilities.
- Contractor shall notify the following utilities or agencies at least five (5) days before starting work shown on these plans.
State Highway Administration - 531-5533
Baltimore Gas and Electric Company - Underground Electric Distribution Engineering - 294-5681
Baltimore Gas and Electric Company - Underground Gas Distribution Engineering - 555-0100
Chesapeake and Potomac Telephone Co. - 725-2976
American Telephone and Telegraph - Cable Location Division - 301-303-8553
Colonial Pipeline Company - 781-4641.
- Trees are to be protected from damage to maximum extent. Trees located within the construction strip are not to be removed or damaged by the contractor.
- Contractor shall remove trees, stumps and roots along line of excavation as directed by the Engineer. Payment for such removal shall be included in the unit price bid for excavation and backfill for Water and Sewer mains.
- Place regulation "Men Working" and warning signs as required to comply with Maryland State Highway Administration Manual of Traffic Control for Highway Construction and Maintenance Operations.



R. L. Brudeney
8-7-78

QUANTITIES			
ITEM	BID	AS-BUILT	MATERIAL/SUPPLIER
6" Water	650 LF	667	D.I.P.
8" Sewer	675 LF	555	ACP
F.H.	2		

COLUMBIA
"CLEMENS SQUARE"
SECTION 1 AREA 1
LOTS 1 THRU 23
CONTRACT NO 2810 D W&S

CFS CLARK • FINEFROCK & SACKETT
ENGINEERS • PLANNERS • SURVEYORS
11315 LOCKWOOD DRIVE • SILVER SPRING, MARYLAND • (301) 593-3400

DEPARTMENT OF PUBLIC WORKS
HOWARD COUNTY, MARYLAND
Richard L. Brudeney 9/20/78
Director of Public Works DATE

WOLFORD
9-19-78
Chief, Bureau of Engineering DATE

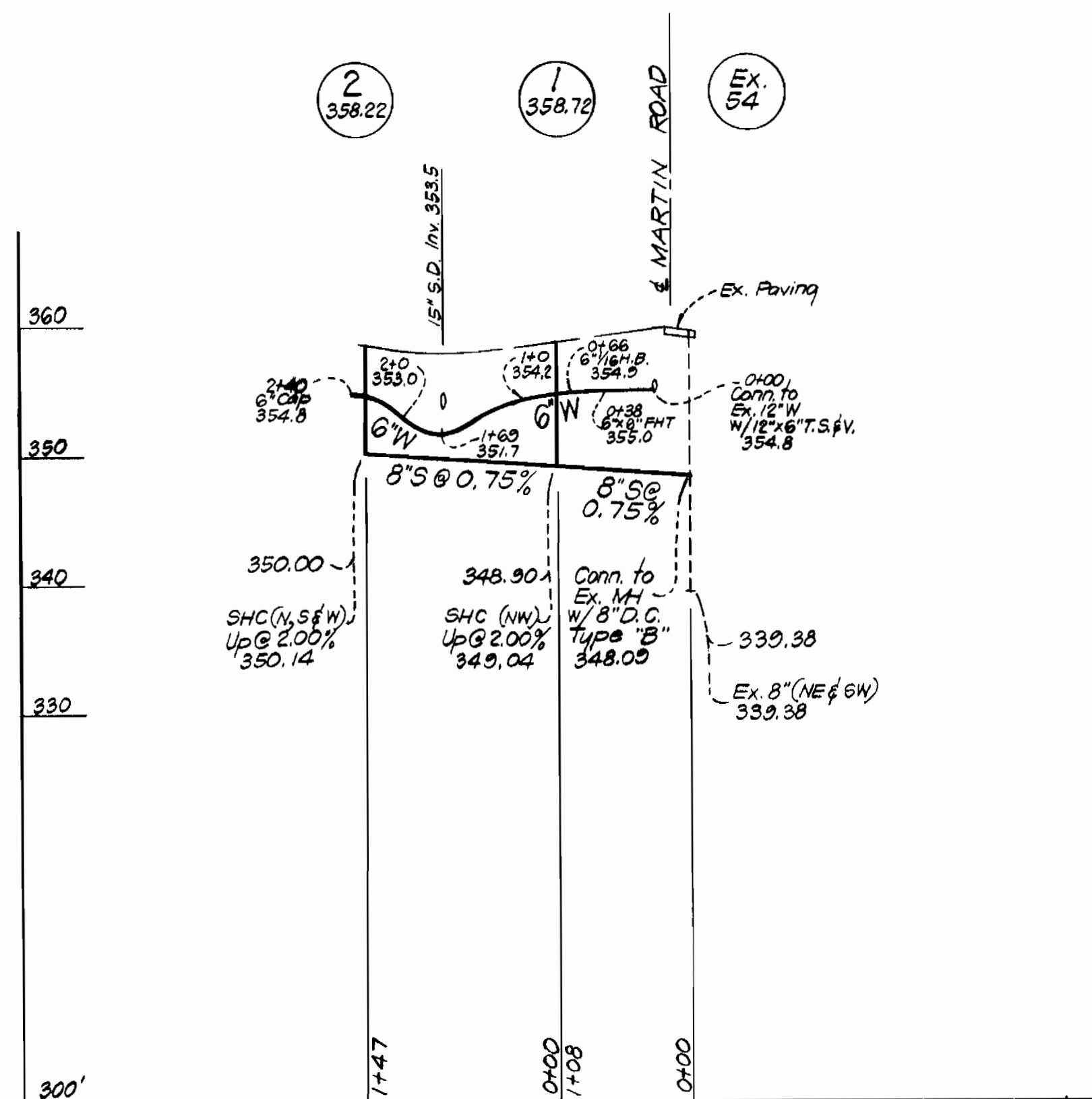
CONTRACT NO. 2810 D W&S

PLAN OF
WATER & SEWER MAINS

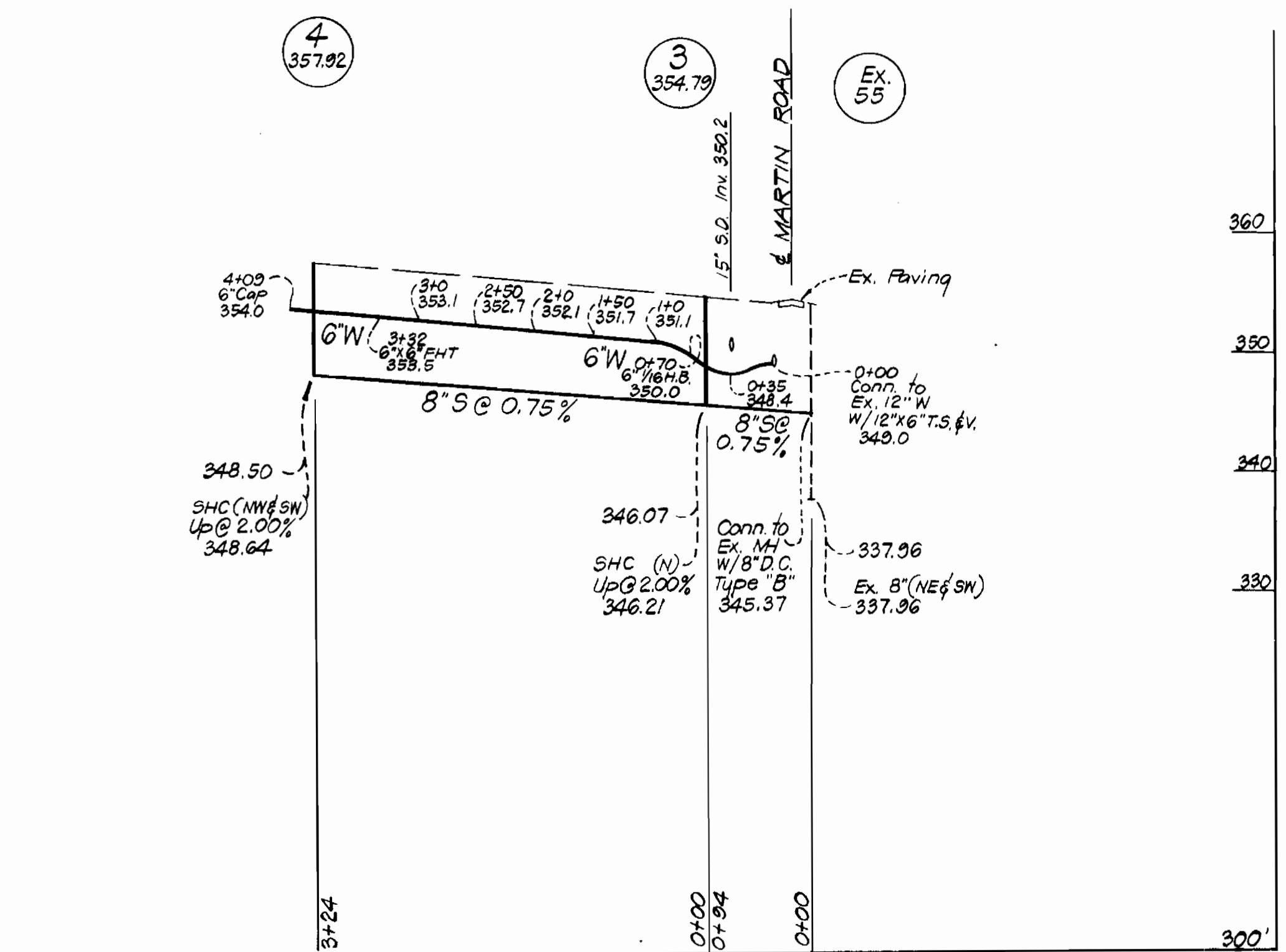
COLUMBIA
CLEMENS SQUARE
ELECTION DISTRICT GUILFORD No. 6

DRAWING NO. 1 OF 2 SCALE 1"=50'

SHADY GROVE



WALNUT GROVE



R. E. Brandenburg
8-7-78

CLARK • FINEFROCK & SACKETT
ENGINEERS • PLANNERS • SURVEYORS
11315 LOCKWOOD DRIVE • SILVER SPRING, MARYLAND • (301) 593-3400

DEPARTMENT OF PUBLIC WORKS
HOWARD COUNTY, MARYLAND
Richard E. Brandenburg 9/29/78
DIRECTOR OF PUBLIC WORKS DATE

W. O. Gilbert 9-19-78
CHIEF, BUREAU OF ENGINEERING DATE

CONTRACT NO. 2810 D WES

PROFILE OF
WATER & SEWER MAINS

COLUMBIA
CLEMENS SQUARE
ELECTION DISTRICT - GUILFORD No. 6

DRAWING
NO. 2
OF 2

SCALE
HOR. : 1"=100'
VER. : 1"=10'