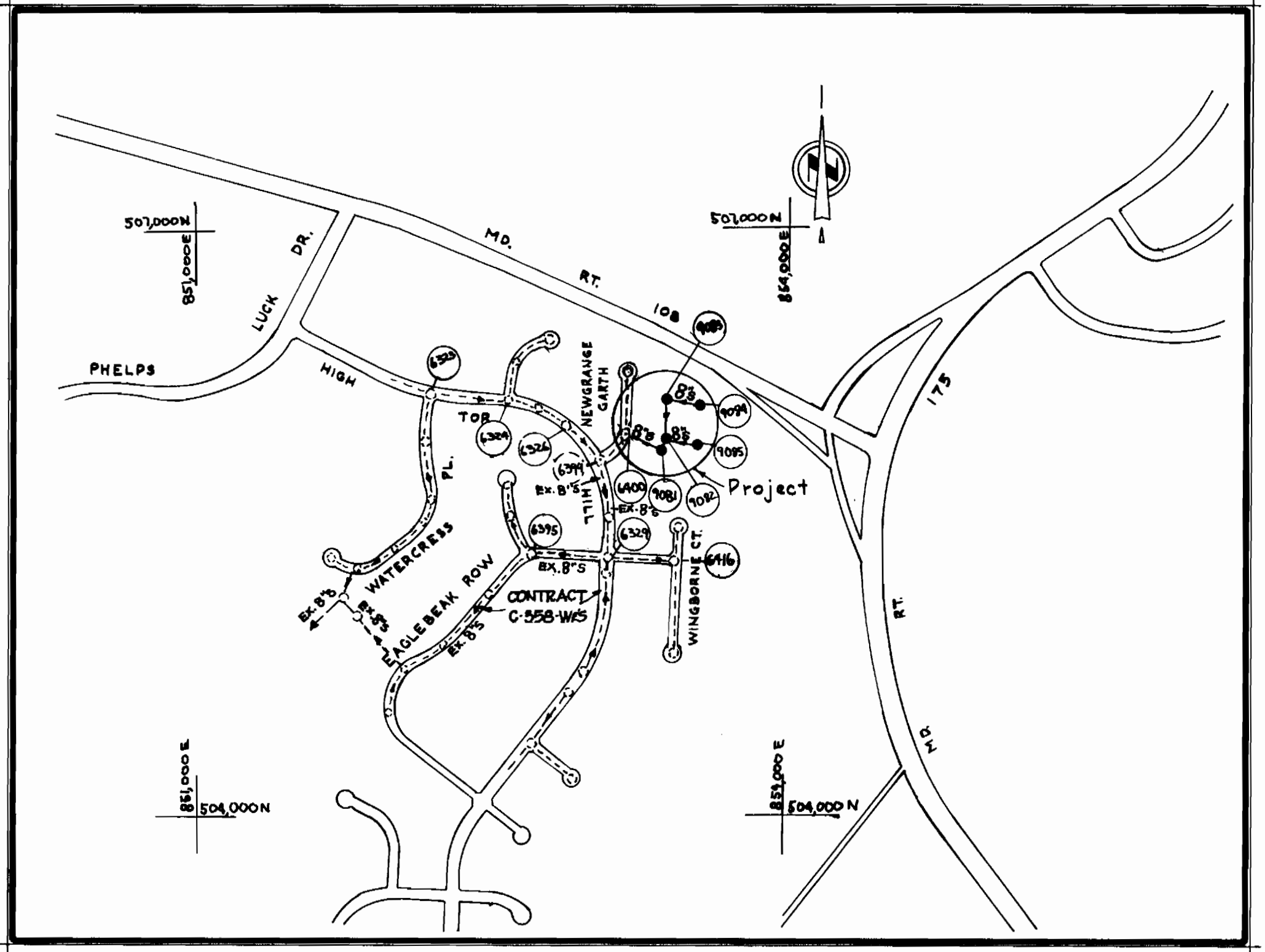


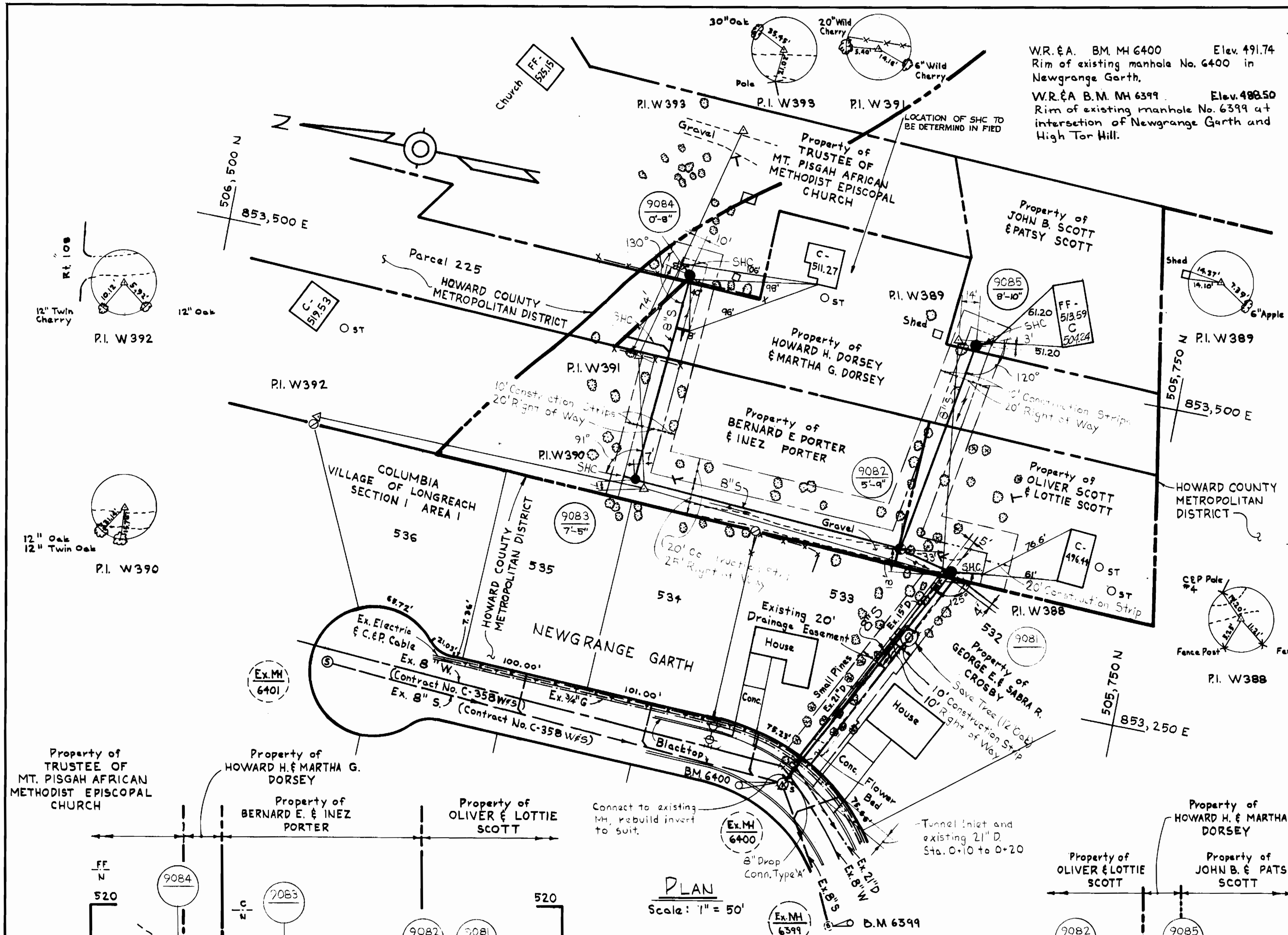
W.R. & A. B.M. MH 6400 Elev. 491.74
 Rim of existing manhole No. 6400 in
 Newgrange Garth.
 W.R. & A. B.M. MH 6399 Elev. 488.50
 Rim of existing manhole No. 6399 at
 intersection of Newgrange Garth and
 High Tor Hill.



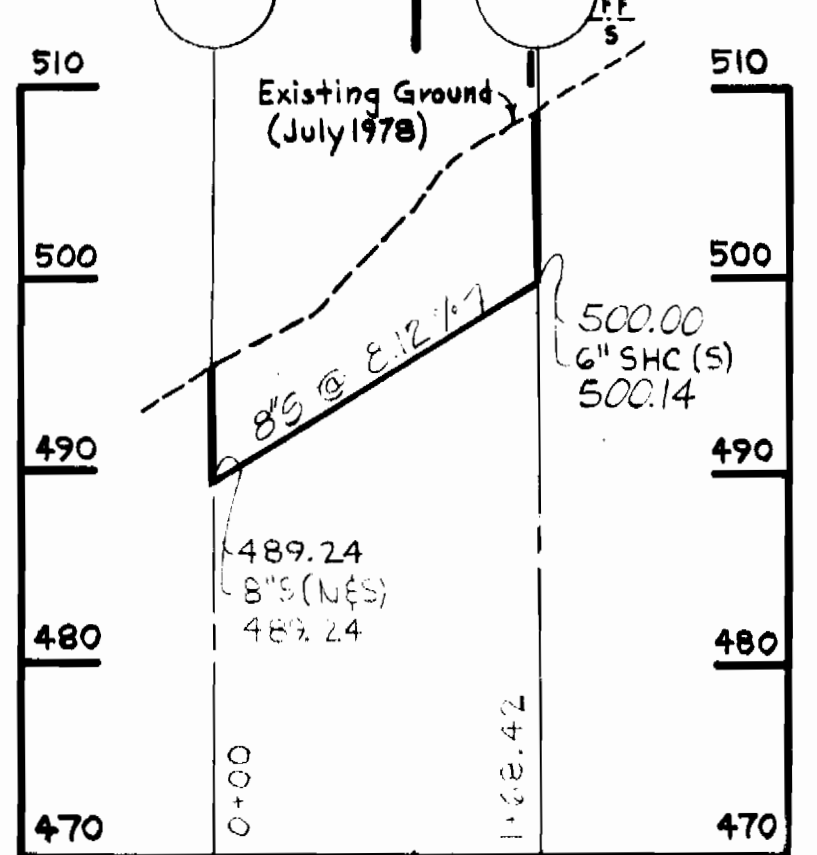
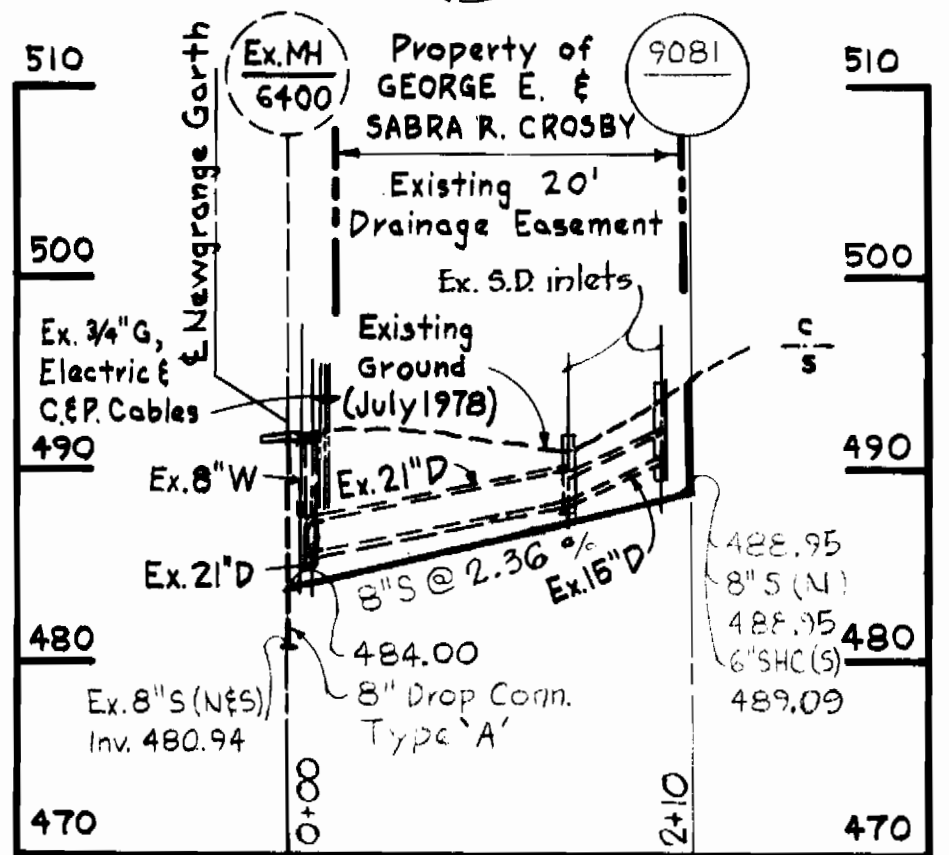
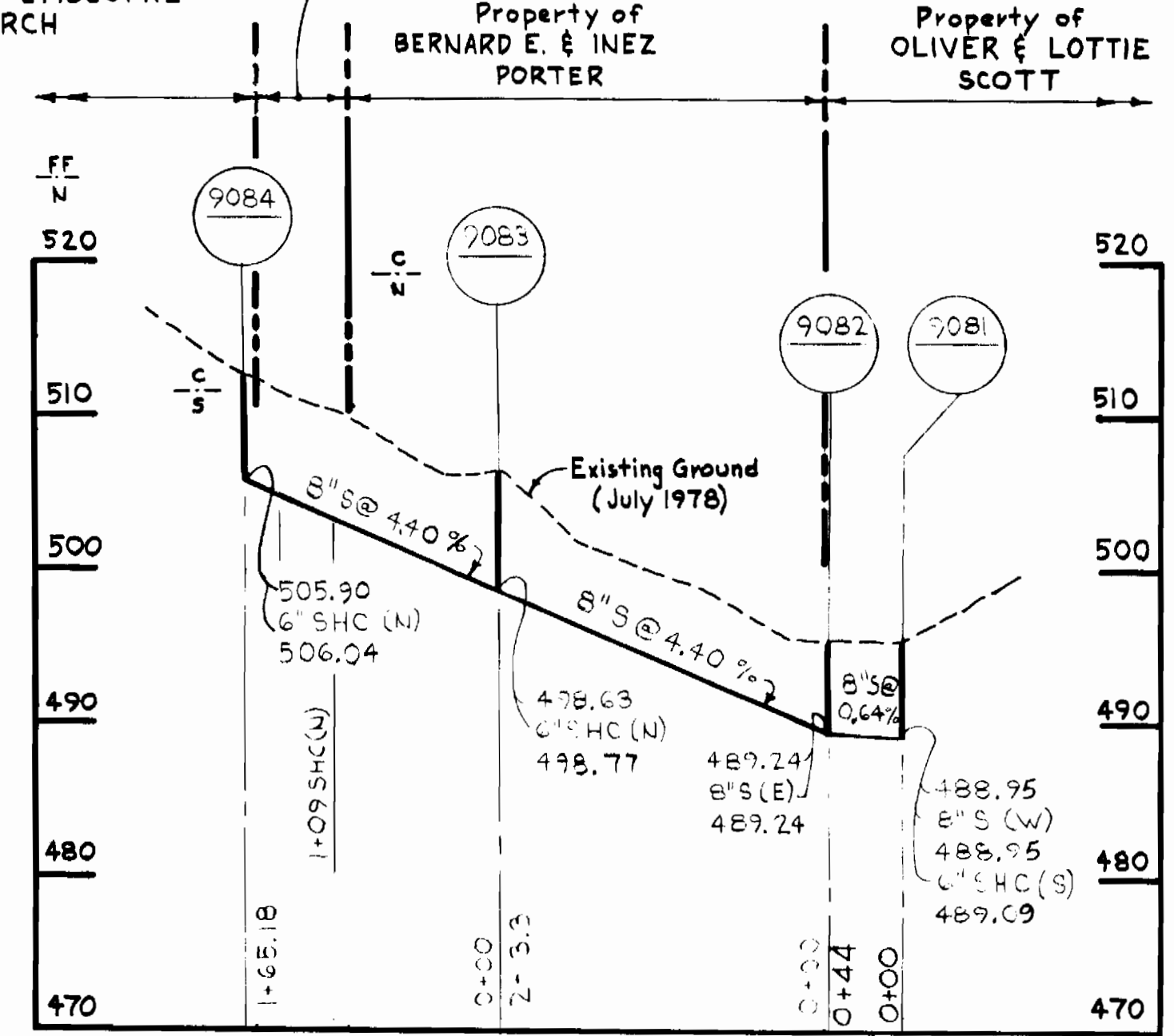
LOCATION MAP
 Scale: 1" = 400'

GENERAL NOTES

1. Approximate location of existing mains are shown. The contractor shall take all necessary precautions to protect existing mains and services and maintain uninterrupted supply. Any damage incurred shall be repaired immediately.
2. All pipe elevations shown are invert elevations.
3. The contractor shall locate existing utilities a minimum of two weeks in advance of construction operations in vicinity of utilities.
4. The contractor shall notify the following utilities or agencies at least five days before starting work shown on these plans:
 Baltimore Gas and Electric Company - Underground Electric Distribution Engineering
 " Damage Control 231-5091
 " Underground Gas Distribution Engineering 231-5091
 Chesapeake and Potomac Telephone Company 393-3648
 Miss Utility 1-359-0100
5. For all standard details see standards bound in specifications.
6. All horizontal and vertical controls are based on Maryland State Datum.
7. Clear all utilities by a minimum of 6'.
8. All sewer mains shall be C.S.P.X., V.C.P.X., or A.C.P. Class 1800 unless otherwise noted.
9. All manholes shall be 2'-0" inside diameter.
10. The contractor shall provide a joint in all sewer mains within 2'-0" of exterior manhole walls.
11. The cost of bracing or otherwise securing utility poles shall be included in the price bid for excavation and backfill of sewer mains.



PLAN
 Scale: 1" = 50'

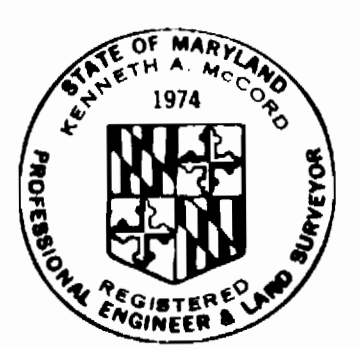


PROFILES

Scale: Hor. 1" = 100'
 Vert. 1" = 10'

CAUTION: 1/4" Gas main, Telephone and Electric cables exist within Newgrange Garth. Contractor shall verify location prior to construction.

QUANTITIES		
ITEM	BID	AS-BUILT MATERIAL/SUPPLIER
8" Sewer	805 L.F.	
Manholes	30 V.F.	



Kenneth J. McLeod

Jonestown Collector Sewer
 Phase 1 of 3
 Project 5-7-6080
 Contract No. 2807-5

WHITMAN, REQUARDT & ASSOCIATES ENGINEERS 1304 ST. PAUL ST. BALTIMORE, MARYLAND	DEPARTMENT OF PUBLIC WORKS HOWARD COUNTY, MARYLAND <i>Richard E. Sreudenberg</i> 9/6/78 DIRECTOR OF PUBLIC WORKS - DATE	CONTRACT NO. 2807-S PROJECT NOS. 7-6080	PLAN AND PROFILES OF SEWER MAINS	JONESTOWN COLLECTOR SEWER ELECTION DISTRICT — GUILFORD NO. 6	DRAWING NO. 1	SCALE AS SHOWN
					OF 1	