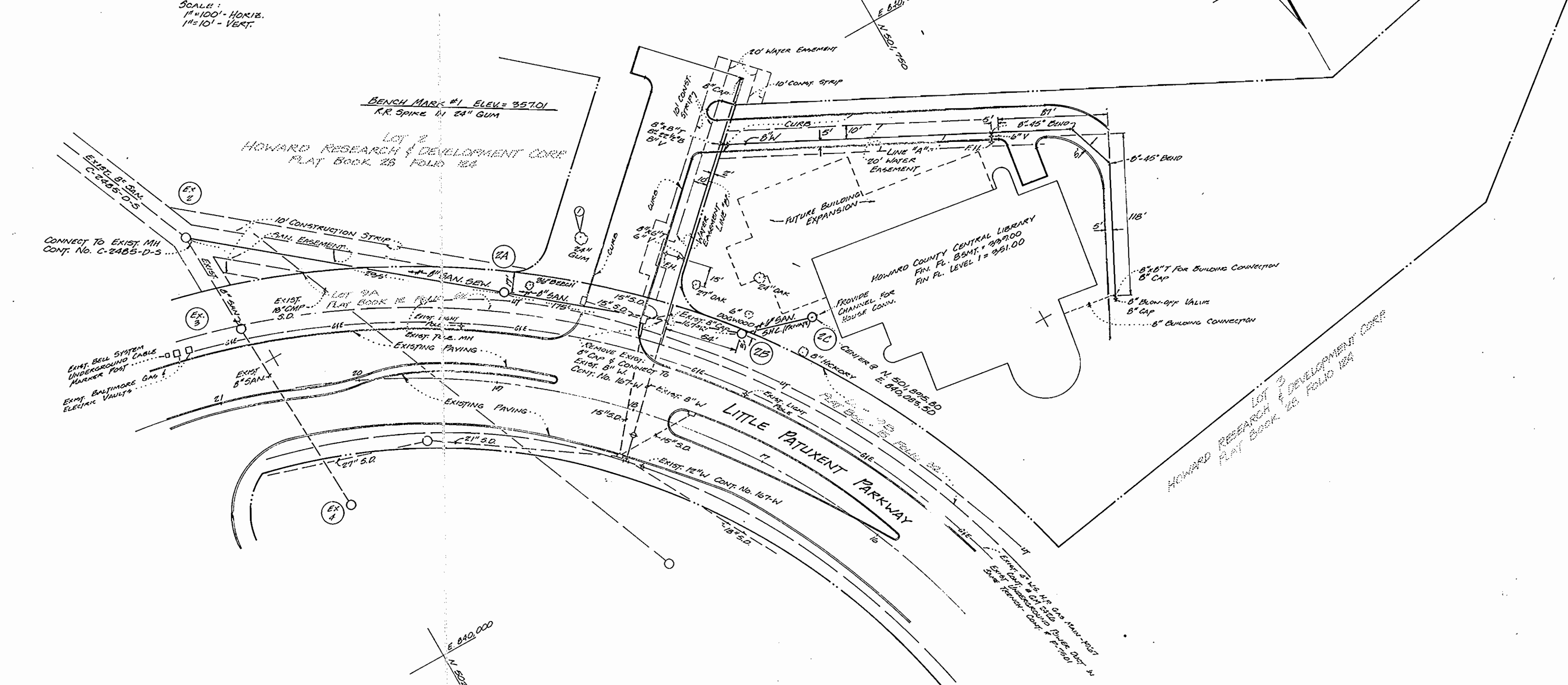


VICINITY MAP  
SCALE: 1" = 600'



**GENERAL NOTES**

1. ALL WATER MAINS TO BE C.I.P., D.I.P., A.C.P. UNLESS OTHERWISE SHOWN.
2. TOP OF ALL WATER MAINS TO HAVE A MINIMUM OF 3.50' COVER UNLESS OTHERWISE NOTED.
3. ALL VALVES SHALL BE STRAPPED TO TREES IN ACCORDANCE WITH STANDARD DETAILS.
4. BLOCK ALL FITTINGS WITH CONCRETE.
5. ALL SEWER MAINS SHALL BE O.S.P., V.C.P., OR A.C.P. CLASS 2000 UNLESS OTHERWISE NOTED.
6. THE CONTRACTOR SHALL PROVIDE A JOINT IN ALL SEWER MAINS WITHIN 2'-0" OF EXTERIOR MANHOLE WALL.
7. ALL MANHOLES SHALL BE 2'-0" INSIDE DIAMETER, UNLESS OTHERWISE NOTED.
8. APPROXIMATE LOCATIONS OF EXISTING MAINS ARE SHOWN. THE CONTRACTOR SHALL TAKE ALL NECESSARY PRECAUTIONS TO PROTECT EXISTING MAINS AND SERVICES AND MAINTAIN UNINTERRUPTED SUPPLY. ANY DAMAGE INCURRED SHALL BE REPAIRED IMMEDIATELY.
9. ALL HORIZONTAL CONTROLS ARE BASED ON MARYLAND STATE COORDINATES.
10. ALL VERTICAL CONTROLS ARE BASED ON U.S.G.S. DATUM.
11. ALL PIPE ELEVATIONS SHOWN ARE INVERT ELEVATIONS.
12. CLEAR ALL UTILITIES BY A MINIMUM OF 6', CLEAR ALL POLES BY 2'-0" MIN. OR TURNED AS REQUIRED.
13. CONTRACTOR SHALL LOCATE EXISTING UTILITIES IN ADVANCE OF CONSTRUCTION OPERATIONS IN THE VICINITY OF PROPOSED UTILITIES.
14. CONTRACTOR SHALL NOTIFY THE FOLLOWING UTILITIES OR AGENCIES AT LEAST 5 DAYS BEFORE STARTING WORK SHOWN ON THESE PLANS:  
STATE HIGHWAY ADMINISTRATION - 531-6533.  
BALTIMORE GAS & ELECTRIC COMPANY - UNDERGROUND ELECTRIC DISTRIBUTION; ENGINEERING "DAMAGE CONTROL" - 234-9291.  
BALTIMORE GAS & ELECTRIC COMPANY - UNDERGROUND GAS DISTRIBUTION; ENGINEERING - 559-0100.  
C&P TELEPHONE COMPANY - 725-0073.  
AT&T: CABLE LOCATION DIVISION - 301-393-3523.  
COLONIAL PIPELINE COMPANY - 781-4091.
15. TREES TO BE PROTECTED FROM DAMAGE TO MAXIMUM EXTENT. TREES LOCATED WITHIN THE CONSTRUCTION STRIP ARE NOT TO BE REMOVED OR DAMAGED BY THE CONTRACTOR.
16. CONTRACTOR SHALL REMOVE TREES, STUMPS AND ROOTS ALONG LINE OF EXCAVATION AS DIRECTED BY ENGINEER.

*Earl C. DeGeorge*  
 STATE OF MARYLAND  
 No. 3609  
 REGISTERED PROFESSIONAL ENGINEER

REVISED 11 OCT 1979 - ADD DEEP CONN. @ MIN. 2', DEEP 8" SANI. LINE  
 REVISED 30 JULY 1979 - ADD SANI. MANHOLE @ 22' SHIF. LINE  
 REVISED 6 MAR, 1978 - 8" LINE TO BUILDING CONNECTION  
 REVISED 20 DEC, 1978 - 8" OF WATER MAIN  
 REVISED 30 AUG, 1978 - HOWARD COUNTY LIBRARY  
 C-2802-D-N13

<b>VVKR</b> PARTNERSHIP 720 NORTH SAINT ASAPH STREET ALEXANDRIA, VIRGINIA, 22314 TEL. 703-349-3200	DEPARTMENT OF PUBLIC WORKS HOWARD COUNTY, MARYLAND Richard E. Brudenburgh 9/14/78 DIRECTOR OF PUBLIC WORKS DATE	CONTRACT NO. 2802-D-W.B.S. W.D. Albert 9-11-78 CHIEF BUREAU OF WATER AND SEWER	PLAN AND PROFILE OF WATER AND SEWER TOWN CENTER, SEC. 1, AREA 3, LOT 1 HOWARD COUNTY CENTRAL LIBRARY ELECTION DISTRICT #5	DRAWING NO. C-1A OF 1	SCALE 1" = 50'
				370-31	