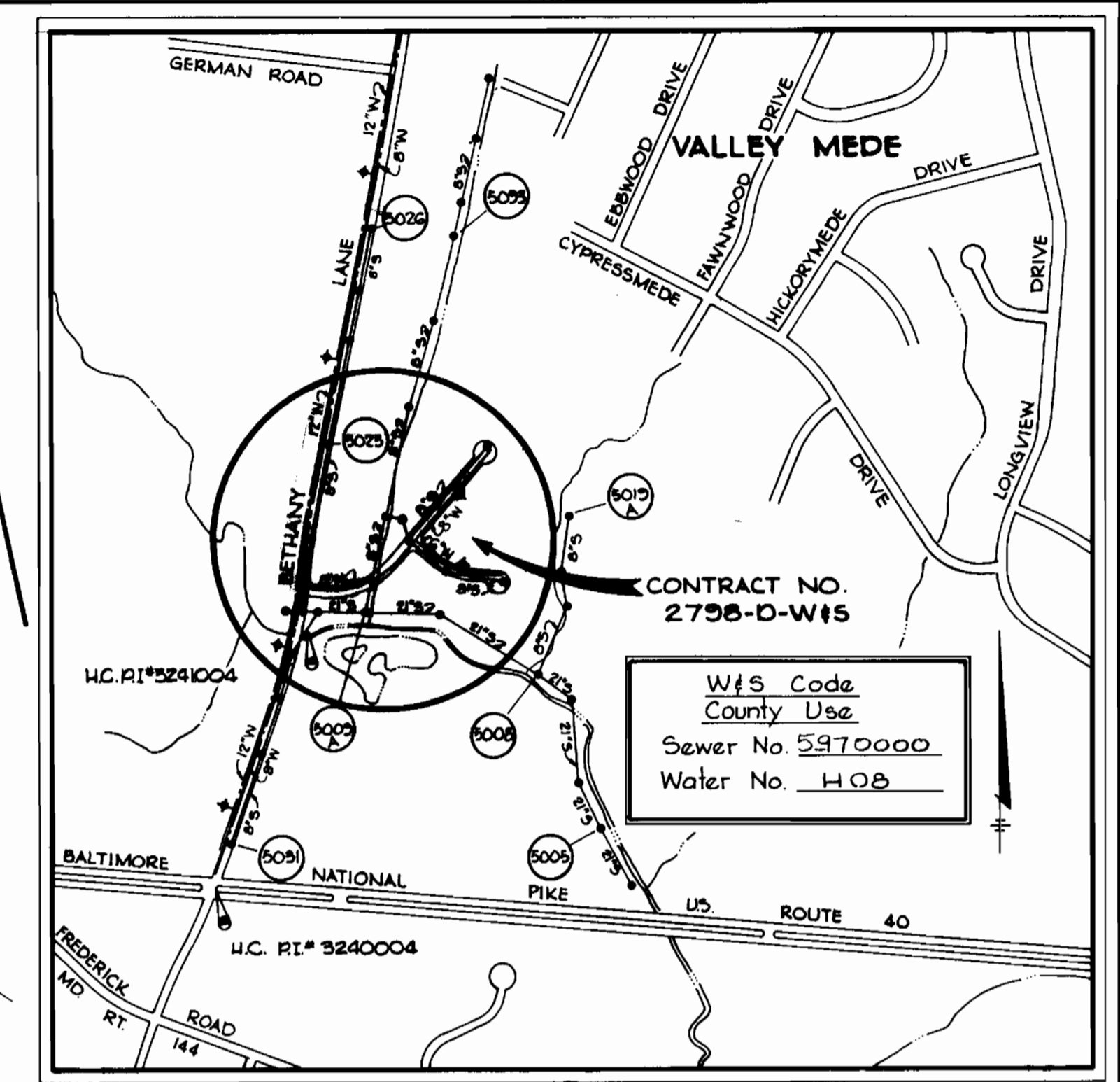
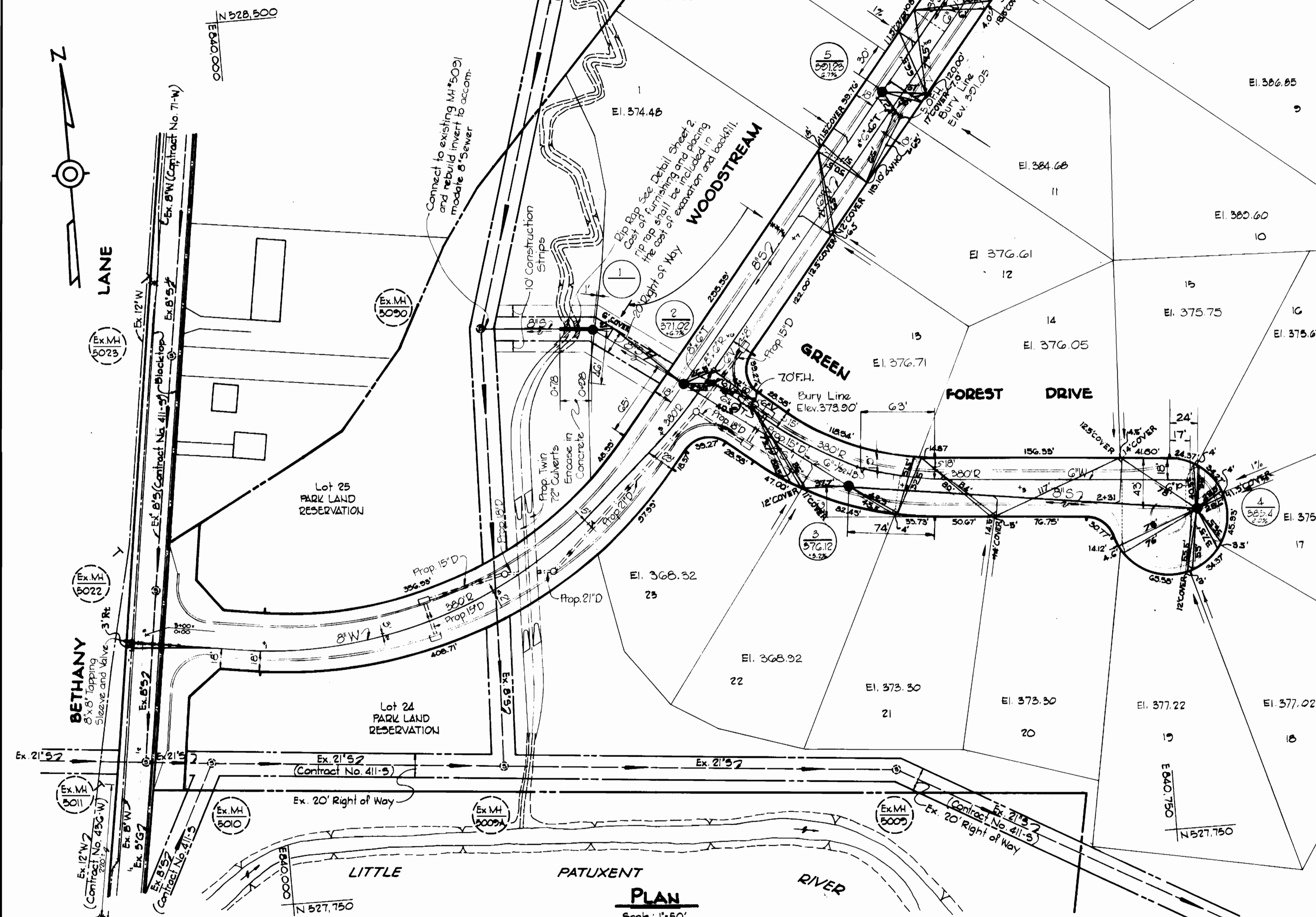


HC. PI. #3240004 Elev. 406.551
 3/4" rebar at surface in macadam shoulder at edge of concrete 1' North of joint where paving changes @ intersection of Rt. 40 & Bethany Lane.

HC. PI. #3241004 Elev. 352.785
 3/4" rebar 0.5' below surface 5' East of Northeast corner of Bridge of Bethany Lane over creek that enters Enchanted Forest.

Note:
 Elevations shown on each lot indicate the minimum basement floor elevation for said lot that can be gravity served by 8" sanitary line to be constructed under this contract.



VICINITY MAP
 Scale: 1"=600'

GENERAL NOTES

1. Approximate location of existing mains are shown. The contractor shall take all necessary precautions to protect existing services and maintain uninterrupted supply. Any damage incurred shall be repaired immediately.
2. All pipe elevations shown are invert elevations.
3. All water mains to be C.I.P., D.I.P. and A.C.P. unless otherwise noted.
4. The contractor shall locate existing utilities a minimum of two weeks in advance of construction operations in vicinity of utilities.
5. All water house connections shall be for inside water setting.
6. For all standard details, see standards bound in specifications.
7. The contractor shall provide a joint in all sewer mains within 2'-0" of exterior manhole walls.
8. Soil around fire hydrants to be compacted in accordance with Section 5-15 of the Standard Specifications.
9. All horizontal and vertical controls are based on Maryland State datum.
10. Place regulation 'Men Working' and warning signs as required to comply with Maryland State Highway Administration Manual of Traffic Control for Highway Construction and Maintenance Operations.
11. All water mains to have a minimum of 3/4" cover unless otherwise noted.
12. Trees are to be protected from damage to maximum extent. Trees located within the construction strip are not to be removed or damaged by the contractor.
13. Clear all utilities by a minimum of 6 inches.
14. All fire hydrants shall be strapped to trees and shall be buttressed with concrete in accordance with standard details.
15. Contractor shall remove trees, stumps, and roots along line of excavation as directed by the Engineer. Payment for such removal shall be included in the unit price bid for excavation and backfill for water and sewer mains.
16. All sewers shall be V.C.P.X., C.C.P.X. or A.C.P. class 2400, unless otherwise noted.
17. All manholes shall be 4'-0" inside diameter unless otherwise noted.
18. Profile stations shall be adjusted as necessary to conform to plan dimensions.
19. Block all fittings with concrete. See Standards bound in Specifications.
20. Bury line elevations on fire hydrants shall be set to the elevations shown on drawings.
21. Cost of strapping hydrants and valves to trees shall be included in the unit prices bid for furnishing and laying water mains.
22. Contractor should notify the following utilities or agencies at least five (5) days before starting work shown on these plans.

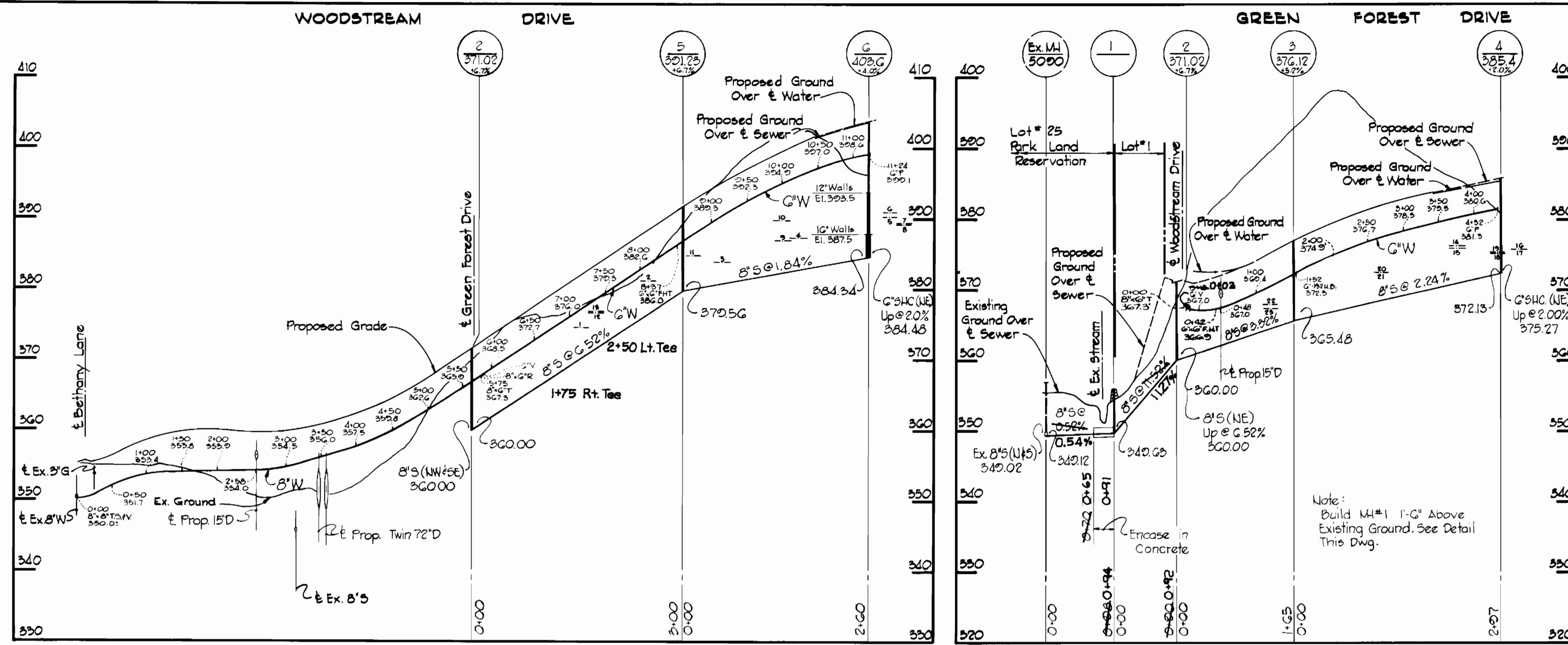
Chesapeake and Potomac Telephone Co. 785-0070
 Baltimore Gas & Electric Co. - Underground Electric Distribution Engr. - Damage Control 254-5001
 Baltimore Gas and Electric Co. - Underground Gas Distribution Engr. 550-0100
 Bell Telephone System 908-9040
 Long Distance Cable Division 325-3555

QUANTITIES			
ITEM	QUANTITY		SUPPLIER
	BID	AS BUILT	
8" Sewer	1220		ACP
8" Water	560	560	D.I.P.
6" Water	1010	844	
Fire Hydrants	2		

Bethany Woods
 Contract No. 2798-D-W15



CENTURY ENGINEERING, INC. CONSULTING ENGINEERS - PLANNERS TOWSON, MARYLAND 21204	DEPARTMENT OF PUBLIC WORKS HOWARD COUNTY, MARYLAND Richard E. Gruendler 7/17/78 DIRECTOR OF PUBLIC WORKS DATE	CONTRACT NO. 2798-D-W15 PLAN OF WATER AND SEWER MAINS	BETHANY WOODS WATER AND SEWER EXTENSIONS ELECTION DISTRICT - ELLICOTT CITY NO. 2 DRAWING NO. 1 OF 2 SCALE AS SHOWN
--	--	---	--



PROFILES

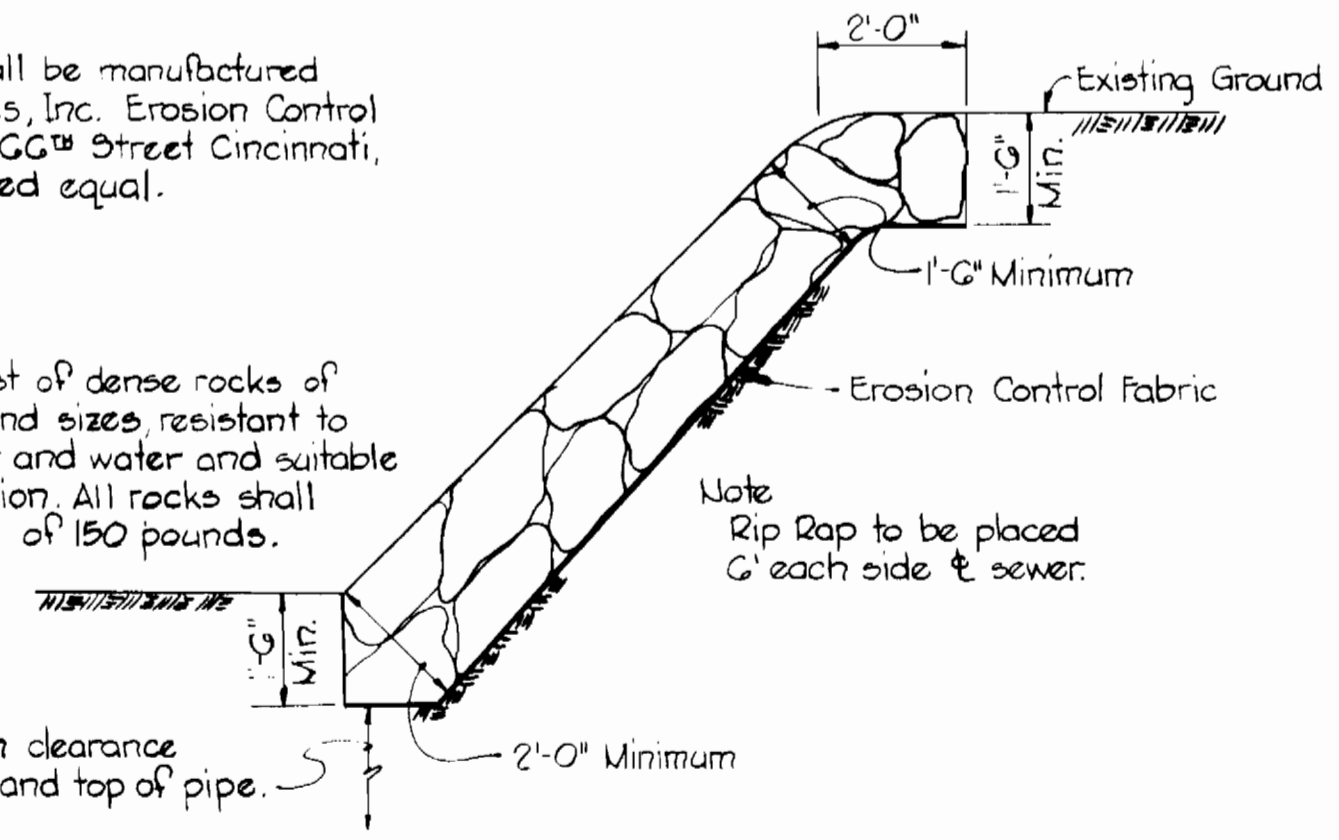
Scale: Hor: 1" = 100'
Vert: 1" = 10'

Note:

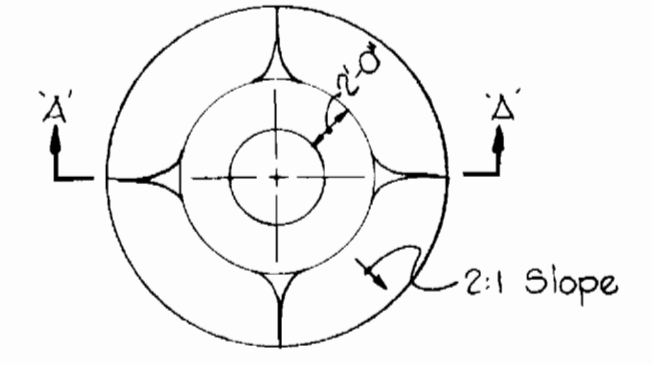
Poly Filter-X shall be manufactured by Carthage Mills, Inc. Erosion Control Division, 124 W. GGth Street Cincinnati, Ohio or approved equal.

Rip Rap to consist of dense rocks of random shapes and sizes resistant to the action of air and water and suitable for bank protection. All rocks shall weigh a minimum of 150 pounds.

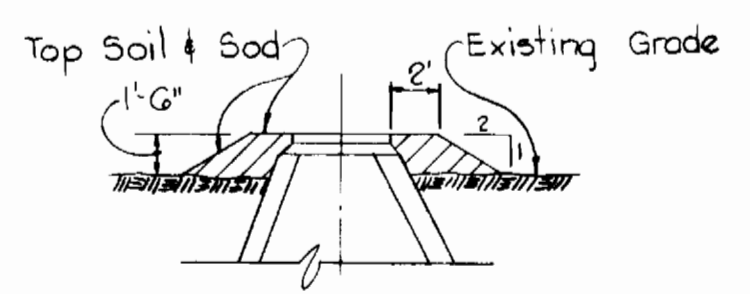
Maintain 1" minimum clearance between Rip Rap and top of pipe.



RIP RAP DETAIL
No Scale



PLAN



SECTION 'A-A'

FILL AT MANHOLE #1
No Scale

Bethany Woods
Contract No. 2798-D-W43



CENTURY ENGINEERING, INC.
CONSULTING ENGINEERS - PLANNERS
TOWSON, MARYLAND 21204

DEPARTMENT OF PUBLIC WORKS
HOWARD COUNTY, MARYLAND
Richard E. Freudenberger 7/17/78 WOT/bent 7-17-78
DIRECTOR OF PUBLIC WORKS DATE CHIEF - BUREAU OF ENGINEERING DATE

CONTRACT NO. 2798-D-W43

PROFILES OF WATER AND SEWER MAINS

BETHANY WOODS WATER AND SEWER EXTENSIONS
ELECTION DISTRICT - ELLICOTT CITY NO.2

DRAWING NO. 2 OF 2 SCALE AS SHOWN