

W&S Code
County Use
Sewer No. 5750623
Water No. 509

VICINITY MAP
Scale: 1" = 600'

GENERAL NOTES

1. Approximate location of existing mains are shown. The contractor shall take all necessary precautions to protect existing services and maintain uninterrupted supply. Any damage incurred shall be repaired immediately.
2. All pipe elevations shown are invert elevations.
3. The contractor shall locate existing utilities a minimum of two weeks in advance of construction operations in vicinity of utilities.
4. For all standard details, see standards bound in specifications.
5. The contractor shall provide a joint in all sewer mains within 2'-0" of exterior manhole walls.
6. All horizontal and vertical controls are based on Maryland State datum.
7. All manholes shall be 4'-0" inside diameter unless otherwise noted.
8. All water mains to have a min. of 3 1/2' cover unless otherwise noted.
9. Block all fittings with concrete. See standards bound in specifications.
10. All fire hydrants shall be strapped to tees and shall be buttressed with concrete in accordance with standard details.
11. Clear all utilities by a minimum of 6 inches.
12. All sewers shall be V.C.P.X., C.S.P.X. or A.C.P. class 2400, unless otherwise noted.
13. Profile stations shall be adjusted as necessary to conform to plan dimensions.
14. Bury line elevations on fire hydrants shall be set to elevations shown on drawings.
15. Cost of strapping hydrants and valves to tees shall be included in the unit prices bid for furnishing and laying water mains.

T.B.M.#2 EL. 381.88'
P.K. NAILE STATION 0+04 @ LEISURE COURT CUL-DE-SAC

T.B.M.#4 EL. 369.88'
CUT ON CORNER OF INLET @ STA 4+27 Ex. DOWER DR. 23' RIGHT.

ITEM	QUANTITY		SUPPLIER
	BID	AS BUILT	
8" Sewer	1250 L.F.	1224 L.F.	
6" Water	880 L.F.	856 L.F.	
Fire Hyd.	2	2	

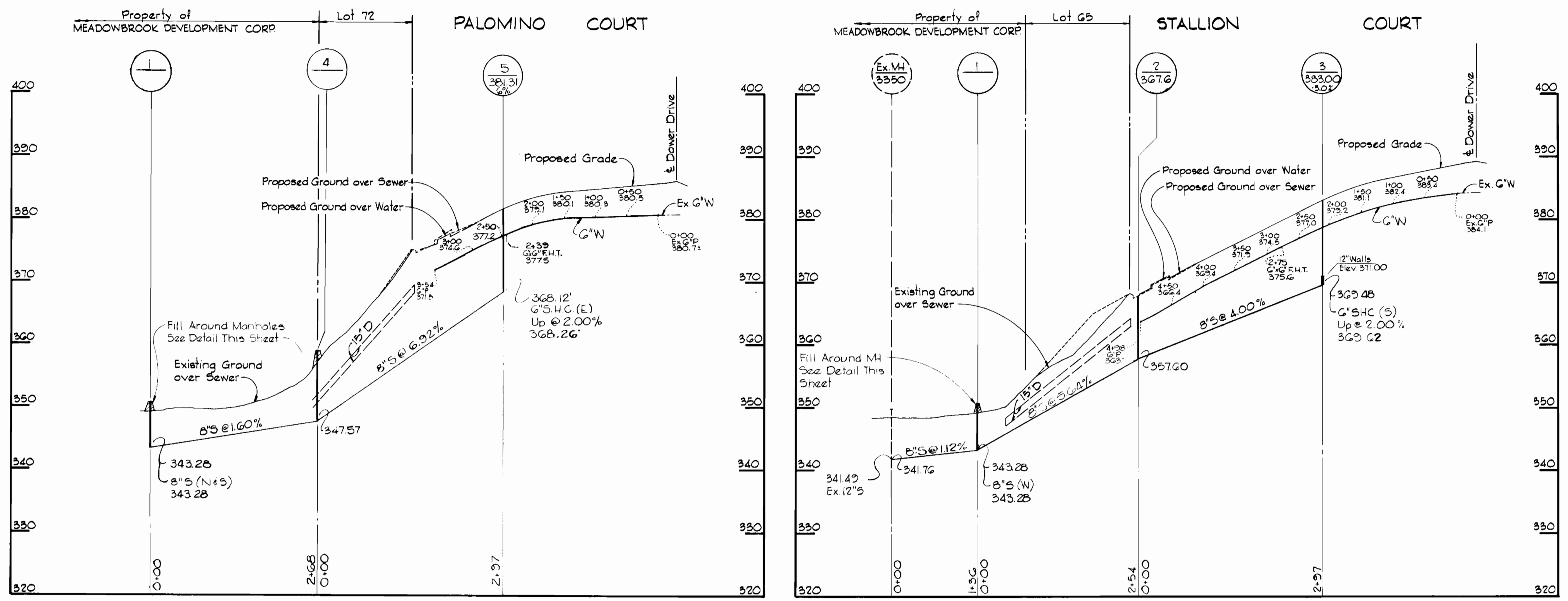


Note:
Elevations shown on each lot indicate the minimum basement floor elevation for lots that can be gravity served by Branch sanitary line to be constructed under this contract.

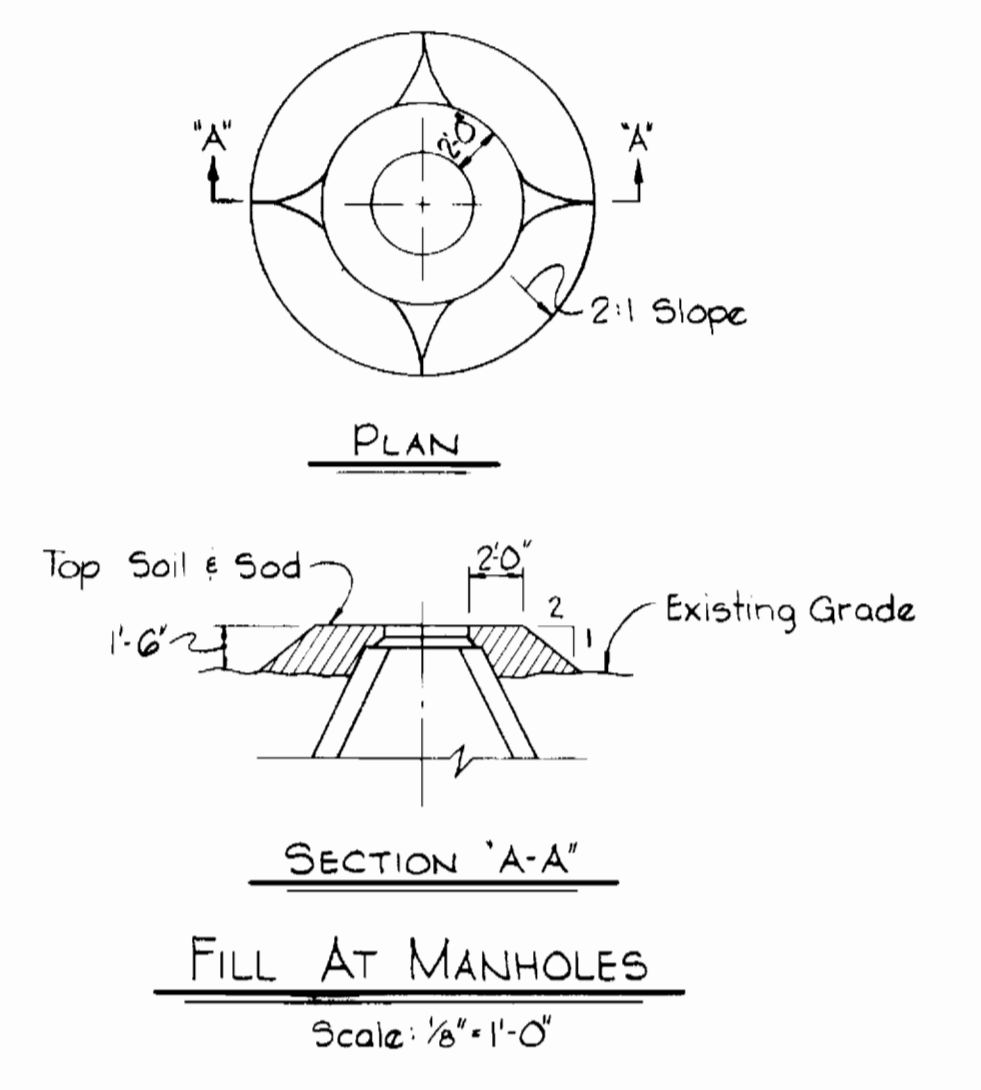
PLAN
Scale: 1" = 50'

CENTURY ENGINEERING, INC. CONSULTING ENGINEERS-PLANNERS TOWSON, MARYLAND 21204	DEPARTMENT OF PUBLIC WORKS HOWARD COUNTY, MARYLAND Richard E. Freudenberger 6/2/78 DIRECTOR OF PUBLIC WORKS DATE	CONTRACT NO. 2794-D-W&S W.O. Silbert 6-1-78 CHIEF - BUREAU OF ENGINEERING DATE	PLAN OF WATER AND SEWER MAINS	MEADOWBROOK - SECTION 2 ELECTION DISTRICT - ELLICOTT CITY NO. 2	DRAWING NO. 1 OF 2 SCALE AS SHOWN
---	--	---	--------------------------------------	---	--

Meadowbrook Section 2
Contract No: 2794-D-W&S



PROFILES
 Scale: Hor. = 1"=100'
 Ver. = 1"=10'



Jan 25, 1978

CENTURY ENGINEERING, INC.
 CONSULTING ENGINEERS · PLANNERS
 TOWSON, MARYLAND 21204

DEPARTMENT OF PUBLIC WORKS
 HOWARD COUNTY, MARYLAND
 Richard E. Freudenberger 6/2/78
 DIRECTOR OF PUBLIC WORKS DATE

CONTRACT NO. 2794-D-W&S

PROFILES OF
 WATER AND SEWER MAINS

MEADOWBROOK - SECTION 2
 ELECTION DISTRICT ELLICOTT CITY NO.2

DRAWING NO. 2 OF 2
 SCALE AS SHOWN

Meadowbrook
 Section 2
 Contract N#2704-D-W&S