

W.R.T.A. B.M.# 44 Elev. 350.16
 R.R. Spike in 30' Walnut
 120' Rt. of Ex. M# 1487
 at Fence Line.

Property of
 THE MILLER LAND COMPANY

Property of
 LUTHERAN HOSPITAL
 OF MARYLAND, INC.

Existing Grouted Rip-Rap
 See Note-Drawing No. 3.

Encase in Concrete
 Sta. 0+100 to Sta. 0+35.
 See Section at Sta. 0+23
 Drawing No. 3.

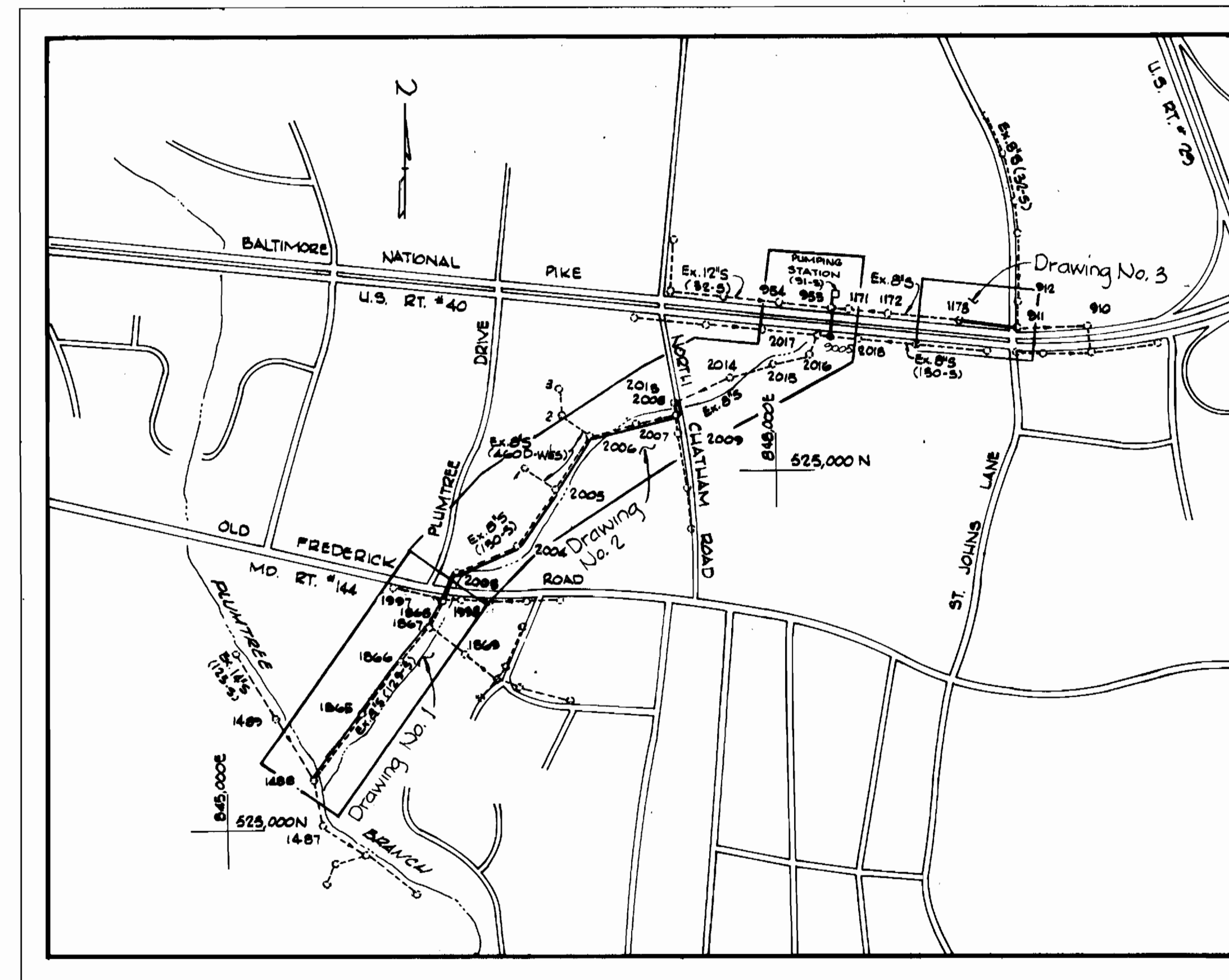
Connect 8" Parallel Sewer
 to MH 1488. Build
 Invert to suit.

LIMIT OF CONTRACT

W.R.T.A. B.M.# 44

Note: for 8" Parallel Sewer between
 MH No. 1865 and MH No. 2013 see
 Typical Section, Drawing No. 3.

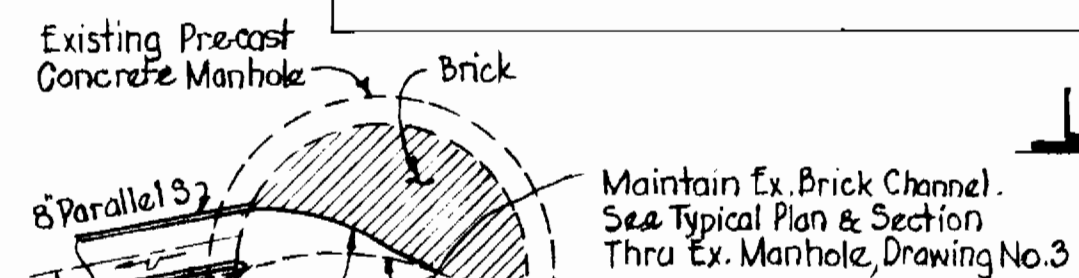
Match Line A-A See This Drawing.



LOCATION MAP
 Scale: 1"=600'

GENERAL NOTES

1. Approximate location of existing mains are shown. The Contractor shall take all necessary precautions to protect existing mains and services and maintain uninterrupted supply. Any damage incurred shall be repaired immediately.
2. All pipe elevations shown are invert elevations.
3. The Contractor shall locate existing utilities a minimum of two weeks in advance of construction operations in vicinity of utilities.
4. The Contractor shall notify the following utilities or agencies at least five days before starting work shown on these plans:
 State Highway Administration - 551-5555
 Baltimore Gas and Electric Company
 Underground Gas Distribution Engineering - 234-5671
 Underground Electric Distribution Engineering - 'Damage Control' - 234-5691.
 Chesapeake and Potomac Telephone Company - 593-3648
 Miss Utility - 1-555-0100.
5. All horizontal and vertical controls are based on Maryland State Datum.
6. For all standard details see standards bound in Specifications.
7. Clear all utilities by a minimum of 6'; clear all poles by 2'-0" minimum or tunnel as required.
8. All sewer mains shall be CSRX, VCRX, or ACR Class 2400 unless otherwise noted.
9. All manholes shall be 4'-0" inside diameter.
10. The Contractor shall provide a joint in all sewer mains within 1'-0" of exterior manhole walls.



Existing Precast Concrete Manhole
 Brick
 Maintain Ex. Brick Channel.
 See Typical Plan & Section
 Thru Ex. Manhole, Drawing No. 3

Ex. M# 2003
 Scale: 3/8"=1'-0"

Property of
 EDWARD C. WILSON and
 HAROLD E. EARP, JR.

NOT BUILT

W.R.T.A. B.M.# 51-U Elev. 361.32
 R.R. Spike in base of P
 Pole # 491, south side
 Old Frederick Road.

PLAN
 Scale: 1"=50'

QUANTITIES			
ITEM	BID	AS-BUILT	MATERIAL/SUPPLIER
10" Sewer	120 L.F.		
8" Sewer	3,410 L.F.		
Manholes	15 V.F.		

NOT BUILT

James H. Melrod
 Rt. 40 Diversion
 Project No. S-6-6082
 Contract No.

WHITMAN, REQUARDT & ASSOCIATES
 ENGINEERS
 1304 ST. PAUL ST.
 BALTIMORE, MARYLAND

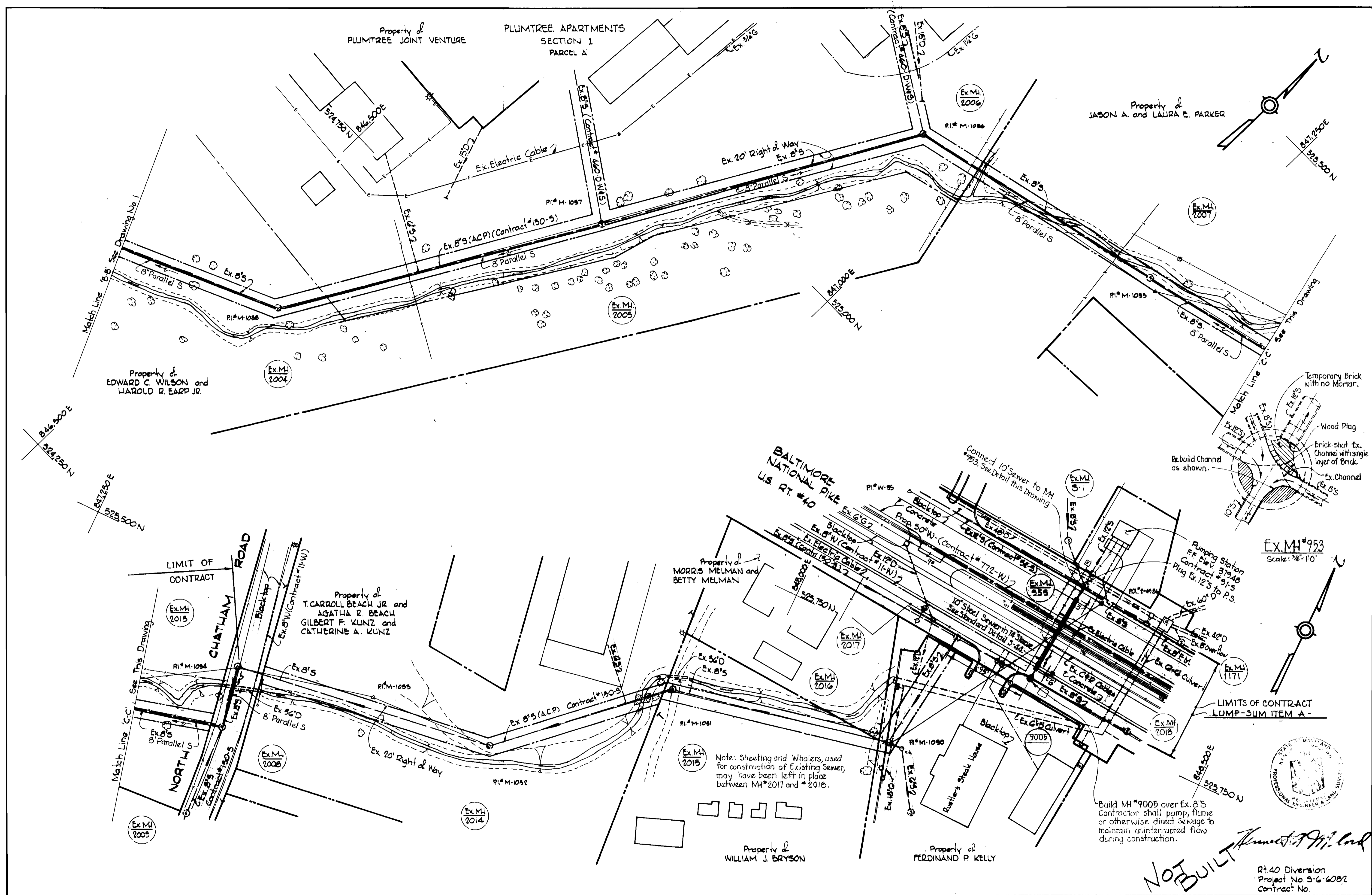
DEPARTMENT OF PUBLIC WORKS
 HOWARD COUNTY, MARYLAND
 DIRECTOR OF PUBLIC WORKS — DATE
 CHIEF-BUREAU OF ENGINEERING — DATE

CONTRACT NO. 787-S
 PROJECT NO. S-6-6082

PLAN OF
 SEWER MAINS

ELECTION DISTRICT
 ELLICOTT CITY NO. 2

DRAWING NO. 1 OF 4
 SCALE AS SHOWN



WHITMAN, REQUARDT & ASSOCIATES
ENGINEERS
1304 ST. PAUL ST.
BALTIMORE, MARYLAND

DEPARTMENT OF PUBLIC WORKS
HOWARD COUNTY, MARYLAND

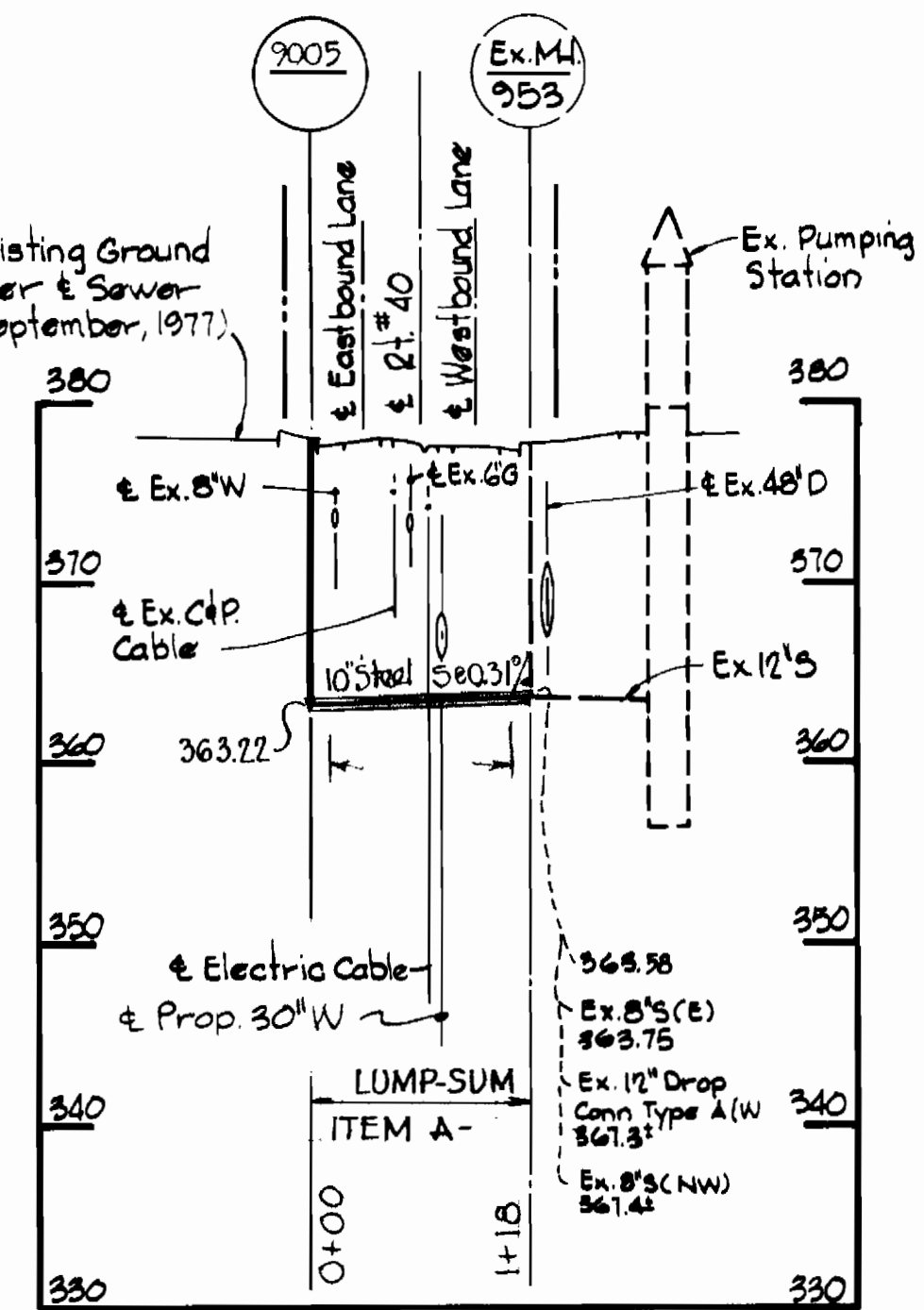
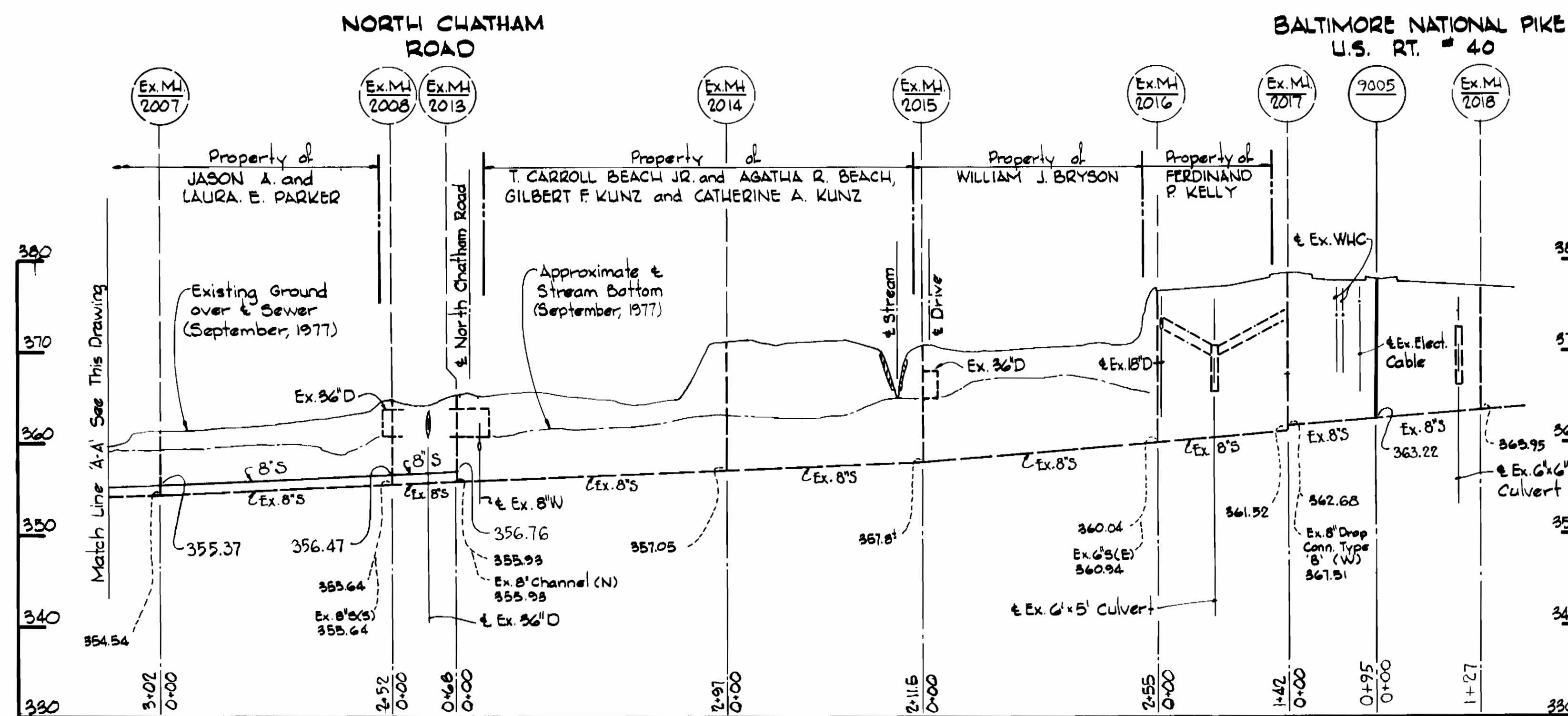
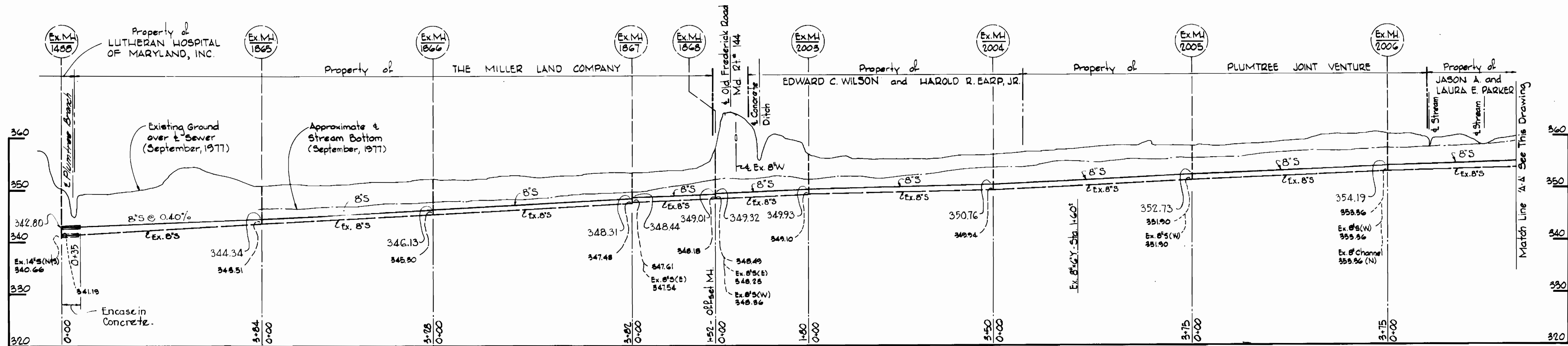
CONTRACT NO. 787-5
PROJECT NO. S-6-6082

PLAN OF
SEWER MAINS

ELECTION DISTRICT
ELLICOTT CITY NO. 2

DRAWING NO. 2 OF 4	SCALE 1"=50'	525-485 525-484 524-484 525-(1)
--------------------	--------------	--

NOT BUILT
Rt. 40 Diversion
Project No. S-6-6082
Contract No.



NOT BUILT



Rt 40 Diversion
Project No. S-6-6082
Contract No.

WHITMAN, REQUARDT & ASSOCIATES
ENGINEERS
1304 ST. PAUL ST.
BALTIMORE, MARYLAND

DEPARTMENT OF PUBLIC WORKS
HOWARD COUNTY, MARYLAND
DIRECTOR OF PUBLIC WORKS — DATE
CHIEF BUREAU OF ENGINEERING — DATE

CONTRACT NO. 787-S
PROJECT NO. S-6-6082

PROFILES OF
SEWER MAINS

ELECTION DISTRICT
ELLICOTT CITY NO. 2

DRAWING NO. 4
OF 4
SCALE H:V = 1:100
V:1"=10'