

VICINITY MAP
Scale: 1"=600'

GENERAL NOTES

1. Approximate locations of existing utilities are shown. The Contractor shall take all necessary precautions to protect the existing utilities and to maintain uninterrupted service. Any damage incurred due to the Contractor's operation shall be repaired immediately at the Contractor's expense.
2. All pipe elevations shown are invert elevations.
3. The Contractor shall locate existing utilities well in advance of construction activities in the vicinity of proposed utilities.
4. See standard details bound in specifications.
5. Clear all utilities by a minimum of 6 inches vertically. Clear all utility poles by 2'-0" minimum or tunnel as required. Any costs incurred to the Contractor for tunneling or bracing poles shall be included in the unit price bid for excavation.
6. The Contractor shall provide a pipe joint in all sewer mains within 2'-0" of exterior manhole walls.
7. All manholes shall be 4'-0" inside diameter, unless otherwise noted.
8. Buttress or anchor all water main fittings with concrete. All valves shall be strapped to tees in accordance with standard details.
9. All water mains to have a minimum of 3.5' cover unless otherwise noted.
10. All fire hydrants shall be strapped to the tee and shall be buttressed with concrete in accordance with standard details. Cost of strapping fire hydrants and valves to be included in the unit price bid for furnishing and installing fire hydrants. Soil around the fire hydrant to be compacted in accordance with Section 5-15 of the Howard County Standard Specifications.
11. Bury line elevations on fire hydrants shall be set to the elevations shown on the plan.
12. Horizontal and vertical control is based on the Maryland State Grid Coordinate System.
13. The Contractor shall notify the following utilities or agencies at least five days before starting work shown on these plans:
 Baltimore Gas and Electric Company - Underground Electric Distribution Engineering - "Damage control" - 234-5691
 Baltimore Gas and Electric Company - Underground Gas Distribution Engineering - 559-0100
 Chesapeake and Potomac Telephone Company 725-9976
 Miss Utility - 559-0100

QUANTITIES	
ITEM	ESTIMATED AS-BUILT
8" Sewer	1,482 L.F. 1485 L.F.
6" Sewer	835 L.F. 523 L.F.
Manholes	110 L.F. 102.5 L.F.
6" Water	1,320 L.F. 1316 L.F.
1" Water	250 L.F. 267 L.F.
3/4" Water	110 L.F. 246 L.F.
Fire Hyd.	3 Each 3 EA.

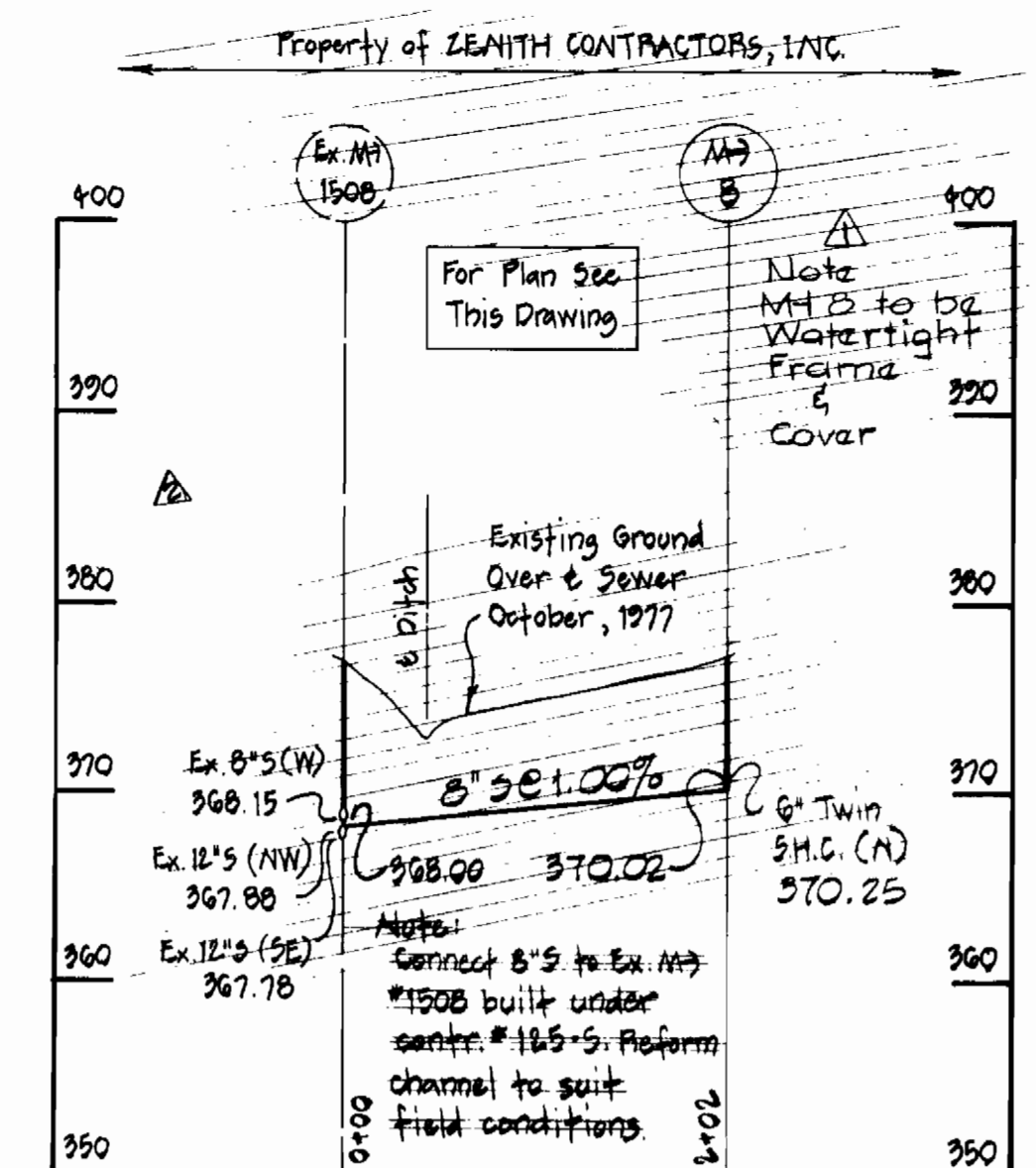
14. 375.0 Denotes elevation of 100 year flood level.

CONTRACT NO. 2783-D-W & S
VALLEY MEDE-SECTION 12
WATER & SEWER MAIN EXTENSIONS

11-30-78	D.H.C. on Lot 1 & 10
No	Date
	Revision

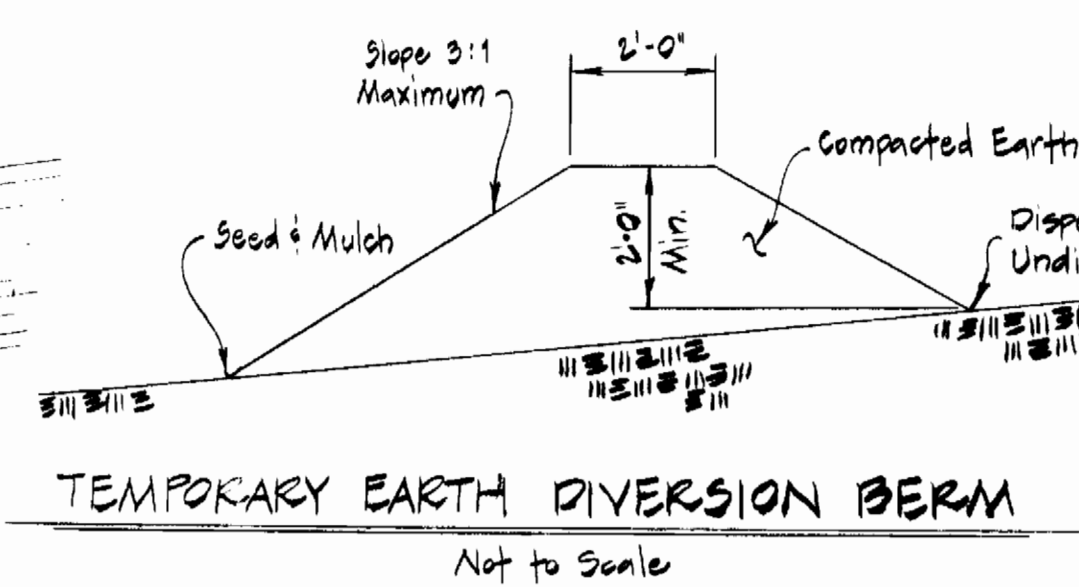
PURDUM & JESCHKE ENGINEERS 1023 N. CALVERT ST. BALTIMORE, MARYLAND	DEPARTMENT OF PUBLIC WORKS HOWARD COUNTY, MARYLAND 1-23-78 DATE	CONTRACT NO. 2783-D-W & S	PLAN OF WATER & SEWER MAINS	VALLEY MEDE - SECTION 12 ELECTION DISTRICT NO. 2 HOWARD COUNTY, MARYLAND	DRAWING NO. 1	SCALE 1"=50'	Designed: RDB Drafted: REC Checked: TAF
					OF 2	October 22, 1977	

BENCH MARKS
 D.M. #1 Elev. 384.06
 Iron Pipe Found 303 1/2 North-
 east of Ex. Manhole 1500

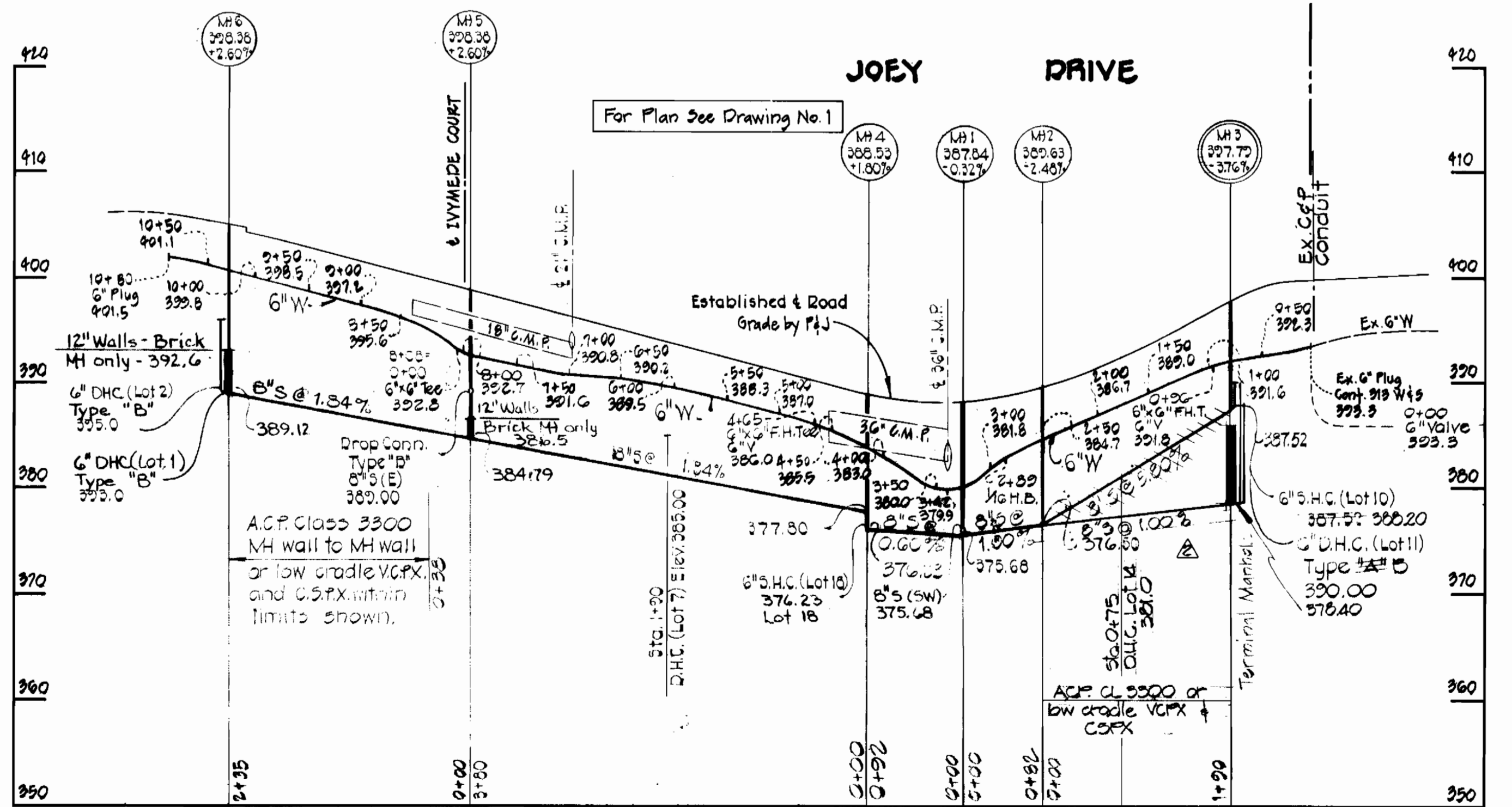
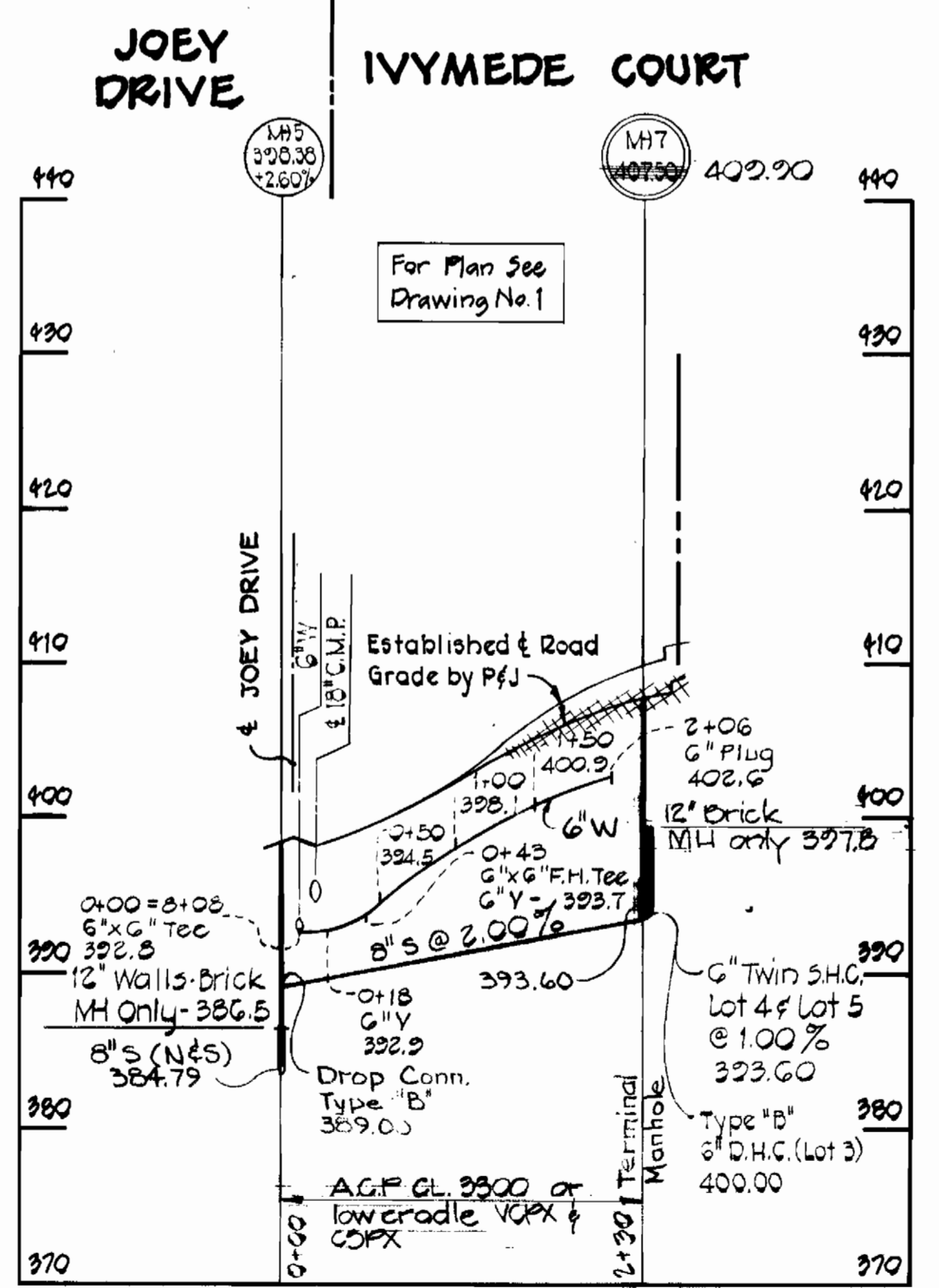
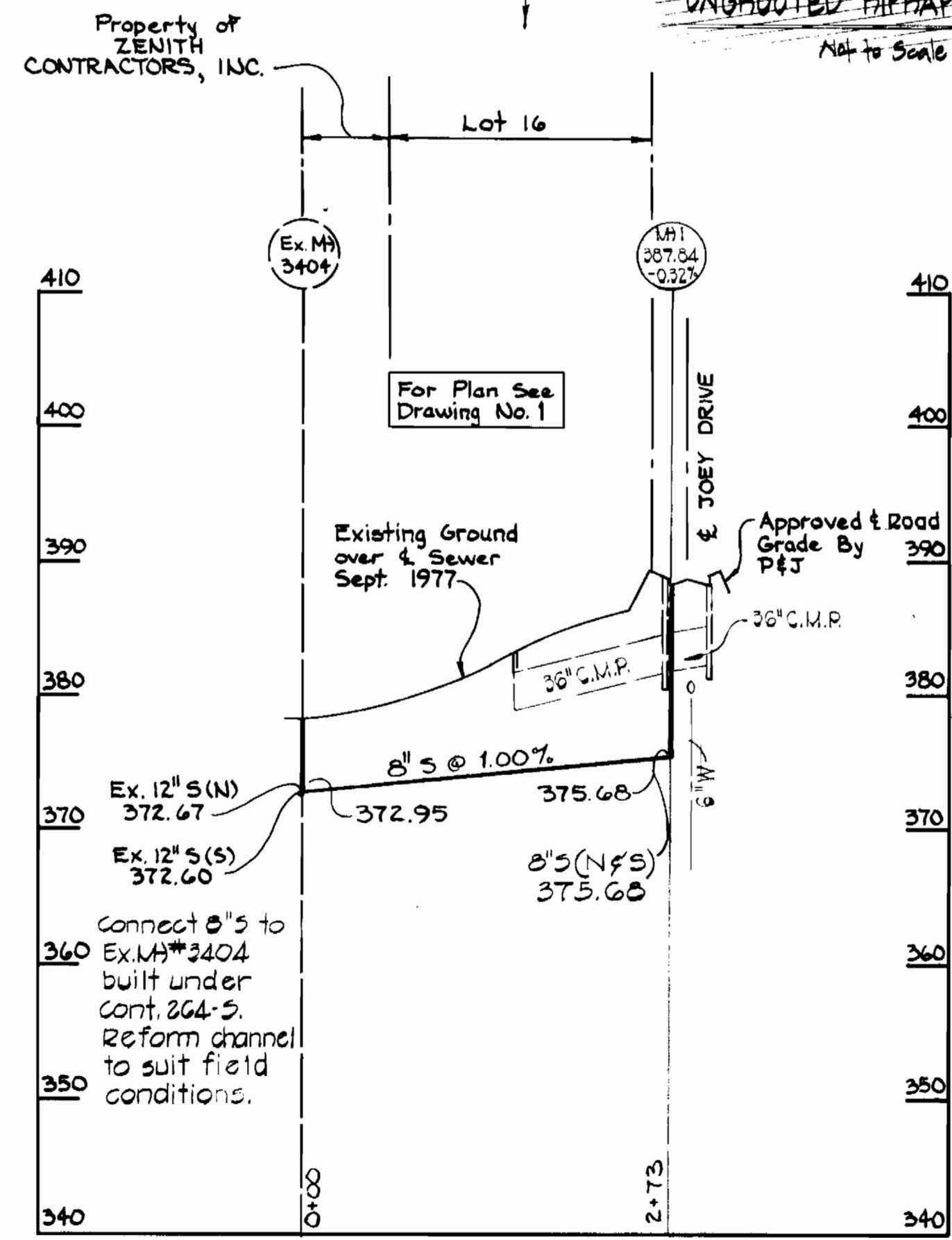
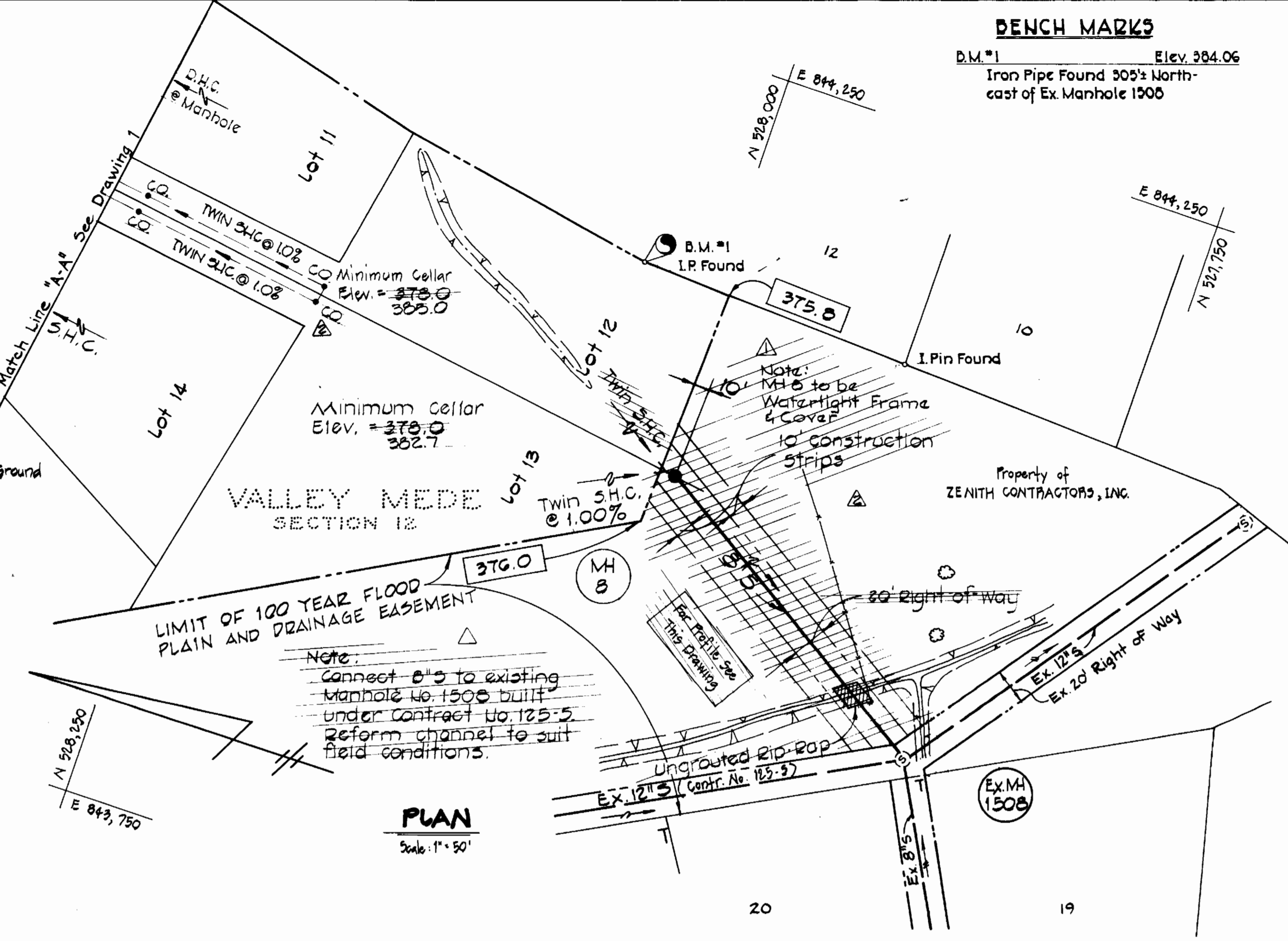
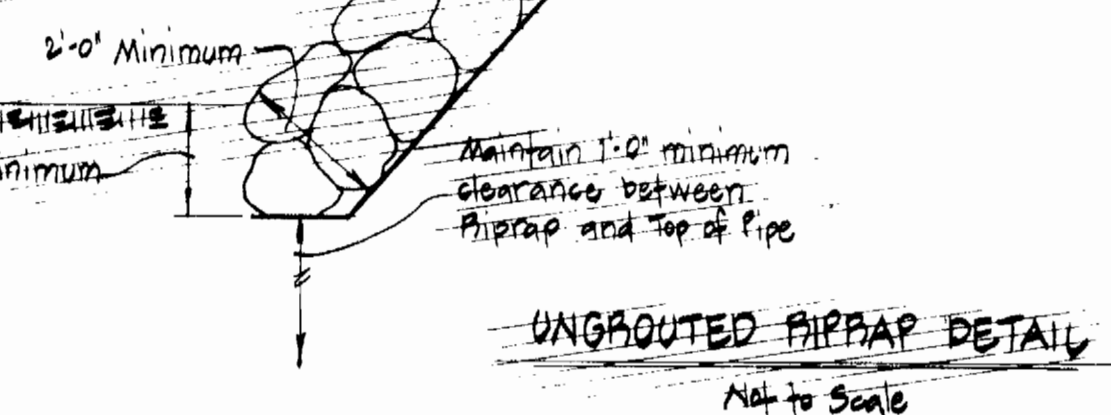


Piprap to consist of dense rocks of random shapes and sizes, resistant to the action of air and water and suitable for bank protection. All rocks shall weigh a minimum of 35 pounds.

Erosion Control Fabric shall be Poly-Filter X as manufactured by Cartridge Mills, Inc. or Formalineer No. 495 as manufactured by Staff Industries, Inc. or equal.



PROFILE
 Horiz. 1"=100'
 Vert. 1"=10'



PROFILES
 Horiz. 1"=100'
 Vert. 1"=10'

No.	Date	Revision
1	11-30-76	Revision made to profiles and
2	2-16-78	Add Note for M.H. 6 Plan and Profile

CONTRACT NO. 2783-D-W & S
 VALLEY MEDE - SECTION 12
 WATER & SEWER MAIN EXTENSIONS



PURDUM & JESCHKE
 ENGINEERS
 1023 N. CALVERT ST.
 BALTIMORE, MARYLAND

DEPARTMENT OF PUBLIC WORKS
 HOWARD COUNTY, MARYLAND
 1-23-78
 DIRECTOR OF PUBLIC WORKS DATE

CONTRACT NO. 2783-D-W & S

PLAN, PROFILES & DETAILS OF WATER & SEWER MAINS

VALLEY MEDE - SECTION 12
 ELECTION DISTRICT NO. 2
 HOWARD COUNTY, MARYLAND

DRAWING NO. 2 OF 2
SCALE AS SHOWN
 Designed: RDB
 Drafted: REC
 Checked: TAF