

# LAKESIDE

## VILLAGE OF OWEN BROWN

### SECTION I, AREA I

#### WATER AND SEWER EXTENSIONS

## CONTRACT NO. 2777-D-W&S

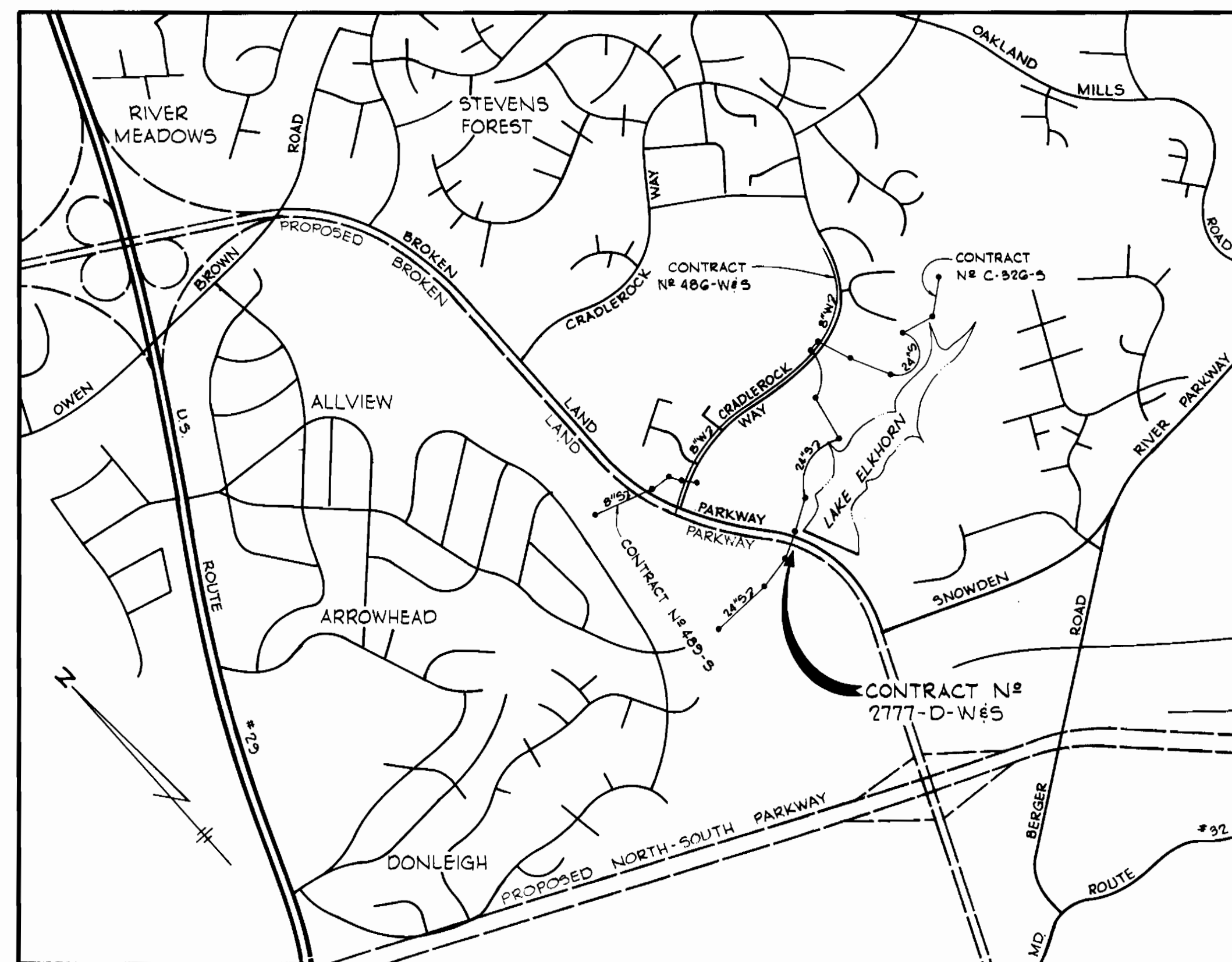
### DEPARTMENT OF PUBLIC WORKS

### HOWARD COUNTY, MARYLAND

**GENERAL NOTES**

1. APPROXIMATE LOCATION OF EXISTING MAINS ARE SHOWN. THE CONTRACTOR SHALL TAKE ALL NECESSARY PRECAUTIONS TO PROTECT EXISTING SERVICES AND MAINTAIN UNINTERRUPTED SUPPLY. ANY DAMAGE INCURRED SHALL BE REPAIRED IMMEDIATELY.
2. ALL PIPE ELEVATIONS SHOWN ARE INVERT ELEVATIONS.
3. THE CONTRACTOR SHALL LOCATE EXISTING UTILITIES A MINIMUM OF TWO WEEKS IN ADVANCE OF CONSTRUCTION OPERATIONS IN VICINITY OF UTILITIES.
4. FOR ALL STANDARD DETAILS, SEE STANDARDS BOUND IN SPECIFICATIONS.
5. THE CONTRACTOR SHALL PROVIDE A JOINT IN ALL SEWER MAINS WITHIN 2'-0" OF EXTERIOR MANHOLE WALLS.
6. ALL HORIZONTAL AND VERTICAL CONTROLS ARE BASED ON MARYLAND STATE DATUM.
7. ALL MANHOLES SHALL BE 4'-0" INSIDE DIAMETER UNLESS OTHERWISE NOTED.
8. ALL WATER MAINS TO HAVE A MIN. OF 3 1/2' COVER UNLESS OTHERWISE NOTED.
9. BLOCK ALL FITTINGS WITH CONCRETE. SEE STANDARDS BOUND IN SPECIFICATIONS.
10. BUILD ALL MANHOLES TO EXISTING GRADE UNLESS OTHERWISE NOTED.
11. ALL FIRE HYDRANTS SHALL BE STRAPPED TO TEES AND SHALL BE BUTTRESSED WITH CONCRETE IN ACCORDANCE WITH STANDARD DETAILS.
12. CLEAR ALL UTILITIES BY A MINIMUM OF 6 INCHES.
13. ALL SEWERS SHALL BE V.C.P.X., C.S.P.X. OR A.C.P. CLASS 2400, UNLESS OTHERWISE NOTED.
14. WHERE SEWER SERVICE CONNECTIONS ENTER MANHOLES, INVERTS SHALL BE CHANNELIZED TO ACCOMMODATE FLOW.
15. PROFILE STATIONS SHALL BE ADJUSTED AS NECESSARY TO CONFORM TO PLAN DIMENSIONS.
16. BURY LINE ELEVATIONS ON FIRE HYDRANTS SHALL BE SET TO ELEVATIONS SHOWN ON DRAWINGS.
17. COST OF STRAPPING HYDRANTS AND VALVES TO TEES SHALL BE INCLUDED IN THE UNIT PRICES BID FOR FURNISHING AND LAYING WATER MAINS.
18. ~~ALL DUCTILE IRON PIPE SHALL BE CLASS 50.~~ Deleted 2-27-78
19. CONTRACTOR TO NOTIFY THE FOLLOWING UTILITIES AT LEAST THREE DAYS BEFORE STARTING WORK ON THIS/ THESE DRAWINGS:
 

BELL TELEPHONE SYSTEM	393-3649
LONG DISTANCE CABLE DIVISION	393-3593 OR 3554
BALTIMORE GAS AND ELECTRIC COMPANY	533-8000 EXT. 6791



**LOCATION MAP**

Scale: 1"=1,000'

**BENCH MARKS**

- T.B.M.#1 Elev. 302.00  
 a-Cut and Painted on Flange Bolt Sta. - 0+51.5  
 Offset 15' Rt. Broken Staff
- T.B.M.#2 Elev. 308.84  
 a-Cut in Concrete Bench Support at Dam

WATER AND SEWER CODE  
FOR COUNTY USE

- SEWER:
1. Sewer connection to MH # 4432 - 5330500
  2. Sewer connection to MH # 4433 - 2330600
  3. Sewer connection to MH # 6021 - 5370000
- WATER ----- E 10

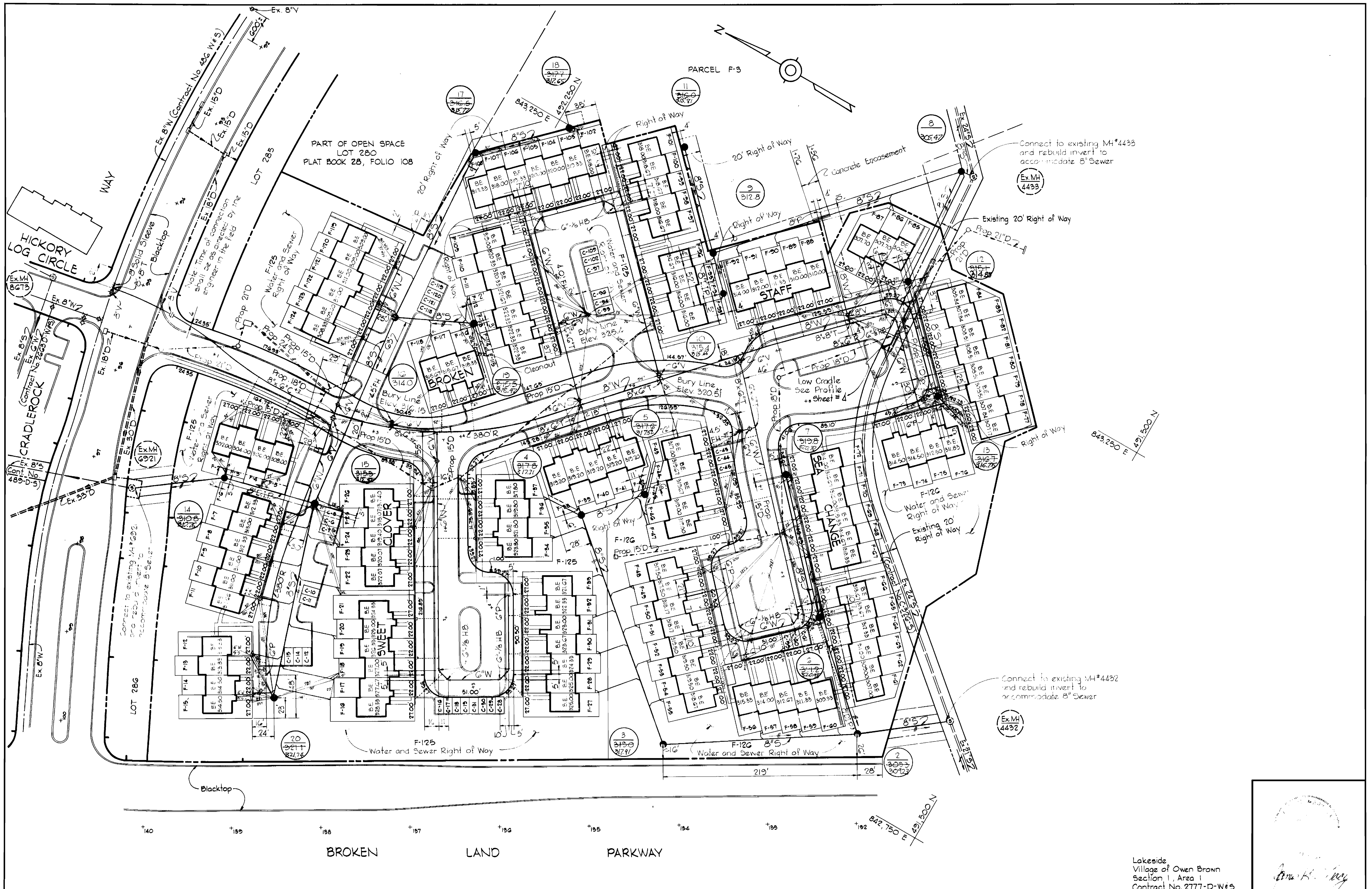
**QUANTITIES**

ITEM	QUANTITIES		SUPPLIER
	BID	AS BUILT	
8" Sewer	2500 LF	832	ACP
8" Water	385 LF	1,006	ACP
6" Water	2070 LF	1,782	ACP
Fire Hydrants	3	3	
8" D.I.P.	205 LF	280	

Lakeside  
 Village of Owen Brown  
 Section I, Area I  
 Contract No. 2777-D-W&S

*John F. Riddle*  
 9564 10/24/78

CENTURY ENGINEERING, INC. CONSULTING ENGINEERS-PLANNERS TOWSON, MARYLAND 21204	DEPARTMENT OF PUBLIC WORKS HOWARD COUNTY, MARYLAND <i>P. J. Regan</i> 1-24-78 DIRECTOR OF PUBLIC WORKS DATE	CONTRACT NO. 2777-D-W&S	TITLE SHEET	COLUMBIA VILLAGE OF OWEN BROWN ELECTION DISTRICT GUILFORD NO. 6	DRAWING NO. 1 OF 4 SCALE AS SHOWN
--	--	-------------------------	-------------	---	--------------------------------------



CENTURY ENGINEERING, INC.  
CONSULTING ENGINEERS - PLANNERS  
TOWSON, MARYLAND 21204

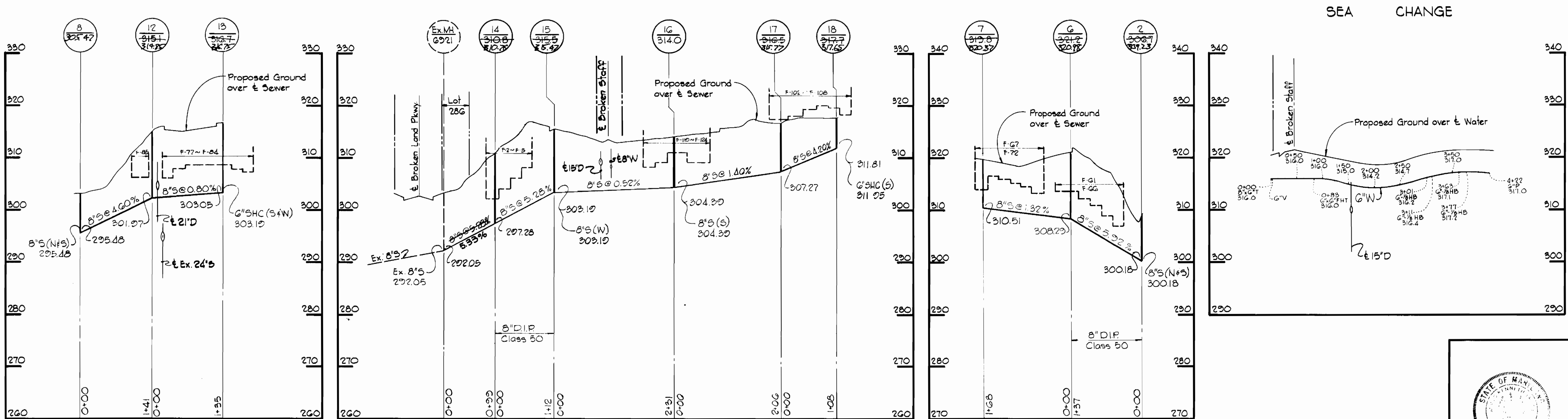
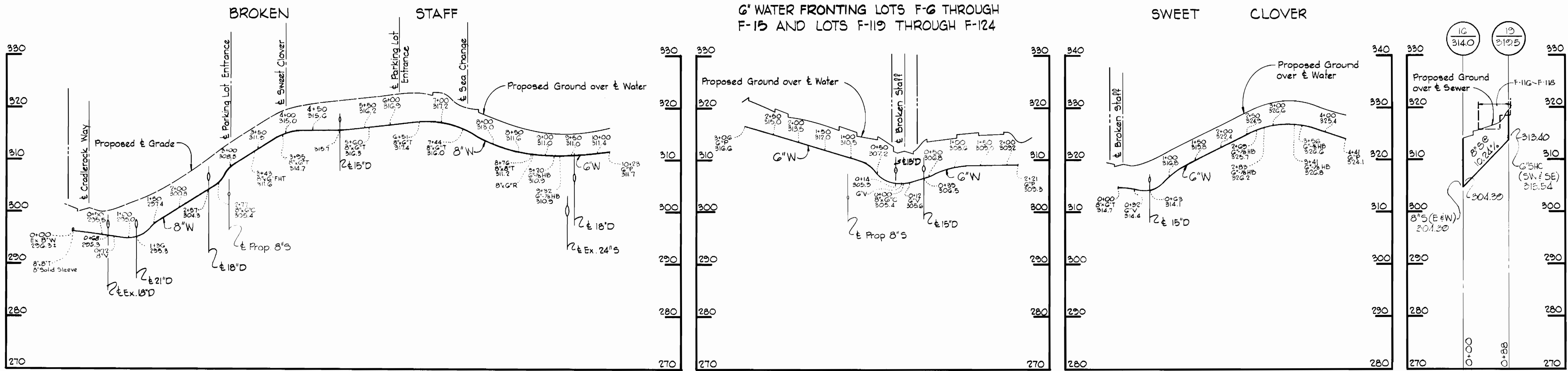
DEPARTMENT OF PUBLIC WORKS  
HOWARD COUNTY, MARYLAND  
*D.P. Regan Jr.* 1-24-78 *John L. Riddle, Jr.* 1/23/78  
DIRECTOR OF PUBLIC WORKS DATE CHIEF - BUREAU OF ENGINEERING DATE

CONTRACT NO. 2777-D-W8S

PLAN OF  
WATER AND SEWER MAINS

COLUMBIA  
VILLAGE OF OWEN BROWN  
ELECTION DISTRICT GUILFORD NO. 6

Lakeside  
Village of Owen Brown  
Section 1, Area 1  
Contract No. 2777-D-W#5  
*Ann H. Kelly*  
DRAWING NO. 2 OF 4 SCALE 1"=50'

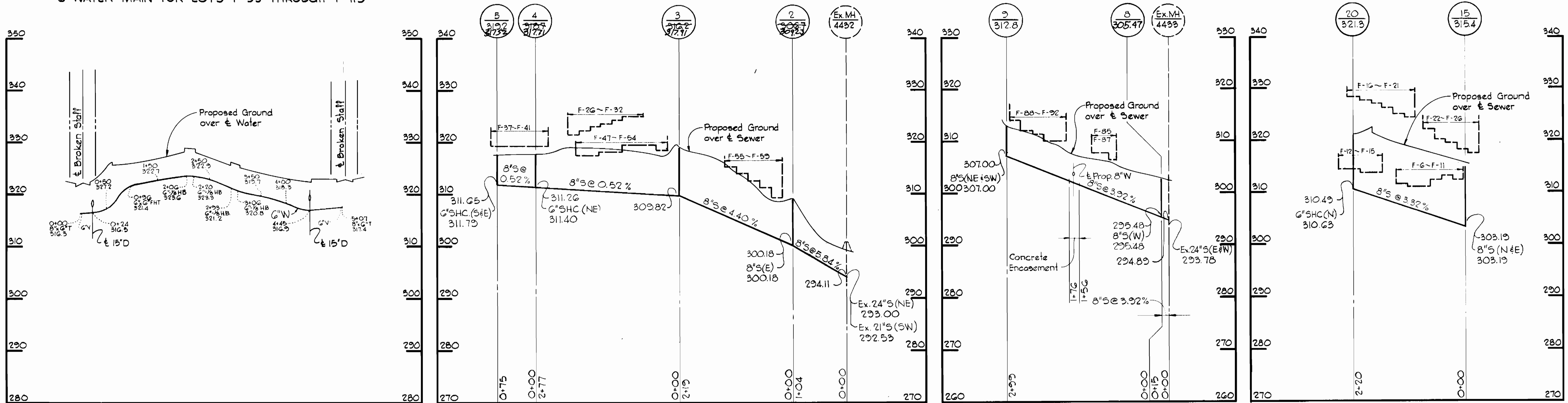


Lakeside  
 Village of Owen Brown  
 Section 1, Area 1  
 Contract No. 2777-D-W65

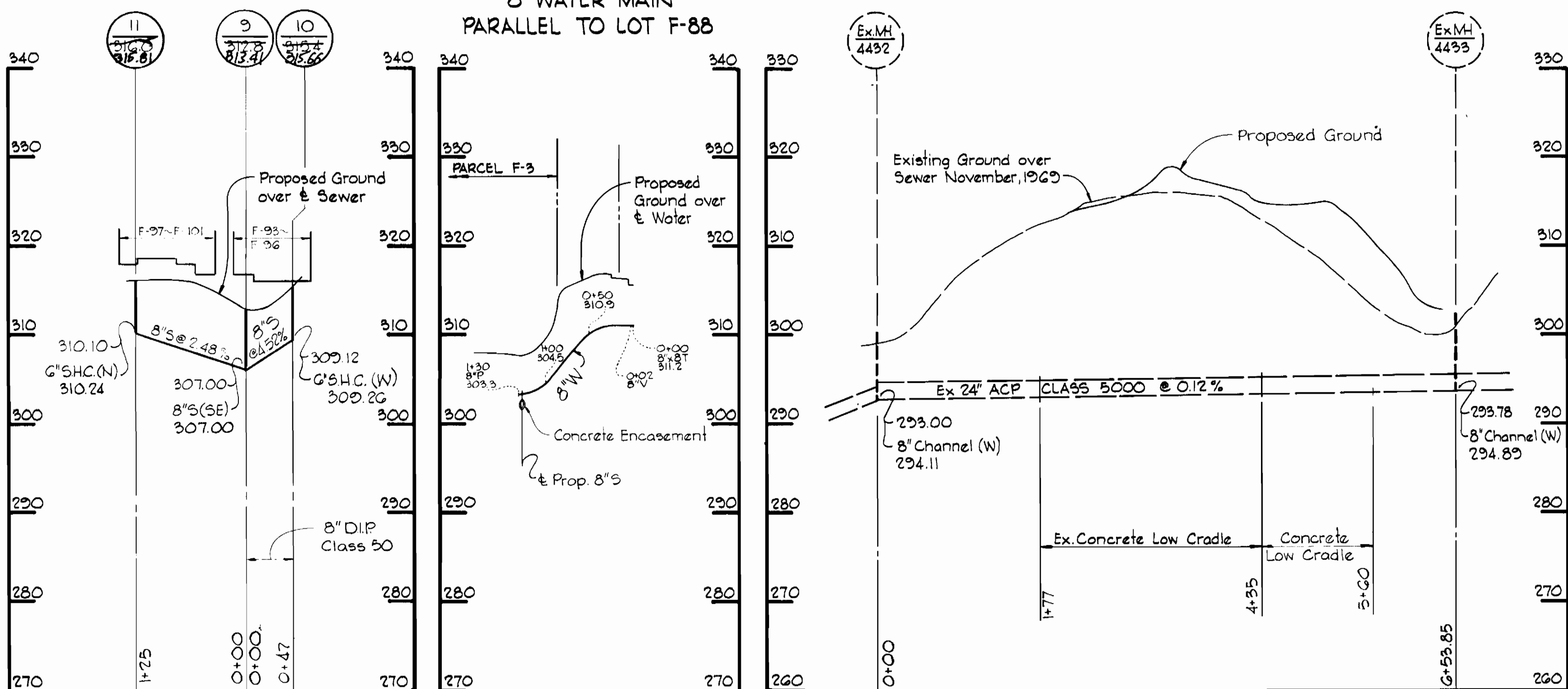
*Donna K. Gray*

CENTURY ENGINEERING, INC. CONSULTING ENGINEERS - PLANNERS TOWSON, MARYLAND 21204	DEPARTMENT OF PUBLIC WORKS HOWARD COUNTY, MARYLAND 1-24-78 DIRECTOR OF PUBLIC WORKS DATE	CONTRACT NO. 2777-D-W65 CHIEF - BUREAU OF ENGINEERING DATE	PROFILES OF WATER AND SEWER MAINS	COLUMBIA VILLAGE OF OWEN BROWN ELECTION DISTRICT GUILFORD NO. 6	DRAWING NO. 3 OF 4 SCALE H:1"=100' V:1"=10' JANUARY 10, 1978
--	---	---	--------------------------------------	---	--

6" WATER MAIN FOR LOTS F-93 THROUGH F-115



8" WATER MAIN PARALLEL TO LOT F-88



Lakeside  
Village of Owen Brown  
Section 1, Area 1  
Contract No. 2777-D-N&S

*J. M. Kelly*

<p>CENTURY ENGINEERING, INC. CONSULTING ENGINEERS - PLANNERS TOWSON, MARYLAND 21204</p>	<p>DEPARTMENT OF PUBLIC WORKS HOWARD COUNTY, MARYLAND 1-24-78 DIRECTOR OF PUBLIC WORKS</p>	<p>CONTRACT NO. 2777-D-W&amp;S</p>	<p>PROFILES OF WATER AND SEWER MAINS</p>	<p>COLUMBIA VILLAGE OF OWEN BROWN ELECTION DISTRICT GUILFORD NO. 6</p>	<p>DRAWING NO. 4 OF 4 SCALE H:1"=100' V:1"=10' JANUARY 9 1978</p>
---	--	------------------------------------	--	--	---