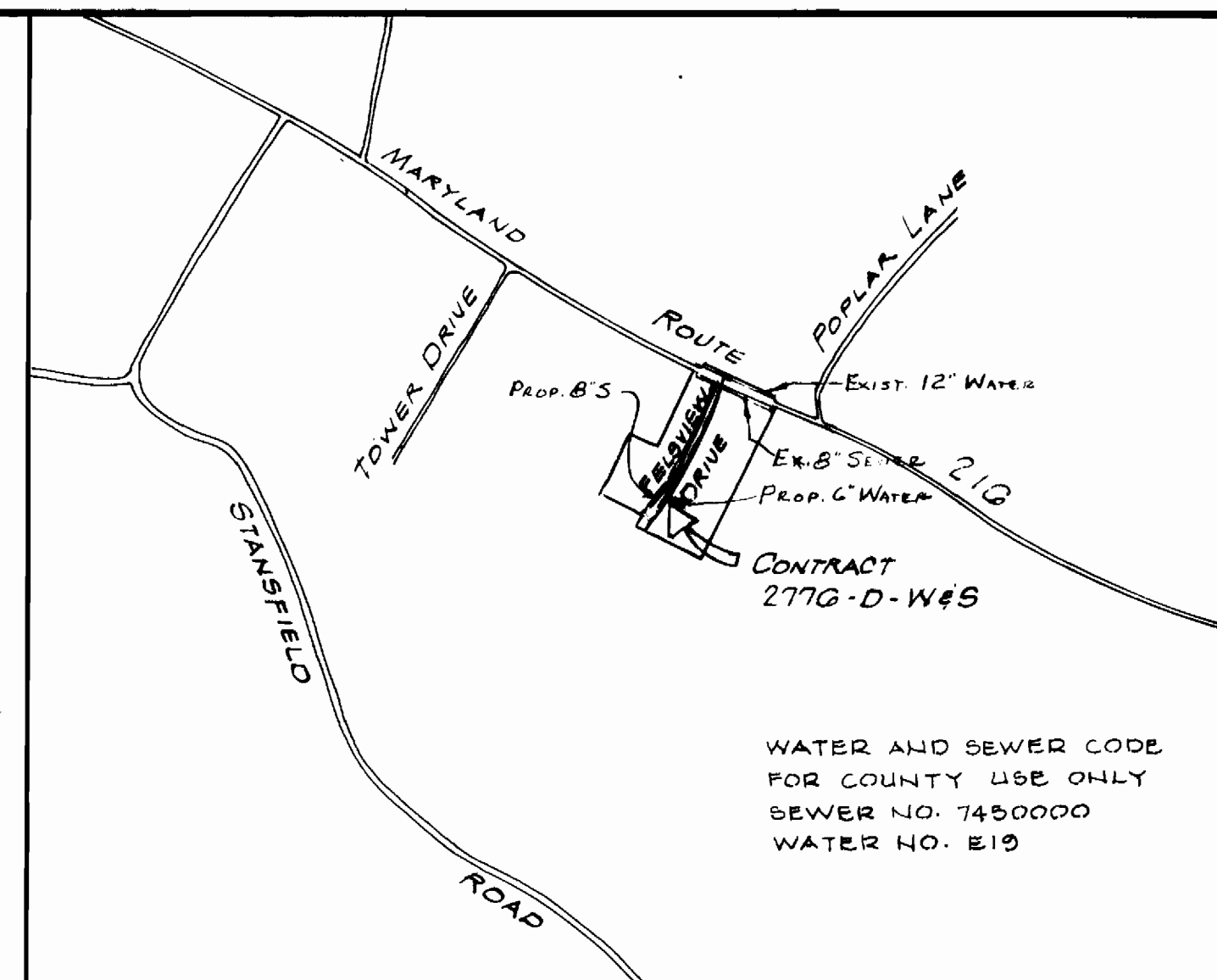
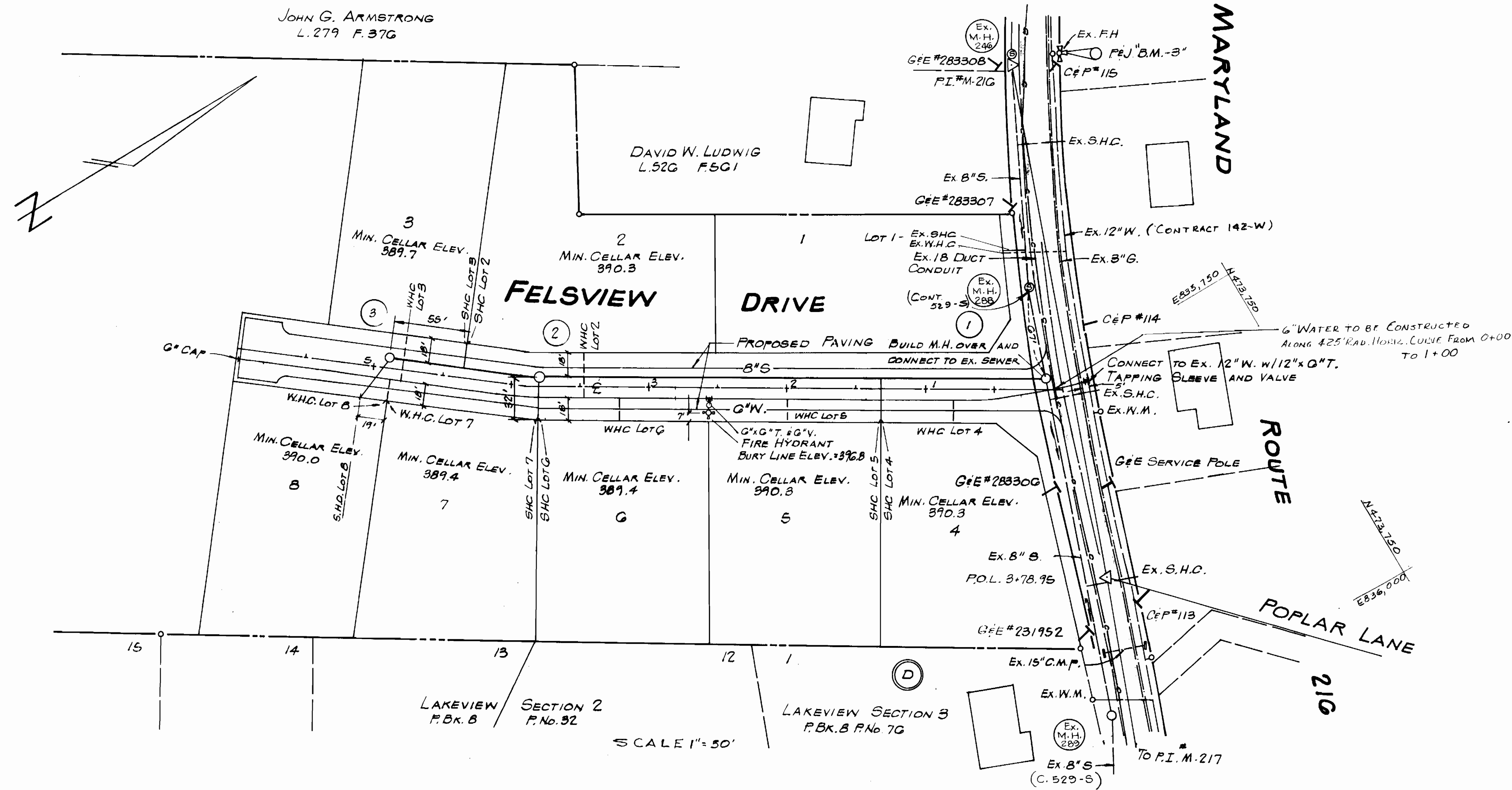


JOHN G. ARMSTRONG
L.279 F.376

DAVID W. LUDWIG
L.526 F.561

MARYLAND



VICINITY MAP
SCALE: 1" = 600'

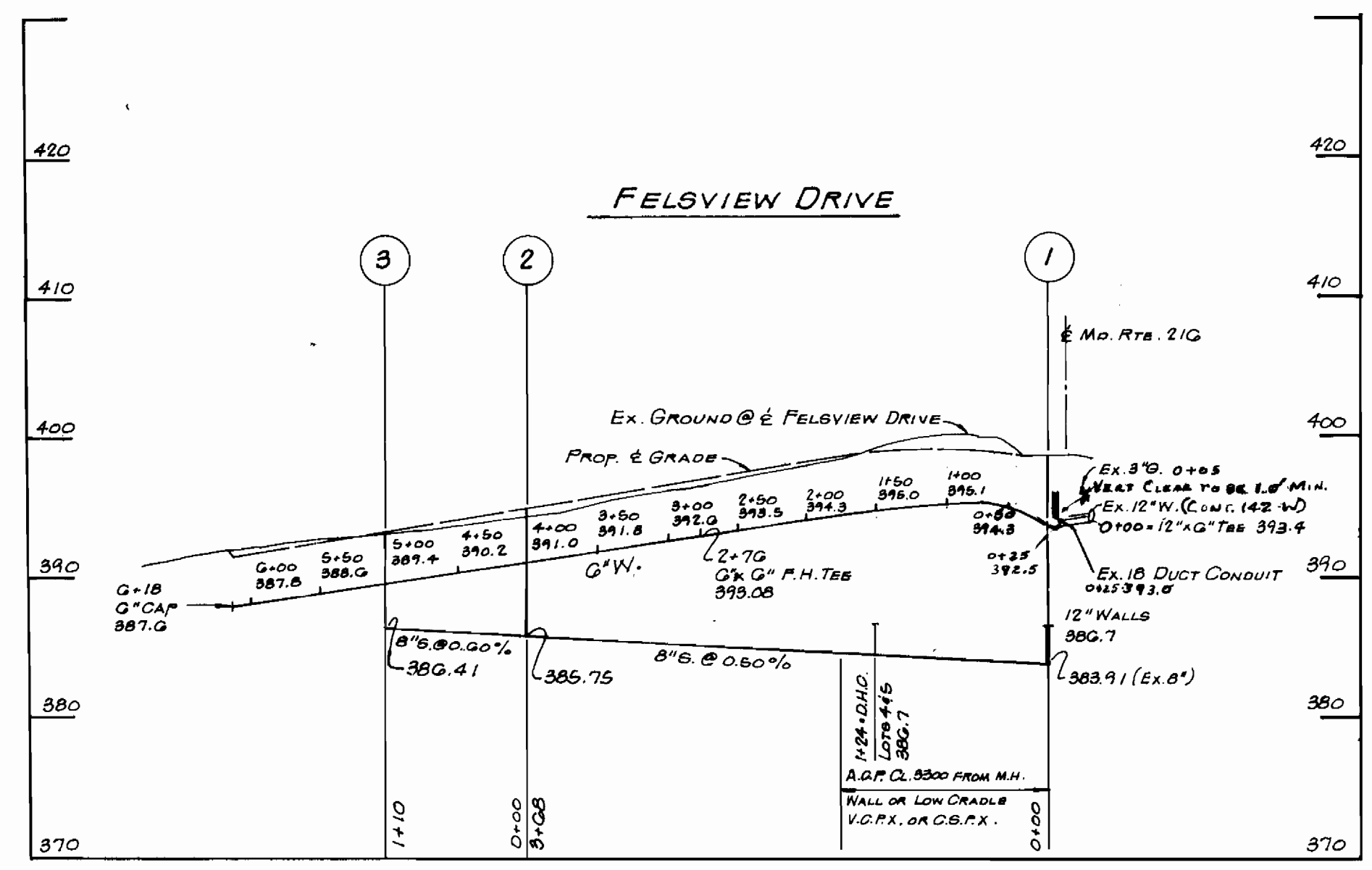
GENERAL NOTES

1. APPROXIMATE LOCATION OF EXISTING MAINS ARE SHOWN. THE CONTRACTOR SHALL TAKE ALL NECESSARY PRECAUTIONS TO PROTECT EXISTING MAINS AND TO MAINTAIN UNINTERRUPTED SERVICE. ANY DAMAGE INCURRED DUE TO THE CONTRACTOR'S OPERATION SHALL BE REPAIRED IMMEDIATELY.
2. ALL PIPE ELEVATIONS SHOWN ARE INVERT ELEVATIONS.
3. THE CONTRACTOR SHALL LOCATE EXISTING UTILITIES A MINIMUM OF 2 WEEKS IN ADVANCE OF CONSTRUCTION IN VICINITY OF CONSTRUCTION.
4. THE CONTRACTOR SHALL NOTIFY THE FOLLOWING UTILITIES OR AGENCIES AT LEAST FIVE DAYS BEFORE STARTING WORK SHOWN ON THIS PLAN.
BALTIMORE GAS & ELECTRIC COMPANY
UNDERGROUND ELECTRIC DISTRIBUTION ENGINEERING DAMAGE CONTROL 234-56
UNDERGROUND GAS DISTRIBUTION ENGINEERING 559-0100
CHESAPEAKE & POTOMAC TELEPHONE COMPANY 727-9970
5. FOR ALL STANDARD DETAILS, SEE STANDARDS BOUND IN SPECIFICATIONS.
6. CLEAR ALL UTILITIES BY A MINIMUM OF 6"; CLEAR ALL POLES BY A MINIMUM OF 2'-0" OR TUNNELS REQUIRED.
7. ALL WATER MAINS SHALL BE C.I.P., D.I.P. OR A.D.P. UNLESS OTHERWISE NOTED.
8. ALL WATER MAINS SHALL HAVE A MINIMUM OF 3 1/2' COVER.
9. BLOCK ALL FITTINGS WITH CONCRETE. SEE STANDARDS BOUND IN SPECIFICATIONS.
10. ALL VALVES SHALL BE STRAPPED TO TEES WHERE APPLICABLE IN ACCORDANCE WITH THE STANDARD DETAILS.
11. PAYMENT FOR STRAPPING FIRE HYDRANTS AND VALVES WILL BE INCLUDED IN UNIT PRICE BID FOR FURNISHING AND LAYING WATER MAINS.
12. ALL FIRE HYDRANTS SHALL BE STRAPPED AND BUTTRESSED IN ACCORDANCE WITH THE STANDARD DETAILS. SOIL UNDER THE FIRE HYDRANTS SHALL BE COMPACTED IN ACCORDANCE WITH SECTION 5-15 OF THE STANDARD SPECIFICATIONS.
13. BURY LINE ELEVATIONS ON FIRE HYDRANTS SHALL BE SET TO ELEVATIONS SHOWN ON DRAWINGS.
14. ALL W.H.C.'S SHALL 3/4" DIAMETER UNLESS OTHERWISE NOTED.
15. WATER SERVICES SHALL BE FOR INSIDE METER SETTING.
16. ALL SEWER MAINS SHALL BE C.S.P.X., V.C.P.X., OR A.D.P. CLASS 2400 UNLESS OTHERWISE NOTED.
17. ALL MANHOLES SHALL BE 4'-0" DIAMETER.
18. THE CONTRACTOR SHALL PROVIDE A JOINT IN ALL SEWER MAINS WITHIN 2'-0" OF EXTERIOR MANHOLE WALLS.

LAKEVIEW SECTION 2
P.B.K. B P.No. 32

LAKEVIEW SECTION 3
P.B.K. B P.No. 70

SCALE 1" = 50'



SCALE 1" = 100' HOR
1" = 10' VERT

BENCH MARKS

- P&J "B.M.-1" ELEV. 404.24
ROAD SIDE BONNET BOLT OF FIRE HYDRANT AT RTE. 217 & TOWER DRIVE
- P&J "B.M.-3" ELEV. 408.42
ROAD SIDE BONNET BOLT OF FIRE HYDRANT 36' N. OF P.I. #M-217
- P&J "B.M.-5" ELEV. 392.25
EAST BONNET BOLT ON FIRE HYDRANT 6' E. OF C&P #110, 250' S.E. OF #M-217

QUANTITIES		
ITEM	PROPOSED	AS-BUILT
8" SEWER	477 L.F.	
6" WATER	618 L.F.	
MANHOLES	29,5 V.F.	
C'S.H.C.	118 L.F.	
3/4" W.H.C.	130 L.F.	
FIRE HYDRANT	1 EACH	



Richard C. Keyser P.E.
15418

THE J.E. CLARK CO.
935 NICHOLS DRIVE
LAUREL, MARYLAND

DEPARTMENT OF PUBLIC WORKS
HOWARD COUNTY, MARYLAND
2-28-78
DIRECTOR OF PUBLIC WORKS DATE

CONTRACT NO. 217G-D-WES

PLAN OF WATER AND SEWER MAINS

FELSVIEW DRIVE
LAKEVIEW
WATER & SEWER MAIN EXTENSION
GUILFORD ELECTION DISTRICT NO. 6 HOWARD COUNTY, MD.

DRAWING NO. 1 OF 1 SCALE AS SHOWN

Felsview Drive
Lakeview
contract No. 217G-D-WES