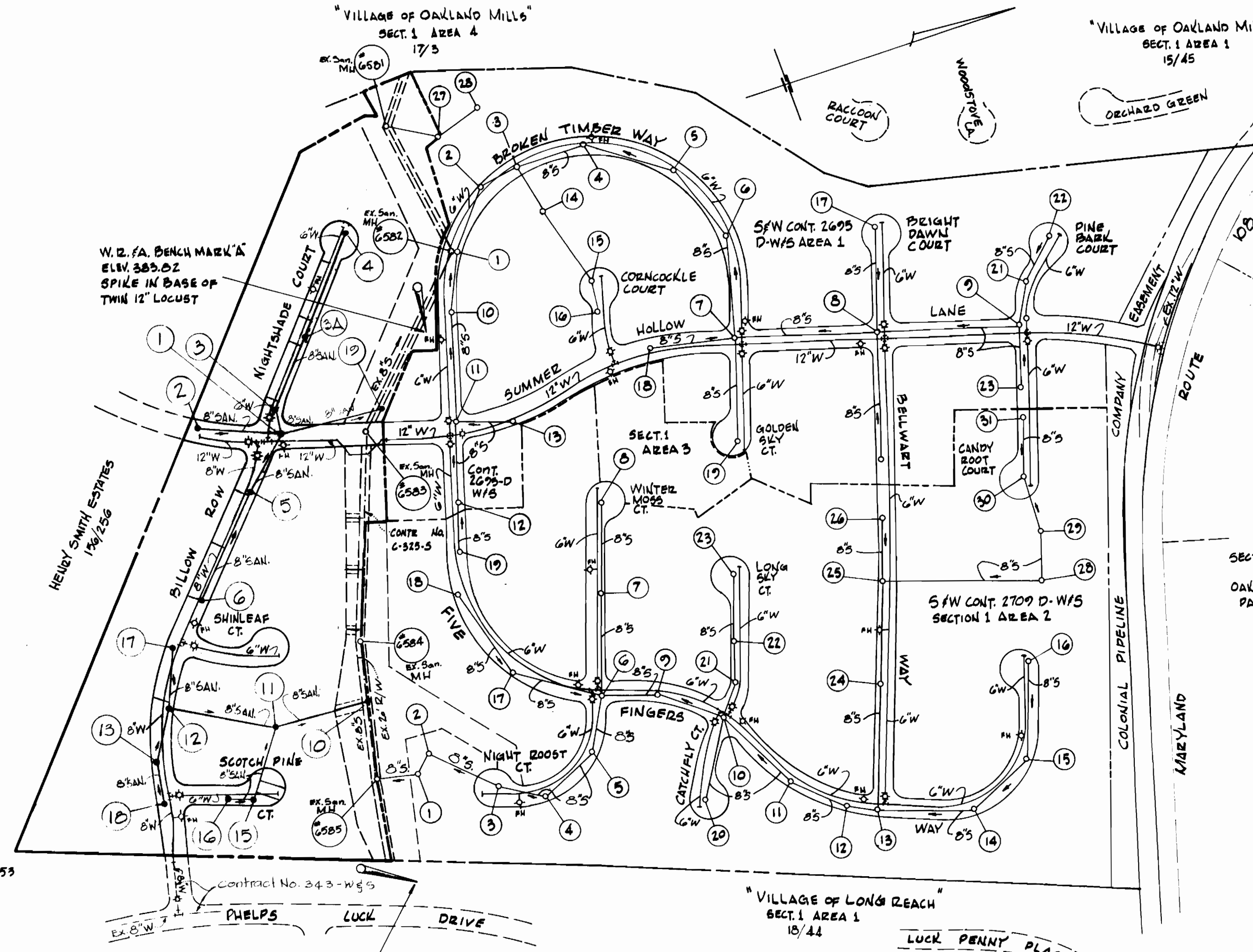


VICINITY MAP
SCALE: 1" = 200'

GENERAL NOTES

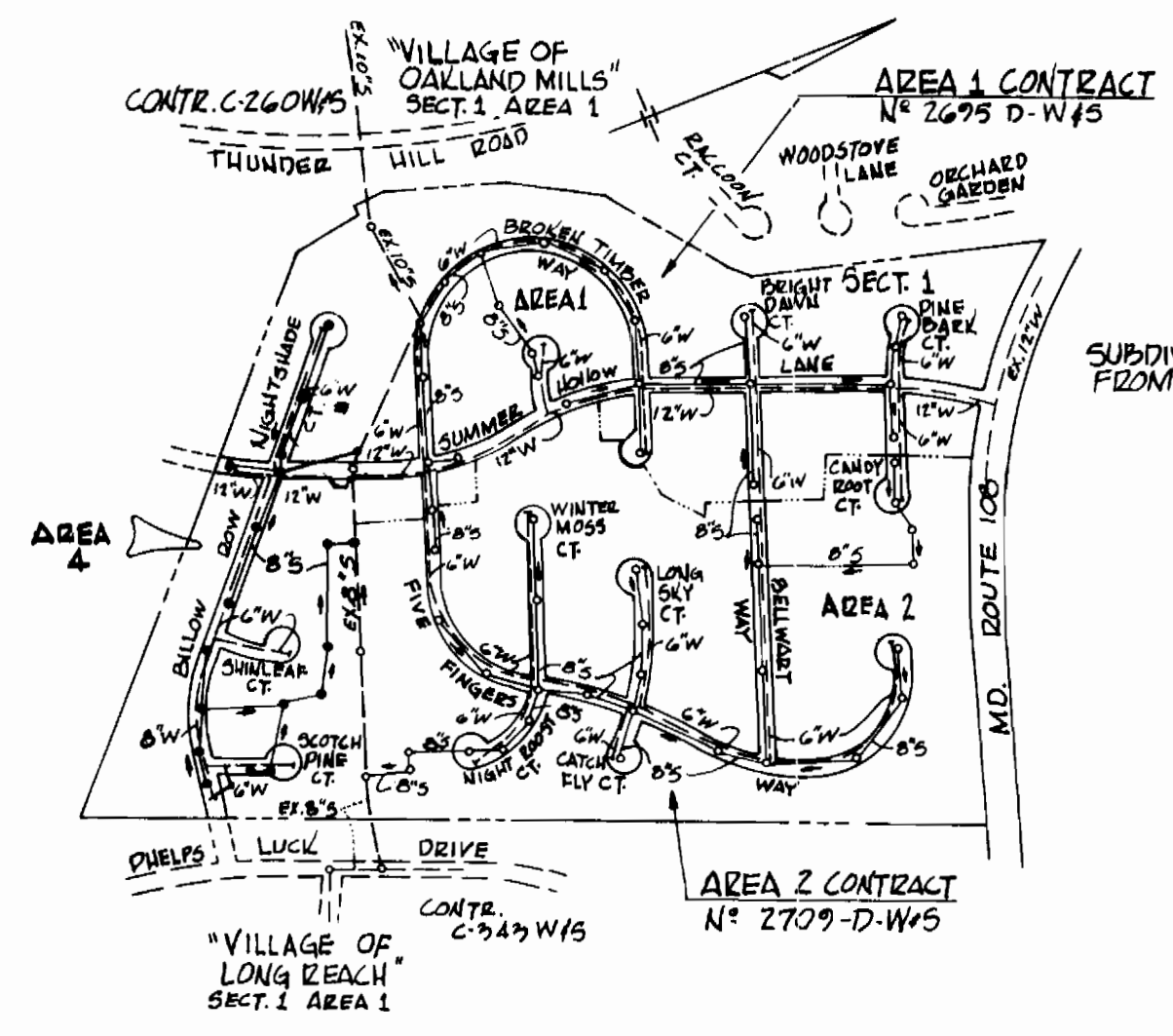
1. APPROXIMATE LOCATIONS OF EXISTING MAINS ARE SHOWN. THE CONTRACTOR SHALL TAKE ALL NECESSARY PRECAUTIONS TO PROTECT EXISTING MAINS AND SERVICES AND MAINTAIN UNINTERRUPTED SUPPLY. ANY DAMAGE INCURRED SHALL BE REPAIRED IMMEDIATELY.
2. ALL HORIZONTAL CONTROLS ARE BASED ON MARYLAND STATE COORDINATES.
3. ALL VERTICAL CONTROLS ARE BASED ON U.S.G.S. DATUM.
4. ALL PIPE ELEVATIONS AS SHOWN ARE INVERT ELEVATIONS.
5. CLEAR ALL UTILITIES BY A MINIMUM OF 6" CLEAR ALL POLES 2'-0" MINIMUM OR TUNNEL AS REQUIRED.
6. FOR ALL STANDARD DETAILS SEE STANDARDS BOUND IN SPECIFICATIONS.
7. CONTRACTOR SHALL NOTIFY THE FOLLOWING UTILITIES OR AGENCIES AT LEAST FIVE (5) DAYS BEFORE STARTING WORK SHOWN ON THESE PLANS:
STATE HIGHWAY ADMINISTRATION 531-5335
BALTIMORE GAS AND ELECTRIC CO. - UNDERGROUND GAS DISTRIBUTION ENGINEERING-539-0100
BALTIMORE GAS AND ELECTRIC CO. - UNDERGROUND ELECTRIC DISTRIBUTION ENGINEERING-"DAMAGE CONTROL" 234-5691
CHESAPEAKE AND POTOMAC TELEPHONE CO. 725-9976
AMERICAN TELEPHONE AND TELEGRAPH - CABLE LOCATION DIVISION - 301-393-3555
COLONIAL PIPELINE COMPANY - 781-4641
8. CONTRACTOR SHALL LOCATE EXISTING UTILITIES IN ADVANCE OF CONSTRUCTION OPERATIONS IN THE VICINITY OF PROPOSED UTILITIES.
9. TREES ARE TO BE PROTECTED FROM DAMAGE TO MAXIMUM EXTENT. TREES LOCATED WITHIN THE CONSTRUCTION STRIP ARE NOT TO BE REMOVED OR DAMAGED BY THE CONTRACTOR.
10. CONTRACTOR SHALL REMOVE TREES, STUMPS, AND ROOTS ALONG LINE OF EXCAVATION AS DIRECTED BY THE ENGINEER. PAYMENT FOR SUCH REMOVAL SHALL BE INCLUDED IN THE UNIT PRICE BID FOR EXCAVATION AND BACKFILL FOR WATER & SEWER MAINS.
11. PLACE REGULATION "MEN WORKING" AND WARNING SIGNS AS REQUIRED TO COMPLY WITH MARYLAND STATE HIGHWAY ADMINISTRATION MANUAL OF TRAFFIC CONTROL FOR HIGHWAY CONSTRUCTION AND MAINTENANCE OPERATIONS.
12. ALL WATER MAINS TO BE C.I.P., D.I.P., OR A.C.P. UNLESS OTHERWISE NOTED.
13. TOP OF ALL WATER MAINS TO HAVE A MINIMUM OF 3/4" COVER UNLESS OTHERWISE NOTED.
14. ALL VALVES SHALL BE STRAPPED TO TEES IN ACCORDANCE WITH STANDARD DETAILS.
15. BLOCK ALL FITTINGS WITH CONCRETE. SEE STANDARDS BOUND IN SPECIFICATIONS.
16. BURY LINE ELEVATIONS ON FIRE HYDRANTS SHALL BE SET TO THE ELEVATIONS SHOWN ON THE DRAWINGS. ALL FIRE HYDRANTS SHALL BE STRAPPED AND BUTTERESSED WITH CONCRETE IN ACCORDANCE WITH STANDARD DETAILS. SOIL AROUND THE FIRE HYDRANTS TO BE COMPACTED IN ACCORDANCE WITH SECT. 5-15 OF THE STANDARD SPECIFICATIONS.
17. ALL WATER HOUSE CONNECTIONS SHALL BE INSIDE METER SETTINGS.
18. ALL WATER HOUSE CONNECTIONS TO BE 3/4" DIAMETER UNLESS OTHERWISE NOTED.
19. ALL SEWER MAINS SHALL BE C.S.P., V.C.P. OR ACP CLASS 2400 UNLESS OTHERWISE NOTED.
20. THE CONTRACTOR SHALL PROVIDE A JOINT IN ALL SEWER MAINS WITHIN 2'-0" OF EXTERIOR MANHOLE WALL.
21. ALL MANHOLES SHALL BE 4'-0" INSIDE DIAMETER, UNLESS OTHERWISE NOTED.



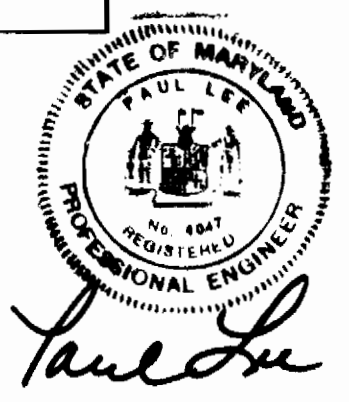
LOCATION PLAN
SCALE = 1" = 200'

WATER & SEWER CODE FOR (COUNTY USE)	
WATER NO. 607	
1) SEWER NO. 5633900	
All Connections Draining to MH #19	
2) All Connections Draining to MH #10	
No. 5634200	

BILL OF MATERIALS		
ITEM	QUANTITY	AS BUILT
SEWER 8"	2627 L.F.	
WATER 6"	1140 L.F.	
WATER 12"	556 L.F.	
FIRE HYDRANTS	4	
WATER 8"	1150 L.F.	



LOCATION PLAN
SCALE 1" = 600'



MCA ENGINEERING CORPORATION
ENGINEERS
1020 CROMWELL BRIDGE ROAD
TOWSON, MD. 21204

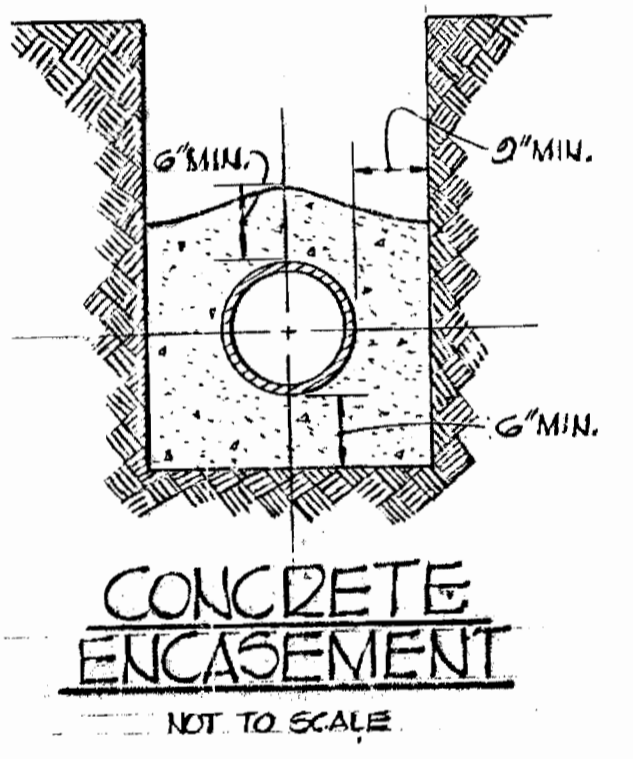
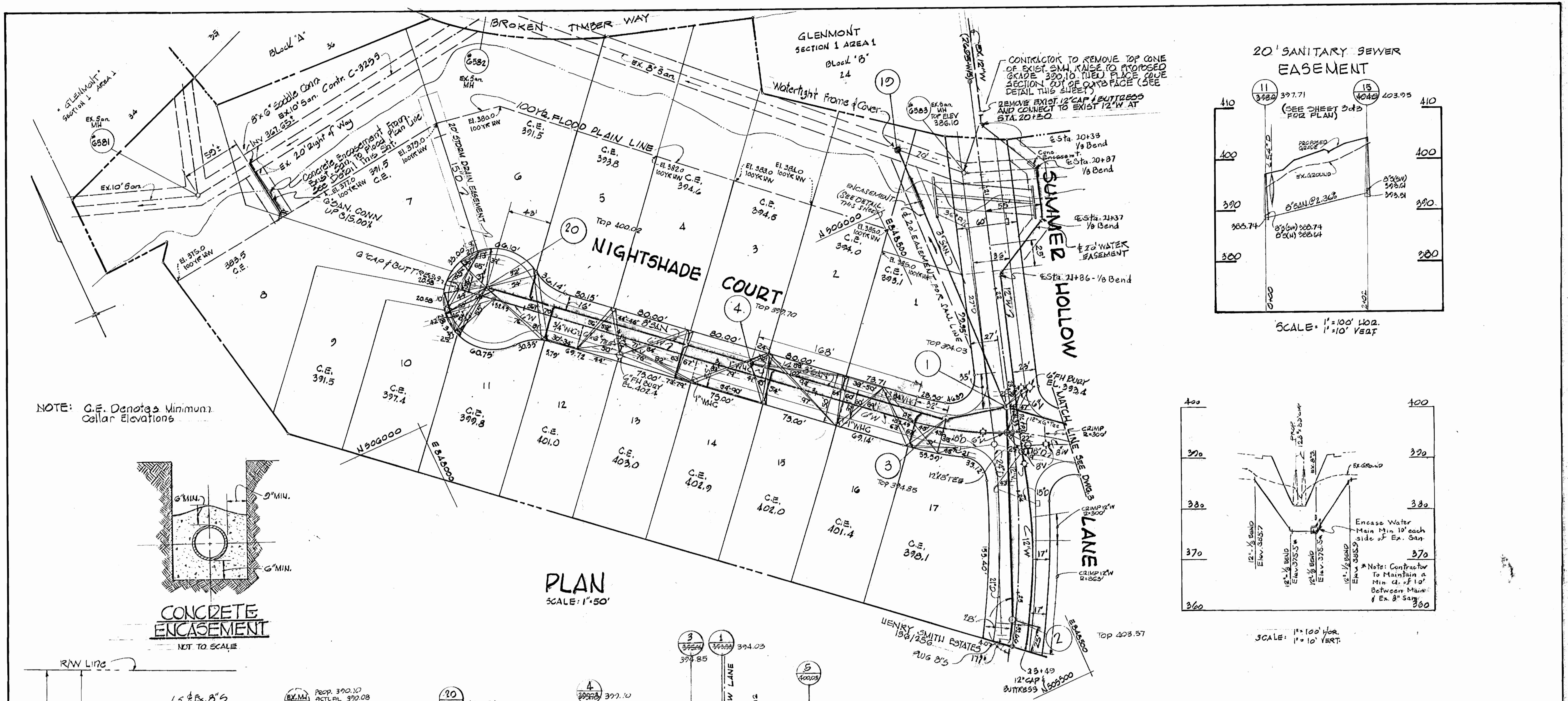
DEPARTMENT OF PUBLIC WORKS
HOWARD COUNTY, MARYLAND
R. E. Sanderberg 4/24/78 DIRECTOR
W. O. [Signature] 4-20-78 CHIEF BUREAU OF ENGINEERING

CONTRACT NO. 2771-D-W/S

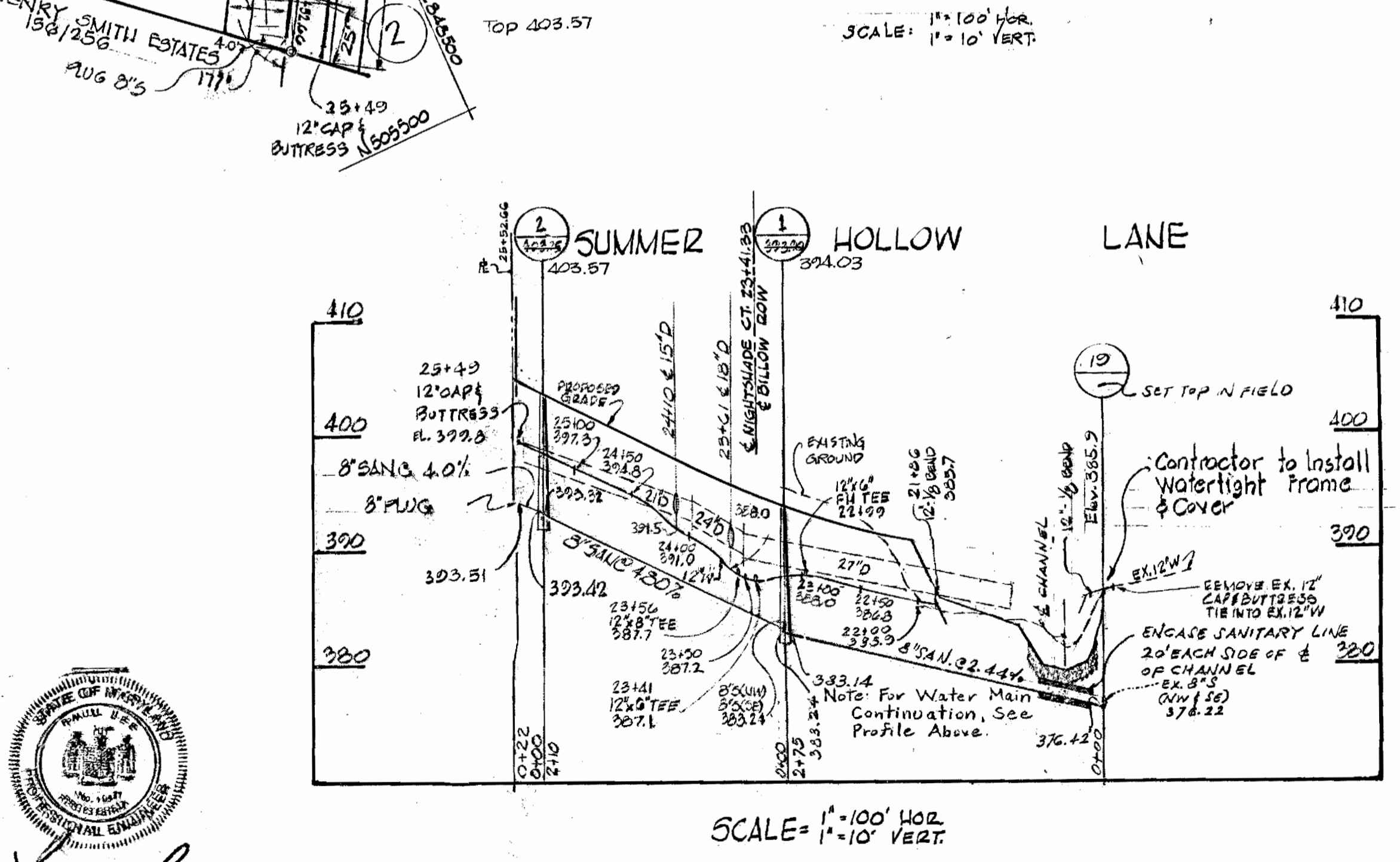
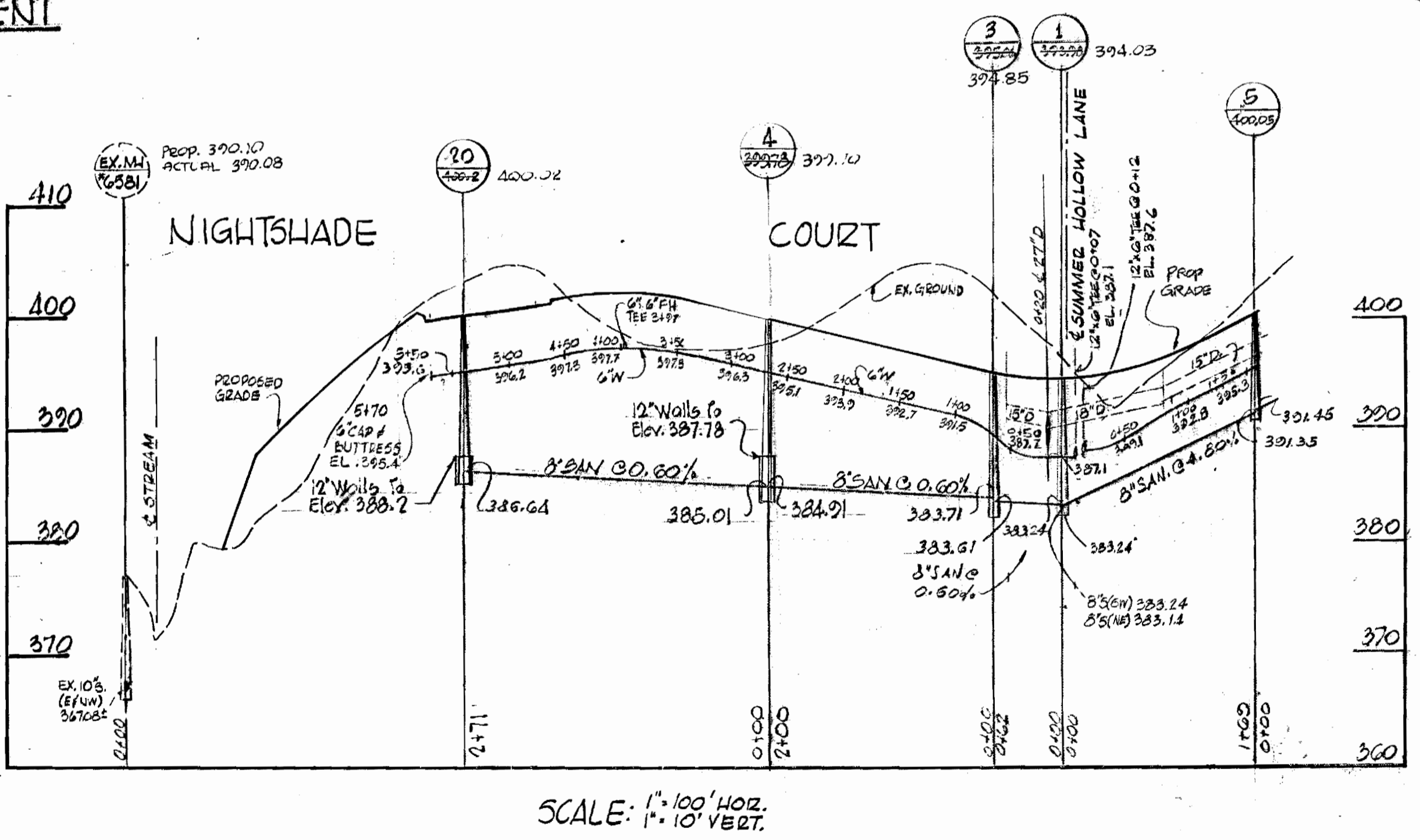
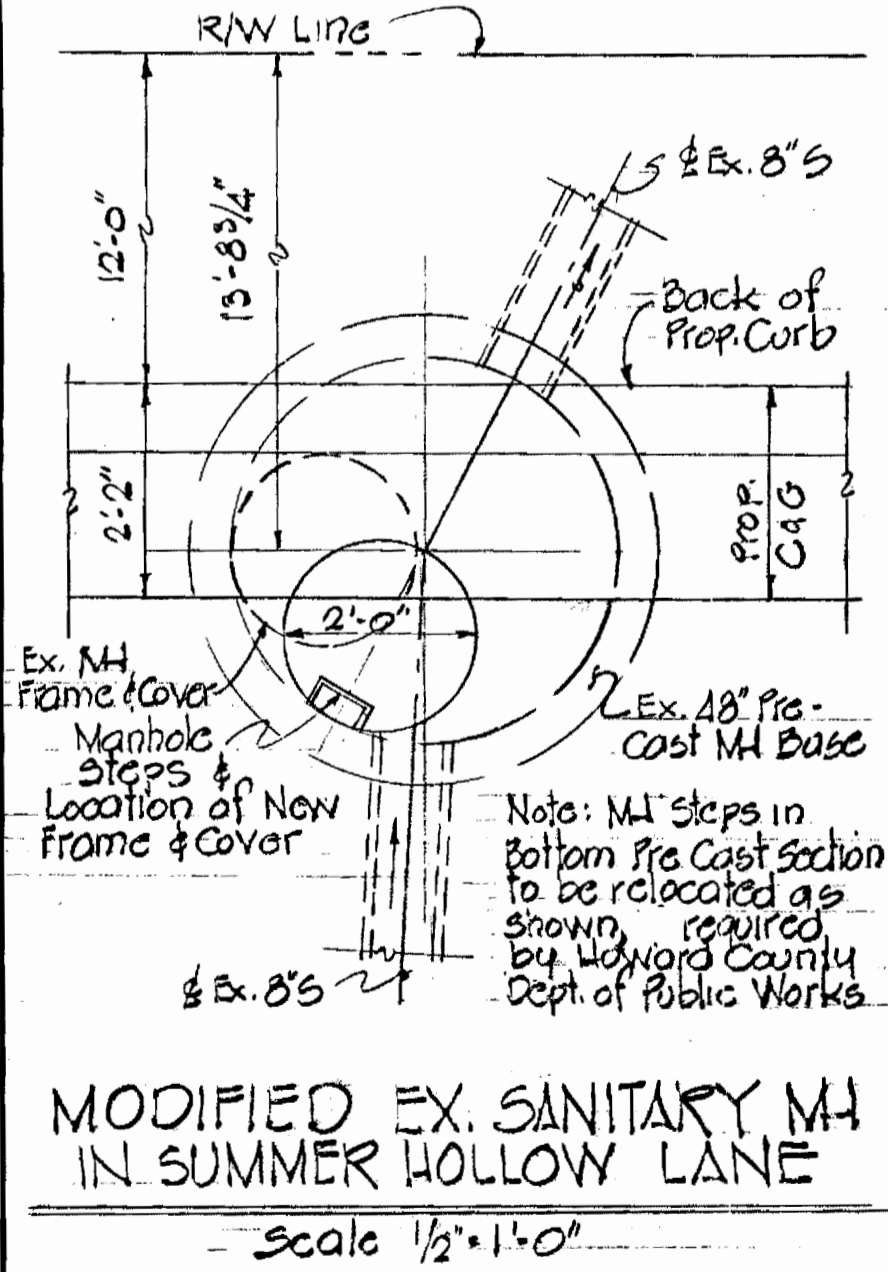
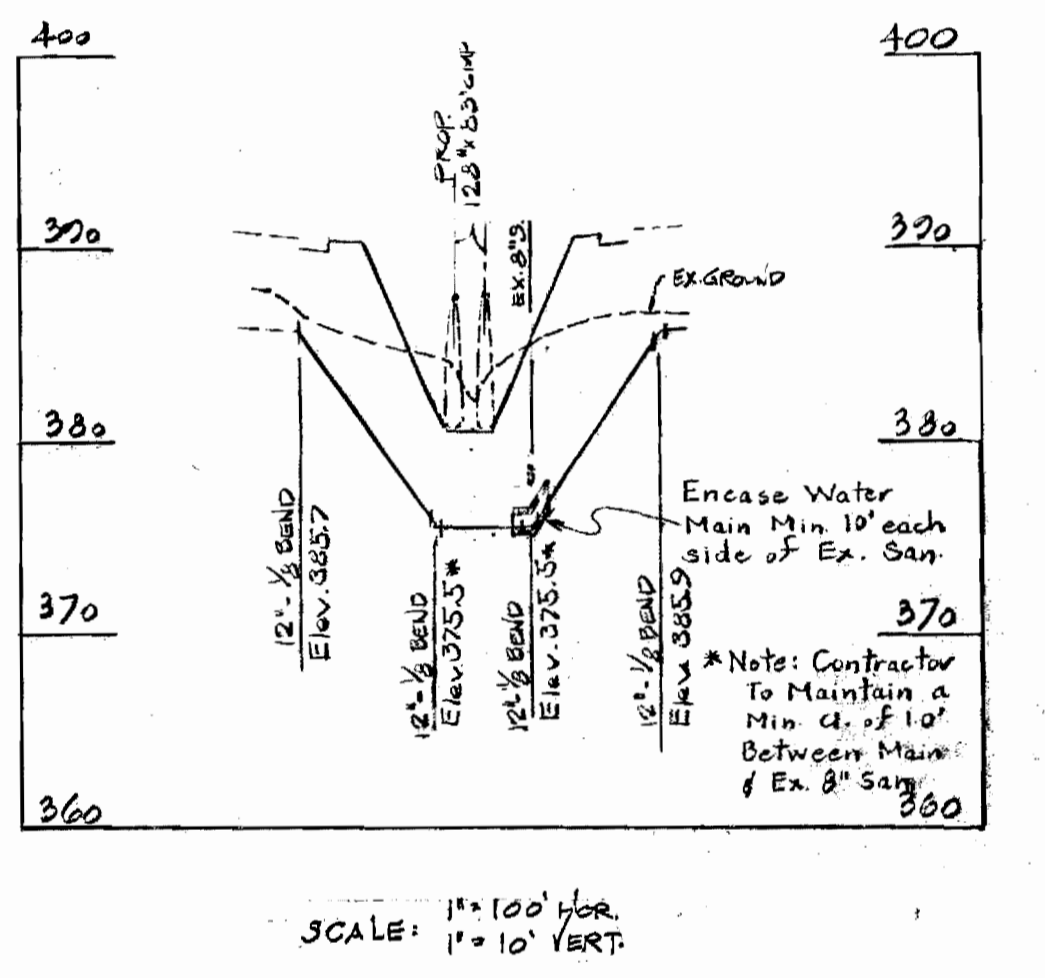
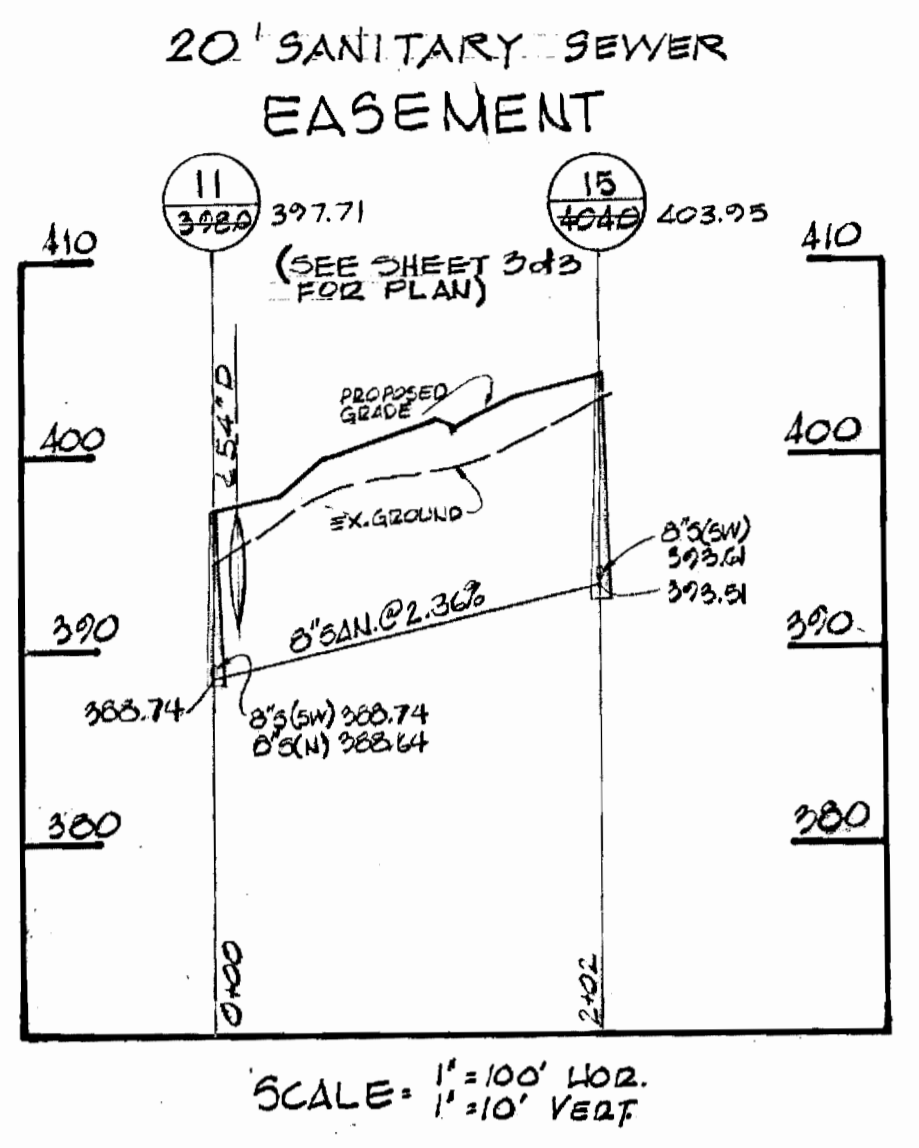
LOCATION MAP OF WATER & SEWER MAINS

GLENMONT SECTION 1 AREA 4 ELECTION DISTRICT GUILFORD No. 6

DRAWING NO. 1 OF 3 SCALE 1" = 200'



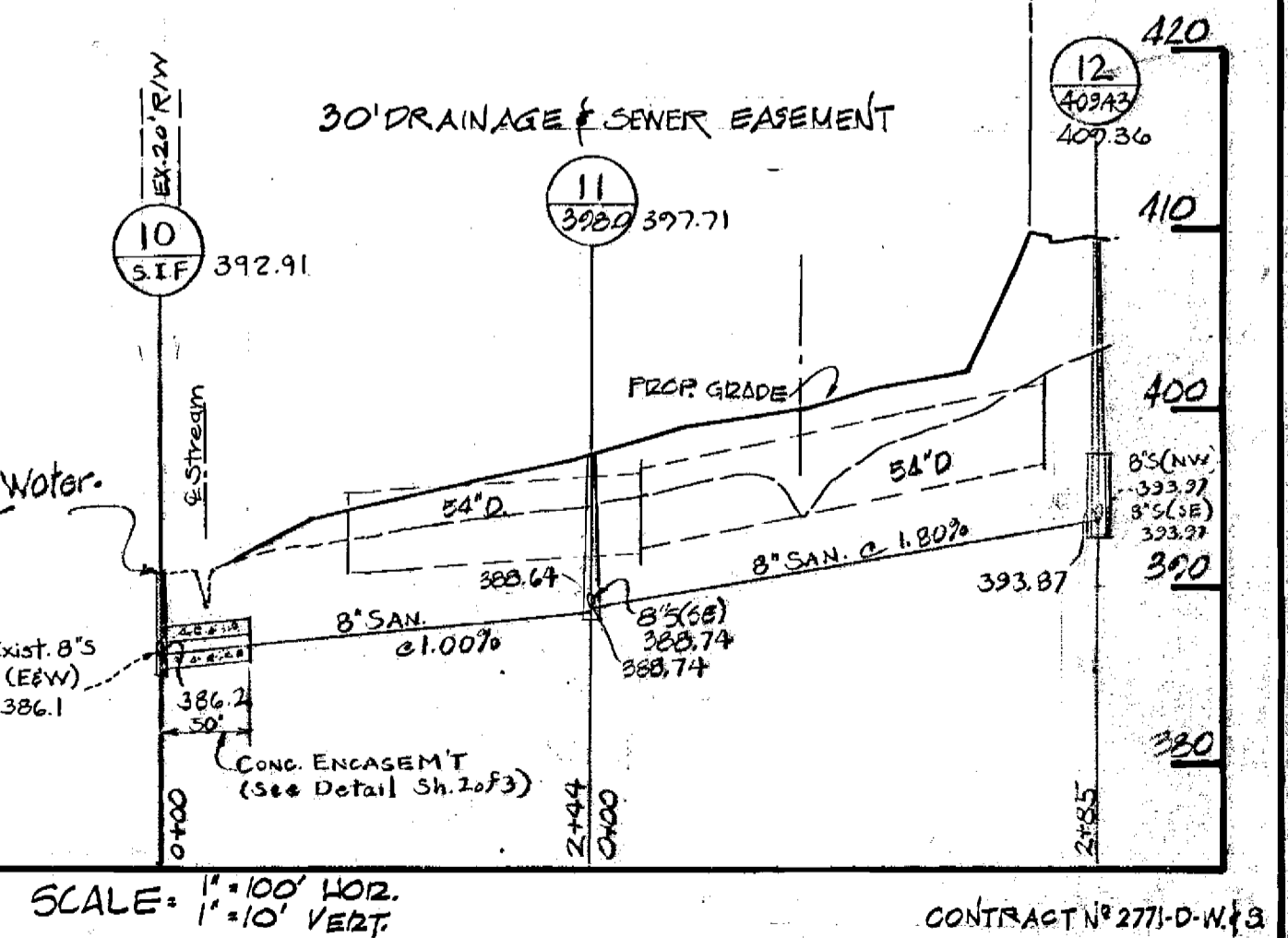
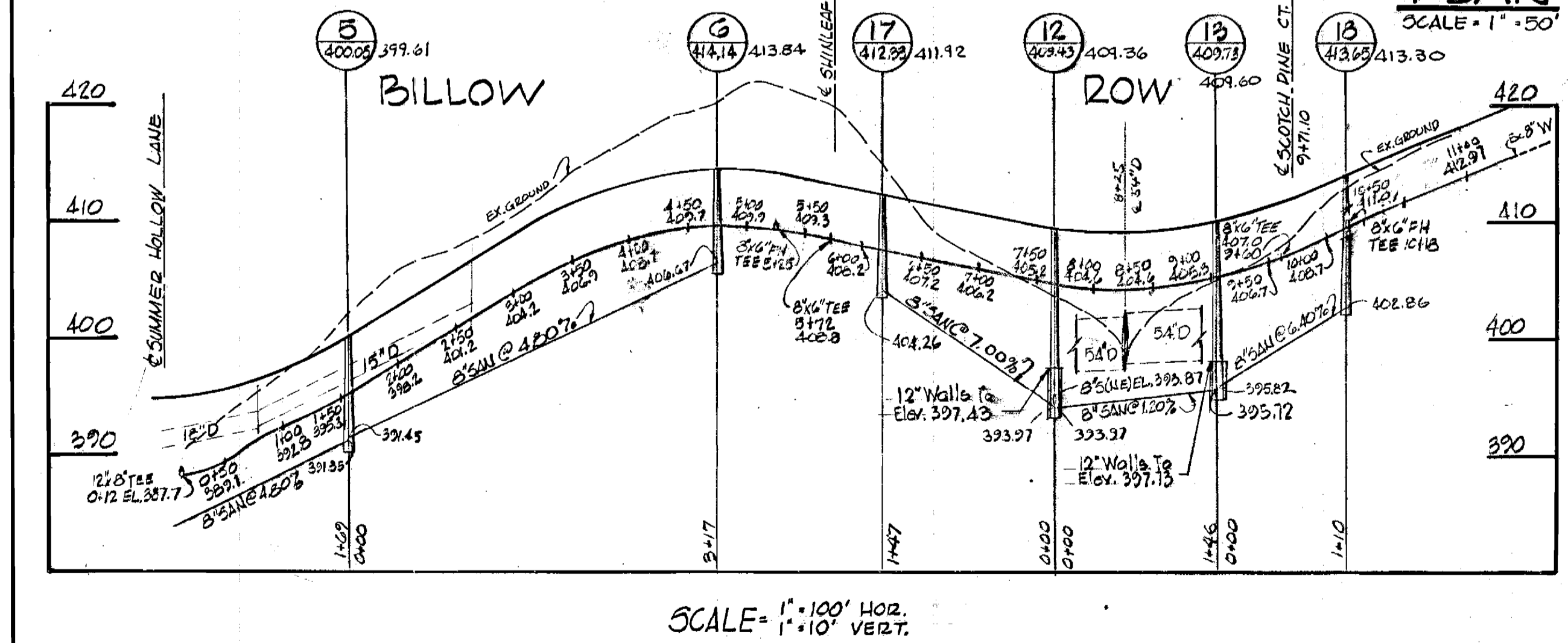
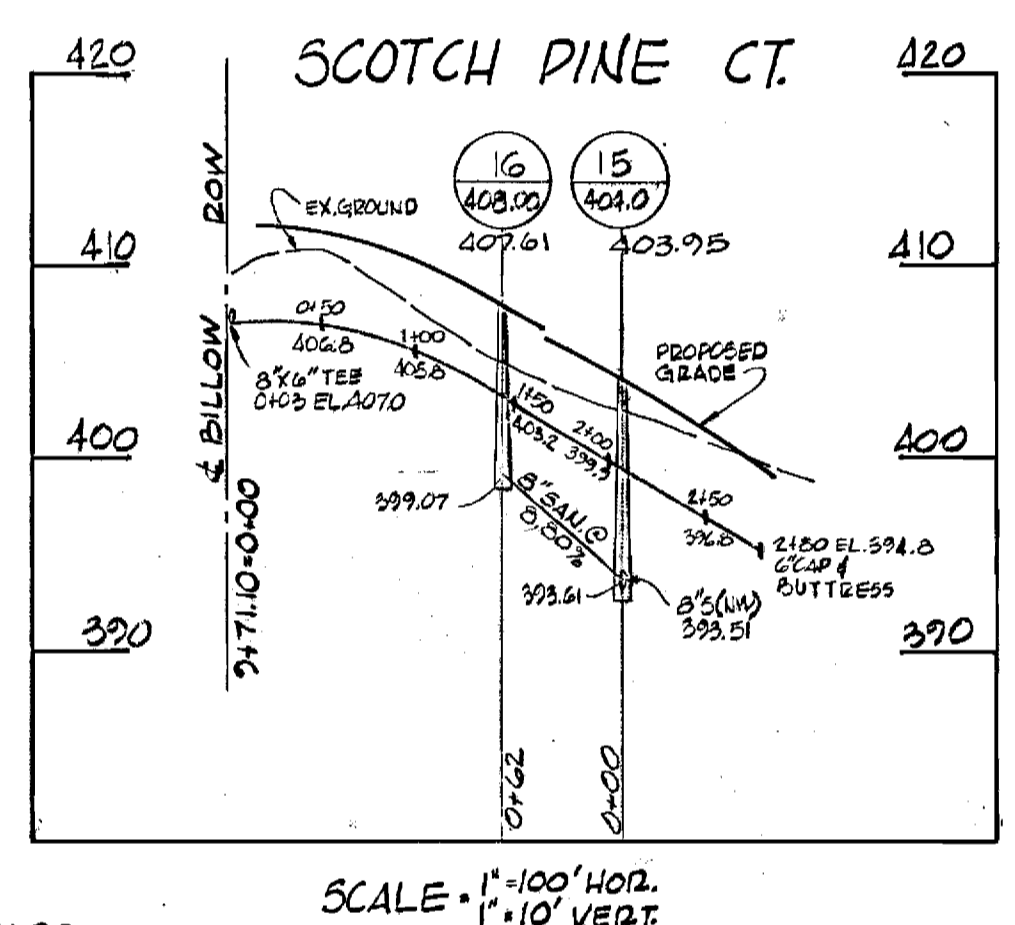
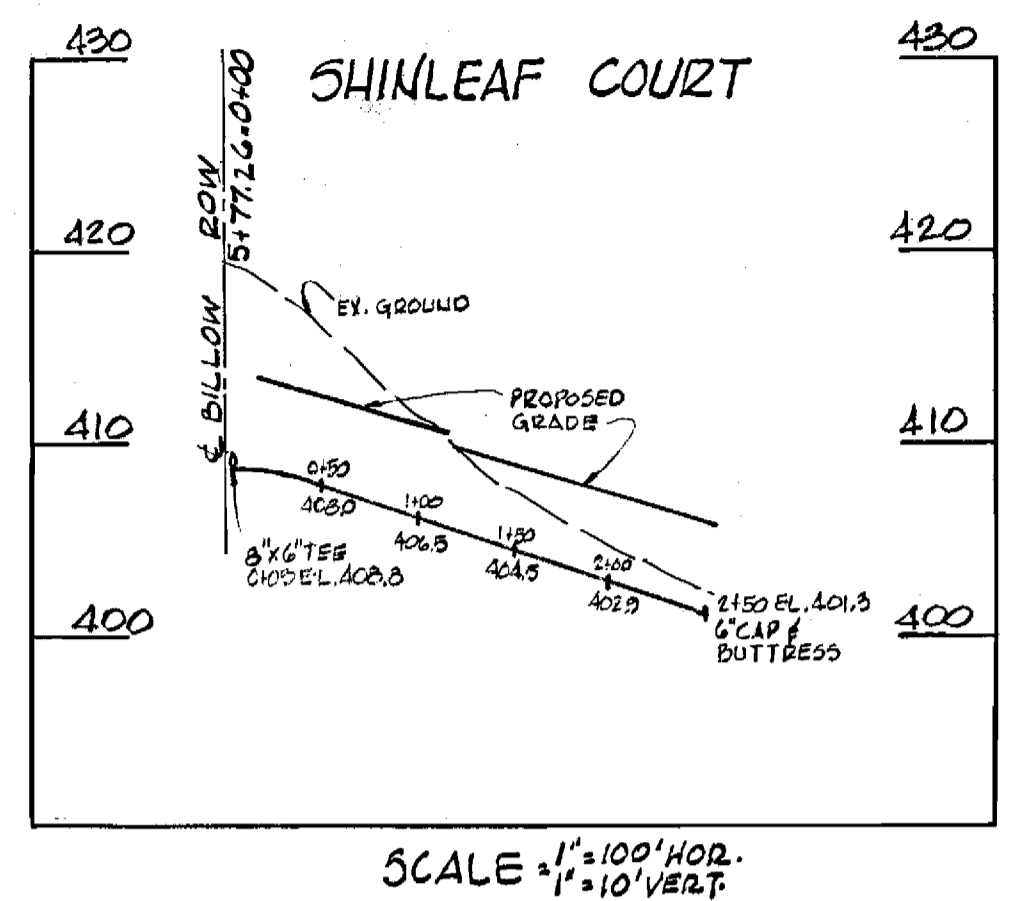
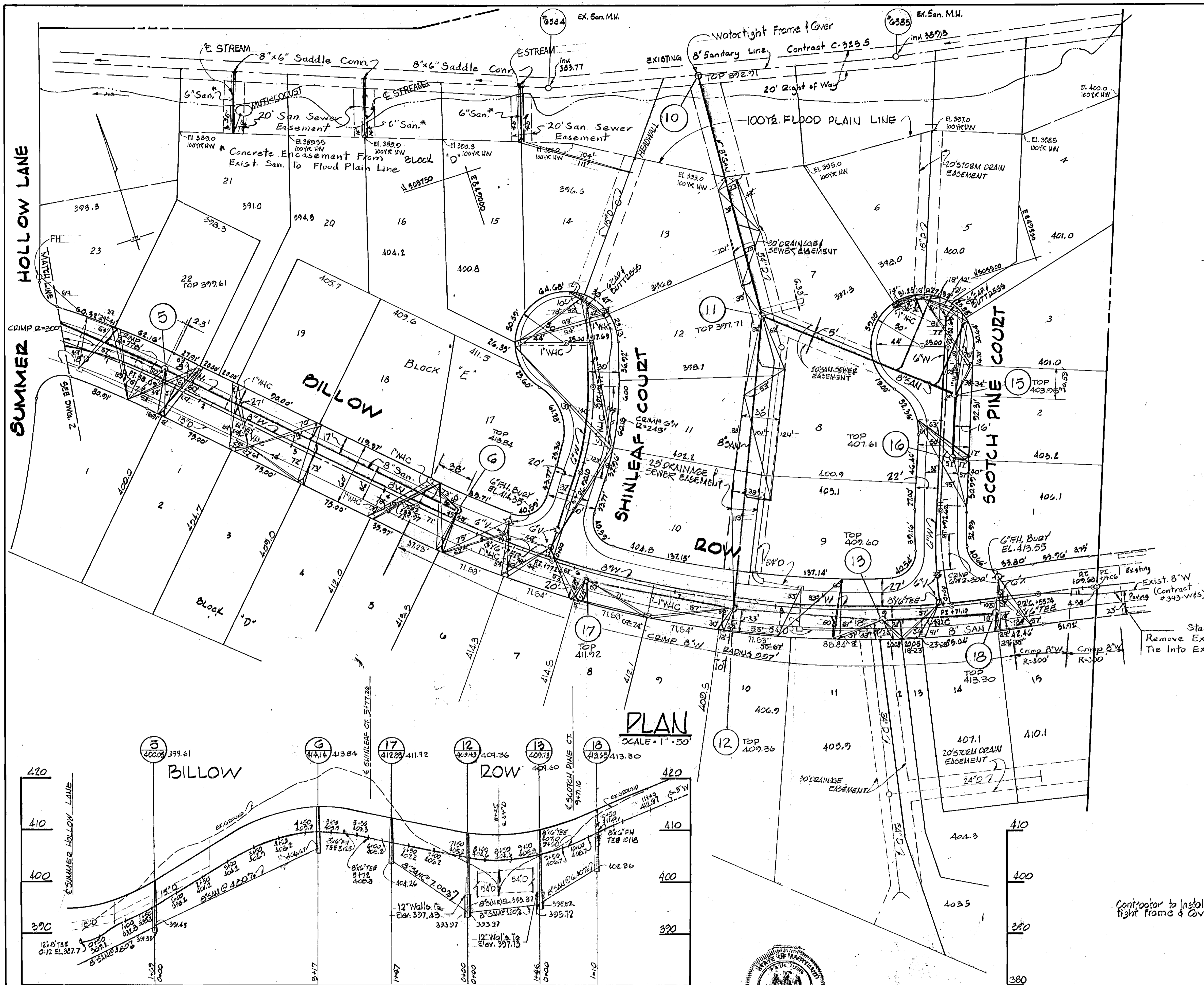
PLAN
SCALE: 1"=50'



Paul La

MCA ENGINEERING CORPORATION ENGINEERS 1020 CROMWELL BRIDGE ROAD TOWSON, MD. 21204	DEPARTMENT OF PUBLIC WORKS HOWARD COUNTY, MD. R. E. Audenberg 4/24/78 DIRECTOR DATE	CONTRACT NO. 2771-D-W45 W. O. Libert 4-20-78 CHIEF, BUREAU OF ENGINEERING DATE	PLAN & PROFILE OF WATER & SEWER MAINS	GLENMONT SECTION I AREA 4 ELECTION DISTRICT GUILFORD NO. 6	DRAWING NO. 2 OF 3	SCALE AS NOTED
--	--	--	--	--	--------------------------	-------------------

AS-BUILT 11-8-78



MCA ENGINEERING CORPORATION
 ENGINEERS
 1020 CROMWELL BRIDGE RD.
 TOWSON, MD 21204

DEPARTMENT OF PUBLIC WORKS
 Howard County, MD.
 R.E. Gruendeyen 4/24/78
 DIRECTOR DATE
 W.D. Hubert 4-20-78
 CHIEF, BUREAU OF ENGINEERING DATE

CONTRACT NO. 2771-D-W43

PLAN & PROFILE OF
 WATER & SEWER MAINS

GLENMONT
 SECTION 1 AREA 4
 ELECTION DISTRICT GUILFORD No. 6

DRAWING
 No. 3
 OF 3
 SCALE
 AS NOTED

AS-BUILT 11-8-78