

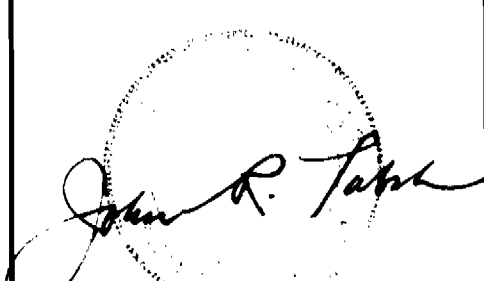
No.	Date	Revision
1	1-27-78	Add Bench Mark ex. Utilities on Glenn Brook Dr.

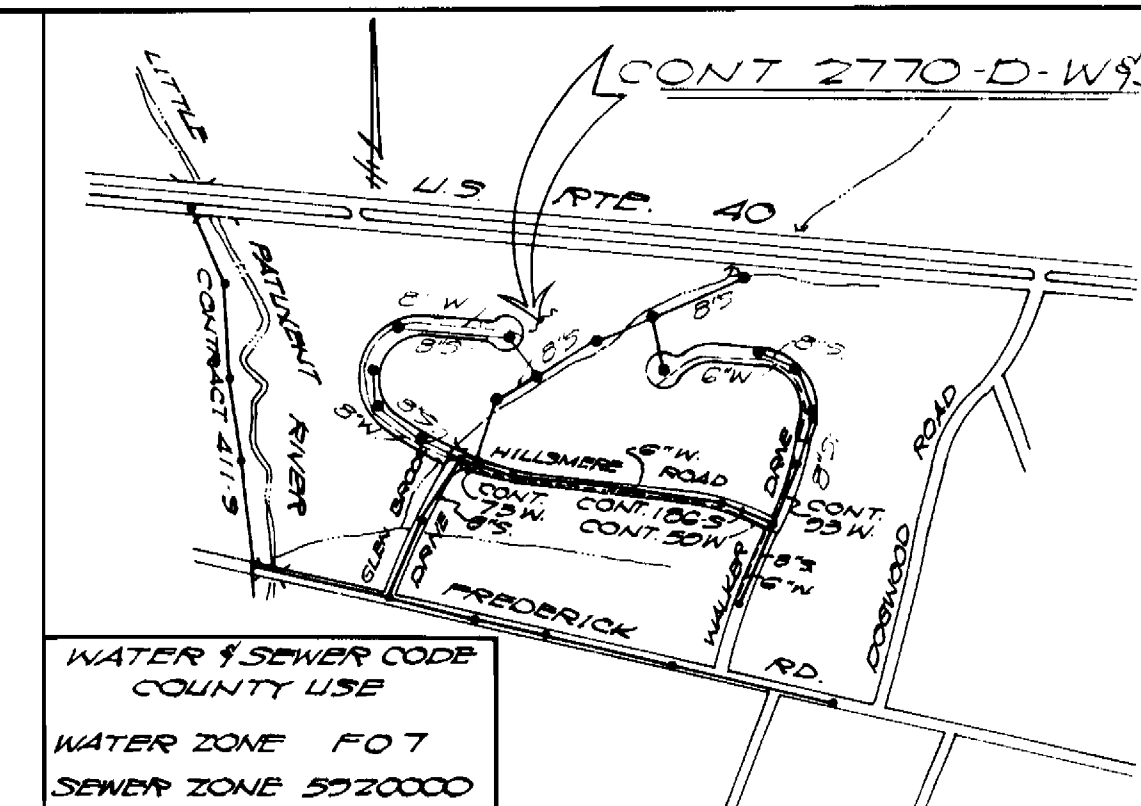
$\frac{1}{250,000}$
 $\frac{1}{575,000}$

QUANTITIES			
ITEM	QUANT.	AS-BUILT	SUPPLIER
8" SAN.	2500		
SAN. MH	15		
6" WATER	840		
8" WATER	1100		
FIRE HYD.	5		
SAN. DROP HC	1		

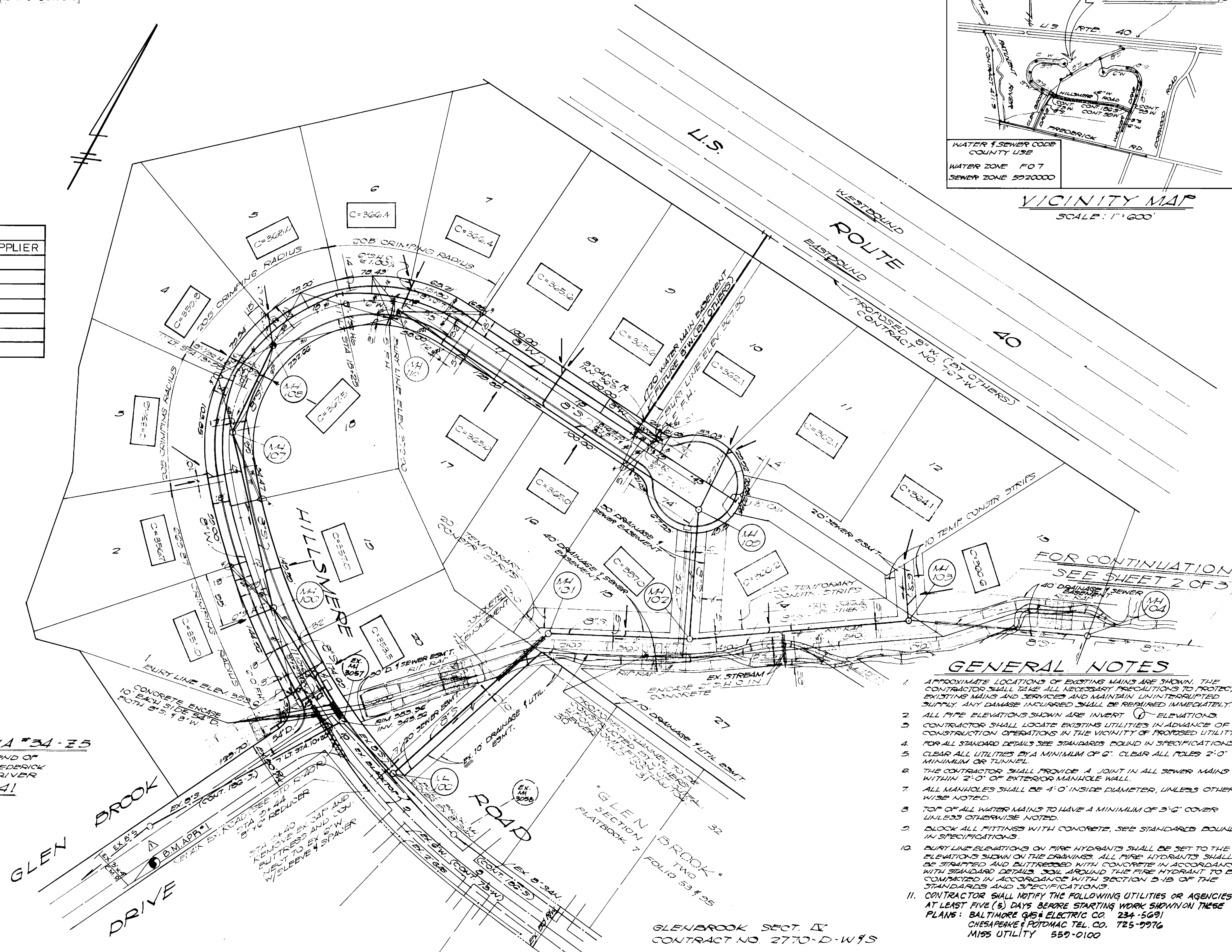
BENCH MARK APP #1
 CROSS CUT ON NORTH END OF
 HEADWALL, EAST SIDE OF GLEN BROOK
 DRIVE, 250' S OF HILLSMERE ROAD
 ELEV. 348.06
 HOWARD CO. DATUM

BENCH MARK W.R.#A #34-75
 CROSS CUT ON SW. TOP END OF
 BRIDGE HEADWALL AT FREDERICK
 RD. & LITTLE PATUXENT RIVER
 ELEV. 352.41
 HOWARD CO. DATUM


 JOHN R. FAHN
 SURVEYOR



VICINITY MAP
 SCALE: 1"=600'



- GENERAL NOTES**
- APPROXIMATE LOCATIONS OF EXISTING MAINS ARE SHOWN. THE CONTRACTOR SHALL TAKE ALL NECESSARY PRECAUTIONS TO PROTECT EXISTING MAINS AND SERVICES AND MAINTAIN UNINTERRUPTED SUPPLY. ANY DAMAGE INCURRED SHALL BE REPAIRED IMMEDIATELY.
 - ALL PIPE ELEVATIONS SHOWN ARE INVERT ELEVATIONS.
 - CONTRACTOR SHALL LOCATE EXISTING UTILITIES IN ADVANCE OF CONSTRUCTION OPERATIONS IN THE VICINITY OF PROPOSED UTILITY.
 - FOR ALL STANDARD DETAILS SEE STANDARDS BOUND IN SPECIFICATIONS.
 - CLEAR ALL UTILITIES BY A MINIMUM OF 6" CLEAR ALL POLES 2'-0" MINIMUM OR TUNNEL.
 - THE CONTRACTOR SHALL PROVIDE A JOINT IN ALL SEWER MAINS WITHIN 2'-0" OF EXTERIOR MANHOLE WALL.
 - ALL MANHOLES SHALL BE 4'-0" INSIDE DIAMETER, UNLESS OTHERWISE NOTED.
 - TOP OF ALL WATER MAINS TO HAVE A MINIMUM OF 3'-0" COVER UNLESS OTHERWISE NOTED.
 - BLOCK ALL FITTINGS WITH CONCRETE, SEE STANDARDS BOUND IN SPECIFICATIONS.
 - BURY LINE ELEVATIONS ON FIRE HYDRANTS SHALL BE SET TO THE ELEVATIONS SHOWN ON THE DRAWINGS. ALL FIRE HYDRANTS SHALL BE STRAPPED AND BUTTRESSED WITH CONCRETE IN ACCORDANCE WITH STANDARD DETAILS. SOIL AROUND THE FIRE HYDRANT TO BE COMPACTED IN ACCORDANCE WITH SECTION 5-18 OF THE STANDARDS AND SPECIFICATIONS.
 - CONTRACTOR SHALL NOTIFY THE FOLLOWING UTILITIES OR AGENCIES AT LEAST FIVE (5) DAYS BEFORE STARTING WORK SHOWN ON THESE PLANS: BALTIMORE GAS & ELECTRIC CO. 234-5691
CHESAPEAKE & POTOMAC TEL. CO. 725-9976
MISS UTILITY 559-0100

APR ASSOCIATES, INC
 LAND SURVEYORS AND ENGINEERS
 BALTIMORE, MARYLAND

DEPARTMENT OF PUBLIC WORKS
 HOWARD COUNTY, MARYLAND
 DIRECTOR OF PUBLIC WORKS: [Signature]
 DATE: 1-24-78
 CHIEF BUREAU OF ENGINEERING: [Signature]
 DATE: 1/23/78

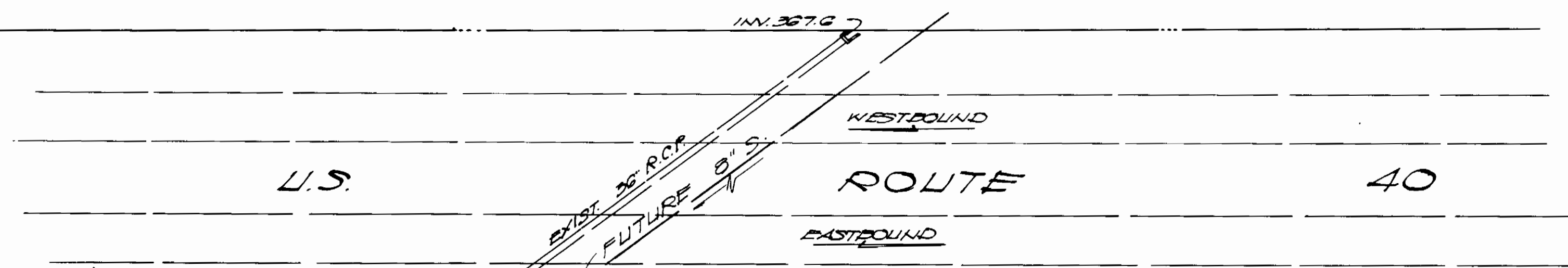
CONTRACT NO. 2770-D-W9S

PLAN OF
 WATER AND SEWER MAINS

GLEN BROOK SECTION 4
 ELECTION DISTRICT NO. 2

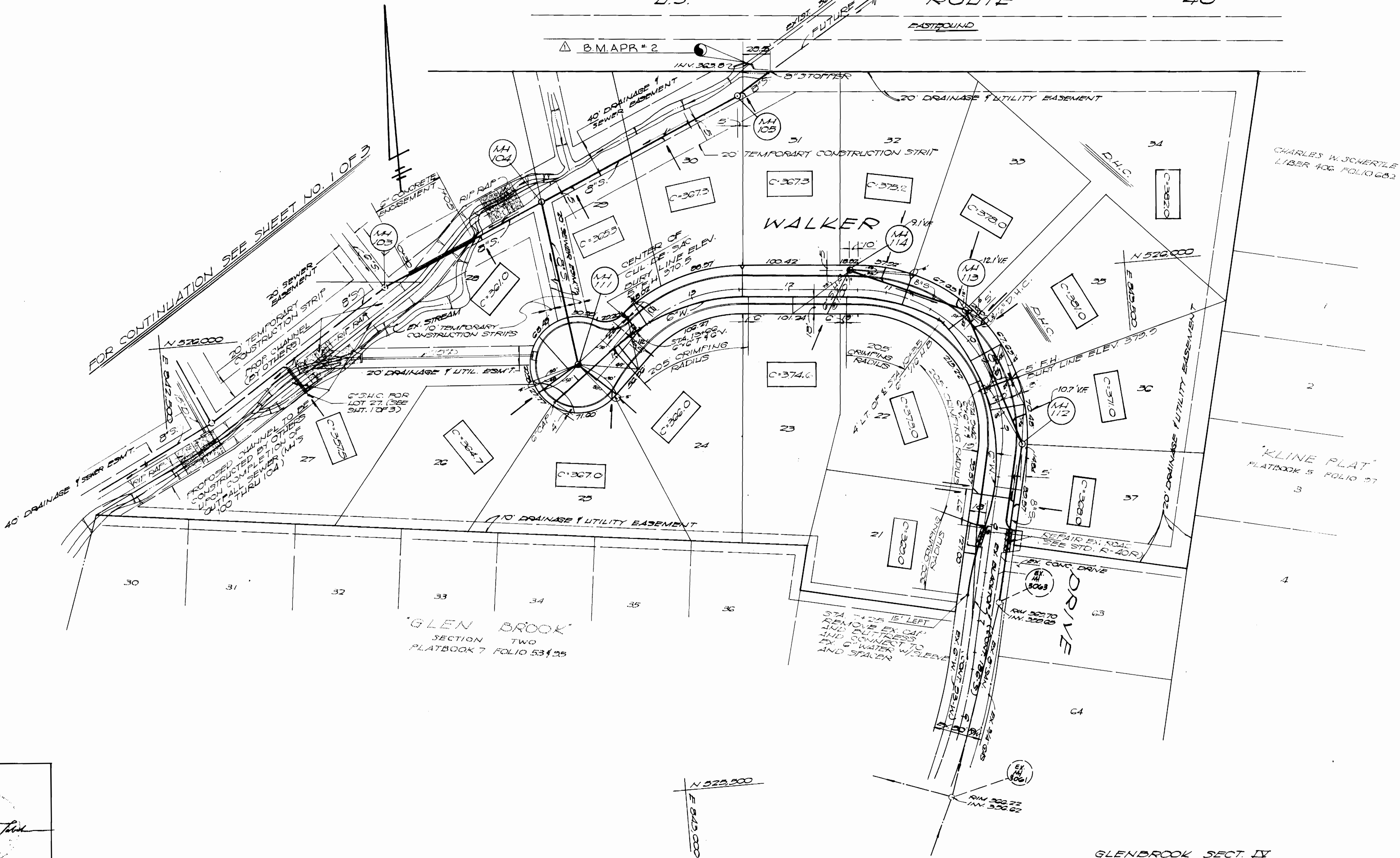
DRAWING NO. 1 OF 3
 SCALE 1"=50'
 DES. BY: W.K.W.
 DRN. BY: W.K.W.
 Ckd. BY: J.R.T.

BENCH MARK APR # 2
 CROSS CUT ON WEST TOP END OF
 HEADWALL ON SOUTH SIDE OF
 U.S. RTE. 40, 750'± WEST OF DOGWOOD RD.
 ELEV. 368.00
 HOWARD CO. DATUM



△ B.M. APR # 2
 INV. 363.87

FOR CONTINUATION SEE SHEET NO. 1 OF 3



Jan R. P...

No.	Date	Revision
1	1-27-76	ADD BENCH MARK

APR ASSOCIATES, INC.
 LAND SURVEYORS AND ENGINEERS
 BALTIMORE, MARYLAND

DEPARTMENT OF PUBLIC WORKS
 HOWARD COUNTY, MARYLAND
 1-14-78
 CHIEF BUREAU OF ENGINEERING

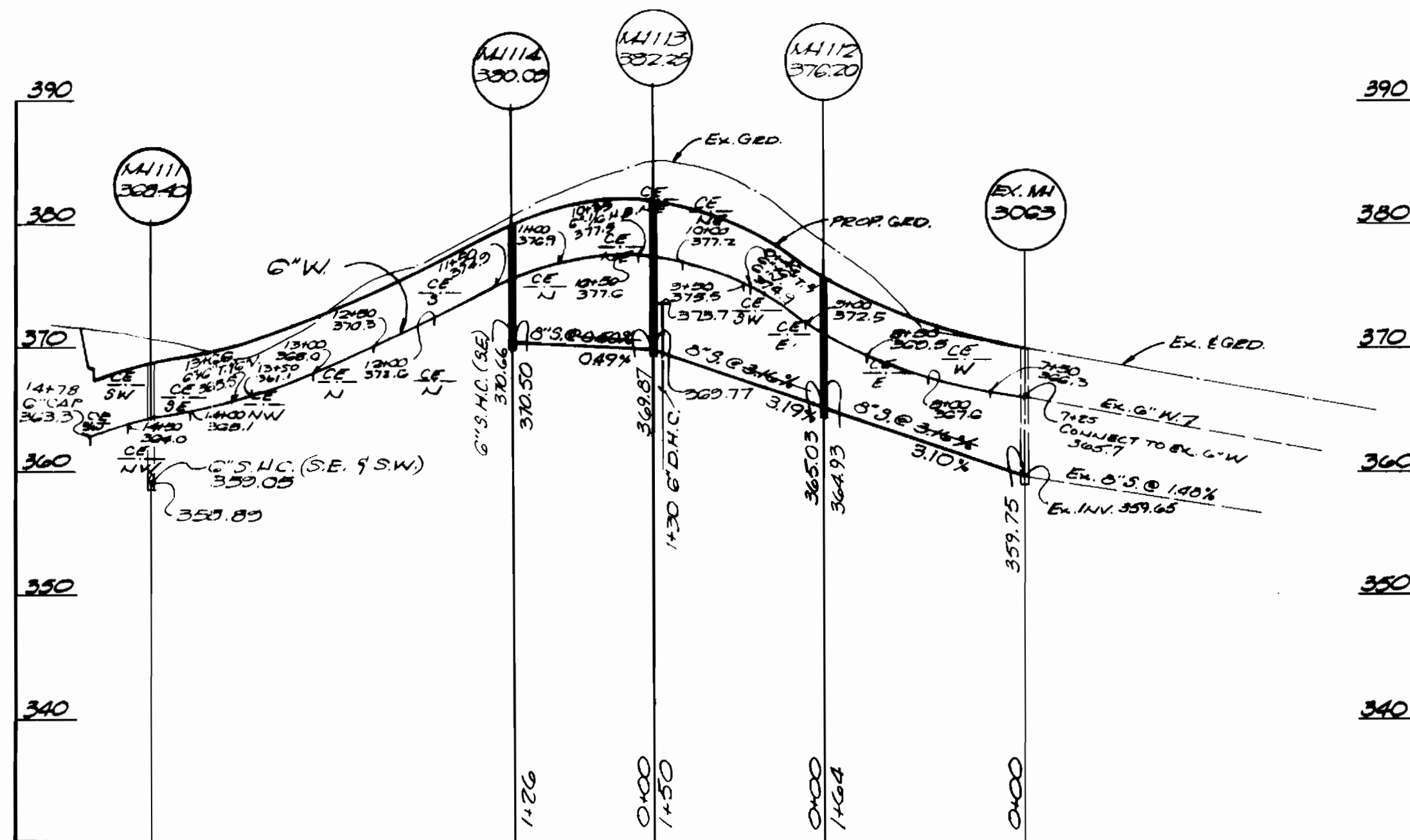
CONTRACT NO. 2770-D-W45

PLAN OF
 WATER AND SEWER MAINS

GLENBROOK SECTION IV
 SECTION 4
 ELECTION DISTRICT NO. 2

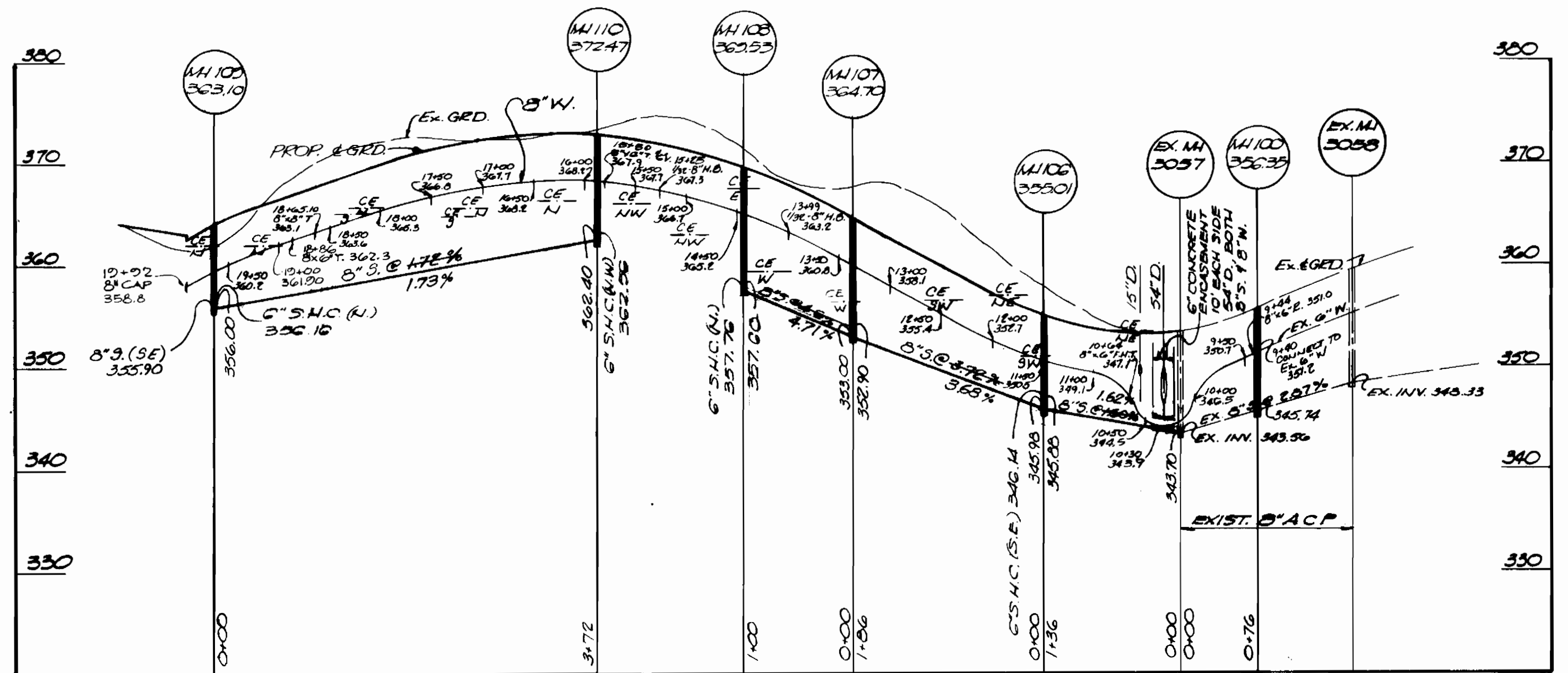
DRAWING NO. 2 OF 3
 SCALE 1"=50'
 DES. BY W.K.W.
 DRN. BY W.K.W.
 CKD. BY J.R.T.

WALKER DRIVE



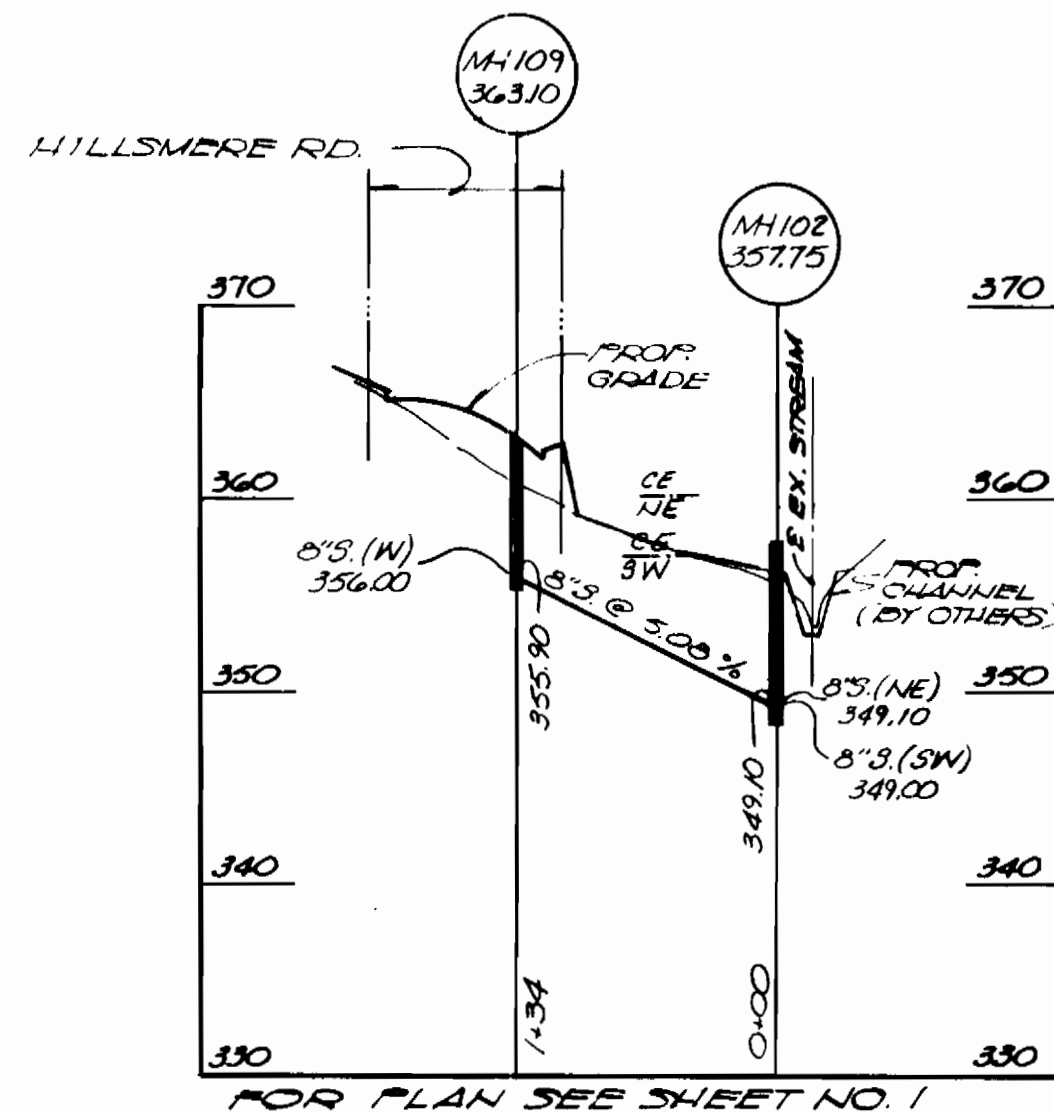
FOR PLAN SEE SHEET NO. 2

HILLSMERE ROAD

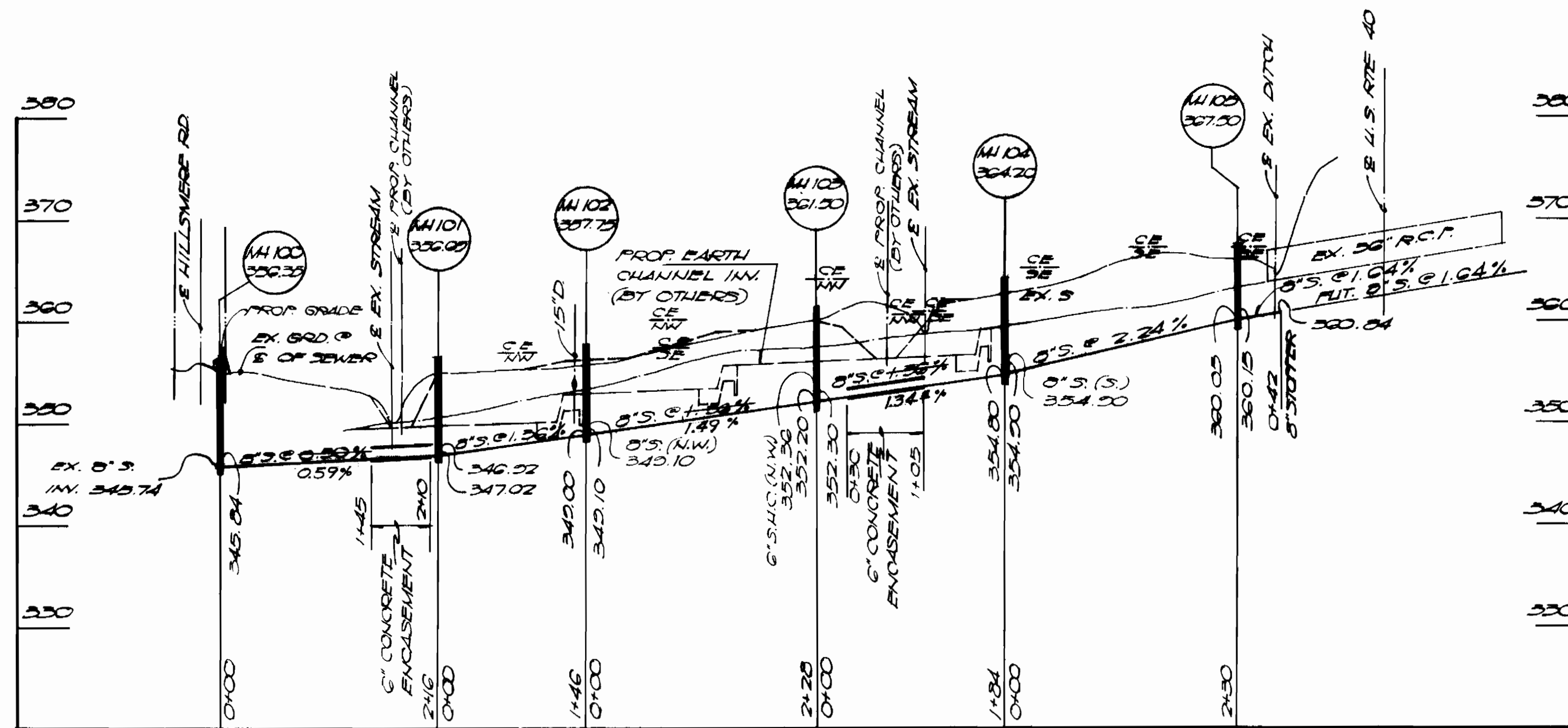


FOR PLAN SEE SHEET NO. 1

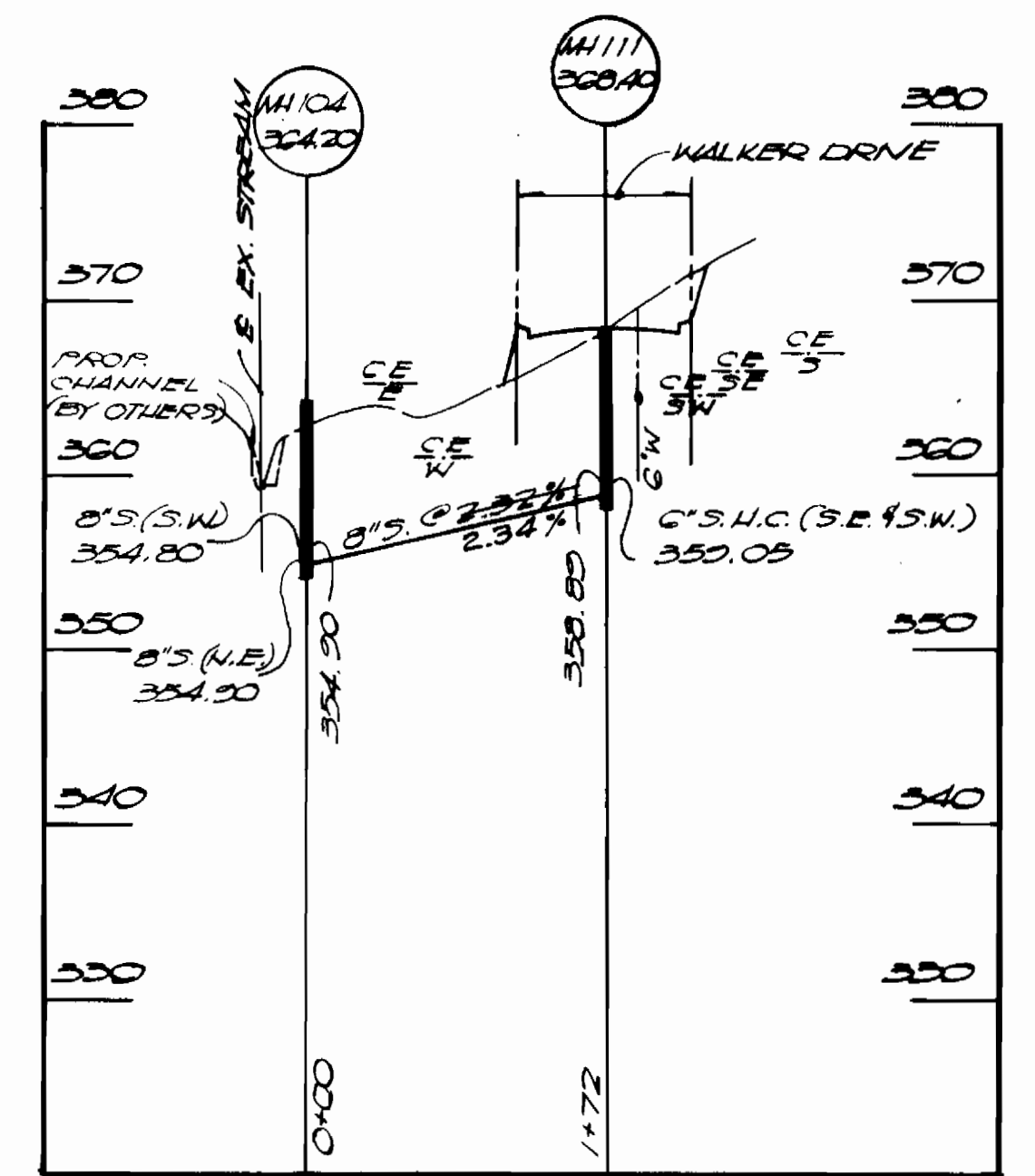
OUTFALL SEWER



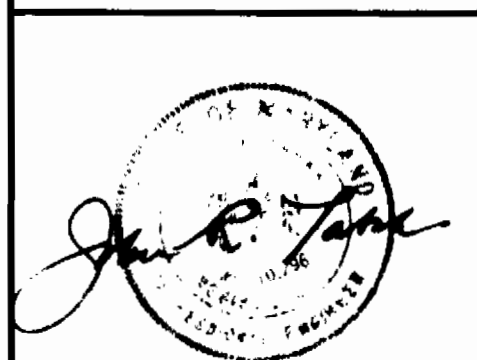
FOR PLAN SEE SHEET NO. 1



FOR PLAN SEE SHEET NO. 1 AND 2



FOR PLAN SEE SHEET NO. 2
GLENBROOK SECT. IV
CONTRACT NO. 2770-D-W4S



APR ASSOCIATES, INC.
LAND SURVEYORS AND ENGINEERS
BALTIMORE, MARYLAND

DEPARTMENT OF PUBLIC WORKS
HOWARD COUNTY, MARYLAND
1-21-78
DIRECTOR OF PUBLIC WORKS DATE

CONTRACT NO. 2770-D-W4S

PROFILE OF
WATER AND SEWER MAINS

GLENBROOK
SECTION 4
ELECTION DISTRICT NO. 2

DRAWING
NO. 3
OF 3
SCALE
VERT. 1"=10'
HORZ. 1"=100'

DES. BY W.K.W.
DRN. BY E.T.
CHK. BY J.R.T.