

LOCATION PLAN
Scale: 1" = 600'

WATER & SEWER CODE
(County use)
SEWER No. 5841600
WATER ZONE
Whitworth - F15
Remainder - F12

GENERAL NOTES

1. Approximate location of existing mains are shown. The Contractor shall take all necessary precautions to protect existing mains and services and maintain uninterrupted supply. Any damage incurred shall be repaired immediately.
2. All pipe elevations shown are invert elevations.
3. The Contractor shall locate existing utilities a minimum of two weeks in advance of construction operations in vicinity of utilities.
4. The Contractor shall notify the following utilities or agencies at least five days before starting work shown on these plans:
Baltimore Gas and Electric Company - Underground Electric Distribution Engineering - 294-5691
Underground Gas Distribution Engineering - 284-5621
Chesapeake and Potomac Telephone Company - 393-5645
Miss Utility - 1-555-0100
5. For all standard details see standards bound in specifications.
6. All horizontal and vertical controls are based on Maryland State Datum.
7. Clear all utilities by a minimum of 6'; clear all poles by a minimum of 7'-0" or tunnel as required.
8. All water mains shall be C.I.P., D.I.P. or A.C.P. unless otherwise noted.
9. All water mains shall have a minimum of 3 1/2' cover.
10. Block all fittings with concrete, see standard bound in specifications.
11. All valves shall be strapped to trees where applicable in accordance with the standard details.
12. All fire hydrants shall be strapped and buttressed in accordance with the standard details. Soil around the fire hydrants shall be compacted in accordance with Section 5-15 of the standard specifications.
13. Payment for strapping fire hydrants and valves will be included in unit price bid for furnishing and laying water mains.
14. Bury Line elevations on fire hydrants shall be set to the elevations shown on the drawings.
15. All W.L.C.'s shall be 3/4" diameter unless otherwise noted.
16. Water services shall be for inside meter setting.
17. All sewer mains shall be C.S.P.X., V.C.P.X. or A.C.P. Class 2400 unless otherwise noted.
18. All manholes shall be 4'-0" inside diameter.
19. The Contractor shall provide a joint in all sewer mains within 2'-0" of exterior manhole walls.
20. Manholes designated 'WT.' in plan and profiles shall have watertight frame and cover.

BENCH MARKS
W.R. & A. B.M.*W-1 Elev. 370.78
Top Flange Bolt Fire Hydrant Intersection Font Hill Drive and Windflower Drive.
W.R. & A. B.M.*W-2 Elev. 378.43
Galvanized Boat Spike Root 36" Tree, 75' NE from Font Hill Drive Sta. 36+25.

QUANTITIES

ITEM	BID	AS-BUILT	MATERIAL/SUPPLIER
8" Sewer	3,130 LF	5,027 LF	CERTAIN TIED CL 2400
Manholes	160 V.F.	1,523 L.F.	ATLANTIC PRE CAST (A-D) LOK
8" Water	1,770 LF	1,770 LF	U.S. PIPE CL 52 D.I.P.
6" Water	1,150 LF	1,150 LF	U.S. PIPE CL 53 D.I.P.
Fire Hydrants	5	5	A.P. SMITH

WHITMAN, REQUARDT & ASSOCIATES
ENGINEERS
1304 ST. PAUL ST.
BALTIMORE, MARYLAND

DEPARTMENT OF PUBLIC WORKS
HOWARD COUNTY, MARYLAND
12-8-77
DIRECTOR OF PUBLIC WORKS - DATE

CONTRACT NO. 2769D-W&S

PLAN OF WATER AND SEWER MAINS

ELECTION DISTRICT ELLICOTT CITY NO. 2

DRAWING NO. 1 OF 3
SCALE AS SHOWN

Font Hill Village
Section 3 Area 2
Contract No. 2769 D-W&S

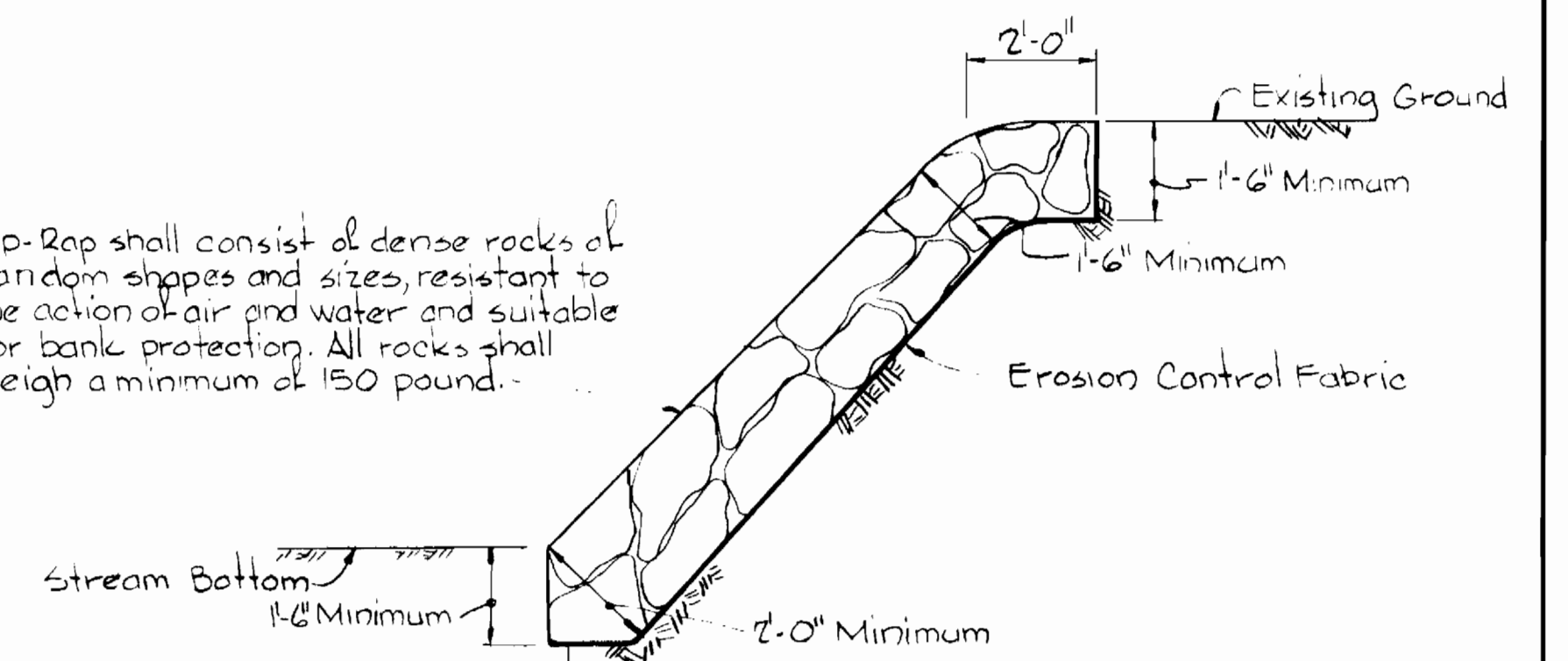
NOVEMBER 30, 1977

As-Built June '78

RIP-RAP NOTES:

1. Erosion Control Fabric shall be Poly Filter - X as manufactured by Carthage Mills, Inc., Erosion Control Division, 124 West 66th Street, Cincinnati, Ohio; Laurel Erosion Control Cloth as manufactured by Laurel Plastic, Inc., Madison, Maine, or approved equal.
2. Rip-Rap shall be placed 6" minimum each side of sewer or as shown.
3. Cost of Rip-Rap shall be included in Unit Price Bid for furnishing and laying Sewer Mains.

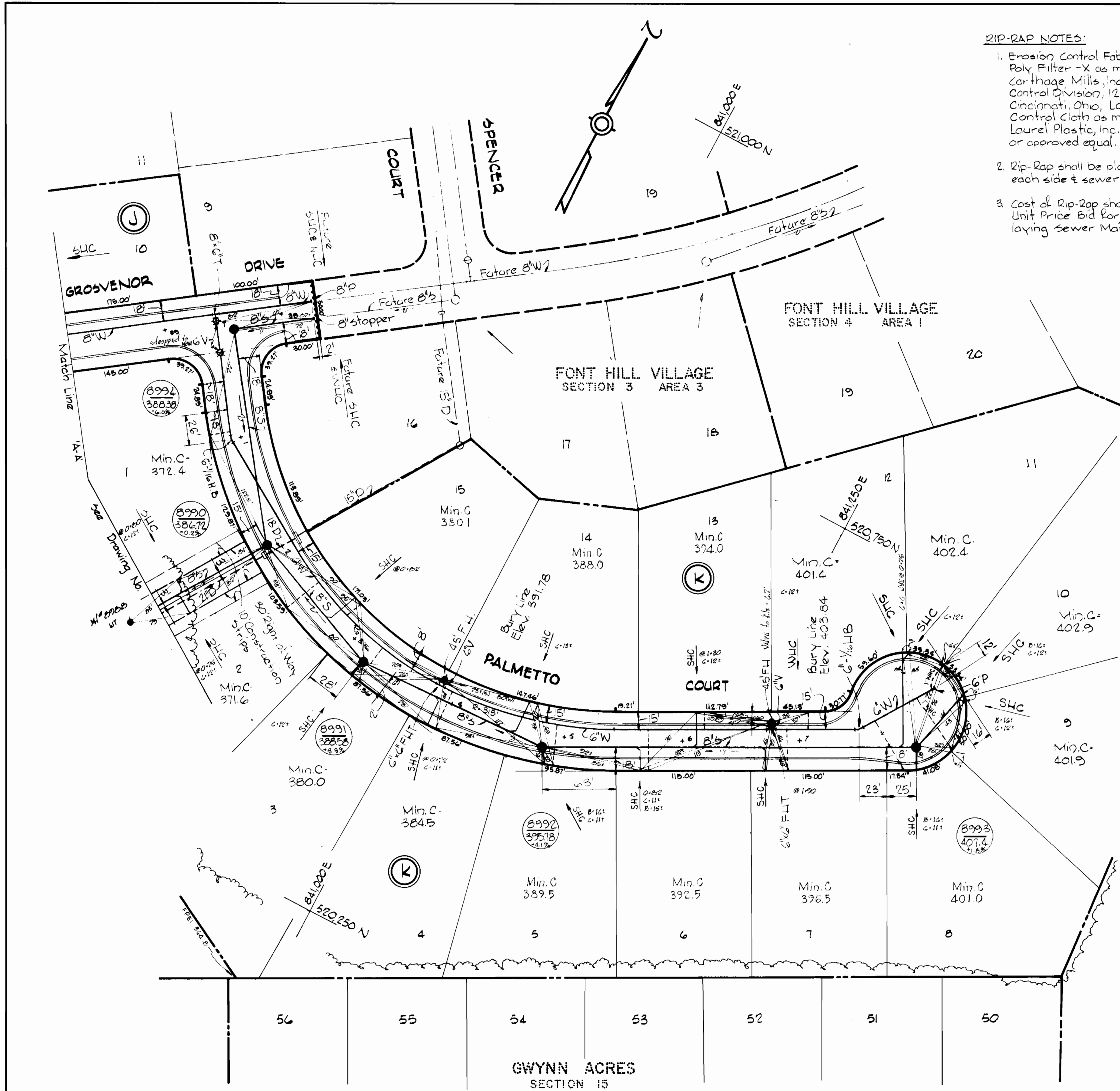
Rip-Rap shall consist of dense rocks of random shapes and sizes, resistant to the action of air and water and suitable for bank protection. All rocks shall weigh a minimum of 150 pounds.



Maintain 1'-0" Minimum clearance between Rip-Rap and top of pipe.

RIP-RAP DETAIL

Scale: 3/8"=1'-0"



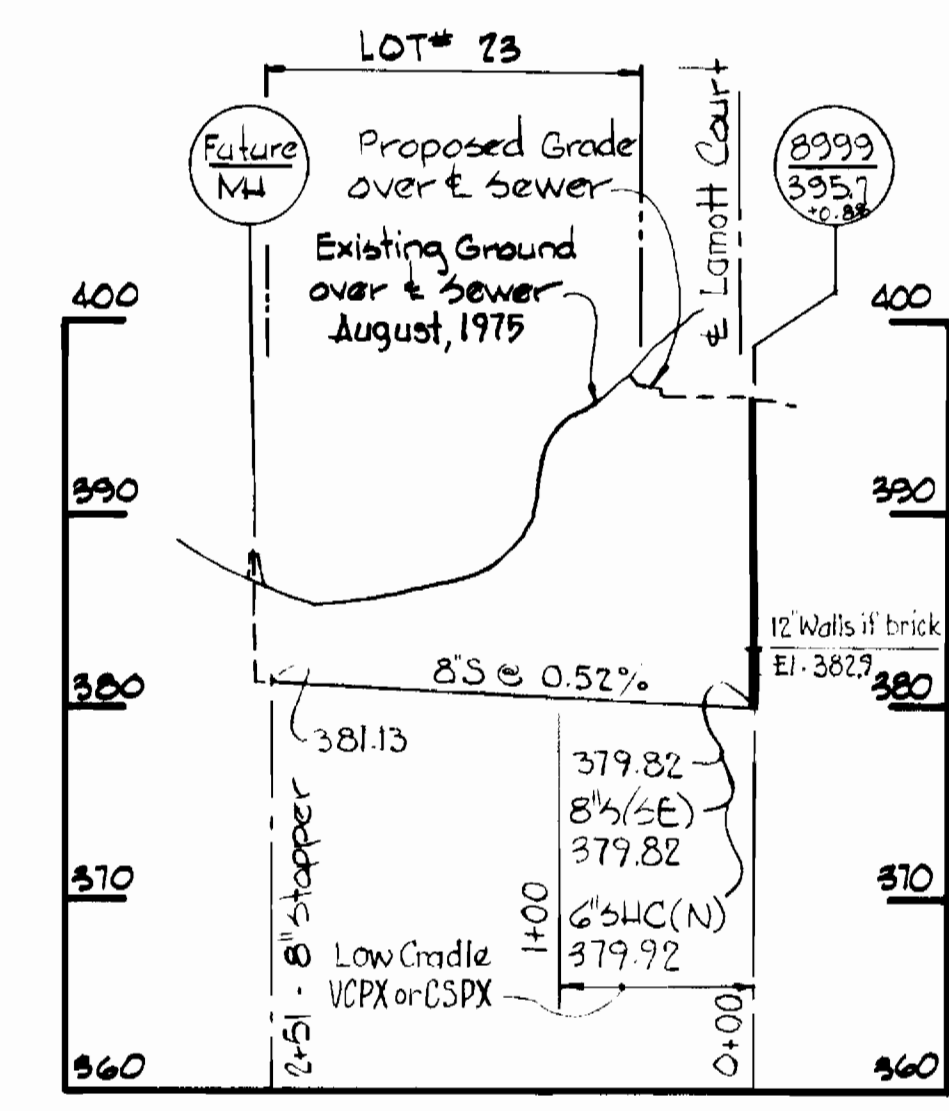
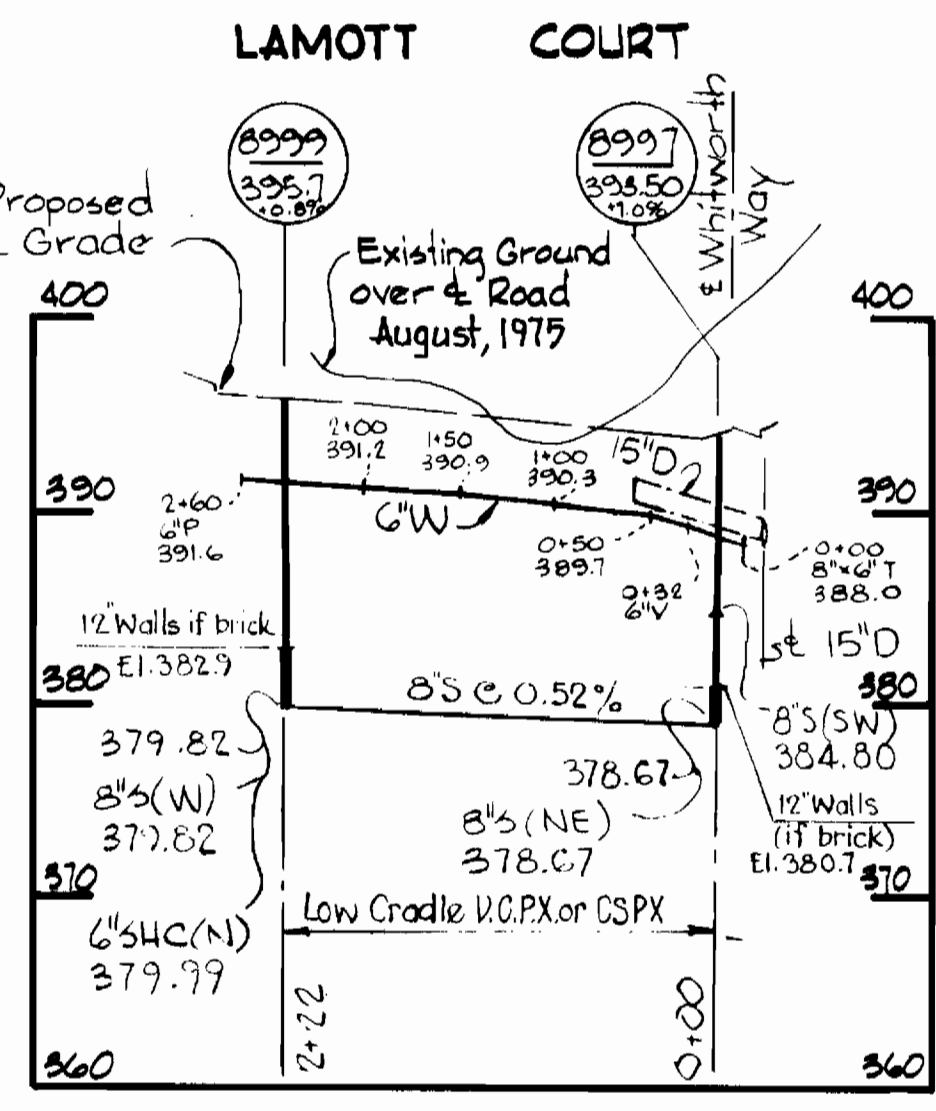
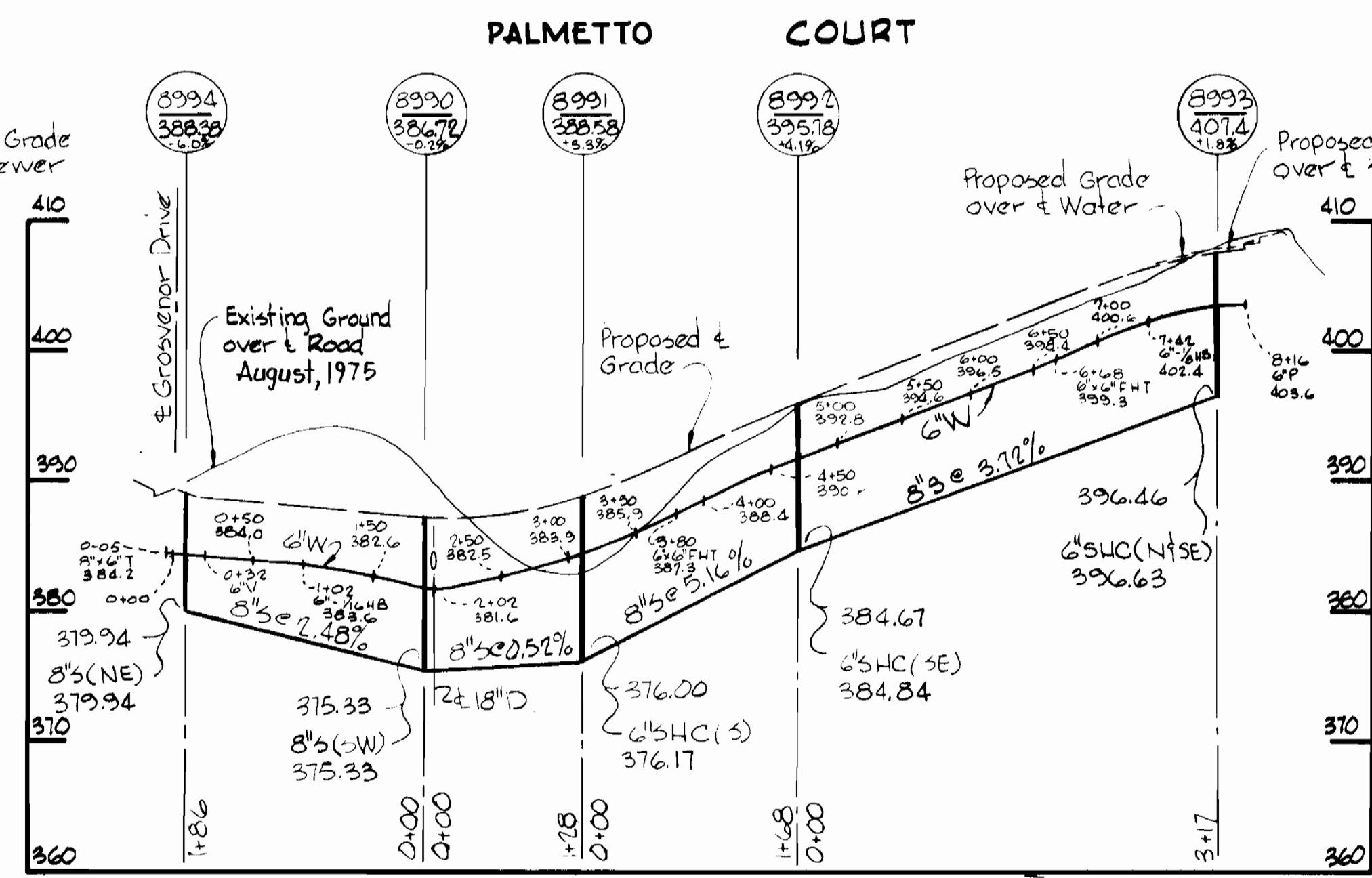
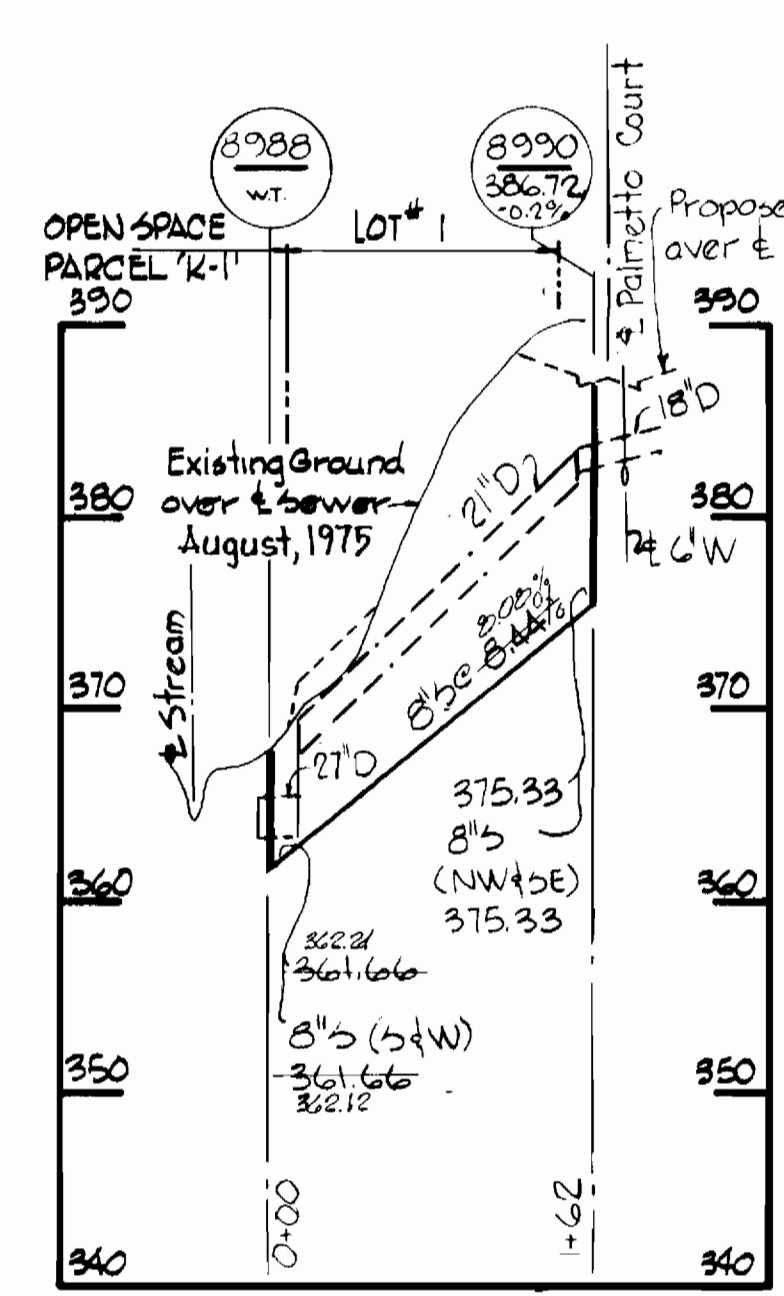
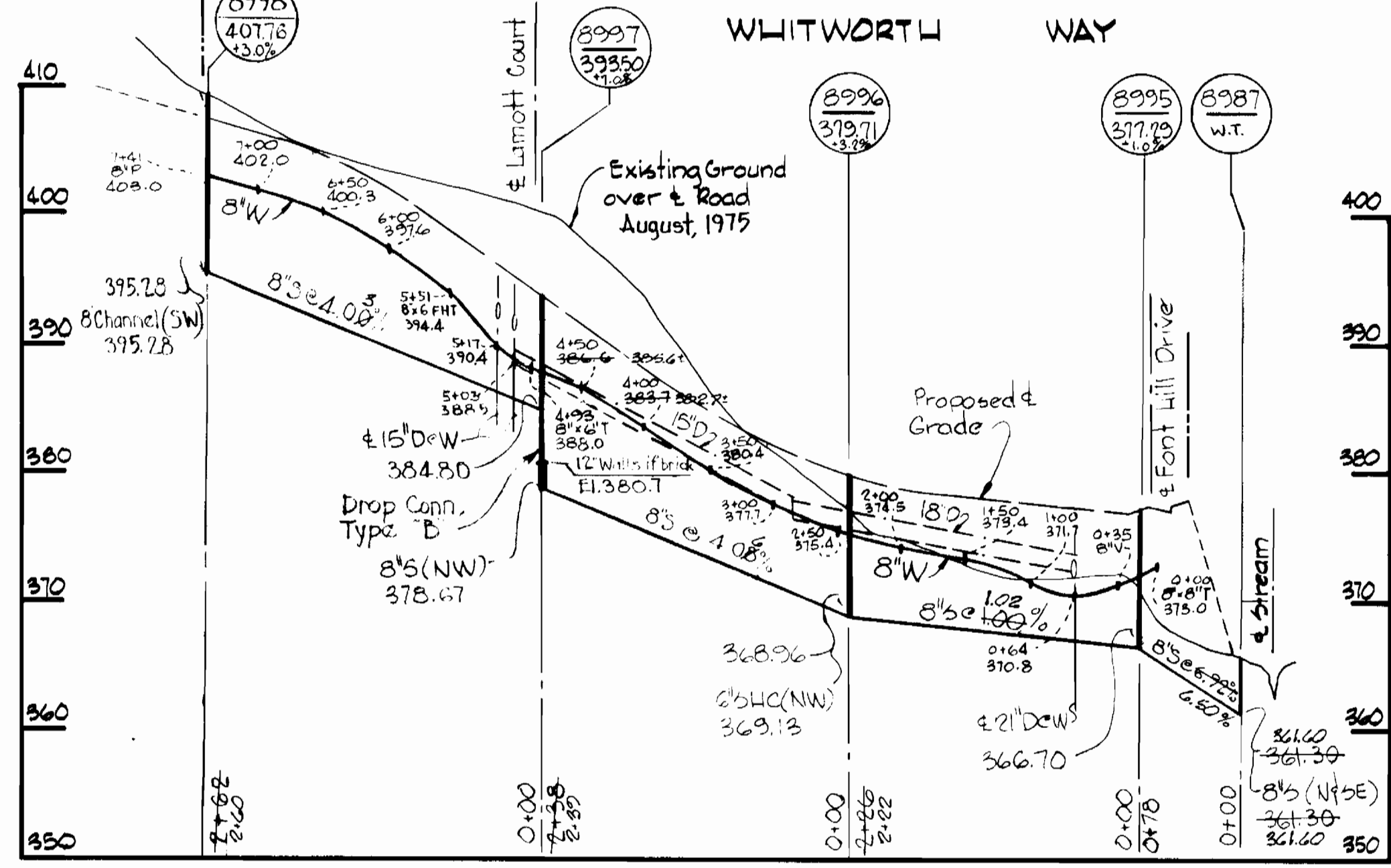
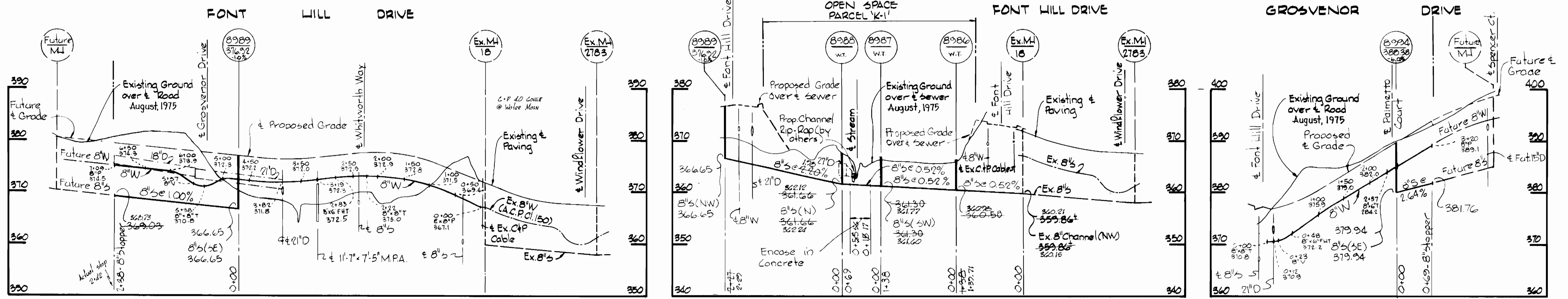
PLAN
Scale: 1"=50'

Note:
C = COVER
B = BOARD



Font Hill Village
Section 3, Area 2
Contract No. 2769D-W&S

<p>WHITMAN, REQUARDT & ASSOCIATES ENGINEERS 1304 ST. PAUL ST. BALTIMORE, MARYLAND</p>	<p>DEPARTMENT OF PUBLIC WORKS HOWARD COUNTY, MARYLAND <i>R.J. Reardon</i> 12-2-77 DIRECTOR OF PUBLIC WORKS - DATE</p>	<p>CONTRACT NO. 2769D-W&S <i>W.O. Felber</i> 12-7-77 CHIEF-BUREAU OF ENGINEERING - DATE</p>	<p>PLAN AND DETAIL OF WATER AND SEWER MAINS</p>	<p>ELECTION DISTRICT ELLCOTT CITY NO. 2</p>	<p>DRAWING NO. 2 OF 3</p>	<p>SCALE AS SHOWN</p>
--	--	--	---	---	--	--




 Kenneth J. Meland
 Font Hill Village
 Section 3 Area 2
 Contract No. 2769 D-W&S

WHITMAN, REARDT & ASSOCIATES
 ENGINEERS
 1304 ST. PAUL ST.
 BALTIMORE, MARYLAND

DEPARTMENT OF PUBLIC WORKS
 HOWARD COUNTY, MARYLAND
 12-2-77
 DIRECTOR OF PUBLIC WORKS - DATE

CONTRACT NO. 2769-D-W&S

PROFILES OF WATER AND SEWER MAINS

ELECTION DISTRICT ELLICOTT CITY NO. 2

DRAWING NO. 3 OF 3
SCALE H: 1"=100' V: 1"=10'