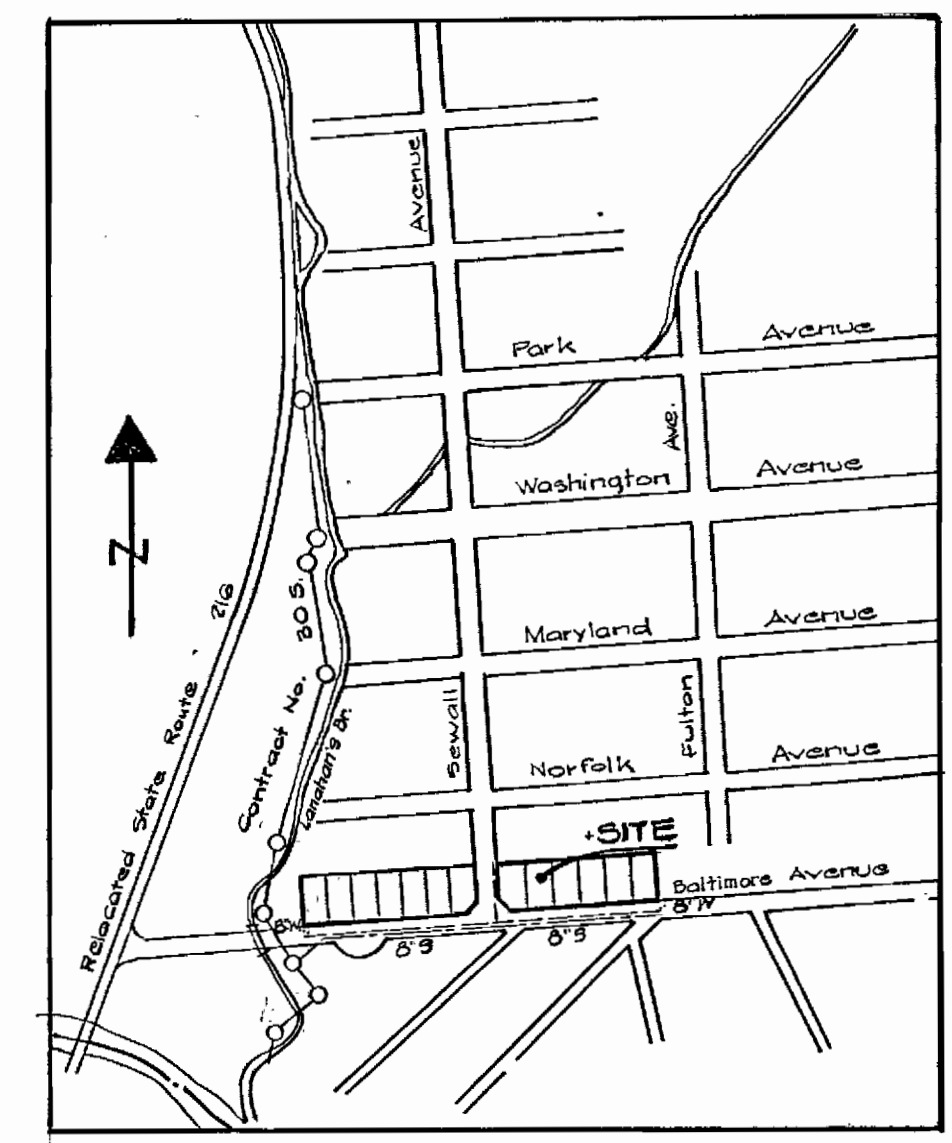
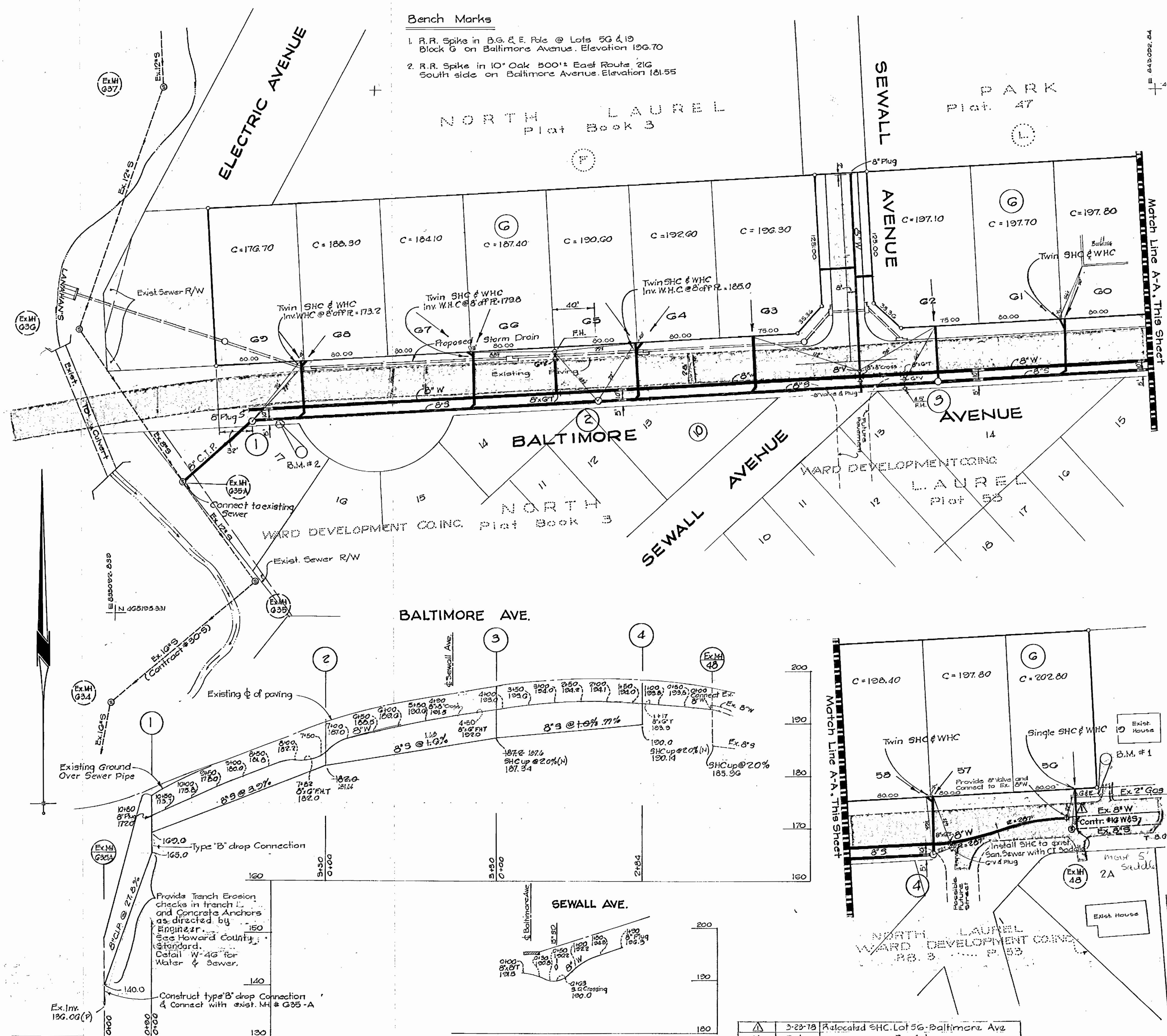
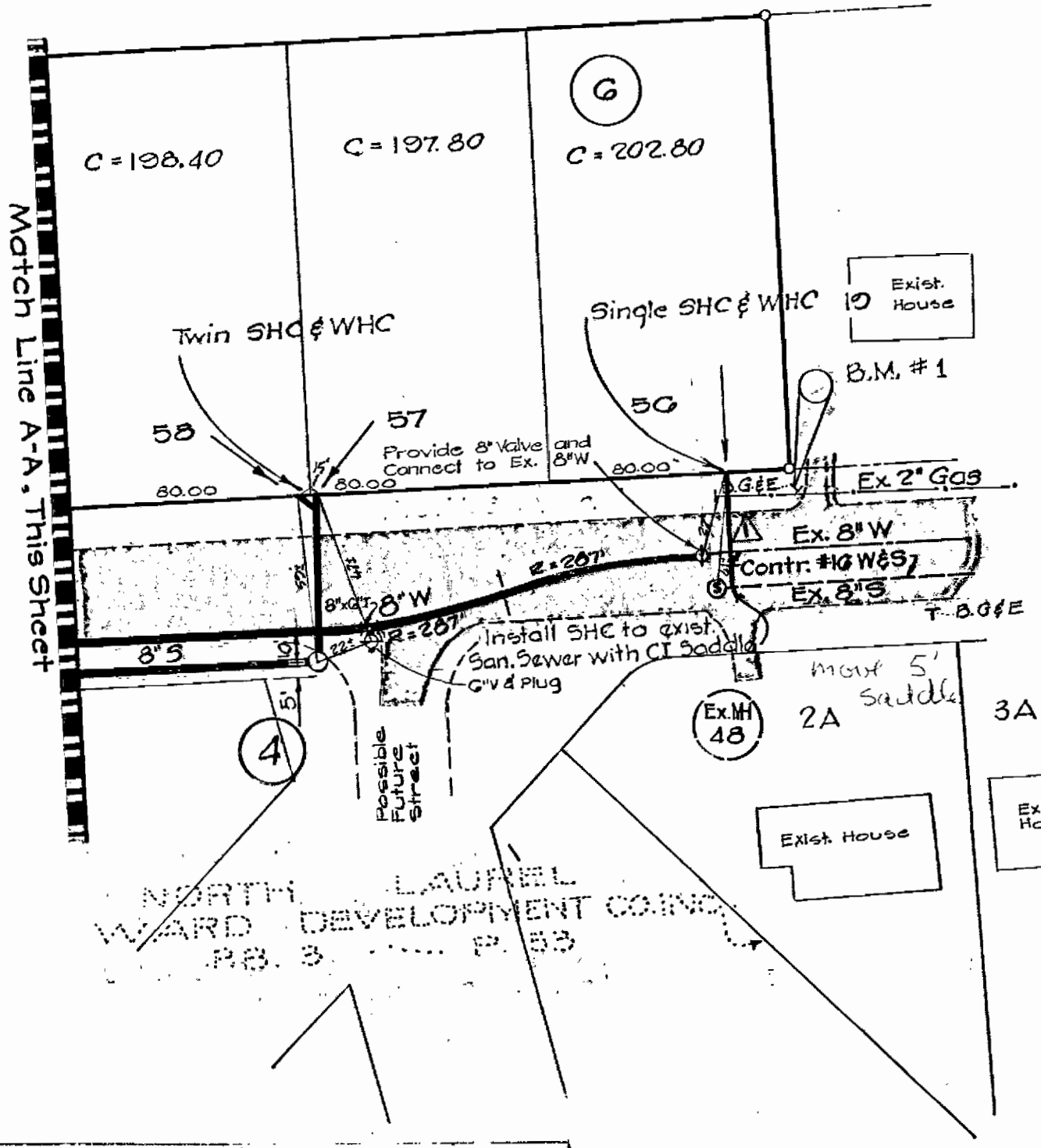


WATER AND SEWER CODE FOR COUNTY USE ONLY
SEWER NO. 11A0400
WATER NO. C03

- Bench Marks**
- R.R. Spike in B.G. & E. Plc @ Lots 5G & 10 Block G on Baltimore Avenue. Elevation 126.70
 - R.R. Spike in 10' Oak 500' East Route 21G South side on Baltimore Avenue. Elevation 121.55



- GENERAL NOTES.**
- All water mains to be C.I.P., D.I.P or A.C.P. unless otherwise shown.
 - Top of all water mains to have a minimum of 3.5' cover unless otherwise noted.
 - All valves shall be strapped to tees in accordance with standard details.
 - Buttress or anchor all fittings with concrete. See standards bound in specifications.
 - Bury line elevations on fire hydrants shall be set to the elevations shown on the plan. Fire hydrants shall be set to the elevations shown on the plan. Fire hydrants shall be set to the elevations shown on the plan. Fire hydrants shall be set to the elevations shown on the plan. Fire hydrants shall be set to the elevations shown on the plan.
 - All sewer mains shall be C.S.P., V.C.P.X., or A.C.P. Class 2400 unless otherwise noted. (Sewer Pipe between Ex.MH.G35-A and MH 1 shall be Cd.)
 - The contractor shall provide a joint in all sewer mains within 2'-0" of exterior manhole wall.
 - All manholes shall be 4'-0" inside diameter, unless otherwise noted.
 - Approximate locations of existing mains are shown. The contractor shall take all necessary precautions to protect existing mains and services and maintain uninterrupted service. Any damage incurred due to the contractor's operation shall be repaired immediately at the contractor's expense.
 - All horizontal and vertical controls are based on Md. State Datum.
 - All pipe elevations shown are invert elevations - (I).
 - For all standard details see standards bound in specifications.
 - Contractor shall locate existing utilities in advance of construction operations in the vicinity of proposed utilities.
 - Contractor shall remove trees, stumps and roots along line of excavation as directed by the Engineer. Payment for such removal shall be included in the unit price bid for excavation and backfill for water and sewer mains.
 - Place regulation 'Men Working' and warning signs as required to comply with Maryland State Highway Administration Manual of Traffic Control for Highway Construction and Maintenance Operations.
 - The contractor shall notify the following utilities or agencies at least five (5) days before starting work shown on these plans:
Baltimore Gas and Electric Company
Underground Electric Distribution Engineering 'Damage Control' - 234-5691
Underground Gas Distribution Engineering - 550-0100
Chesapeake and Potomac Telephone Company 727-9976
Miss. Utilities - 393-3648



ITEM	ESTIMATE	AS BUILT	SUPPLIES
8" Sewer	1034'	930'	J.M. Pipe
8" Water	1240'	1,273'	
Fire Hydrants	2		
Manholes	4		

Contract No. 2758-D-W43
NORTH LAUREL
Water & Sewer Extension

3-23-78 Reallocated SHC Lot 56 Baltimore Ave
No. Date Revision

OYSTER, IMUS AND PETZOLD, INC. CIVIL ENGINEERS • LAND PLANNERS • LAND SURVEYORS 2419 REEDIE DRIVE • WHEATON • MARYLAND • 949-2011	DEPARTMENT OF PUBLIC WORKS HOWARD COUNTY, MARYLAND <i>W. J. Albert</i> DIRECTOR DATE	CONTRACT NO. 2758-D-W43 2-23-78	PLAN OF WATER AND SEWER MAINS	NORTH LAUREL 6TH ELECTION DISTRICT	DRAWING NO. 1	SCALE 1"=50'
					OF 1	

"As-Built" Aug '78