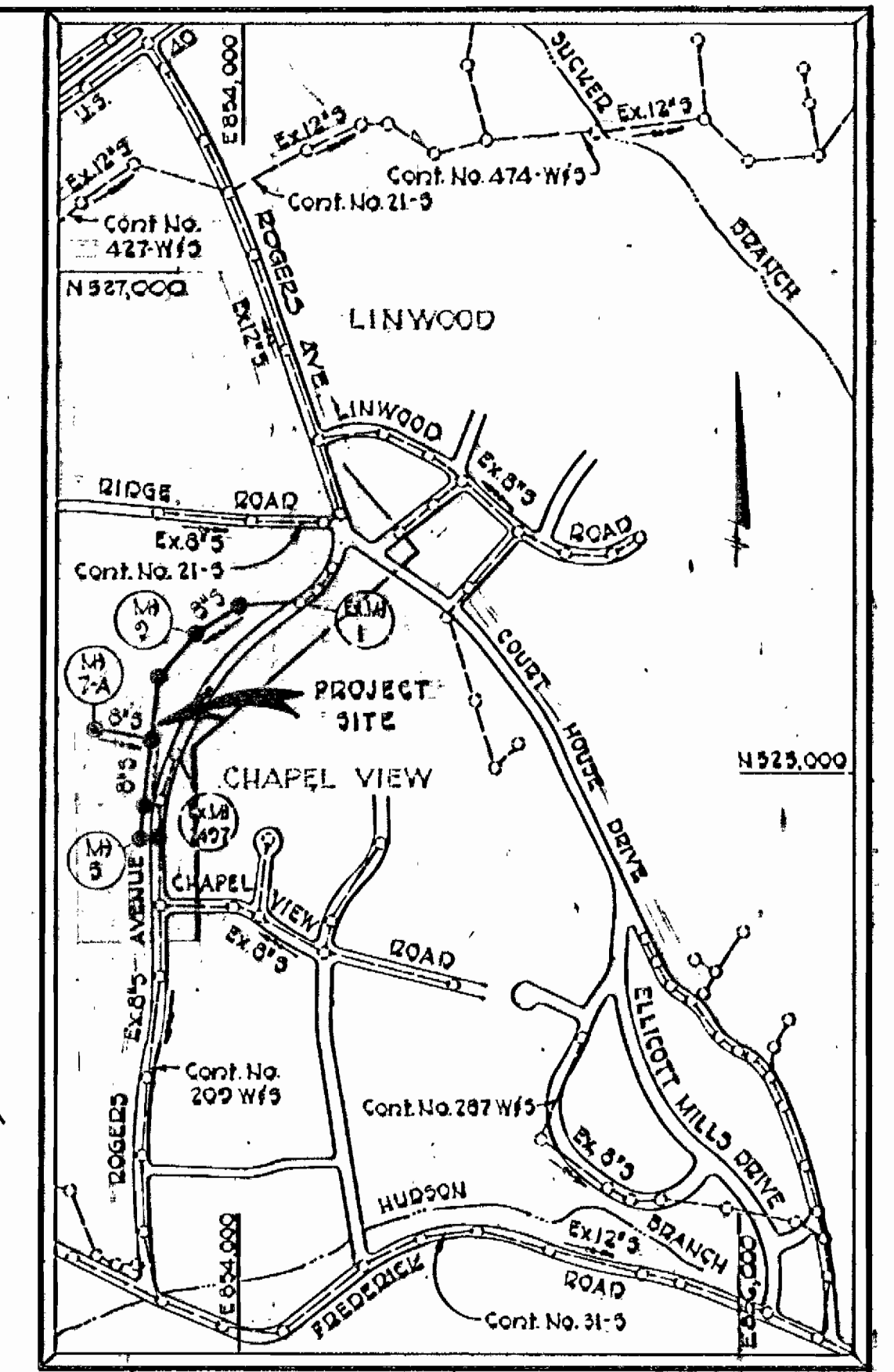
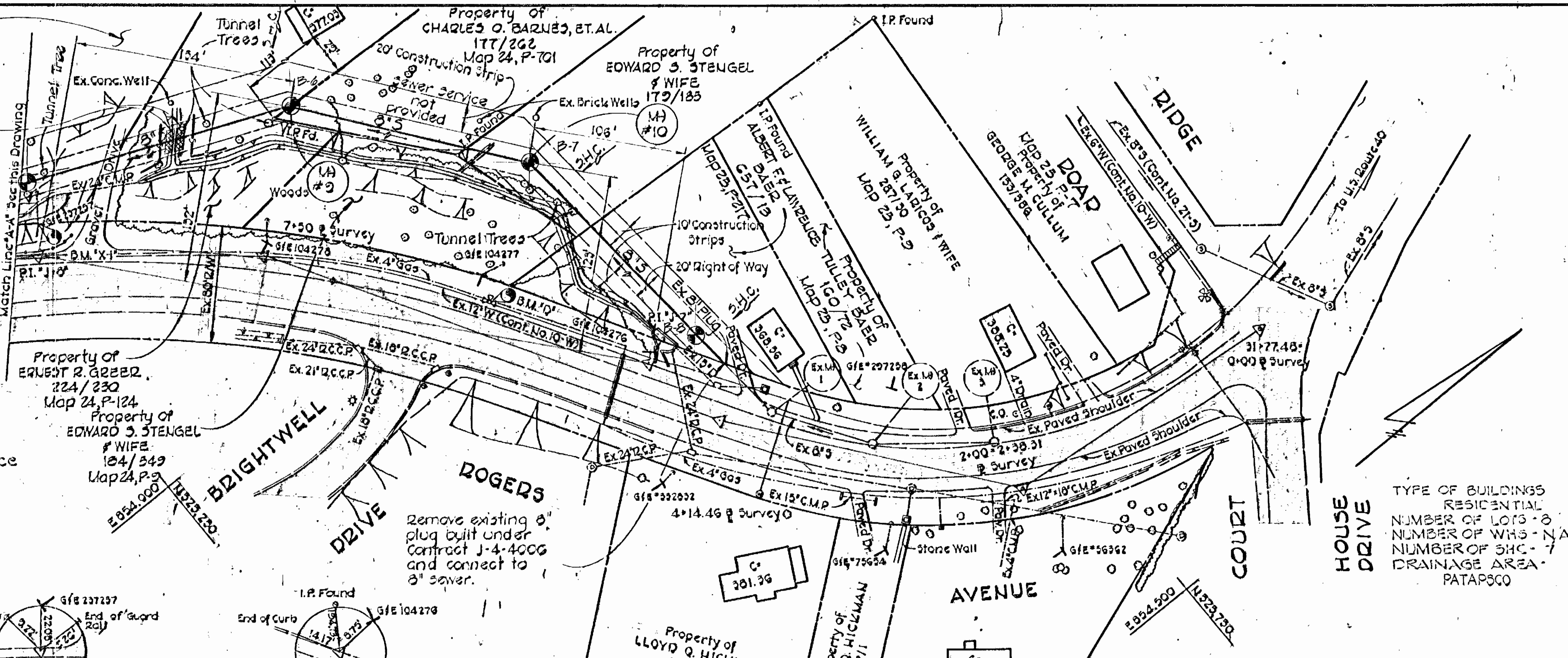


Property of HELEN M. LITCHFIELD 127/235 Map 24, P-123

Loose Laid Riprap over Erosion Control Fabric See Detail Drawing No. 2



WATER & SEWER CODES  
WATER - N/A  
SEWER NO. 1402100

VICINITY MAP  
SCALE: 1" = 600'

CONTRACT NO. 754-S  
CAPITAL PROJECT NO. S-7-6087  
**ROGERS AVENUE SEWER MAIN  
PHASE II**

GENERAL NOTES

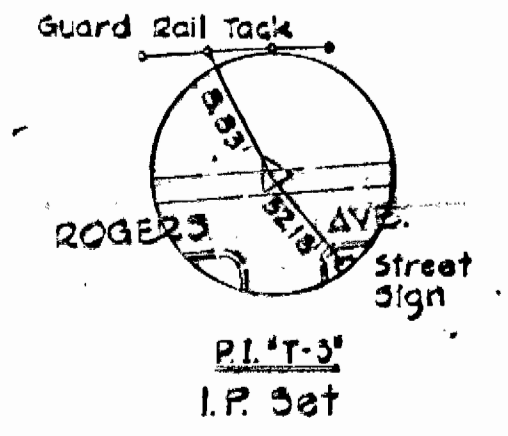
1. Approximate locations of existing utilities are shown. The Contractor shall take all necessary precautions to protect existing utilities and maintain uninterrupted service. Any damage incurred shall be repaired immediately to the satisfaction of the Engineer by the Contractor at the Contractor's expense.
2. All pipe elevations shown are  $\ominus$  invert elevations.
3. The Contractor shall locate existing utilities a minimum of two weeks in advance of construction operations in the vicinity of sewers at his own expense.
4. For materials, construction methods, and details not shown on the construction drawings, use Howard County "Standard Specifications and Details for Construction".
5. Clear all utilities by a minimum of 6". Clear all utility poles by 2'-0" minimum or tunnel as required. Any costs incurred to the Contractor for tunneling or bracing at poles shall be included in the unit prices bid for construction of the sewer mains.
6. Contractor shall notify the following utilities or agencies at least five (5) days before starting work shown on these plans:  
Baltimore Gas & Electric Company - Underground Gas & Electric Distribution Engineering "Damage Control" - 685-0123  
Bureau of Utilities - 992-2366  
Engineering "Damage Control" - 234-5621  
Chesapeake and Potomac Telephone Company - 726-4476  
Also Utility 1-559-0100.
7. Place regulation "Man working" and warning signs as required to comply with Maryland State Highway Administration Manual of Traffic Control for Highway Construction and Maintenance Operations.
8. All sewer mains shall be C.S.P.C., V.C.P.C., or A.C.P. Class 2400 unless otherwise noted.
9. The Contractor shall provide a joint in each sewer main within 2'-0" of exterior manhole walls.
10. All manholes shall be 48" inside diameter, unless otherwise noted.
11. Horizontal controls are based on the Maryland State Grid Coordinate System.

**SEDIMENT CONTROL NOTES**  
1. Sediment control will be done in accordance with these drawings and Article 13 of the Hg. Co. Specification.  
2. Spoil from trench excavation will be placed on the uphill side of the trench.

Lump Sum Item No. A-10  
Build Manhole No. 4 over and connect to existing 8" sewer built under Contract 209-S. Form channel to meet field conditions.

**BENCH MARKS**

B.M. #1	11/11/82	Elav. 369.87
cut to Pipe Hydrant Coll. 11' southwest of P.I. #1-1' along Rogers Avenue		
B.M. #2-1	11/11/82	Elav. 372.43
Railroad spike in S & E Pole #237257 22' Northeast of P.I. #1-1'		
B.M. #2-2	11/11/82	Elav. 371.43
Railroad spike in S & E Pole #104281 45' Northeast of P.I. #1-1'		
B.M. #2-3	11/11/82	Elav. 311.55
Roadside Bonnet Bolt of Pipe Hydrant #1162 Northeast of P.I. #1-1'		



HOWARD SOIL CONSERVATION DISTRICT  
REVIEWED FOR HOWARD SOIL CONSERVATION DISTRICT AND MEETS TECHNICAL REQUIREMENTS.  
DATE: 7-11-82  
DATE: 5/12/82  
DATE: 7/12/82

**QUANTITIES**

Item	Estimated	As-Built	Manuf./Material
8" Sewer	1337 L.F.		
Manholes	3 Each		
6" Sewer	122 L.F.		

CONTRACT NO. 754-S  
CAPITAL PROJECT NO. S-7-6087 PHASE II  
ROGERS AVENUE SEWER MAIN  
BRIGHTWELL DRIVE TO CHAPEL VIEW ROAD

**PURDUM & JESCHKE**  
ENGINEERS  
1023 N. CALVERT ST.  
BALTIMORE, MARYLAND

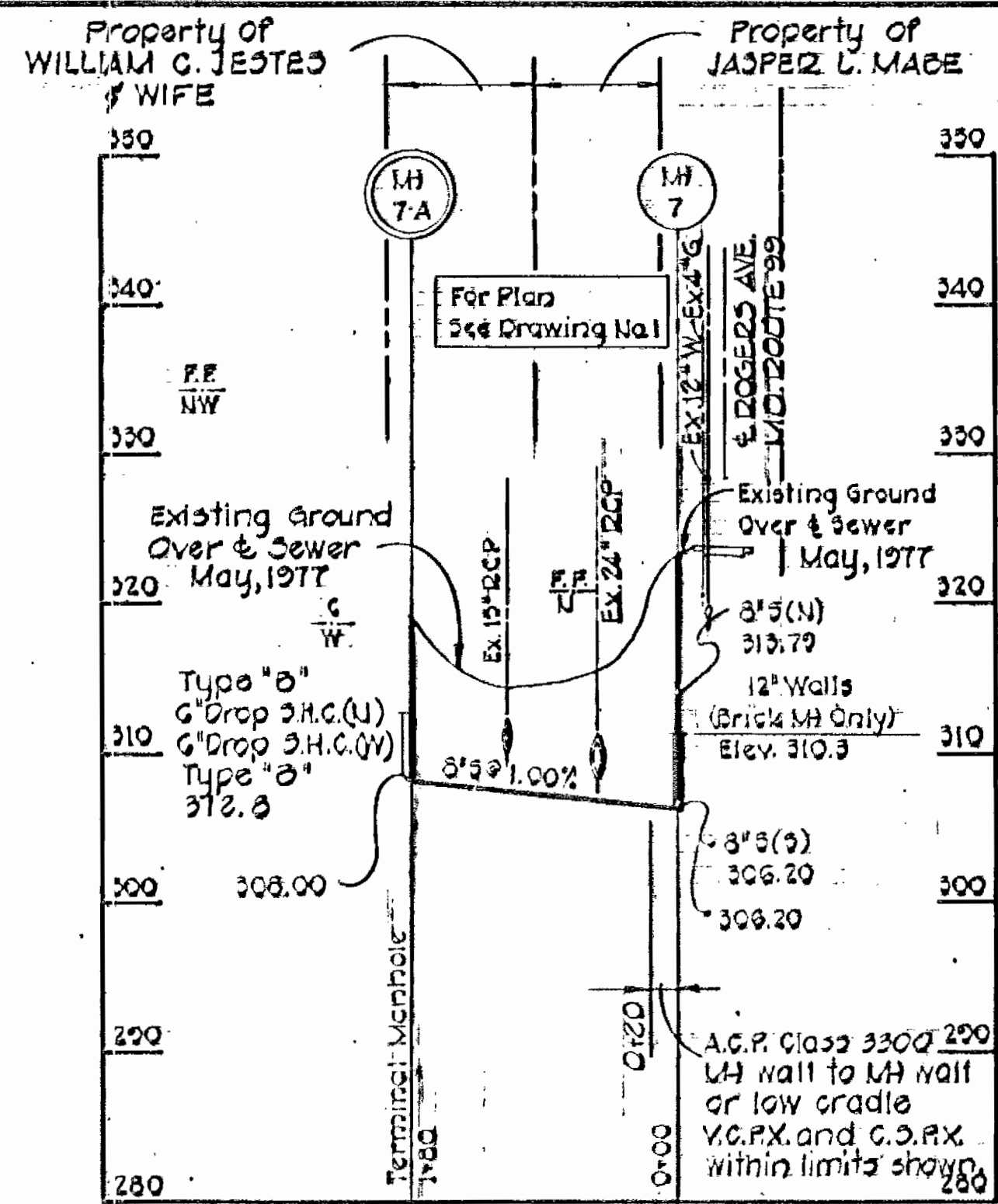
**DEPARTMENT OF PUBLIC WORKS**  
HOWARD COUNTY, MARYLAND  
DATE: 5/12/82  
DATE: 5/12/82

CONTRACT NO. 754-S  
CAPITAL PROJECT NO. S-7-6087

PLAN  
SEWER MAIN

ROGERS AVENUE SEWER MAIN  
BRIGHTWELL DRIVE TO CHAPEL VIEW ROAD  
SECOND ELECTION DISTRICT  
HOWARD COUNTY, MARYLAND

DRAWING NO. 1 OF 2  
SCALE 1" = 50'  
Designed: RDB  
Drawn: ARZ  
Checked: REP

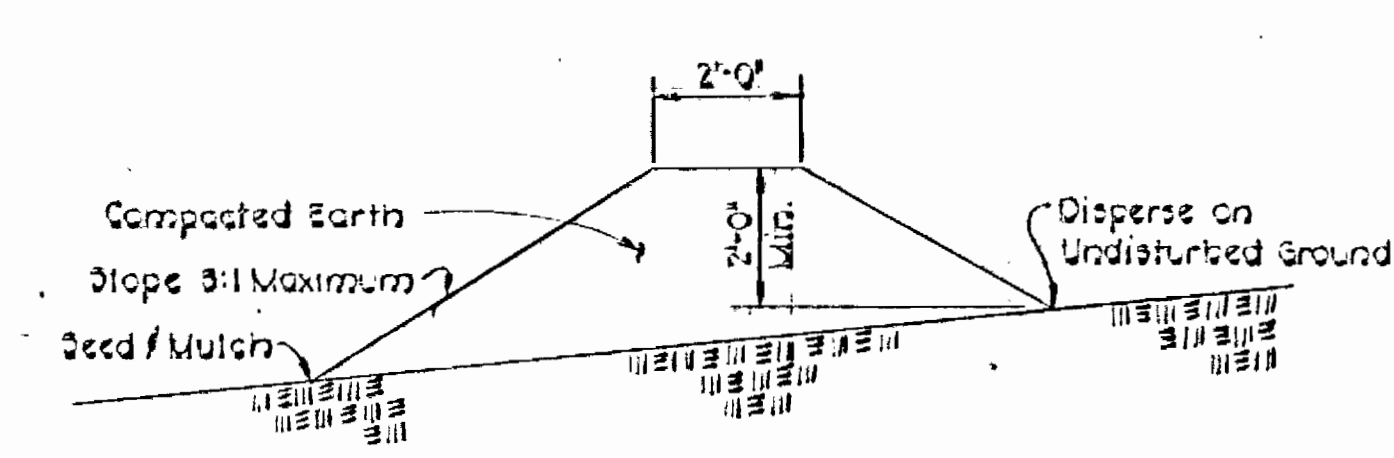


**PROFILE**

Scale: 1"=100' Hor.  
1"=10' Vert.

**GENERAL NOTES CONT'D**

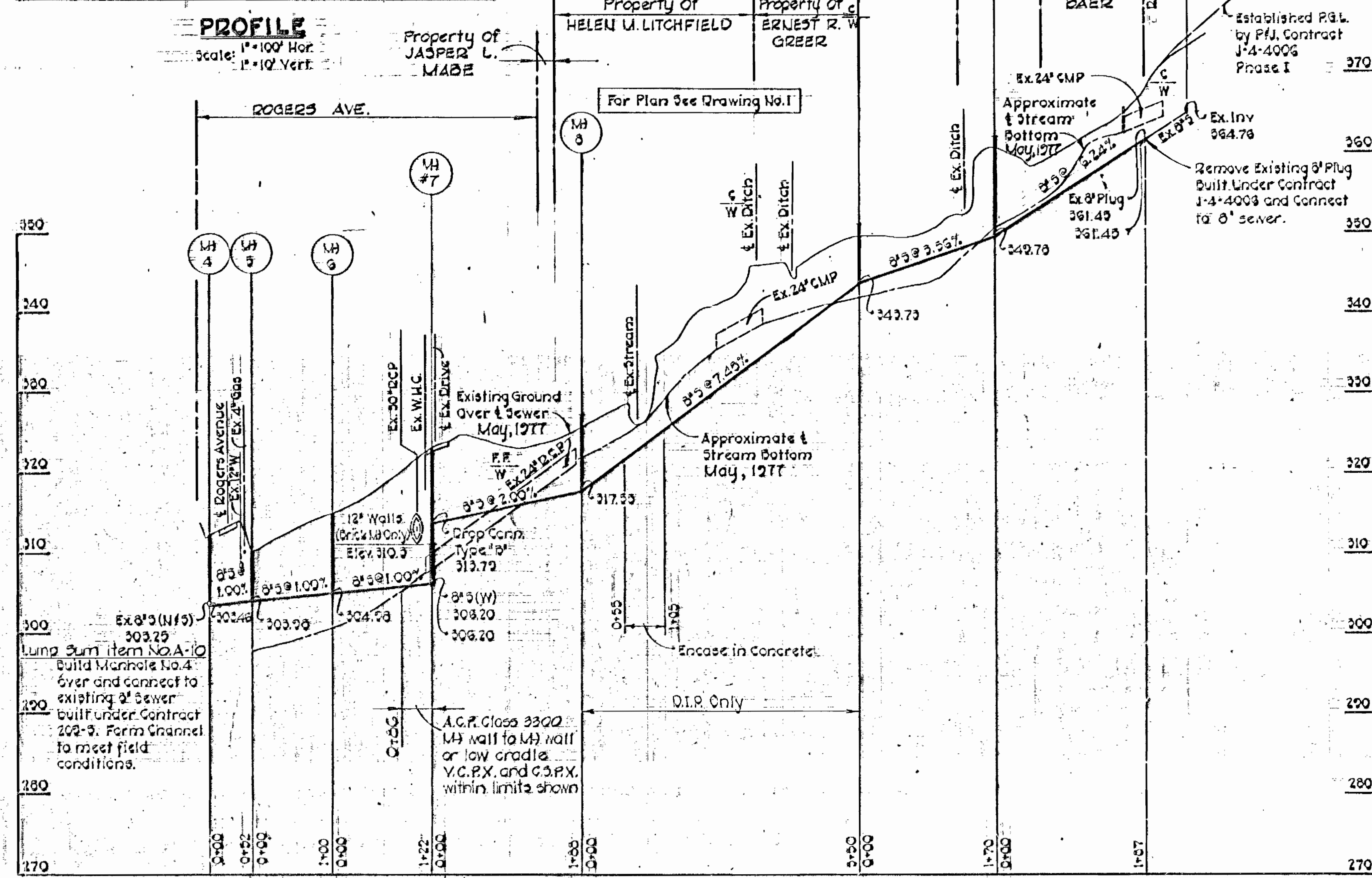
- 12. All vertical controls are based on U.S.G.S. Datum.
- 13. Trees are to be protected from damage to maximum extent. Trees located within the construction strip are not to be removed or damaged by the contractor.
- 14. Contractor shall remove trees, stumps and roots along line of excavation as directed by the Engineer. Payment for such removal shall be included in the unit price bid for construction of the main.



**TEMPORARY EARTH DIVERSION BERM**

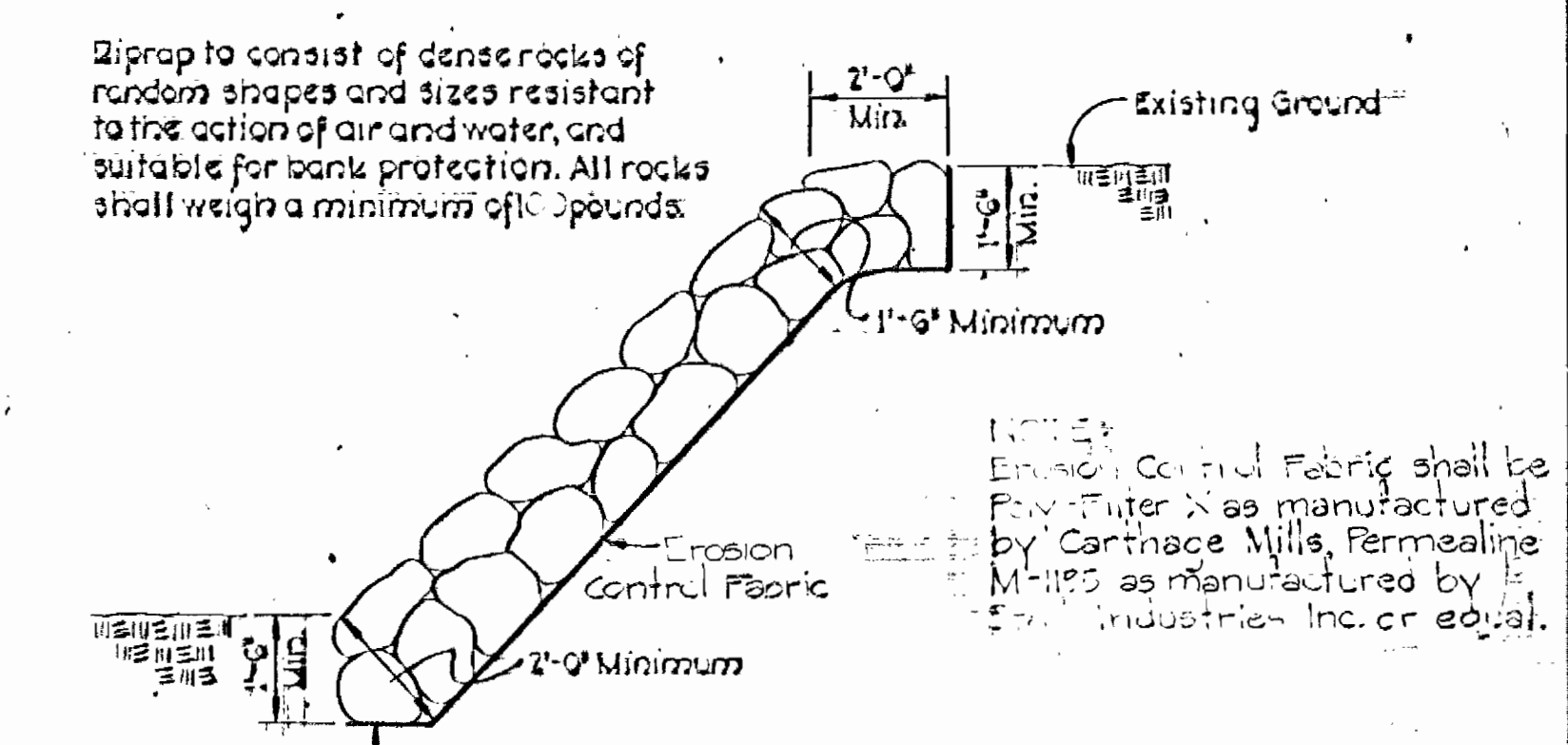
No Scale

Diversion berms are required every 230 feet on continuous slopes of 4% or greater. The berms shall conform to the typical section shown hereon and shall be constructed across the construction areas immediately after the backfilling of the pipe trench and prior to placing stabilization in order to prevent erosion of the backfilled areas.



**PROFILE**

Scale: 1"=100' Hor.  
1"=10' Vert.



**UNGRADED RIPRAP DETAIL**

Scale: 3/4"=1'-0"

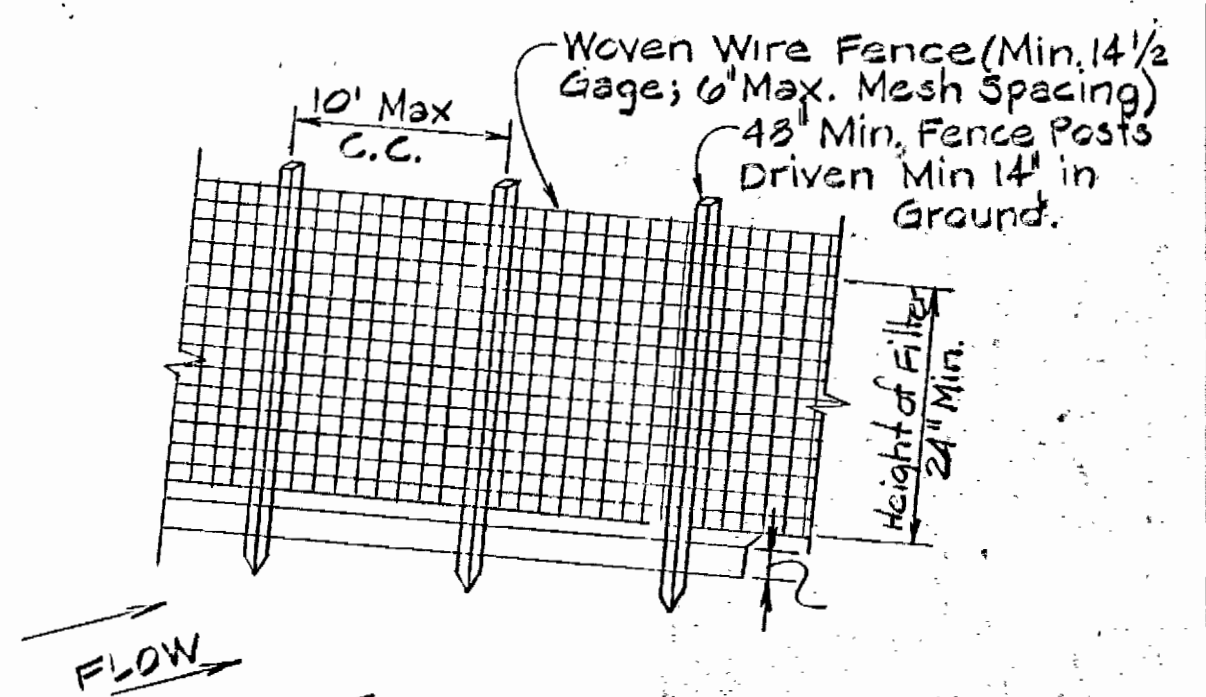
Riprap to consist of dense rocks of random shapes and sizes resistant to the action of air and water, and suitable for bank protection. All rocks shall weigh a minimum of 10 pounds.

NOTES: Erosion Control Fabric shall be Poly Filter X as manufactured by Carthage Mills, Fermealine M-1125 as manufactured by Ferrel Industries Inc. or equal.

Maintain 1'-0" minimum clearance between Riprap and top of pipe.

**CONSTRUCTION NOTES**

- 1. Woven wire fence to be fastened securely to Fence Posts with wire ties or staples.
- 2. Filter Cloth to be fastened securely to woven wire fence with wire ties spaced every 24" at top and mid section.



**SILT FENCE DETAIL**

Not to Scale

POSTS: steel either T or U Type or 2" Hardwood  
 FENCE: Woven Wire, 14 1/2 Ga. Max. 6" Mesh opening  
 FILTER CLOTH: FILTER X MIRAFL 100X, LAUREL EROSION CONTROL CLOTH, BIDIM, POLYFILTER X, or Equal.

CONTRACT NO. 754-S  
 CAPITAL PROJECT S-7-6087 PHASE II  
 ROGERS AVENUE SEWER MAIN  
 BRIGHTWELL DRIVE TO CHAPEL VIEW ROAD

**PURDUM & JESCHKE**  
 ENGINEERS  
 1023 N. CALVERT ST.  
 BALTIMORE, MARYLAND

**DEPARTMENT OF PUBLIC WORKS**  
 HOWARD COUNTY, MARYLAND  
 Robert M. Brown 5/13/92  
 CHIEF - BUREAU OF UTILITIES DATE

CONTRACT NO. 754-S  
 CAPITAL PROJECT NO. S-7-6087

**PROFILES AND DETAILS**  
 SEWER MAIN

**ROGERS AVENUE SEWER MAIN**  
 BRIGHTWELL DRIVE TO CHAPEL VIEW ROAD  
 SECOND ELECTION DISTRICT  
 HOWARD COUNTY, MARYLAND

**DRAWING**  
 NO. 2  
 OF 2

SCALE  
 As Shown

Designed: RDE  
 Drawn: ARZ  
 Checked: REP