

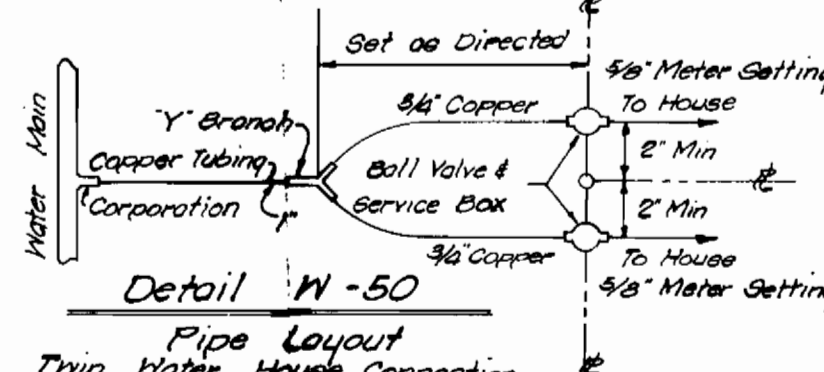
For County Use
Water No. = C05
Sewer No. = 7102400

VICINITY MAP Scale 1"=600'

BOARD OF EDUCATION
HOWARD COUNTY
L.391 F.419
R-A-1 ZONING
P.762

MH No	Bearing	Distance
MH 27		
MH 26	S.38°01'20"W	223.74'
MH 26		
MH 25	S.25°15'56"W	98.82'
MH 25		
MH 24	S.01°59'54"W	37.80'
MH 25		
MH 25	N.60°38'40"W	101.14'
MH 23		
MH 23		
MH 22	N.35°28'40"W	128.00'
MH 21		
MH 21	S.40°37'56"W	90.45'
MH 20		
MH 20	S.10°00'24"W	90.52'
MH 19		
MH 19	S.25°28'45"E	110.95'
MH 18		
MH 18	S.18°21'26"W	203.77'
MH 17		
MH 17	S.35°28'40"E	110.43'
MH 16		
MH 22	Connect to Exist. Contract #2571-D-W45	218.00'
Ex. MH 8	Connect to Exist. Contract #2571-D-W45	168.00'
MH 16	Connect to Exist. Contract #2571-D-W45	168.00'
Ex. MH 13	Connect to Exist. Contract #2571-D-W45	168.00'

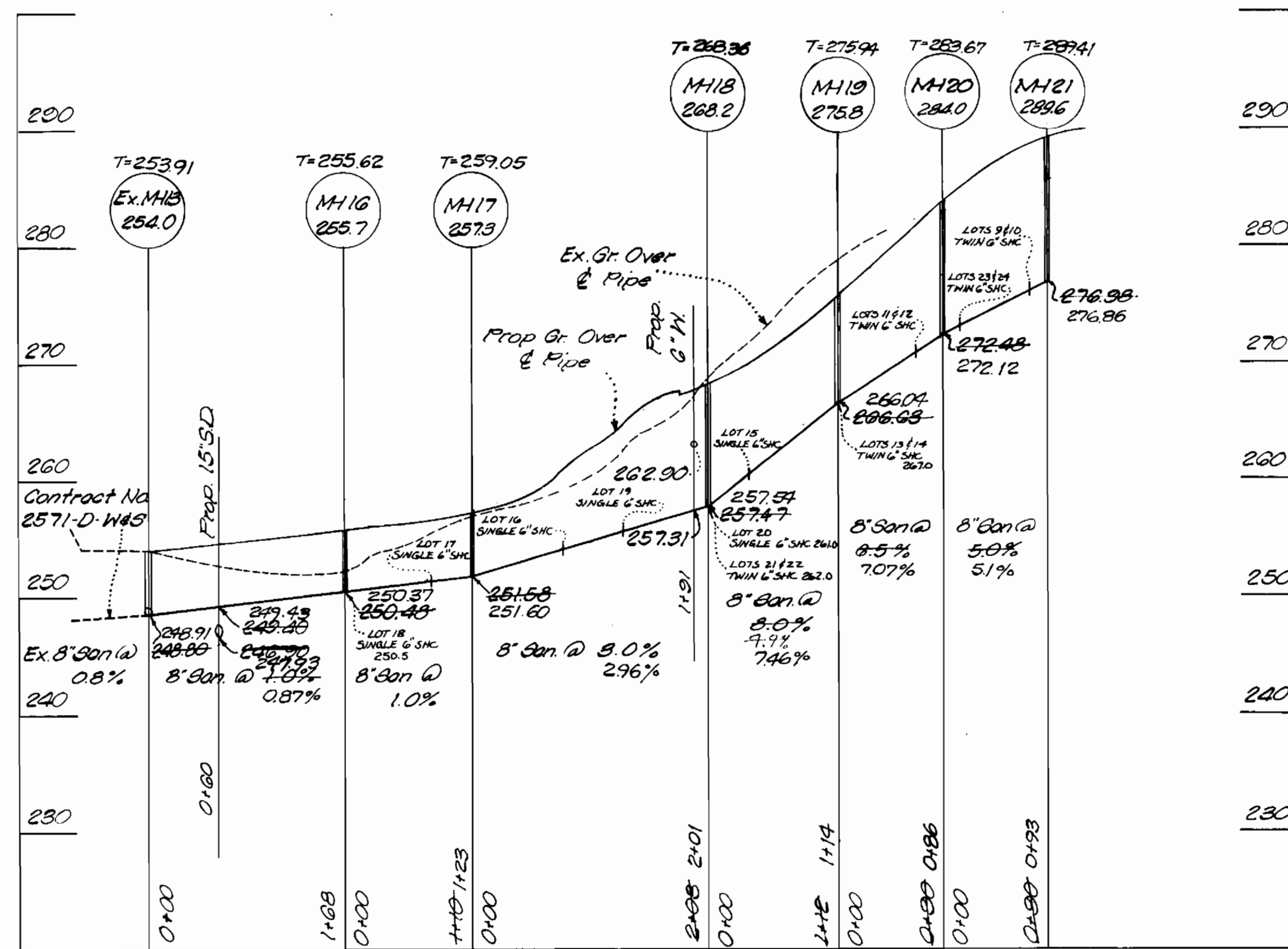
QUANTITIES			
ITEM	QUANTITY		SUPPLIER
	BID	AS BUILT	
6" WATER	465 L.F.		
FIRE HYDRANTS	2		
8" SEWER	1590 L.F.		
MANHOLES	12		



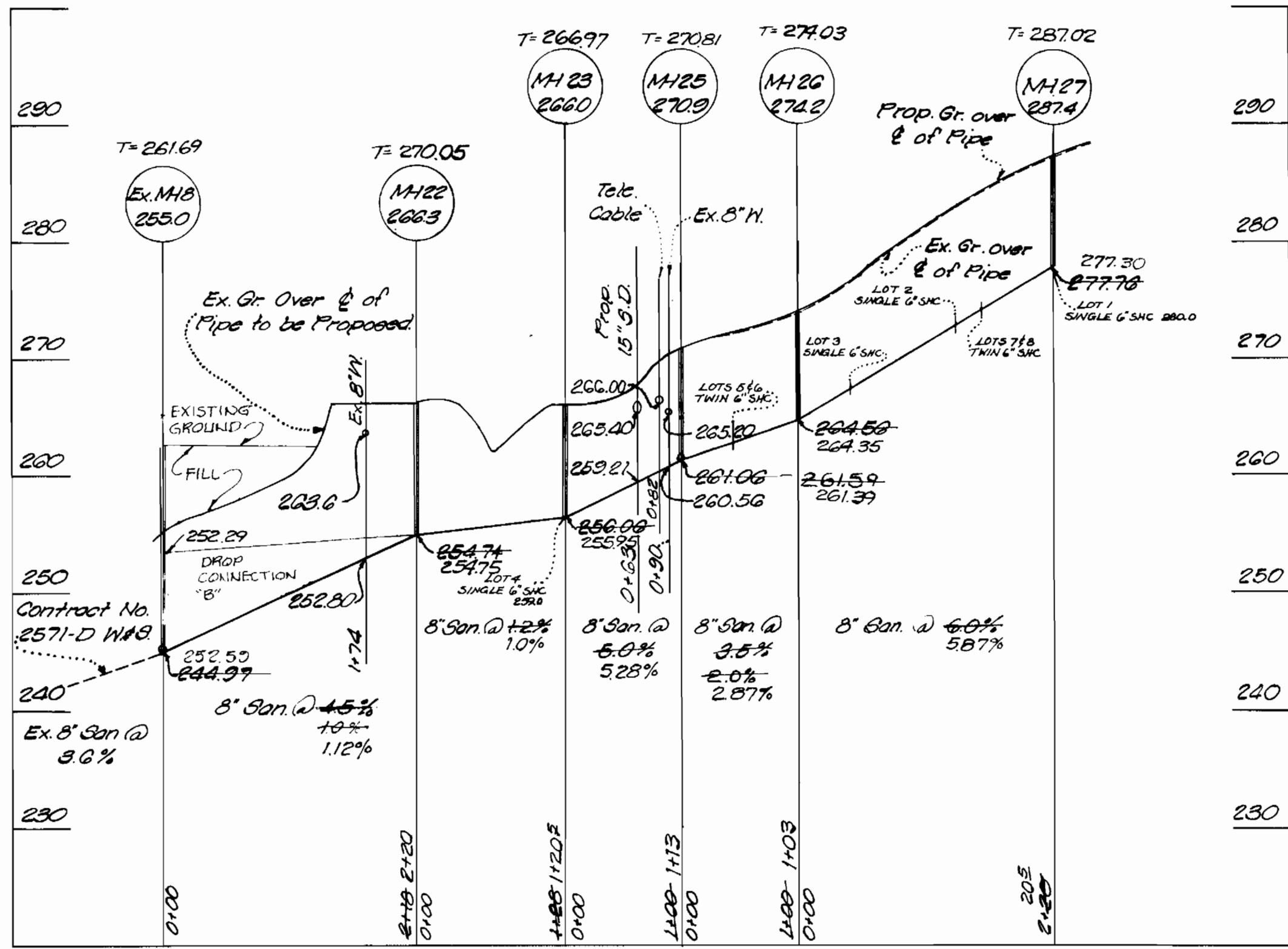
- NOTES:
1. Minimum size of all Sewer House Connections up to Property Line is 6-inches
 2. Twin Water House Connection are designed as per Standard Detail W-50 inside Meter Setting (See Detail of Left)
 3. Single Water House Connections up to Property Line are 6-inches with 6-inch Meter Setting

Whiskey Bottom North
C-2752-D-1145

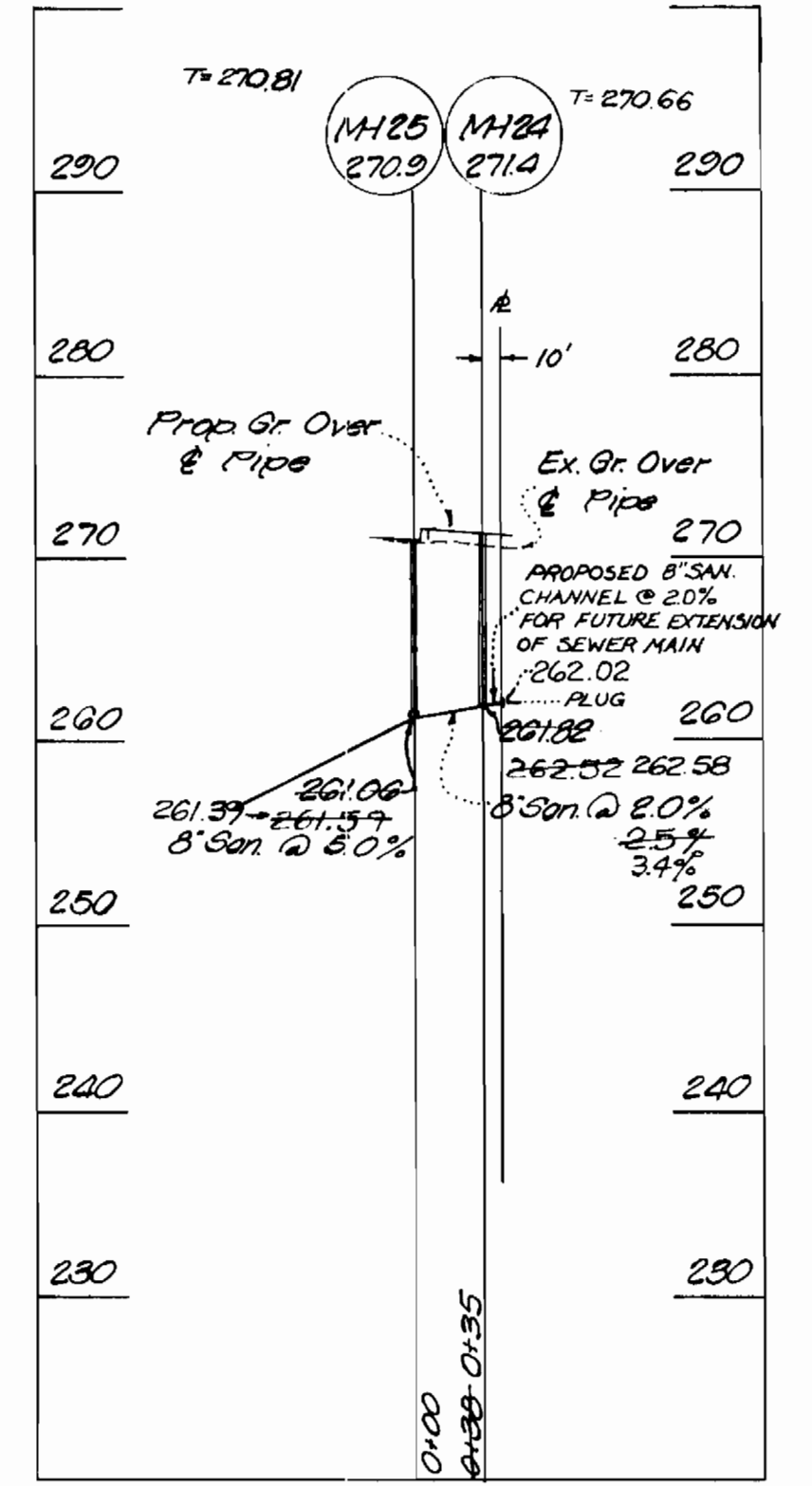
I.P.D.G. Ltd. 302 Sliga Avenue Silver Spring, Md. 20910 585-5676	DEPARTMENT OF PUBLIC WORKS HOWARD COUNTY, MARYLAND R. E. Rudenbeck 5/10/78 DIRECTOR OF PUBLIC WORKS DATE	CONTRACT NO. 2752-D W45 5-10-78 CHIEF-BUREAU OF ENGINEERING DATE	WATER MAIN & SANITARY SEWERS PLAN	WHISKEY BOTTOM NORTH SIXTH ELECTION DISTRICT HOWARD COUNTY, MARYLAND	DRAWING NO. 1 OF 2 SCALE 1"=50'
	As Built 1982 AS-BUILT UPDATED 9-27-82				



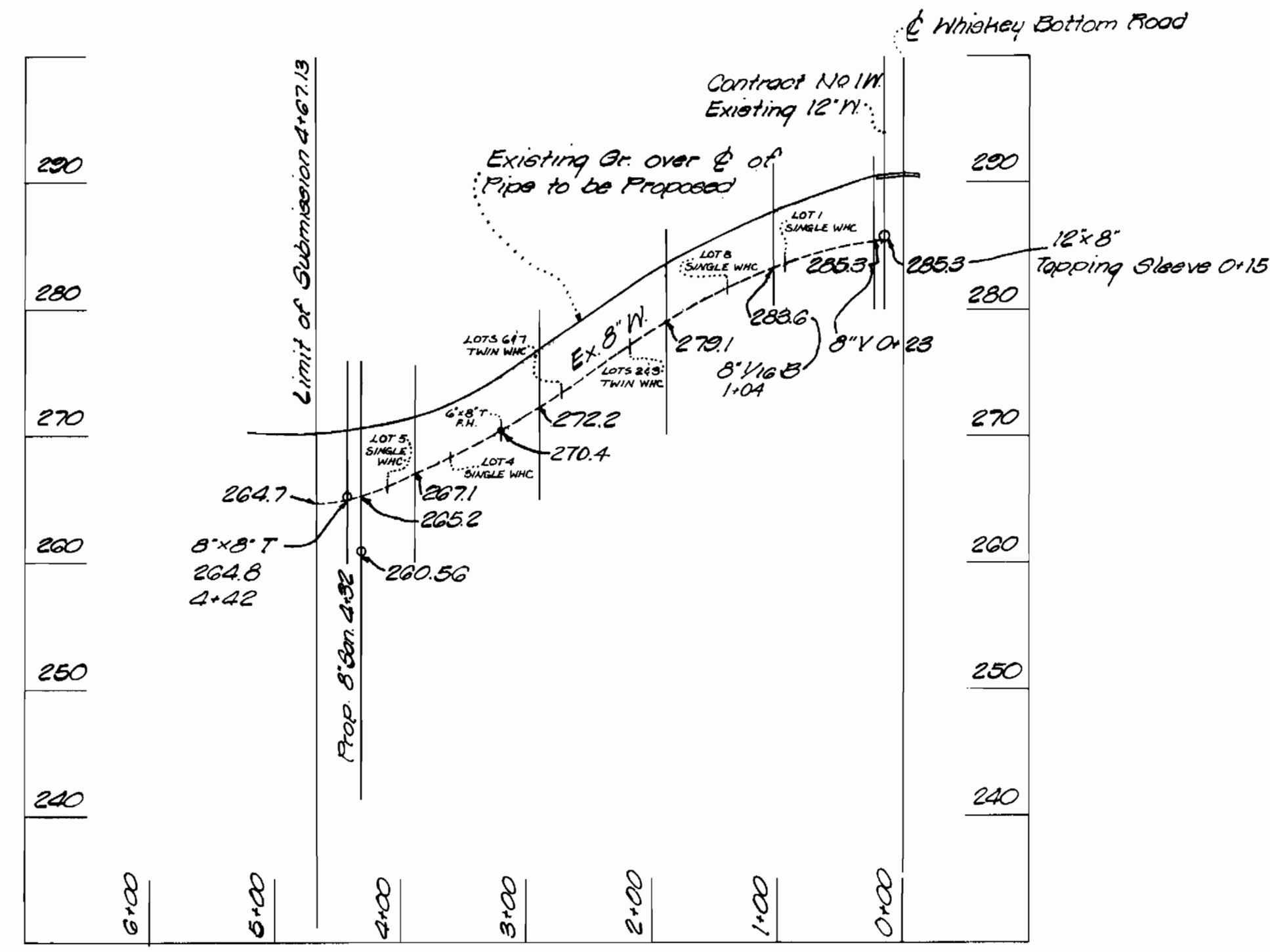
SEWER PROFILE
MELLOW COURT
Scale Horiz = 1"=100'
Vert = 1"=10'



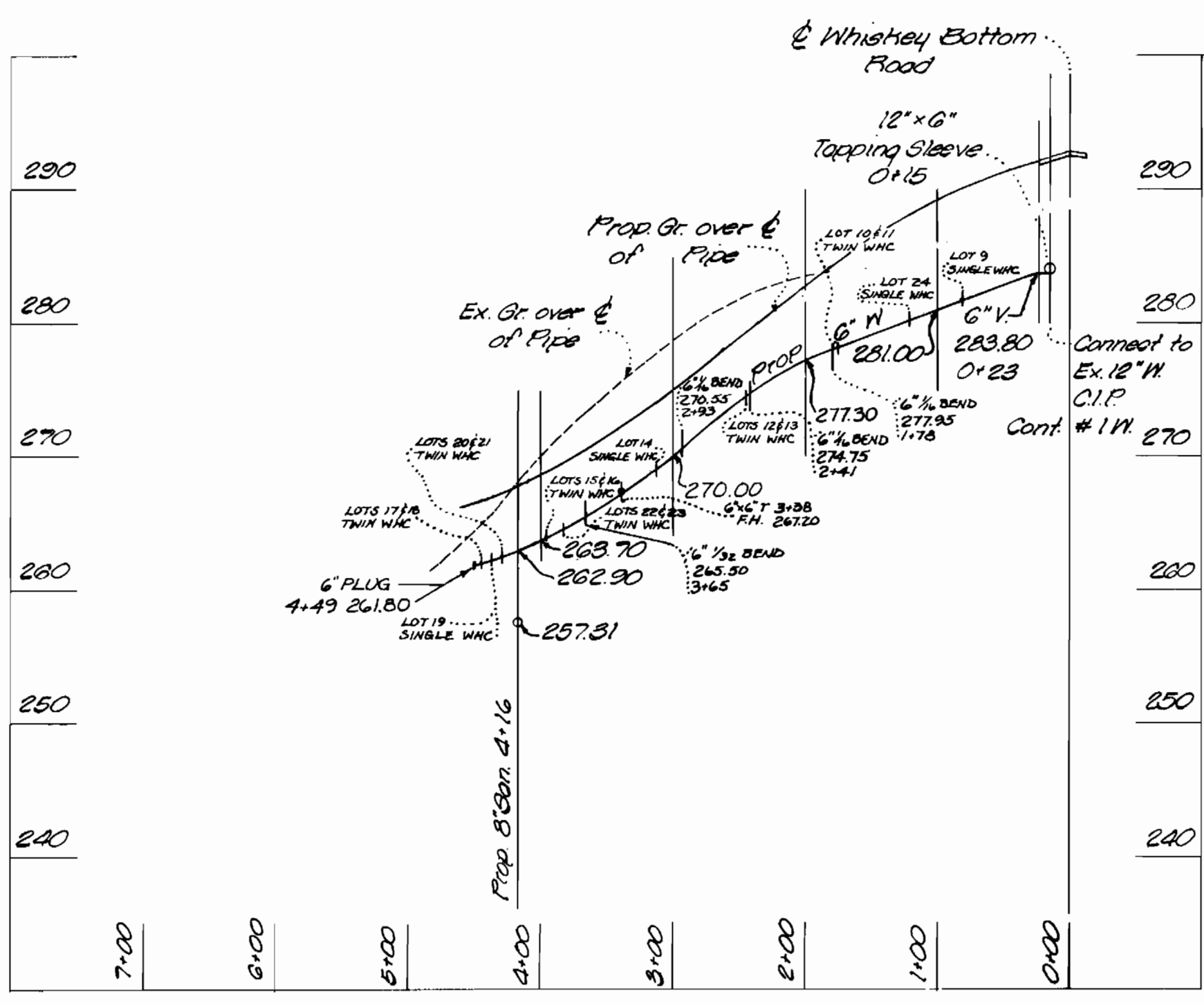
SEWER PROFILE
OLD LANTERN WAY & MOON SHINE HOLLOW
Scale Horiz = 1"=100'
Vert = 1"=10'



SEWER PROFILE
OLD LANTERN WAY
Scale Horiz = 1"=100'
Vert = 1"=10'



*WATER PROFILE
OLD LANTERN WAY
Scale Horiz = 1"=100'
Vert = 1"=10'



WATER PROFILE
MELLOW COURT
Scale Horiz = 1"=100'
Vert = 1"=10'

- GENERAL NOTES**
- PART I**
- Approximate location of existing mains are shown. The contractor shall take all necessary precautions to protect existing mains and services and maintain uninterrupted supply. Any damage incurred shall be repaired immediately.
 - All horizontal controls are base Maryland State Datum.
 - All vertical controls are base on U.S.G.S System.
 - All pipe elevations shown are invert elevations.
 - Clear all utilities by a minimum of 6". Clear all poles by 2'-0" minimum or tunnel as required.
 - For all standard details see standards bound in specifications.
 - Contractor shall locate existing utilities in advance of construction operations in the vicinity of proposed utilities.
 - The contractor shall notify the Baltimore Gas and Electric Company 72 hours in advance prior to any construction in the vicinity of any gas and electric facilities by calling 234-5691 extension 60. The contractor shall notify the C&P Telephone Company prior to any construction in the vicinity of any Telephone Company facilities by calling collect 393-3648 in Baltimore. Call Miss Utility - 1-333-0100.
 - Trees are to be protected from damage to maximum extent. All trees located within the construction strip are not to be removed or damage by the contractor.
- WATER - PART II**
- All water mains to be C.I.P., D.I.P. or A.C.P. unless otherwise noted.
 - Top of all water mains to have a minimum of 3 1/2' cover unless otherwise noted.
 - All valves shall be strapped to trees in accordance with standard details.
 - Block all fittings with concrete, see standards bound in specification.
 - Bury line elevation on fire hydrants shall be set to the elevations shown on the drawings. All fire hydrants shall be strapped and buttressed with concrete in accordance with standard details.
 - All water meter vaults to be for either twin 5/8" meters or single 5/8" meter unless otherwise noted. Meters furnished and installed by the County.
- SEWER - PART III**
- All sewer mains shall be C.S.P.X., V.C.P.X., or A.C.P. Class 4000 unless otherwise noted.
 - The contractor shall provide a joint in all sewer mains within 2'-0" of exterior manhole walls.
 - All manholes shall be 4'-0" inside diameter, unless otherwise noted.
 - Cost of polyfilter X and rip rap to be included in the unit price bid for furnishing and laying of sewer mains.



Whiskey Bottom North
C-2752-D 11#3

* NOTE: Existing Water Main (Contract No 2571-D-11#3)

I.P.D.S. L.H. 802 Sligo Avenue Silver Spring, Md 20910 585-5676	DEPARTMENT OF PUBLIC WORKS HOWARD COUNTY, MARYLAND R.E. Freudenberger DIRECTOR OF PUBLIC WORKS		CONTRACT NO. 2752-D WFS	WATER MAINS & SANITARY SEWERS PROFILES	WHISKEY BOTTOM NORTH SIXTH ELECTION DISTRICT HOWARD COUNTY, MARYLAND	DRAWING NO. 2 OF 2	SCALE AS SHOWN
	DATE 5/10/78	CHIEF - BUREAU OF ENGINEERING WOT/Alford	DATE 5-10-78				

As Built 1982
UPDATED 48-BUILT 9-27-82