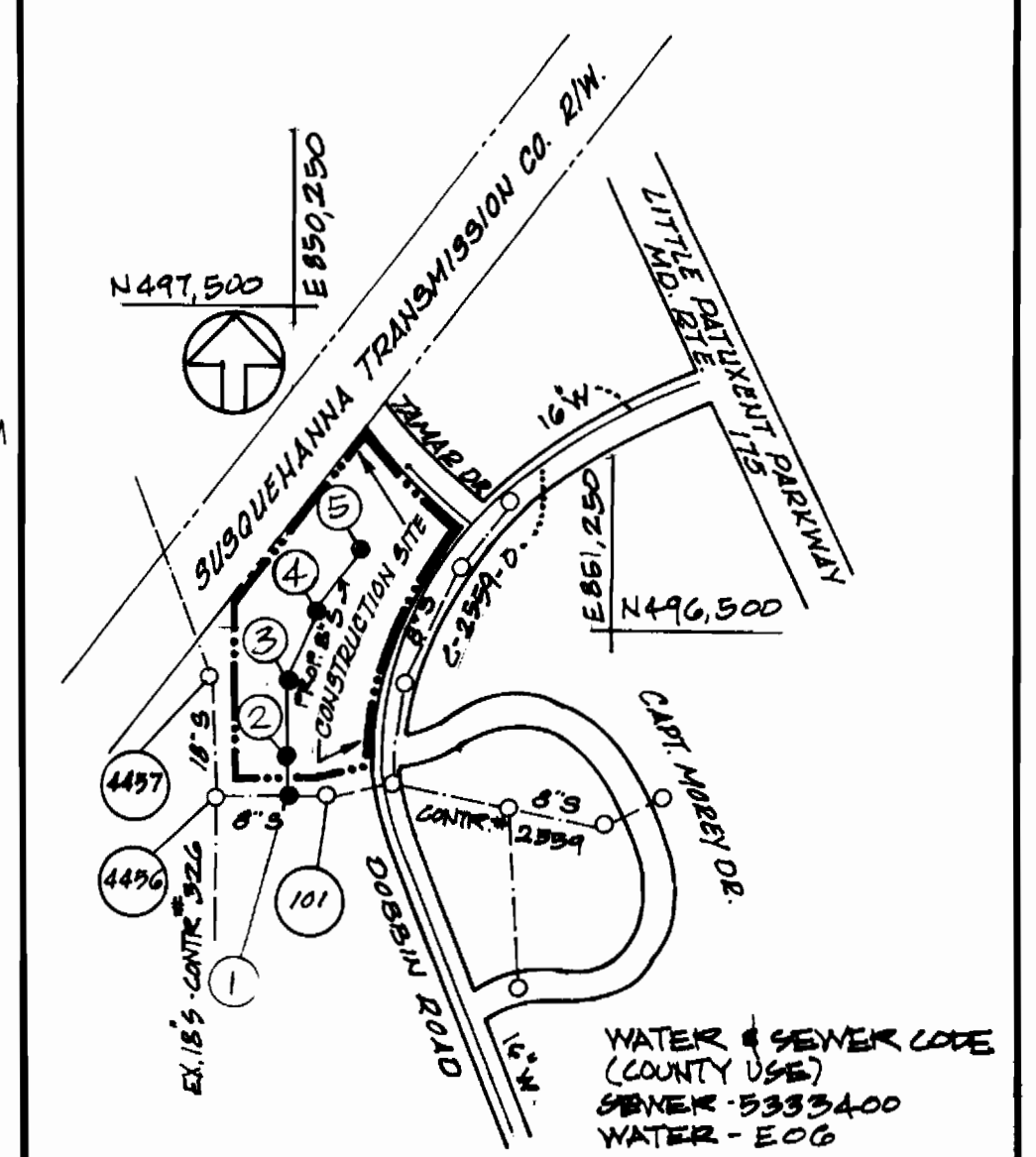


SITE B.M. #903 ELEV. 363.78
 N 496,098.77
 E 850,684.21
 DESCRIPTION: IRON PIPE SET ON SOUTH SIDE OF TAMAR DRIVE, 40' WEST OF DOBBIN ROAD.

SITE B.M. #907 ELEV. 359.95
 N 496,142.46
 E 850,195.86
 DESCRIPTION: IRON PIPE SET 50' EAST OF WESTERN MOST PT. & 123' FROM SOUTHERN MOST PT.

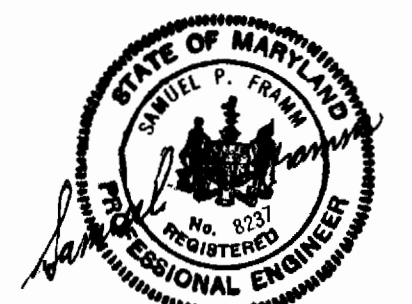
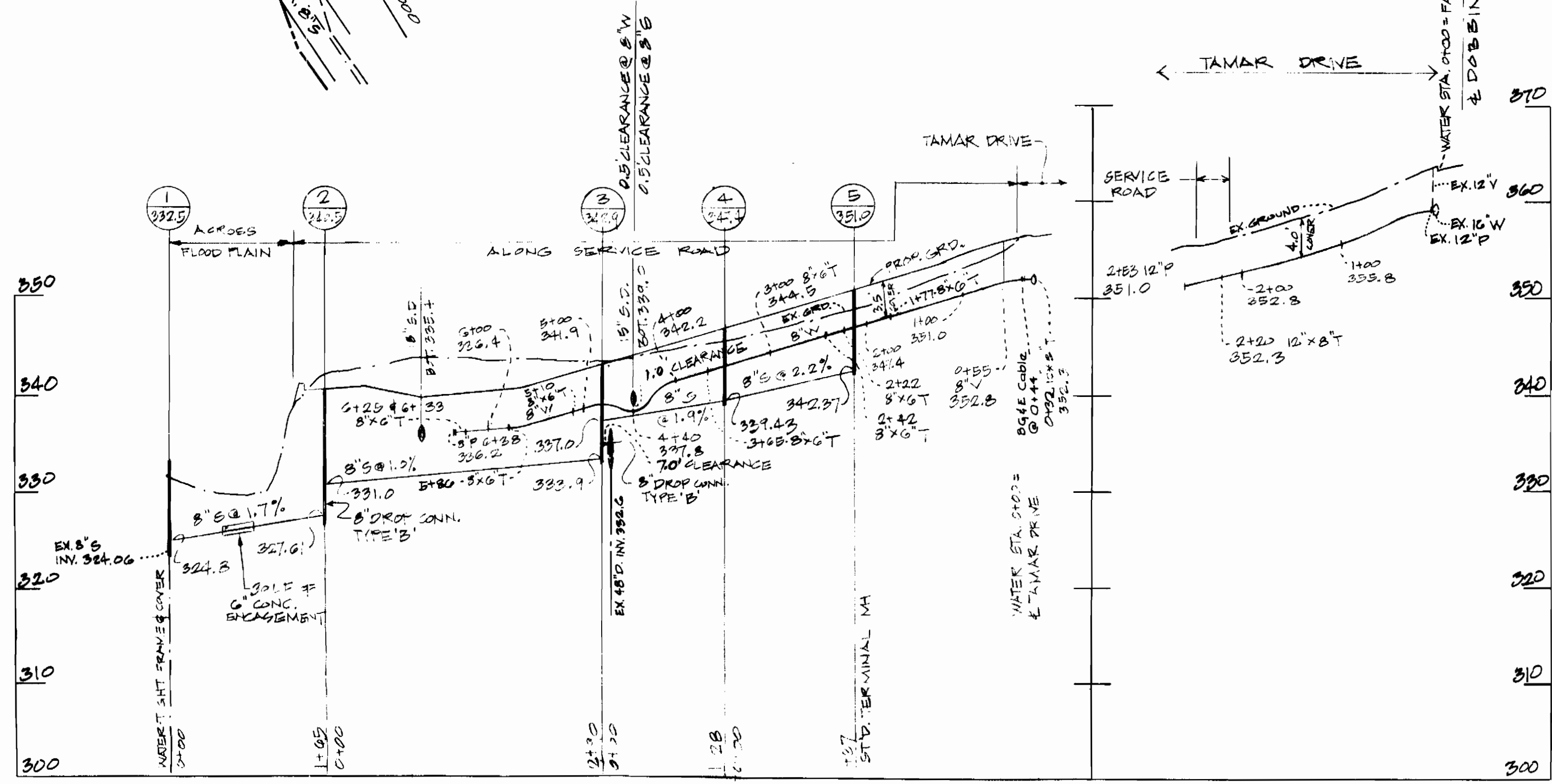


LOCATION MAP
 SCALE: 1" = 600'
 BENCH MARK #60 ELEV. 354.93
 CUT OPPOSITE F.H. DOBBIN RD. STA. 60+59

GENERAL NOTES

1. Approximate location of existing mains are shown. The contractor shall take all necessary precautions to protect existing mains and services and maintain uninterrupted supply. Any damage incurred shall be repaired immediately.
2. All pipe elevations shown are invert elevations.
3. The contractor shall locate existing utilities a minimum of two weeks in advance of construction operations in vicinity of utilities.
4. For all standard details see standards bound in specifications.
5. Clear all utilities by a minimum of 6"
6. The contractor shall provide a joint in all sewer mains within 2'0" of exterior manhole walls.
7. All manholes shall be 4'0" inside diameter.
8. All water mains to have a minimum of 3 1/2" cover unless otherwise noted.
9. Back all fillings with concrete, see standards bound in specifications.
10. Bury line elevations on fire hydrants shall be set to the elevations shown on the drawing. Soil around the fire hydrant to be compacted in accordance with Section 5-15 of the standard specifications.
11. All fire hydrants shall be strapped to the tee and shall be buttressed with concrete in accordance with standard details.
12. All horizontal and vertical controls are based on Maryland State datum.
13. The Contractor shall notify the following utilities or agencies at least 5 days before starting work shown on this plan:
 - BALTIMORE GAS AND ELECTRIC COMPANY - UNDERGROUND ELECTRIC 234-3691
 - UNDERGROUND GAS 559-0100
 - CHESAPEAKE AND POTOMAC TELEPHONE COMPANY 727-9976

NOTE: G" Valves on G" Service Lines for Lots I-3, I-7 & I-8 were strapped directly to 8"x6" Tees as shown - not behind curb.



SAMUEL P. FRAMM
 MD. REG. P.E. N#8237

ITEM	QUANTITY		SUPPLIER
	BID	AS BUILT	
8" WATER	638 L.F.	606 L.F.	US Pipe
6" WATER #	30 L.F.	* 35 L.F.	US Pipe
12" WATER	255 L.F.	253 L.F.	US Pipe
FIRE HYDRANTS	2 Nos.	2 Nos.	Flow Indus
8" SEWER	720 L.F.	701 L.F.	Johns Mansfield

* EXCLUDING WATER SERVICE LINES

Sewer: 6" 48" ACP - Class 2400 - JOHNS - MANSFIELD
 Water: 6" 8" 12" DIP - US PIPE

COLUMBIA AUTO PARK
 SEC. 1
 AREA 1

H. MALMUD & ASSOC. INC. 8815 MEADOW HEIGHTS ROAD RANDALLSTOWN, MD. 21138 TELEPHONE (301) 655-6465	DEPARTMENT OF PUBLIC WORKS HOWARD COUNTY, MARYLAND 8-23-77 DATE	CONTRACT NO. C-7750-D-W-49 8-23-77 DATE	PLAN AND PROFILES OF WATER AND SEWER MAINS	ELECTION DISTRICT NO. 6 GUILFORD	DRAWING NO. 1 OF 1	SCALE AS SHOWN
					As Built: 11-21-1977	AUGUST 8, 1977