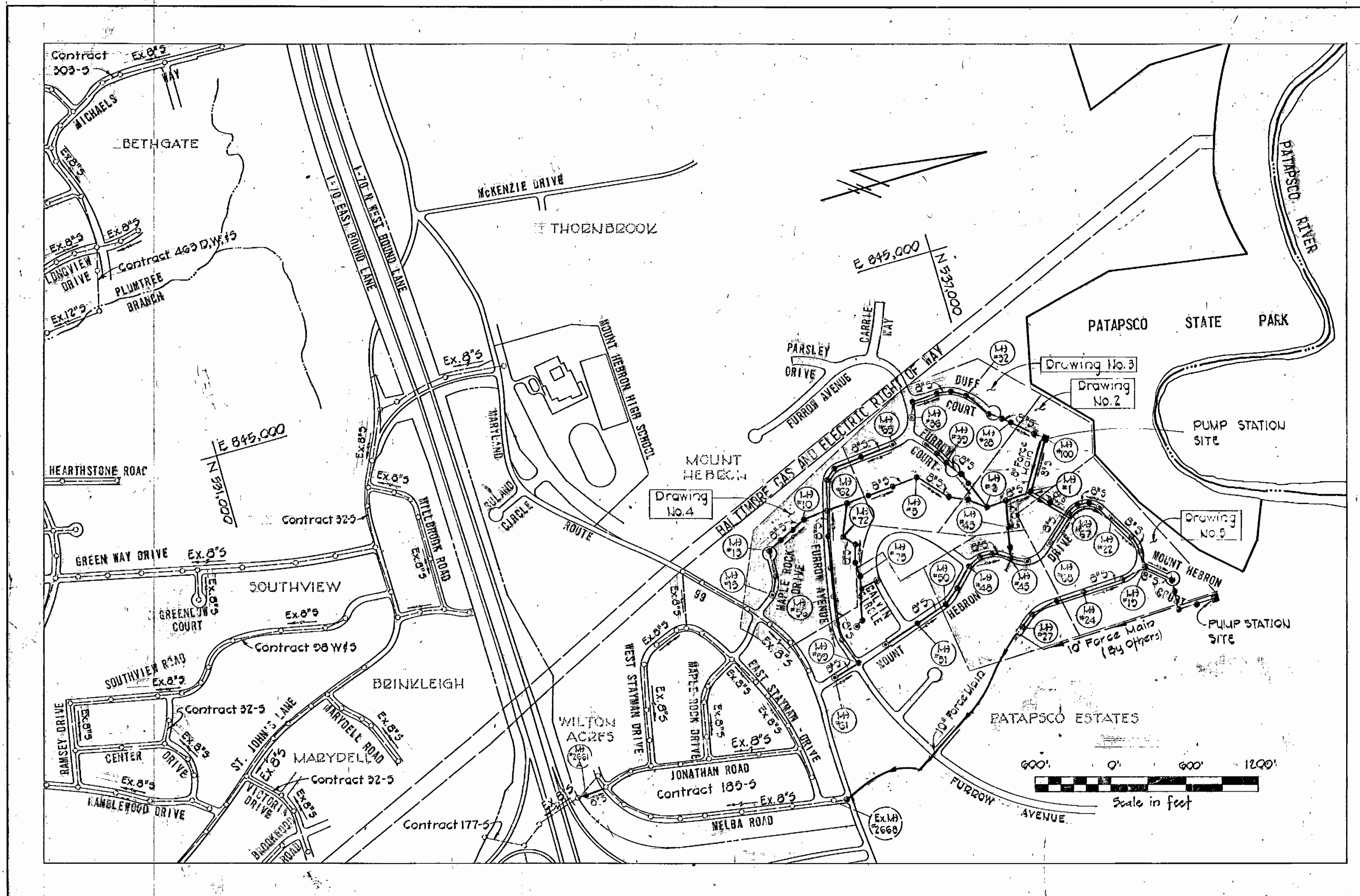


QUANTITIES		
Item	Estimated	As-Built
8" Force Main	710	709
6" Sewer	3835	3675
4" Sewer	1210	1375
Manholes	300	312



- GENERAL NOTES**
- Approximate location of existing utilities is shown. The Contractor shall take all necessary precautions to protect existing utilities and to maintain uninterrupted service. Any damage incurred shall be repaired immediately to the satisfaction of the Engineer by the Contractor at the Contractor's expense.
 - The Contractor shall locate existing utilities a minimum of two weeks in advance of construction operations in vicinity of utilities. Cost shall be included in the unit prices bid for excavation and backfill for mains.
 - Contractor shall notify the following utilities or agencies at least five (5) days before starting work shown on these plans:
 Miss Utility (Collect) 1-359-0100
 Baltimore Gas & Electric Company - Underground Electric Distribution Engineering "Damage Control" Mr. G.J. Zeller, Manager - 234-5891
 Baltimore Gas & Electric Company - Underground Gas Distribution Engineering, Mr. Ball - 234-5533
 Chesapeake and Potomac Telephone Co. - 725-9978
 State Highway Administration 531-5533
 - Clear all utilities by a minimum of 8'. Clear all poles 2'-0" minimum or tunnel as required. Cost for tunneling or bracing at poles shall be included in the unit prices bid for excavation and backfill for sewer mains.
 - All pipe elevations shown are invert elevations.
 - All manholes shall be 4'-0" inside diameter.
 - The Contractor shall provide a pipe joint in each sewer main within 2'-0" of exterior of manhole walls.
 - Watertight manhole frame and cover to be used where indicated on drawings Standard Details S-12 (RCR-83A). Where watertight manhole frame and cover is used, set top of frame 1'-6" above finished grade.
 - For details not shown on the Contract Drawings see Standard Details bound in the specifications.
 - Trees are to be protected from damage to the maximum extent.
 - Contractor shall remove trees, stumps and roots along line of excavation as directed by the Engineer. Payment for such removal shall be included in the unit price bid for excavation and backfill for sewer mains.
 - Place regulation "Men Working" and warning signs as required to comply with Maryland State Highway Administration Manual of Traffic Control for Highway Construction and Maintenance Operations.
 - All sewer mains shall be C.S.P.X., V.C.P.X., or A.C.P. Class 2400, unless otherwise noted.
 - Force mains shall be ductile iron for Class B1 in accordance with Section 8 of the specifications. Force mains shall have a minimum of 4 feet of cover.
 - Buttress or anchor all force main fittings with concrete. For details see Standard Details bound in the Specifications.
 - Horizontal and vertical controls are based on the Maryland State Grid Coordinate System.

CAPITAL PROJECT S-4-6037
CONTRACT NO. 744-S-A
MOUNT HEBRON SANITARY SEWERS
HOWARD COUNTY, MARYLAND
DEPARTMENT OF PUBLIC WORKS

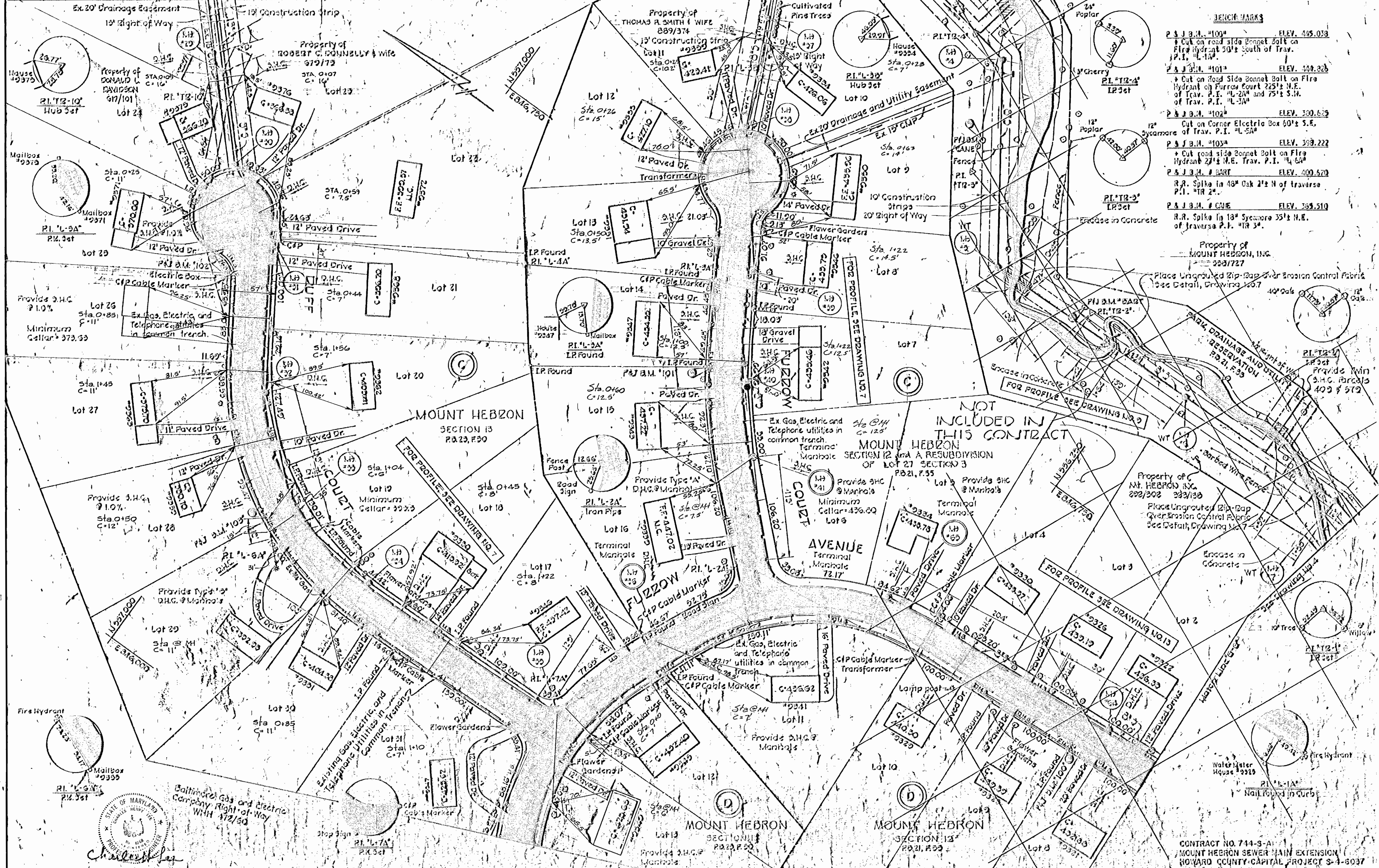


CONTRACT NO. 744-S-A
 MOUNT HEBRON SEWER MAIN EXTENSION
 HOWARD COUNTY CAPITAL PROJECT S-4-6037

PURDUM & JESCHKE ENGINEERS 1023 N. CALVERT ST. BALTIMORE, MARYLAND	DEPARTMENT OF PUBLIC WORKS HOWARD COUNTY, MARYLAND 8-30-77 DATE	CONTRACT NO. 744-S-A CAPITAL PROJECT NO. S-4-6037	LOCATION MAP OF SANITARY SEWERS	MOUNT HEBRON SEWER MAINS ELECTION DISTRICT NO. 2 HOWARD COUNTY, MARYLAND	DRAWING NO. 1	SCALE MAPS
					OF 8	As Shown

AS BUILTS JULY 1981

Match Line "E-E" See Drawing No. 2



BENCH MARKS

P & J B.M. #100	ELEV. 445.038
Cut on road side Bonnet Bolt on Fire Hydrant 50' S of Trv. P.I. "L-1A"	
P & J B.M. #101	ELEV. 444.828
Cut on Road Side Bonnet Bolt on Fire Hydrant on Furrow Court 25' N.E. of Trv. P.I. "L-2A" and 75' S.W. of Trv. P.I. "L-3A"	
P & J B.M. #102	ELEV. 389.629
Cut on Corner Electric Box 60' S.E. of Trv. P.I. "L-5A"	
P & J B.M. #103	ELEV. 389.222
Cut road side Bonnet Bolt on Fire Hydrant 27' N.E. Trv. P.I. "L-6A"	
P & J B.M. # BART	ELEV. 400.570
R.R. Spike in 48" Oak 2' N of traverse P.I. "TR 2"	
P & J B.M. # ONE	ELEV. 389.510
R.R. Spike in 18" Sycamore 35' N.E. of traverse P.I. "TR 3"	

NOT INCLUDED IN THIS CONTRACT

MOUNT HEBRON SECTION 12 AND A RESUBDIVISION OF LOT 27 SECTION 3 P&J P.35

PURDUM & JESCHKE
ENGINEERS
1023 N. CALVERT ST.
BALTIMORE, MARYLAND

DEPARTMENT OF PUBLIC WORKS
HOWARD COUNTY, MARYLAND
DIRECTOR OF PUBLIC WORKS DATE

CONTRACT NO. 744-S-A
CAPITAL PROJECT NO. S-4-8037

PLAN
MOUNT HEBRON SEWER MAINS

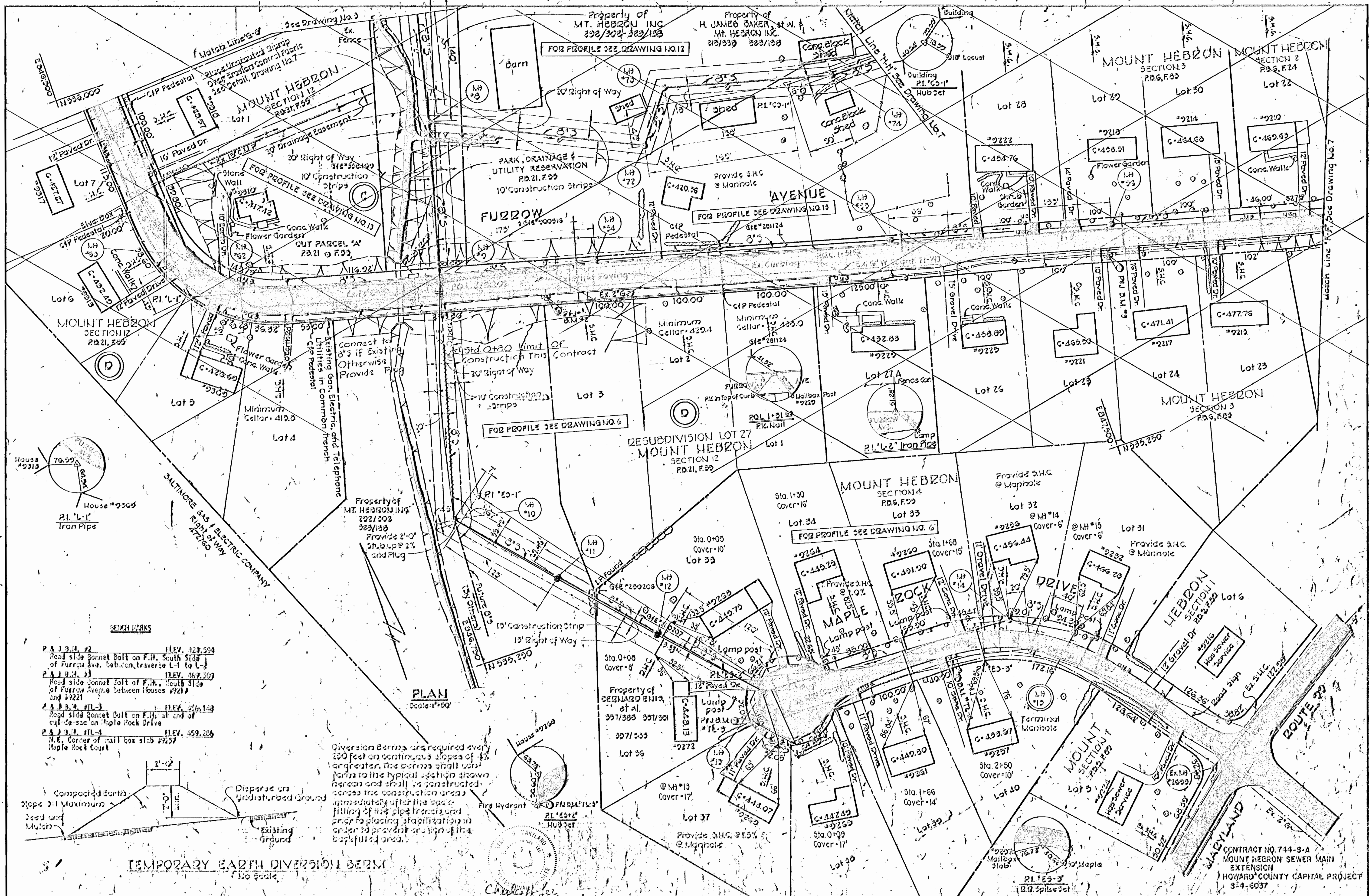
MOUNT HEBRON SEWER MAINS
ELECTION DISTRICT NO. 2
HOWARD COUNTY, MARYLAND

CONTRACT NO. 744-S-A
MOUNT HEBRON SEWER MAIN EXTENSION
HOWARD COUNTY CAPITAL PROJECT S-4-8037

DRAWING NO. 3 OF 8

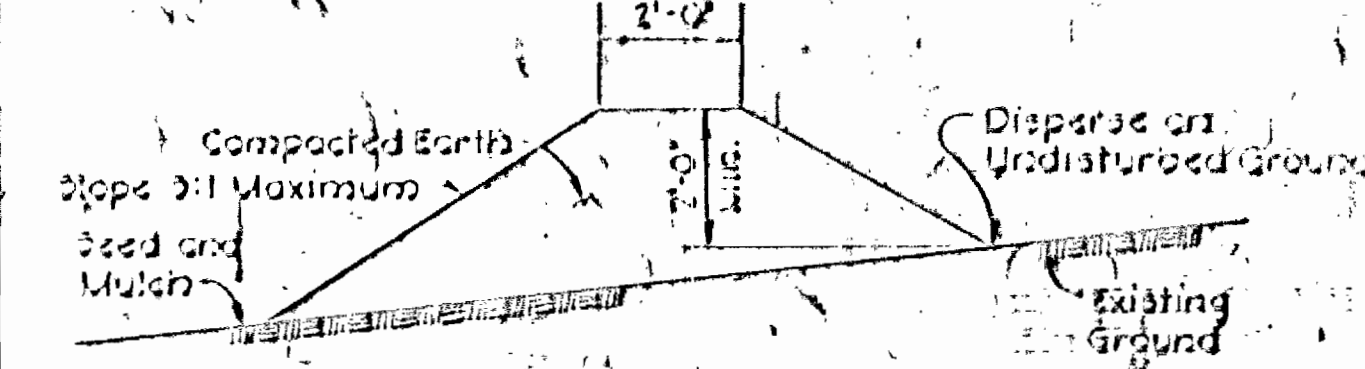
SCALE
1" = 30'

Designed: REP
Drafted: REP
Checked: REP
Nov. 7, 1979



BENCH MARKS

2 & 3 J.M. #2	ELEV. 127.534
Road side Bonnet Bolt on F.H. South Side of Furrrow Ave. between traverse L-1 to L-2	
2 & 3 J.M. #3	ELEV. 167.207
Road side Bonnet Bolt of F.H. South Side of Furrrow Avenue between Houses #9214 and #9221	
2 & 3 J.M. #1L-3	ELEV. 456.138
Road side Bonnet Bolt on F.H. at end of cut-de-sac on Maple Rock Drive	
2 & 3 J.M. #1L-4	ELEV. 459.285
N.E. Corner of mail box slab #9257 Maple Rock Court	

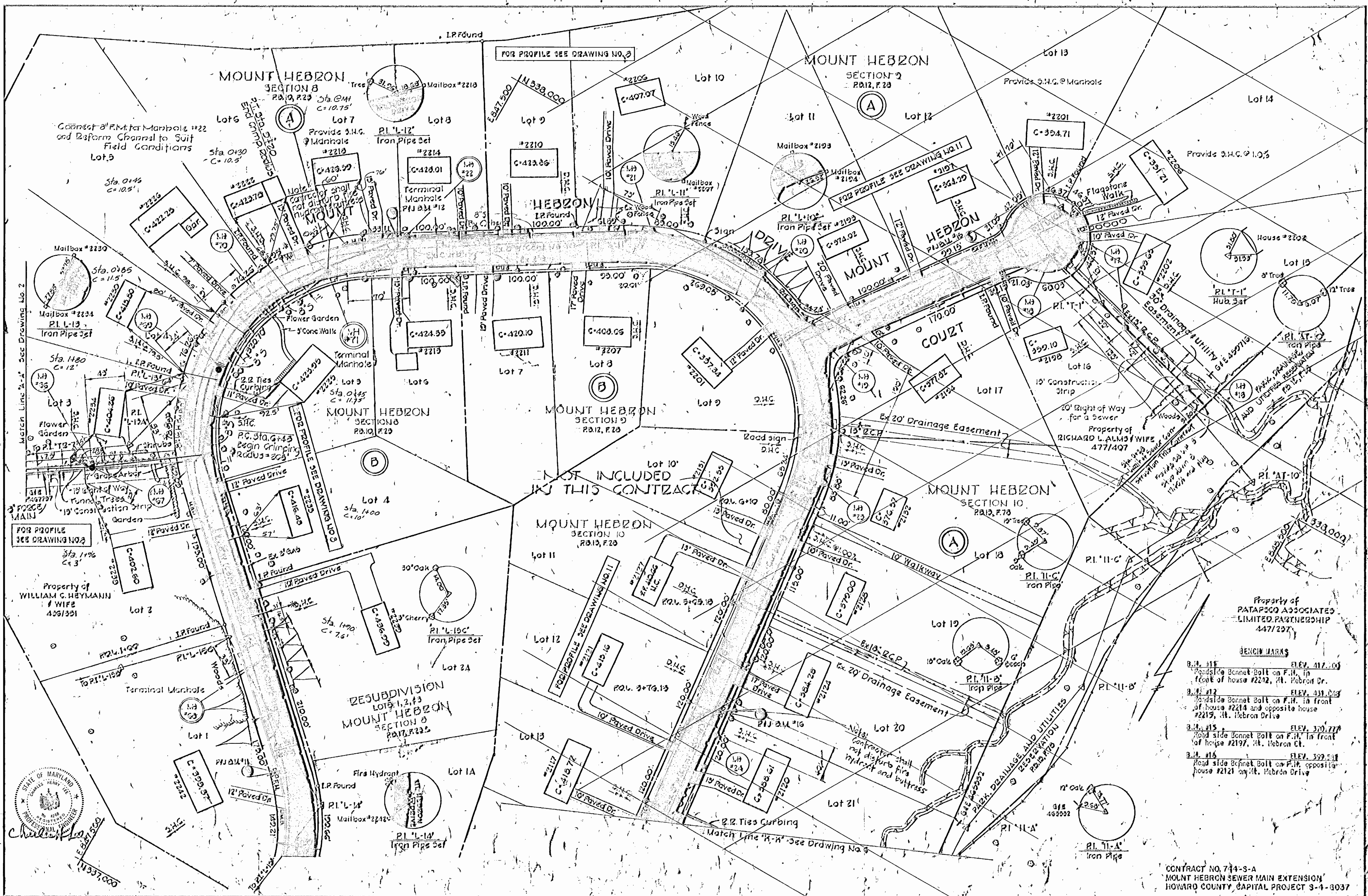


TEMPORARY EARTH DIVERSION BERM
No Scale

Diversion Berms are required every 250 feet on continuous slopes of 4:1 or greater, the berms shall conform to the typical section shown herein and shall be constructed across the construction area immediately after the back-filling of the pipe trench and prior to placing stabilization in order to prevent erosion of the backfilled area.



PURDUM & JESCHKE ENGINEERS 1033 N. CALVERT ST. BALTIMORE, MARYLAND	DEPARTMENT OF PUBLIC WORKS HOWARD COUNTY, MARYLAND DIRECTOR OF PUBLIC WORKS	CONTRACT NO. 744-S-A CAPITAL PROJECT NO. 3-4-8037	PLAN AND DETAILS MOUNT HEBRON SEWER MAINS	MOUNT HEBRON SEWER MAINS ELECTION DISTRICT NO. 2 HOWARD COUNTY, MARYLAND	DRAWING NO. 8	SCALE As Shown
					DATE:	CHECKED BY:



Property of PATAPSCO ASSOCIATED LIMITED PARTNERSHIP 447/297

BENCH MARKS

B.M. #11 ELEV. 417.00
Roadside Bonnet Bolt on F.H. in front of house #2202, Mt. Hebron Dr.

B.M. #12 ELEV. 431.00
Roadside Bonnet Bolt on F.H. in front of house #2214 and opposite house #2219, Mt. Hebron Drive

B.M. #15 ELEV. 370.77
Road side Bonnet Bolt on F.H. in front of house #2197, Mt. Hebron Ct.

B.M. #16 ELEV. 392.51
Road side Bonnet Bolt on F.H. opposite house #2212 on Mt. Hebron Drive

PURDUM & JESCHKE
ENGINEERS
1023 N. CALVERT ST.
BALTIMORE, MARYLAND

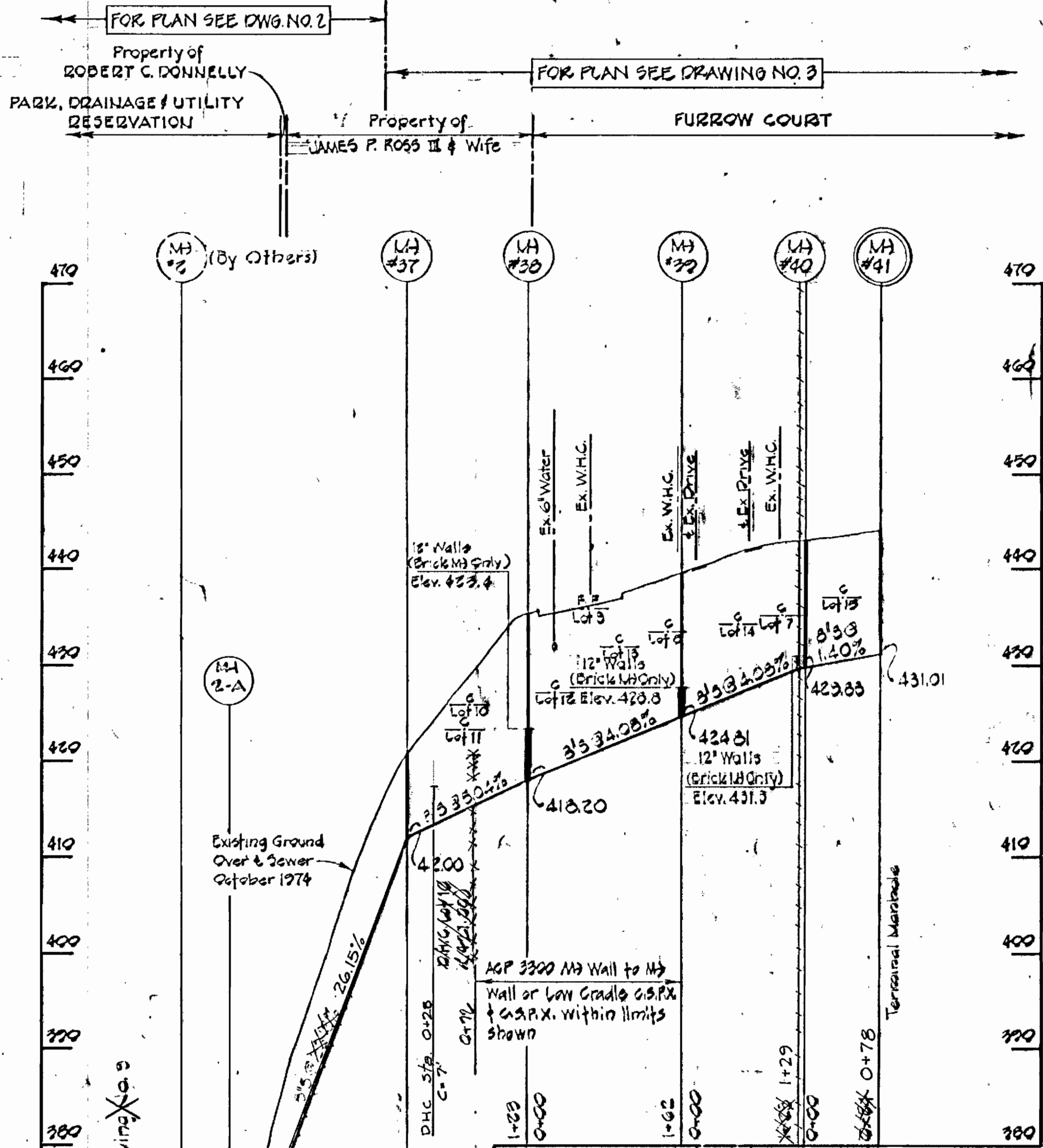
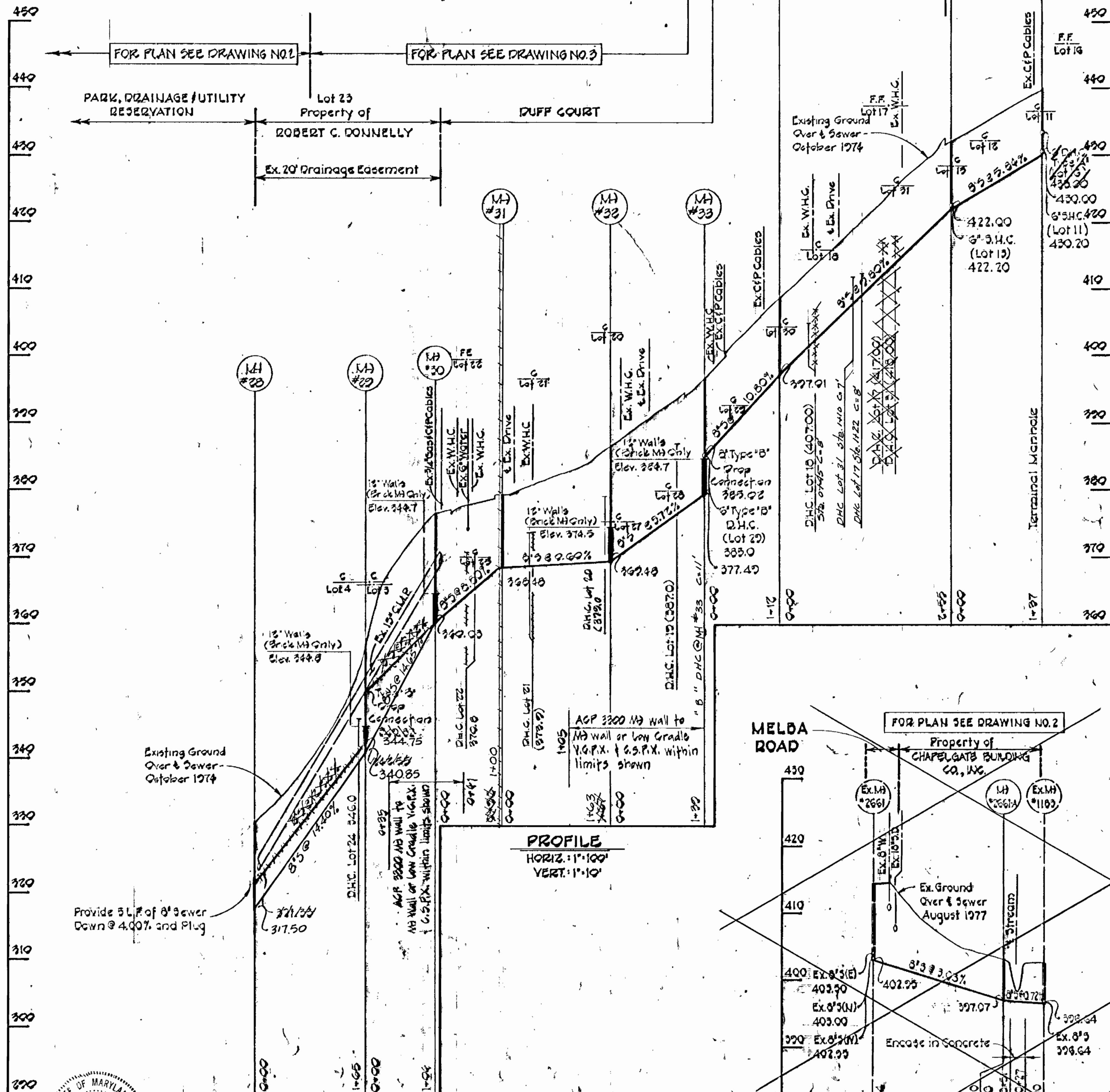
DEPARTMENT OF PUBLIC WORKS
HOWARD COUNTY, MARYLAND
DIRECTOR OF PUBLIC WORKS DATE: 8-13-11
CHIEF BUREAU OF ENGINEERING DATE: 8-11-11

CONTRACT NO. 744-S-A
CAPITAL PROJECT NO. S-4-8037

PLAN
MOUNT HEBRON SEWER MAINS

MOUNT HEBRON SEWER MAINS
ELECTION DISTRICT NO. 2
HOWARD COUNTY, MARYLAND

DRAWING NO. 3 OF 8
SCALE 1"=50'
DESIGNED BY REP
DRAFTED BY ARZ
CHECKED BY REP
NOV. 7, 1979



PROFILE
HORIZ. 1"=100'
VERT. 1"=10'

PROFILE
HORIZ. 1"=100'
VERT. 1"=10'



PURDUM & JESCHKE
ENGINEERS
1023 N. CALVERT ST.
BALTIMORE, MARYLAND

DEPARTMENT OF PUBLIC WORKS
HOWARD COUNTY, MARYLAND
8-30-77
DIRECTOR OF PUBLIC WORKS

CONTRACT NO. 744-9-A
CAPITAL PROJECT NO. S-4-6037

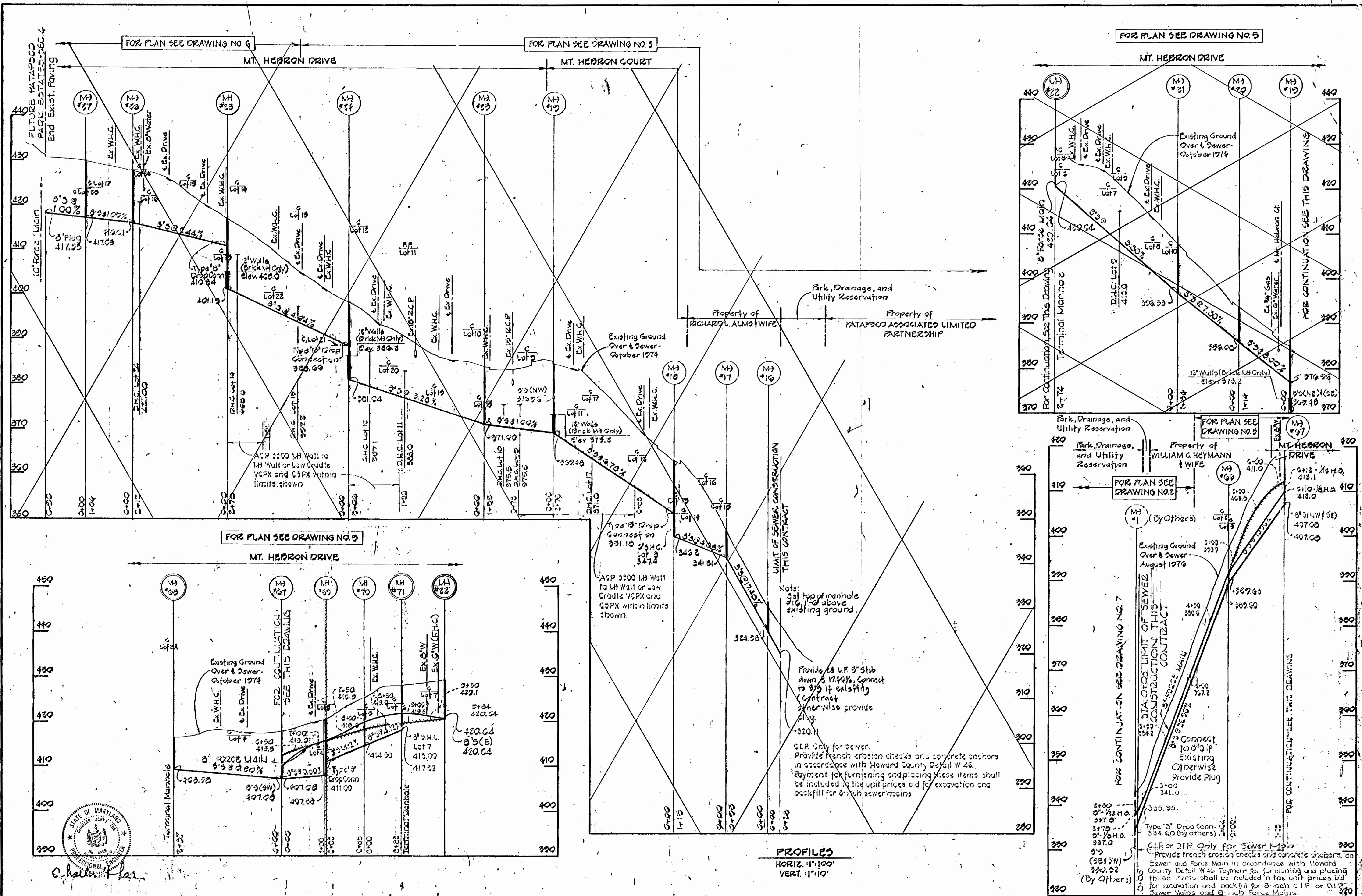
PROFILES OF
SEWER MAINS

MOUNT HEBRON SEWER MAINS
ELECTION DISTRICT NO. 2
HOWARD COUNTY, MARYLAND

DRAWING
NO. 7
OF 8

SCALE
As Shown
Designed: REP
Drafted: REP
Checked: REP
Nov. 7, 1979

CONTRACT NO. 744-9-A
MOUNT HEBRON SEWER MAIN EXTENSION
HOWARD COUNTY CAPITAL PROJECT S-4-6037



PURDUM & JESCHKE
 ENGINEERS
 1023 N. CALVERT ST.
 BALTIMORE, MARYLAND

DEPARTMENT OF PUBLIC WORKS
 HOWARD COUNTY, MARYLAND
 Director of Public Works: *W. J. ...* DATE: *8-29-77*
 Chief Bureau of Engineering: *W. J. ...* DATE: *8-29-77*

CONTRACT NO. 744-3-A
 CAPITAL PROJECT NO. S-4-6037

PROFILES OF SEWER AND FORCE MAINS

MOUNT HEBRON SEWER MAINS
 ELECTION DISTRICT NO. 2
 HOWARD COUNTY, MARYLAND

DRAWING NO. 8 OF 8
 SCALE: As Shown
 Design: REP
 Drafted: REP
 Checked: REP
 Date: Nov. 7, 1979