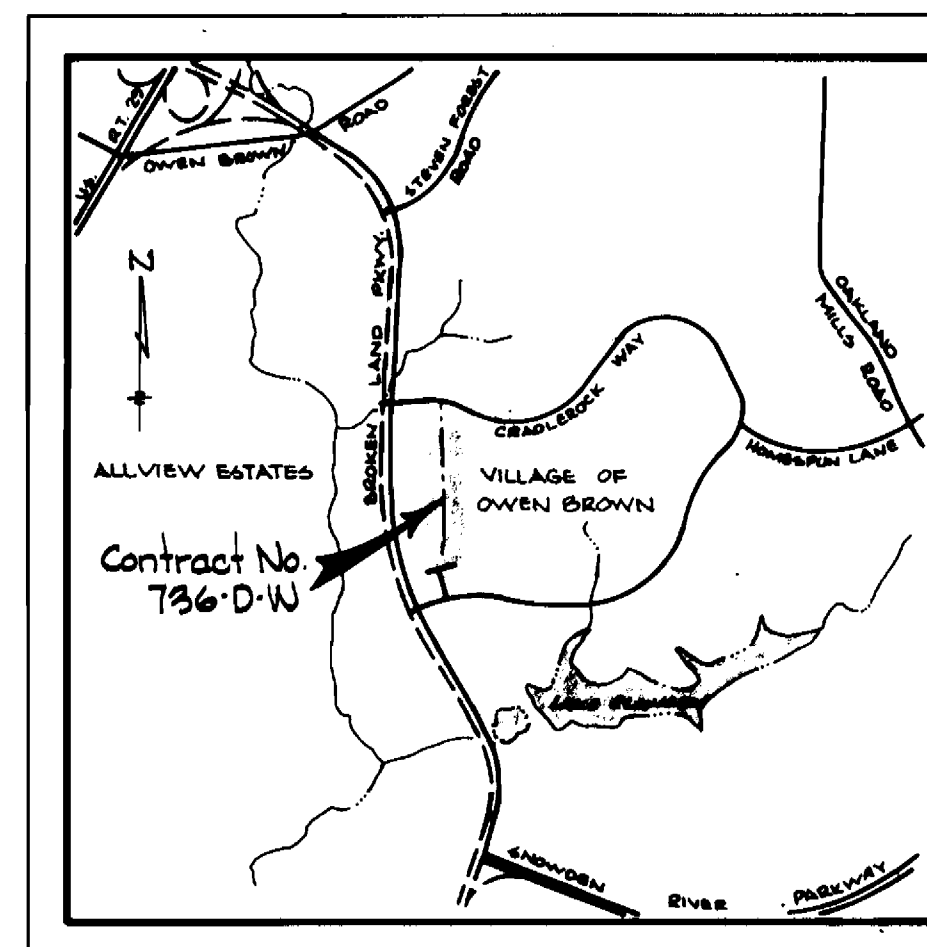
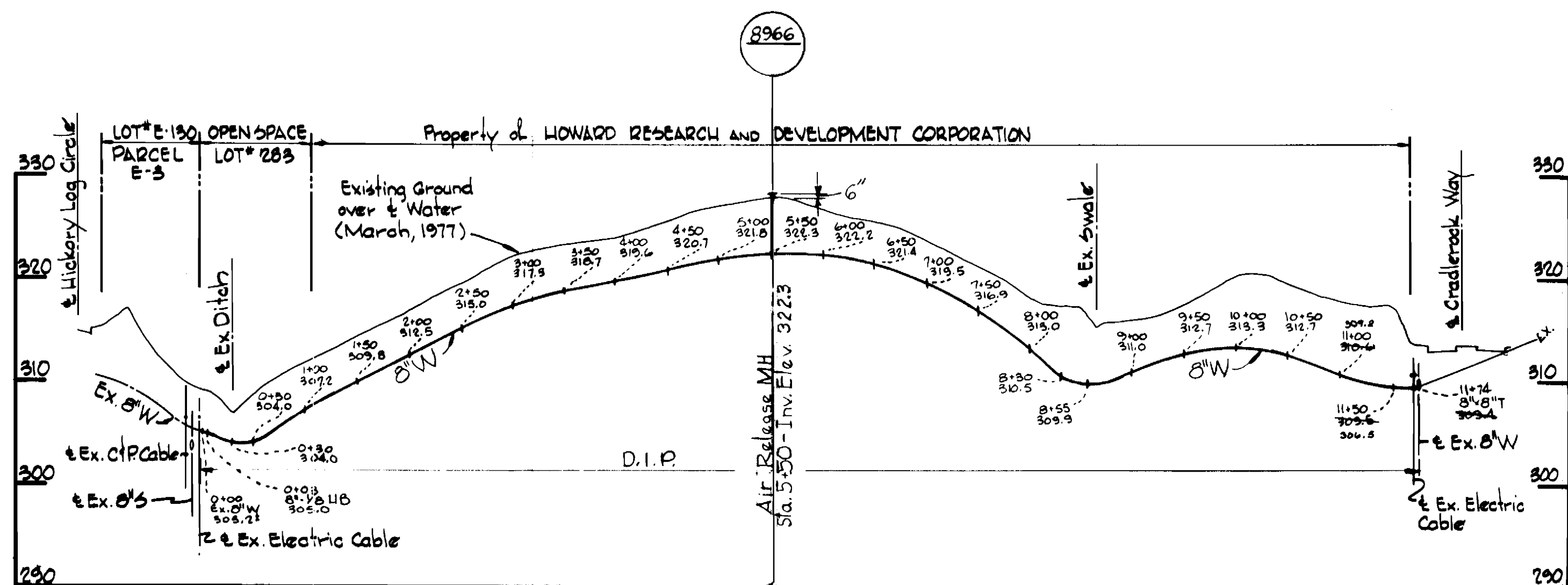


**GENERAL NOTES**

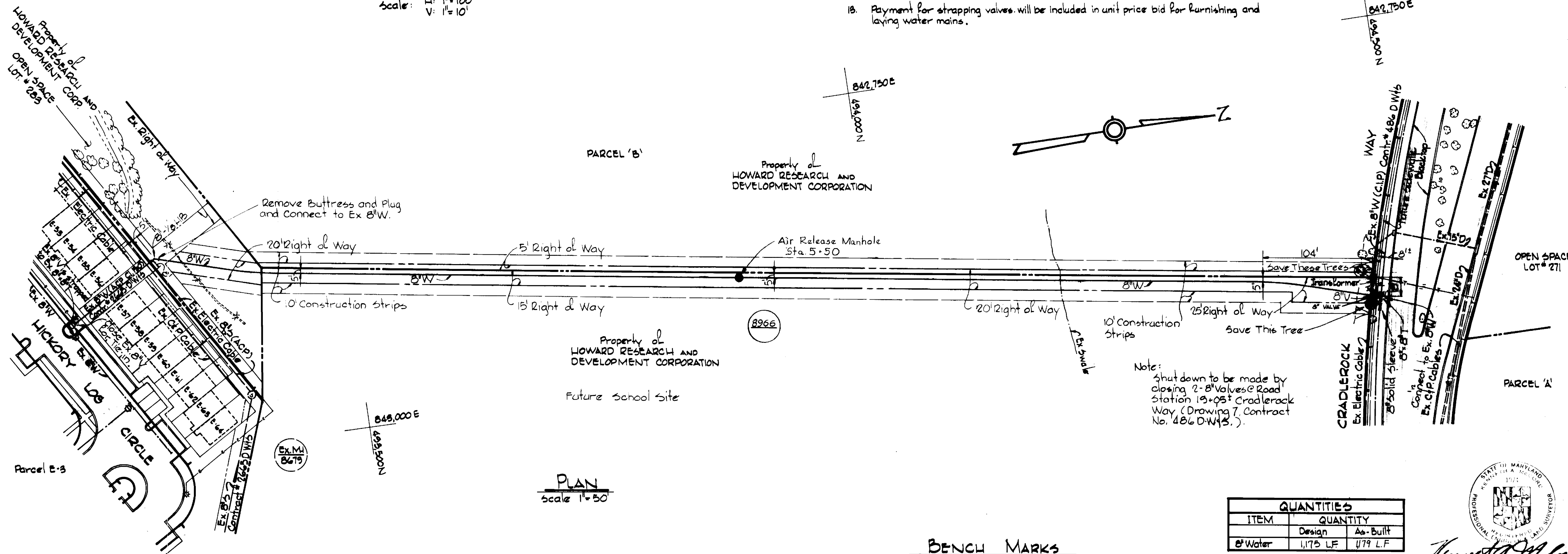
1. Approximate location of existing mains are shown. The Contractor shall take all necessary precautions to protect existing mains and services and maintain uninterrupted supply. Any damage incurred shall be repaired immediately.
2. All pipe elevations shown are invert elevations.
3. The Contractor shall locate existing utilities a minimum of two weeks in advance of construction operations in vicinity of utilities.
4. The Contractor shall notify the following utilities or agencies at least five days before starting work shown on this plan:  
Baltimore Gas and Electric Company  
Underground Gas Distribution Engineering 559-0100  
Underground Electric Distribution Engineering 'Damage Control' 234-5691  
Chesapeake and Potomac Telephone Company 727-9976.
5. For all standard details see standards bound in specifications.
6. All horizontal and vertical controls are based on Maryland State Datum.
7. Clear all utilities by a minimum of 6'.
8. Trees are to be protected from damage to maximum extent. Trees located within the construction strip are not to be removed by the Contractor.
9. All water mains shall be D.I.P.
10. All water mains shall have a minimum of 3 1/2' cover.
11. Block all fittings with concrete, see standards bound in specifications.
12. All valves shall be strapped to trees where applicable in accordance with the Standard Details.
13. Payment for strapping valves will be included in unit price bid for furnishing and laying water mains.



**VICINITY MAP**  
Scale: 1" = 200'



**PROFILE**  
Scale: H: 1" = 100'  
V: 1" = 10'



**PLAN**  
Scale 1" = 50'

Note:  
Shut down to be made by closing 2-8" Valves @ Road Station 13+05 @ Cradlerock Way (Drawing 7, Contract No. 486 D.W.43.)

**BENCH MARKS**

W.R.A. B.M.# 93+00	Elev. 307.79
@ Cradlerock Way Sta. 93+00 (N.T.F.T.)	
W.R.A. B.M.# 94+29.02	Elev. 302.28
@ Cradlerock Way Sta. 94+29.02 (N.T.F.T.)	

**QUANTITIES**

ITEM	QUANTITY	
	Design	As-Built
8" Water	1173 LF	1179 LF

CLASS 52 DUCTILE PIPE



*Kenneth M. Milrod*  
Water Loop  
Village of Owen Brown  
Section 1, Area 1  
Contract No. 736-D-W

WHITMAN, REQUARDT & ASSOCIATES ENGINEERS 1304 ST. PAUL ST. BALTIMORE, MARYLAND	DEPARTMENT OF PUBLIC WORKS HOWARD COUNTY, MARYLAND P. J. [Signature] 4-26-77 DIRECTOR OF PUBLIC WORKS - DATE	CONTRACT NO. 736 D-W W. O. [Signature] 4-26-77 CHIEF-BUREAU OF ENGINEERING - DATE	PLAN AND PROFILE OF WATER MAIN	COLUMBIA VILLAGE OF OWEN BROWN ELECTION DISTRICT GUILFORD NO. 6	DRAWING NO. 1 OF 1	SCALE AS SHOWN	18-0 17-0 F.B.# 5592
					W. O. 2480		

WS 736 W/1