

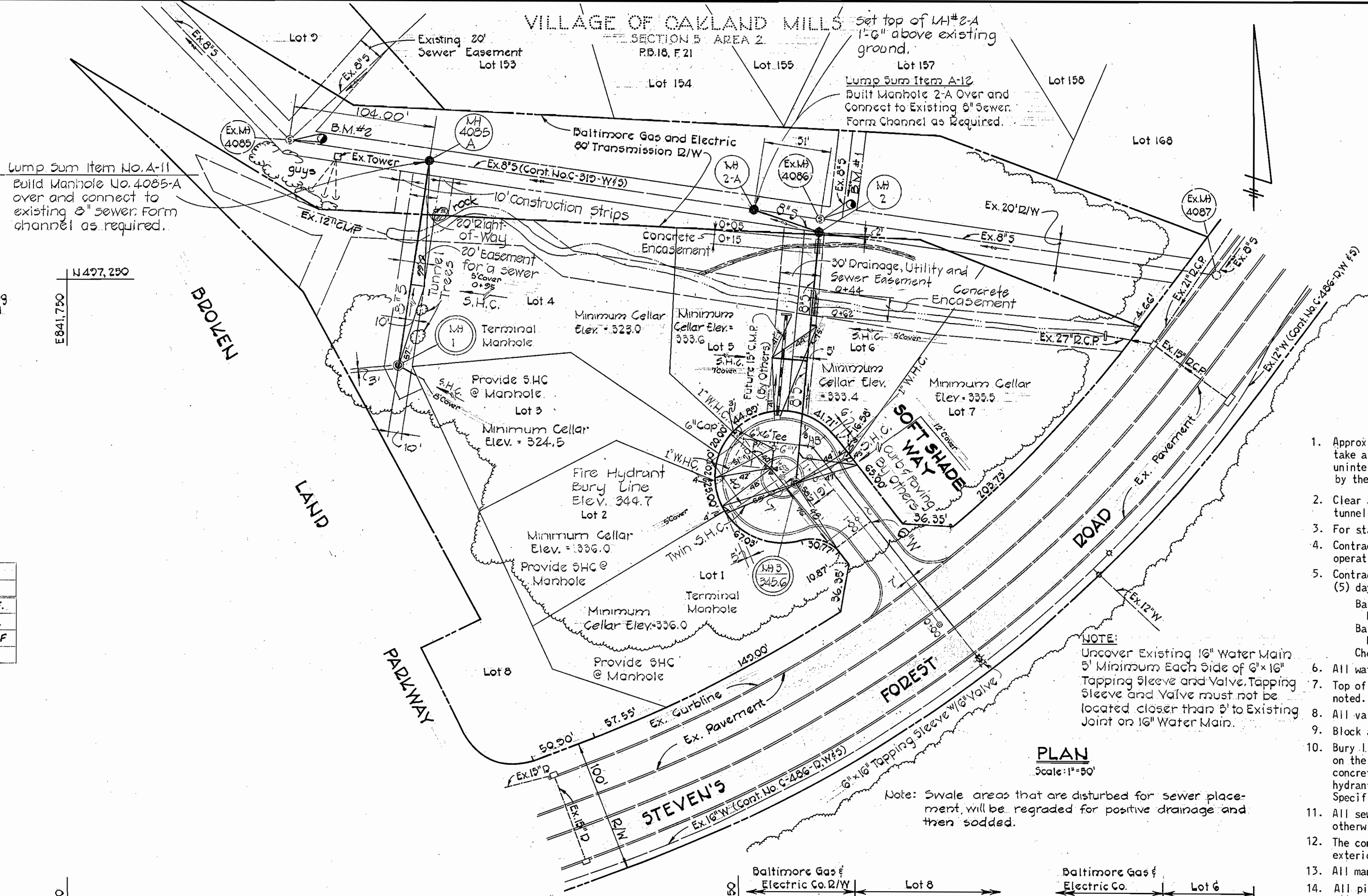
**SECTION A-A
FILL AT MANHOLE**
No Scale

Quantities		
Item	Estimated	As Built
8" Sewer	397 L.F.	380 L.F.
Manholes	4 G.Y.F.	29 V.F.
6" Water	280 L.F.	282 L.F.
Fire hydrant	1	1

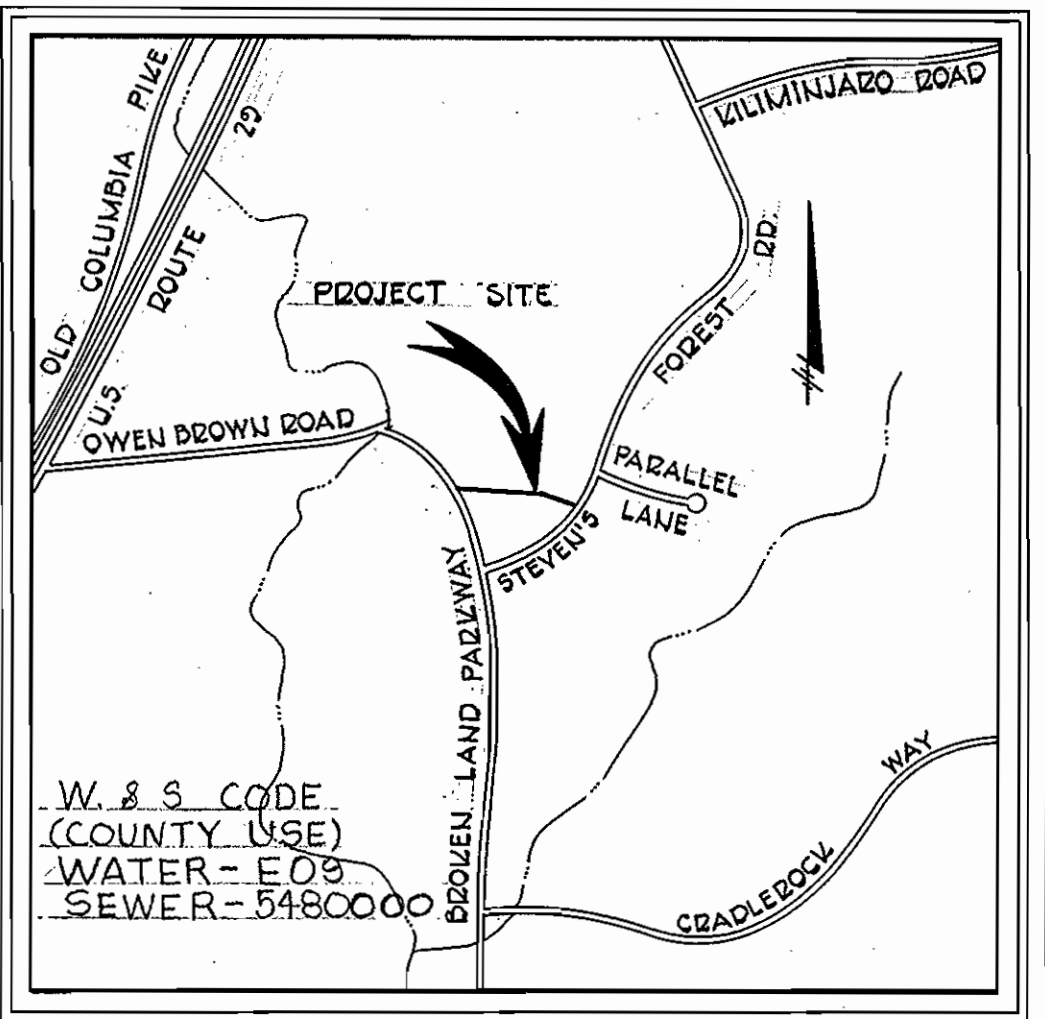
"Sewer" - ACP - J&M 8"
"Water" - DIP - Atlantic States

BENCH MARKS

- PEJ B.M.#1** Elev. 338.39
Top rim painted white, existing manhole #4085.
- PEJ B.M.#2** Elev. 316.07
Top rim painted white, existing manhole #4085, 39' ± west of existing B.G.#E. tower.



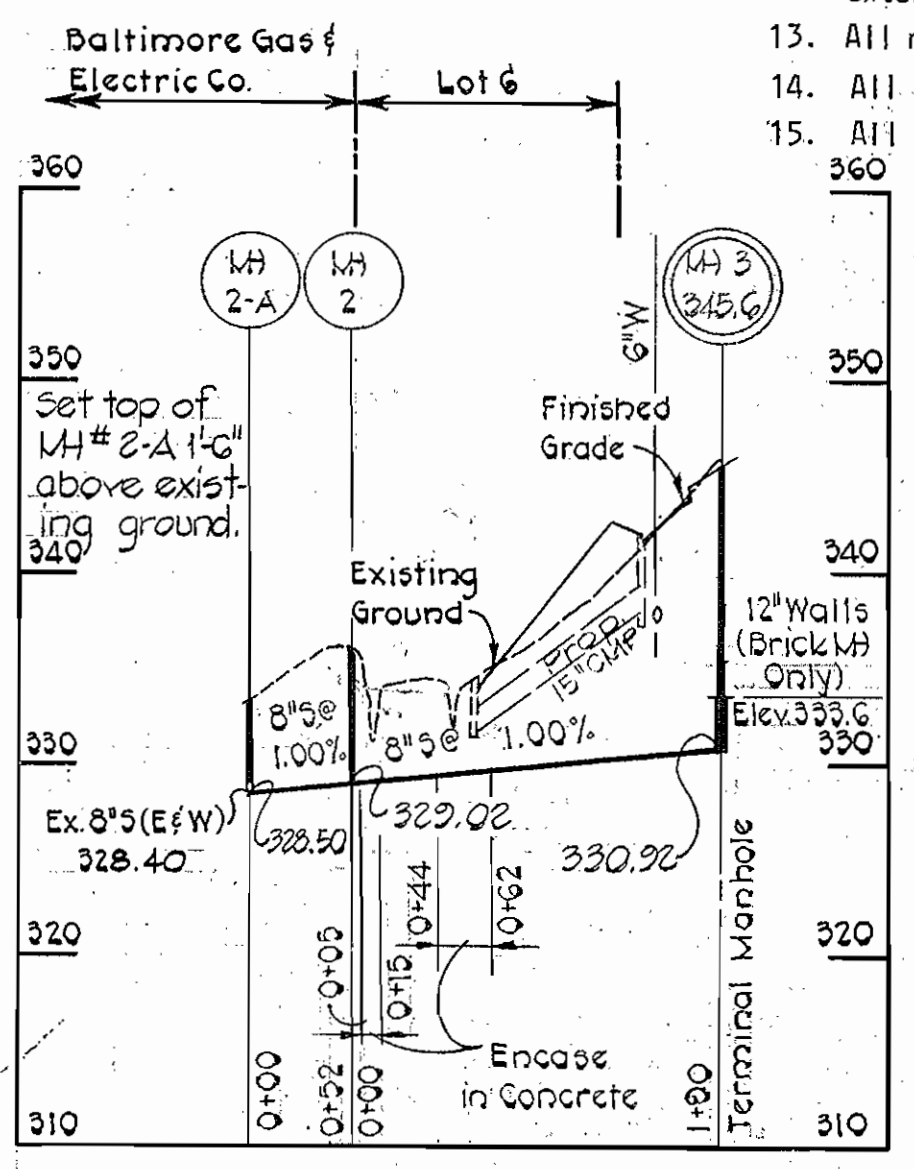
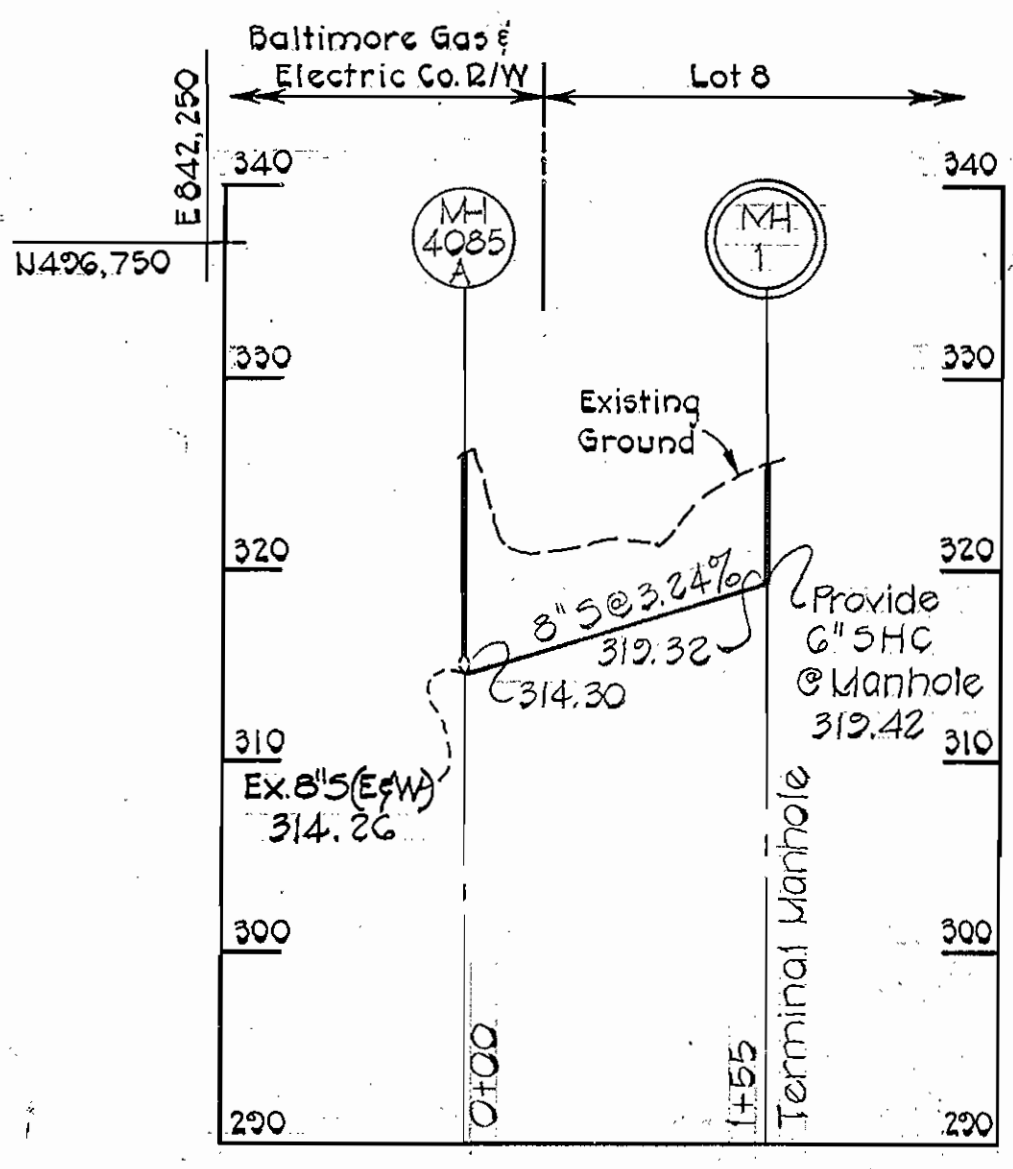
PLAN
Scale: 1"=50'



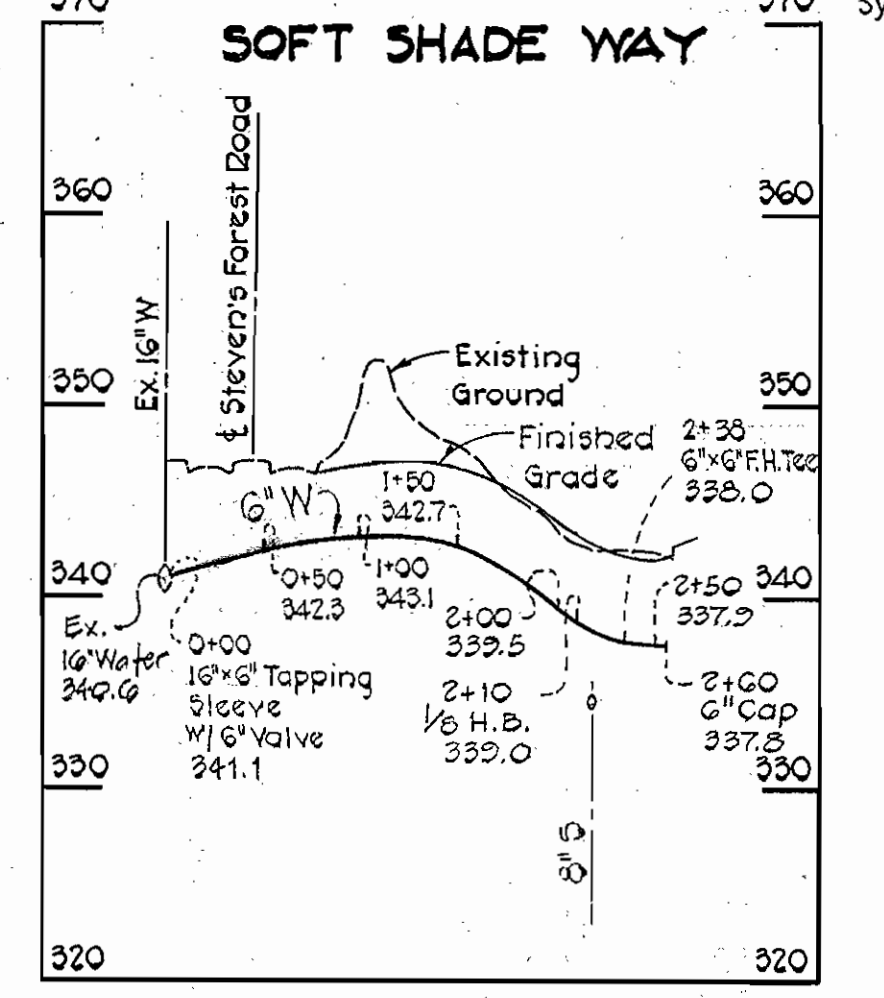
VICINITY MAP
Scale: 1"=1200'

GENERAL NOTES

- Approximate locations of existing mains are shown. The contractor shall take all necessary precautions to protect existing mains with uninterrupted supply. Any damage incurred shall be repaired immediately by the Contractor at the Contractor's expense.
- Clear all utilities by a minimum of 6". Clear all poles 2'-0" minimum or tunnel as required.
- For standard details see standards bound in specifications.
- Contractor shall locate existing utilities in advance of construction operations in the vicinity of proposed utilities.
- Contractor shall notify the following utilities or agencies at least five (5) days before starting work shown on these plans:
Baltimore Gas and Electric Company - Underground Electric Distribution Engineering - "Damage Control" - 234-5691
Baltimore Gas and Electric Company - Underground Gas Distribution Engineering - 559-0100
Chesapeake and Potomac Telephone Co. - 725-9976
- All water mains to be C.I.P., D.I.P., or A.C.P. unless otherwise noted.
- Top of all water mains to have a minimum of 3'-6" cover unless otherwise noted.
- All valves shall be strapped to tees in accordance with standard details.
- Block all fittings with concrete, see standards bound in specifications.
- Bury line elevations on fire hydrants shall be set in the elevations shown on the drawings. All fire hydrants shall be strapped and buttressed with concrete in accordance with standard details. Soil around the fire hydrant to be compacted in accordance with Section 5-15 of the Standard Specifications.
- All sewer mains shall be C.S.P.X., V.C.P.X., or A.C.P. Class 2400 unless otherwise noted.
- The contractor shall provide a joint in all sewer mains within 2'-0" of exterior manhole walls.
- All manholes shall be 4'-0" inside diameter, unless otherwise noted.
- All pipe elevations shown are invert elevations.
- All horizontal and vertical controls are based on Maryland State Grid Systems.



PROFILE
Scale: Horiz. 1"=100'
Vert. 1"=10'



SOFT SHADE WAY
Scale: Horiz. 1"=100'
Vert. 1"=10'



PURDUM & JESCHKE
ENGINEERS
1023 N. CALVERT ST.
BALTIMORE, MARYLAND

DEPARTMENT OF PUBLIC WORKS
HOWARD COUNTY, MARYLAND
8-2-77
DATE

CONTRACT NO. 2732-D-1485

PLAN AND PROFILE
OF SEWER AND WATER EXTENSIONS

VILLAGE OF OWEN BROWN
SECTION 5 AREA 3
WATER AND SEWER EXTENSION
ELECTION DISTRICT NO. 6 - GUILFORD

DRAWING NO. 1
SCALE As Shown
DESIGNED: RHB
DRAFTED: ARZ
CHECKED: TAF

WS 732 W-5/1