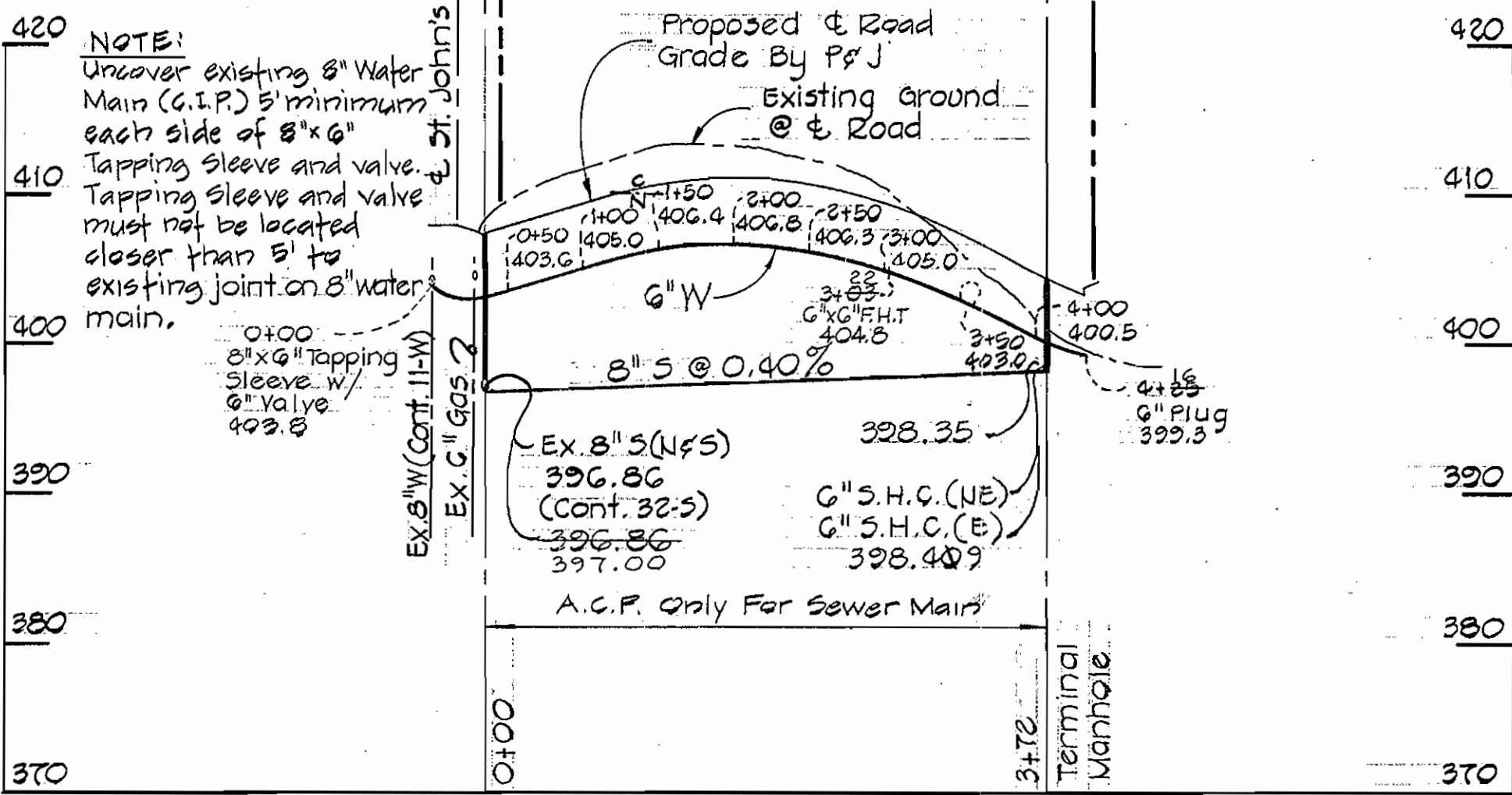
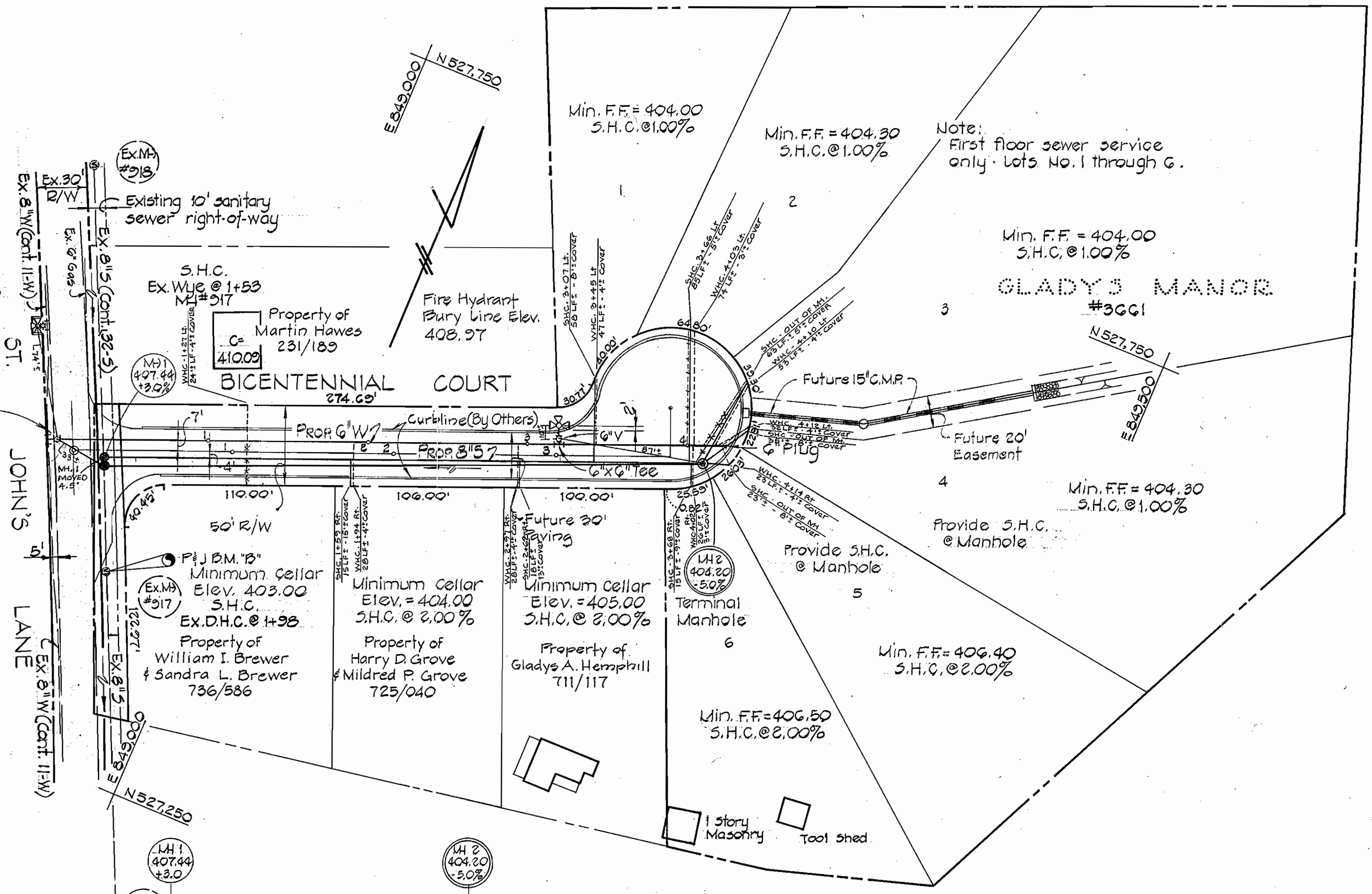


**BENCH MARKS**  
 P & J B.M. "A" Elev. 404.23  
 X-Cut in rim of existing sewer manhole #916, east side of St. John's Lane.  
 P & J B.M. "B" Elev. 405.93  
 X-Cut in rim of existing sewer manhole #917, east side of St. John's Lane.

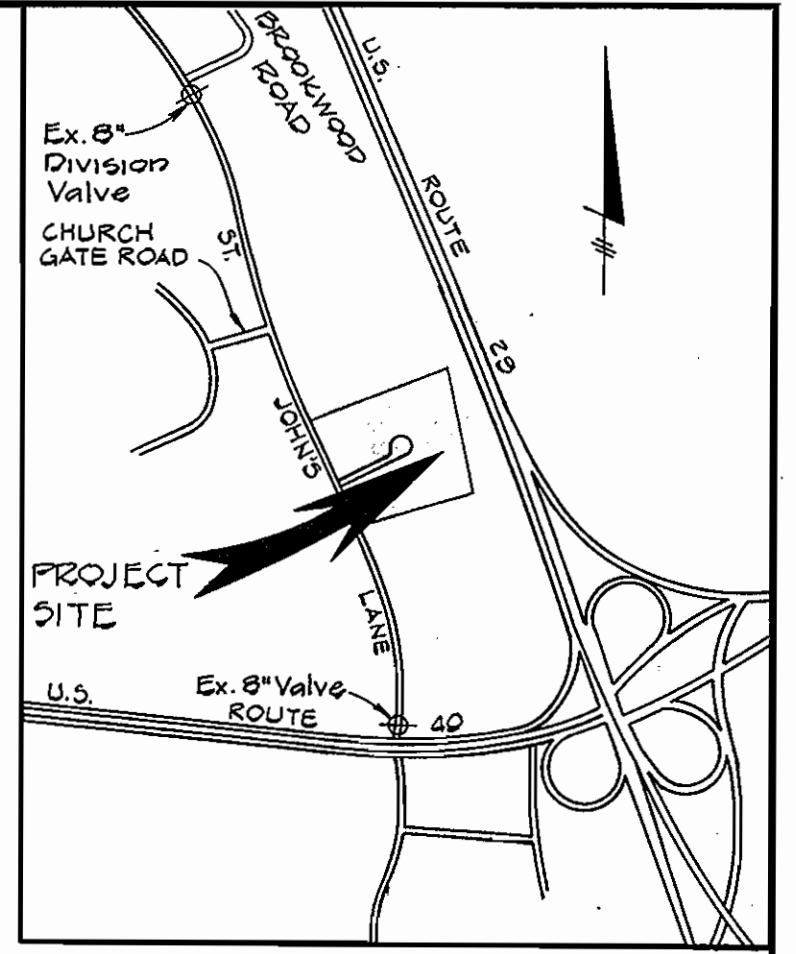
**NOTE:**  
 Uncover existing 8" Water Main (G.I.P.) 5' minimum each side of 8"x6" Tapping Sleeve and valve. Tapping Sleeve and valve must not be located closer than 5' to existing joint on 8" Water Main.  
 Provide 8"x6" Tapping Sleeve w/ 6" Valve

Lump Sum Item No. A-10  
 Build Manhole No. 1 over and connect to existing 8" sewer. Form channel to meet existing field conditions.



QUANTITIES	
	ESTIMATED AS BUILT
8" SEWER	372 L.F. 368 L.F.
6" SEWER	300 L.F. 311 L.F.
MANHOLES	17.5 Y.F. 525 Y.F.
6" WATER	435 L.F. 449 L.F.
3/4" WATER	300 L.F. 335 L.F.
FIRE HYD.	1 EACH 1 EACH

6" & 8" Sewer - ACP - Class 2400 Type 2 - CERTAIN TEED  
 6" WATER - DIP - Class 53 - Griffin



VICINITY MAP  
 Scale: 1" = 1,200'

**SEWER MORATORIUM**  
 The lots as shown on this plan are located within drainage area served by the Patapsco Treatment Plant. Sewerage Treatment Capacity is not available to these lots. S.H.C. shall not be connected and operational until Treatment Capacity allocated for these lots by Howard County.

**GENERAL NOTES**

- Approximate locations of existing mains are shown. The Contractor shall take all necessary precautions to protect existing mains and services and maintain uninterrupted supply. Any damage incurred shall be repaired immediately.
- All pipe elevations shown are  $\odot$  invert elevations.
- Clear all utilities by a minimum of 6". Clear all poles 2'-0" minimum or tunnel as required.
- For details not shown on the drawings see standards bound in specifications.
- Contractor shall locate existing utilities in advance of construction operations in the vicinity of proposed utilities.
- Contractor shall notify the following utilities or agencies at least five (5) days before starting work shown on these plans.  
 Baltimore Gas and Electric Company - Underground Electric Distribution Engineering - "Damage Control" - 234-5691  
 Baltimore Gas and Electric Company - Underground Gas Distribution Engineering - 559-0100  
 Chesapeake and Potomac Telephone Co. - 725-9976  
 Miss Utility - 1-800-393-3648
- All water mains to be C.I.P., D.I.P., or A.C.P. unless otherwise noted.
- Top of all water mains to have a minimum of 3.5 feet cover unless otherwise noted.
- All valves shall be strapped to tees in accordance with standard details.
- Block all fittings with concrete, see standards bound in specifications.
- Bury line elevations on fire hydrants shall be set to the elevations shown on the drawings. All fire hydrants shall be strapped and buttressed with concrete in accordance with standard details. Soil around the fire hydrant to be compacted in accordance with Section 5-15 of the Standard Specifications.
- All sewer mains shall be C.S.P.X., V.C.P.X., or A.C.P. Class 2400 unless otherwise noted.
- The contractor shall provide a joint in all sewer mains within 2'-0" of exterior manhole walls.
- All manholes shall be 4'-0" inside diameter unless otherwise noted.
- Horizontal and vertical control is based on the Maryland State Grid Coordinate System.



**PURDUM & JESCHKE**  
 ENGINEERS  
 1023 N. CALVERT ST.  
 BALTIMORE, MARYLAND

**DEPARTMENT OF PUBLIC WORKS**  
 HOWARD COUNTY, MARYLAND  
 P.J. Regan, Director of Public Works  
 DATE: 4-15-77  
 W.O. Johnson, Chief-Bureau of Engineering  
 DATE: 4-14-77

CONTRACT NO. 730-D - W&S

PLAN AND PROFILE  
 OF SEWER AND WATER MAINS

GLADYS MANOR  
 WATER AND SEWER EXTENSIONS  
 ELECTION DISTRICT NO. 2 - ELLICOTT CITY

**DRAWING**  
 NO. 1  
 OF 1

**SCALE**  
 AS SHOWN

DESIGNED: RDB  
 DRAFTED: RDB  
 CHECKED: TAF  
 MAP: 233-42

WS 730 W&S/1