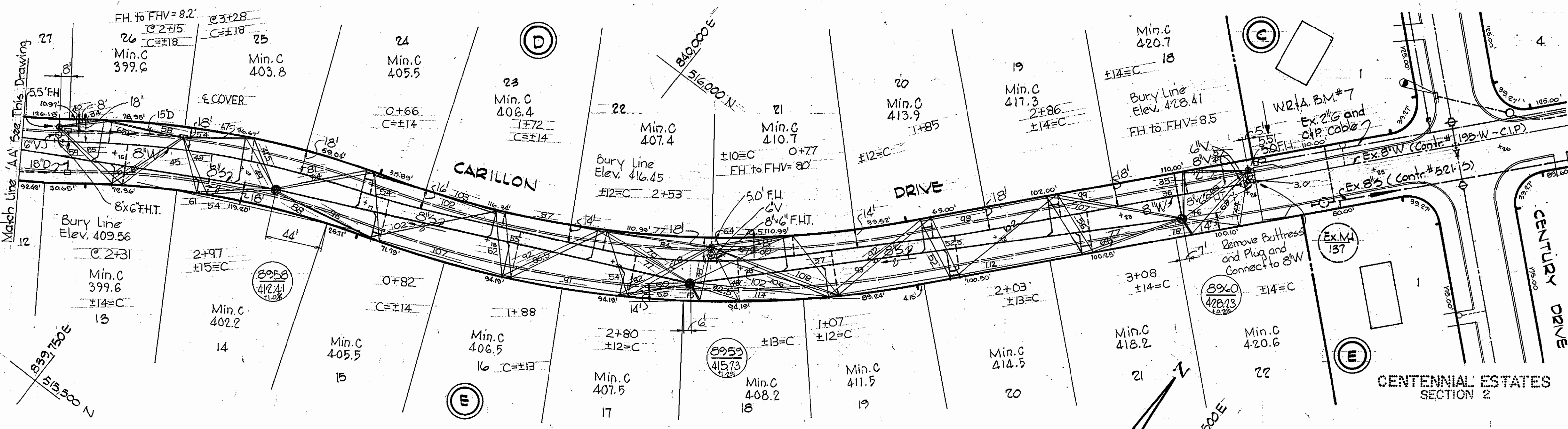


VICINITY MAP
Scale: 1" = 2000'

GENERAL NOTES

- Approximate location of existing mains are shown. The Contractor shall take all necessary precautions to protect existing mains and services and maintain uninterrupted supply. Any damage incurred shall be repaired immediately.
- All pipe elevations shown are invert elevations.
- The Contractor shall locate existing utilities a minimum of two weeks in advance of construction operations in vicinity of utilities.
- The Contractor shall notify the following utilities or agencies at least five (5) days before starting work shown on these plans:
Baltimore Gas and Electric Company
Underground Electric Distribution Engineering Damage Control - 234-5691
Underground Gas Distribution Engineering - 559-0100
Chesapeake and Potomac Telephone Company - 727-9976
- For all standard details see standards bound in specifications.
- All horizontal and vertical controls are based on Maryland State Datum.
- Clear all utilities by a minimum of 6'; clear all poles by a minimum of 2'-0" or tunnel as required.
- All water mains shall be C.I.P., D.I.P., or A.C.P. unless otherwise noted.
- All water mains shall have a minimum of 3/2' cover.
- Block all fittings with concrete, see standards bound in specifications.
- All valves shall be strapped to tees where applicable in accordance with the standard Details.
- Payment for strapping fire hydrants and valves will be included in unit price bid for furnishing and laying water mains.
- All fire hydrants shall be strapped and buttressed in accordance with standard details. Soil around the fire hydrants shall be compacted in accordance with Section 5-15 of the standard specifications.
- Bury line elevations on fire hydrants shall be set to elevations shown on drawings.
- All W.H.C.'s shall be 3/4" diameter unless otherwise noted.
- Water services shall be for inside meter setting.
- All sewer mains shall be C.S.P.X., V.C.P.X. or A.C.P. Class 2400 unless otherwise noted.
- All manholes shall be 4'-0" inside diameter.
- The Contractor shall provide a joint in all sewer mains within 2'-0" of exterior manhole walls.



PLAN
Scale: 1" = 50'

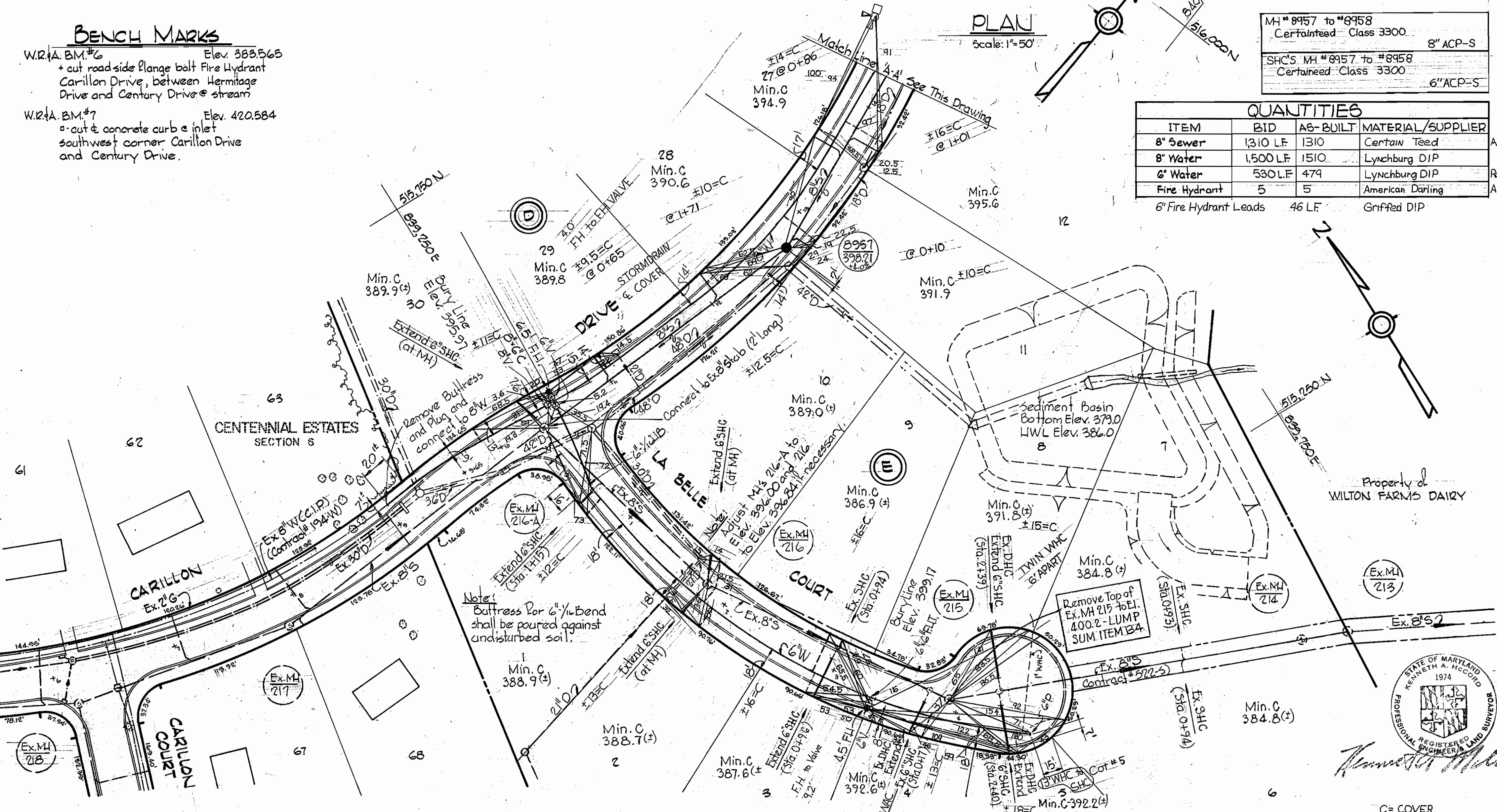
BENCH MARKS

W.R.T.A. BM #6 Elev. 388.565
+ cut roadside flange bolt Fire Hydrant
Carillon Drive, between Heritage
Drive and Century Drive @ stream

W.R.T.A. BM #7 Elev. 420.584
+ cut & concrete curb & inlet
southwest corner Carillon Drive
and Century Drive.

MH # 8957 to #8958 Certainited - Class 3300	8" ACP-S
SHC'S MH # 8957 to #8958 Certainited - Class 3300	6" ACP-S

ITEM	BID	AS-BUILT	MATERIAL/SUPPLIER
8" Sewer	1310 LF	1310	Certain Teed
8" Water	1500 LF	1510	Lynchburg DIP
6" Water	530 LF	479	Lynchburg DIP
Fire Hydrant	5	5	American Darling
6" Fire Hydrant Leads	46 LF		Griffed DIP



WS 729 W-5/1

WHITMAN, REQUARDT & ASSOCIATES
ENGINEERS
1304 ST. PAUL ST.
BALTIMORE, MARYLAND

DEPARTMENT OF PUBLIC WORKS
HOWARD COUNTY, MARYLAND
3-19-78
DIRECTOR OF PUBLIC WORKS - DATE

W.O. Libert 3-17-78
CHIEF-BUREAU OF ENGINEERING - DATE

CONTRACT NO. 2729 DWBS

PLAN OF
WATER AND SEWER MAINS

ELECTION DISTRICT
ELLCOTT CITY NO.2

DRAWING
NO. 1
OF 2
SCALE
AS
SHOWN

W.O. 7184-26

AS-BUILT 9-19-78

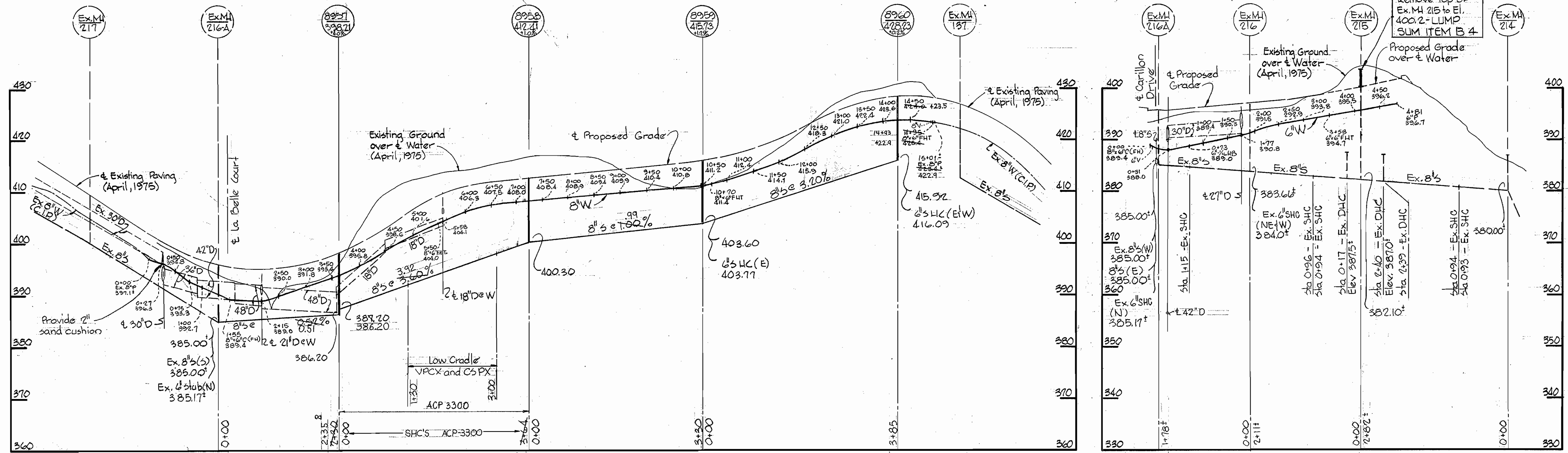
FB# 5451, 5453, 5456, 5519, 5791, 5811, 5934 and 5844
MARCH 3, 1978

CARILLON DRIVE

Note:
Adjust M.H.'s 216-A to Elev. 396.00
and 216 to Elev. 396.84 if necessary.

LA BELLE COURT

Remove Top of
Ex. M.H. 215 to El.
400.2 - LUMP
SUM ITEM B.4



Kenneth M. Melrod

Chateau Valley
Section I, Area 4
Contract No. 2729 DW/b

WHITMAN, REQUARDT & ASSOCIATES ENGINEERS 1304 ST. PAUL ST. BALTIMORE, MARYLAND	DEPARTMENT OF PUBLIC WORKS HOWARD COUNTY, MARYLAND 3-19-78 DIRECTOR OF PUBLIC WORKS - DATE	CONTRACT NO. 2729DW8S W.O. Libert 3-17-78 CHIEF-BUREAU OF ENGINEERING - DATE	PROFILES OF WATER AND SEWER MAINS	ELECTION DISTRICT ELLICOTT CITY NO. 2	DRAWING NO. 2 OF 2 SCALE H:1"=100' V:1"=10'
---	---	--	--------------------------------------	--	--

W. O. 7184-2b

AS-BUILT 9-19-78

MARCH 3, 1978

WS 729 W-5/2

BRUNING 44-510 18397