

VICINITY MAP
Scale: 1"=200'

GENERAL NOTES

1. Approximate location of existing mains are shown. The Contractor shall take all necessary precautions to protect existing mains and services and maintain uninterrupted supply. Any damage incurred shall be repaired immediately.
2. All pipe elevations shown are invert elevations.
3. The Contractor shall locate existing utilities a minimum of two weeks in advance of construction operations in vicinity of utilities.
4. Clear all utilities by a minimum of 6".
5. For all standard details see standards bound in Specifications.
6. All horizontal and vertical controls are based on Maryland State Datum.
7. Trees are to be protected from damage to maximum extent. Trees located within the construction strip are not to be removed or damaged by the Contractor.
8. All manholes shall be 4'-0" inside diameter.
9. The Contractor shall provide a joint in all sewer mains within 2'-0" of exterior manhole walls.
10. All water mains to have a minimum of 3/2' cover unless otherwise noted.
11. Block all fittings with concrete see standards bound in Specifications.
12. Bury Line elevations on fire hydrants shall be set to elevations shown on drawings.
13. All fire hydrants shall be strapped and buttressed in accordance with standard details.
14. Cost of strapping fire hydrants and valves shall be included in unit price bid for furnishing and laying of water mains.
15. All W.H.C. shall be 3/4" Diameter unless otherwise noted.
16. Contractor shall notify the following utilities or agencies at least (5) five days before starting work shown on these plans:
 - a) Chesapeake and Potomac Telephone Company - (725-9976)
 - b) Baltimore Gas and Electric Company - (underground Electric Distribution Engineering Damage Control) 234-5691.
17. Manholes designated W.T. in profiles shall have watertight frame and cover.

| QUANTITIES | |
|---------------|----------|
| ITEM | QUANTITY |
| 8" Sewer | 1096 LF. |
| 8" Water | 170 LF. |
| 6" Water | 1840 LF. |
| Fire Hydrants | 3 |

Village of Owen Brown
Section 1, Area 2
Parcel D-1, Phase 2
Contract No. 2725 D-W15

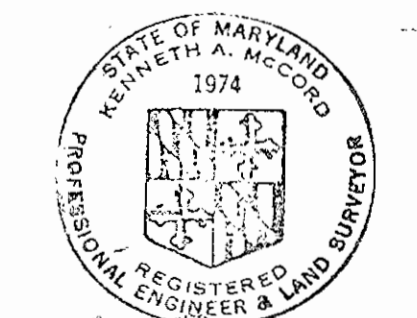
BENCH MARKS

W.R. & A. B.M. # 69+92.59 Elev. 335.77
& Cradlerock Way Sta. 69+92.59.

W.R. & A. B.M. # 73+91.72 Elev. 330.36
& Cradlerock Way Sta. 73+91.72

W.R. & A. B.M. # 77+87.25 Elev. 324.08
& Cradlerock Way Sta. 77+87.25

PLAN
Scale: 1"=50'

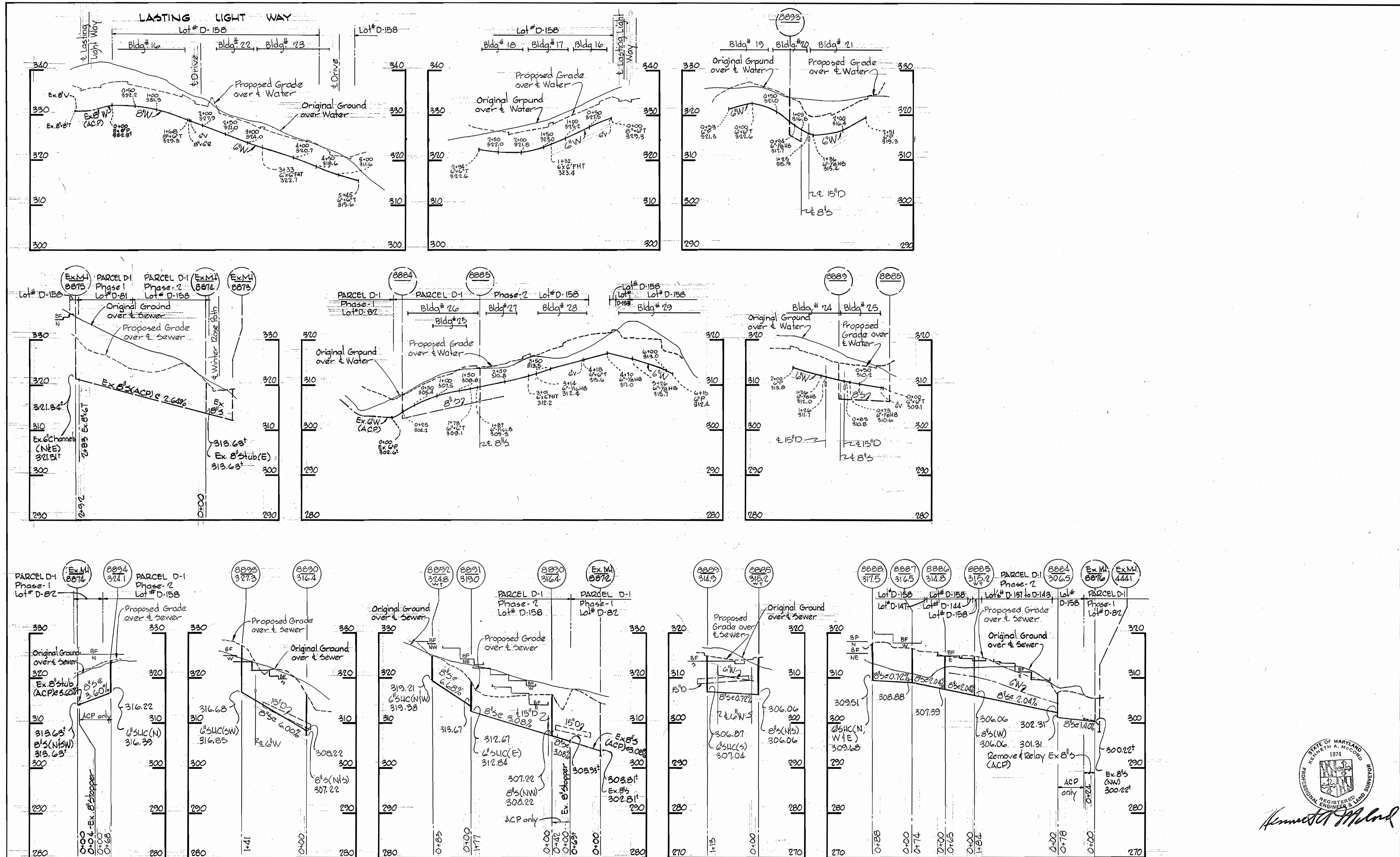


WS 725 W-S/1

| | | | | | | | |
|---|---|--|-------------------------|--------------------------------|---|--------------------------|----------------------|
| WHITMAN, REQUARDT & ASSOCIATES ENGINEERS 1304 ST. PAUL ST. BALTIMORE, MARYLAND | DEPARTMENT OF PUBLIC WORKS HOWARD COUNTY, MARYLAND P. J. Pagan 2-28-77 DIRECTOR OF PUBLIC WORKS - DATE | W. O. P. Liberty 2-25-77 CHIEF-BUREAU OF ENGINEERING - DATE | CONTRACT NO. 2725-D-WBS | PLAN OF WATER & SEWER MAINS | COLUMBIA VILLAGE OF OWEN BROWN ELECTION DISTRICT GUILFORD NO. 6 | DRAWING NO. 1 OF 2 | SCALE AS SHOWN |
|---|---|--|-------------------------|--------------------------------|---|--------------------------|----------------------|

WS 725 W-5/2

BRUNING 44-510 18392



Kenneth A. McLeod

Village of Owen Brown
 Section 1, Area 2
 Parcel D-1, Phase-2
 Contract No. 2725 DW&S

| | | | | | |
|--|---|--|---|--|--|
| WHITMAN, REQUARDT & ASSOCIATES ENGINEERS 1304 ST. PAUL ST. BALTIMORE, MARYLAND | DEPARTMENT OF PUBLIC WORKS HOWARD COUNTY, MARYLAND <i>2-25-77</i> DIRECTOR OF PUBLIC WORKS - DATE | CONTRACT NO. 2725 DW&S <i>W.O. Gilbert 2-25-77</i> CHIEF-BUREAU OF ENGINEERING - DATE | PROFILE OF WATER & SEWER MAINS | COLUMBIA VILLAGE OF OWEN BROWN ELECTION DISTRICT GUILFORD NO. 6 | DRAWING NO. 2 OF 2 SCALE H: 1"=100' V: 1"=10' |
|--|---|--|---|--|--|

W. O. 2468

AS-BUILT 10-26-78

FEBRUARY 17, 1977