

VICINITY MAP  
Scale: 1" = 2,000'

GENERAL NOTES

- APPROXIMATE LOCATION OF EXISTING MAINS ARE SHOWN. THE CONTRACTOR SHALL TAKE ALL NECESSARY PRECAUTIONS TO PROTECT EXISTING SERVICES AND MAINTAIN UNINTERRUPTED SUPPLY. ANY DAMAGE INCURRED SHALL BE REPAIRED IMMEDIATELY.
- ALL PIPE ELEVATIONS SHOWN ARE INVERT (I) ELEVATIONS.
- THE CONTRACTOR SHALL LOCATE EXISTING UTILITIES A MINIMUM OF TWO WEEKS IN ADVANCE OF CONSTRUCTION OPERATIONS IN VICINITY OF UTILITIES.
- FOR ALL STANDARD DETAILS, SEE STANDARDS BOUND IN SPECIFICATIONS.
- THE CONTRACTOR SHALL PROVIDE A JOINT IN ALL SEWER MAINS WITHIN 2'-0" OF EXTERIOR MANHOLE WALLS.
- ALL HORIZONTAL AND VERTICAL CONTROLS ARE BASED ON MARYLAND STATE DATUM.
- ALL MANHOLES SHALL BE 4'-0" INSIDE DIAMETER UNLESS OTHERWISE NOTED.
- ALL WATER MAINS TO HAVE A MIN. OF 3'-1/2' COVER UNLESS OTHERWISE NOTED.
- BLOCK ALL FITTINGS WITH CONCRETE, SEE STANDARDS BOUND IN SPECIFICATIONS.
- BUILD ALL MANHOLES TO EXISTING GRADE UNLESS OTHERWISE NOTED.
- ALL FIRE HYDRANTS SHALL BE STRAPPED TO TEES AND SHALL BE BUTTRESSED WITH CONCRETE IN ACCORDANCE WITH STANDARD DETAILS.
- CLEAR ALL UTILITIES BY A MINIMUM OF 6 INCHES.
- ALL SEWERS SHALL BE V.C.P.X., C.S.P.X. OR A.C.P. CLASS 2400, UNLESS OTHERWISE NOTED.
- WHERE SEWER SERVICE CONNECTIONS ENTER MANHOLES, INVERTS SHALL BE CHANNELIZED TO ACCOMMODATE FLOW.
- PROFILE STATIONS SHALL BE ADJUSTED AS NECESSARY TO CONFORM TO PLAN DIMENSIONS.
- BURY LINE ELEVATIONS ON FIRE HYDRANTS SHALL BE SET TO ELEVATIONS SHOWN ON DRAWINGS.
- COST OF STRAPPING HYDRANTS AND VALVES TO TEES SHALL BE INCLUDED IN THE UNIT PRICES BID FOR FURNISHING AND LAYING WATER MAINS.

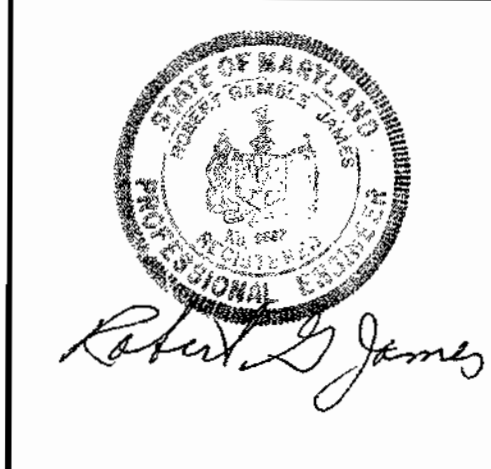
QUANTITIES	
ITEM	QUANTITY
8" Sewer	3350 3270
8" Water	11005
6" Water	600 680
Fire Hydrants	3

NOTE:  
 1. Elevations shown on each lot indicate the minimum basement floor elevation for said lot that can be gravity served by the 8-inch sanitary line to be constructed under this contract.  
 2. Lot 2 of Block 'A' & Property of W.A. Harding shall have a 3/4" Single Water House Connection. All other lots shall be served by 1" Double Water House Connections.

PLAN  
Scale: 1"=50'

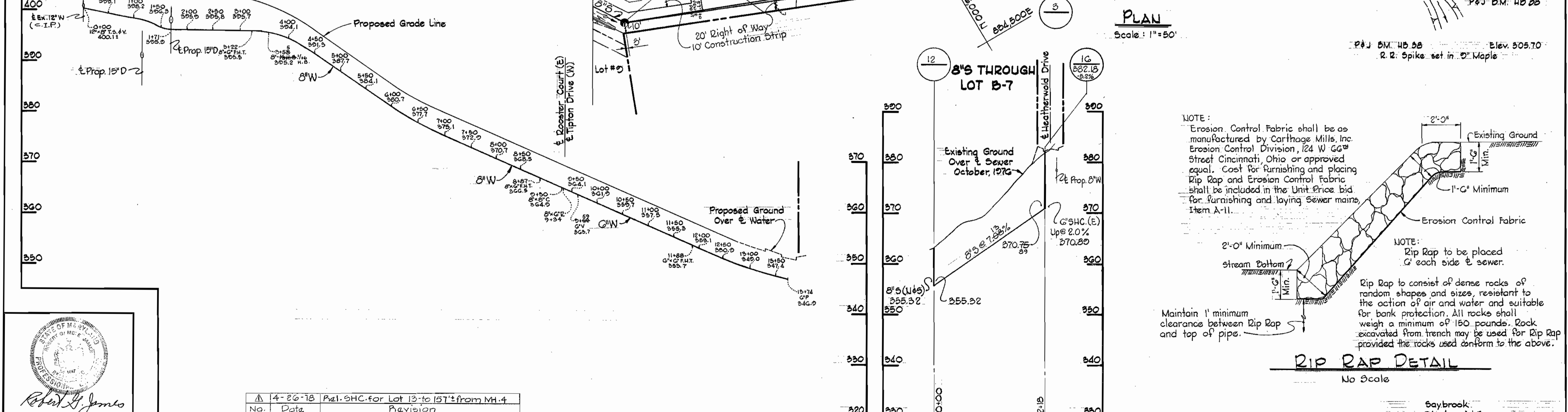
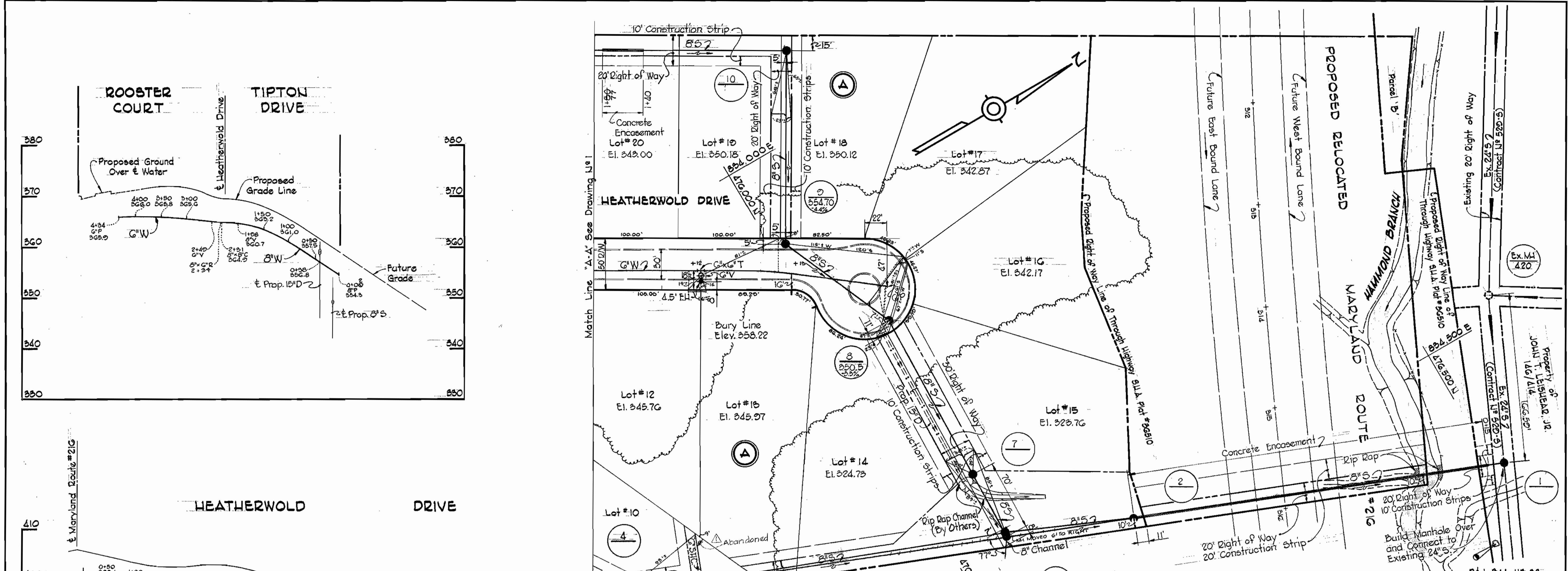
Sewer: 8" ACP Class 2400 - JOHNS MANVILLE  
 Water: 6" & 8" ACP Class 150 - JOHNS MANVILLE

Saybrook  
 Blocks A & B  
 Contract N#2712-D-W&S



CENTURY ENGINEERING, INC. CONSULTING ENGINEERS - PLANNERS TOWSON, MARYLAND 21204	DEPARTMENT OF PUBLIC WORKS HOWARD COUNTY, MARYLAND 1-4-76 DATE	CONTRACT NO. 2712-D-W&S 1-4-76 DATE	PLAN OF WATER AND SEWER MAINS AND VICINITY MAP	ELECTION DISTRICT GUILFORD NO. 6	DRAWING NO. 1	SCALE AS SHOWN
					OF 3	

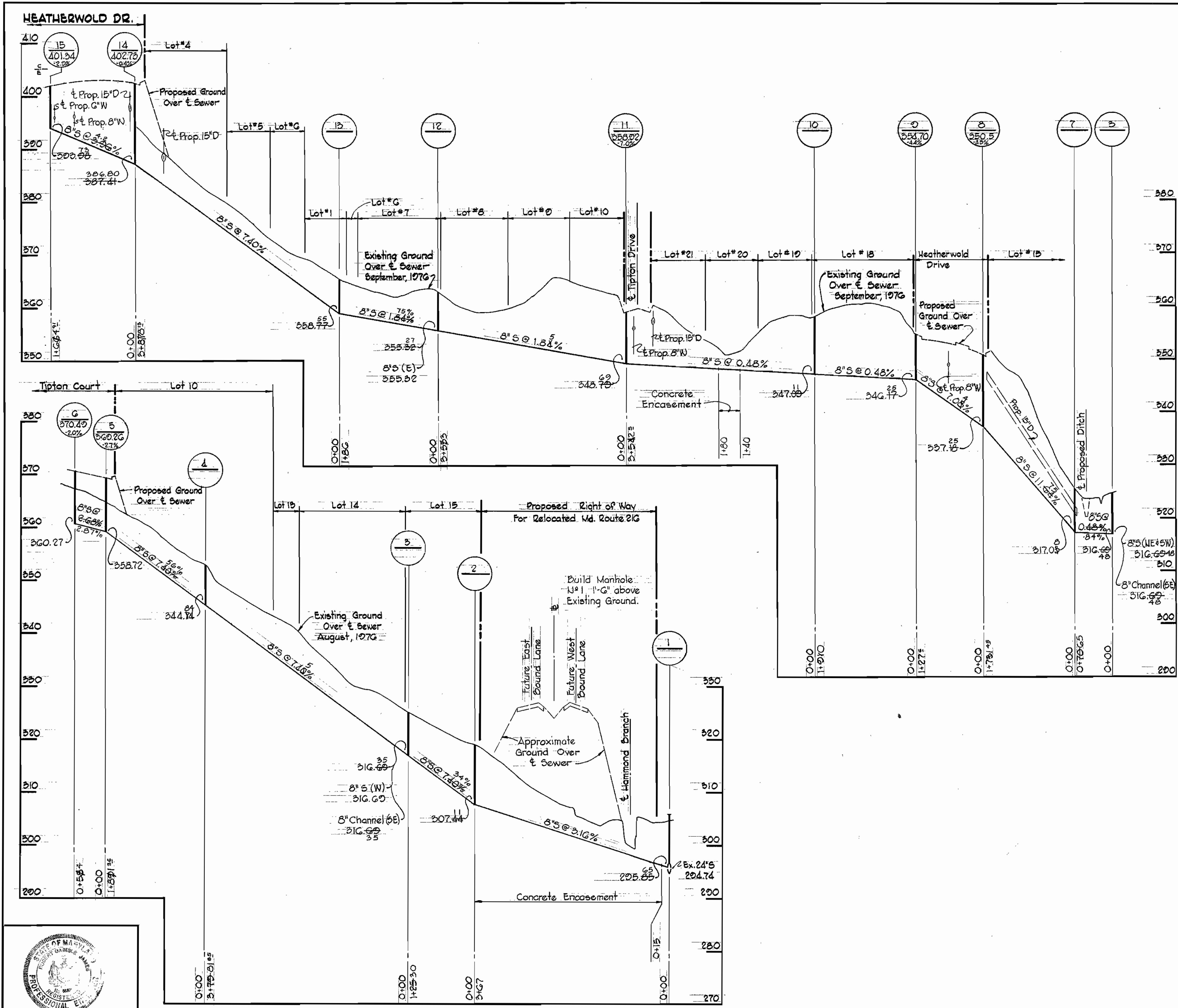





PROFILES		Scale: Hor. 1"=100'	
No.	Date	Description	Revision
1	4-26-78	Pal. SHC for Lot 13 to 15' from MH.4	

CENTURY ENGINEERING, INC. CONSULTING ENGINEERS - PLANNERS TOWSON, MARYLAND, 21204	DEPARTMENT OF PUBLIC WORKS HOWARD COUNTY, MARYLAND P. J. Pagan DIRECTOR OF PUBLIC WORKS	CONTRACT NO. 2712-D-W&S W. O. Gilbert CHIEF-BUREAU OF ENGINEERING	PLAN AND PROFILES OF WATER AND SEWER MAINS	ELECTION DISTRICT GUILFORD NO. 6	DRAWING NO. 2	SCALE AS SHOWN
					OF 3	

7/12-WS/2



  
 Robert L. James

Saybrook  
 Blocks A & B  
 Contract U# 2712-D-W&S

<b>CENTURY ENGINEERING, INC.</b> CONSULTING ENGINEERS - PLANNERS TOWSON, MARYLAND, 21204	<b>DEPARTMENT OF PUBLIC WORKS</b> HOWARD COUNTY, MARYLAND <i>P. J. Regan</i> 1-4-76 DIRECTOR OF PUBLIC WORKS DATE	<b>CONTRACT NO. 2712-D-W&amp;S</b> <i>W. O. Albert</i> 1-7-76 CHIEF - BUREAU OF ENGINEERING DATE	<b>PROFILES OF WATER AND SEWER MAINS</b>	<b>ELECTION DISTRICT GUILFORD NO. 6</b>	<b>DRAWING NO. 3 OF 3</b> <b>SCALE H:1"=100' V:1"=10'</b>
--	--	--	--	---	--

WS 712-WS/3



WHITMAN, REQUARDT & ASSOCIATES  
ENGINEERS  
1304 ST. PAUL ST.  
BALTIMORE, MARYLAND

DEPARTMENT OF PUBLIC WORKS  
HOWARD COUNTY, MARYLAND  
3-2-77

CONTRACT NO. 2711-D-W8S

PLAN AND PROFILES OF  
WATER AND SEWER MAINS

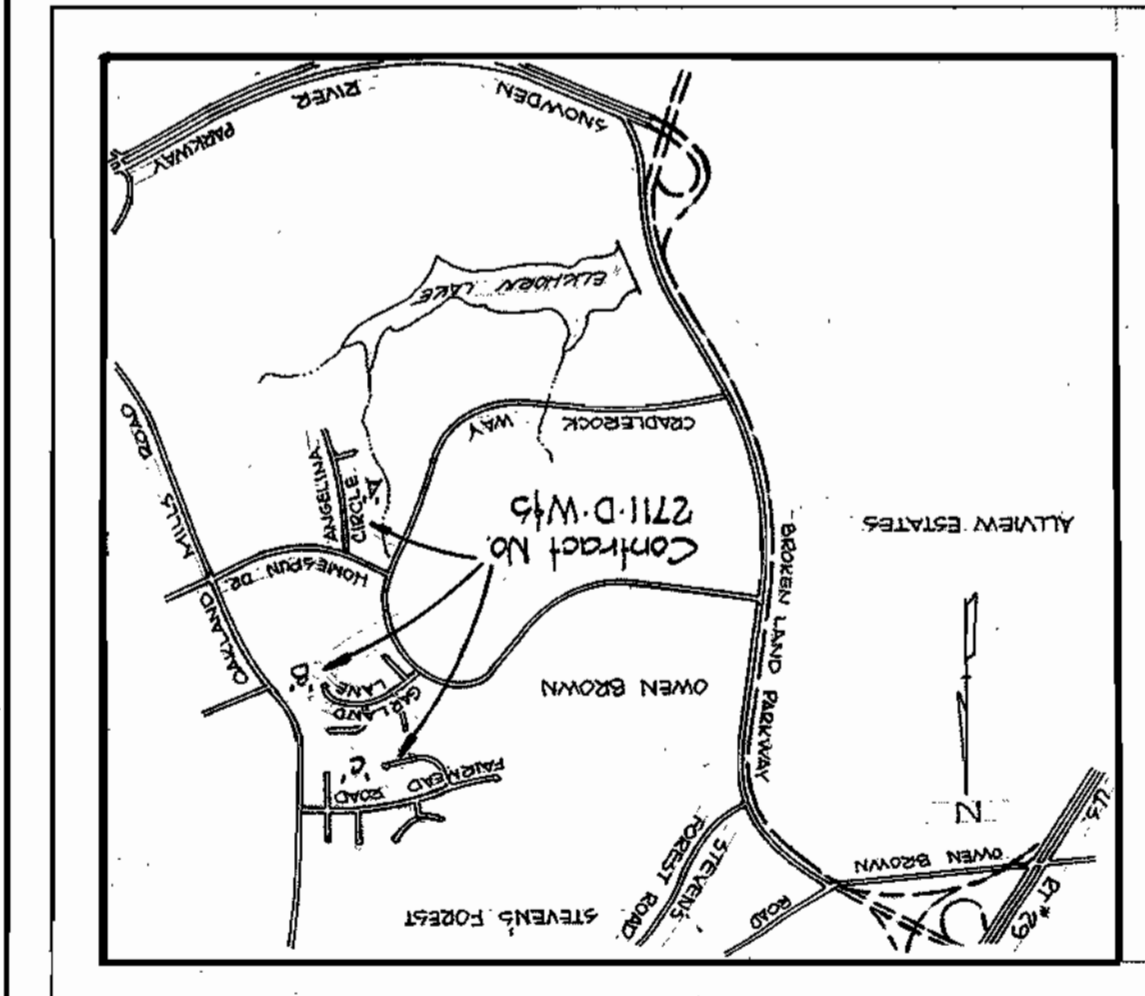
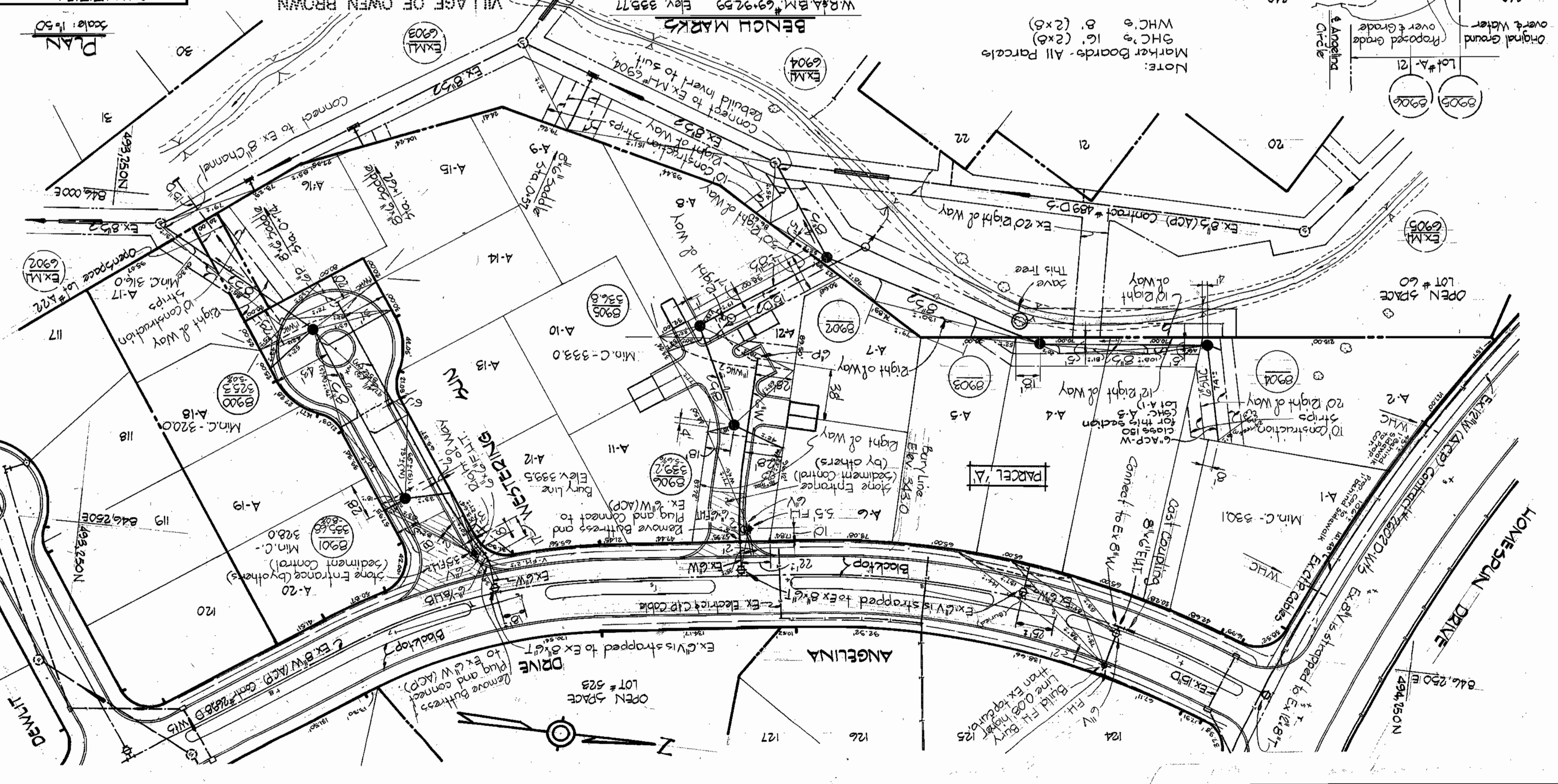
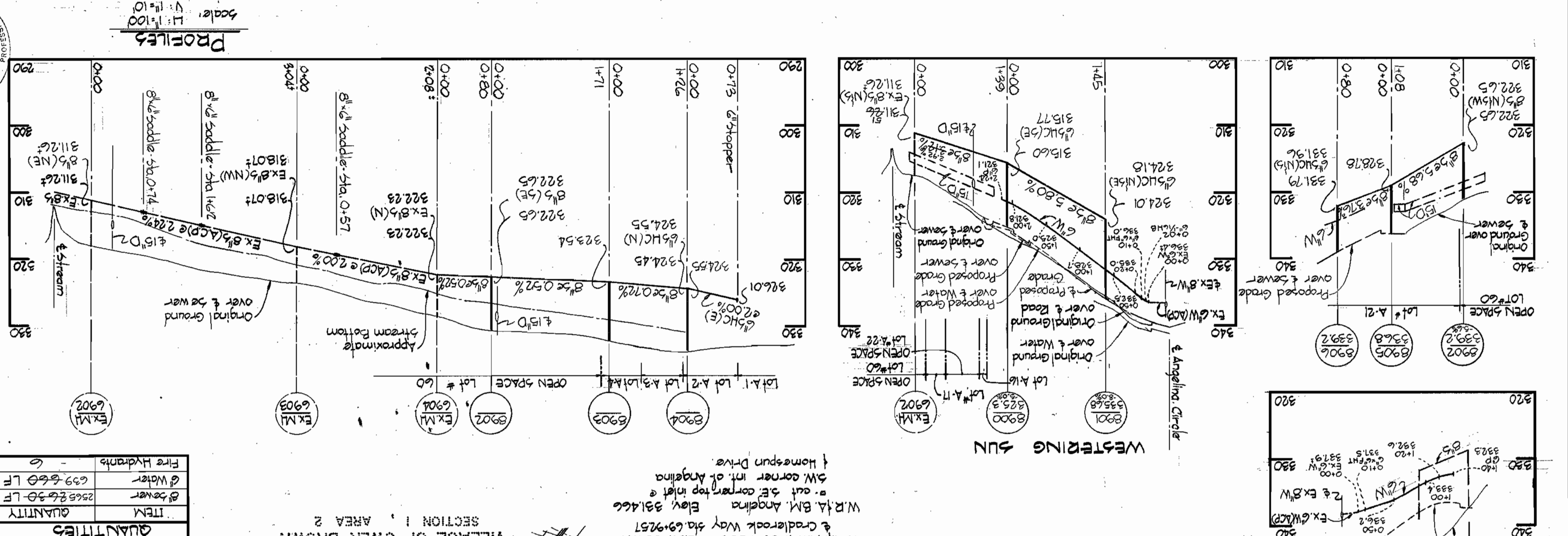
COLUMBIA  
VILLAGE OF OWEN BROWN  
ELECTION DISTRICT GUILFORD NO. 6

DRAWING NO. 3  
SCALE AS SHOWN  
F.B.# 5460



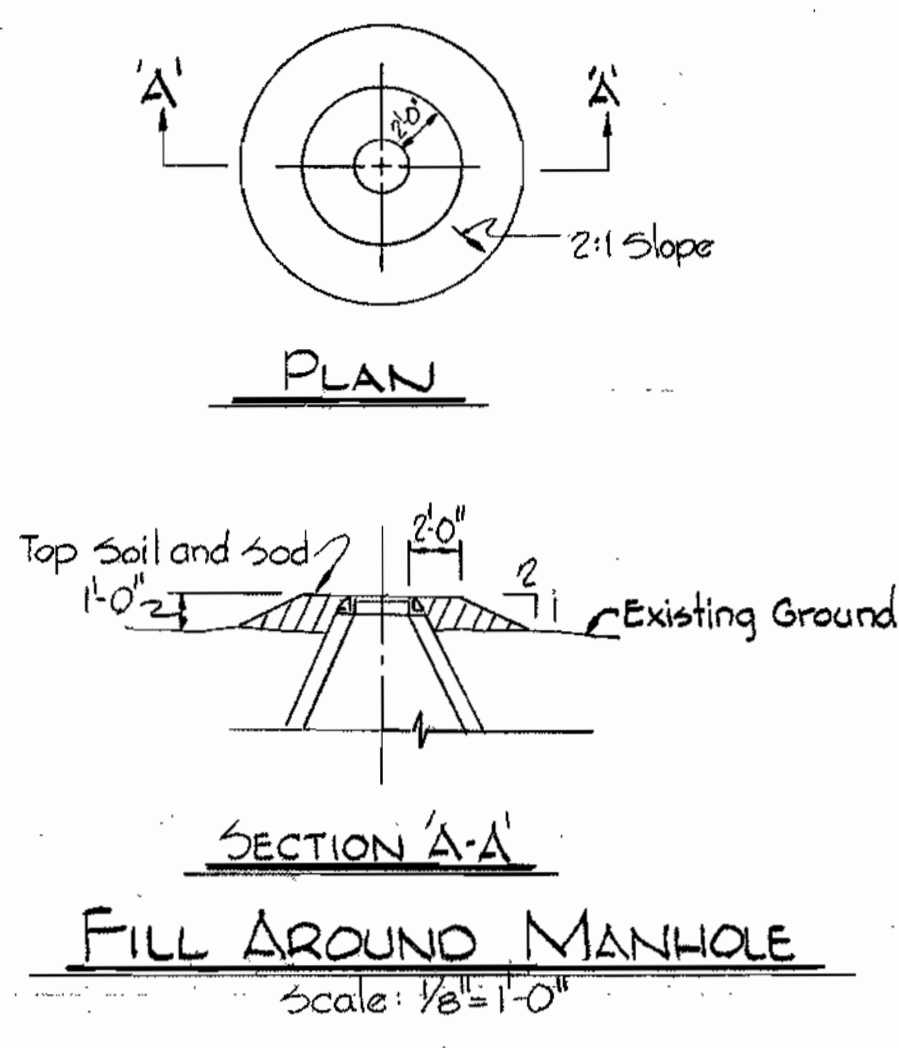
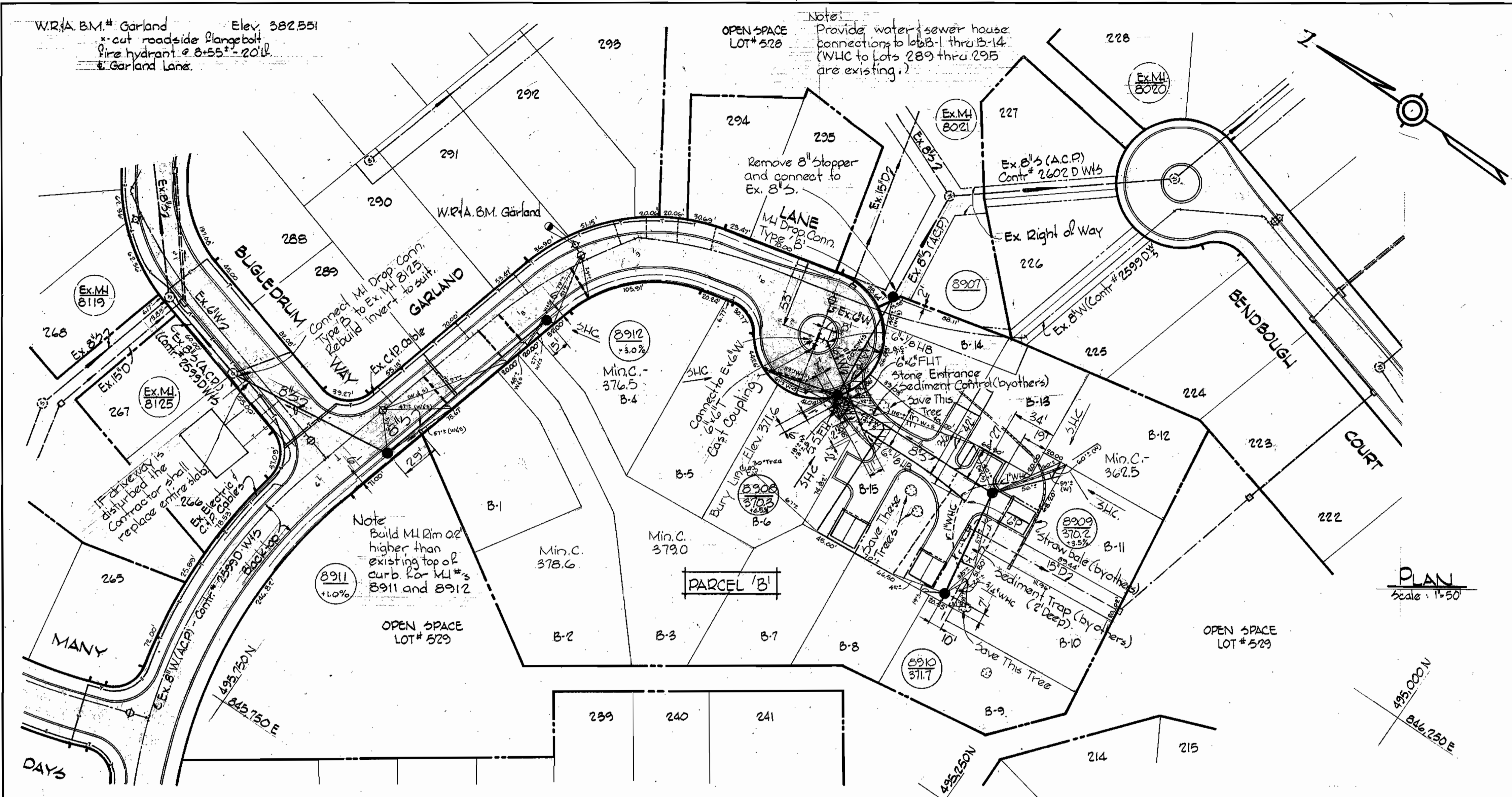
Village of Owen Brown  
Parcels A, B and C  
Section 4, Area 1  
Contract No. 2711-D-W8S

- Approximate location of existing mains are shown. The Contractor shall take all necessary precautions to protect existing mains and services and maintain uninterrupted supply. Any damage incurred shall be repaired immediately.
- All pipe elevations shown are invert elevations.
- The Contractor shall locate existing utilities a minimum of two weeks in advance of construction operations in vicinity of utilities.
- Clear all utilities by a minimum of 6".
- For all standard details see standards bound in specifications.
- All horizontal and vertical controls are based on Maryland State Datum.
- Trees are to be protected from damage to maximum extent. Trees located within the construction strips are not to be removed or damaged by the Contractor.
- Original ground over & water and/or sewer was taken from contour maps made by aerial photography.
- The Contractor shall verify the following utilities or agencies at least five (5) days before starting work shown on these plans:  
(a) Baltimore Gas and Electric Company - Underground Electric Distribution  
(b) Chesapeake and Potomac Telephone Company - 727-9976  
(c) Engineering "Damage Control" - 234-5691
- All water mains shall be CIP, DIP or ACP unless otherwise noted.
- All water mains to have a minimum of 3/2 cover.
- Block all fittings with concrete, see standards bound in specifications.
- All valves shall be strapped to trees where applicable in accordance with the standard details.
- Payment for strapping, fire hydrants and valves will be included in unit price bid for furnishing and laying water mains.
- All fire hydrants shall be strapped and buttressed in accordance with standard details. Soil around the fire hydrants shall be compacted in accordance with section 515 of the standard specifications.
- Bury line elevations on fire hydrants shall be set to elevations shown on drawings.
- All W.L.C.s shall be 2" diameter unless otherwise noted.
- Water services shall be brought to meter settings.
- All sewer mains shall be C5PX, VC5PX, or A.C.P. Class 2400 unless otherwise noted.
- All manholes shall be 4'-0" inside diameter.
- The Contractor shall provide a joint in all sewer mains within 2' of exterior manhole walls.
- Sewer - A.C.P. Class 2400 II - Johns Manville  
Water - A.C.P. Class 150 - Johns Manville



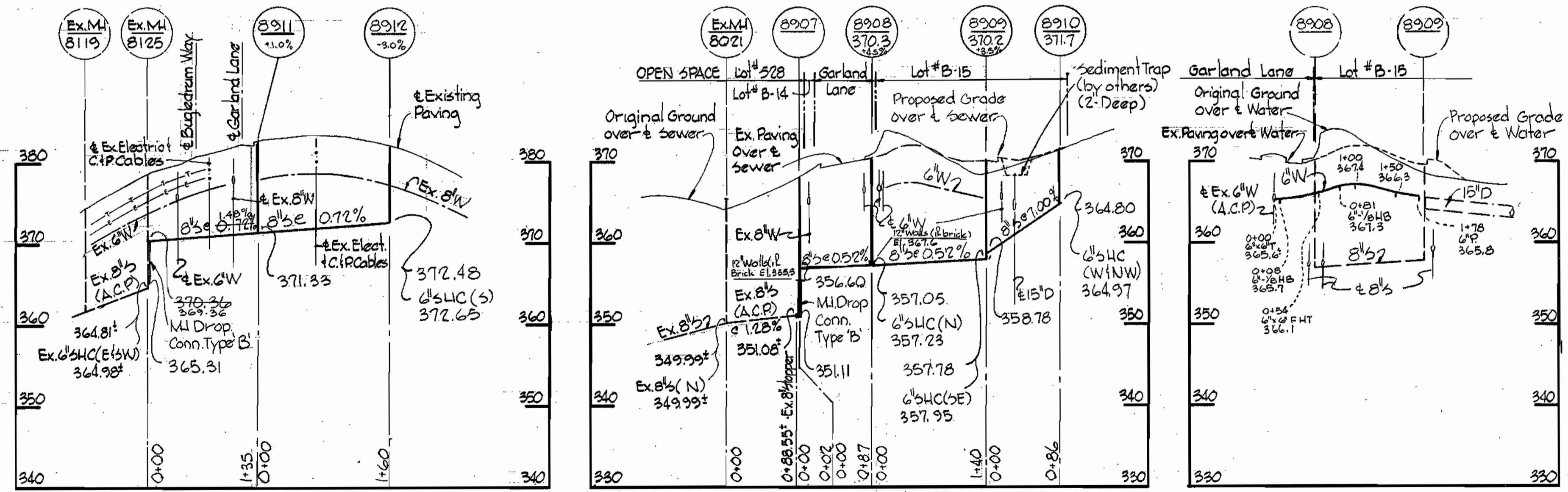
DEWITT WAY  
WESTERING SUN  
ANGELINA  
HOME-SPAN DRIVE





PLAN  
Scale: 1"=50'

BUGLEDRUM WAY GARLAND LANE



PROFILES  
Scale: H: 1"=100' V: 1"=10'



*Kenneth M. Lord*

Village of Owen Brown  
Parcels A, B and C  
Section 4, Area 1  
Contract No. 2711 D-W8

WHITMAN, REQUARDT & ASSOCIATES ENGINEERS 1304 ST. PAUL ST. BALTIMORE, MARYLAND	DEPARTMENT OF PUBLIC WORKS HOWARD COUNTY, MARYLAND 3-2-77 W.O. Libert 2-17-77 DIRECTOR OF PUBLIC WORKS - DATE CHIEF BUREAU OF ENGINEERING - DATE	CONTRACT NO. 2711 D-W8S	PLAN, PROFILES AND DETAIL OF WATER AND SEWER MAINS	COLUMBIA VILLAGE OF OWEN BROWN ELECTION DISTRICT GUILFORD NO. 6	DRAWING NO. 2 OF 3 SCALE AS SHOWN 17-A, 17-P 16-A, 16-P FB-2781 FB-5460
---	--	-------------------------	---	---	--

W. O. # 2470

As Built 8-12-77

February 7, 1977

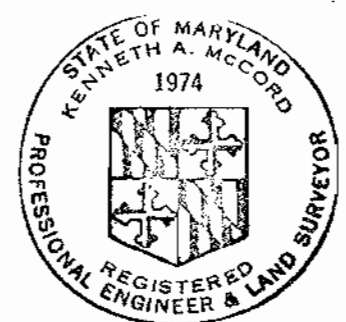
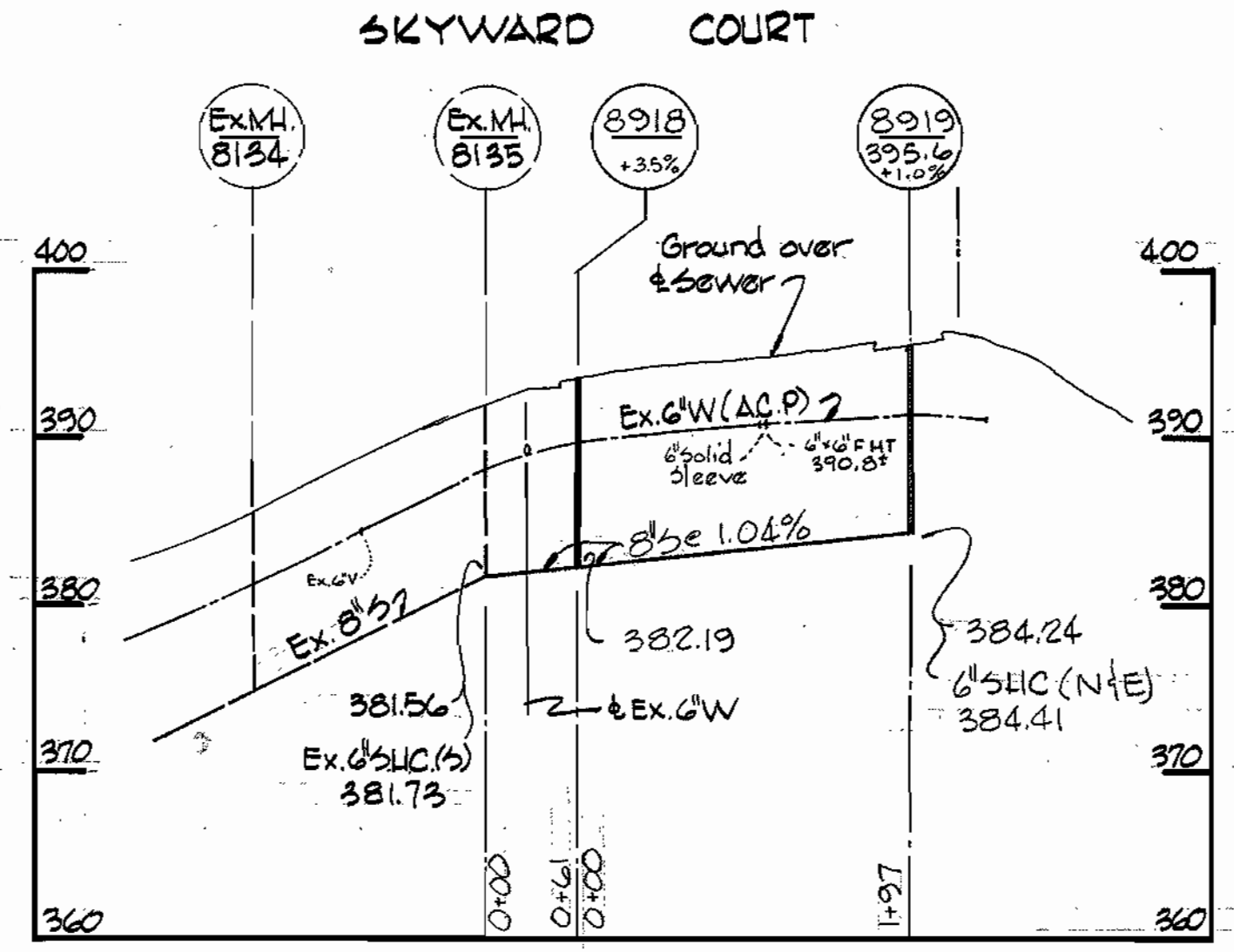
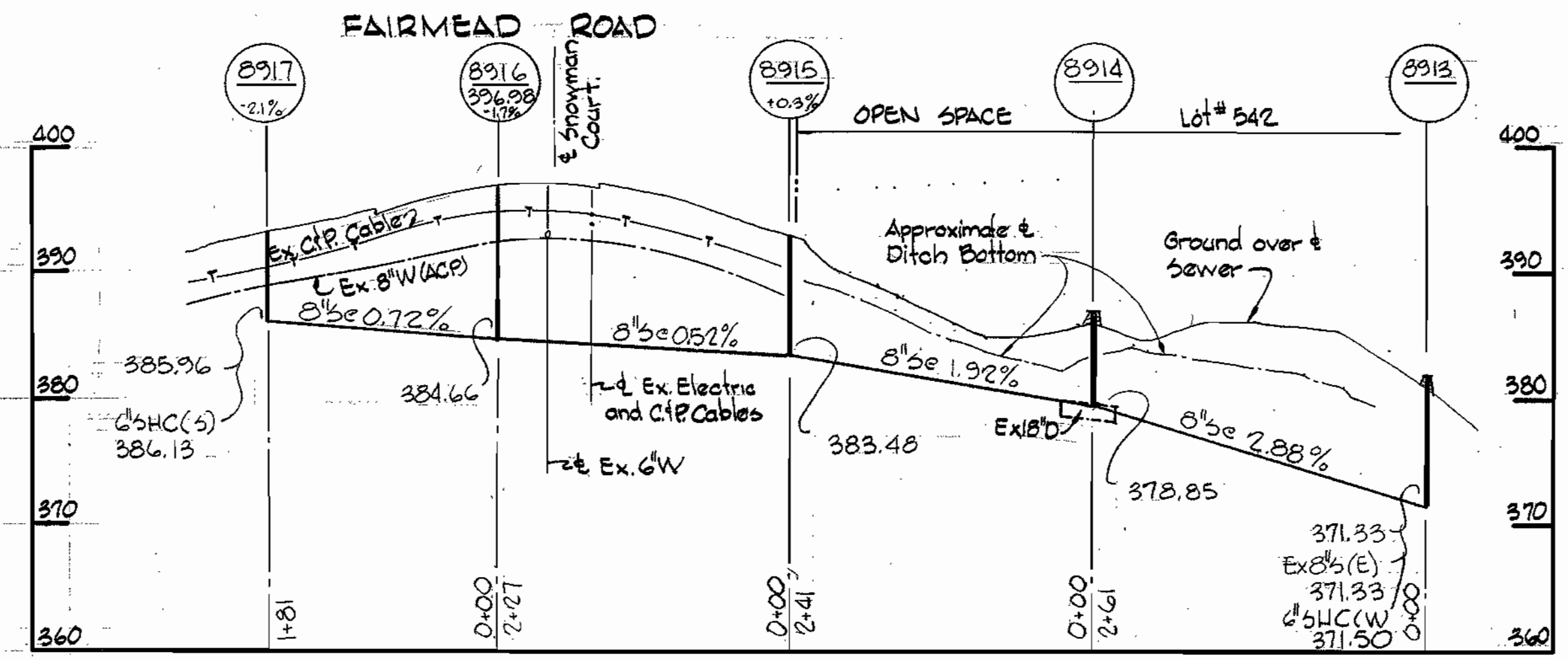
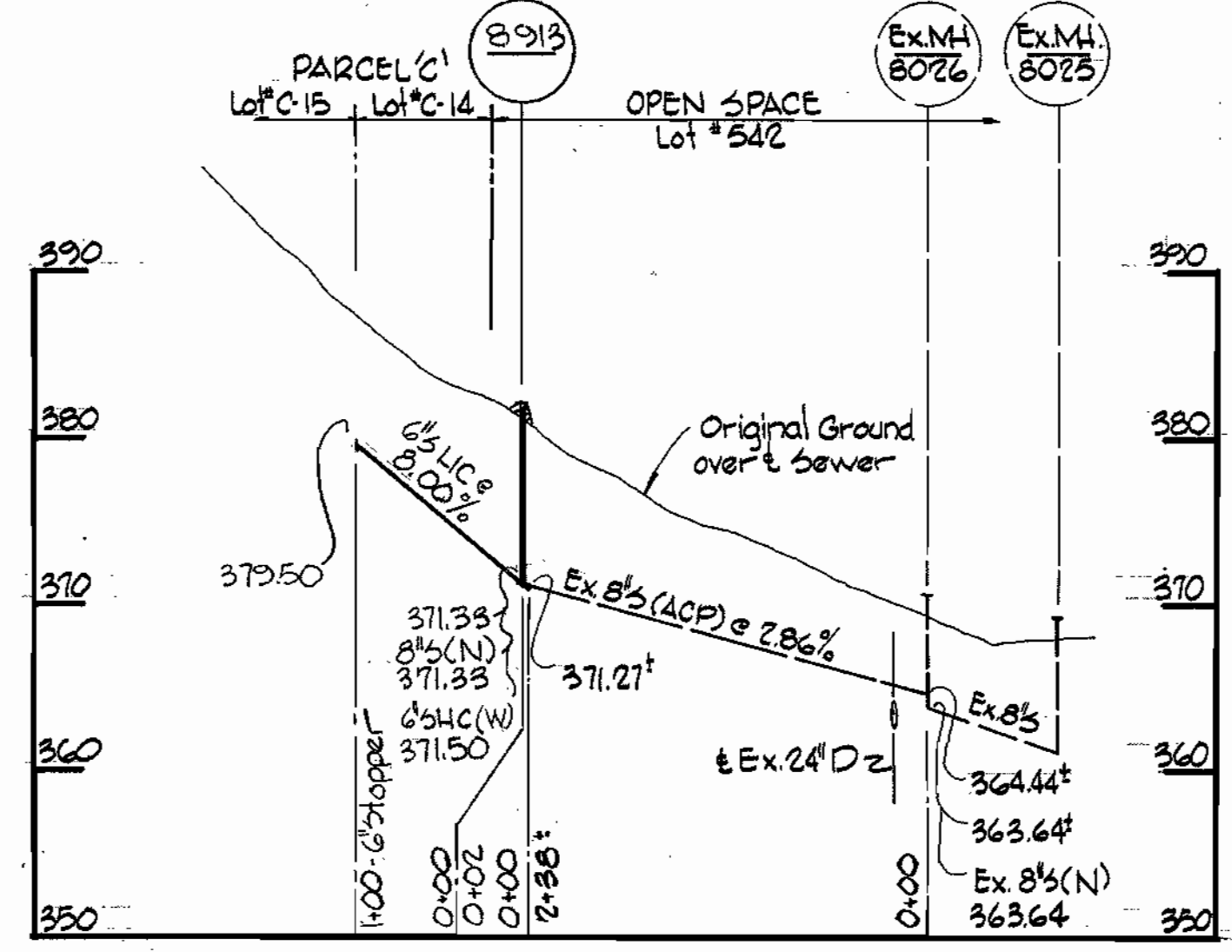
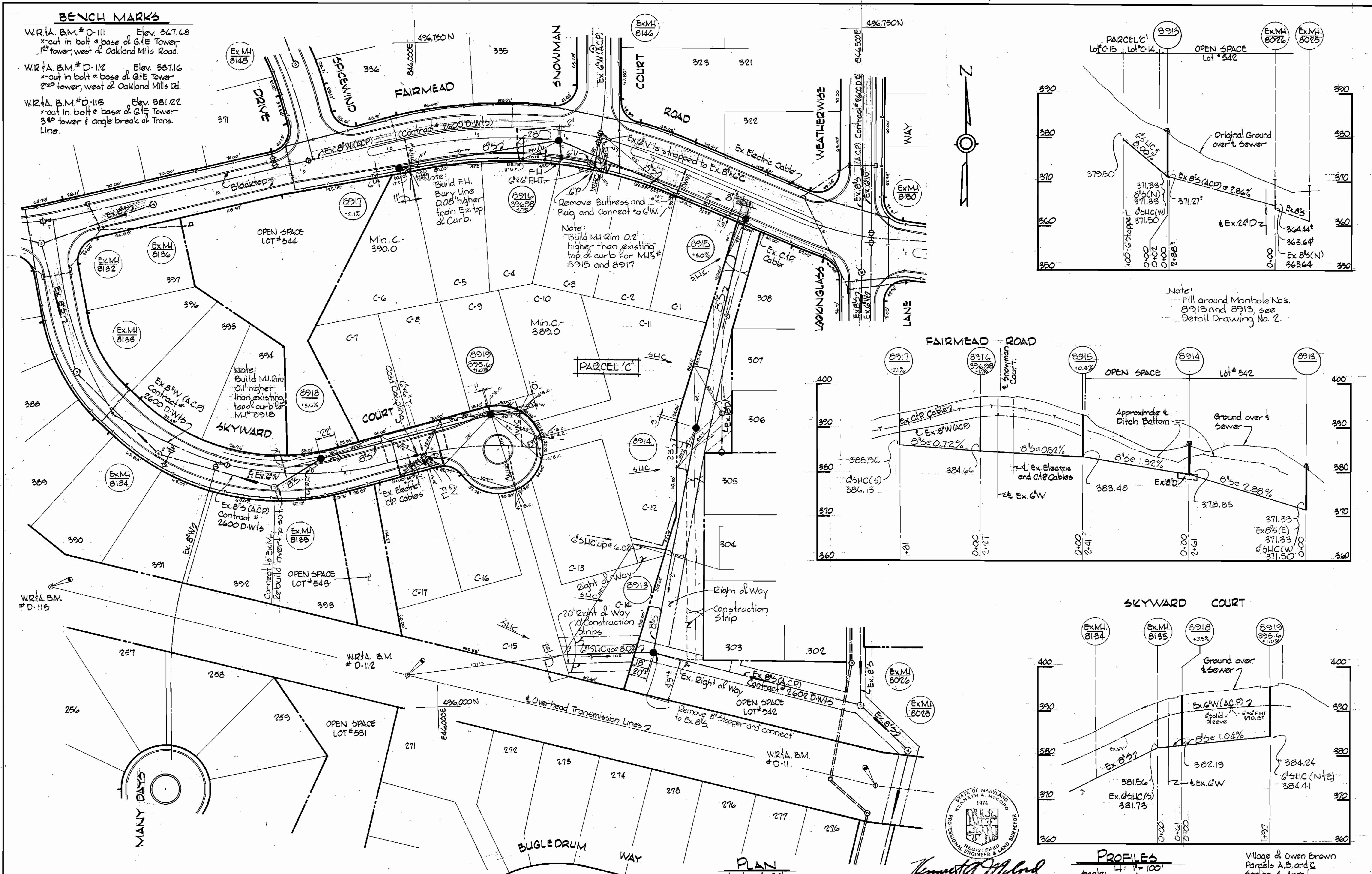


**BENCH MARKS**

W.R.T.A. B.M. # D-111 Elev. 367.68  
x-cut in bolt at base of G.I.E. Tower  
1<sup>st</sup> tower, west of Oakland Mills Road.

W.R.T.A. B.M. # D-112 Elev. 387.16  
x-cut in bolt at base of G.I.E. Tower  
2<sup>nd</sup> tower, west of Oakland Mills Rd.

W.R.T.A. B.M. # D-113 Elev. 381.22  
x-cut in bolt at base of G.I.E. Tower  
3<sup>rd</sup> tower & angle break of Trans.  
Line.



*Kenneth A. Melrod*  
REGISTERED PROFESSIONAL ENGINEER & LAND SURVEYOR

**PROFILES**  
Scale: H: 1" = 100'  
V: 1" = 10'

Village of Owen Brown  
Parcels A, B, and C  
Section 4, Area 1  
Contract No. 2711 D W/S

<p><b>WHITMAN, REQUARDT &amp; ASSOCIATES</b> ENGINEERS 1304 ST. PAUL ST. BALTIMORE, MARYLAND</p>	<p><b>DEPARTMENT OF PUBLIC WORKS</b> HOWARD COUNTY, MARYLAND 3-2-77 DIRECTOR OF PUBLIC WORKS - DATE</p>	<p><b>CONTRACT NO. 2711 D-W/S</b></p>	<p><b>PLAN AND PROFILES OF WATER AND SEWER MAINS</b></p>	<p><b>COLUMBIA VILLAGE OF OWEN BROWN ELECTION DISTRICT GUILFORD NO. 6</b></p>	<p><b>DRAWING NO. 3 OF 3</b></p> <p><b>SCALE AS SHOWN</b></p>
--	---	---------------------------------------	--	---	---