

VICINITY MAP  
Scale: 1"=2000'

**GENERAL NOTES**

1. Approximate location of existing mains are shown. The Contractor shall take all necessary precautions to protect existing mains and services and maintain uninterrupted supply. Any damage incurred shall be repaired immediately.
2. All pipe elevations shown are invert elevations.
3. The Contractor shall locate existing utilities a minimum of two weeks in advance of construction operations in vicinity of utilities.
4. Clear all utilities by a minimum of 6".
5. For all standard details see standards bound in Specifications.
6. All horizontal and vertical controls are based on Maryland State Datum.
7. Trees are to be protected from damage to maximum extent. Trees located within the construction strips are not to be removed or damaged by the Contractor.
8. Original Ground over & Water and/or sewer was taken from contour maps made by aerial photography.
9. The Contractor shall notify the following utilities or agencies at least five (5) days before starting work shown on these plans:
  - a) Baltimore Gas and Electric Company - Underground Electric Distribution Engineering "Damage Control" - 234-5691
  - b) Chesapeake and Potomac Telephone Company - 727-9976
10. All water mains shall be CIP, DLP or ACP unless otherwise noted.
11. All water mains to have a minimum of 3 1/2' cover.
12. Block all fittings with concrete, see standards bound in specifications.
13. All valves shall be strapped to trees where applicable in accordance with the standard Details.
14. Payment for strapping fire hydrants and valves will be included in unit price bid for furnishing and laying water mains.
15. All fire hydrants shall be strapped and buttressed in accordance with standard details. Soil around the fire hydrants shall be compacted in accordance with section 515 of the standard specifications.
16. Bury Line Elevations on fire hydrants shall be set to elevations shown on drawings.
17. All W.H.C.'s shall be 1/4" diameter unless otherwise noted.
18. Water services shall be inside meter settings.
19. All sewer mains shall be C.S.P.X., V.C.P.X., or A.C.R. Class 2400 unless otherwise noted.
20. All manholes shall be 4'-0" inside diameter.
21. The Contractor shall provide a joint in all sewer mains within 2'-0" of exterior manhole walls.

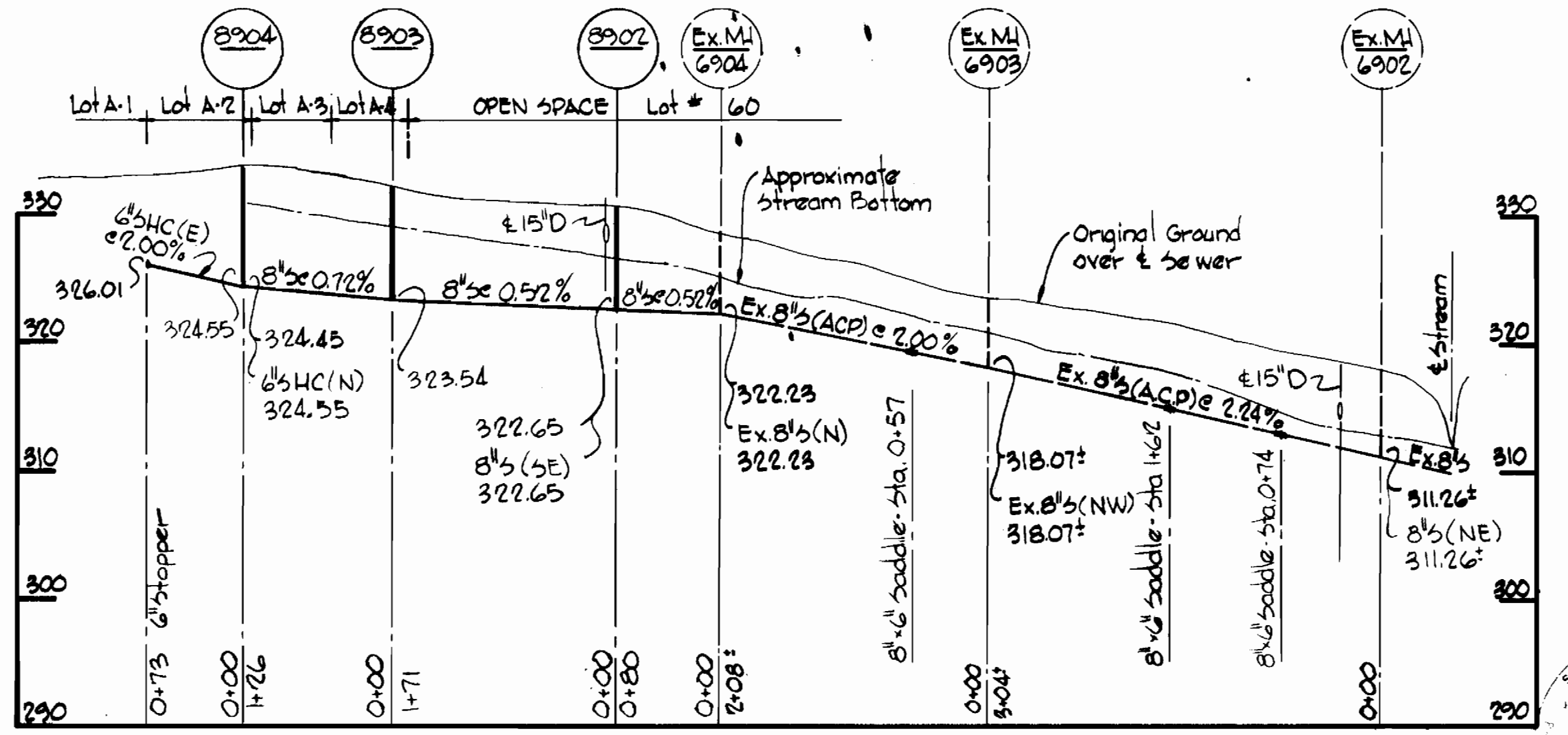
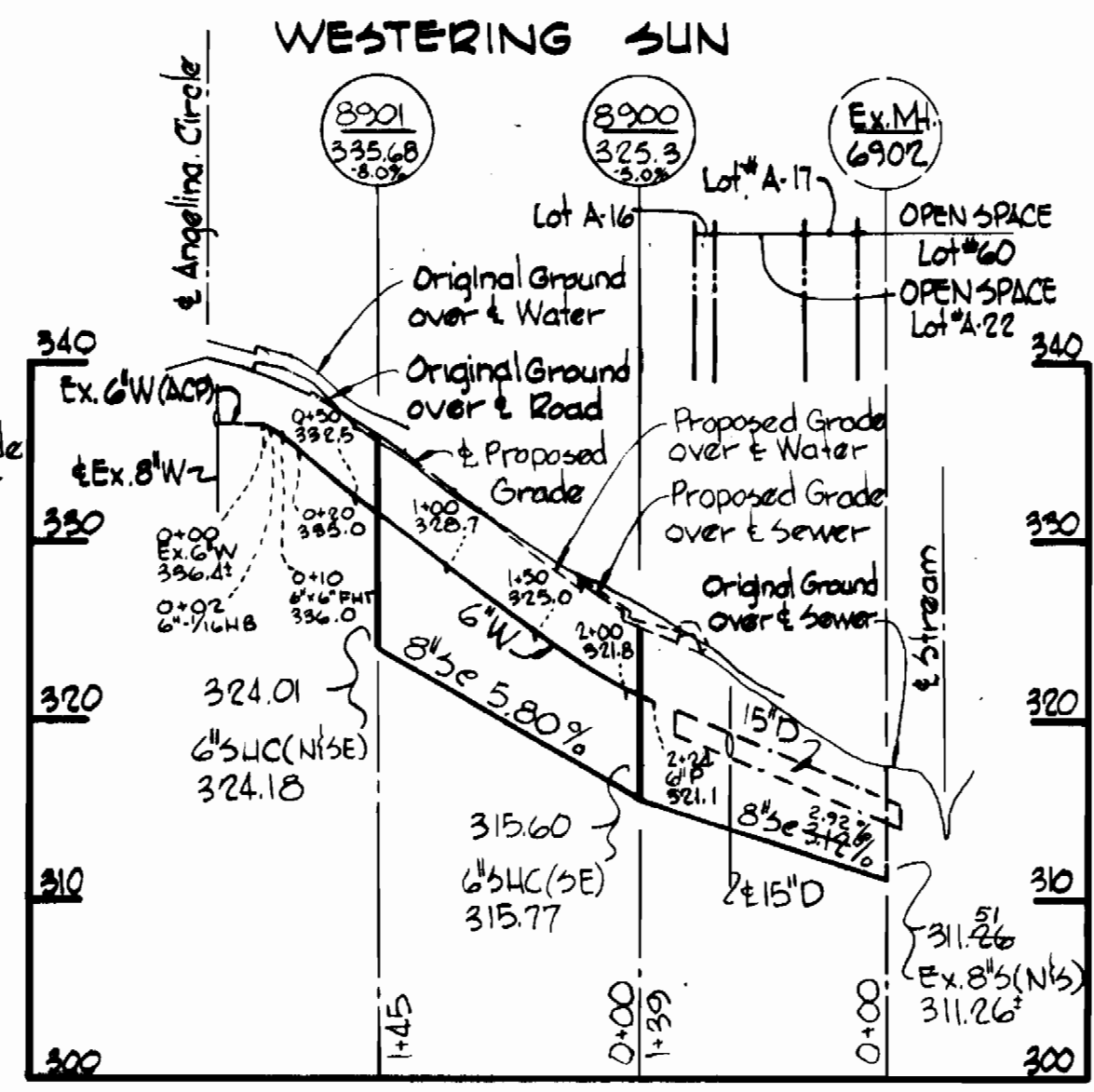
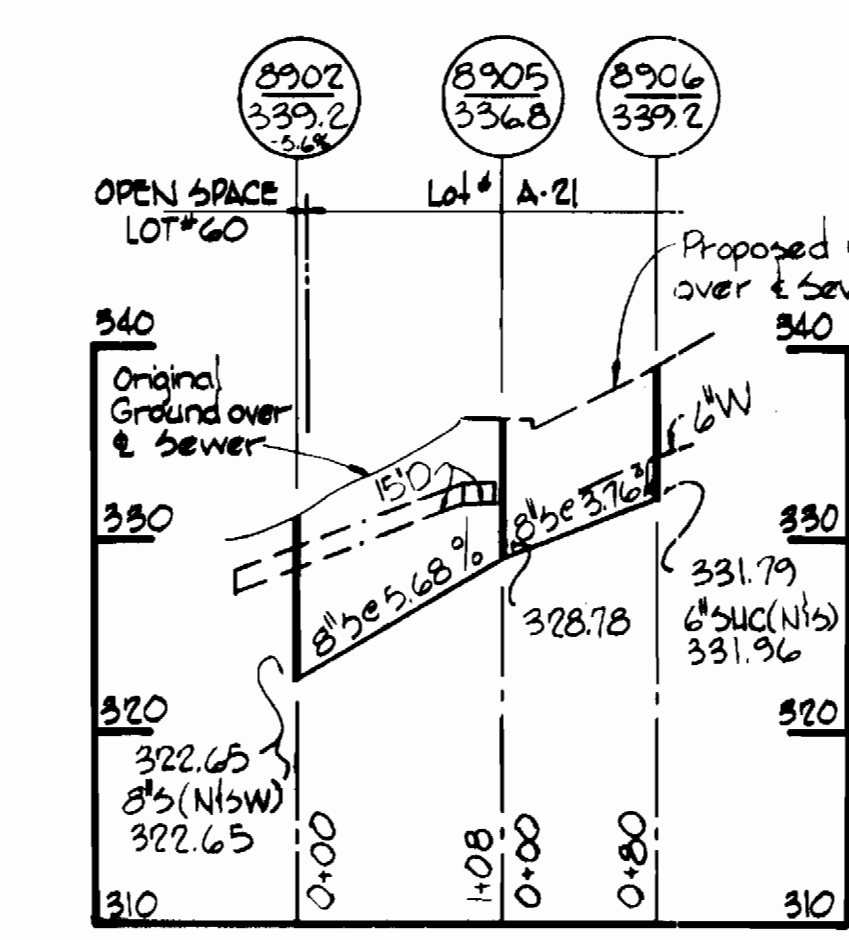
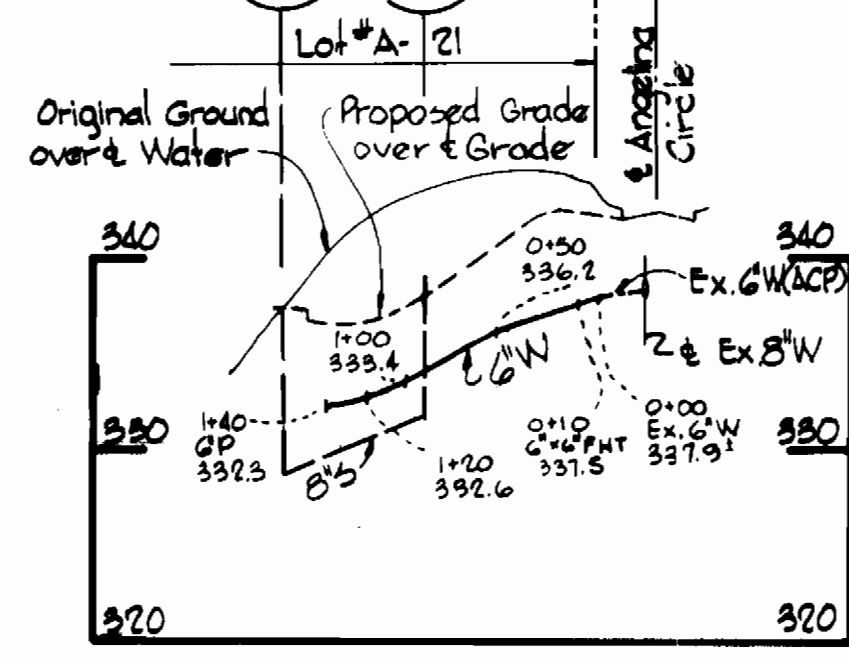
**QUANTITIES**

ITEM	QUANTITY
8" Sewer	2565.26 LF
6" Water	639.66 LF
Fire Hydrants	6

NOTE:  
Marker Boards - All Parcels  
SHC's 16' (2x8)  
WHC's 8' (2x8)

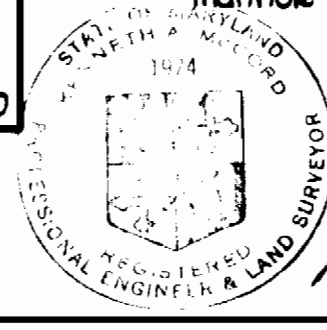
**BENCH MARKS**

W.R.A. B.M. #69-9259 Elev. 333.77  
& Cradlerock Way Sta. 69-9257  
W.R.A. B.M. Angelina Elev. 331.466  
cut S.E. corner, top inlet of  
S.W. corner int. of Angelina &  
Homespun Drive.



**PROFILES**

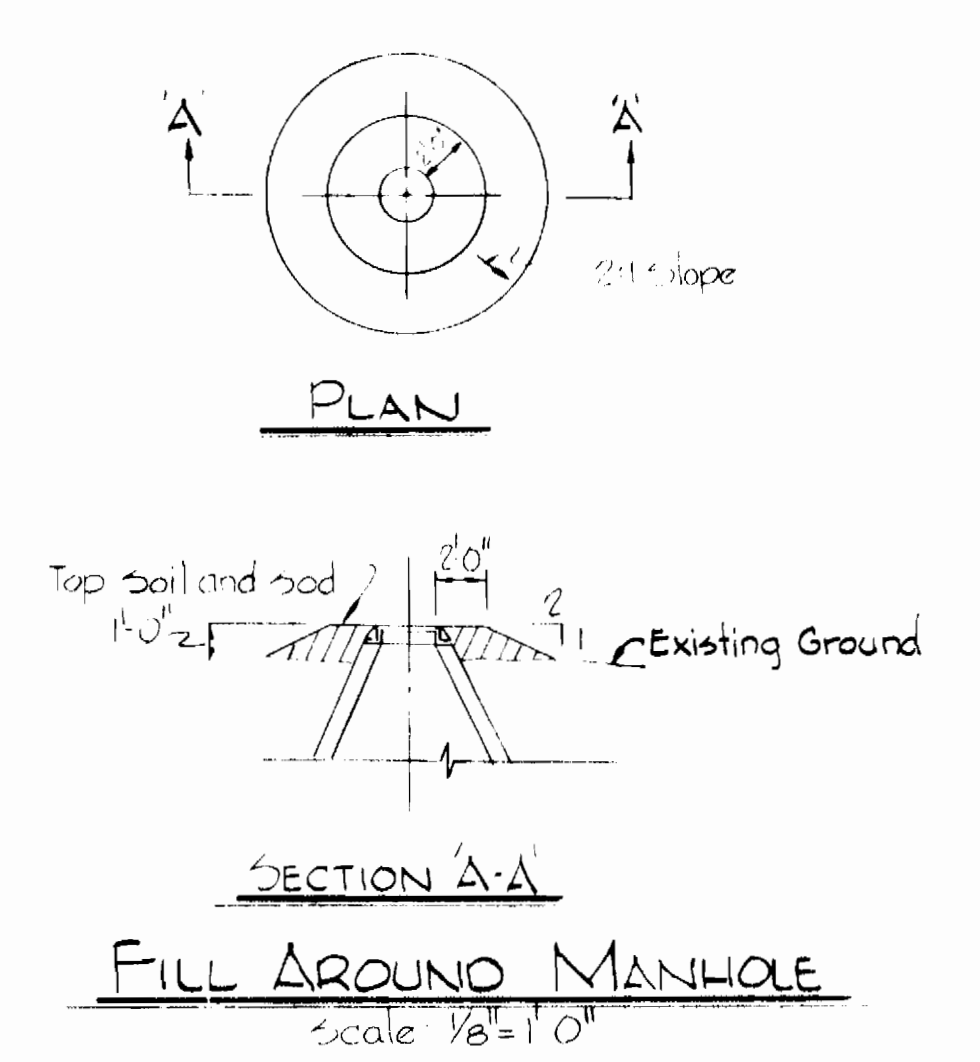
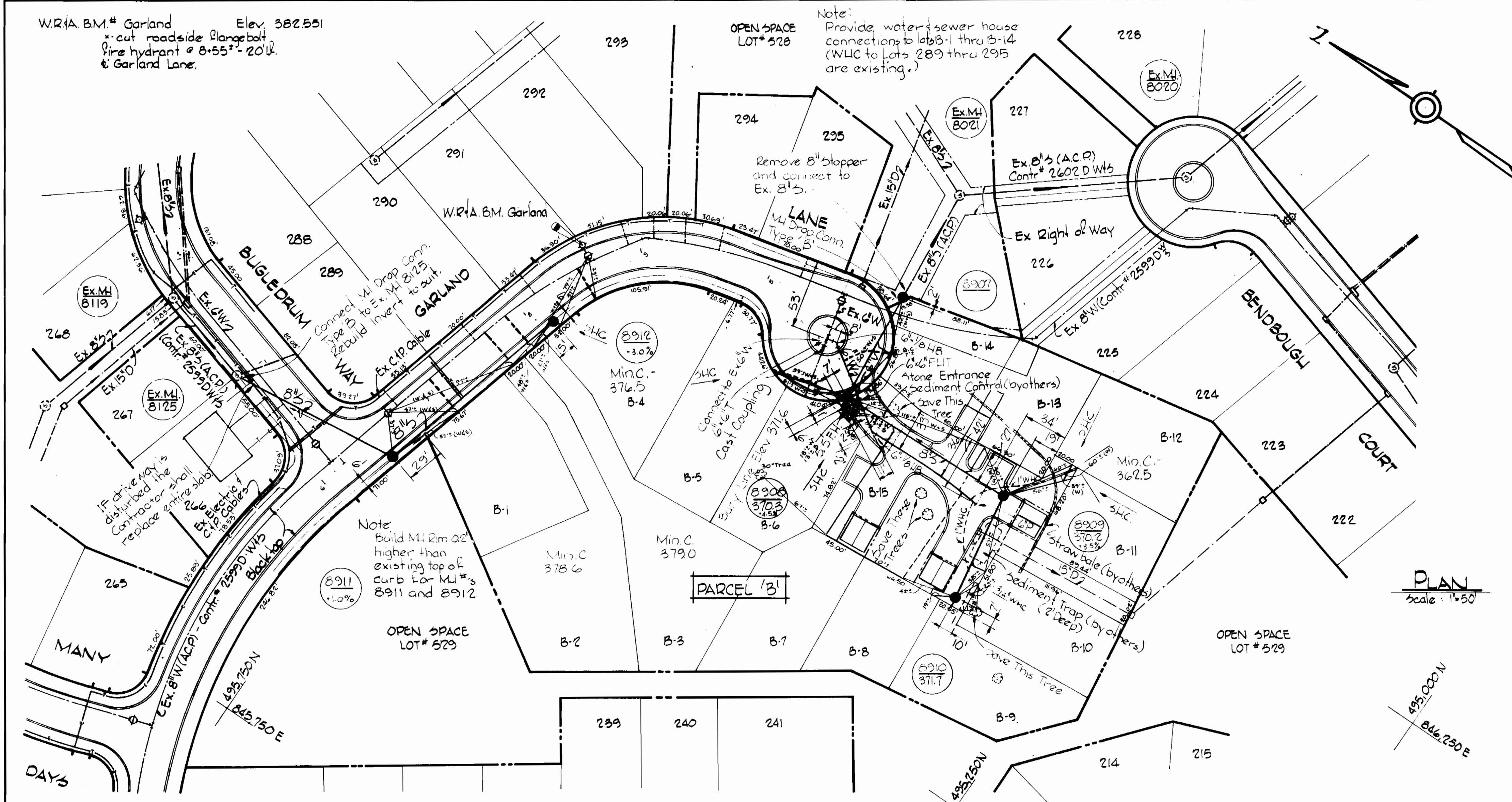
Scale: H: 1"=100'  
V: 1"=10'



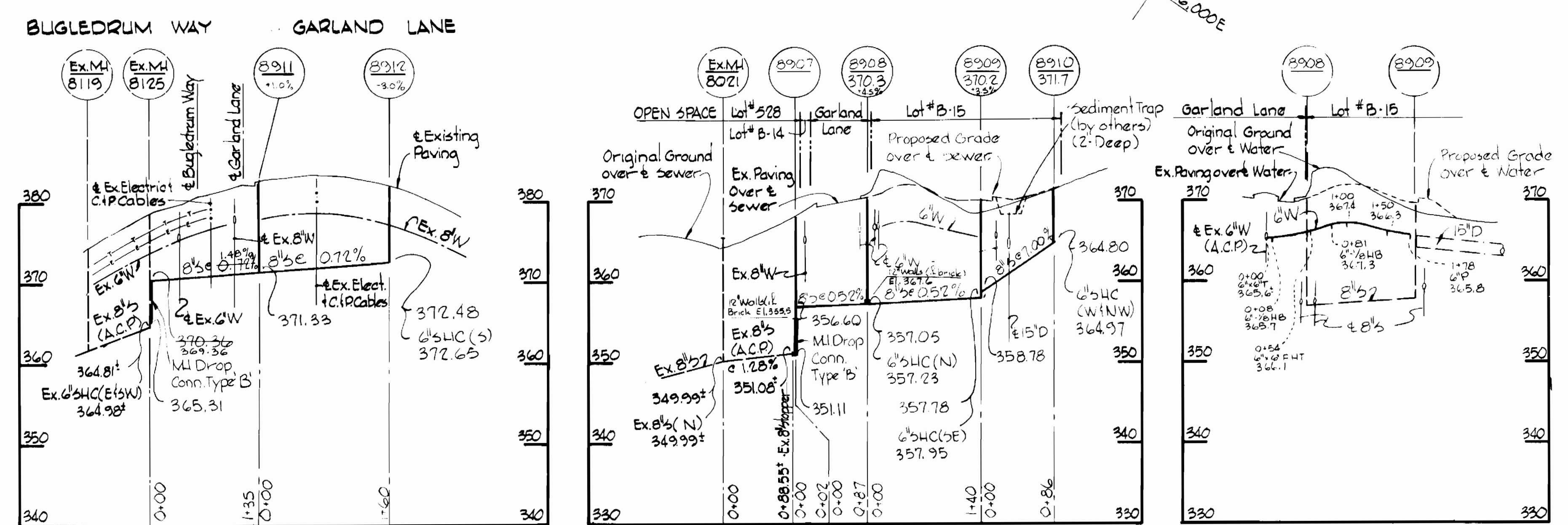
8" Sewer - ACP - Class 2400 II - Johns Manville  
6" Water - ACP - Class 150 - Johns Manville  
Village of Owen Brown  
Parcels A, B and C  
Section 4, Area 1  
Contract No. 2711-D-W15

<b>WHITMAN, REQUARDT &amp; ASSOCIATES</b> ENGINEERS 1304 ST. PAUL ST. BALTIMORE, MARYLAND	<b>DEPARTMENT OF PUBLIC WORKS</b> HOWARD COUNTY, MARYLAND 3-2-77 DIRECTOR OF PUBLIC WORKS - DATE	<b>CONTRACT NO. 2711-D-W15</b> W.O. # 2410 CHIEF BUREAU OF ENGINEERING - DATE	<b>PLAN AND PROFILES OF</b> <b>WATER AND SEWER MAINS</b>	<b>COLUMBIA</b> <b>VILLAGE OF OWEN BROWN</b> <b>ELECTION DISTRICT GUILFORD NO. 6</b>	<b>DRAWING</b> <b>NO. 1</b> <b>OF 3</b>	<b>SCALE</b> <b>AS</b> <b>SHOWN</b>	18" P. 18" A 17" P. 17" Q F.B.# 5460
--	---	---	---	--	---	---	--





PLAN  
Scale: 1" = 50'



PROFILES  
Scale - H: 1" = 100'  
V: 1" = 10'

*Kenneth J. ...*

Village of Owen Brown  
Parcels A, B and C  
Section 4, Area 1  
Contract No. 2711 D W/S

WHITMAN, REQUARDT & ASSOCIATES ENGINEERS 1304 ST. PAUL ST. BALTIMORE, MARYLAND	DEPARTMENT OF PUBLIC WORKS HOWARD COUNTY, MARYLAND 3-2-77 DIRECTOR OF PUBLIC WORKS - DATE	CONTRACT NO. 2711 D-W/S 2-17-77 CHIEF-BUREAU OF ENGINEERING - DATE	PLAN, PROFILES AND DETAIL OF WATER AND SEWER MAINS	COLUMBIA VILLAGE OF OWEN BROWN ELECTION DISTRICT GUILFORD NO. 6	DRAWING NO. 2 OF 3 SCALE AS SHOWN 11-A, 11-P 16-A, 16-P FB# 5761 FB# 5460
---	--	--	---	---	--

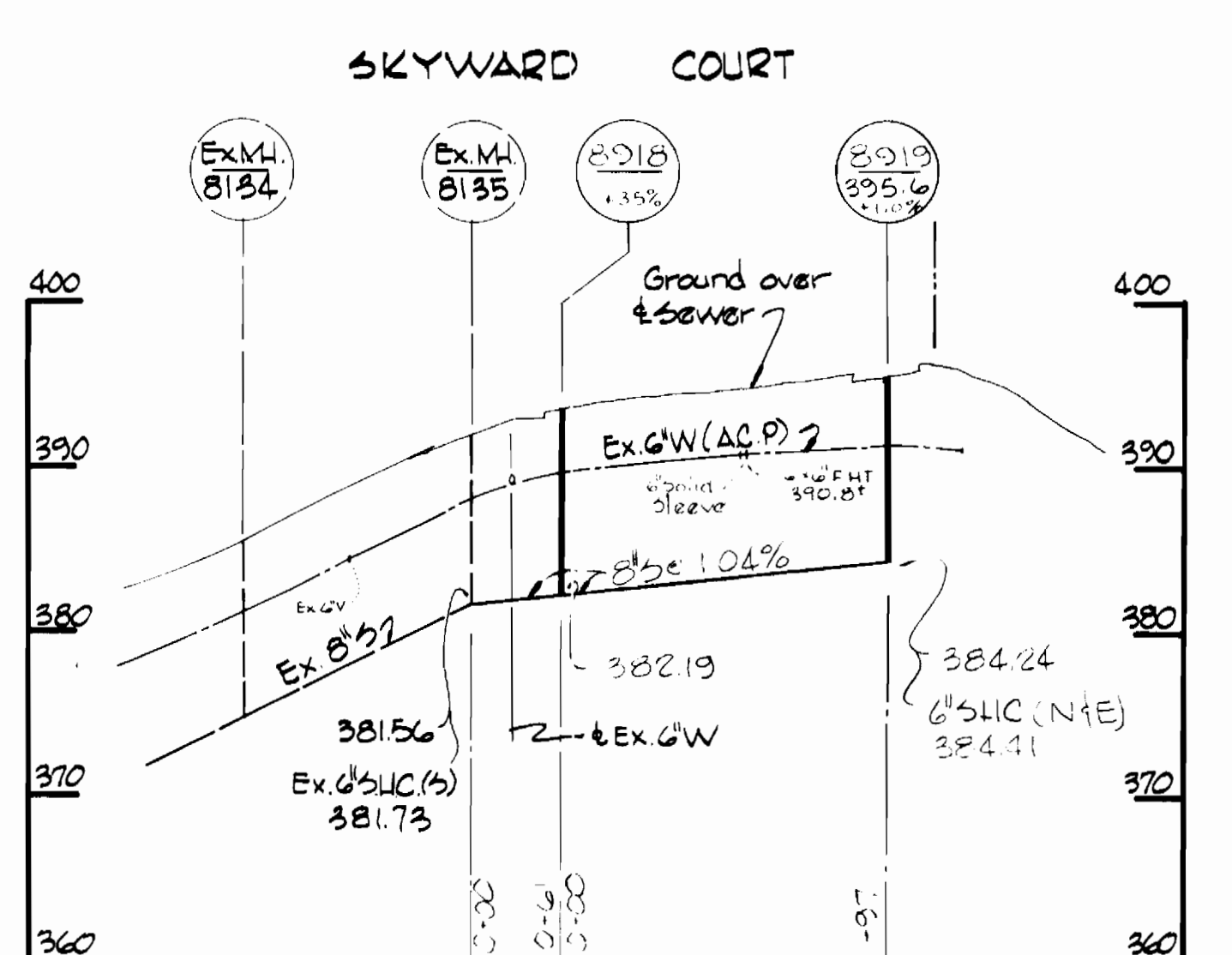
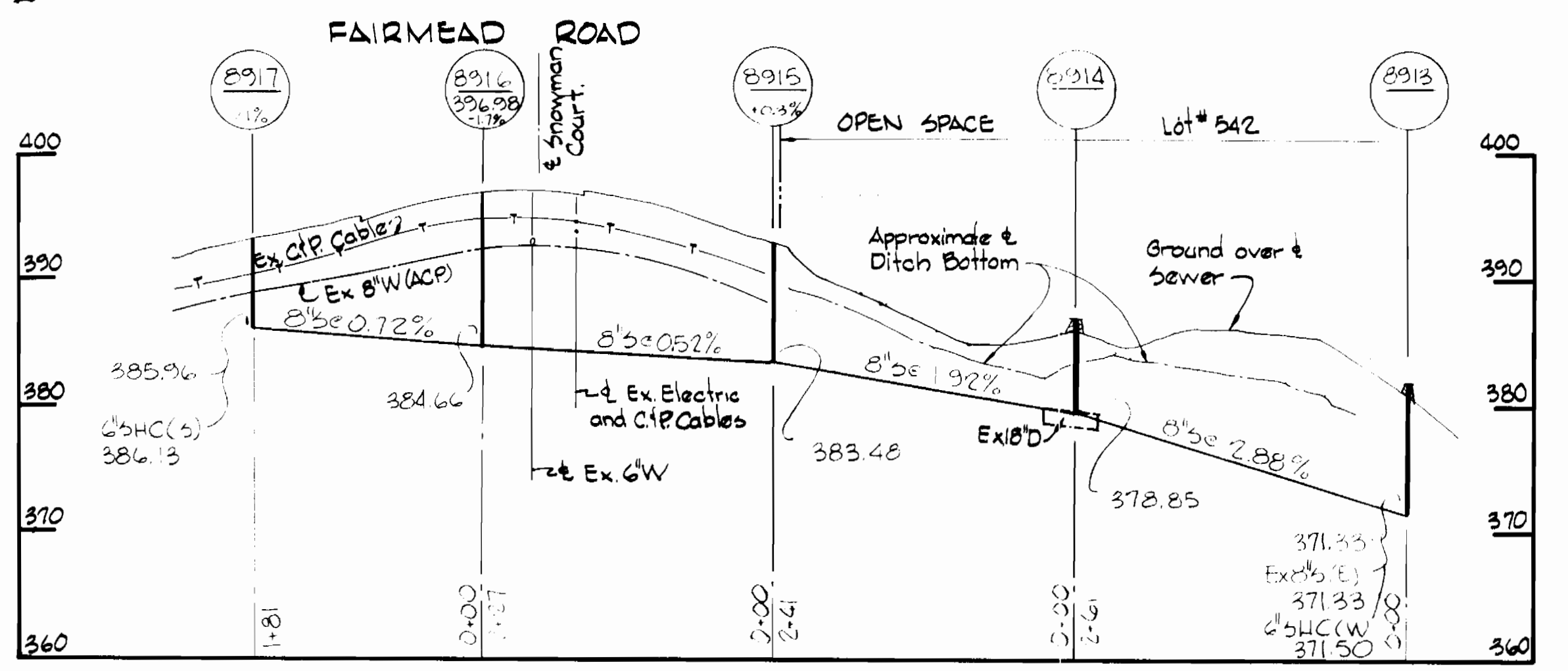
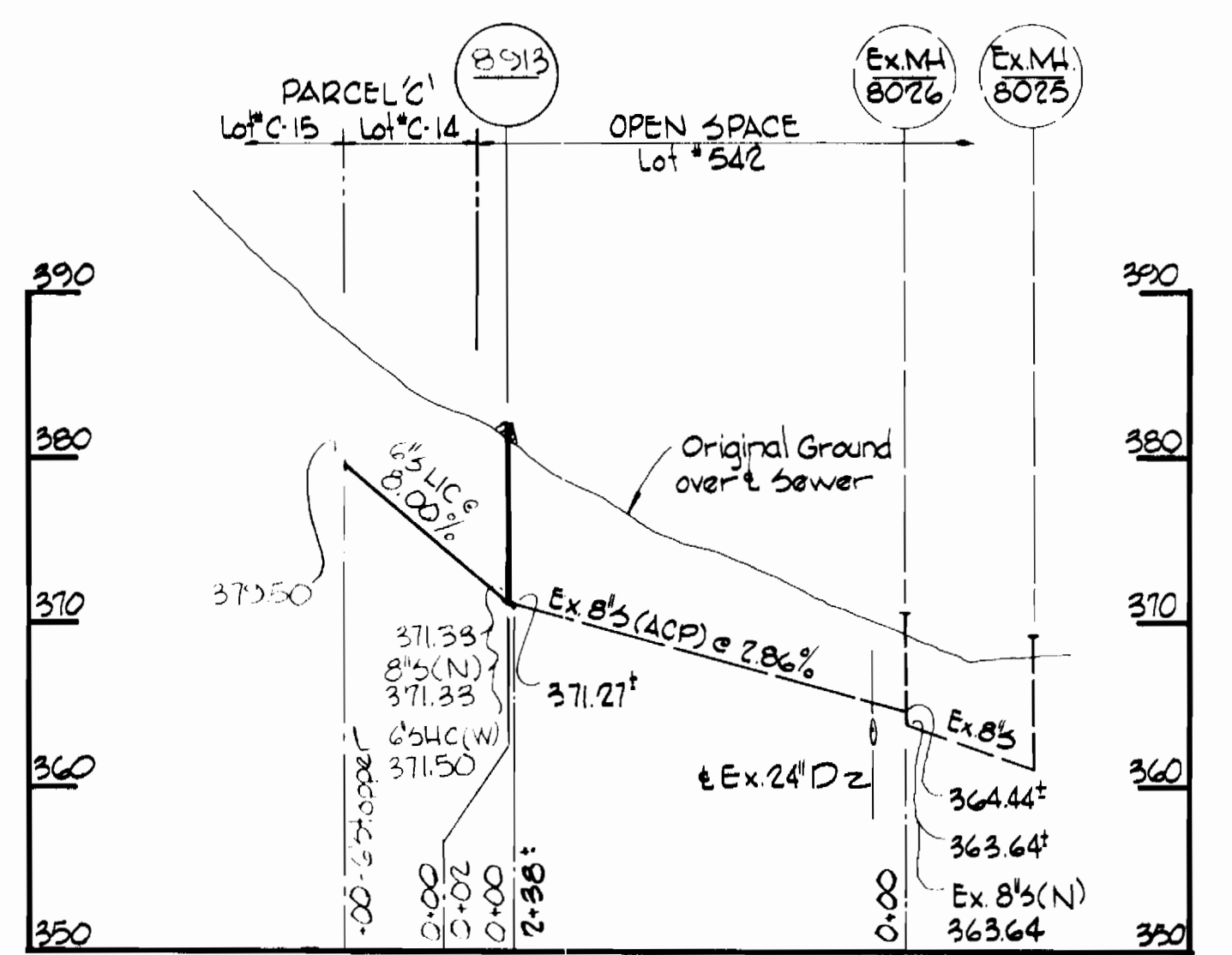
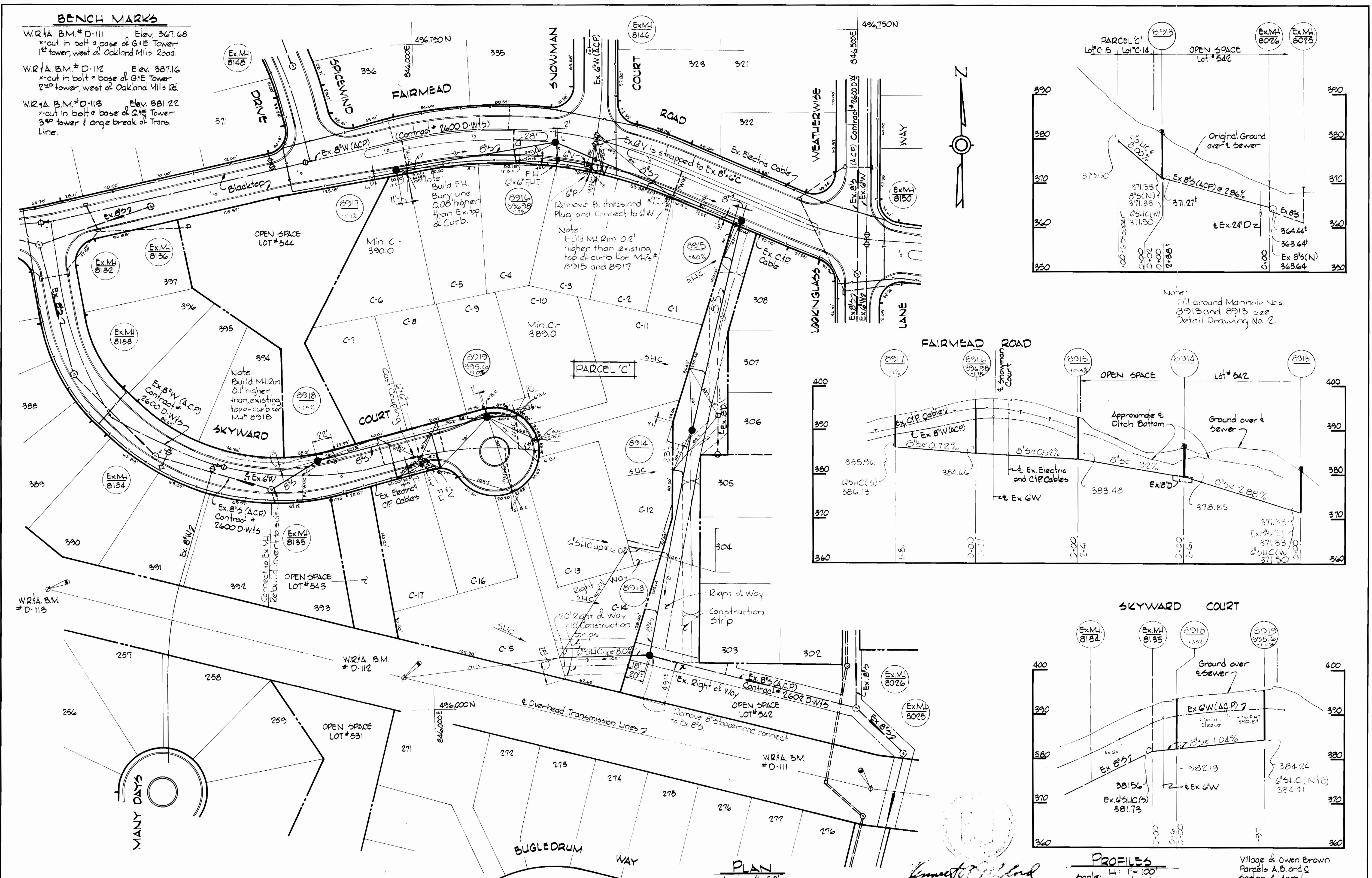


**BENCH MARKS**

W.R.T.A. B.M. #D-111 Elev. 367.68  
 x-cut in bolt base of G.I.E Tower  
 1st tower, west of Oakland Mills Road.

W.R.T.A. B.M. #D-112 Elev. 387.16  
 x-cut in bolt base of G.I.E Tower  
 2nd tower, west of Oakland Mills Rd.

W.R.T.A. B.M. #D-113 Elev. 381.22  
 x-cut in bolt base of G.I.E Tower  
 3rd tower, west of angle break of Trans.  
 Line.



PLAN  
 Scale: 1" = 50'

PROFILES  
 Scale: H: 1" = 100'  
 V: 1" = 10'

Village of Owen Brown  
 Parcels A, B, and C  
 Section 4, Area 1  
 Contract No. 2711 D-W15

WHITMAN, REQUARDT & ASSOCIATES ENGINEERS 1304 ST. PAUL ST. BALTIMORE, MARYLAND	DEPARTMENT OF PUBLIC WORKS HOWARD COUNTY, MARYLAND 3-2-77 W.O. Fallick 2-17-77	CONTRACT NO. 2711 D-W15	PLAN AND PROFILES OF WATER AND SEWER MAINS	COLUMBIA VILLAGE OF OWEN BROWN ELECTION DISTRICT GUILFORD NO. 6	DRAWING NO. 3 OF 3 SCALE AS SHOWN
---	---	-------------------------	---	---	--------------------------------------