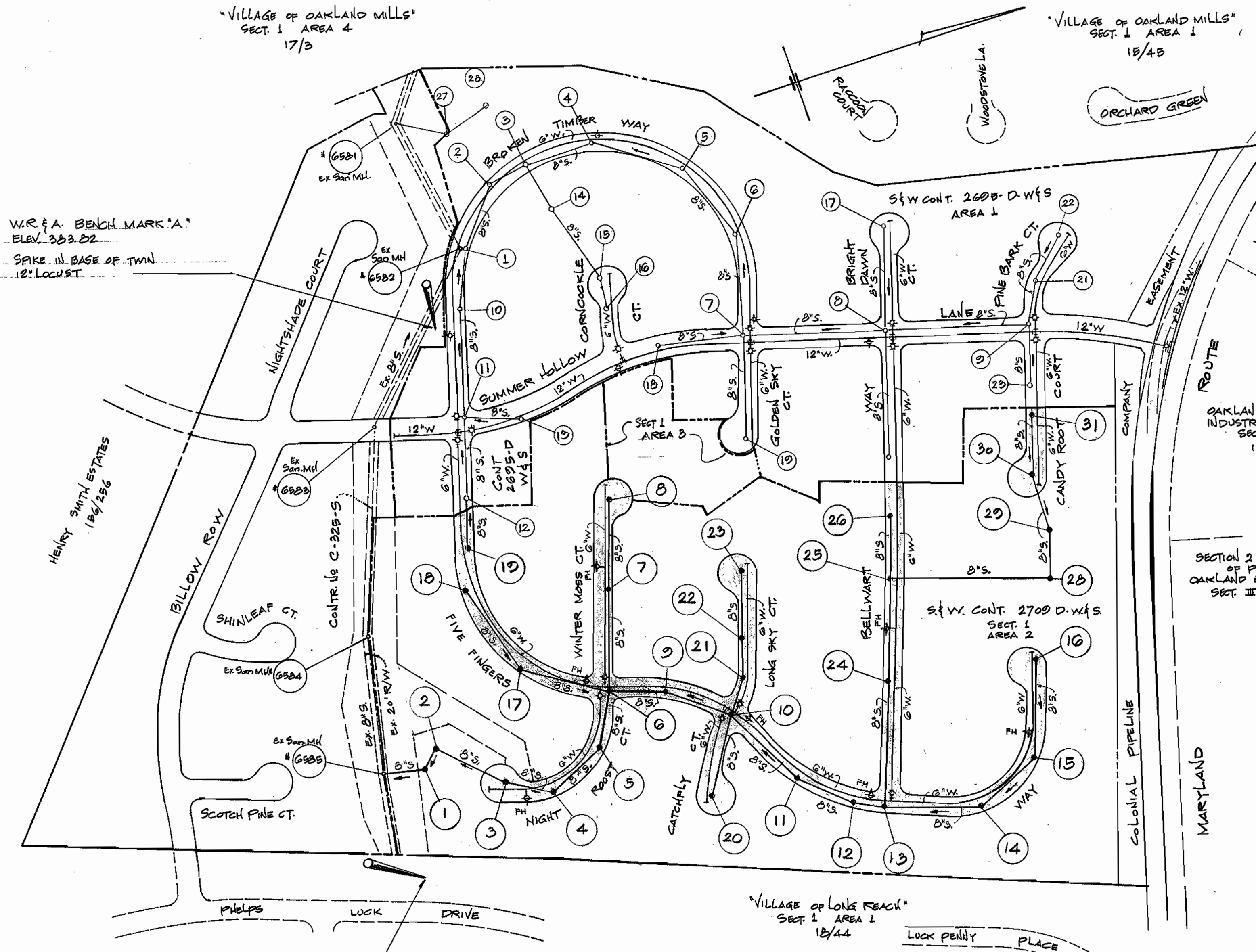


VICINITY MAP
SCALE: 1" = 2000'

GENERAL NOTES

- APPROXIMATE LOCATIONS OF EXISTING MAINS ARE SHOWN. THE CONTRACTOR SHALL TAKE ALL NECESSARY PRECAUTIONS TO PROTECT EXISTING MAINS AND SERVICES AND MAINTAIN UNINTERRUPTED SUPPLY. ANY DAMAGES INCURRED SHALL BE REPAIRED IMMEDIATELY.
- ALL HORIZONTAL CONTROLS ARE BASED ON MARYLAND STATE COORDINATES.
- ALL VERTICAL CONTROLS ARE BASED ON U.S.G.S. DATUM.
- ALL PIPE ELEVATIONS AS SHOWN ARE INVERT ELEVATIONS.
- CLEAR ALL UTILITIES BY A MINIMUM OF 6'. CLEAR ALL POLES 2'-0" MINIMUM OR TUNNEL AS REQUIRED.
- FOR ALL STANDARD DETAILS SEE STANDARDS BOUND IN SPECIFICATIONS.
- CONTRACTOR SHALL LOCATE EXISTING UTILITIES IN ADVANCE OF CONSTRUCTION OPERATIONS IN THE VICINITY OF PROPOSED UTILITIES.
- CONTRACTOR SHALL NOTIFY THE FOLLOWING UTILITIES OR AGENCIES AT LEAST FIVE (5) DAYS BEFORE STARTING WORK SHOWN ON THESE PLANS:
 STATE HIGHWAY ADMINISTRATION - 591-5533
 BALTIMORE GAS AND ELECTRIC CO. - UNDERGROUND ELECTRIC DISTRIBUTION ENGINEERING - "DAMAGE CONTROL" - 234-5891
 BALTIMORE GAS AND ELECTRIC COMPANY - UNDERGROUND GAS DISTRIBUTION ENGINEERING - 559-0100
 CHESAPEAKE AND POTOMAC TELEPHONE CO. - 725-9976
 AMERICAN TELEPHONE AND TELEGRAPH - CABLE LOCATION DIVISION - 301-393-3553
 COLONIAL PIPELINE COMPANY - 781-4641
- TREES ARE TO BE PROTECTED FROM DAMAGE TO MAXIMUM EXTENT. TREES LOCATED WITHIN THE CONSTRUCTION STRIP ARE NOT TO BE REMOVED OR DAMAGED BY THE CONTRACTOR.
- CONTRACTOR SHALL REMOVE TREES, STUMPS AND ROOTS ALONG LINE OF EXCAVATION AS DIRECTED BY THE ENGINEER. PAYMENT FOR SUCH REMOVAL SHALL BE INCLUDED IN THE UNIT PRICE BID FOR EXCAVATION AND BACKFILL FOR WATER AND SEWER MAINS.
- PLACE REGULATION "MEN WORKING" AND WARNING SIGNS AS REQUIRED TO COMPLY WITH MARYLAND STATE HIGHWAY ADMINISTRATION MANUAL OF TRAFFIC CONTROL FOR HIGHWAY CONSTRUCTION AND MAINTENANCE OPERATIONS.
- ALL WATER MAINS TO BE C.I.P., D.I.P. OR A.C.P. UNLESS OTHERWISE NOTED.
- TOP OF ALL WATER MAINS TO HAVE A MINIMUM OF 3 1/2' COVER UNLESS OTHERWISE NOTED.
- ALL VALVES SHALL BE STRAPPED TO TREES IN ACCORDANCE WITH STANDARD DETAILS.
- BLOCK ALL FITTINGS WITH CONCRETE. SEE STANDARDS BOUND IN SPECIFICATIONS.
- BURY LINE ELEVATIONS ON FIRE HYDRANTS SHALL BE SET TO THE ELEVATIONS SHOWN ON THE DRAWINGS. ALL FIRE HYDRANTS SHALL BE STRAPPED AND BUTTRESSED WITH CONCRETE IN ACCORDANCE WITH STANDARD DETAILS. SOIL AROUND THE FIRE HYDRANTS TO BE COMPACTED IN ACCORDANCE WITH SECT. 5-15 OF THE STANDARD SPECIFICATIONS.
- ALL WATER HOUSE CONNECTIONS SHALL BE INSIDE METER SETTINGS.
- ALL WATER HOUSE CONNECTIONS TO BE 3/4" DIAMETER UNLESS OTHERWISE NOTED.
- ALL SEWER MAINS SHALL BE C.S.P.X., V.C.P.X., OR A.C.P. CLASS 2400 UNLESS OTHERWISE NOTED.
- THE CONTRACTOR SHALL PROVIDE A JOINT IN ALL SEWER MAINS WITHIN 3'-0" OF EXTERIOR MANHOLE WALL.
- ALL MANHOLES SHALL BE 4'-0" INSIDE DIAMETER UNLESS OTHERWISE NOTED.

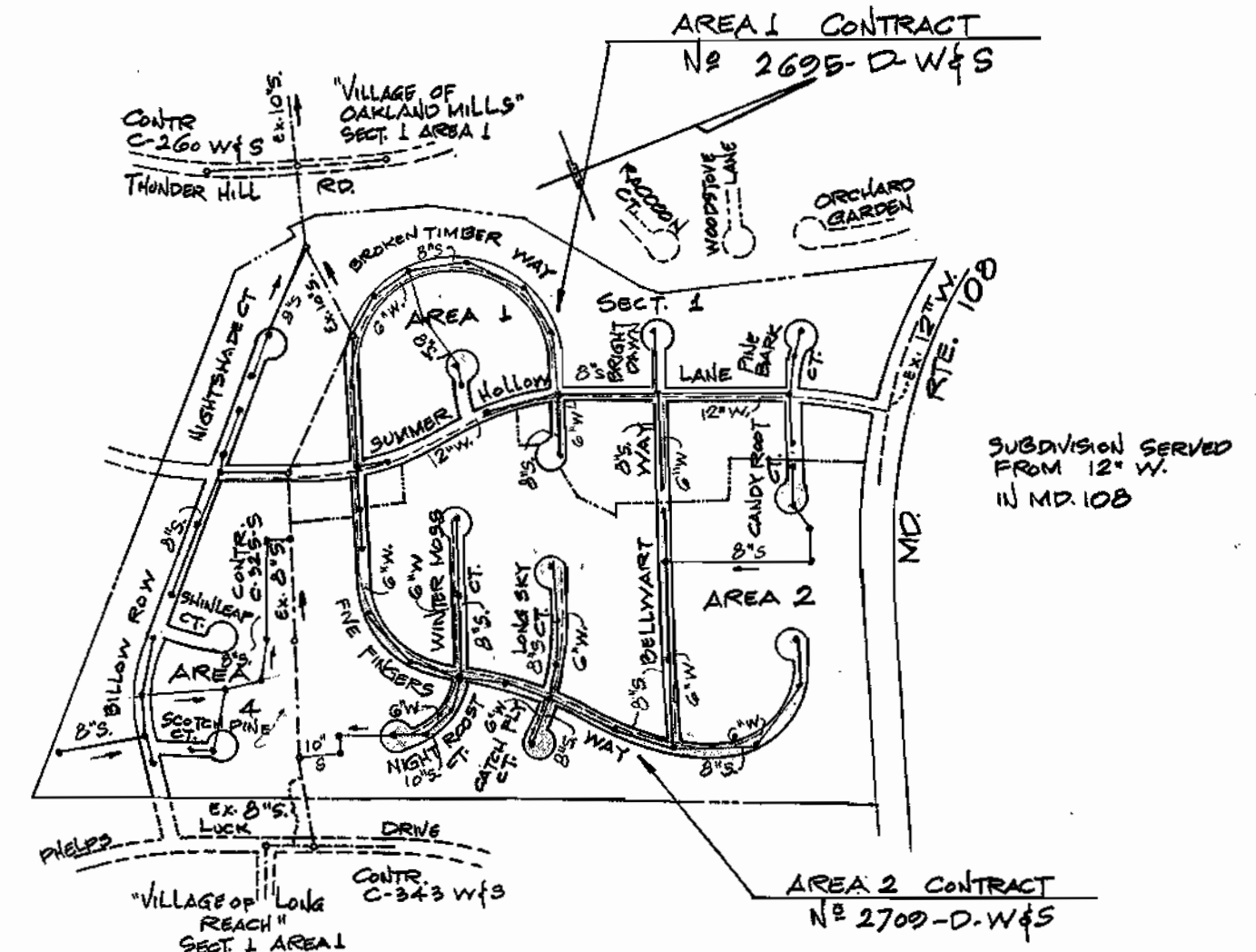


LOCATION PLAN

SCALE: 1" = 200'

BILL OF MATERIALS	
ITEM	QUANTITY
SEWER	5354 5324 L.F.
WATER	4905 4820 L.F.
FIRE HYDRANTS	2 EA.

MH have "A" Lock (no grout)
 "Sewer" - Certain Teed class - 2400
 "Water" - Griffin DIP



LOCATION PLAN
SCALE: 1" = 600'

2700-D-W4S
 GLENMONT
 Section 1
 Area 2



MCA ENGINEERING CORPORATION
 ENGINEERS
 1020 CROMWELL BRIDGE ROAD
 TOWSON, MD. 21204

DEPARTMENT OF PUBLIC WORKS
 HOWARD COUNTY, MARYLAND
 P.J. Regan 6-10-77 1001 Albert 6-10-77
 DIRECTOR DATE CHIEF BUREAU OF ENGINEERING DATE

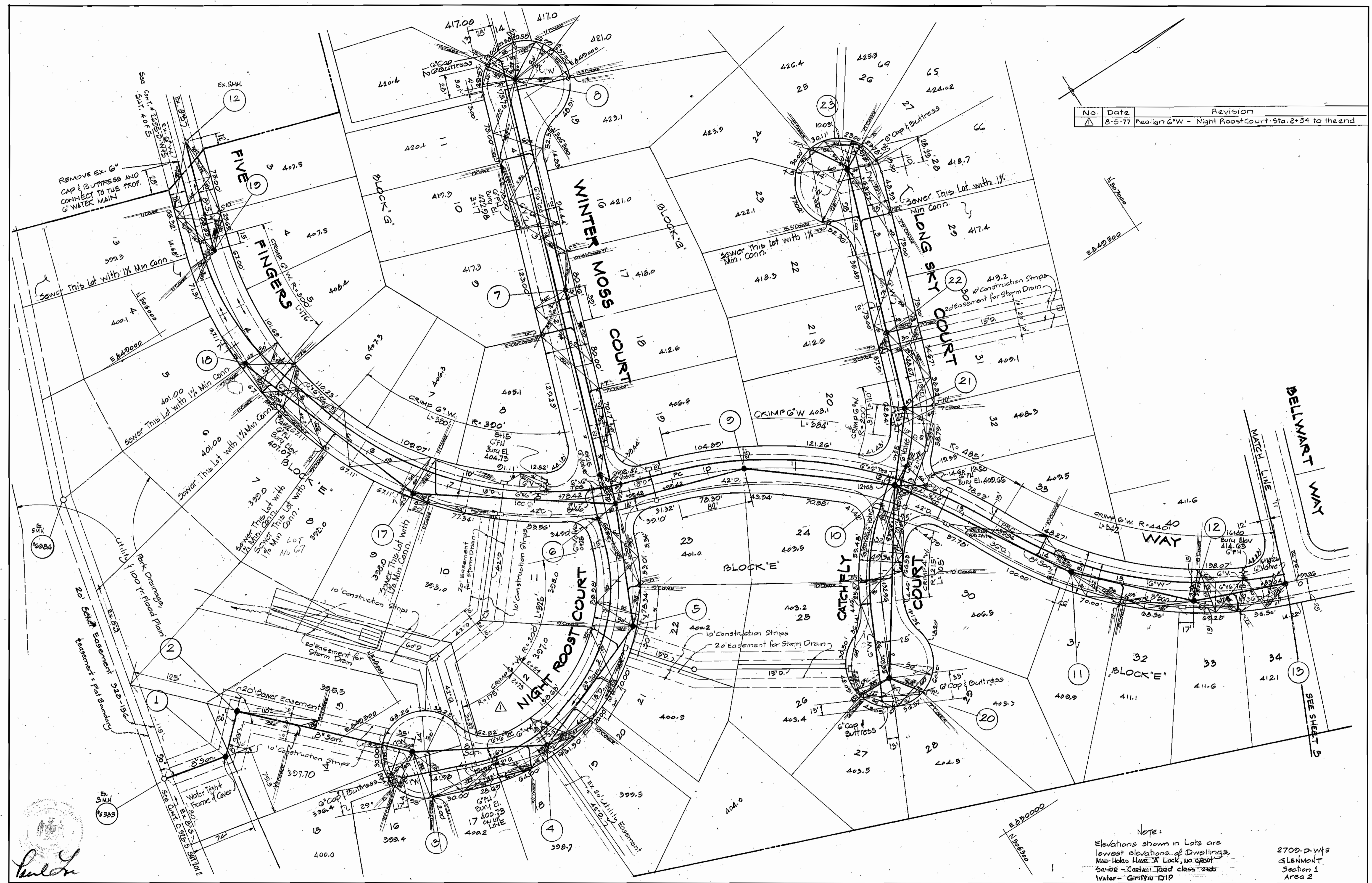
CONTRACT NO. 700-D-W4S

LOCATION MAP OF
 WATER & SEWER MAINS

GLENMONT
 SECTION 1 AREA 2
 ELECTION DISTRICT GUILFORD No. 6

DRAWING NO. 1 OF 5
 SCALE 1" = 200'

No.	Date	Revision
1	8-5-77	Realign G*W - Night Roost Court - Sta. 2+54 to the end



NOTE:
 Elevations shown in Lots are lowest elevations of Dwellings. Man-holes Have "A" Lock, no cover. Sewer - Cast Iron, load class 2400. Water - Griffin DIP.



MCA ENGINEERING CORPORATION
 ENGINEERS
 1020 CROMWELL BRIDGE ROAD
 TOWSON, MD. 21284

DEPARTMENT OF PUBLIC WORKS
 HOWARD COUNTY, MARYLAND
 6-10-77
 DATE

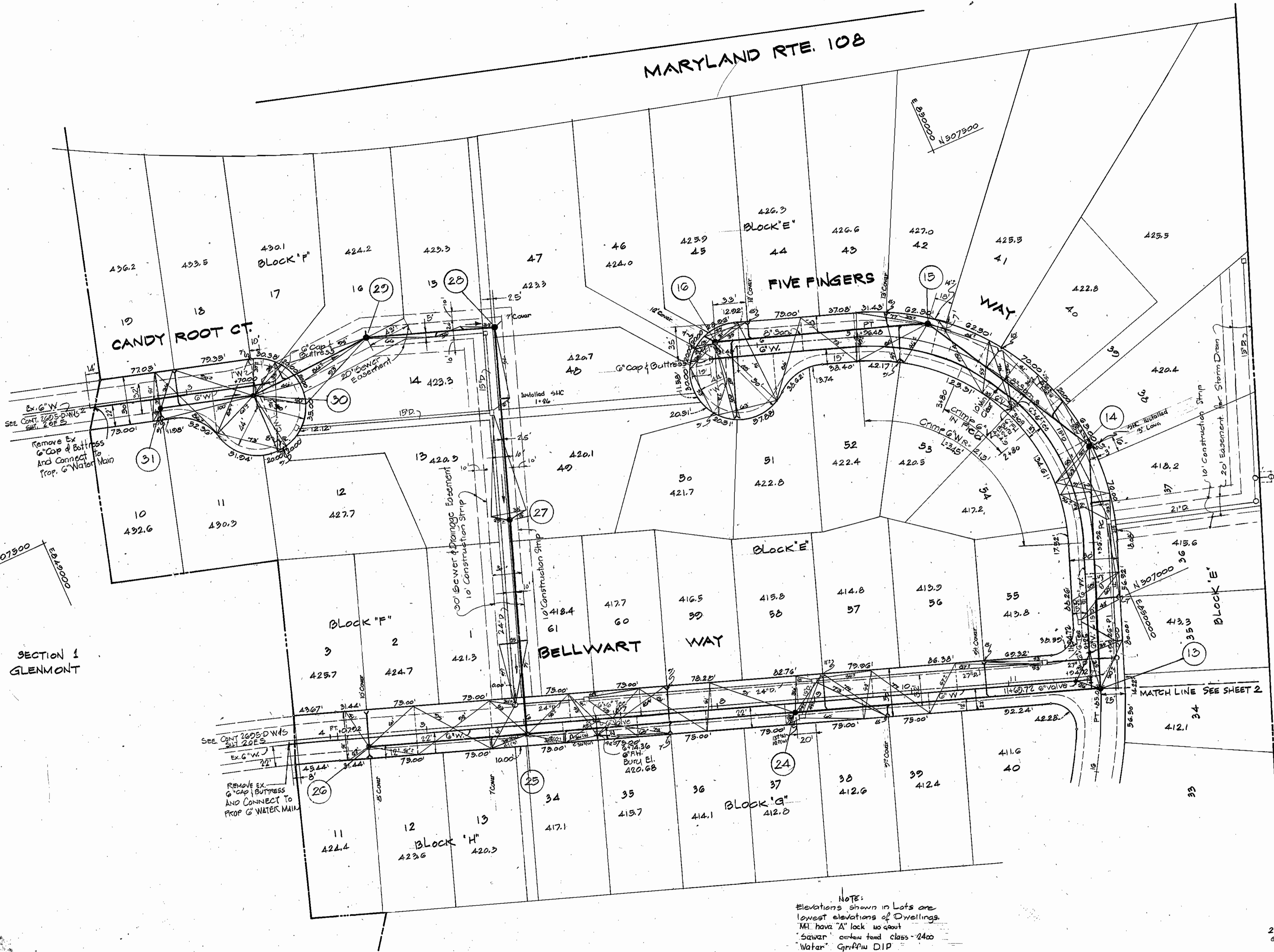
CONTRACT NO. 2709-D-W/S

PLAN OF
 WATER & SEWER MAINS

GLENMONT
 SECTION 1, AREA 2
 ELECTION DISTRICT GUILFORD No. 6

DRAWING
 NO. 2
 OF 5
 SCALE
 1"=50'

MARYLAND RTE. 108



SECTION 1
GLENMONT

VILLAGE OF LONG REACH
SECTION 1 AREA 1
18/44



MCA ENGINEERING CORPORATION
ENGINEERS
1020 CROMWELL BRIDGE ROAD
TOWSON, MD. 21204

DEPARTMENT OF PUBLIC WORKS
HOWARD COUNTY, MARYLAND
DATE: 6-10-77
CHIEF BUREAU OF ENGINEERING

CONTRACT No. 2700-D-W45

PLAN OF
WATER & SEWER MAINS

GLENMONT
SECTION 1 AREA 2
ELECTION DISTRICT GUILFORD NO. 6

DRAWING
NO. 3
OF 5

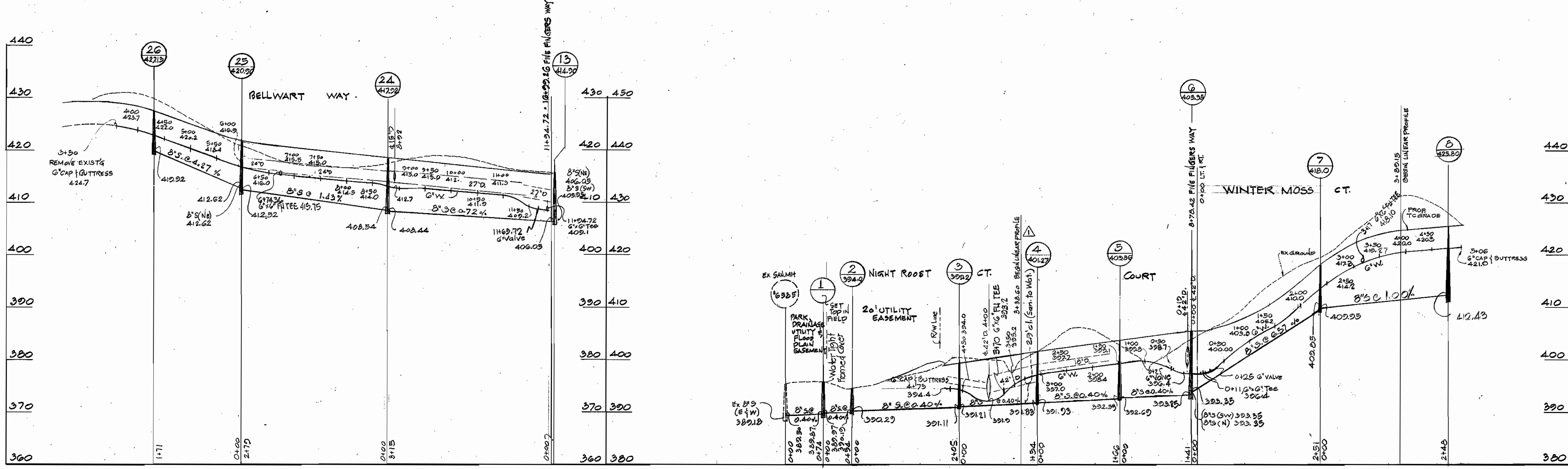
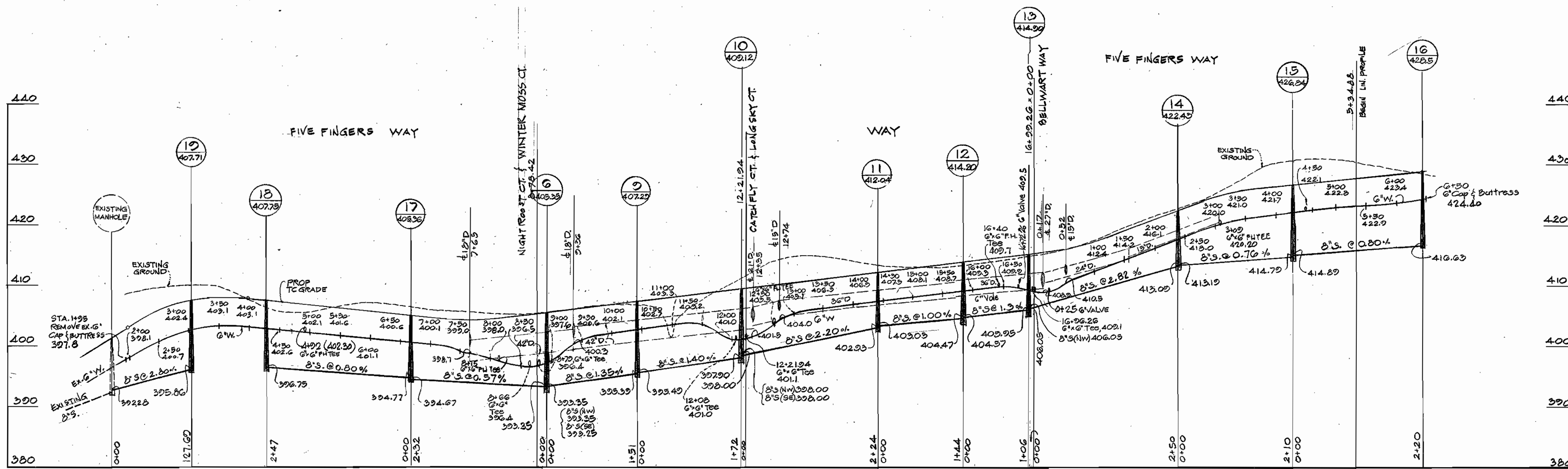
2700-D-W45
GLENMONT
Section 1
Area 2

SCALE
1" = 50'

1-19-77

NOTE:
Elevations shown in Lots are
lowest elevations of Dwellings.
MH have "A" lock w/out
"Sewer" contain lead class-2400
Water" Griffin DIP

As Built January 3, 1978



As Built Notes:
 MI have 'A' lock up groud
 Sewer: Certain lead class-2400
 Water: Griffin DIP

No.	Date	Revision
1	8-5-77	Add dim. Clear betw. San. & Wat. Night Root Ct.



MCA ENGINEERING CORPORATION
 ENGINEERS
 1020 CROMWELL BRIDGE ROAD
 TOWSON, MD, 21204

DEPARTMENT OF PUBLIC WORKS
 HOWARD COUNTY, MARYLAND
 6-10-77
 DATE

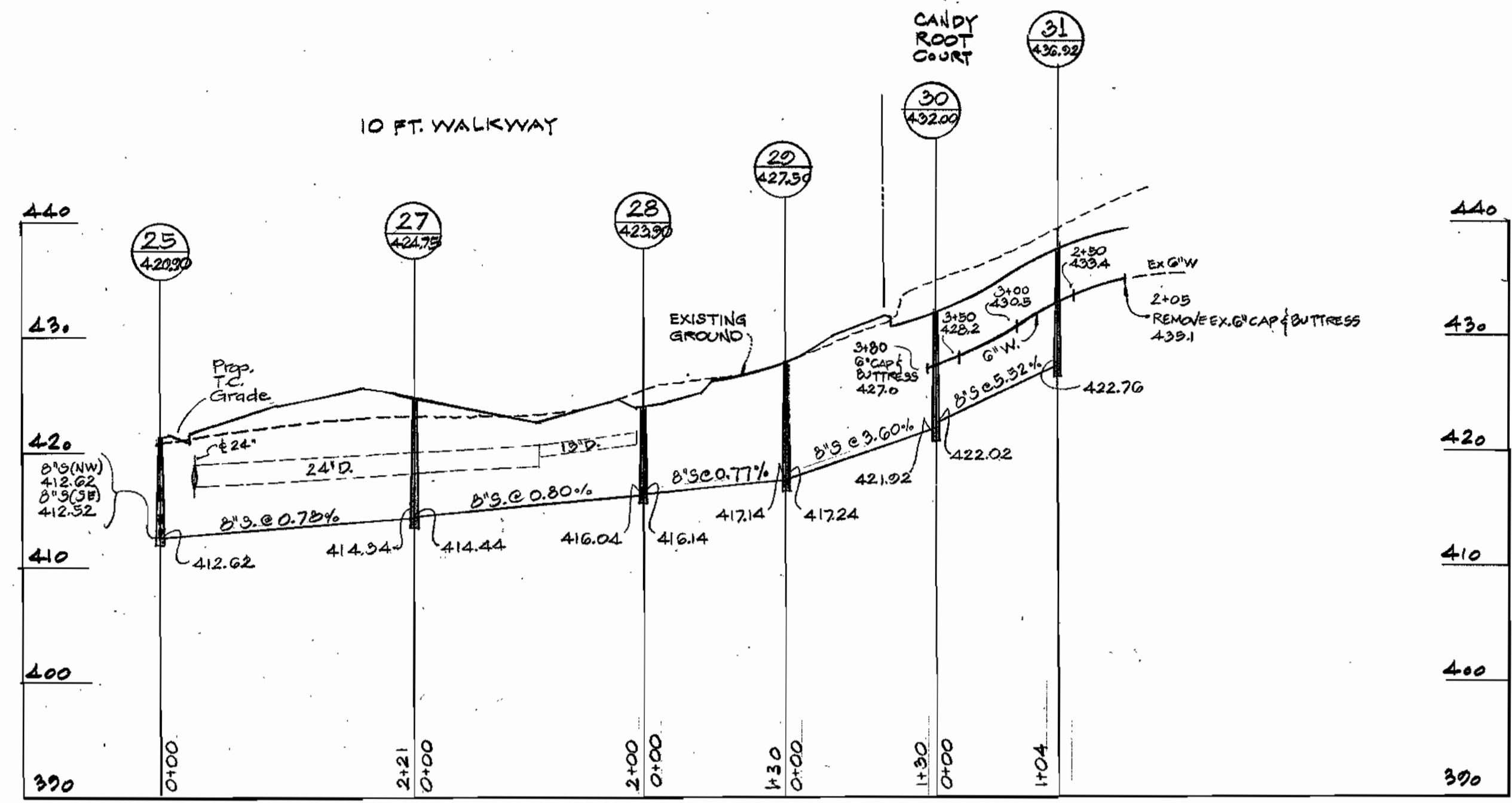
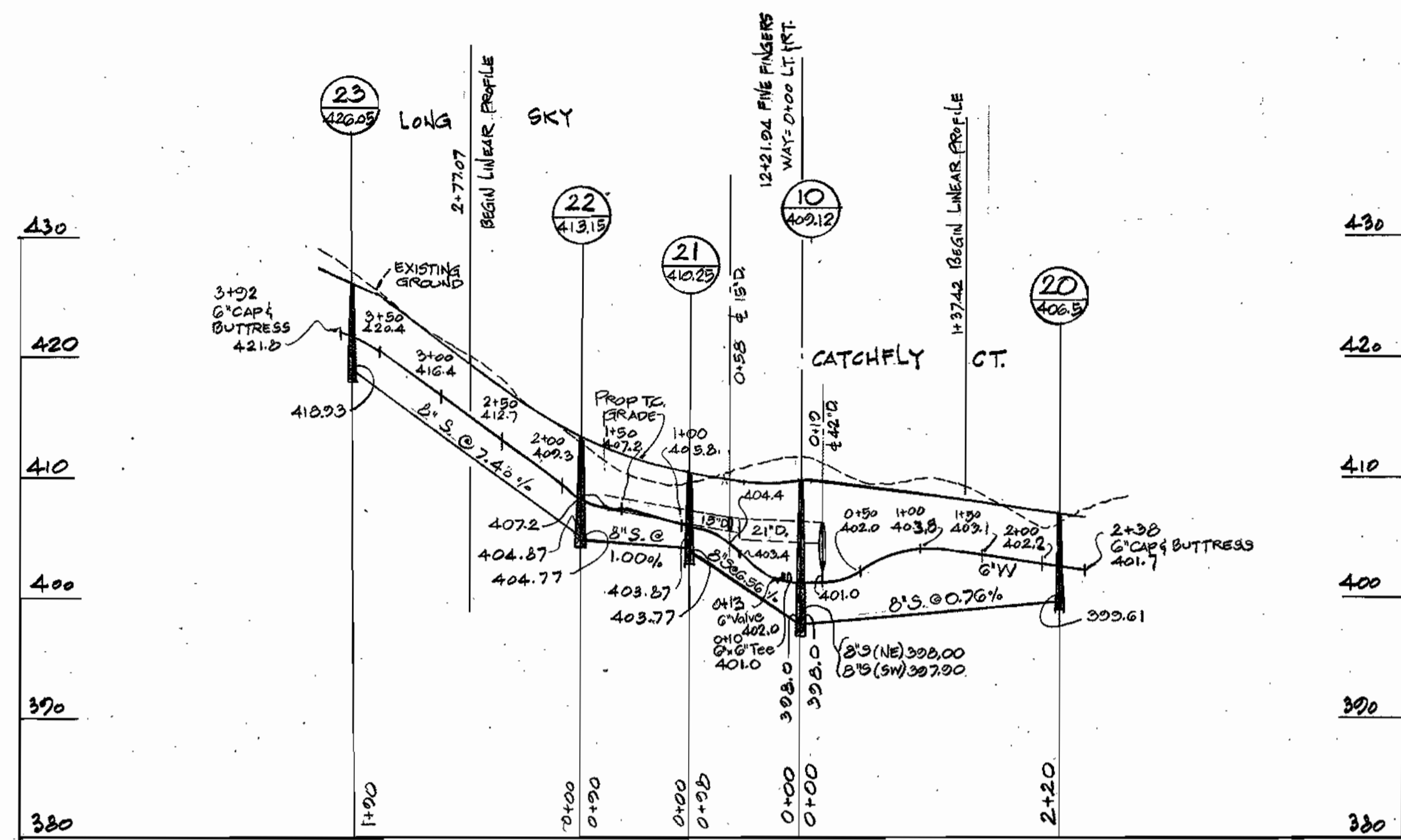
CONTRACT NO. 709-D-W/S

PROFILES OF
 WATER & SEWER MAINS

GLENMONT
 SECTION 1 AREA 2
 ELECTION DISTRICT GUILFORD No. 6

DRAWING
 No. 4
 OF 5
 SCALE:
 HOR. 1"=100'
 VERT. 1"=10'

2709-D-W/S
 GLENMONT
 Section 1
 Area 2



"As Built Notes"
 MH have "A" lock no-crook
 "Sewer" Certain Teed class 4400
 "Water" Griffin DIP

2700-D-W/S
 GLENMONT
 Section 1
 Area 2

MCA ENGINEERING CORPORATION ENGINEERS 1020 CROMWELL BRIDGE ROAD TOWSON, MD 21204	DEPARTMENT OF PUBLIC WORKS HOWARD COUNTY, MARYLAND DATE 6-10-77 DATE 6-1-77	CONTRACT NO. 2700-D-W/S	PROFILES OF WATER & SEWER MAINS	GLENMONT SECTION 1 AREA 2 ELECTION DISTRICT GUILFORD NO. 6	DRAWING NO. 5 OF 5	SCALE HOR. 1"=100' VERT. 1"=10' 1-18-77
---	--	-------------------------	------------------------------------	--	--------------------------	--

As Built January 3, 1978