

# CONTRACT 2708-D W & S

DEPARTMENT OF PUBLIC WORKS  
HOWARD COUNTY, MARYLAND

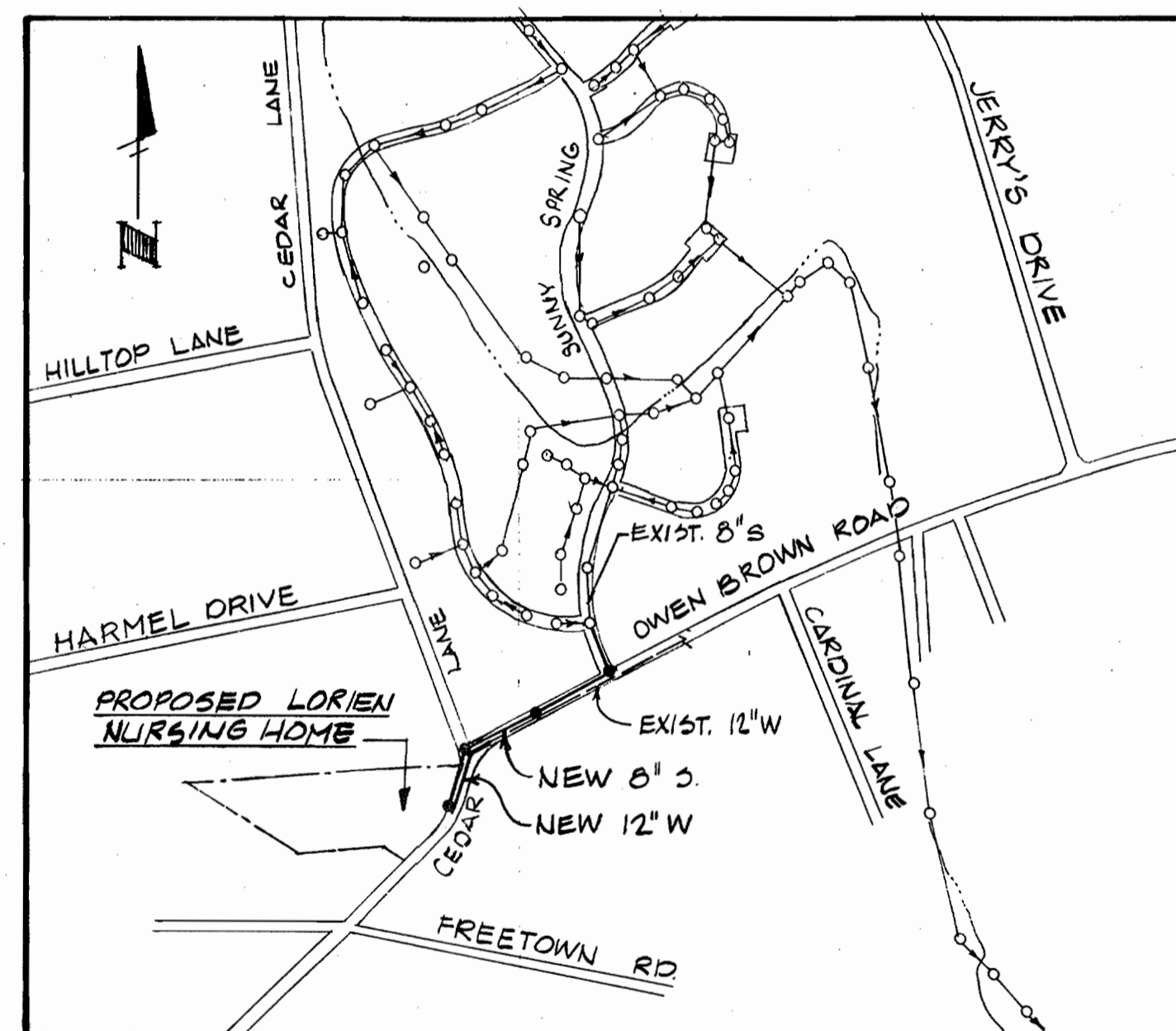
## WATER AND SEWER EXTENSIONS TO SERVE THE LORIENT NURSING HOME

**GENERAL NOTES**

1. APPROXIMATE LOCATIONS OF EXISTING MAINS ARE SHOWN. THE CONTRACTOR SHALL TAKE ALL NECESSARY PRECAUTIONS TO PROTECT EXISTING MAINS AND SERVICES AND MAINTAIN UNINTERRUPTED SUPPLY.
2. ALL HORIZONTAL CONTROLS ARE BASED ON MARYLAND STATE COORDINATE.
3. ALL VERTICAL CONTROLS ARE BASED ON U.S.G.S. DATUM.
4. ALL PIPE ELEVATIONS SHOWN ARE INVERT ELEVATIONS.
5. CLEAR ALL UTILITIES BY A MINIMUM OF 6". CLEAR ALL POLES 2'-0" MINIMUM OR TUNNEL AS REQUIRED.
6. FOR ALL STANDARD DETAILS SEE STANDARDS BOUND IN SPECIFICATIONS.
7. CONTRACTOR SHALL LOCATE EXISTING UTILITIES IN ADVANCE OF CONSTRUCTION OPERATIONS IN THE VICINITY OF PROPOSED UTILITIES.
8. CONTRACTOR SHALL NOTIFY THE FOLLOWING UTILITIES OR AGENCIES AT LEAST FIVE (5) DAYS BEFORE STARTING WORK SHOWN ON THESE PLANS:

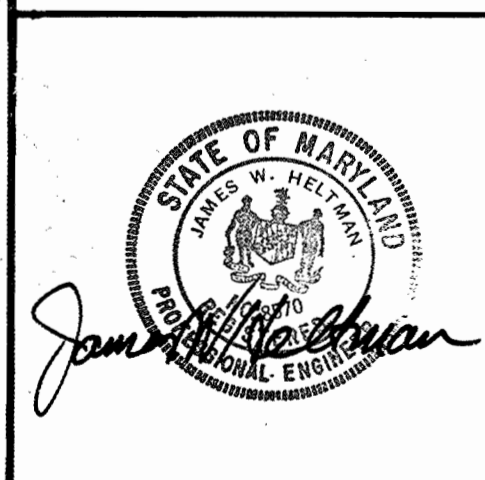
BALTIMORE GAS AND ELECTRIC COMPANY - UNDERGROUND  
ELECTRIC DISTRIBUTION ENGINEERING - "DAMAGE CONTROL" - 234-5691  
BALTIMORE GAS AND ELECTRIC COMPANY - UNDERGROUND  
GAS DISTRIBUTION ENGINEERING - 559-0100  
CHESAPEAKE AND POTOMAC TELEPHONE CO. - 725-9976

9. TREES ARE TO BE PROTECTED FROM DAMAGE TO MAXIMUM EXTENT. TREES LOCATED WITHIN THE CONSTRUCTION STRIP ARE NOT TO BE REMOVED OR DAMAGED BY THE CONTRACTOR.
10. CONTRACTOR SHALL REMOVE TREES, STUMPS AND ROOTS ALONG LINE OF EXCAVATION AS DIRECTED BY THE ENGINEER. PAYMENT FOR SUCH REMOVAL SHALL BE INCLUDED IN THE UNIT PRICE BID FOR EXCAVATION AND BACKFILL FOR WATER AND SEWER MAINS.
11. PLACE REGULATION "MEN-WORKING" AND WARNING SIGNS ARE REQUIRED TO COMPLY WITH MARYLAND STATE HIGHWAY ADMINISTRATION MANUAL OF TRAFFIC CONTROL FOR HIGHWAY CONSTRUCTION AND MAINTENANCE OPERATIONS.
12. ALL WATER MAINS TO BE D.I.P.
13. TOP OF ALL WATER MAINS TO HAVE A MINIMUM OF 3-1/2' COVER UNLESS OTHERWISE NOTED.
14. ALL VALVES SHALL BE STRAPPED TO TEES IN ACCORDANCE WITH STANDARD DETAILS.
15. BLOCK ALL FITTINGS WITH CONCRETE, SEE STANDARDS BOUND IN SPECIFICATIONS.
16. BURY LINE ELEVATIONS ON FIRE HYDRANTS SHALL BE SET TO THE ELEVATIONS SHOWN ON THE DRAWINGS. ALL FIRE HYDRANTS SHALL BE STRAPPED AND BUTTRESSED WITH CONCRETE IN ACCORDANCE WITH STANDARD DETAILS. SOIL AROUND THE FIRE HYDRANT TO BE COMPACTED IN ACCORDANCE WITH SECTION 5-15 OF THE STANDARD SPECIFICATIONS.
17. ALL SEWER MAINS SHALL BE CLASS 3300, UNLESS OTHERWISE NOTED.
18. THE CONTRACTOR SHALL PROVIDE A JOINT IN ALL SEWER MAINS WITHIN 2'-0" OF EXTERIOR MANHOLE WALL.
19. ALL MANHOLES SHALL BE 4'-0" INSIDE DIAMETER, UNLESS OTHERWISE NOTED.



LOCATION MAP  
SCALE: 1" = 600'

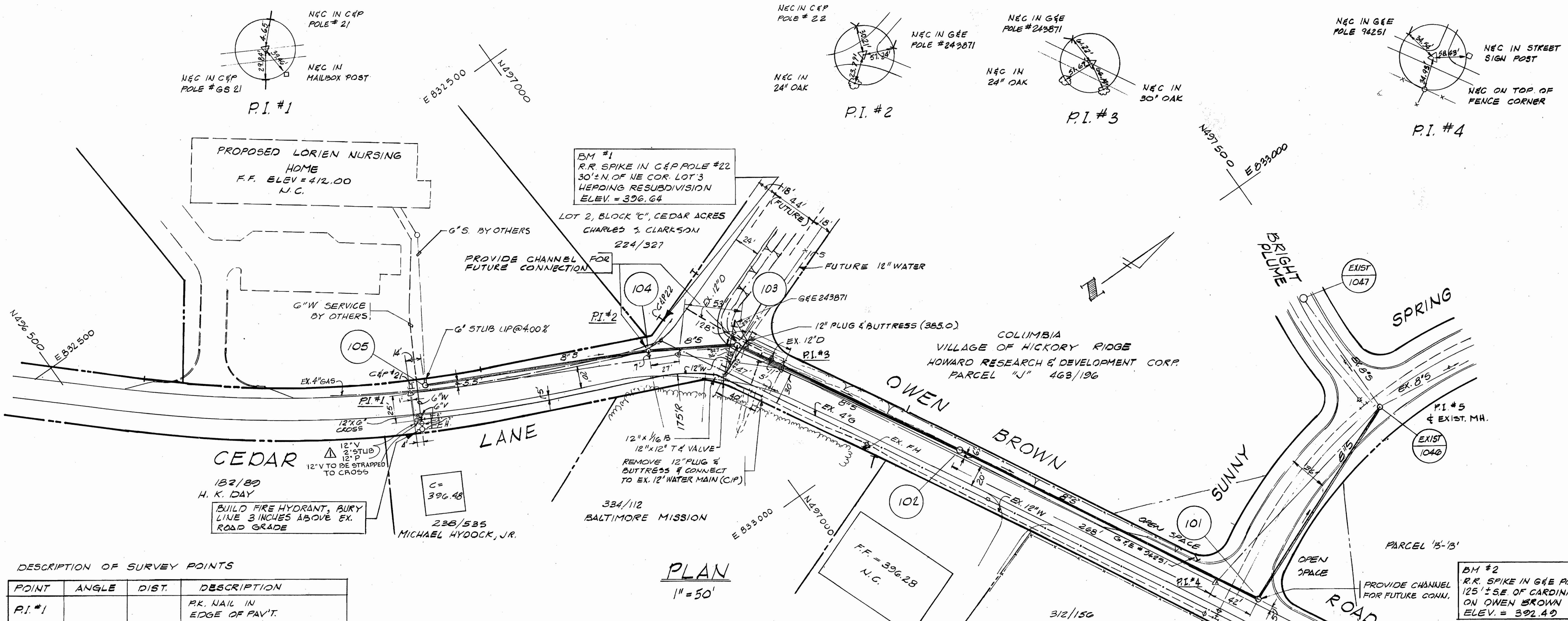
QUANTITIES	
ITEM	QUANTITY
8" SAN. S.	1046 LF 1030 LF
	25 VF
SAN. MH	40 VF
	275 LF
12" WATER	376 LF
FIRE HYDRANT	1 EA



8" Sewer - ACP - Class 3300 - CERTAIN TEED  
12" Water - DIP - GRIFFIN

LORIENT NURSING HOME  
OWEN BROWN RD - CEDAR LA.  
CONTRACT 2708-D-W&S

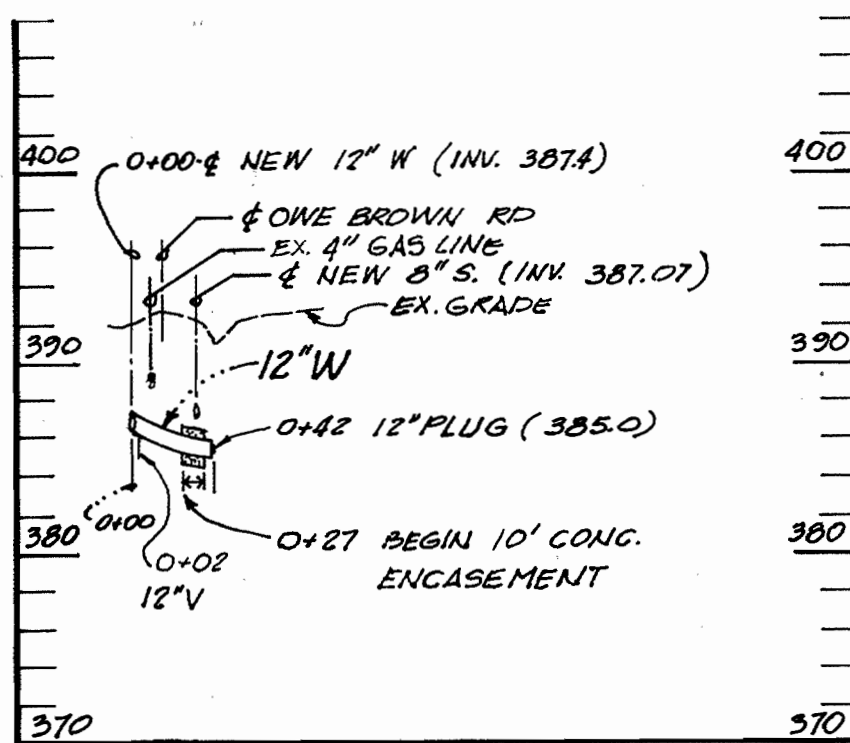
ALPHATEC, P.C. ENGINEERS CONSULTANTS PLANNERS 4301 CONNECTICUT AVE, NW WASHINGTON, D.C.	DEPARTMENT OF PUBLIC WORKS HOWARD COUNTY, MARYLAND 3-10-77 W. O. Gilbert CHIEF - BUREAU OF ENGINEERING	CONTRACT NO. 2708-D-W&S	TITLE SHEET	OWEN BROWN ROAD - CEDAR LANE WATER & SEWER EXTENSIONS TO SERVE LORIENT NURSING HOME ELECTION DISTRICT No. 5	DRAWING	SCALE	DES JH
					NO. 1	1" = 600'	DR JH
					OF 2		CK DFA
							12.6.76



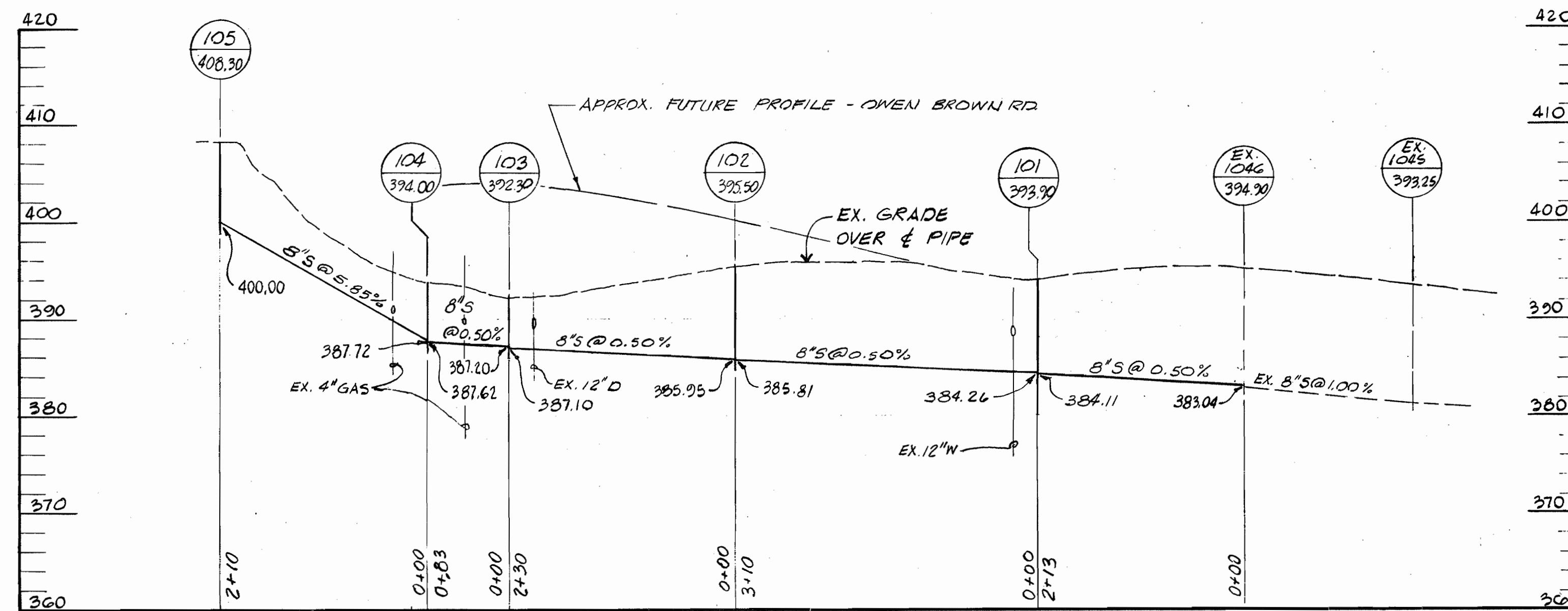
PLAN  
1" = 50'

DESCRIPTION OF SURVEY POINTS

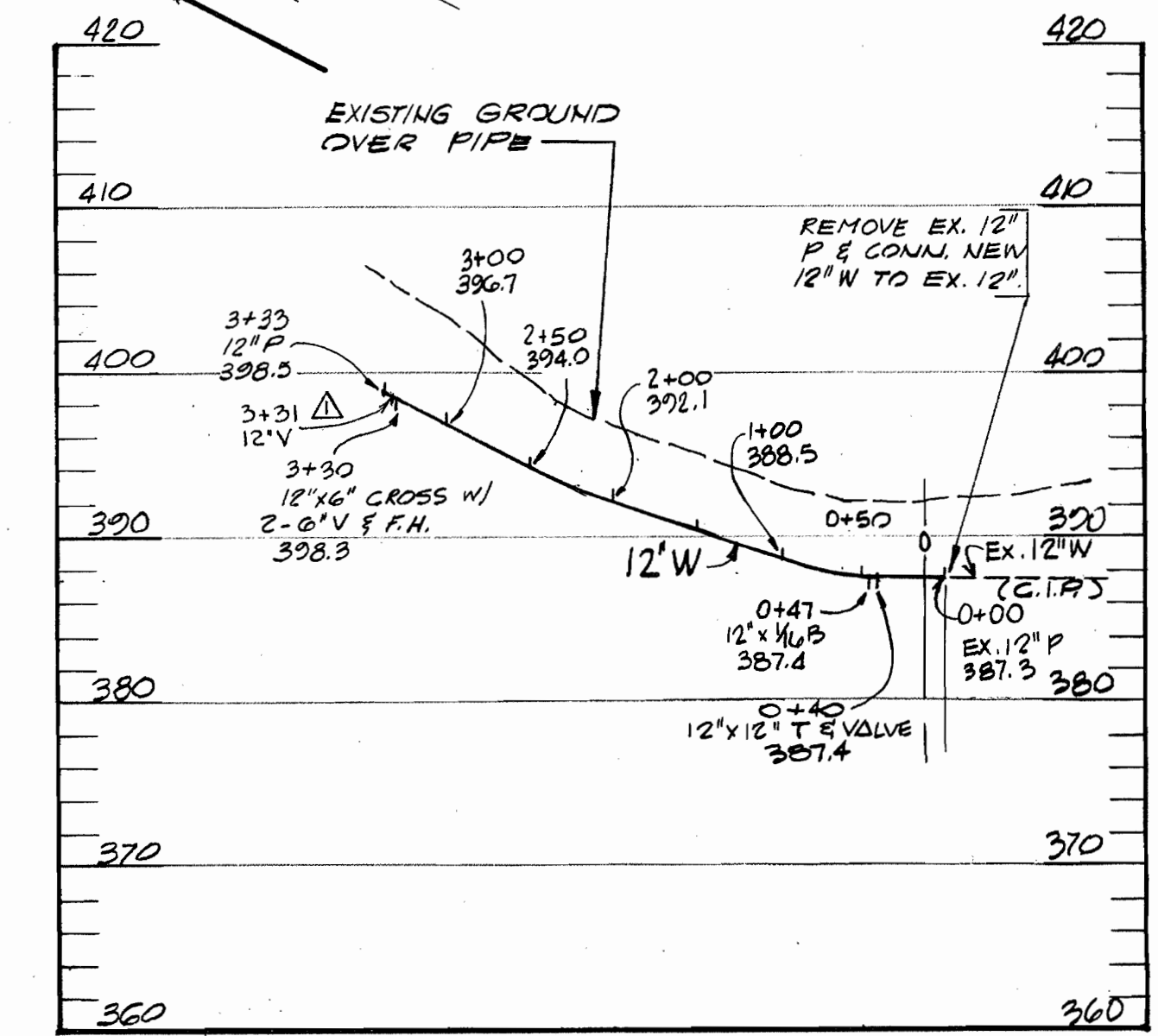
POINT	ANGLE	DIST.	DESCRIPTION
P.I. #1		251.05'	R.R. NAIL IN EDGE OF PAV'T.
P.I. #2	163°33'	97.22'	R.R. SPIKE @ CENTER OF INTERSECTION
P.I. #3	162°00'	451.24'	NAIL & CAP IN EDGE OF PAV'T.
P.I. #4	104°26'30"	224.85'	NAIL & CAP IN PAV'T NEAR SUNNY SPRING
P.I. #5			EXIST. MANHOLE IN SUNNY SPR. @ BRIGHT PLUME



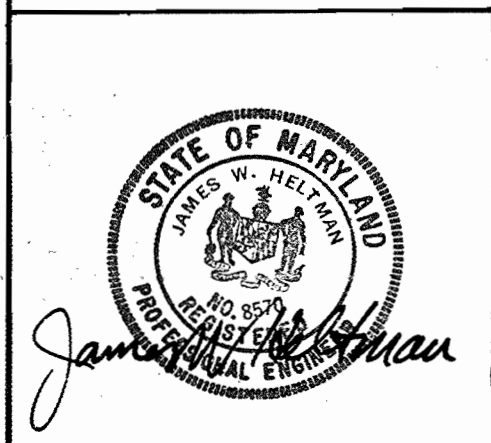
PROFILE - 12" WATER LINE CROSSING OWEN BROWN RD.  
1" = 100' H, 1" = 10' V



SEWER MAIN PROFILE  
1" = 100' H, 1" = 10' V



12" WATER LINE PROFILE  
1" = 100' H, 1" = 10' V



ALPHATEC, P.C.  
ENGINEERS CONSULTANTS PLANNERS  
4301 CONNECTICUT AVE., NW WASHINGTON, D.C.

DEPARTMENT OF PUBLIC WORKS  
HOWARD COUNTY, MARYLAND  
DATE 3-10-77  
CHIEF - BUREAU OF ENGINEERING

CONTRACT NO.  
2708-D-WES

PLAN OF WATER & SEWER MAINS

OWEN BROWN ROAD - CEDAR LANE WATER & SEWER EXTENSIONS TO SERVE LORIENT NURSING HOME ELECTION DISTRICT No. 5

DRAWING NO. 2 OF 2  
SCALE 1" = 50'  
DESIGNER DR: JH  
CHECKER CK: OFA  
DATE 12-6-76

No.	Date	Revision
1	3-22-77	Add 12" V & 2" stub @ End of 12" W (Plan & Profile)

As Built 6-15-77

JANUARY 26, 1977  
FEB. 21, 1977