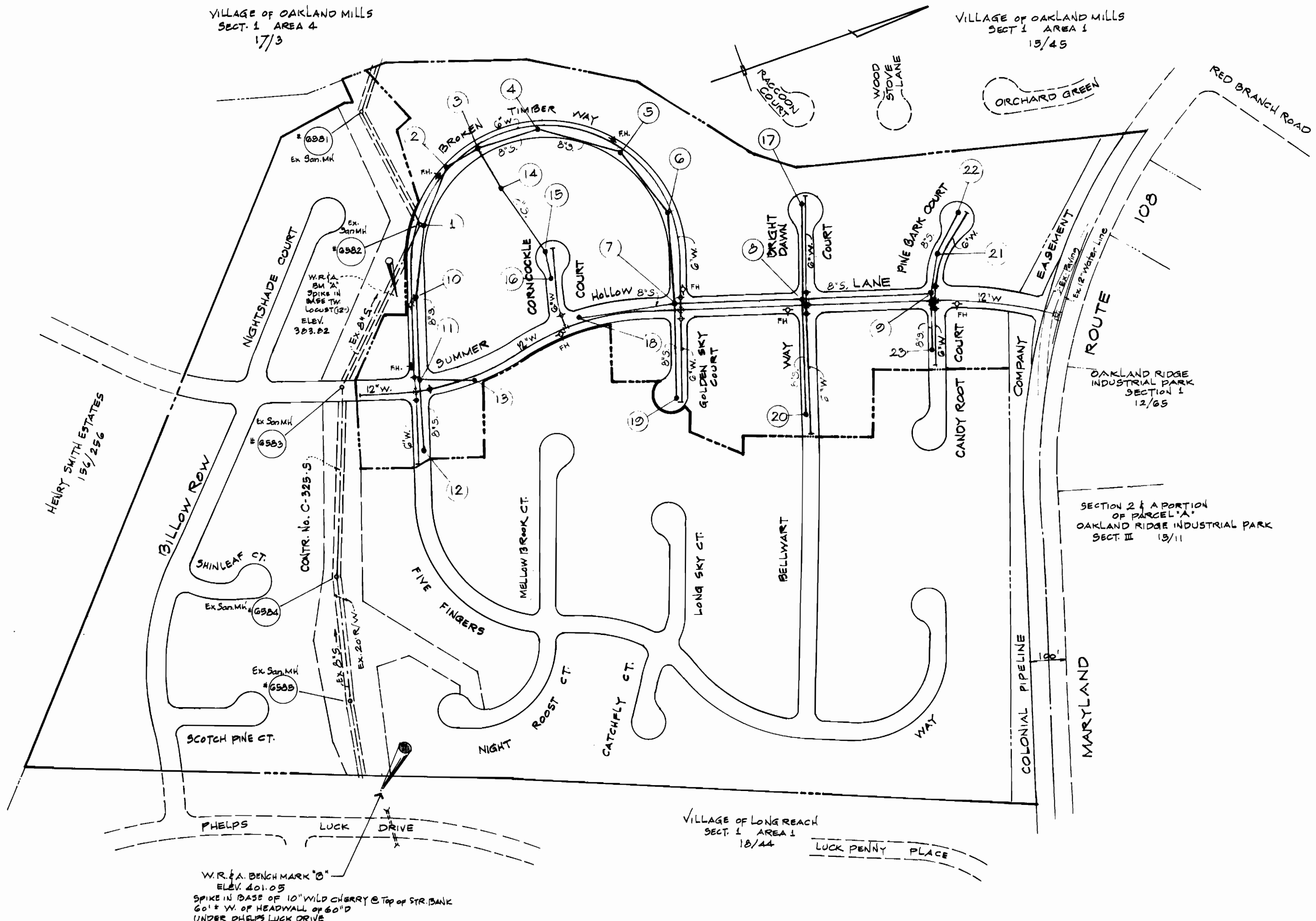


VICINITY MAP
SCALE: 1" = 200'

GENERAL NOTES

- Approximate locations of existing mains are shown. The contractor shall take all necessary precautions to protect existing mains and services and maintain uninterrupted supply. Any damage incurred shall be repaired immediately.
- All horizontal controls are based on Maryland State Coordinates.
- All vertical controls are based on U.S.G.S. Datum.
- All pipe elevations shown are invert elevations.
- Clear all utilities by a minimum of 8". Clear all poles 2'-0" minimum or tunnel as required.
- For all standard details see standards bound in specifications.
- Contractor shall locate existing utilities in advance of construction operations in the vicinity of proposed utilities.
- Contractor shall notify the following utilities or agencies at least five (5) days before starting work shown on these plans:
 State Highway Administration - 531-5533
 Baltimore Gas and Electric Company - Underground Electric Distribution Engineering - "Damage Control" - 234-5601
 Baltimore Gas and Electric Company - Underground Gas Distribution Engineering - 559-0100
 Chesapeake and Potomac Telephone Co. - 725-8978
 American Telephone and Telegraph - Cable Location Division - 301-383-3553
 Colonial Pipeline Company - 781-4841
- Trees are to be protected from damage to maximum extent. Trees located within the construction strip are not to be removed or damaged by the contractor.
- Contractor shall remove trees, stumps and roots along line of excavation as directed by the Engineer. Payment for such removal shall be included in the unit price bid for excavation and backfill for water and sewer mains.
- Place regulation "Men Working" and warning signs as required to comply with Maryland State Highway Administration Manual of Traffic Control for Highway Construction and Maintenance Operations.
- All water mains to be C.I.P., D.I.P., or A.C.P. unless otherwise noted.
- Top of all water mains to have a minimum of 3 1/2' cover unless otherwise noted.
- All valves shall be strapped to trees in accordance with standard details.
- Block all fittings with concrete, see standards bound in specifications.
- Bury line elevations on fire hydrants shall be set to the elevations shown on the drawings. All fire hydrants shall be strapped and buttressed with concrete in accordance with standard details. Soil around the fire hydrant to be compacted in accordance with Section 5-15 of the Standard Specifications.
- All sewer mains shall be C.S.P.X., V.C.P.X., or A.C.P. Class 2400 unless otherwise noted.
- The contractor shall provide a joint in all sewer mains within 2'-0" of exterior manhole wall.
- All manholes shall be 4'-0" inside diameter, unless otherwise noted.
- Cost of Polyfilter X and rip rap to be included in the unit price bid for furnishing and laying of sewer mains.

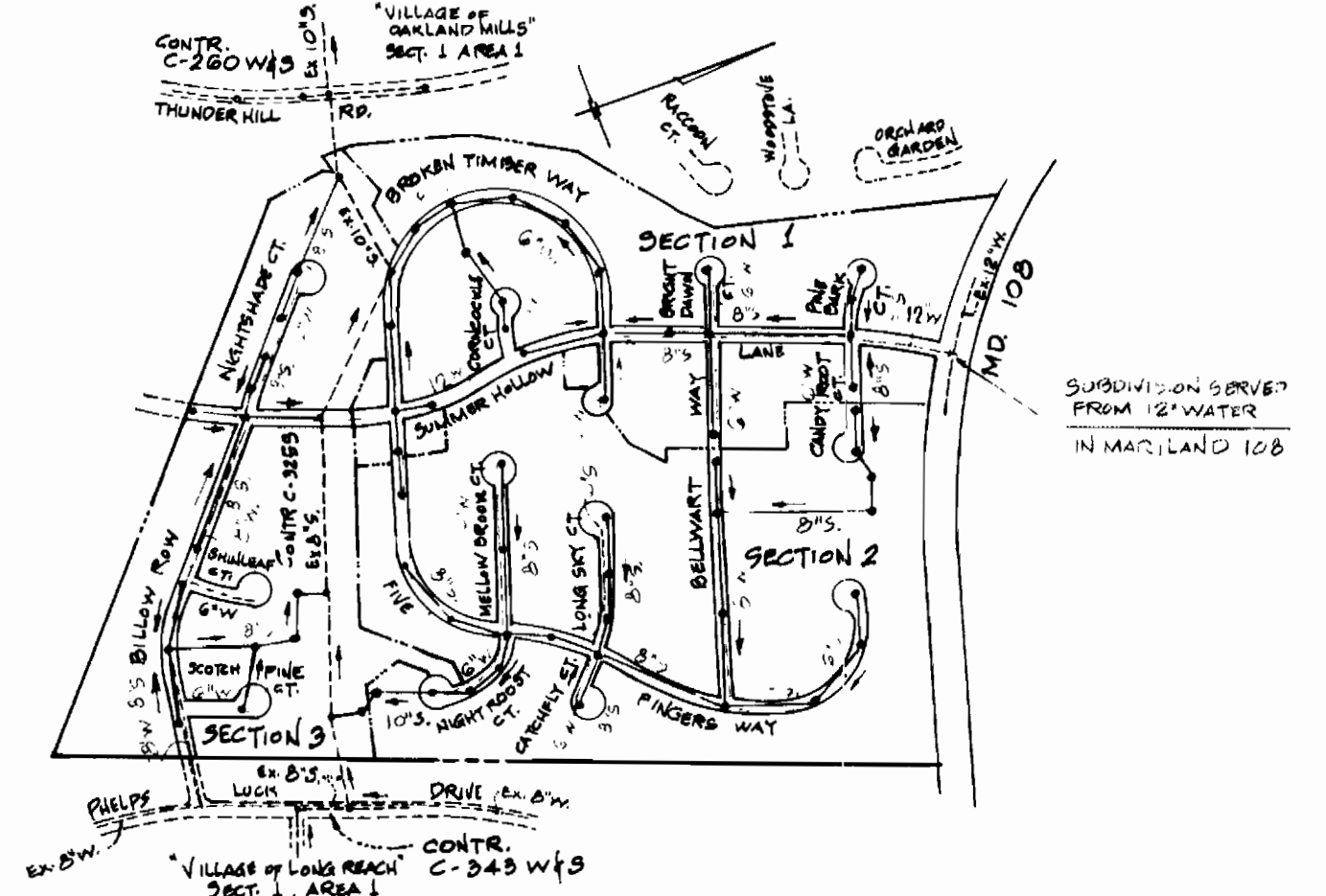


LOCATION PLAN

SCALE: 1" = 200'

QUANTITIES	
ITEM	QUANTITY
8" SEWER	4633 LF+566
12" WATER	4966 LF+2074
6" WATER	3817 LF+3535
FIRE HYDRANTS	7
12" WATER (D.I.P.) (C.I.P.)	54 LF

Sewer: 8" ACP-Johns Manville - Class 2400
 Water: 2" & 6" ACP-Johns Manville - Class 150
 Water: 12" CIP (As shown on Profile Sheet No.5)
 Water: 6" DIP (As shown on Profile Sheet No.4 & 5)



LOCATION PLAN

SCALE: 1" = 600'



MCA ENGINEERING CORPORATION
 ENGINEERS
 1020 CROMWELL BRIDGE ROAD
 TOWSON, MD 21204

DEPARTMENT OF PUBLIC WORKS
 HOWARD COUNTY, MD
 12-2-76 DATE
 W. J. [Signature] CHIEF BUREAU OF ENGINEERING

CONTRACT NO. 2095-D-W45

LOCATION MAP OF
 WATER & SEWER MAINS

GLENMONT
 SECTION 1 AREA 1
 ELECTION DISTRICT GUILFORD NO. 6

DRAWING NO. 1 OF 5
 SCALE 1" = 200'

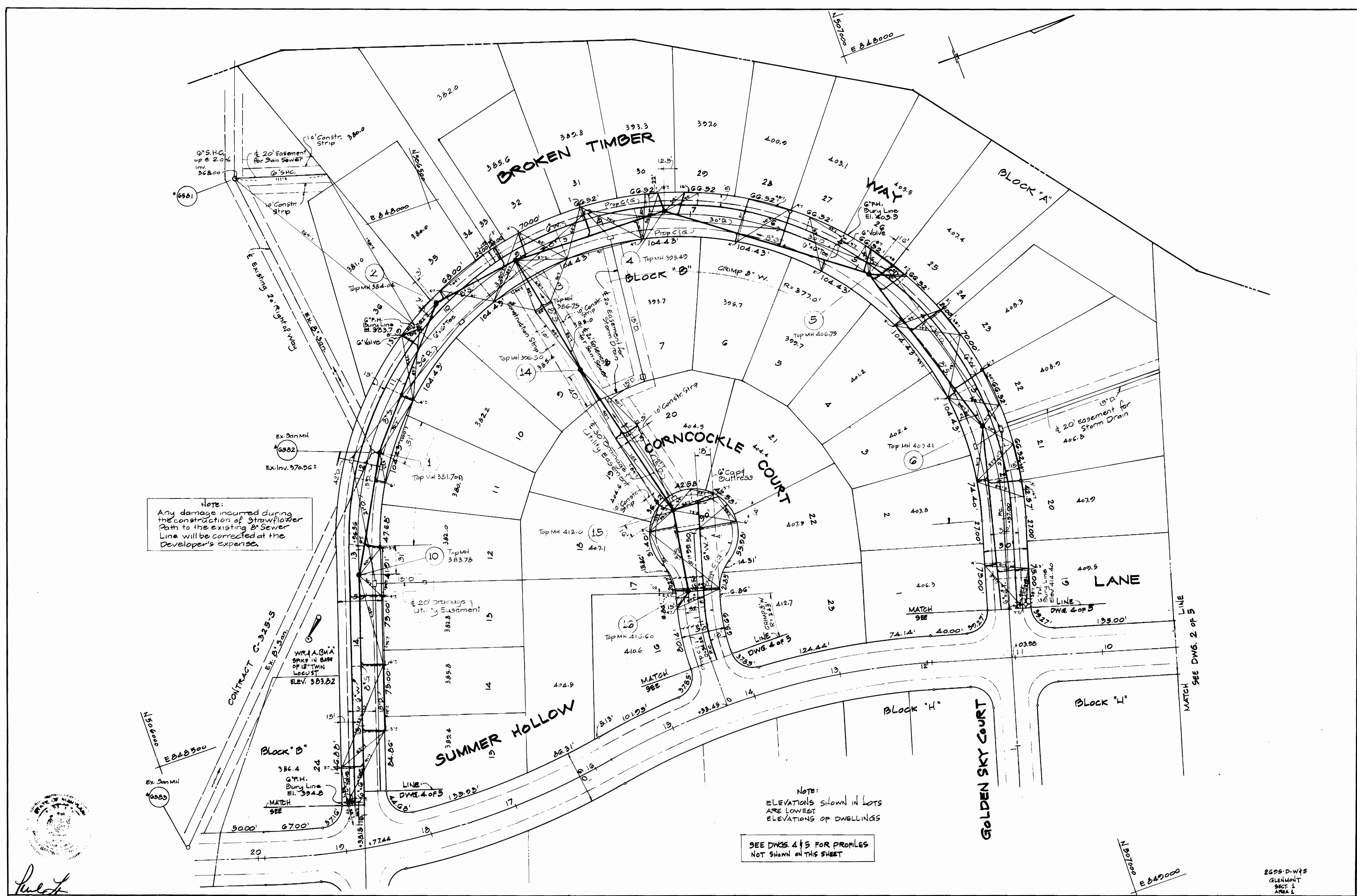
2095-D-W45
 GLENMONT
 SECT. 1
 AREA 1

AS BUILT 6-10-77

10-1-76

WS 695-D-W45/1

WS 695-D-W45/3



MCA ENGINEERING CORPORATION
 ENGINEERS
 1020 CROMWELL BRIDGE ROAD
 TOWSON, MD. 21284

DEPARTMENT OF PUBLIC WORKS
 HOWARD COUNTY, MARYLAND
 P. J. RAY
 DIRECTOR
 12-2-76
 DATE
 W. O. ALLEN
 CHIEF, BUREAU OF ENGINEERING
 12-2-76
 DATE

CONTRACT NO. 695-D-W45

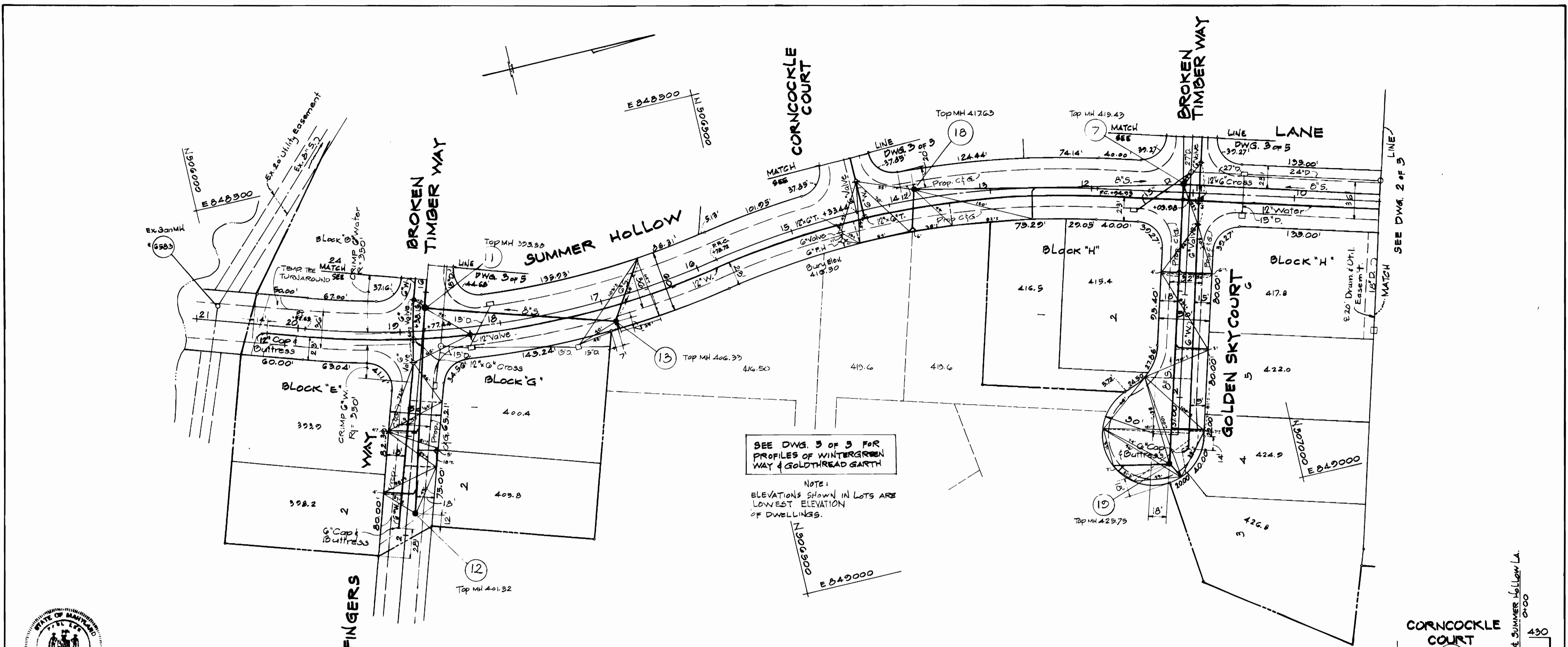
PLAN & PROFILE
 WATER & SEWER MAINS

GLENMONT
 SECTION 1 AREA 1
 ELECTION DISTRICT GUILFORD NO. 6

DRAWING NO. 3 OF 5
 SCALE
 PLAN 1" = 50'
 PROFILE 1" = 100' HOR.
 1" = 10' VERT.
 10-14-76

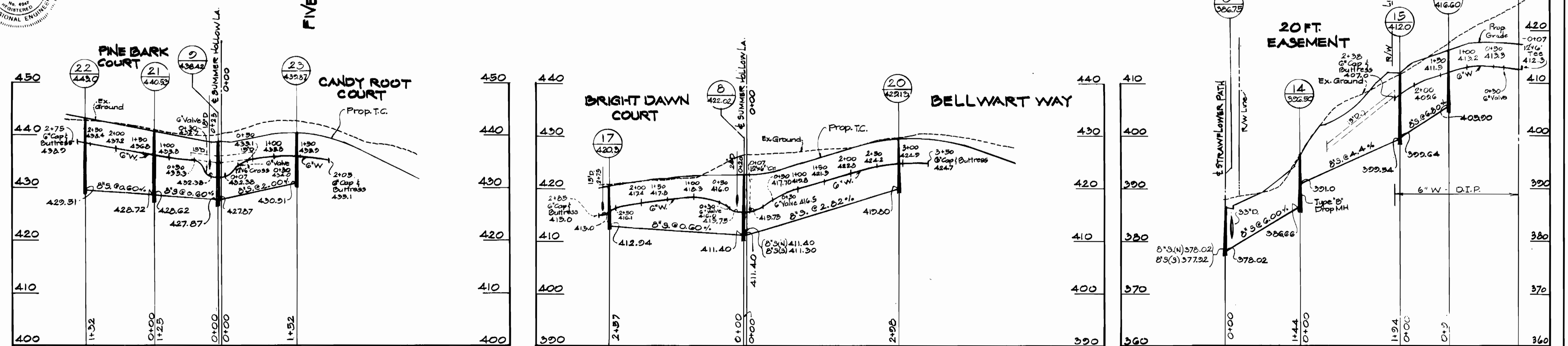
AS-BUILT 6-10-77

WS 695-D-W4S/4



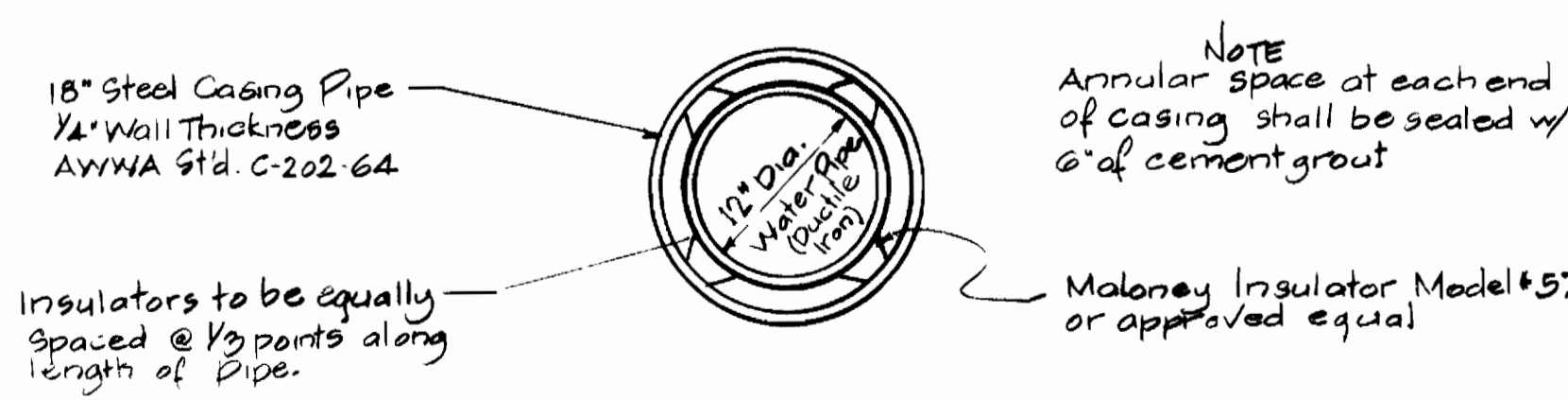
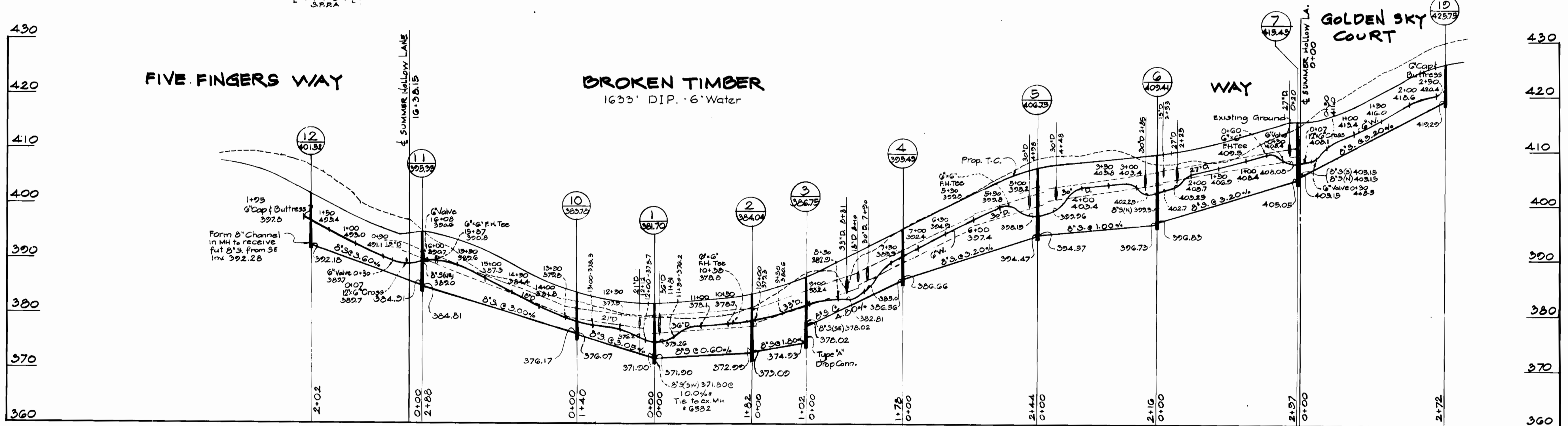
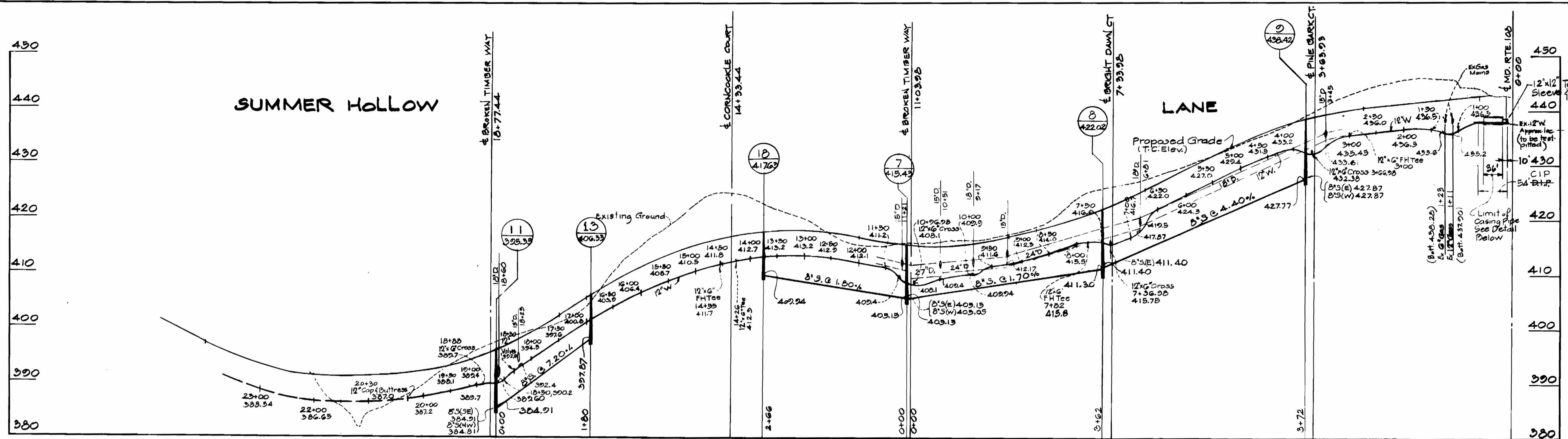
SEE DWG. 3 OF 5 FOR PROFILES OF WINTERGREEN WAY & GOLDTHREAD GARTH

NOTE: ELEVATIONS SHOWN IN LOTS ARE LOWEST ELEVATION OF DWELLINGS.



<p>MCA ENGINEERING CORPORATION ENGINEERS 1020 CROMWELL BRIDGE ROAD TOWSON, MD. 21204</p>	<p>DEPARTMENT OF PUBLIC WORKS HOWARD COUNTY, MARYLAND 13-2-76 DATE</p>	<p>CONTRACT NO. 695-D-W4S</p>	<p>PLAN & PROFILE WATER & SEWER MAINS</p>	<p>GLENMONT SECTION 1 AREA 1 ELECTION DISTRICT GUILFORD NO. 6</p>	<p>DRAWING NO. 4 OF 5 SCALE PLAN: 1"=50' PROFILE: 1"=10' VERT. 10-16-76</p>
--	--	-------------------------------	---	---	---

AS-BUILT 6-10-77



STEEL CASING PIPE DETAIL
Not to Scale

MCA ENGINEERING CORPORATION ENGINEERS 1020 CROMWELL BRIDGE ROAD TOWSON, MD 21204	DEPARTMENT OF PUBLIC WORKS HOWARD COUNTY, MARYLAND <i>P.J. Payne</i> DIRECTOR	CONTRACT NO. <i>605-D-WFS</i> <i>W.D. Pickett 12-2-76</i> DATE CHIEF, BUREAU OF ENGINEERING	PROFILES OF WATER & SEWER MAINS	GLENMONT SECTION 1 AREA 1 ELECTION DISTRICT GUILFORD NO. 6	DRAWING NO. <i>5</i>	SCALE HOR. 1"=100' VERT. 1"=10' 10-14-76
					OF <i>5</i>	

AS-BUILT 6-10-77

WS 695-D-WFS/5