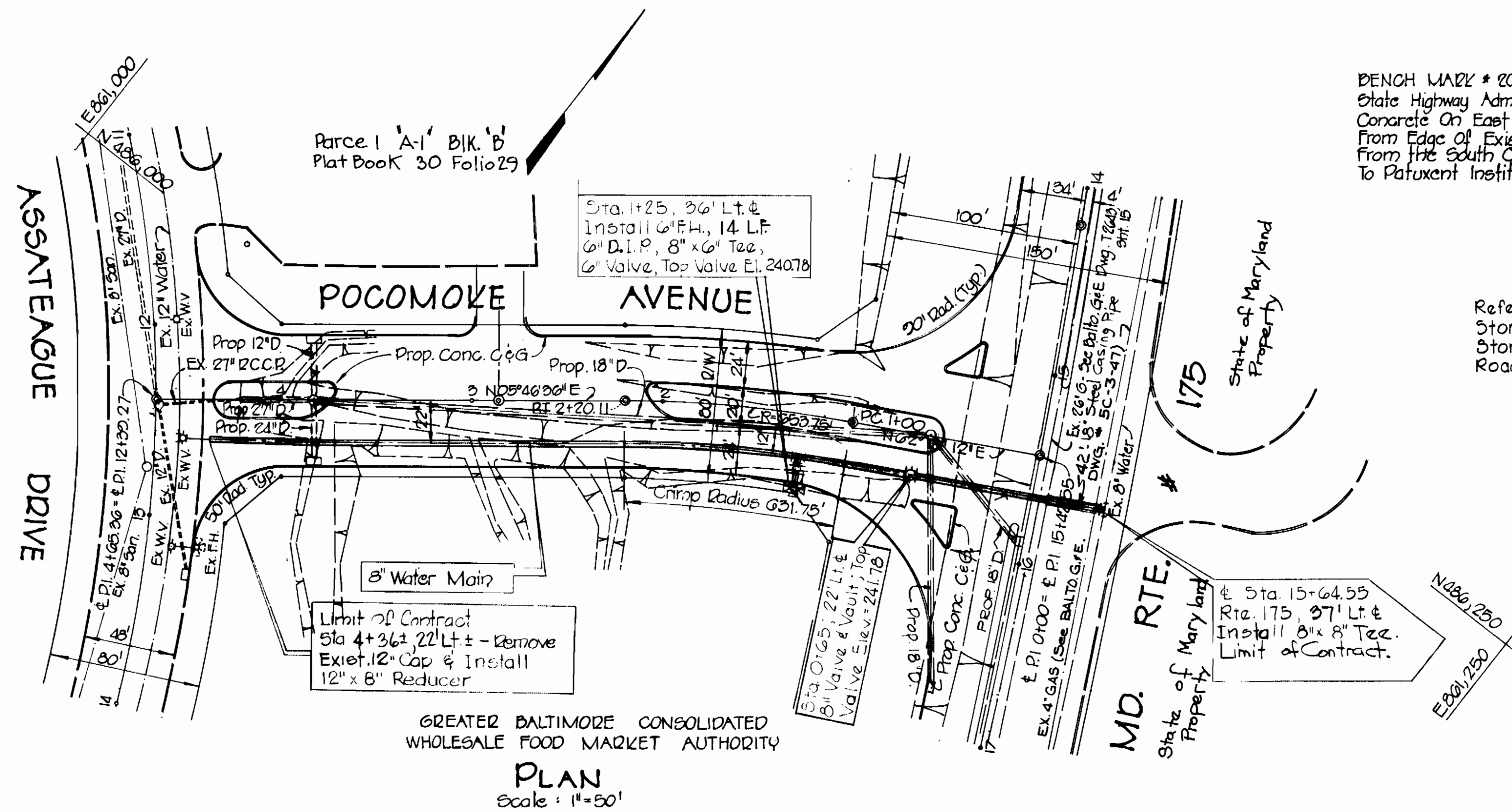


WATER MAIN BILL OF MATERIALS		
SIZE	DESCRIPTION	NO.
8"	Ductile Iron Pipe	453'
8"	Valve	1
8"x8"	Tee	1
12"x8"	Reducer	1
6"	Valve	1
6"	Fire Hydrant	1
8"x8"	Tee	1
6"	Ductile Iron Pipe	14'
8"	1/2 VERT. BENDS	4
8"	Sleeve & Spacer	2

DUCTILE IRON PIPE		
8" CLASS 2	THICKNESS	0.33
6" CLASS 3	THICKNESS	0.31

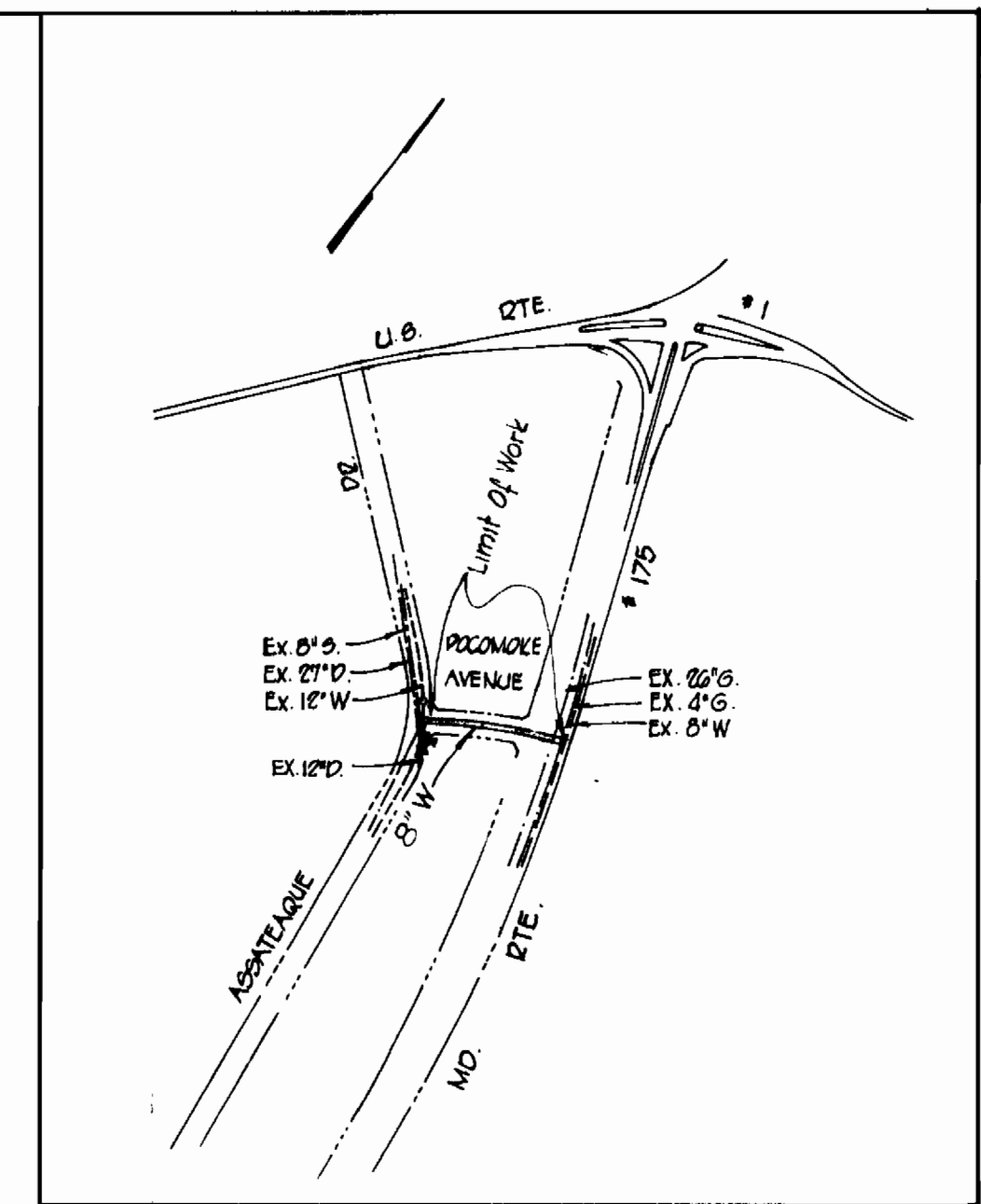
CAST IRON PIPE		
CLASS	THICKNESS	
CLASS	THICKNESS	
CLASS	THICKNESS	

CAST IRON FITTINGS			
CLASS D	CLASS 250		
CLASS B	CLASS 150		



BENCH MARK # 205 ELEV. 220.24  
State Highway Administration Drape Marker Set In Concrete On East Side Of Maryland Rte. 175, 45' From Edge Of Existing Concrete Paving & 50' From The South Curb Of The North Entrance To Patuxent Institute.

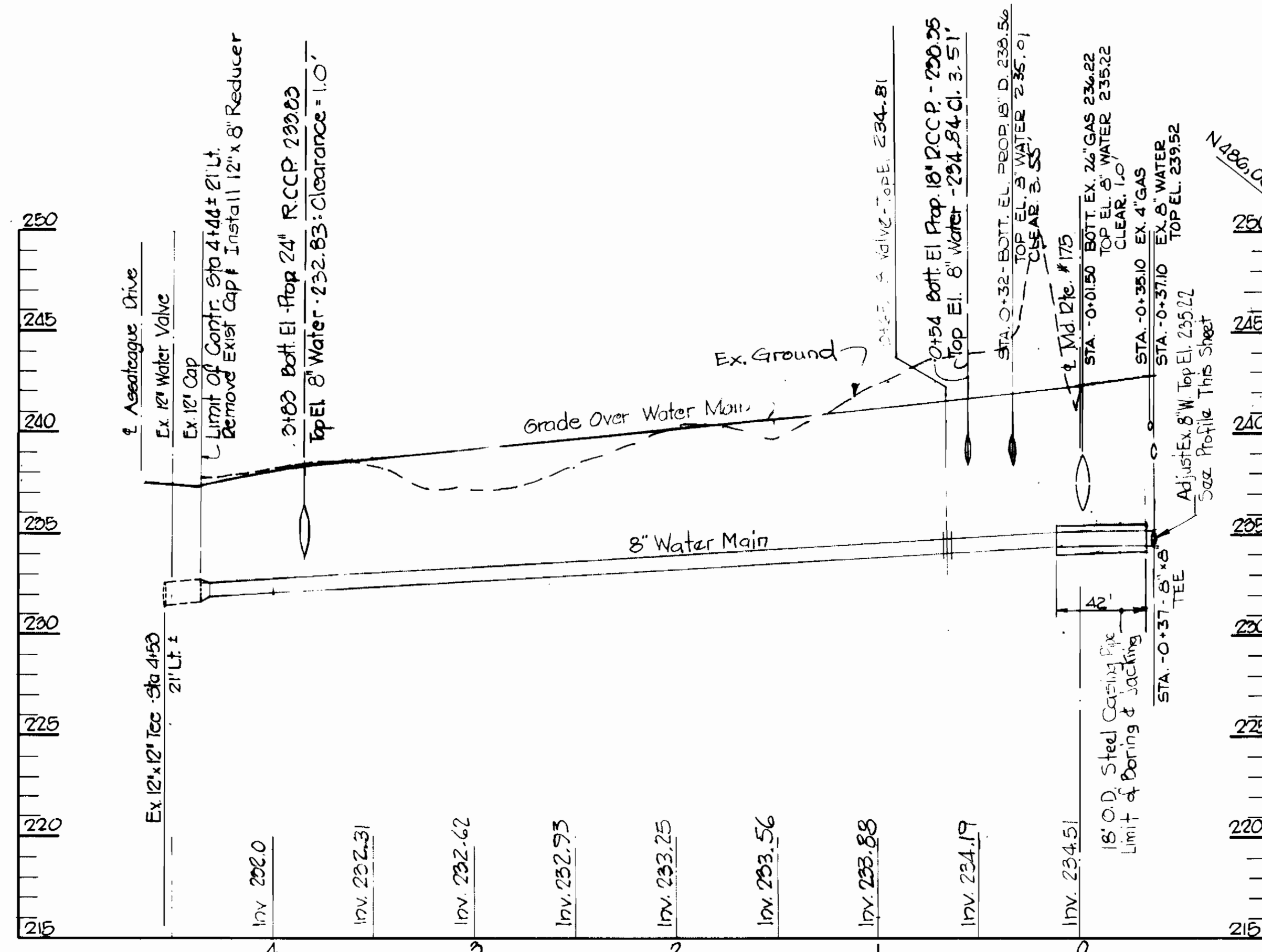
Reference Drawing:  
Storm Drain Plan: Dwg # 75-2004 Sheet 4 of 5  
Storm Drain Profile: Dwg # 75-2005 Sheet 5 of 5  
Road Plan & Profile: Dwg # 75-2004 Sheet 4 of 5



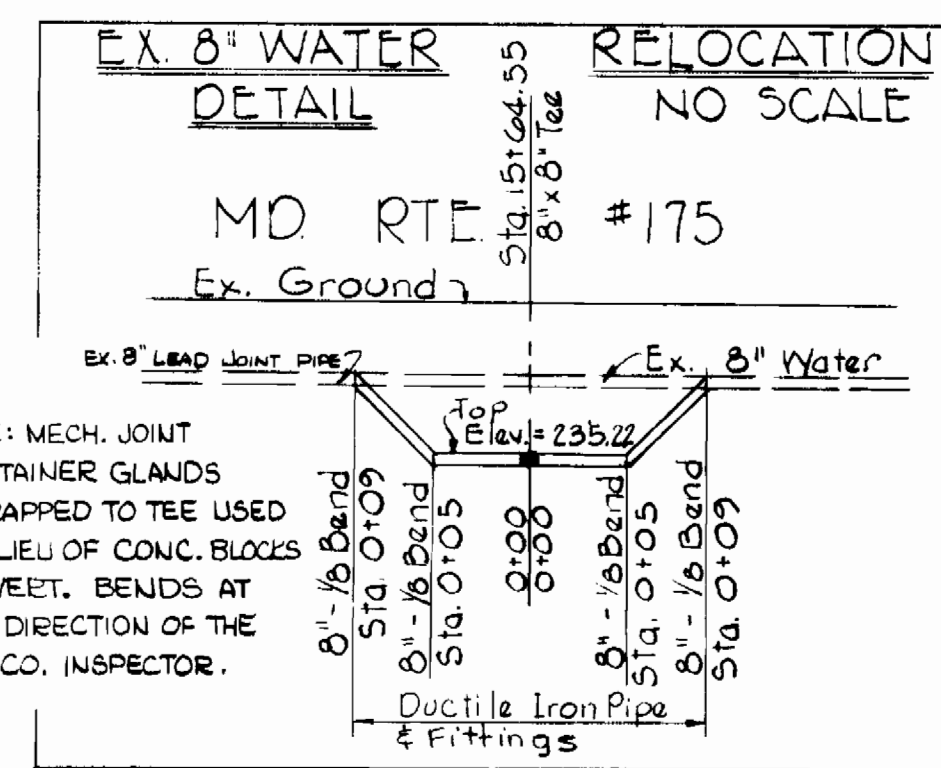
VICINITY MAP  
Scale: 1"=600'

GREATER BALTIMORE CONSOLIDATED  
WHOLESALE FOOD MARKET AUTHORITY

PLAN  
Scale: 1"=50'



PROFILE  
Scale: Horiz: 1"=50'  
Vert: 1"=5'



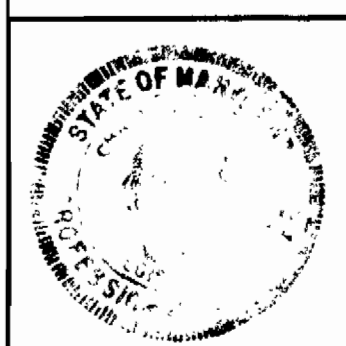
8" Steel Casing Pipe 1/4" Wall Thickness AWWA Std. C202-64  
Annual Space At Each End Of Casing SEALED WITH COMMON BRICK AND MORTAR.

CREOSOTED WHITE OAK TIMBER SKIDS EQUALLY SPACED ALONG LENGTH OF PIPE.

TYPICAL SECTION-STEEL LINER  
NO SCALE

GENERAL NOTES

1. Approximate Locations Of Existing Water Mains, Storm Drains, Sewers, and Gas Lines are Shown. The Contractor Shall Take All Precautions to Protect Existing Utilities and Services and Maintain Uninterrupted Supply. Any Damage Incurred Shall Be Repaired Immediately.
2. All Horizontal Controls Are Based On Maryland State Coordinates.
3. All Pipe Elevations Shown Are Invert Elev. Unless Otherwise Noted.
4. All Vertical Controls Are Based On U.S.G.S Datum.
5. Contractor Shall Locate Existing Utilities In Advance Of Construction Operations In Vicinity Of Proposed Utilities.
6. Contractor Shall Notify The Following Utilities Or Agencies At Least Five (5) Days Before Starting Work On These Plans:
  - State Highway Administration - 551-5555
  - Baltimore Gas and Electric Company - Underground Electric Distribution Engineering - "Damage Control" - 224-5021
  - Baltimore Gas and Electric Company - Underground Gas Distribution Engineering - 552-0100
  - Chesapeake and Potomac Telephone Company - 725-9776
7. All Water Mains To Be D.I.P. Unless Otherwise Noted.
8. Top of All Water Main To Have A Minimum of 3.5' Cover Unless Otherwise Noted.
9. Block All Fittings With Concrete.
10. All Work To Be Done Is In Strict Accordance With Howard County, Maryland Department Of Public Works General Specifications And Details For Water Mains And Sanitary Sewers.
11. All Work In Md. Rte. 175 Shall be Accomplished In Strict Accordance with S.H.A. Permit No. A-HO-6989-76.
12. 24 Hours Prior To Starting Any Work In The Area, The Contractor Shall Notify The Howard County Bureau Of Utilities Tel. 465-5000 Ext. 277.
13. The Operation Of Valves Will Be Done By The Howard County Bureau Of Utilities.
14. Contractor to Schedule Work to Minimize Shut Down Time Of Existing Main in Rte. 175.



*Charles E. Fieb*  
Reg No 5046 Date 6/16/76

GEORGE W. STEPHENS, JR. & ASSOC. INC.  
CONSULTING ENGINEERS  
303 ALLEGHENY AVE TOWSON, MD. 21204

DEPARTMENT OF PUBLIC WORKS  
HOWARD COUNTY, MARYLAND  
8-17-76  
DIRECTOR OF PUBLIC WORKS DATE

CONTRACT NO. 692-D-W

PLAN & PROFILE  
OF  
WATER MAIN

POCOMOKE AVENUE  
HOWARD COUNTY, MD. ELECTION DIST. #1 SEPT. 1975

DRAWING NO.  
75-2000  
SHEET 1 OF 1

SCALE  
As Shown

DESIGNED: J.H.N.  
DRAWN: S.P.Z.  
CHECKED: J.H.N.

REVISED: "AS BUILT" 5/25/77