

**BENCH MARKS**

W.R. & A. B.M. #8  
R.R. Spike In Power Pole # 234744, 180' South From Patuxent Range Drive On Washington Blvd.

W.R. & A. B.M. #8-A  
80 Penny Nail In 36" Oak, 345' West From Stayton Drive On Patuxent Range Drive.

- GENERAL NOTES**
- APPROXIMATE LOCATIONS OF EXISTING MAINS ARE SHOWN. THE CONTRACTOR SHALL TAKE ALL NECESSARY PRECAUTIONS TO PROTECT EXISTING MAINS AND SERVICES AND MAINTAIN UNINTERRUPTED SUPPLY. ANY DAMAGE INCURRED SHALL BE REPAIRED IMMEDIATELY.
  - THE CONTRACTOR SHALL LOCATE EXISTING UTILITIES A MINIMUM OF TWO WEEKS IN ADVANCE OF CONSTRUCTION OPERATIONS IN VICINITY OF UTILITIES.
  - ALL WATER MAINS TO BE D.I.P. EXCEPT AS NOTED ON THE DRAWINGS & TO HAVE 3.5' MIN. COVER.
  - ALL VALVES TO BE STRAPPED TO TEES IN ACCORDANCE WITH STANDARD DETAILS.
  - BLOCK ALL FITTINGS WITH CONCRETE. (SEE STANDARDS BOUND IN SPECIFICATIONS)
  - FOR ALL STANDARD DETAILS, SEE STANDARDS BOUND IN SPECIFICATIONS.
  - ALL HORIZONTAL CONTROLS BASED ON MARYLAND STATE DATUM. ALL VERTICAL CONTROLS BASED ON U.S.G.S. SYSTEM.
- 12" CLASS 2 TRENCHES 0.37  
CLASS TRENCHES
- 12" W - 1681 LF  
6" W - 74 LF  
F.H. - 4
- All 6" & 12" Water Pipes - DIP - GRIFFIN

STATE OF MARYLAND

CHARLES C. FICKS 3/12/76  
Reg. No. 5048 Date

GEORGE W. STEPHENS JR. & ASSOC. CONSULTING ENGINEERS  
303 ALLEGHENY AVE. TOWSON, MD. 21204

HOWARD COUNTY DEPARTMENT OF PUBLIC WORKS  
Director of Public Works DATE CHIEF, BUREAU OF ENGINEERING DATE

CONTRACT NO. 690-D-W

PLAN & PROFILE WATER MAINS

BALTIMORE WASHINGTON INDUSTRIAL PARK STAYTON DRIVE  
HOWARD CO., MD. ELECTION DIST # 6

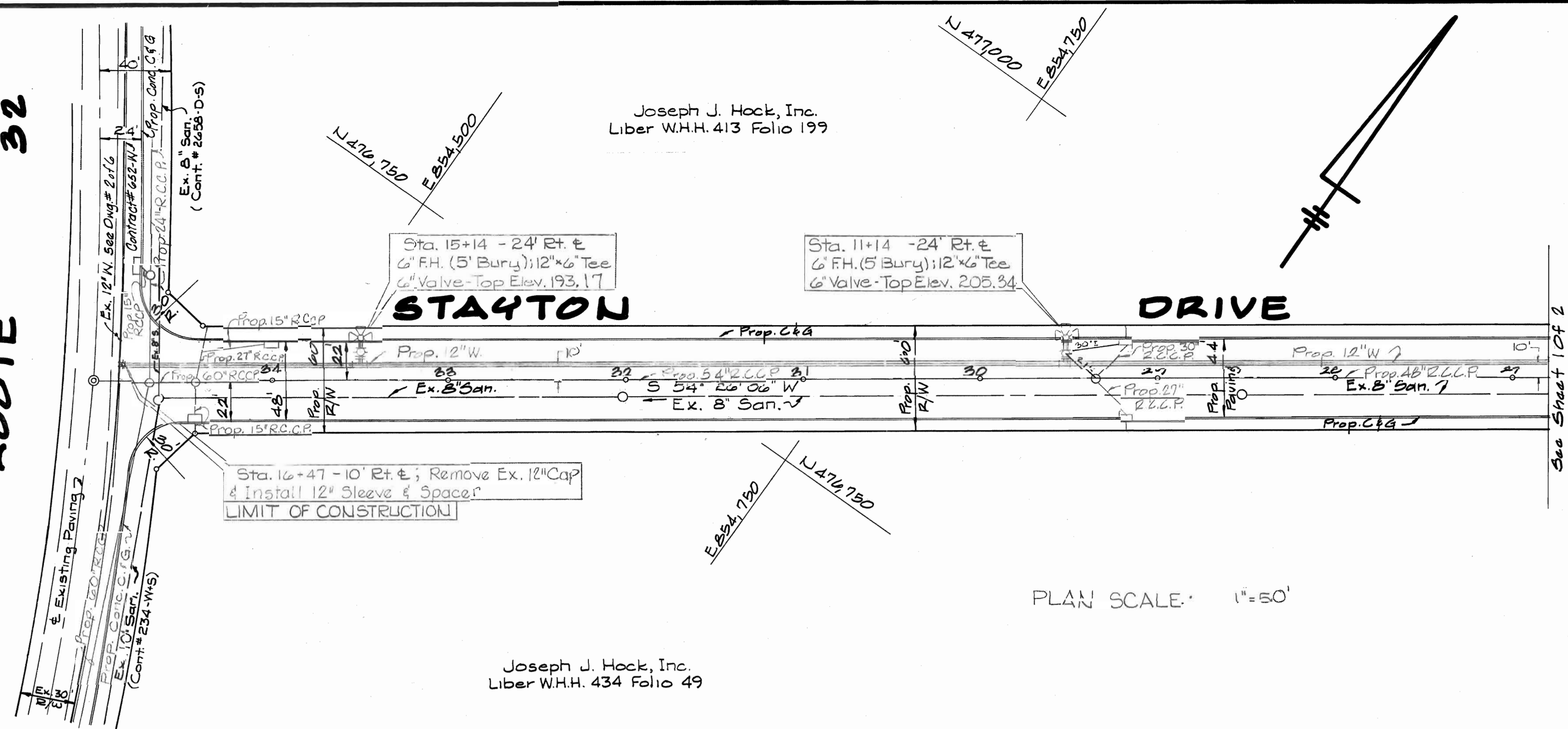
DRAWING NO. 1 OF 2  
Rev. 10/22/76  
DES. R.A.P.  
D.W. G.R.G.  
CHK. H.F.B.

12-22-76 Add. 12"x8", 6", 4", 36" of 8" W (W/C) Stayton Dr.  
Add 8"x6" San. Saver, 20' of 6" S (S/C) Stayton Dr.  
No. Date Revision

MAY 30 1976



MD. ROUTE 32

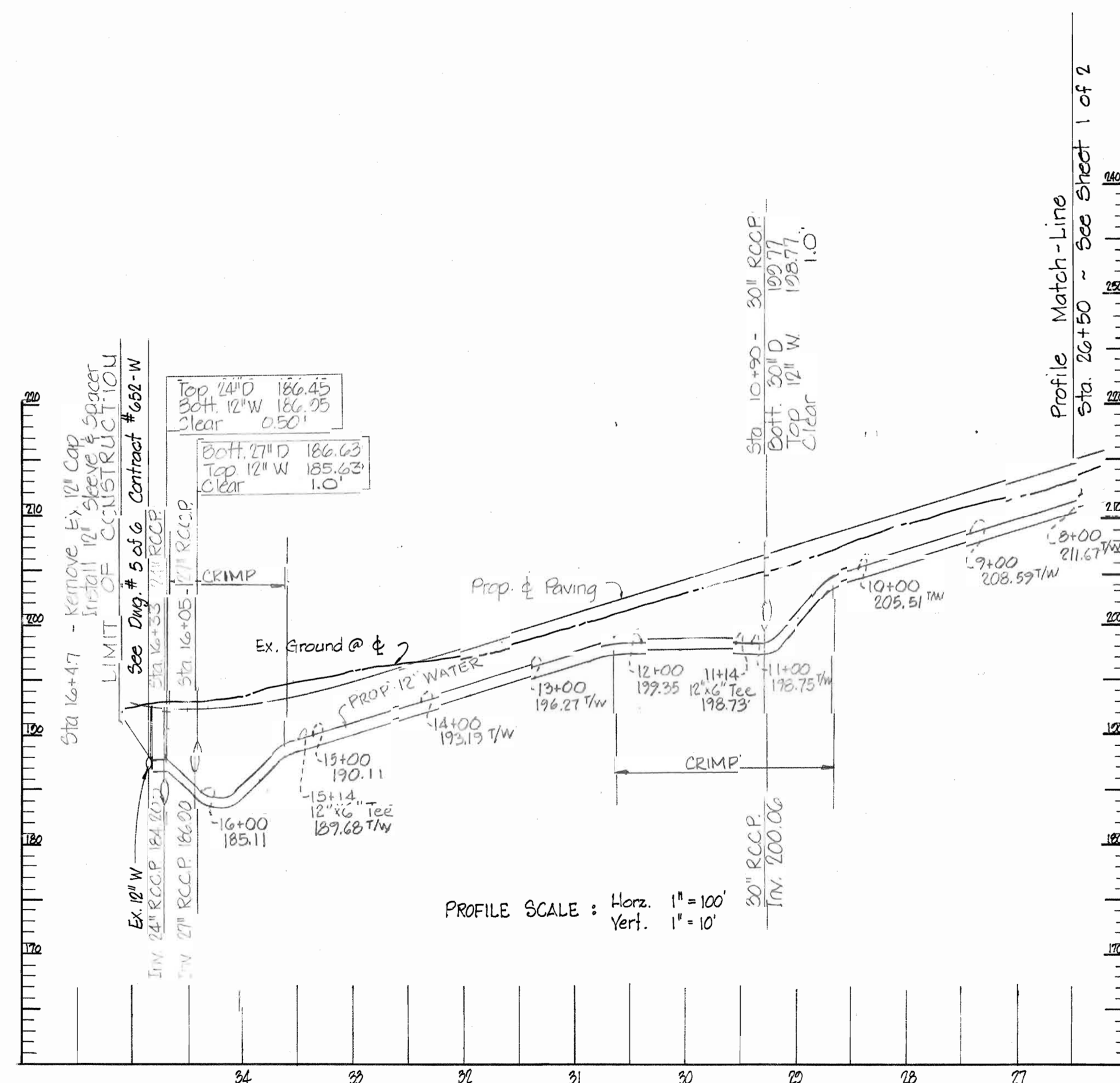


Joseph J. Hock, Inc.  
Liber W.H.H. 413 Folio 199

Joseph J. Hock, Inc.  
Liber W.H.H. 434 Folio 49

PLAN SCALE: 1"=50'

BILL OF MATERIALS		
NO.	DESCRIPTION	SIZE
1685	DUCTILE IRON WATER MAIN	12"
76	DUCTILE IRON WATER MAIN	6"
2	VALVE	12"
4	VALVE	6"
3	FIBRE HYDRANT (5.0' BURY)	6"
4	TEE	12"x6"
1	TEE	12"x12"
2	SLEEVE & SPACER	12"
1	CAP	12"
1	BLOW	1 1/2"
1	AUTO. AIR RELEASE VALVE	
1	M.H. INSTALLATION COMPLETE	
1	FIRE HYDRANT (6.0' BURY)	6"



PROFILE SCALE: Horiz. 1"=100'  
Vert. 1"=10'



*Charles L. Fiel* 3/12/76  
Req. No. 5048 Date

GEORGE W. STEPHENS JR. & ASSOC.  
CONSULTING ENGINEERS  
303 ALLEGHENY AVE. TOWSON, MD. 21204

HOWARD COUNTY DEPARTMENT OF PUBLIC WORKS  
9-3-76  
DATE  
W. O. Falbert 9-3-76  
CHIEF BUREAU OF ENGINEERING DATE

CONTRACT NO. 690-D-W

PLAN & PROFILE  
WATER MAINS

BALTIMORE WASHINGTON  
INDUSTRIAL PARK  
STAYTON DRIVE  
HOWARD CO., MD. ELECTION DIST. #6  
MAY 30, 1976

DRAWING  
NO. 2  
NO. 2

Rev 10/22/76

DE & R.A.P.  
DEW & R.A.  
CHK. H.F.B.