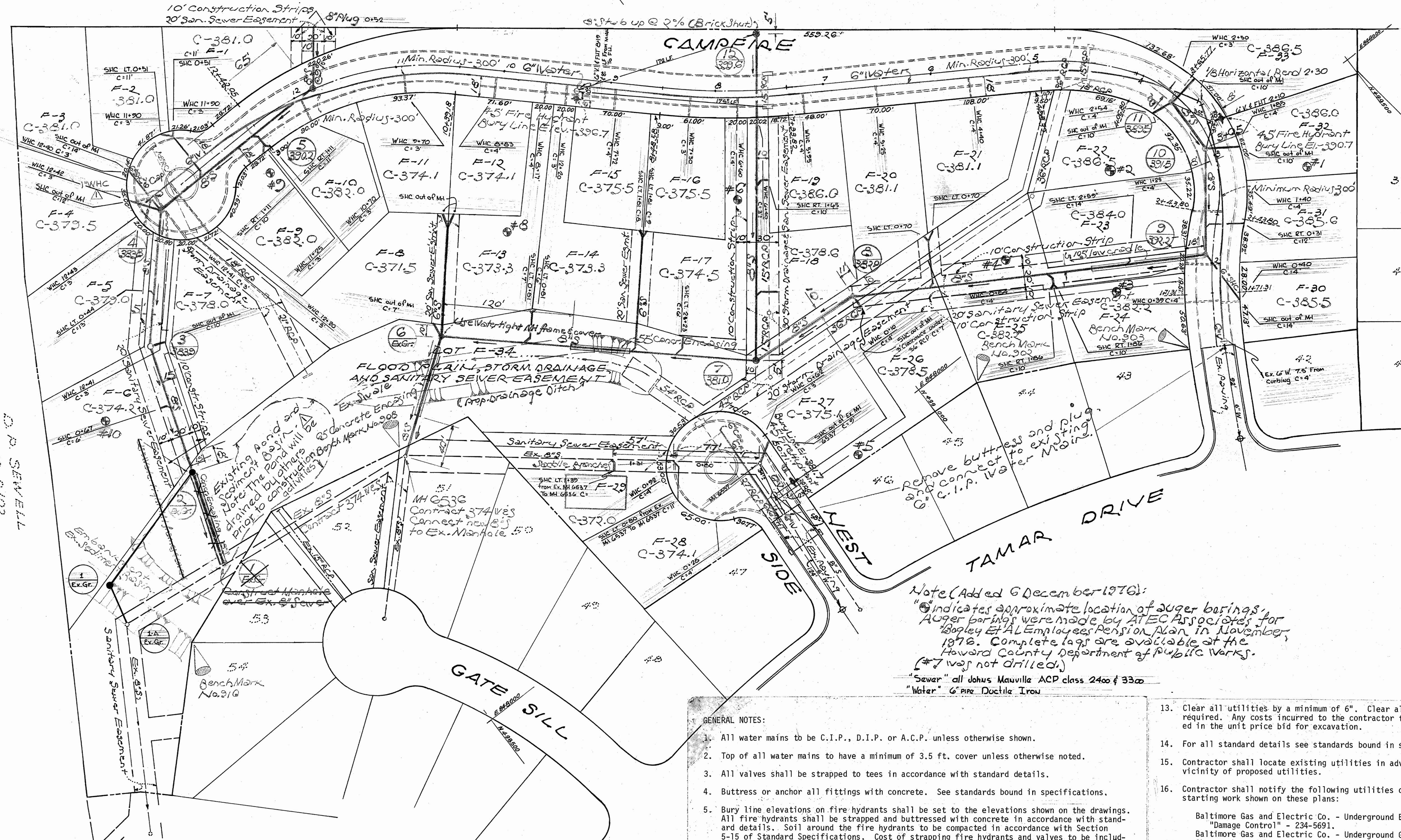
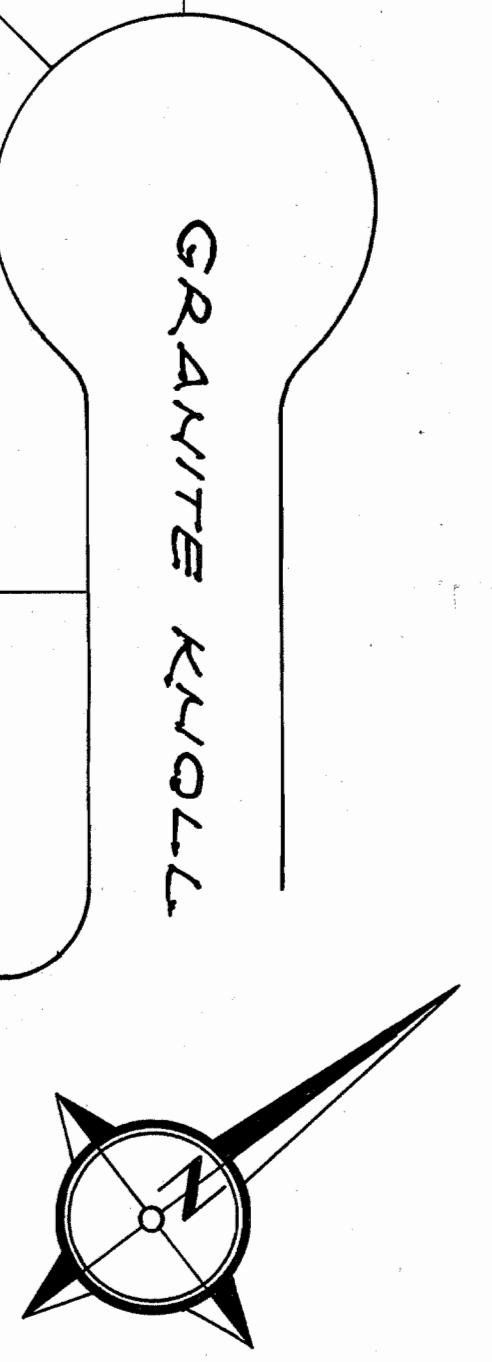
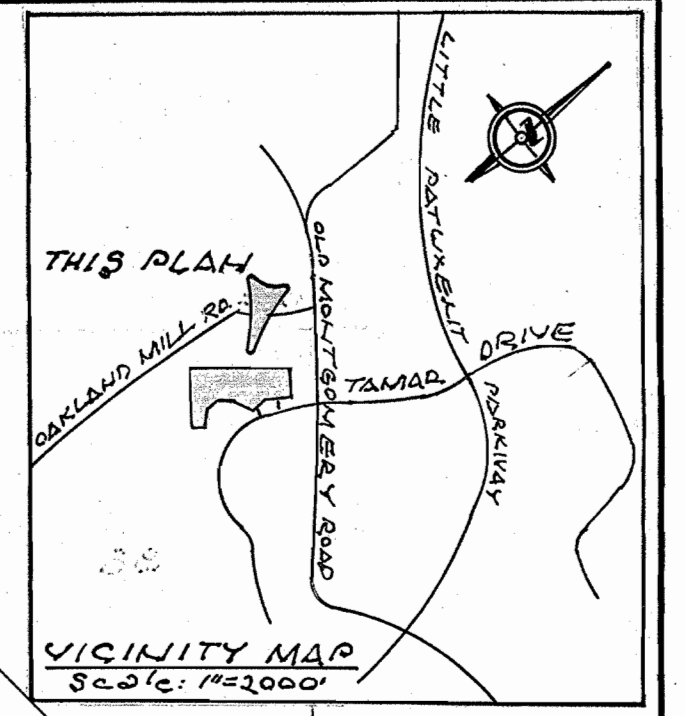


No.	Date	Revision
1	4-20-77	Add Note of 1" W.C. - Rev. Note of Pond Drainage

S.E. ECKER
L222 P 576



Note (Added 6 December 1976):
 *Indicates approximate location of auger borings. Auger borings were made by ATEC Associates for Boyley & AL Employees Pension Plan in November, 1976. Complete logs are available at the Howard County Department of Public Works. (#7 was not drilled.)
 "Sewer" all Johns Manville ACP class 2400 & 3300
 "Water" 6" Pipe Ductile Iron

GENERAL NOTES:

- All water mains to be C.I.P., D.I.P. or A.C.P. unless otherwise shown.
- Top of all water mains to have a minimum of 3.5 ft. cover unless otherwise noted.
- All valves shall be strapped to tees in accordance with standard details.
- Buttress or anchor all fittings with concrete. See standards bound in specifications.
- Bury line elevations on fire hydrants shall be set to the elevations shown on the drawings. All fire hydrants shall be strapped and buttressed with concrete in accordance with standard details. Soil around the fire hydrants to be compacted in accordance with Section 5-15 of Standard Specifications. Cost of strapping fire hydrants and valves to be included in the unit price bid for furnishing and installing fire hydrants.
- All sewer mains shall be C.S.P.X., V.C.P.X., or A.C.P. Class 2400 unless otherwise noted.
- The contractor shall provide a joint in all sewer mains within 2'-00" of exterior manhole wall.
- All manholes shall be 4'-00" inside diameter, unless otherwise noted.
- Approximate locations of existing mains are shown. The contractor shall take all necessary precautions to protect existing mains and services and maintain uninterrupted service. Any damage incurred due to the contractor's operation shall be repaired immediately at the contractor's expense.
- All horizontal controls are based on Maryland State Coordinates.
- All vertical controls are based on U.S.G.S. Datum.
- All pipe elevations shown are invert elevations.

- Clear all utilities by a minimum of 6". Clear all poles by 2'-00" minimum or tunnel as required. Any costs incurred to the contractor for tunneling and bracing shall be included in the unit price bid for excavation.
- For all standard details see standards bound in specifications.
- Contractor shall locate existing utilities in advance of construction operations in the vicinity of proposed utilities.
- Contractor shall notify the following utilities or agencies at least five (5) days before starting work shown on these plans:
 Baltimore Gas and Electric Co. - Underground Electric Distribution Engineering + "Damage Control" - 234-5691.
 Baltimore Gas and Electric Co. - Underground Gas Distribution Engineering - 559-0100.
 Chesapeake and Potomac Telephone Co. - 725-9976.
 American Telephone and Telegraph - Cable Location Division - (301) 393-3553.
- Contractor shall remove trees, stumps, and roots along line of excavation as directed by the Engineer. Payment for such removal shall be included in the unit price bid for excavation and backfill for water and sewer mains.
- Place regulation "Men Working" and warning signs as required to comply with Maryland State Highway Administration Manual of Traffic Control for Highway Construction and Maintenance Operations.

BENCH MARKS:
 No. 302 - Top of Iron Pipe at intersection of Lots 44, 45, F-25 & F-26. Elevation - 382.47
 No. 303 - Top of Iron Pipe at intersection of Lots 43, F-24, and Campfire. Elevation - 381.93
 No. 308 - Top of Iron Pipe at intersection of Lots 51, 52, & F-34. Elevation - 372.29
 No. 310 - Top of Iron Pipe at intersection of Lots 53, 54, & F-34. Elevation - 371.20.

ITEM	LENGTH or NO.
8" Sewer	1873 linear feet
Manholes	12
6" Water	1345 linear feet
Fire Hydrants	3

JOHN J. ALLEN ASSOCIATES
 Civil Engineers • Planners • Surveyors
 4801 Montgomery Lane
 Bethesda, Maryland 20014 (Tel. 656-9555)

DEPARTMENT OF PUBLIC WORKS
 HOWARD COUNTY, MARYLAND
 P. J. Regan, Jr. 10-8-76
 DIRECTOR OF PUBLIC WORKS - DATE

CONTRACT NO. C-106890-1165
 W. O. Pickett 10-8-76
 CHIEF BUREAU OF ENGINEERING - DATE

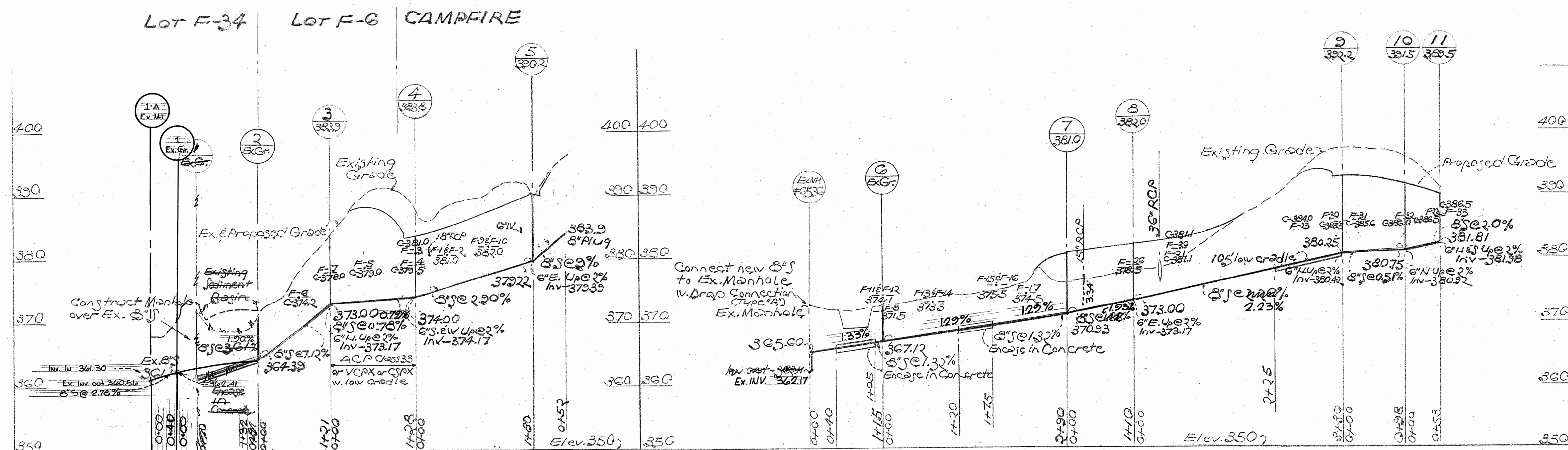
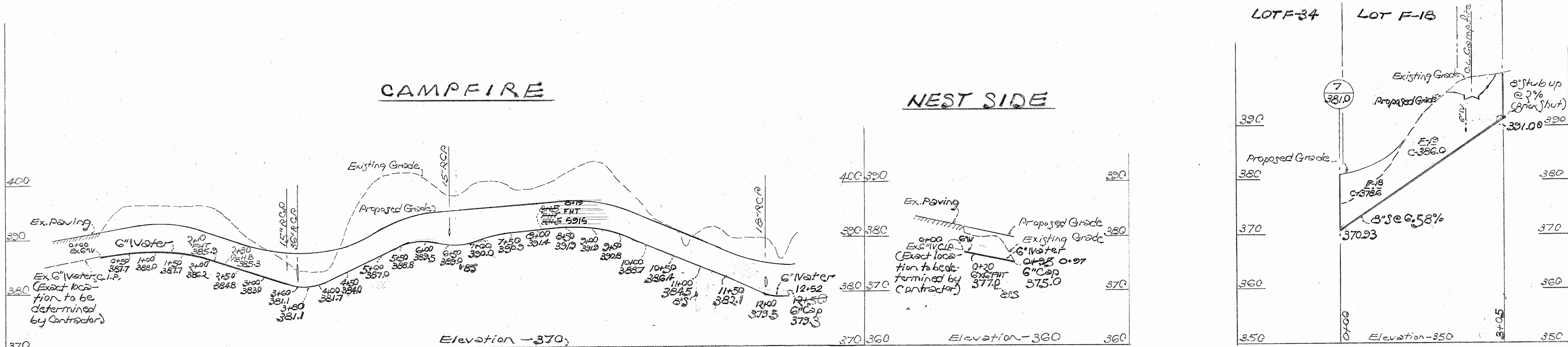
WATER & SEWER
 EXTENSIONS

VILLAGE OF LONGREACH • SECTION 1 - AREA 2
 COLUMBIA
 LOTS F-1 TO F-34
 ELECTION DISTRICT NO. 8 - GUILFORD

DRAWING NO. 1 OF 2
 SCALE 1" = 50'

PROFILES

Scale: hor. - 1" = 100'
vert. - 1" = 10'



VILLAGE OF LONGREACH
SECTION I-AREA 2-PARCELS
C-2689-D-IV-2'S

JOHN J. ALLEN ASSOCIATES Civil Engineers • Planners • Surveyors 4801 Montgomery Lane Bethesda, Maryland 20014 Tel. 256-2550	DEPARTMENT OF PUBLIC WORKS HOWARD COUNTY, MARYLAND P.J. Pagan 10-8-76 DIRECTOR OF PUBLIC WORKS - DATE	W.C. Felbert 10-8-76 CHIEF BUREAU OF ENGINEERING - DATE	CONTRACT NO. C-2689-D-IV-2'S WATER & SEWER EXTENSIONS	VILLAGE OF LONGREACH-SECTION I-AREA 2 COLUMBIA LOTS F-1 TO F-34 ELECTION DISTRICT NO. 6 - GUILFORD	DRAWING NO. 2 OF 2	SCALE As noted
---	--	--	---	---	--------------------------	-------------------

As-Built 11-21-77

WS 689-W&S/2