

VICINITY MAP

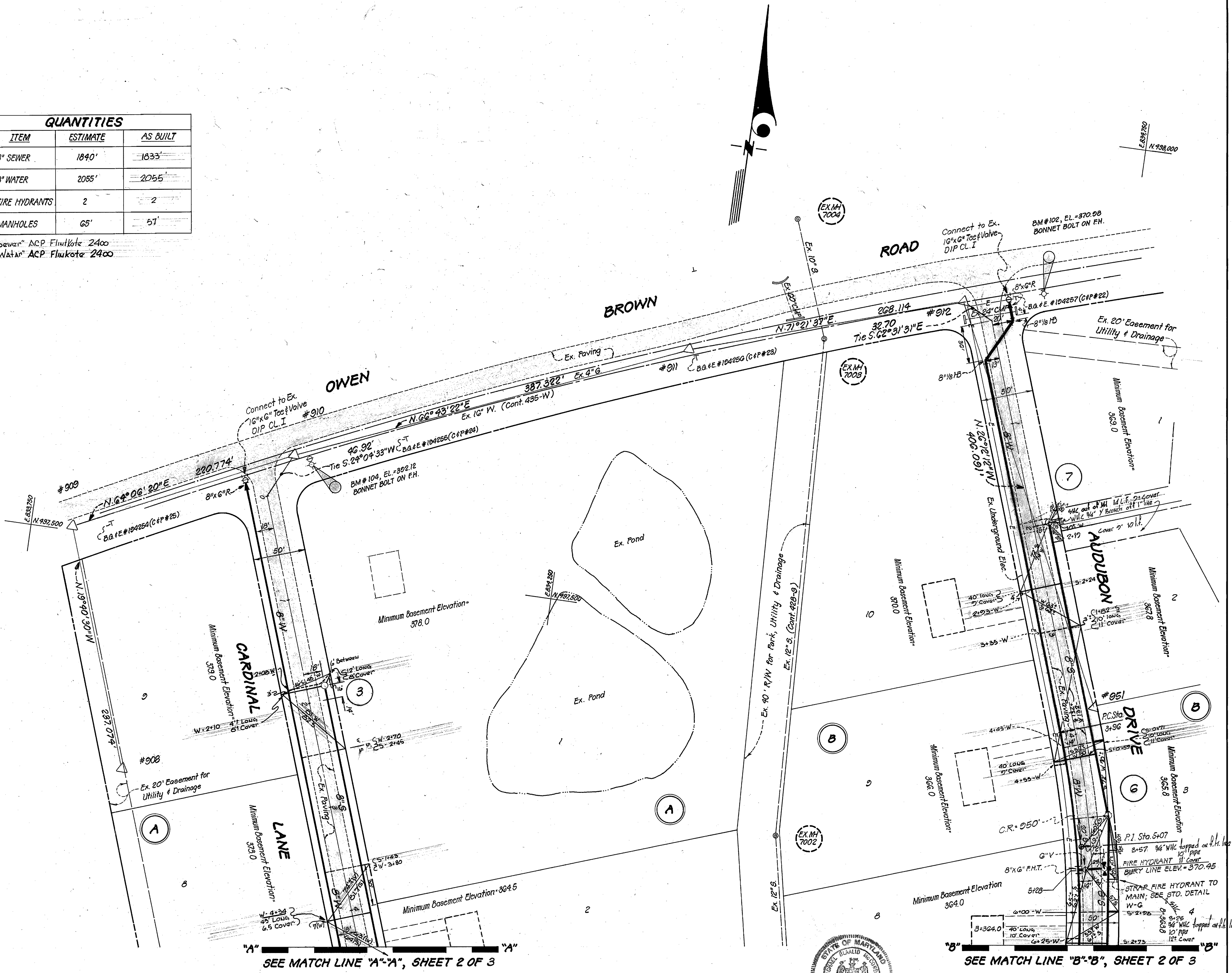
SCALE: 1" = 2000'

GENERAL NOTES

- All water mains to be C.I.P., D.I.P or A.C.P. unless otherwise shown.
- Top of all water mains to have a minimum of 3.5 ft. cover unless otherwise noted.
- All valves shall be strapped to tees in accordance with standard details.
- Buttress or anchor all fittings with concrete. See standards bound in specifications.
- Bury line elevations on fire hydrants shall be set to the elevations shown on the drawings. All fire hydrants shall be strapped and buttressed with concrete in accordance with standard details. Soil around the fire hydrants to be compacted in accordance with Section 5-15 of the Standard Specifications. Cost of strapping fire hydrants and valves to be included in the unit price bid for furnishing and installing fire hydrants.
- All sewer mains shall be C.S.P.X., V.C.P.X., or A.C.P. Class 2400 unless otherwise noted.
- The contractor shall provide a joint in all sewer mains within 2'-0" of exterior manhole wall.
- All manholes shall be 4'-0" inside diameter, unless otherwise noted.
- Approximate locations of existing mains are shown. The contractor shall take all necessary precautions to protect existing mains and services and maintain uninterrupted service. Any damage incurred due to the contractors operation shall be repaired immediately at the contractors expense.
- All horizontal controls are based on Maryland State Coordinates.
- All vertical controls are based on U.S.G.S. Datum.
- All pipe elevations shown are invert (I) elevations.
- Clear all utilities by a minimum of 6". Clear all poles by 2'-0" minimum or tunnel as required. Any costs incurred to the contractor for tunneling and bracing poles shall be included in the unit price bid for excavation.
- For all standard details see standards bound in specifications.
- Contractor shall locate existing utilities in advance of construction operations in the vicinity of proposed utilities.
- Contractor shall notify the following utilities or agencies at least five (5) days before starting work shown on these plans:
 Baltimore Gas and Electric Co. - Underground Electric Distribution Engineering - "Damage Control" - 234-5001
 Baltimore Gas and Electric Co. - Underground Gas Distribution Engineering - 559-0100
 Chesapeake and Potomac Telephone Co. - 725-3976
 American Telephone and Telegraph - Cable Location Division - 301-393-3553.
- Contractor shall remove trees, stumps and roots along line of excavation as directed by the Engineer. Payment for such removal shall be included in the unit price bid for excavation and backfill for water and sewer mains.
- Place regulation "Men Working" and warning signs as required to comply with Maryland State Highway Administration Manual of Traffic Control for Highway Construction and Maintenance Operations.

QUANTITIES		
ITEM	ESTIMATE	AS BUILT
8" SEWER	1840'	1633'
8" WATER	2055'	2055'
FIRE HYDRANTS	2	2
MANHOLES	65'	51'

Sewer ACP Flukote 2400
 Water ACP Flukote 2400



MB M... 4/7/76

SPRING LAKE GARDENS
 Cont. # 2686-D-W#5

JOHNSON - McCORDIC - THOMPSON, P.A.
 ENGINEERS PLANNERS SURVEYORS
 1620 ELTON ROAD SILVER SPRING, MD.
 434-7000 20903

DEPARTMENT OF PUBLIC WORKS
 HOWARD COUNTY, MARYLAND
 7-1-76 6-30-76
 DIRECTOR OF PUBLIC WORKS DATE CHIEF-BUREAU OF ENGINEERING DATE

CONTRACT NO. 2686-D-W#5

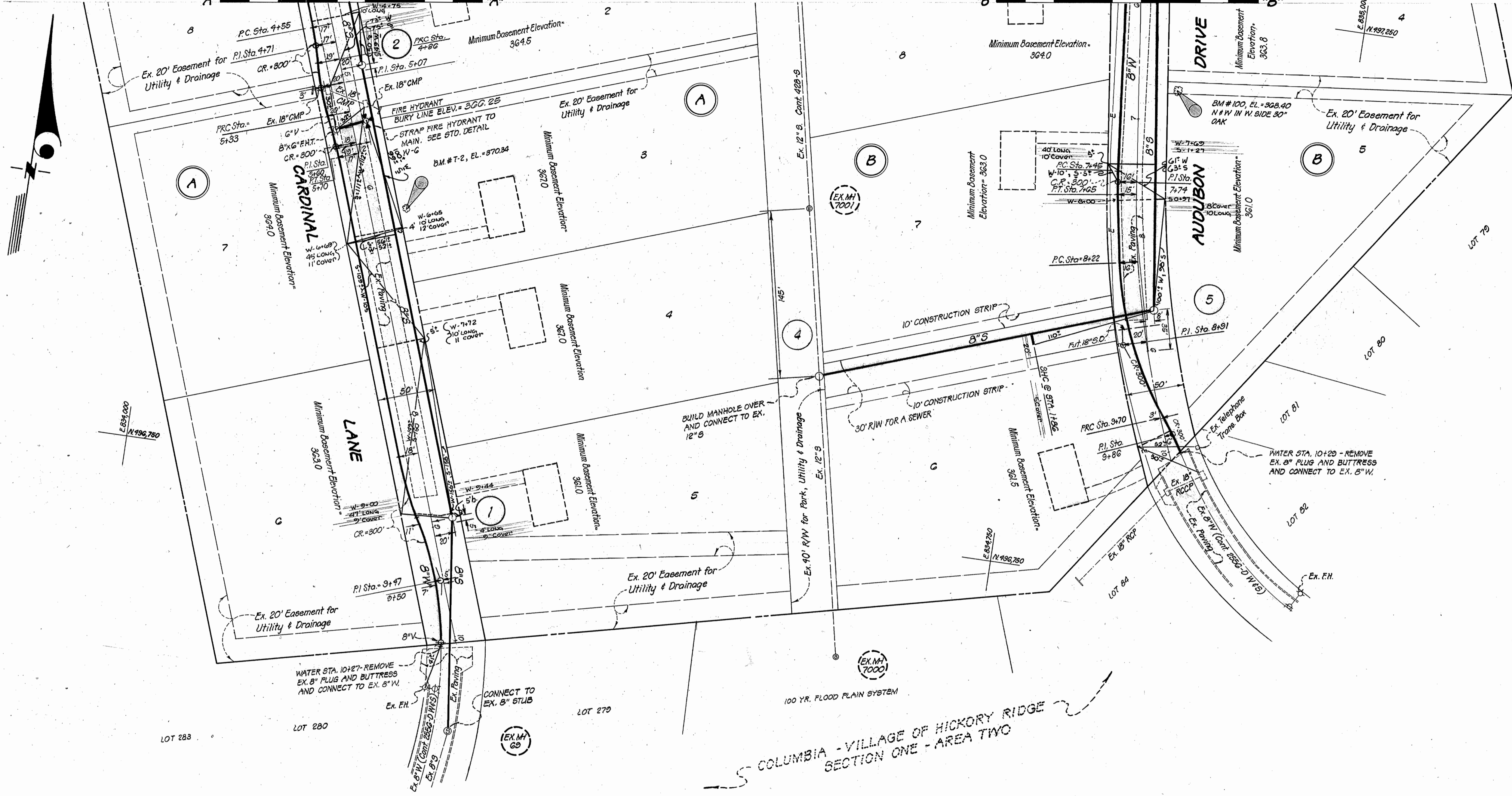
PLAN OF WATER AND SEWER MAINS

SPRING LAKE GARDENS
 ELECTION DISTRICT - CLARKSVILLE NO. 5

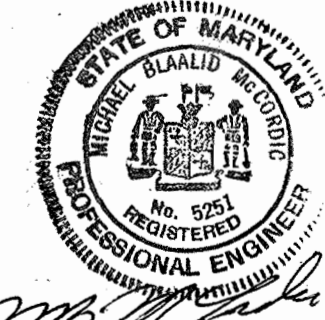
DRAWING NO. 1 OF 3 SCALE 1" = 50'

SEE MATCH LINE "A"- "A", SHEET 1 OF 3

SEE MATCH LINE "B"- "B", SHEET 1 OF 3



COLUMBIA - VILLAGE OF HICKORY RIDGE SECTION ONE - AREA TWO



SPRING LAKE GARDENS
Cont # 2686-D-W&S

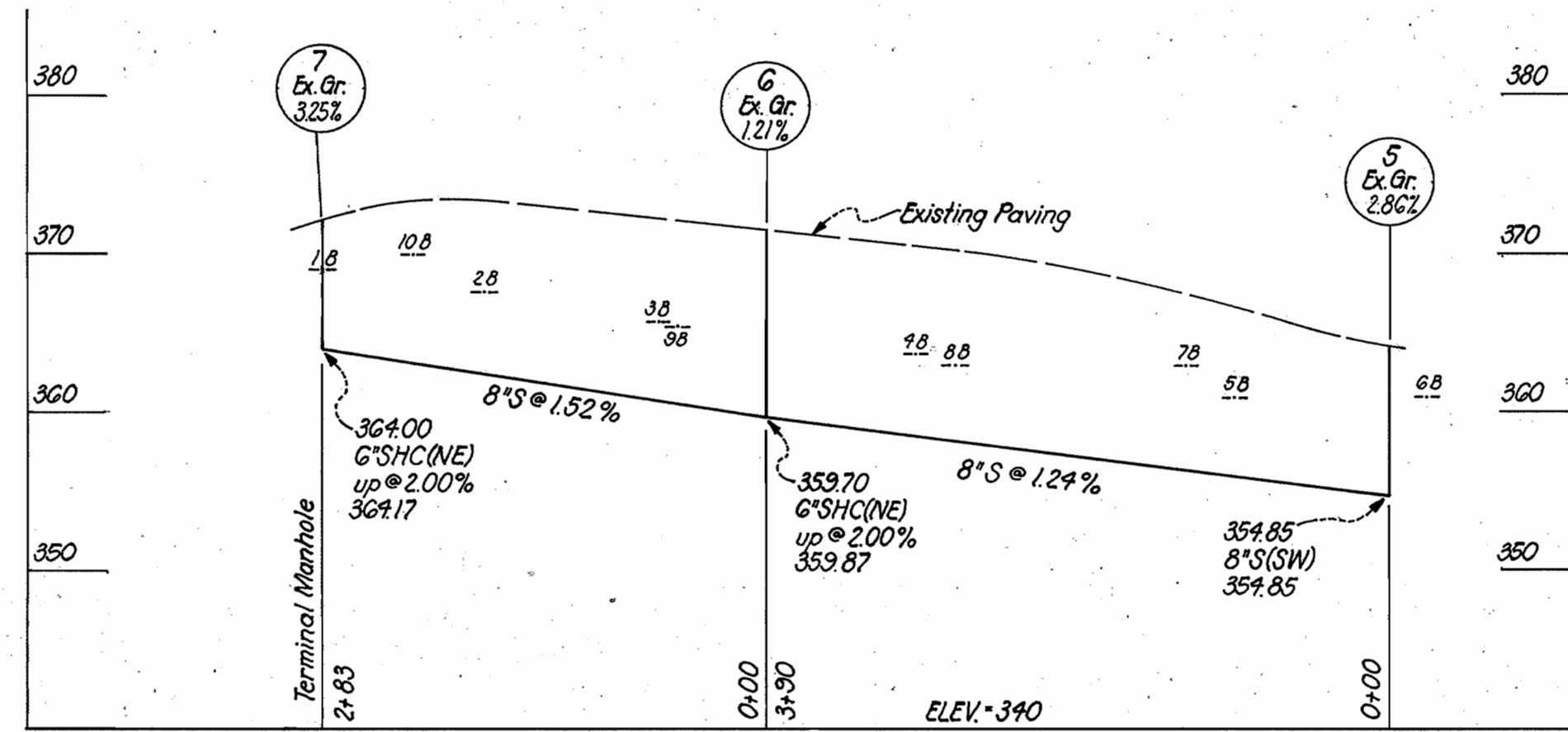
<p>JOHNSON - MCCORDIC - THOMPSON, P.A. ENGINEERS PLANNERS SURVEYORS 1620 ELTON ROAD SILVER SPRING, MD. 434-7000 20903</p>	<p>DEPARTMENT OF PUBLIC WORKS HOWARD COUNTY, MARYLAND <i>P. J. Regan</i> 7-1-76 DATE <i>W. O. Fulbert</i> 1-30-76 DATE DIRECTOR OF PUBLIC WORKS CHIEF - BUREAU OF ENGINEERING</p>	<p>CONTRACT NO. <u>2686 D-W&S</u></p>	<p>PLAN OF WATER AND SEWER MAINS</p>	<p>SPRING LAKE GARDENS ELECTION DISTRICT - CLARKVILLE NO. 5</p>	<p>DRAWING NO. <u>2</u> OF <u>3</u> SCALE 1"=50'</p>
--	---	---	--	---	--

As-Built Max 4/77

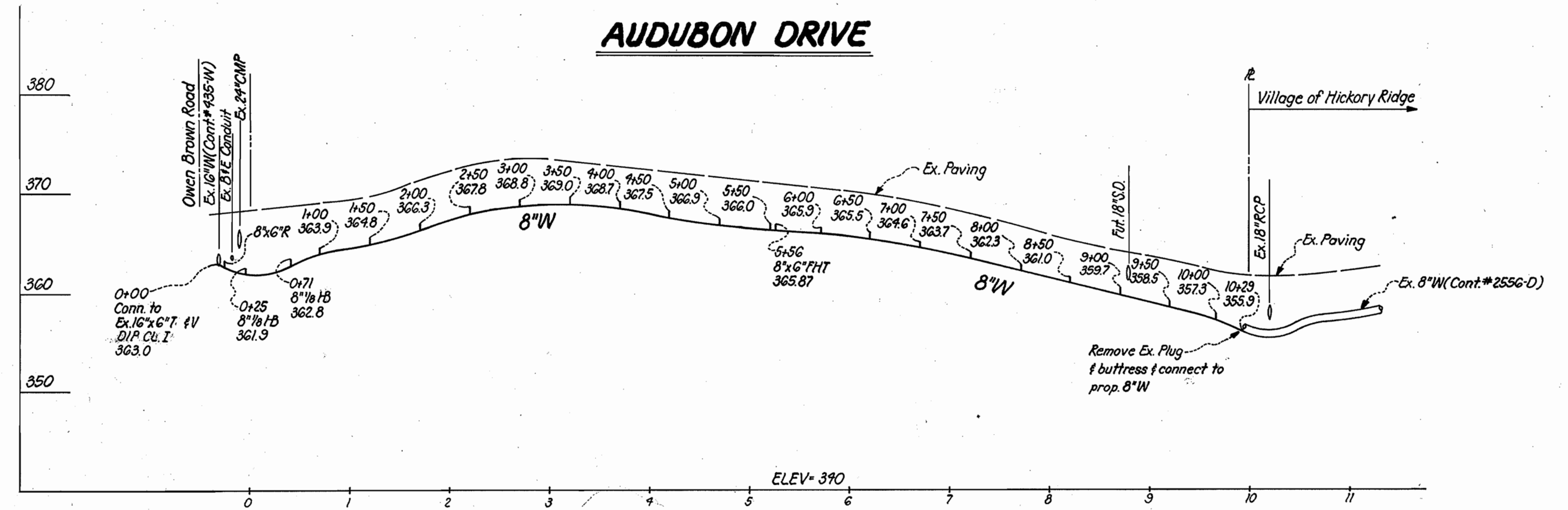
FILE NO. 4-075-96-B

WS 686-W#5/2

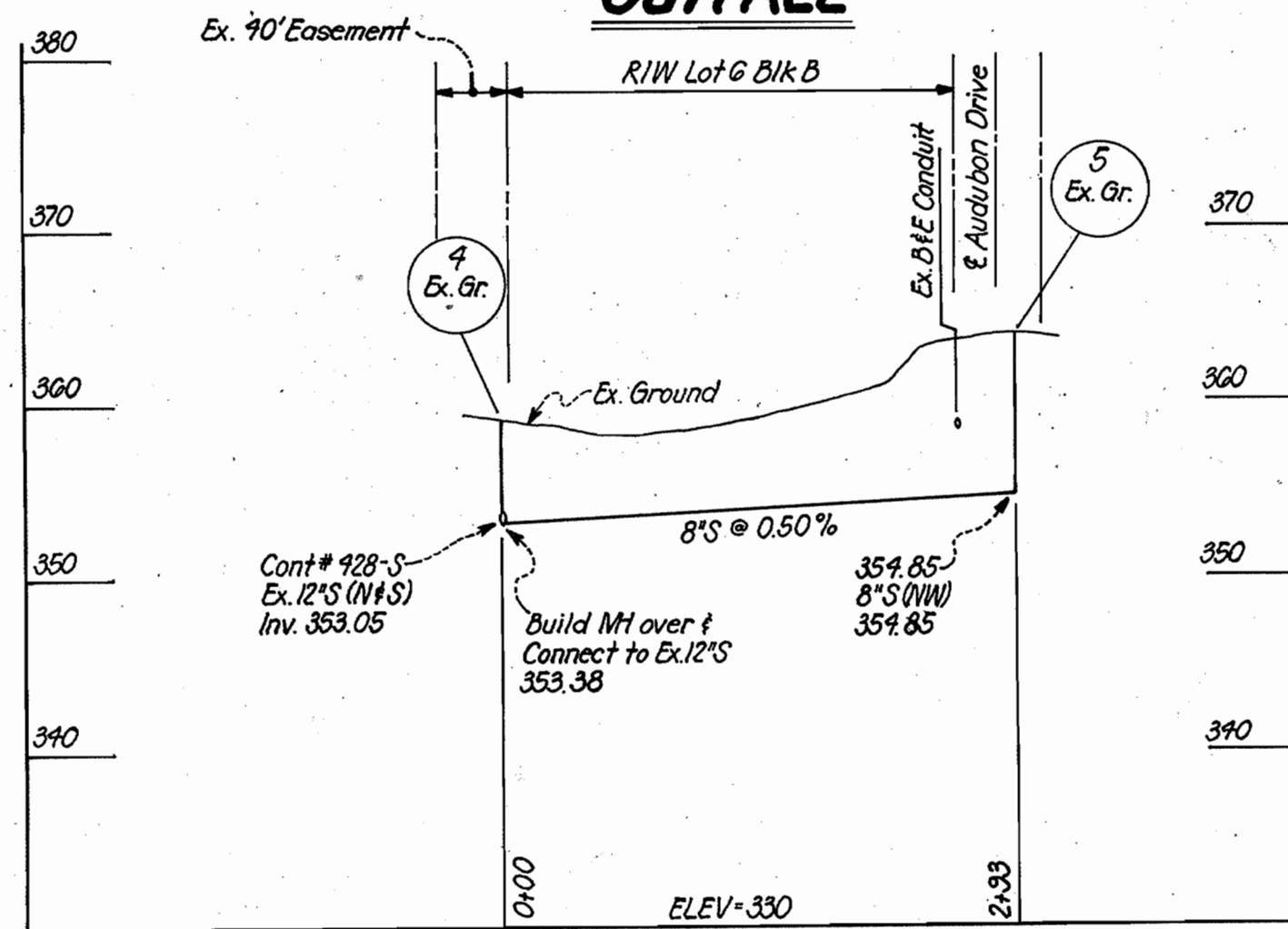
AUDUBON DRIVE



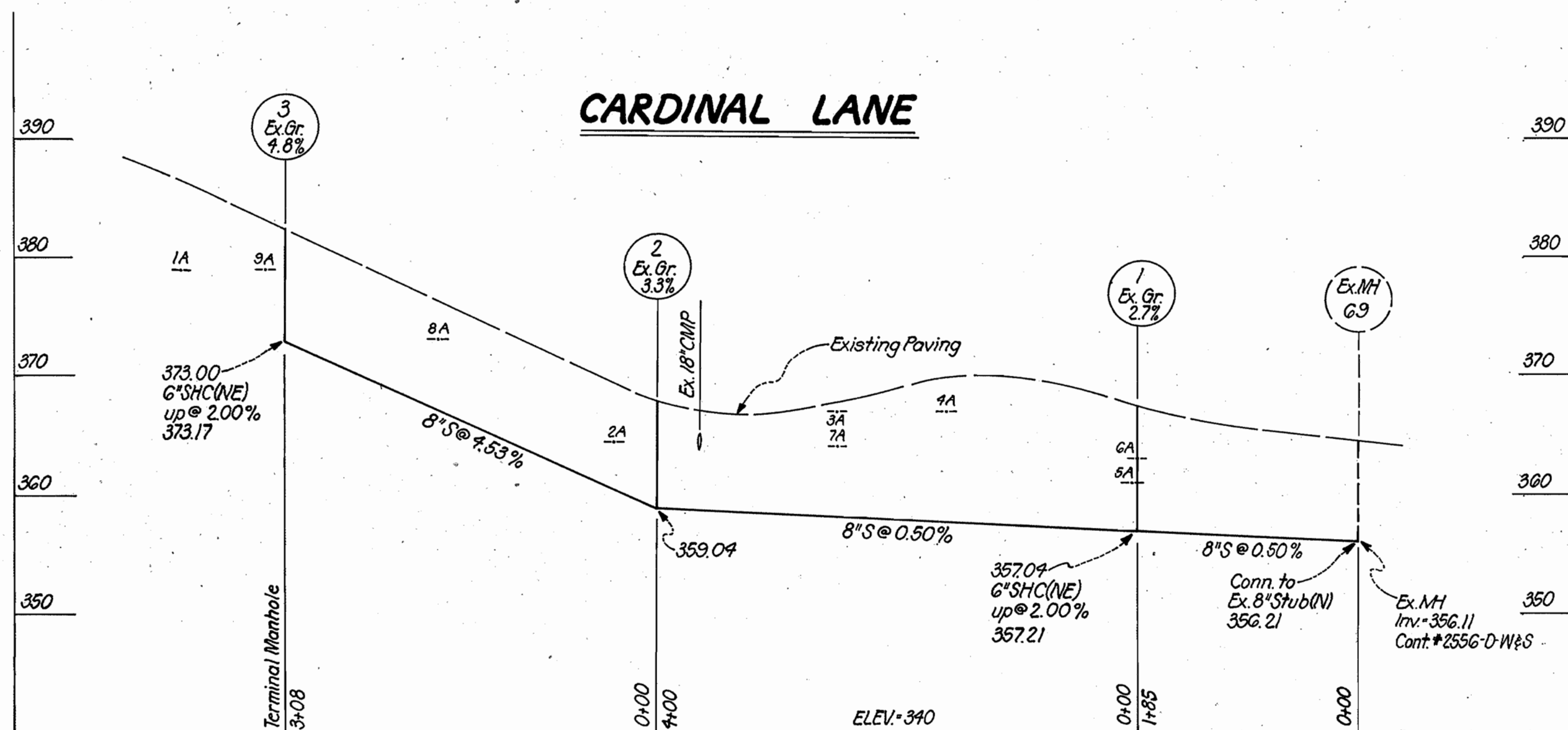
AUDUBON DRIVE



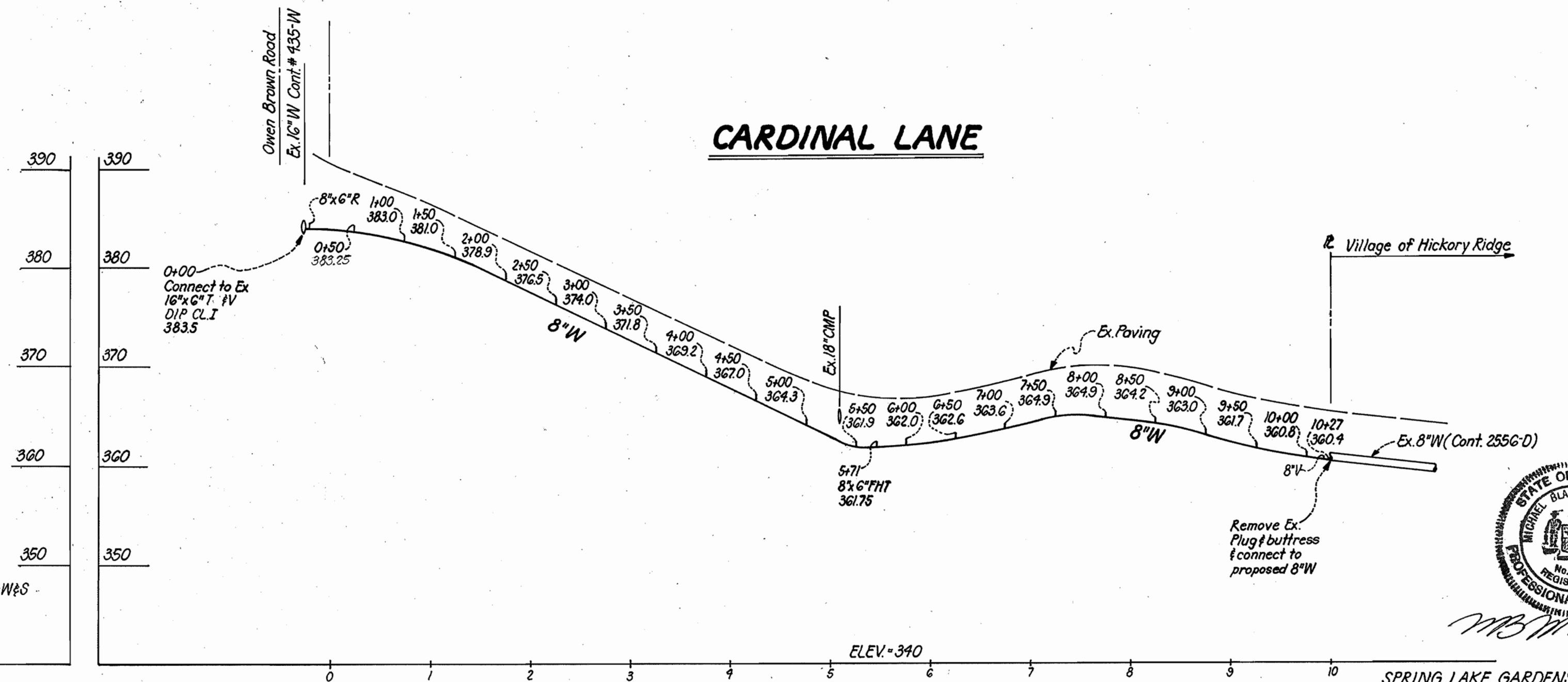
OUTFALL



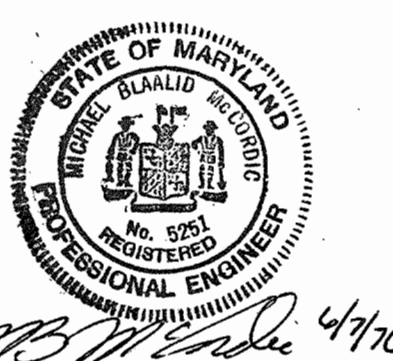
CARDINAL LANE



CARDINAL LANE



PROFILE SCALE
HORIZ. 1"=100'
VERT. 1"=10'



SPRING LAKE GARDENS
Cont. # 2686-D-WFS

JOHNSON - MCCORDIC - THOMPSON, P.A.
ENGINEERS PLANNERS SURVEYORS
1620 ELTON ROAD SILVER SPRING, MD.
434-7000 20903

DEPARTMENT OF PUBLIC WORKS
HOWARD COUNTY, MARYLAND
7-1-76 1-30-76
DIRECTOR OF PUBLIC WORKS DATE CHIEF-BUREAU OF ENGINEERING DATE

CONTRACT NO. 2686-D-WFS

PROFILES OF
WATER AND SEWER MAINS

SPRING LAKE GARDENS
ELECTION DISTRICT - CLARKSVILLE NO.5

DRAWING NO. 3 OF 3 SCALE As Shown

WS 686-W&S/3