

BENCH MARKS

B.M. #3343001 ELEV. 408.542
Howard County Monument at surface north side of Rt. 40, across from Normandy Lanes, 17.41' west of Catch Basin

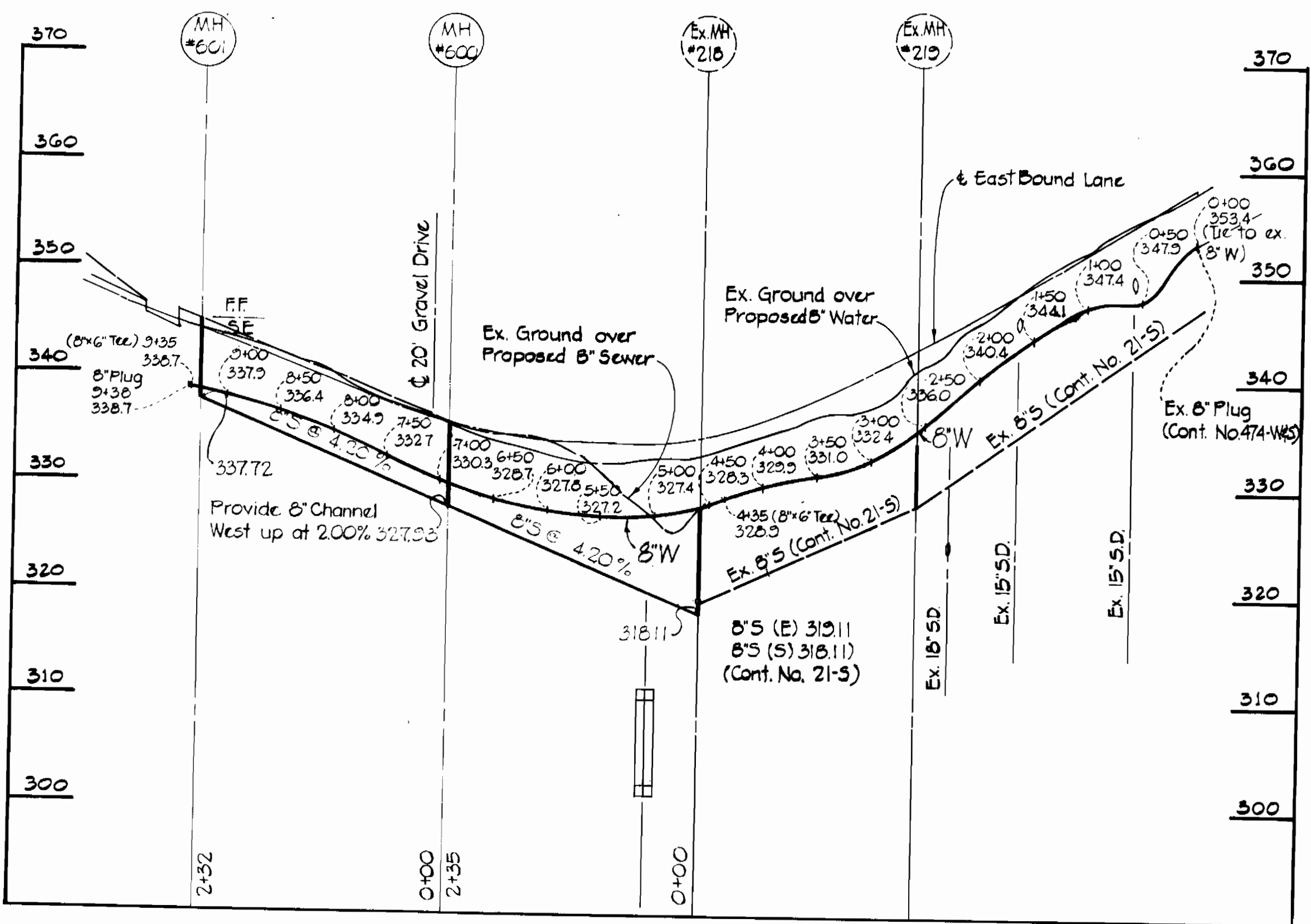
B.M. #1 ELEV. 361.619
Cross cut on fire hydrant road side Bonnet bolt near Arco station at entrance to Normandy Woods Apartments

B.M. #2 ELEV. 337.117
Cross cut on SW corner conc. drain box located in median strip west of Sucker Branch

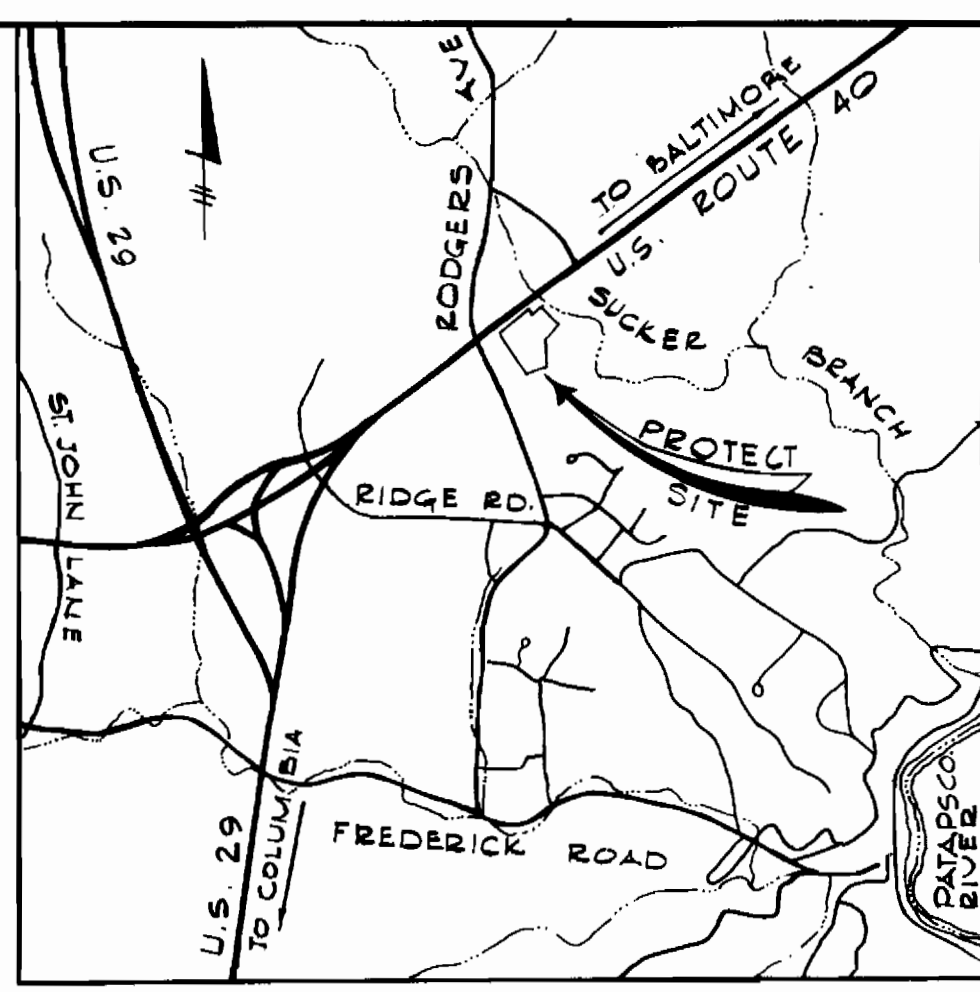
B.M. #3 ELEV. 352.964
3 Nails in G & E pole 455396 on property of Commercial And Farmers Bank

B.M. # 3243002 ELEV. 354.930
Concrete monument at surface 7.05' north of Signal Post in median between Commercial And Farmers Bank and Major Motors

BALTIMORE NATIONAL PIKE - U.S. ROUTE 40



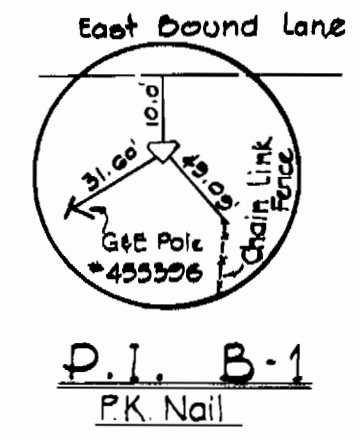
PROFILE
Hor: 1" = 100'
Vert: 1" = 10'



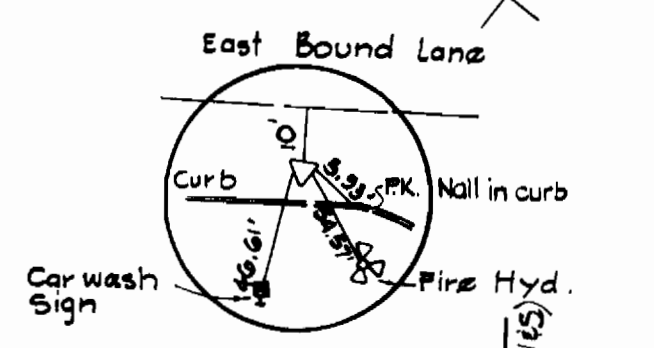
VICINITY MAP
SCALE: 1" = 2000'

GENERAL NOTES

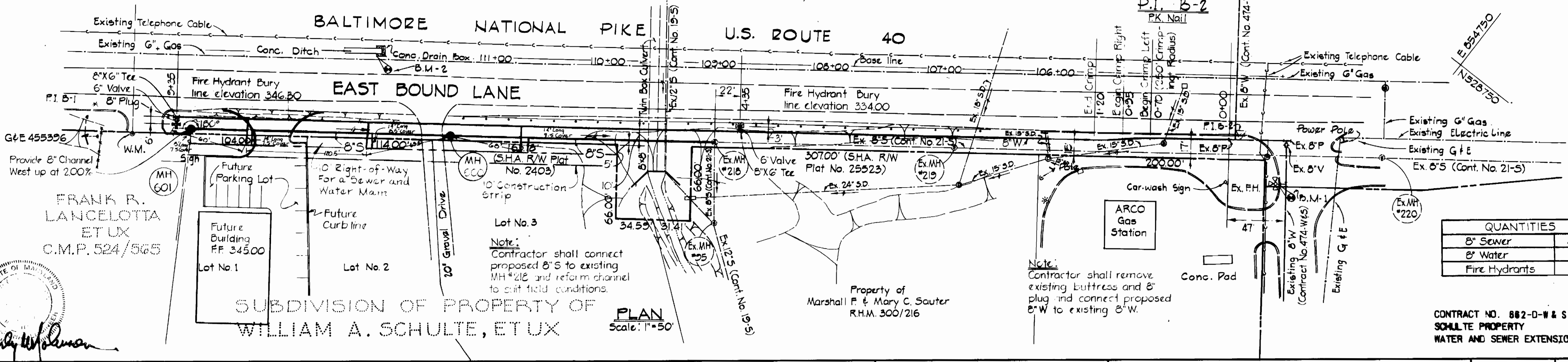
1. Approximate locations of existing utilities are shown. The contractor shall take all necessary precautions to protect the existing utilities and to maintain uninterrupted service. Any damage incurred due to contractor's operations shall be repaired immediately at the contractor's expense.
2. All pipe elevations shown are invert elevations.
3. The contractor must call collect "Miss Utility" at (301) 559-0100 and notify the following companies at least five (5) days before starting work shown on these plans:
Baltimore Gas and Electric Company
Chesapeake and Potomac Telephone Company
4. The contractor shall locate existing utilities well in advance of construction operations in the vicinity of utilities.
5. For all standard details see standards bound in specifications.
6. Buttrass or anchor all water main fittings with concrete, see standards bound in specifications.
7. Clear all utilities by a minimum of 6" clear all utility poles by 2'-0" minimum or tunnel as required. Any costs incurred to the contractor for tunneling or bracing at poles shall be included in unit price bid for excavation.
8. Top of water main to have a minimum of 3.5' cover unless otherwise noted.
9. Bury Line Elevation on fire hydrant shall be set to the elevation shown on the plan.
10. Cost of strapping fire hydrant and valve to be included in the unit price bid for furnishing and installing fire hydrant.
11. The fire hydrant shall be strapped to the tee and shall be buttrassed with concrete in accordance with standard details.
12. Elevations are based on United States Coast and Geodetic Survey Datum. Horizontal control is based on the Maryland State Plane Coordinate System.
13. The Contractor shall provide a pipe joint in all sewer mains within 2'-0" of exterior manhole walls.
14. All manholes shall be 4'-0" inside diameter, unless otherwise noted.



P.I. B-1
PK Nail



P.I. B-2
PK Nail



QUANTITIES	
8" Sewer	467 L.F.
8" Water	335 L.F.
Fire Hydrants	2 Ea.

CONTRACT NO. 662-D-W & S
SCHULTE PROPERTY
WATER AND SEWER EXTENSION

PURDUM & JESCHKE
ENGINEERS
1023 N. CALVERT ST.
BALTIMORE, MARYLAND

DEPARTMENT OF PUBLIC WORKS
HOWARD COUNTY, MARYLAND
DATE 9-5-75
W. O. Schulte
CHIEF-BUREAU OF ENGINEERING

CONTRACT NO. 662-D-W & S

PLAN AND PROFILE OF
WATER AND SEWER MAINS

SCHULTE PROPERTY
ELECTION DISTRICT NO. 2 - ELLICOTT CITY
HOWARD COUNTY, MARYLAND

DRAWING NO. 1 OF 1
SCALE AS SHOWN
DESIGNED: D.M.H.
DRAFTED: A.E.L.
CHECKED: T.A.F.