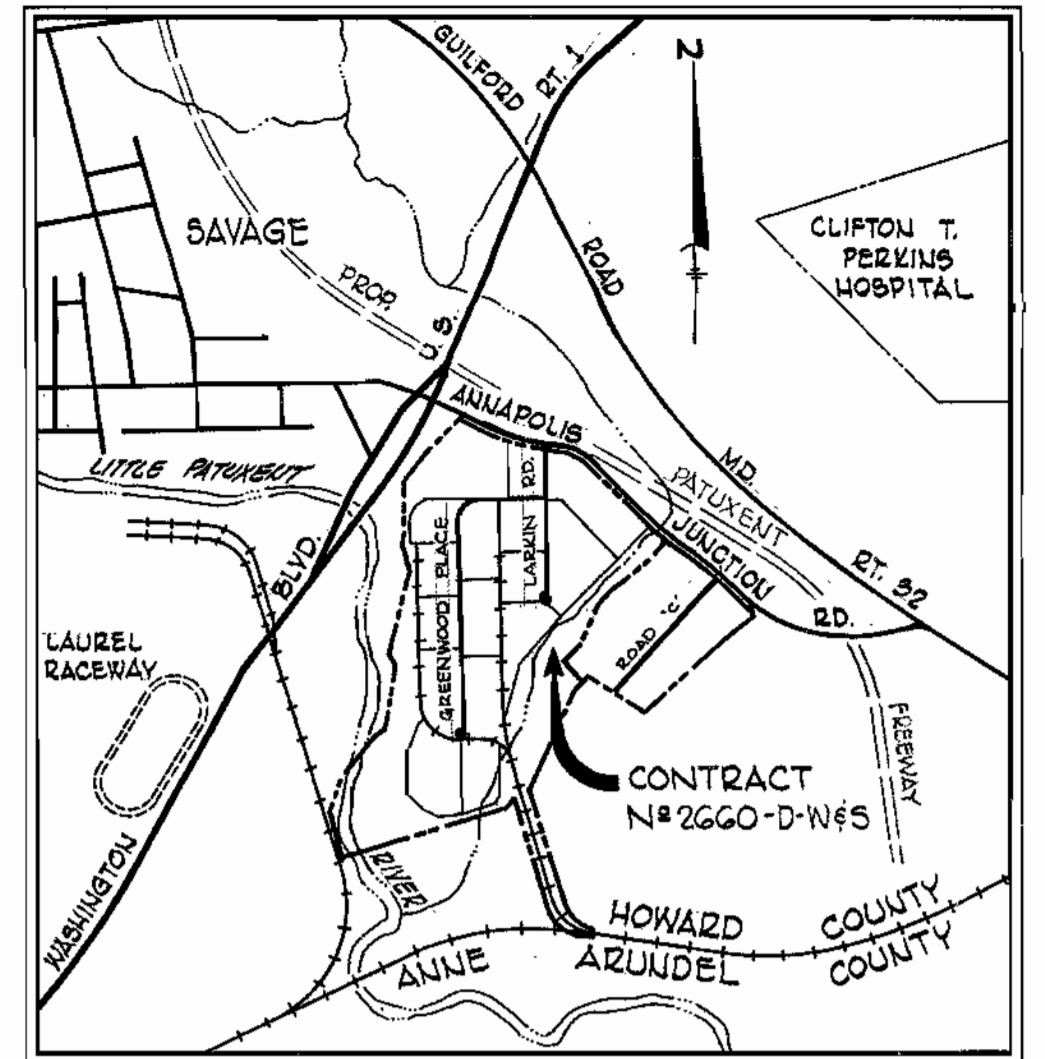


CORRIDOR INDUSTRIAL PARK SECTIONS 1 & 2

6TH ELECTION DISTRICT HOWARD COUNTY, MARYLAND



VICINITY MAP
Scale: 1" = 2,000'

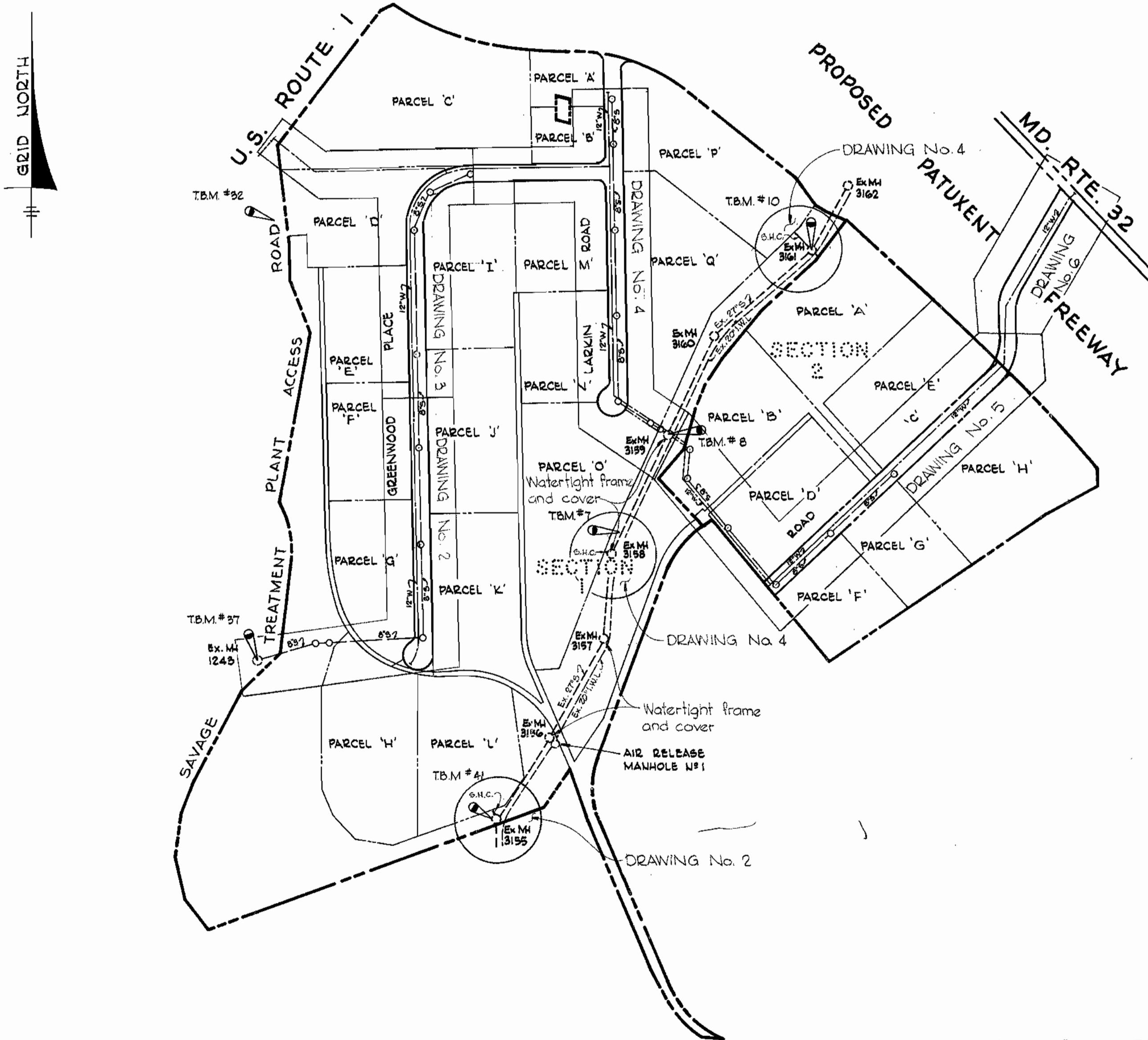
BENCH MARKS

T.B.M. #7	ELEV. 142.29
R.R. SPIKE IN BASE OF G & E POLE NO. 267835/ C & P POLE #6	
T.B.M. #8	ELEV. 144.33
PAINT ON RIM OF MANHOLE NO. 3159	
T.B.M. #10	ELEV. 149.87
PAINT ON RIM OF MANHOLE NO. 3161	
T.B.M. #32	ELEV. 144.85
R.R. SPIKE IN BASE OF 18 INCH OAK, 5'± RIGHT OF STA. 1+60± BETWEEN P.I. # W-1 AND P.I. # W-2	
T.B.M. #37	ELEV. 128.31
R.R. SPIKE IN BASE OF 40" SYCAMORE, 20'± RIGHT OF STA. 6+45± BETWEEN P.I. # W-6 AND P.I. # W-7	
T.B.M. #41	ELEV. 130.45
PAINT ON RIM OF MANHOLE NO. 3155	

QUANTITIES	
ITEM	QUANTITY
12" Water Main	9,130 L.F.
6" Water Main	150 L.F.
Fire Hydrants	14
8" Sewer Main	6,360 L.F.

GENERAL NOTES

1. APPROXIMATE LOCATION OF EXISTING MAINS ARE SHOWN. THE CONTRACTOR SHALL TAKE ALL NECESSARY PRECAUTIONS TO PROTECT EXISTING SERVICES AND MAINTAIN UNINTERRUPTED SUPPLY. ANY DAMAGE INCURRED SHALL BE REPAIRED IMMEDIATELY.
2. ALL PIPE ELEVATIONS SHOWN ARE INVERT ELEVATIONS.
3. THE CONTRACTOR SHALL LOCATE EXISTING UTILITIES A MINIMUM OF TWO WEEKS IN ADVANCE OF CONSTRUCTION OPERATIONS IN VICINITY OF UTILITIES.
4. FOR ALL STANDARD DETAILS, SEE STANDARD BOUND IN SPECIFICATIONS.
5. THE CONTRACTOR SHALL PROVIDE A JOINT IN ALL SEWER MAINS WITH 2'-0" OF EXTERIOR MANHOLE WALLS.
6. ALL HORIZONTAL AND VERTICAL CONTROLS ARE BASED ON MARYLAND STATE DATUM.
7. ALL MANHOLES SHALL BE 4'-0" INSIDE DIAMETER UNLESS OTHERWISE NOTED.
8. ALL WATER MAINS TO HAVE A MIN. OF 3-1/2' COVER UNLESS OTHERWISE NOTED.
9. BLOCK ALL FITTINGS WITH CONCRETE, SEE STANDARD BOUND IN SPECIFICATIONS.
10. BUILD ALL MANHOLES TO EXISTING GRADE UNLESS OTHERWISE NOTED.
11. GROUND TO BE ROUGH GRADED BEFORE CONSTRUCTION OF MANHOLES IN CUT AND FILL AREAS.
12. ALL FIRE HYDRANTS SHALL BE STRAPPED TO TEES AND SHALL BE BUTTRESSED WITH CONCRETE IN ACCORDANCE WITH STANDARD DETAILS.
13. CLEAR ALL UTILITIES BY A MINIMUM OF 6 INCHES.
14. ALL SEWERS SHALL BE V.C.P.X., C.S.P.X. OR A.C.P. CLASS 2400, UNLESS OTHERWISE NOTED.
15. WHERE SEWER SERVICE CONNECTIONS ENTER MANHOLES, INVERTS SHALL BE CHANNELIZED TO ACCOMMODATE FLOW.
16. PROFILE STATIONS SHALL BE ADJUSTED AS NECESSARY TO CONFORM TO PLAN DIMENSIONS.
17. BURY LINE ELEVATIONS ON FIRE HYDRANTS SHALL BE SET TO ELEVATIONS SHOWN ON DRAWINGS.
18. ALL FIRE HYDRANTS SHALL BE STRAPPED TO THE TEE AND SHALL BE BUTTRESSED WITH CONCRETE IN ACCORDANCE WITH STANDARD DETAILS.
19. COST OF STRAPPING HYDRANTS AND VALVES TO TEES SHALL BE INCLUDED IN THE UNIT PRICES BID FOR FURNISHING AND LAYING WATER MAINS.

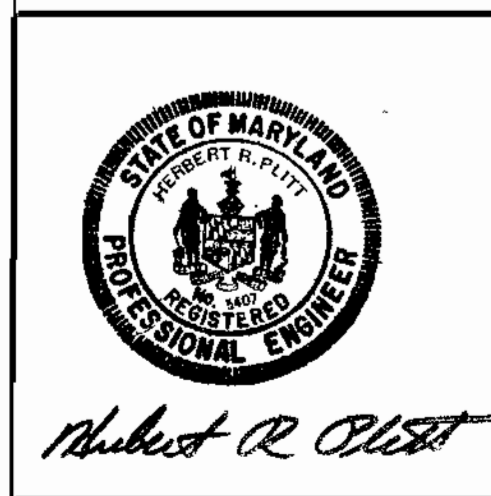


PLAN
Scale: 1" = 400'

NOTE: SEWER PIPES - "CERTAINTED" A.C.P. CLASS 2400
 WATER PIPES - "CERTAINTED" A.C.P. CLASS 150
 " " - "GRIFFIN" D.I.P.
 SEWER PIPES - "GRIFFIN" C.I.P. CLASS 22

Corridor Industrial Park
 Sections 1 & 2
 Contract No. 2660-D-W&S

FOR FURTHER "AS-BUILT" INFO SEE FILE COPY



CENTURY ENGINEERING, INC.
 CONSULTING ENGINEERS - PLANNERS
 TOWSON, MARYLAND 21204

DEPARTMENT OF PUBLIC WORKS
 HOWARD COUNTY, MARYLAND
 DATE: 9-19-75
 W. O. Silbert
 CHIEF - BUREAU OF ENGINEERING

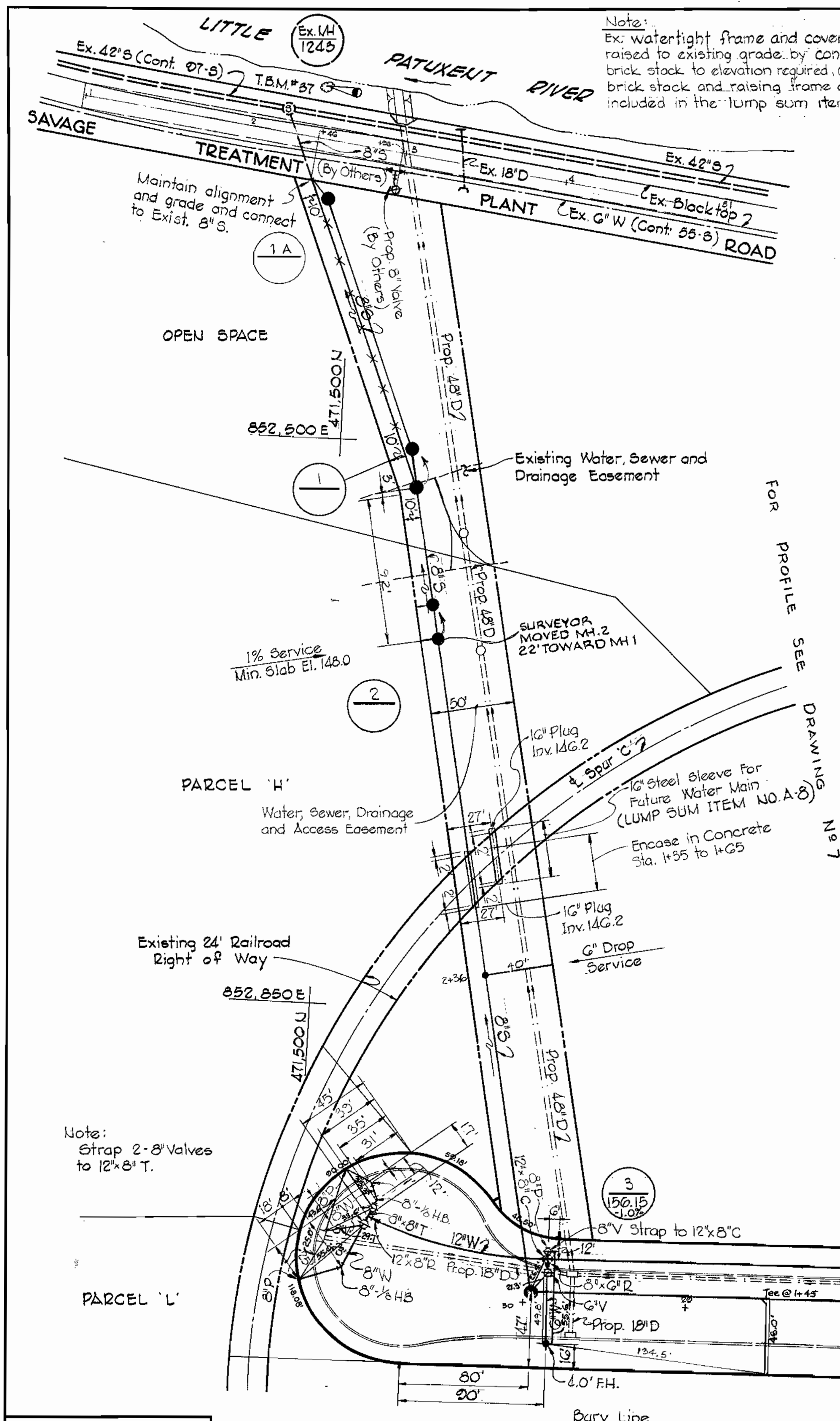
CONTRACT NO. 2660-D-W&S

VICINITY MAP
 AND LOCATION PLAN

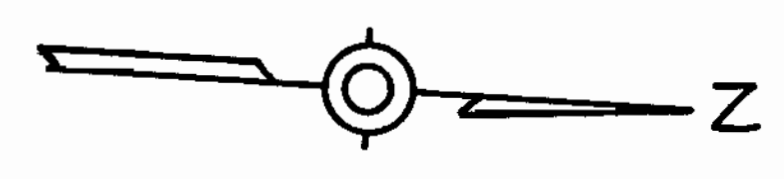
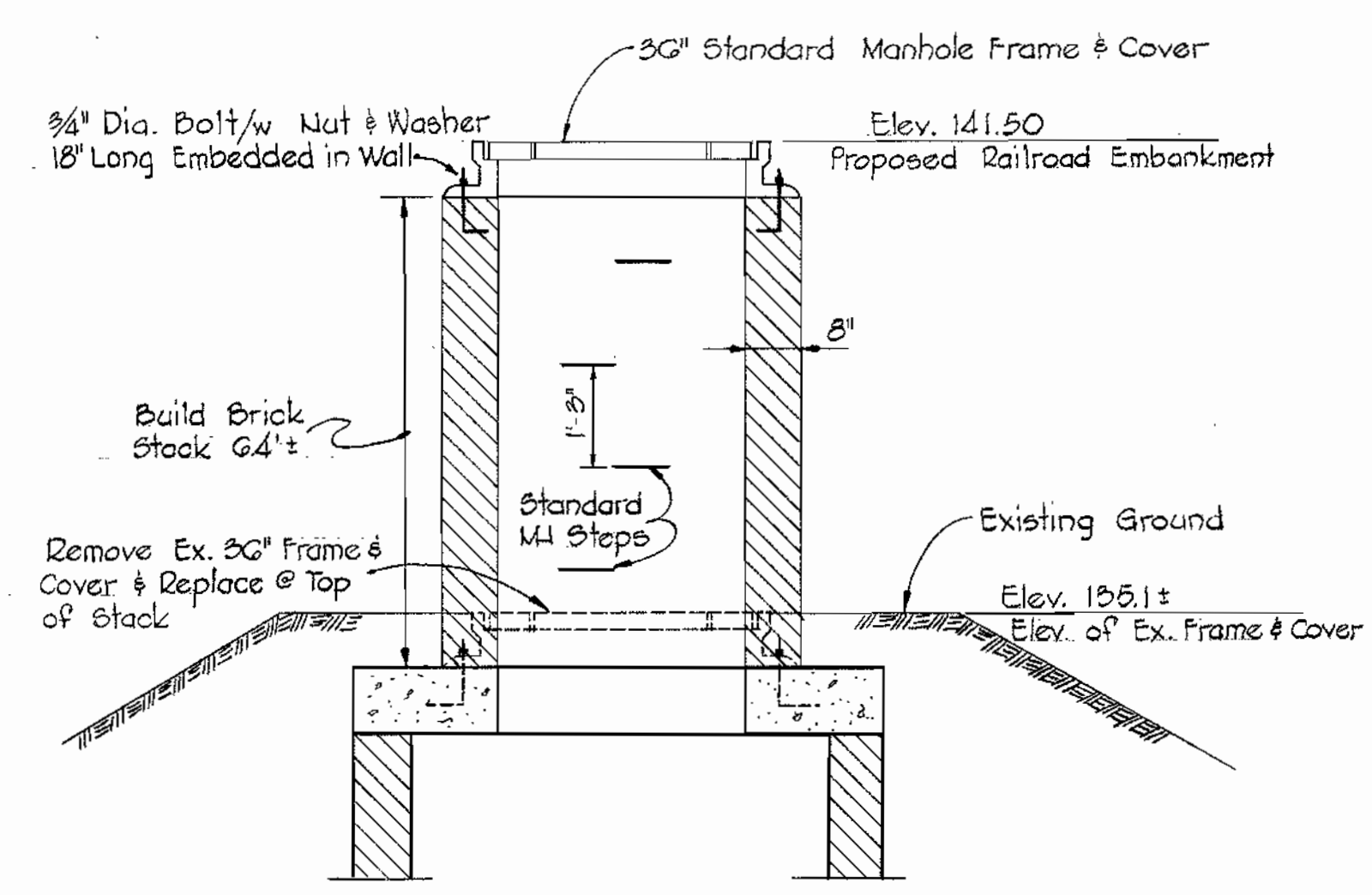
CORRIDOR
 INDUSTRIAL PARK - SECTION 1 & 2
 ELECTION DISTRICT GUILFORD NO. 6

DRAWING NO. 1 OF 8	SCALE AS SHOWN
--------------------	----------------

RSM 099 SM



Note:
Ex. watertight frame and cover at MH 1243 shall be raised to existing grade by constructing a 24" dia. brick stack to elevation required. Cost of building brick stack and raising frame and cover shall be included in the lump sum item A-19.



NOTE:
FOR SEWER SERVICE CONNECTION TO PARCEL "L" SEE THIS DRAWING.

CENTURY ENGINEERING, INC.
CONSULTING ENGINEERS - PLANNERS
TOWSON, MARYLAND 21204

DEPARTMENT OF PUBLIC WORKS
HOWARD COUNTY, MARYLAND
9-19-75
W. O. Palbert
CHIEF - BUREAU OF ENGINEERING

CONTRACT NO. 2660-D-W8S

PLANS AND DETAIL OF
WATER AND SEWER MAINS

CORRIDOR INDUSTRIAL PARK - SECTION 1 & 2
ELECTION DISTRICT GUILFORD NO. 6

DRAWING NO. 2 OF 8
SCALE AS SHOWN

2-26-76	Relocation of 8" W.C. - Parcel "J"
No.	Date
	Revision

AS-BUILT 8-30-76

Corridor Industrial Park
Sections 1 & 2
Contract No. 2660-D-W8S

SEPTEMBER 18, 1975

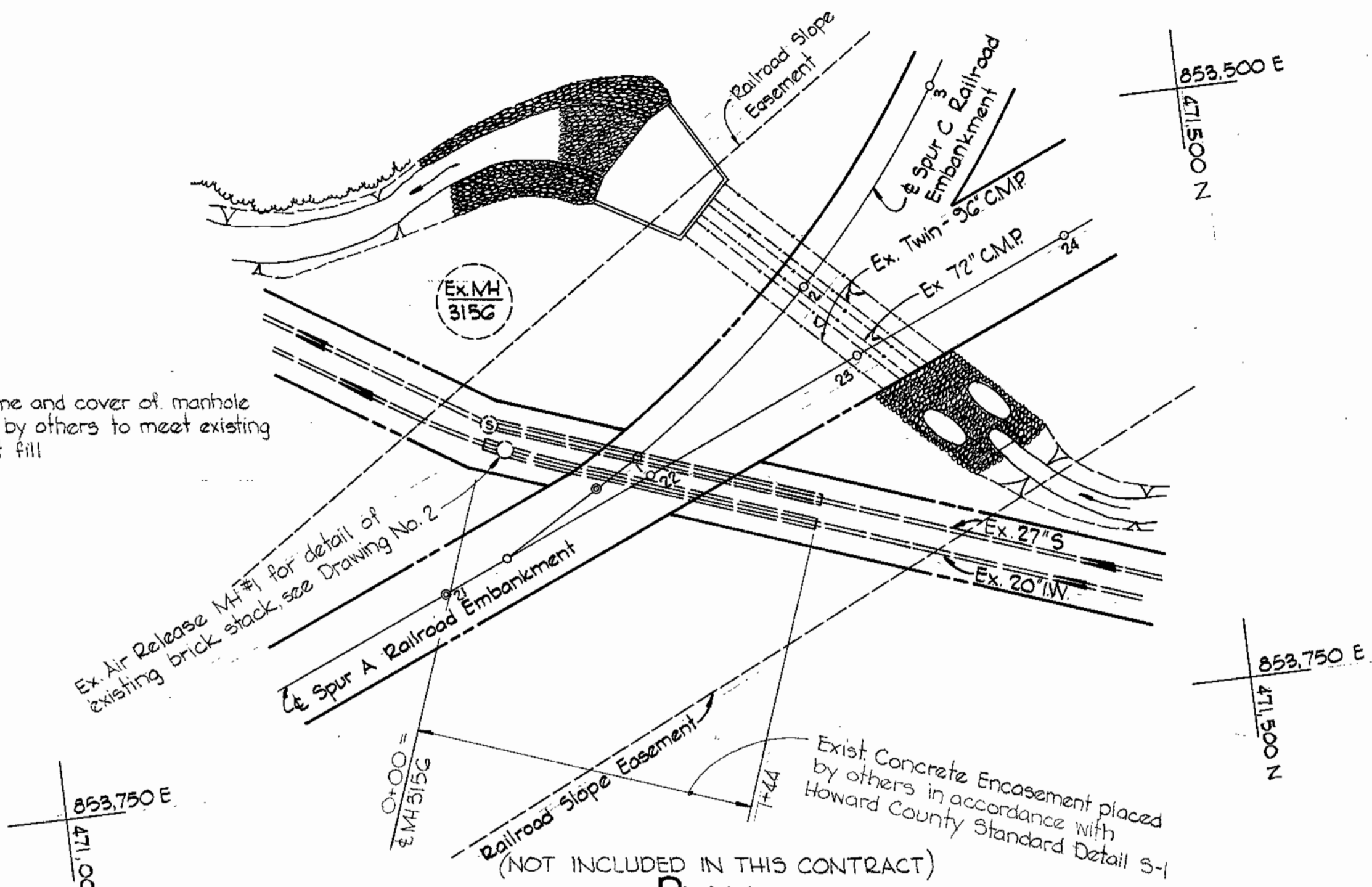
WS 660 W-5/2



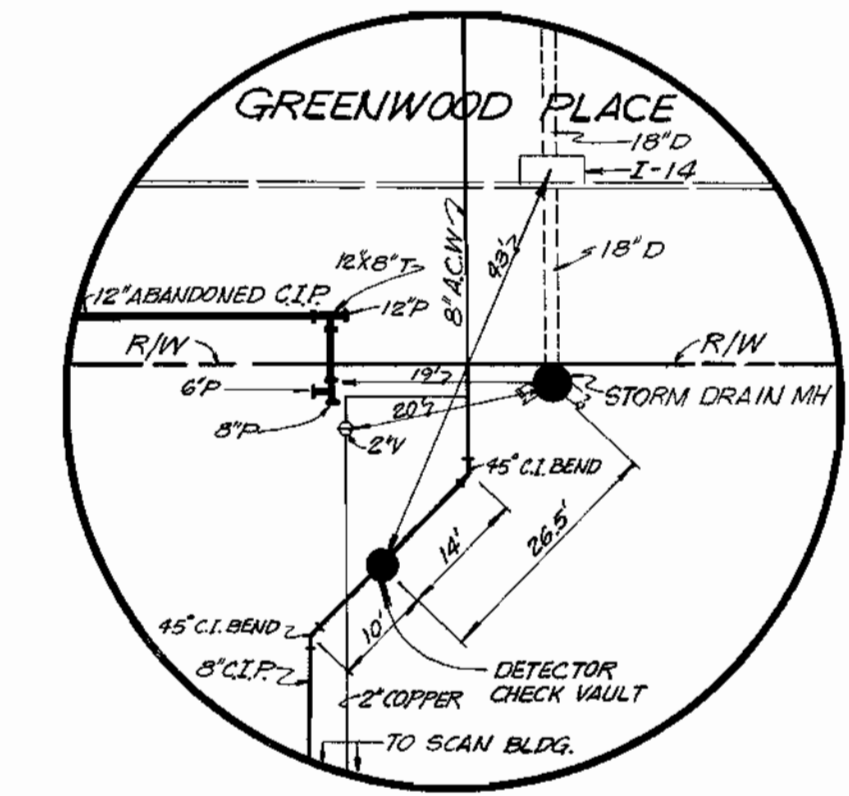
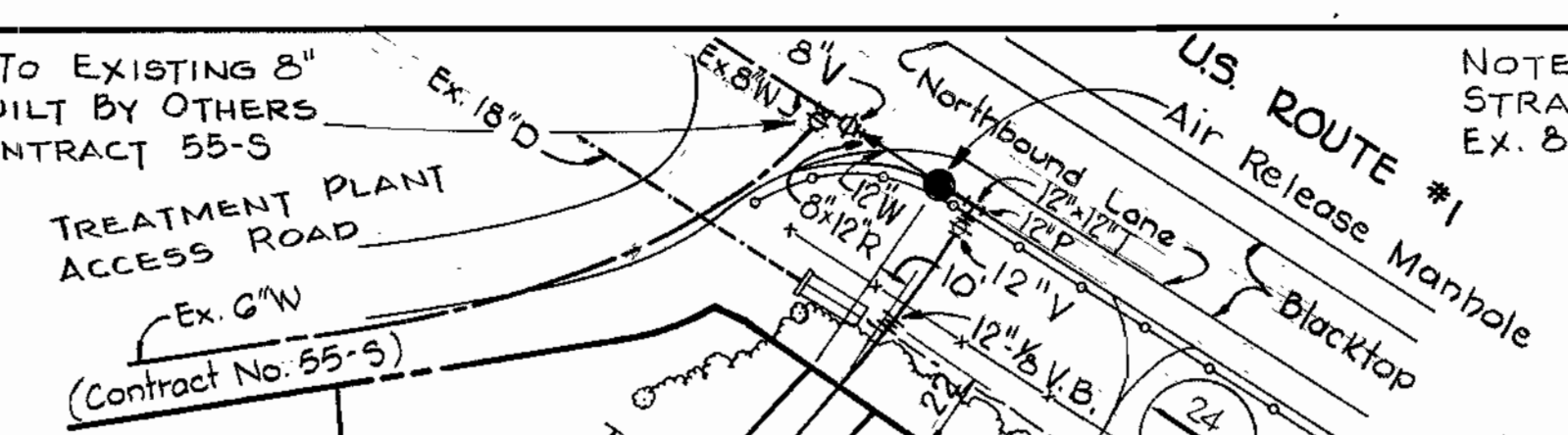
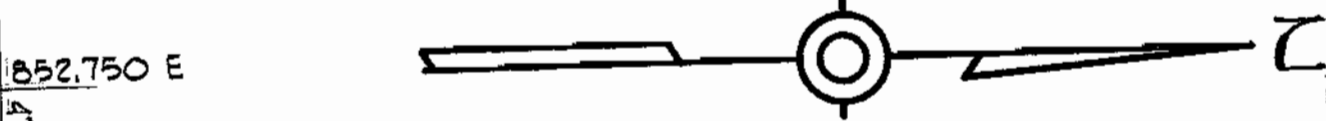
CONNECT TO EXISTING 8" WATER BUILT BY OTHERS UNDER CONTRACT 55-S

NOTE: STRAP 8" VALVE TO EX. 8" x 6" TEE

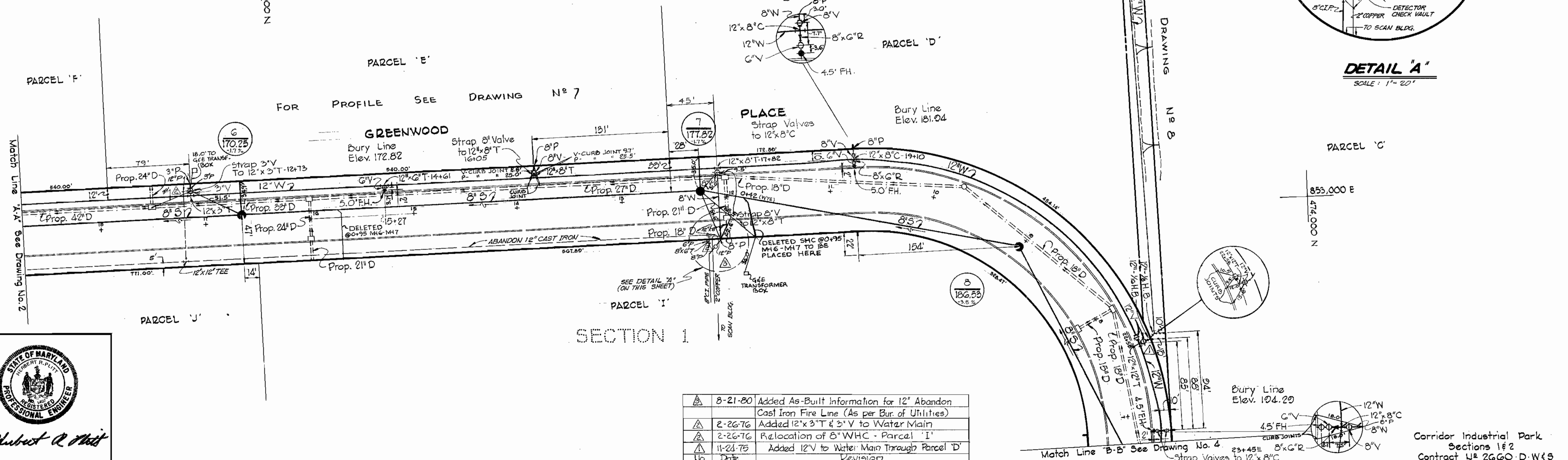
Note
Existing Frame and cover of manhole 315G raised by others to meet existing embankment fill



EXISTING PIPELINE ENCASEMENT AT RAILROAD EMBANKMENT



DETAIL "A"
SCALE: 1" = 20'



No.	Date	Revision
1	8-21-80	Added As-Built Information for 12" Abandon Cast Iron Fire Line (As per Bur. of Utilities)
2	2-26-76	Added 12" x 3" T & 3" V to Water Main
3	2-26-76	Relocation of 8" WHC - Parcel 'I'
4	11-23-75	Added 12" V to Water Main Through Parcel 'I'



CENTURY ENGINEERING, INC.
CONSULTING ENGINEERS - PLANNERS
TOWSON, MARYLAND 21204

DEPARTMENT OF PUBLIC WORKS
HOWARD COUNTY, MARYLAND
9-19-75
DATE

CONTRACT NO. 2660-D-WBS

PLAN OF WATER AND SEWER MAINS

CORRIDOR INDUSTRIAL PARK - SECTION 1&2
ELECTION DISTRICT GUILFORD NO. 6

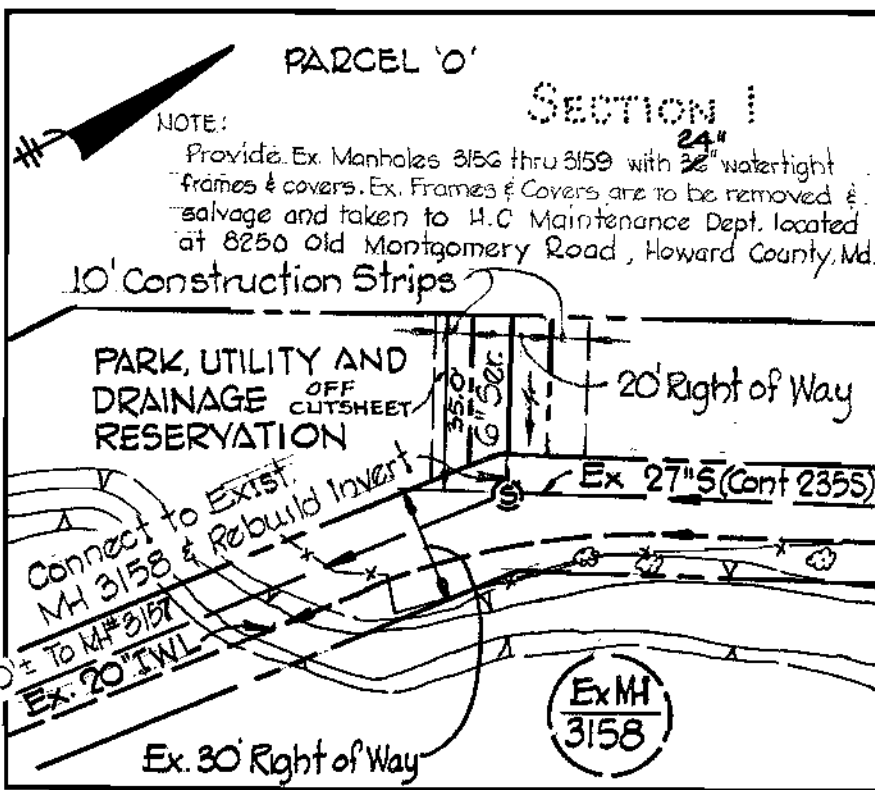
DRAWING NO. 3 OF 8
SCALE 1" = 50'

AS BUILT 8-30-76

NOVEMBER 24, 1975

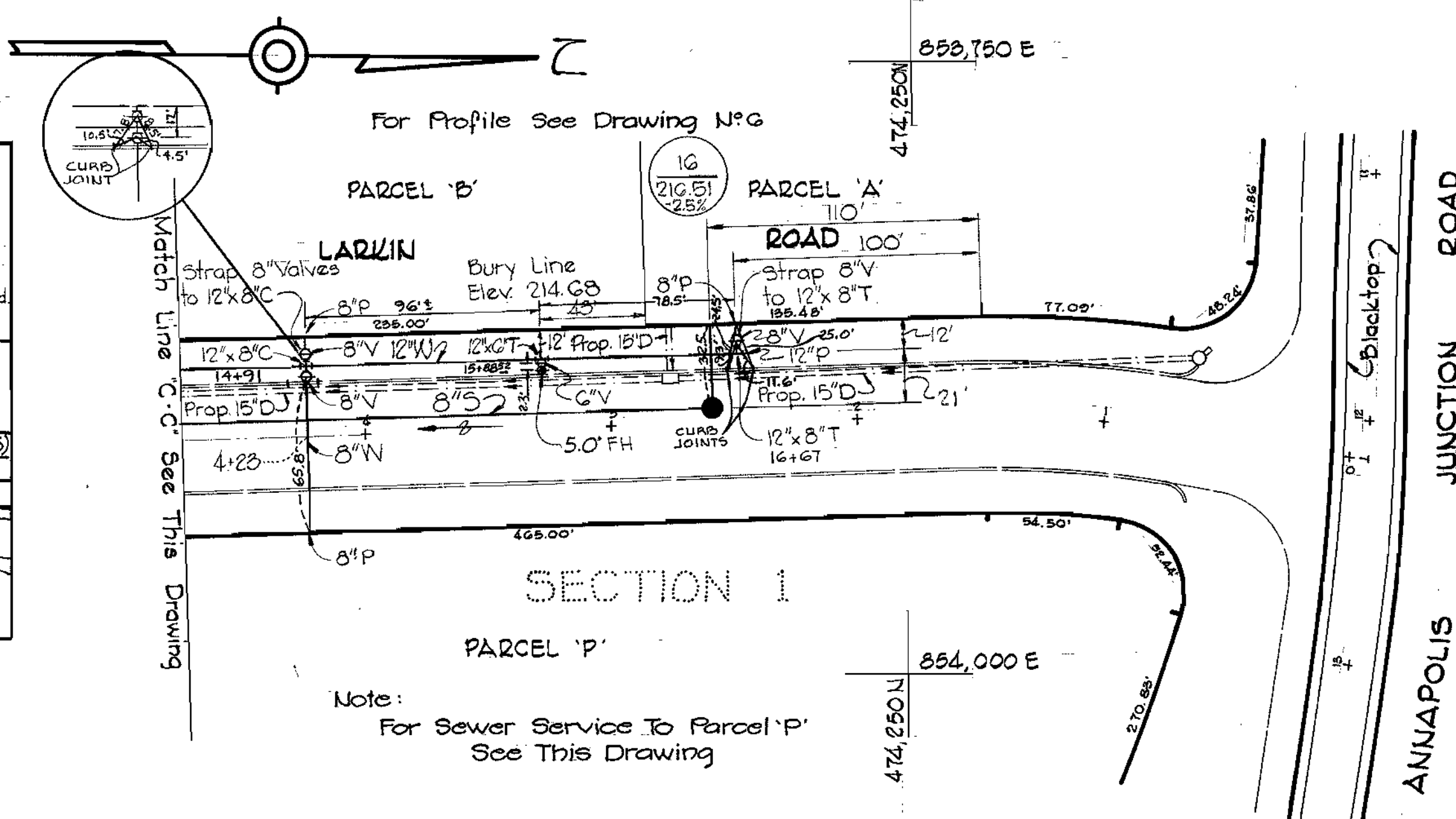
WS 660 W-S/3

Note:
Cost of removing existing frames and covers and placing watertight frames and covers shall be included in the lump sum item A-19.



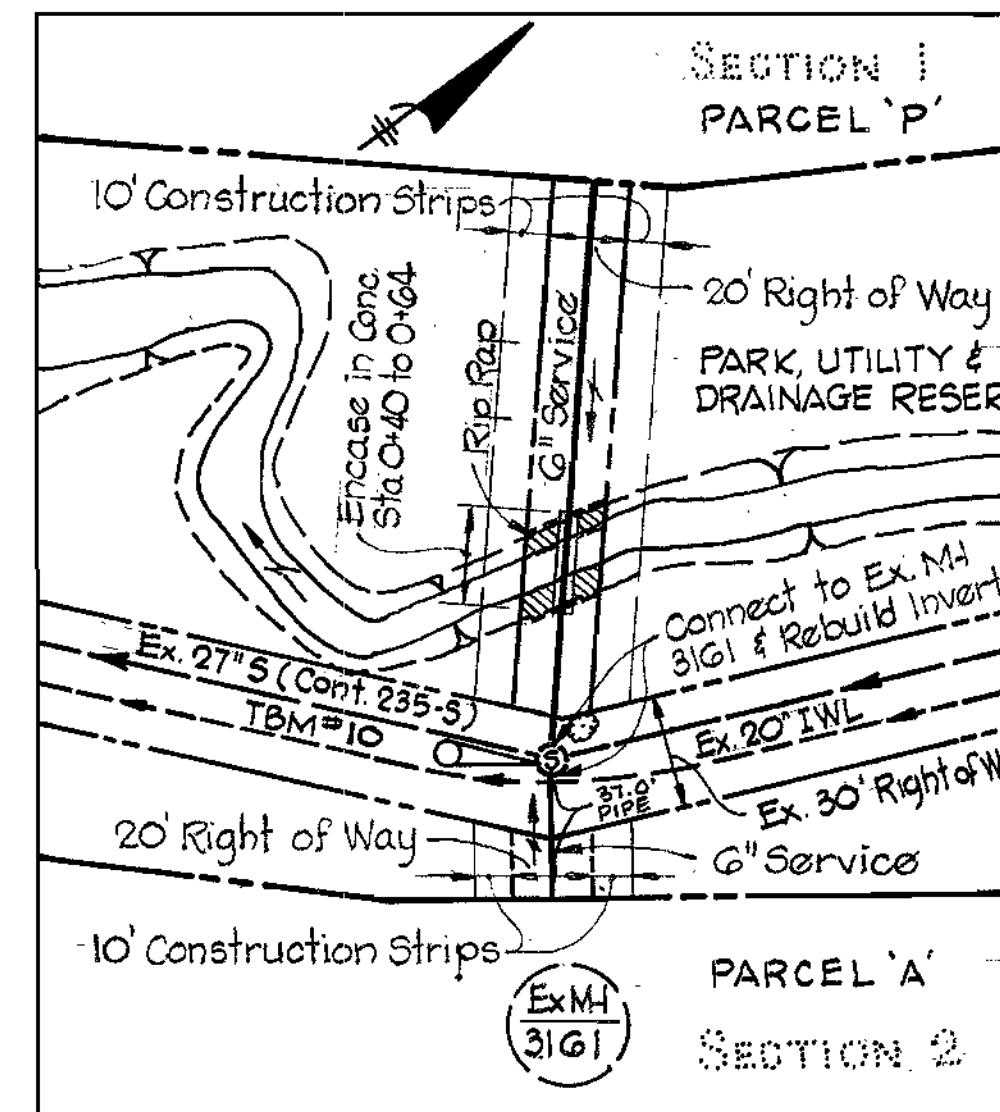
SEWER SERVICE - PARCEL O'

For Location See Sheet 1 of 8



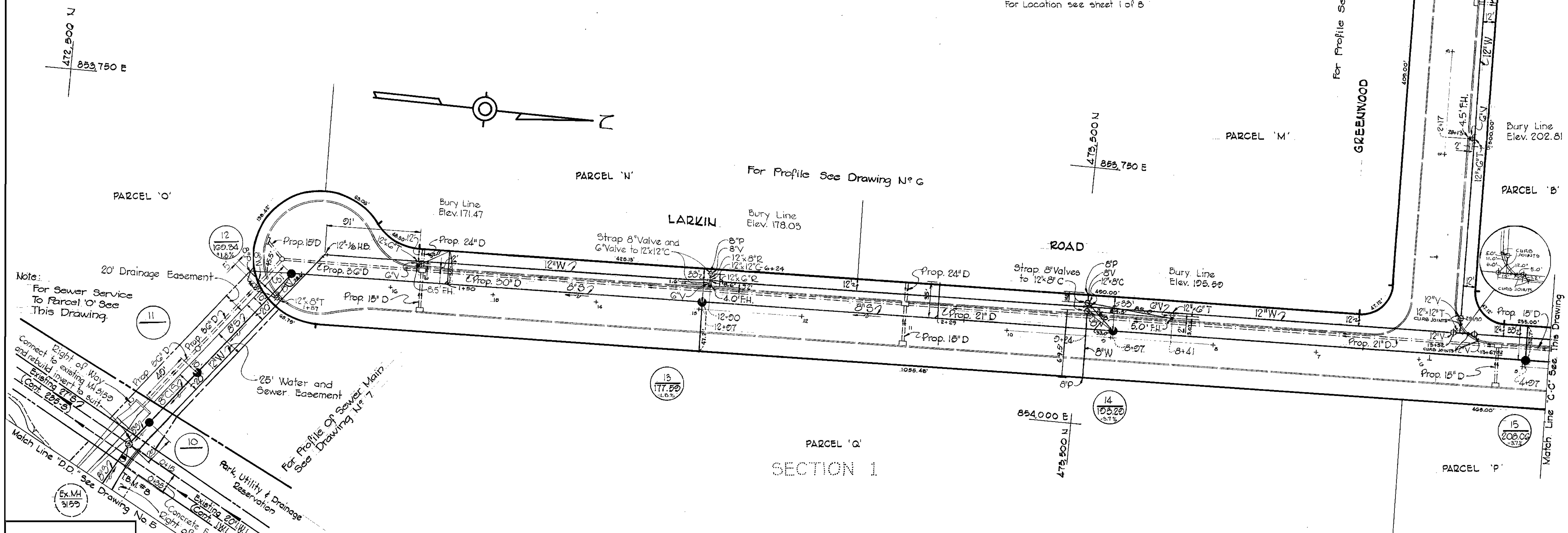
SEWER SERVICE - PARCEL P'

Note:
For Sewer Service To Parcel P' See This Drawing



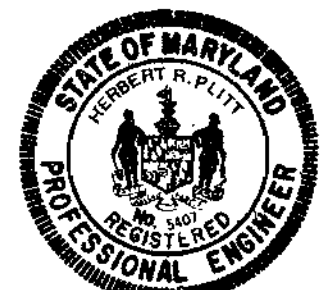
SEWER SERVICE - PARCEL P' & PARCEL A'

For Location see sheet 1 of 8



Note:
For Sewer Service To Parcel O' See This Drawing

25' Water and Sewer Easement
For Profile See Drawing N-7



Robert R. Peltz

CENTURY ENGINEERING, INC.
CONSULTING ENGINEERS - PLANNERS
TOWSON, MARYLAND 21204

DEPARTMENT OF PUBLIC WORKS
HOWARD COUNTY, MARYLAND
9-19-75
W. O. Peltz
CHIEF - BUREAU OF ENGINEERING

CONTRACT NO. 660-D-W8S

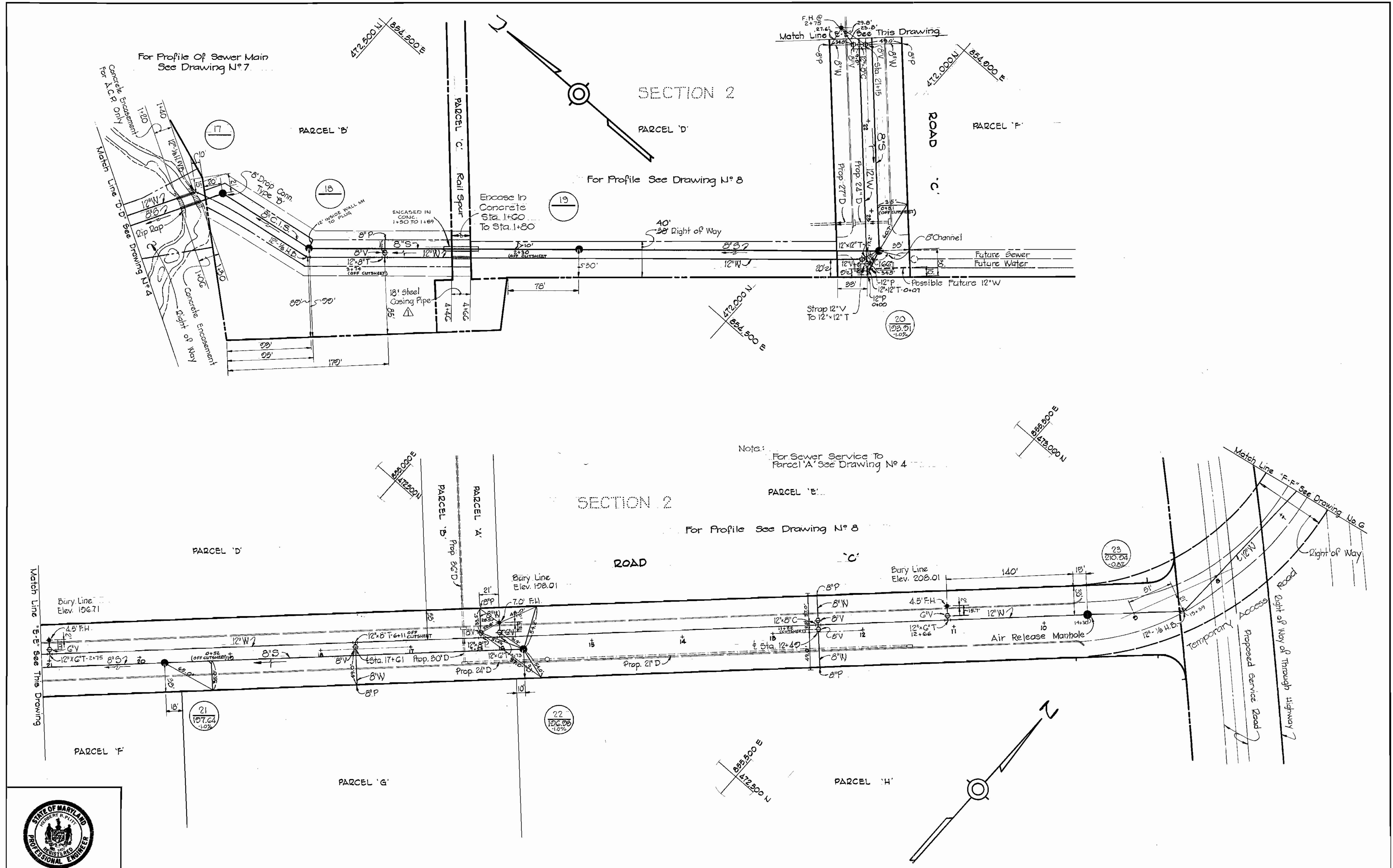
PLAN OF
WATER AND SEWER MAINS

CORRIDOR
INDUSTRIAL PARK - SECTION 1&2
ELECTION DISTRICT GUILFORD NO.6

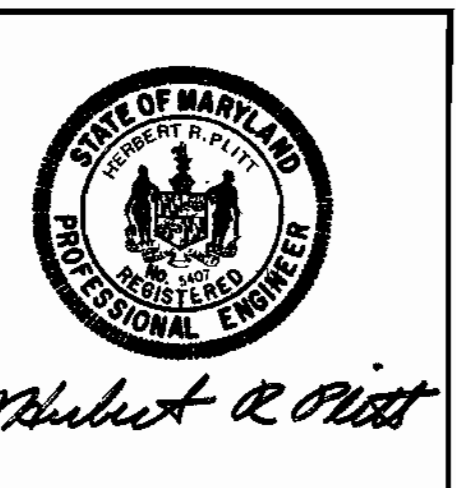
DRAWING NO. 4 OF 8
SCALE 1" = 50'

Corridor Industrial Park
Sections 1&2
Contract No. 2660-D-W4S

WS 660 W-5/4



Note: For Sewer Service To Parcel 'A' See Drawing No 4



CENTURY ENGINEERING, INC.
CONSULTING ENGINEERS - PLANNERS
TOWSON, MARYLAND 21204

DEPARTMENT OF PUBLIC WORKS
HOWARD COUNTY, MARYLAND
9-19-75
DATE

CONTRACT NO. 2660-D-W&S

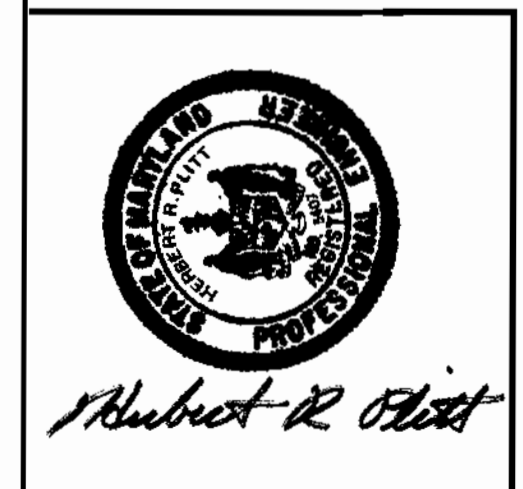
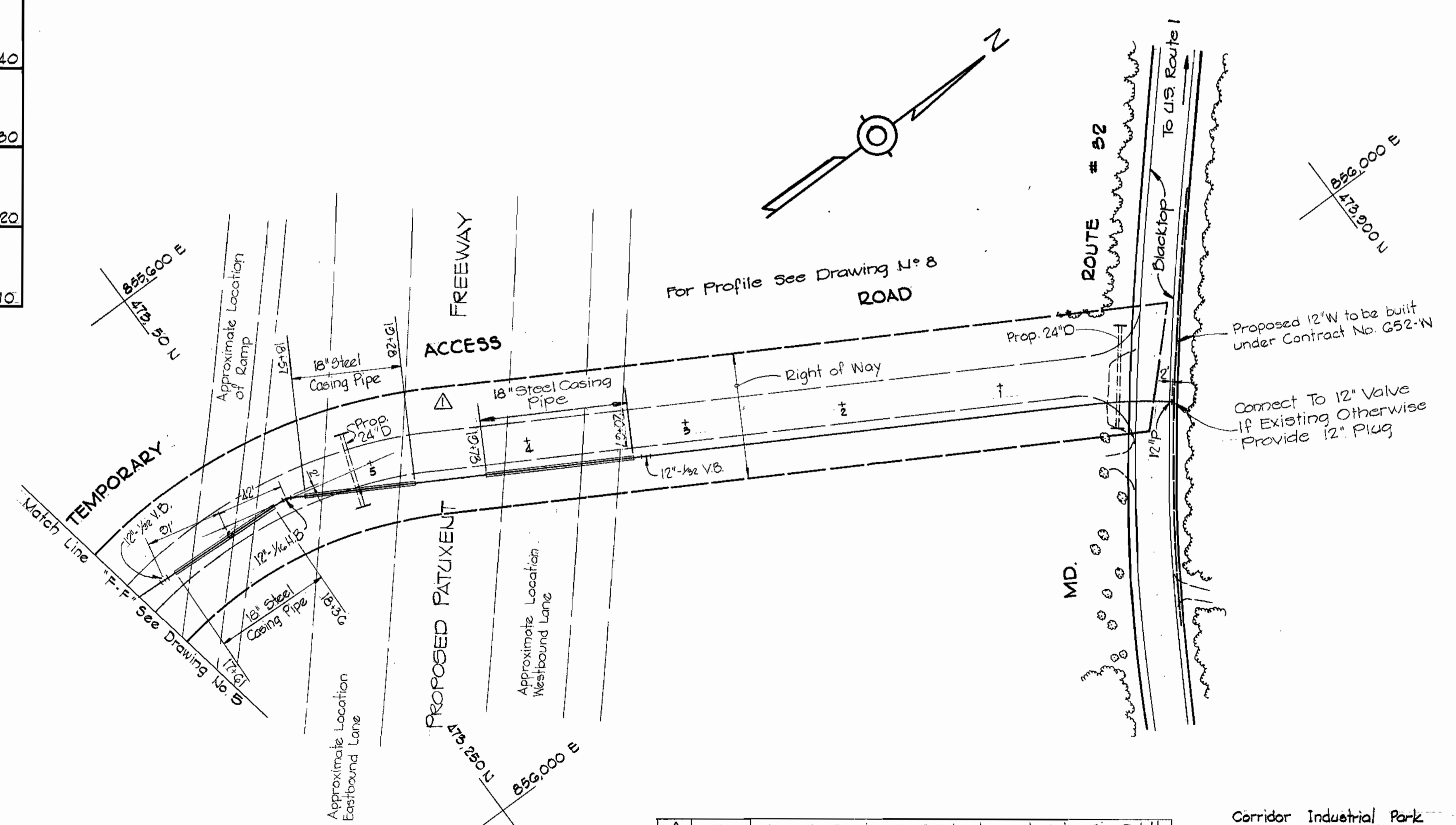
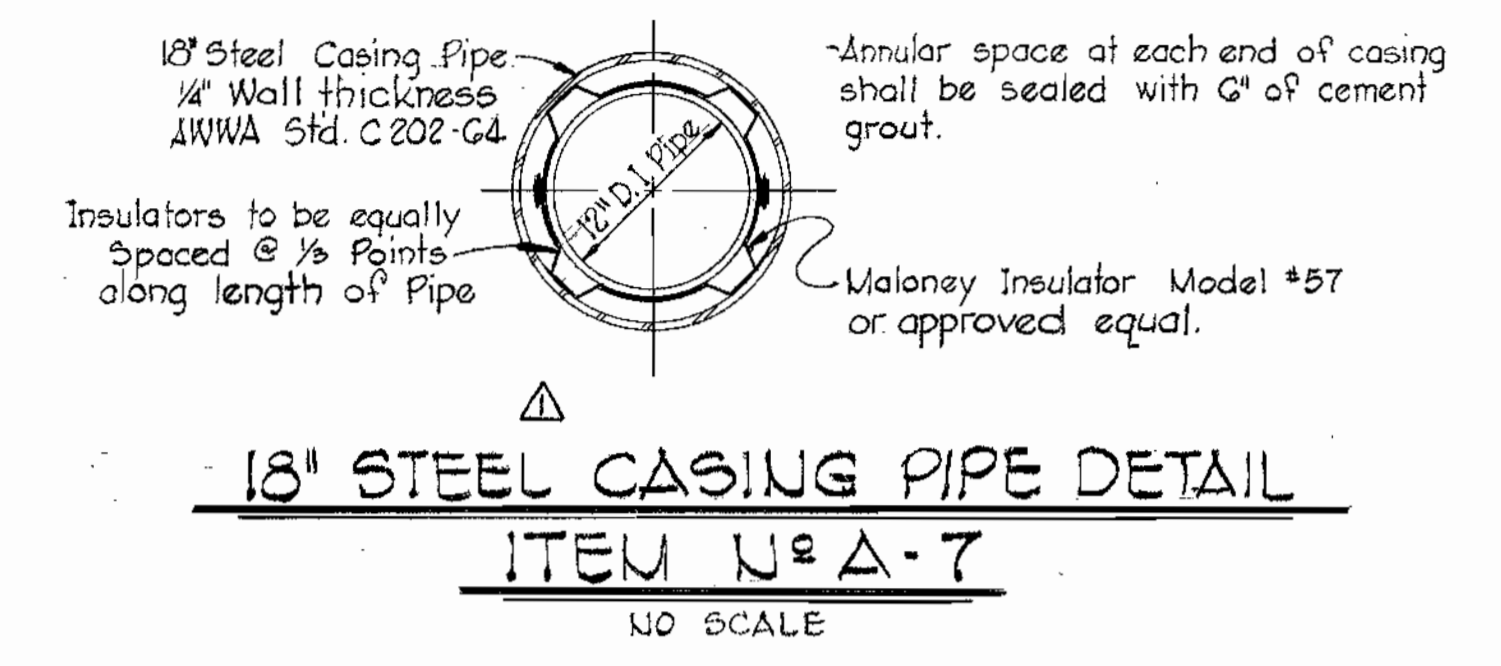
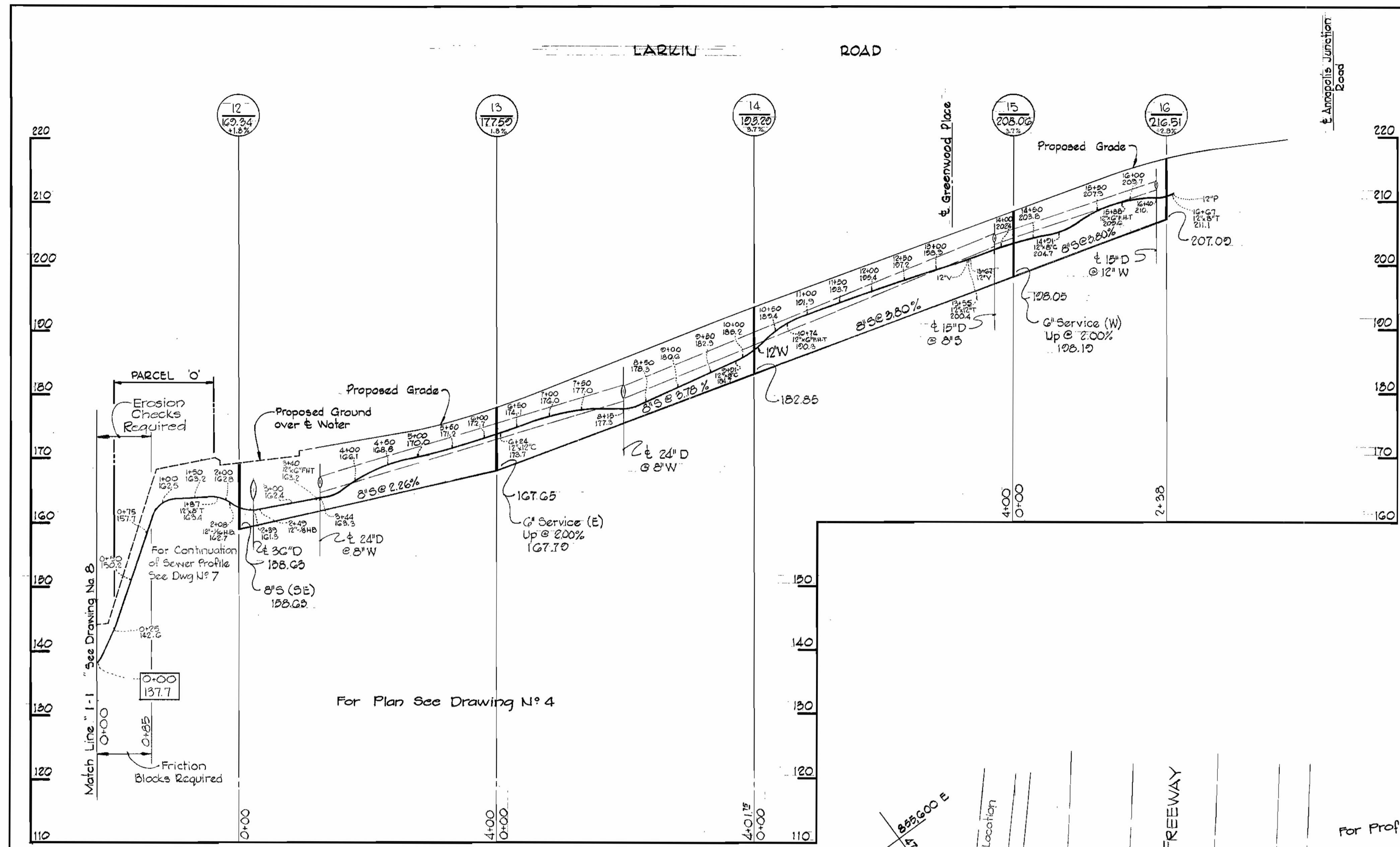
PLAN OF WATER AND SEWER MAINS

CORRIDOR INDUSTRIAL PARK - SECTION 1&2
ELECTION DISTRICT GUILFORD NO. 6

DRAWING NO. 5 OF 8
SCALE 1"=50'

11-24-75	Changed 16" Casing to 18" Casing @ Rail Road Spur
11-24-75	Revision

WS 660 W-5/5



CENTURY ENGINEERING, INC.
CONSULTING ENGINEERS - PLANNERS
TOWSON, MARYLAND 21204

DEPARTMENT OF PUBLIC WORKS
HOWARD COUNTY, MARYLAND
9-19-75
DATE

CONTRACT NO. 2660-D-WBS

PLAN AND PROFILES OF
WATER AND SEWER MAINS

CORRIDOR INDUSTRIAL PARK
SECTION 1 & 2
ELECTION DISTRICT GUILFORD NO. 6

DRAWING NO. 6 OF 8
SCALE AS SHOWN

No.	Date	Revision
11-24-75		Changed 16" Casing To 18" Casing & Corrected Casing Pipe Detail

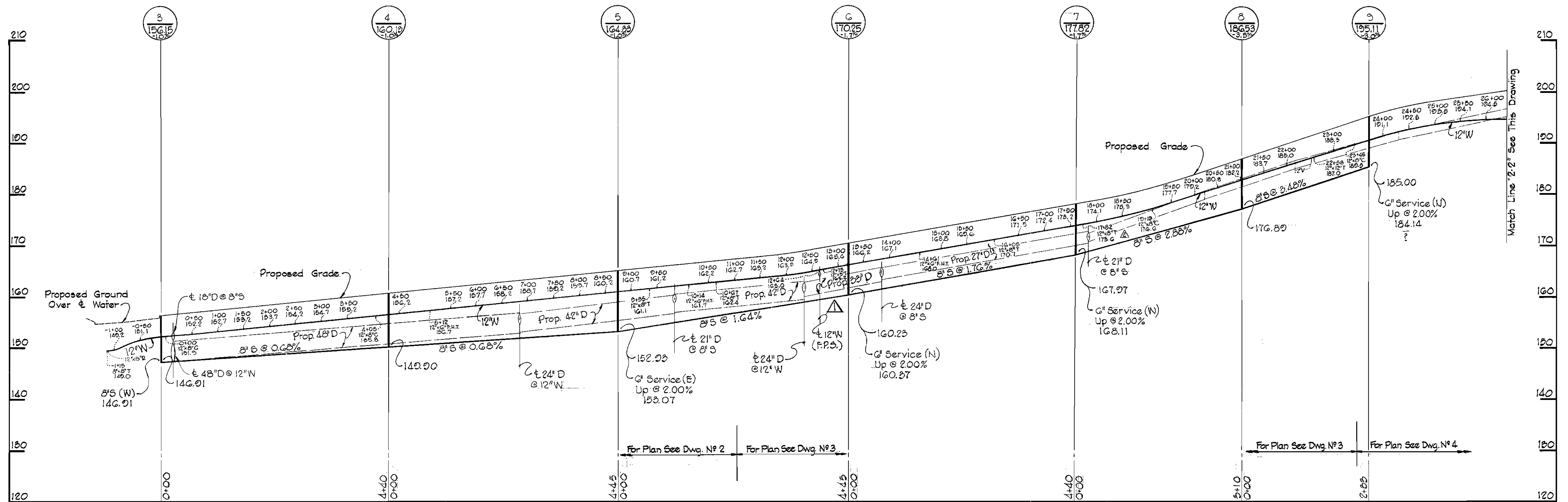
Corridor Industrial Park
Sections 1 & 2
Cont. N° 2660-D-WBS

AS-BUILT 8-30-76

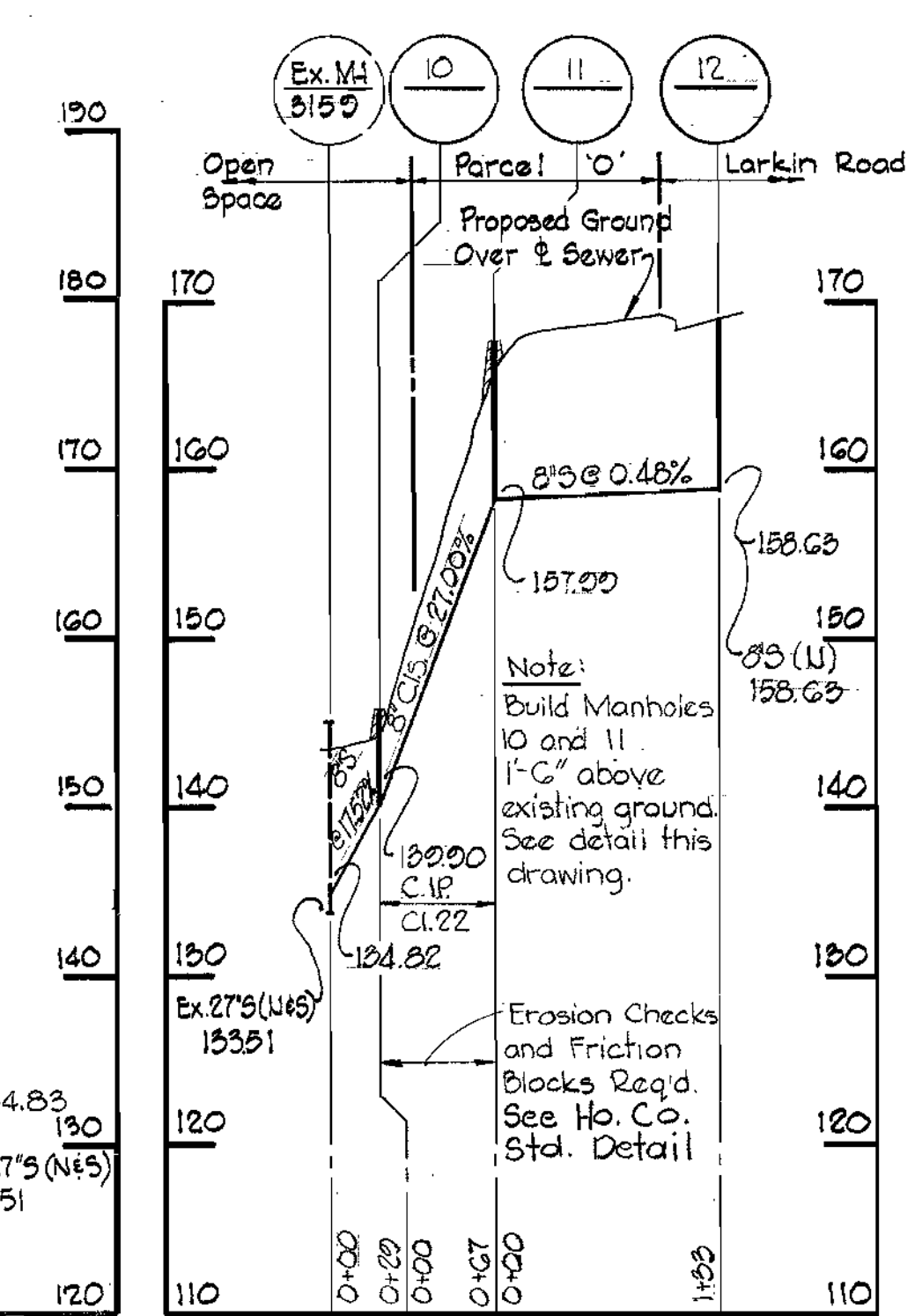
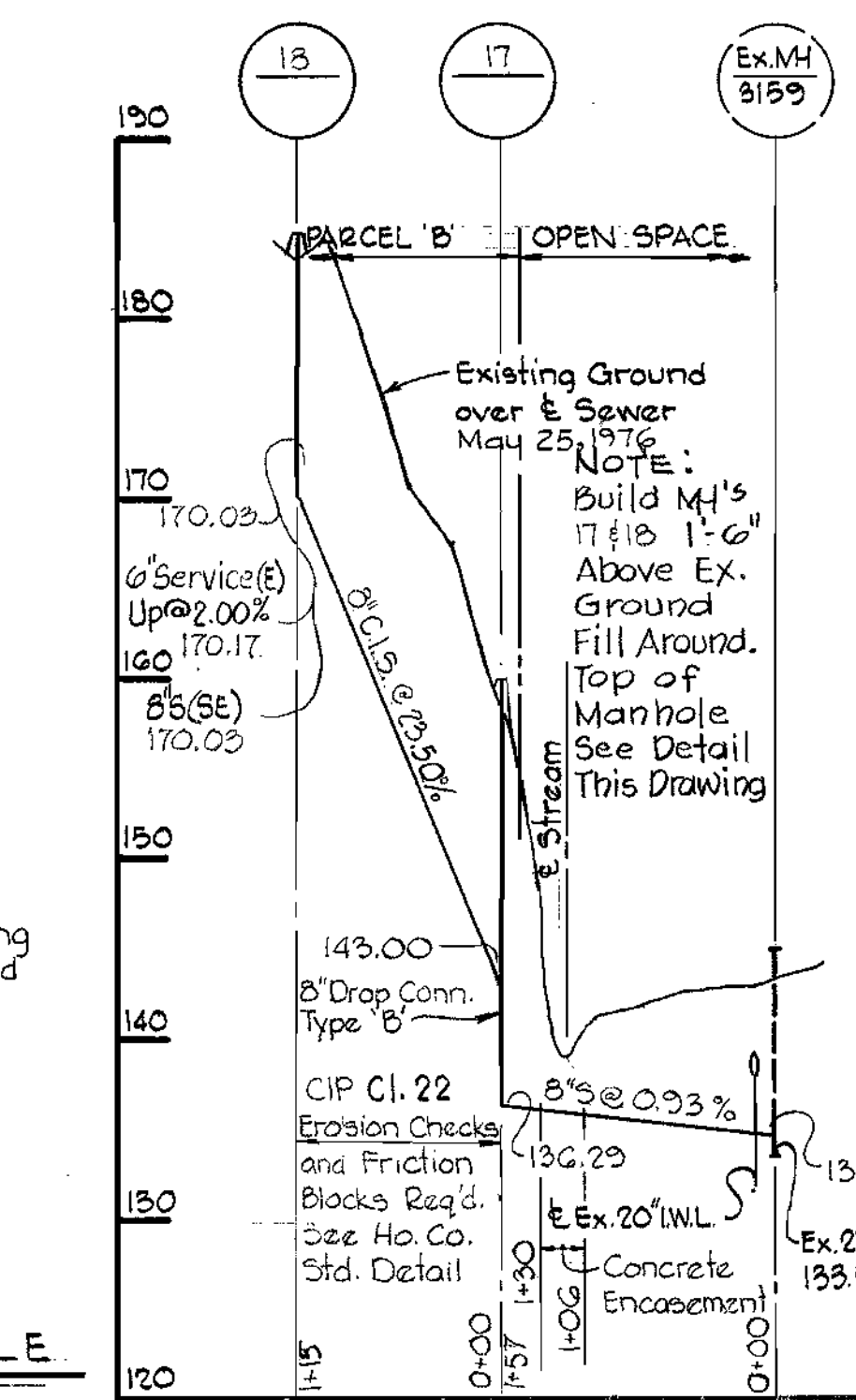
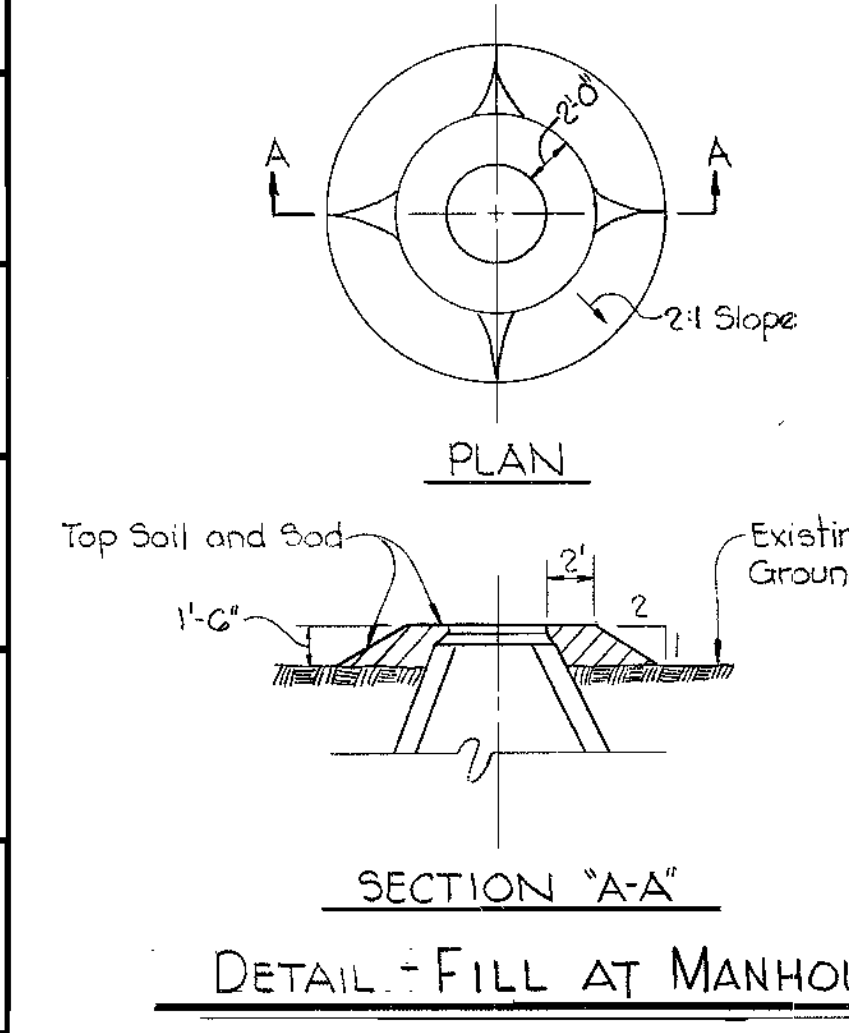
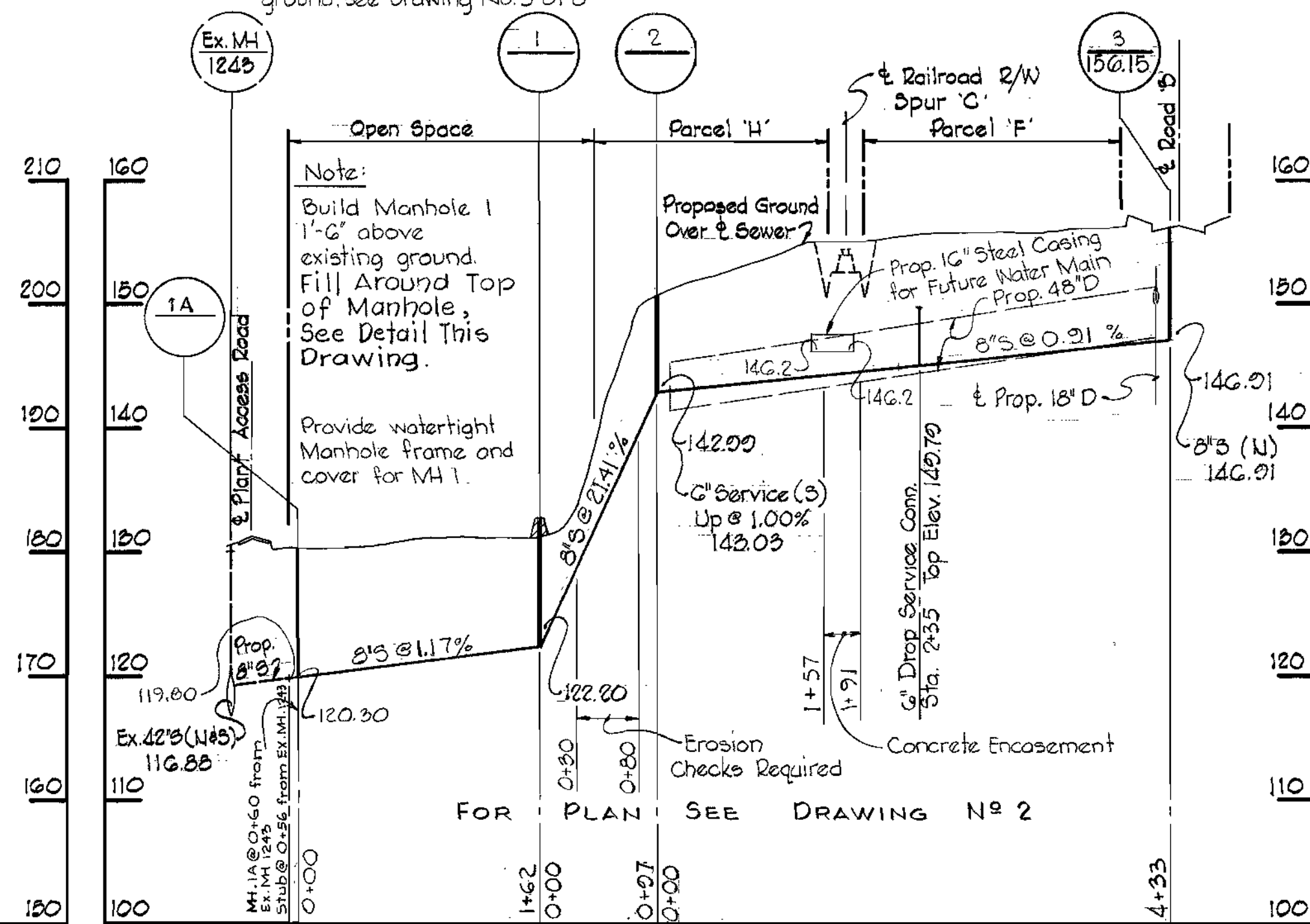
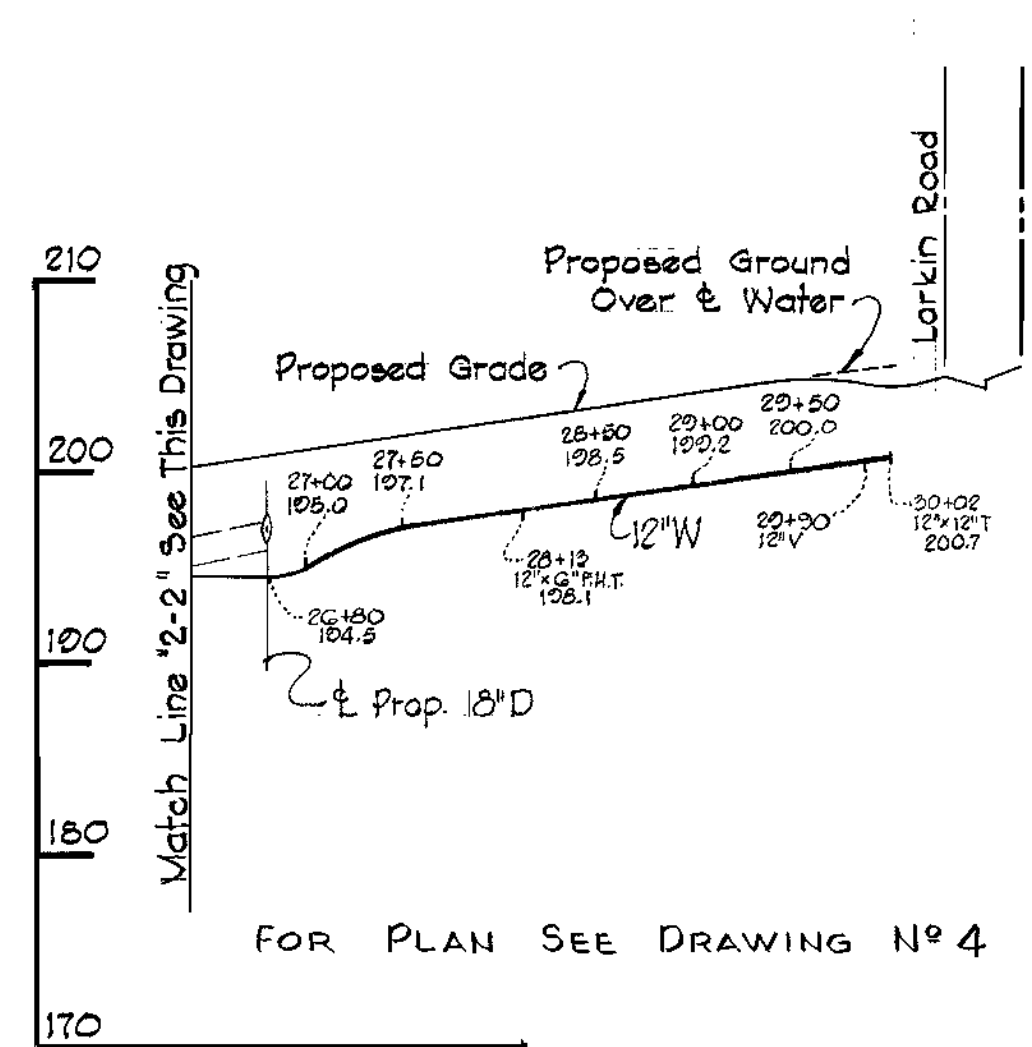
NOVEMBER 24, 1975

WS 660 W-5/6

GREENWOOD PLACE



GREENWOOD PLACE



CENTURY ENGINEERING, INC.
CONSULTING ENGINEERS - PLANNERS
TOWSON, MARYLAND 21204

DEPARTMENT OF PUBLIC WORKS
HOWARD COUNTY, MARYLAND
9-19-75
DATE

CONTRACT NO. 1660-D-W8S

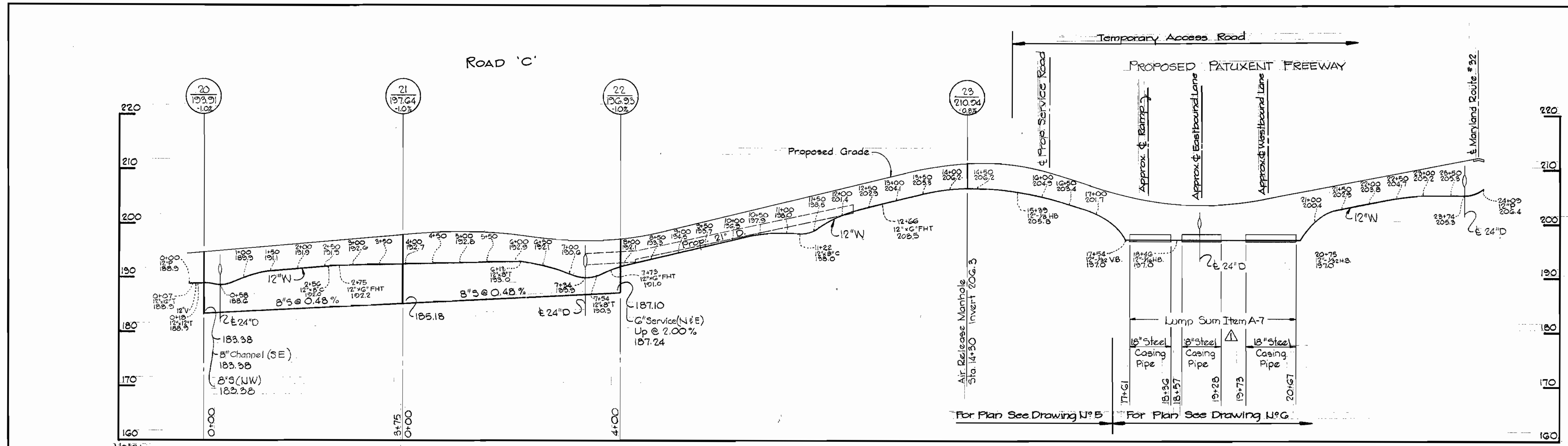
PROFILES OF
WATER AND SEWER MAINS

CORRIDOR
INDUSTRIAL PARK - SECTION 1 & 2
ELECTION DISTRICT GUILFORD NO. 6

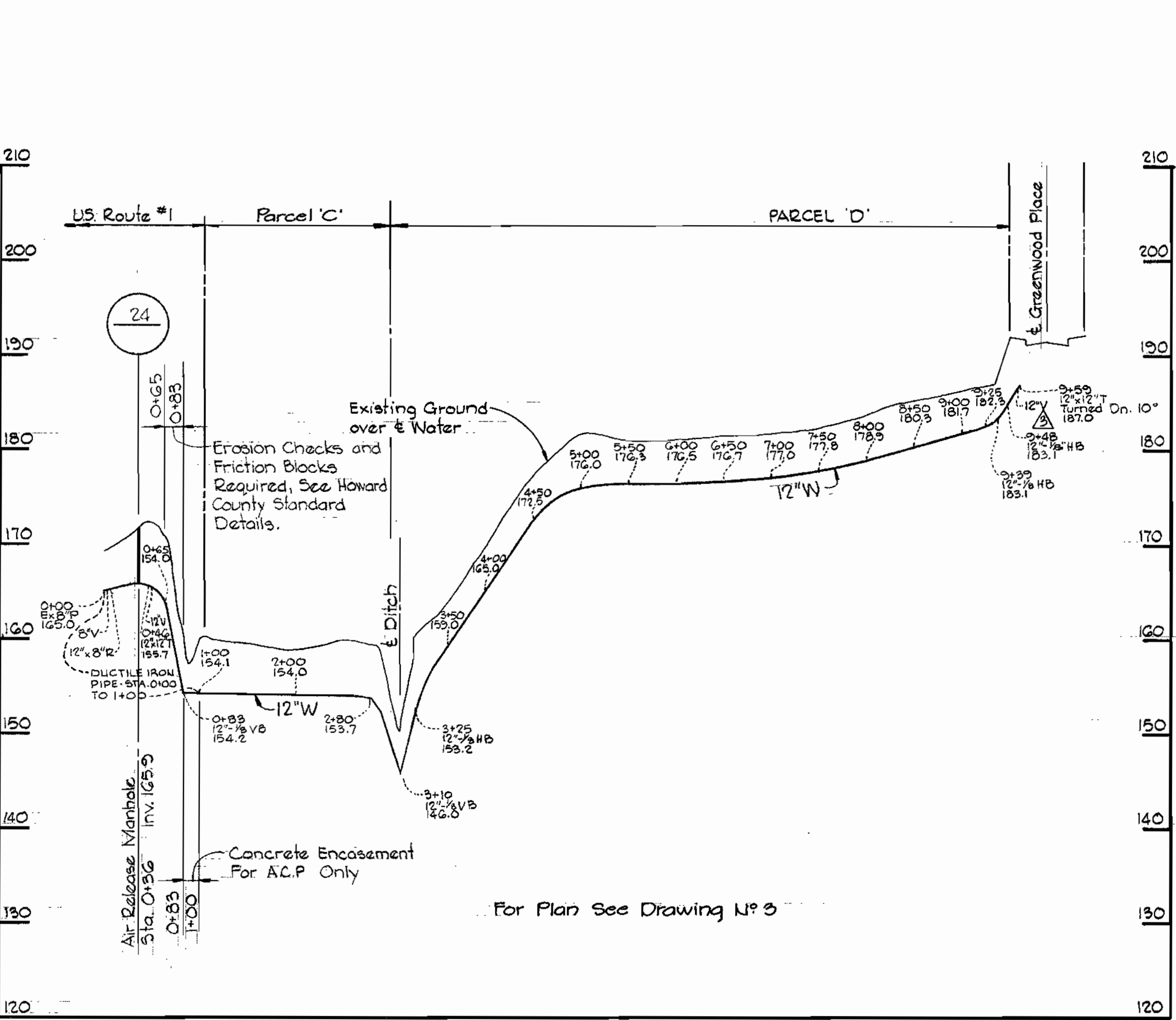
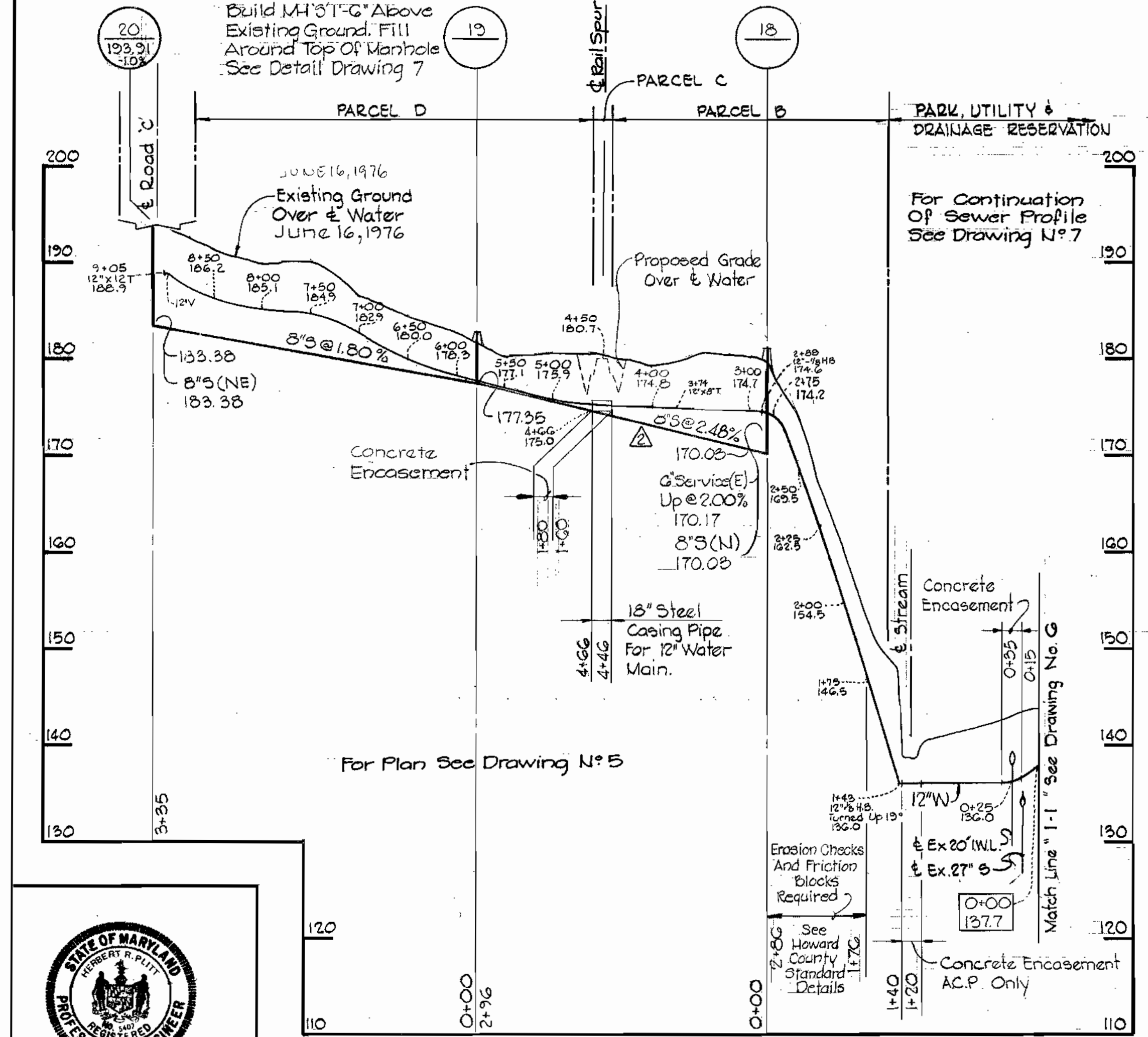
DRAWING NO. 7 OF 8
SCALE H:1"=100' V:1"=10'

No.	Date	Revision
2-26-76		Revised Sta. 17+87 to read 17+82
11-24-75		Revised Elev's to Sta's 12+0, 12+50 & 13+0, and Added 2'-12" @ Sta's 0+55 & 17+87, and Changed 2'-12" @ Sta's 10+67 & 16+05

WS 660 W-5/7



Note:
 Build 14"x18" Above Existing Ground. Fill Around Top Of Manhole. See Detail Drawing 7



▲	11-24-75	Added 12" V to Water Main Through Parcel 'D'
▲	11-24-75	Add Sewer Slope Between 44's 18' & 19'
▲	11-24-75	Changed 12" Casing Pipe to 18" Casing Pipe
No.	Date	Revision



CENTURY ENGINEERING, INC.
 CONSULTING ENGINEERS - PLANNERS
 TOWSON, MARYLAND 21204

DEPARTMENT OF PUBLIC WORKS
 HOWARD COUNTY, MARYLAND
 9-19-75
 DATE

CONTRACT NO. 2660-D-W8S

PROFILES OF
 WATER AND SEWER MAINS

CORRIDOR
 INDUSTRIAL PARK - SECTION 1 & 2
 ELECTION DISTRICT GUILFORD NO. 6

DRAWING NO. 8 OF 8
 SCALE H: 1"=100' V: 1"=10'

Corridor Industrial Park
 Sections 1 & 2
 Contract No 2660-D-W8S

AS-BUILT 8-30-76

NOVEMBER 24, 1975

WS 660 W-5/8