

LEGEND

- 6" Water
- 8" Water
- 8" Sewer
- ◆ Fire Hydrant

PROJECT NOS W-4-8068 & S-4-6066

ATHOLTON MANOR

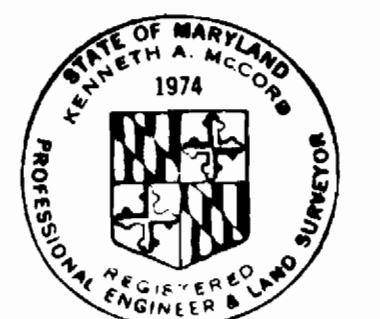
HOWARD COUNTY, MARYLAND

DEPARTMENT OF PUBLIC WORKS

QUANTITIES			
ITEM	QUANTITY	AS BUILT QUANTITY	MATERIAL/SUPPLIER
8" Sewer	7,430 L.F.	7413 L.F.	Johns Manville Cl. 2400 ACP
8" Water	1,200 L.F.	1201 L.F.	Johns Manville Cl. 150 ACP
6" Water	4,070 L.F.	4056 L.F.	Johns Manville Cl. 150 ACP
Fire Hydrants	10	9	M&H FU

'AS-BUILT'

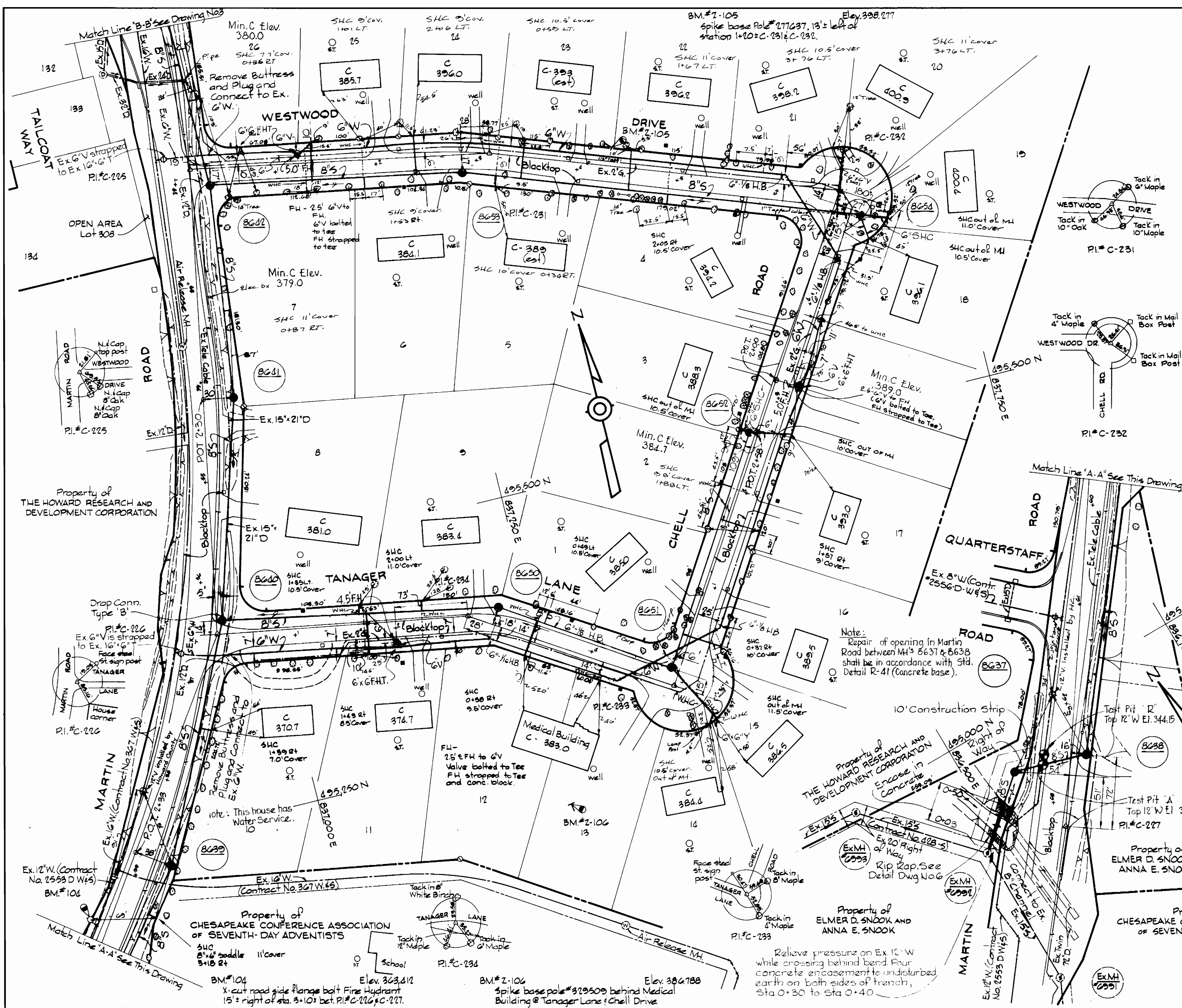
Diary #1-FB# 5922, Diary #2-FB# 5926, Stakeout FB# 5926



Kenneth A. McLeod

Atholton Manor
Project No. W-4-8068 & S-4-6066
Contract No. G59-W48

WHITMAN, REQUARDT & ASSOCIATES ENGINEERS 1304 ST. PAUL ST. BALTIMORE, MARYLAND	DEPARTMENT OF PUBLIC WORKS HOWARD COUNTY, MARYLAND <i>P. J. Reed</i> 2/27/76 DIRECTOR OF PUBLIC WORKS — DATE	<i>W. O. Reed</i> 1-23-76 CHIEF-BUREAU OF ENGINEERING — DATE	CONTRACT NO. G59 W&S	LOCATION MAP	ELECTION DISTRICT CLARKVILLE NO.5	DRAWING NO. 1 OF 6	SCALE 1" = 600'
--	--	---	---------------------------------	---------------------	--	---------------------------	----------------------------------



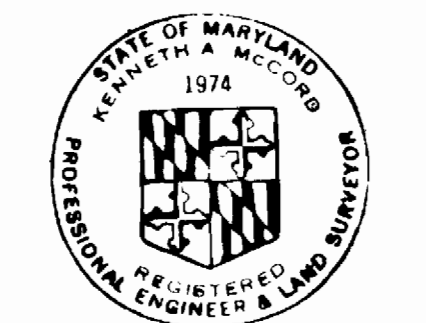
GENERAL NOTES

1. Approximate location of existing mains are shown. The Contractor shall take all necessary precautions to protect existing mains and services and maintain uninterrupted supply. Any damage incurred shall be repaired immediately.
2. All pipe elevations shown are invert elevations.
3. The Contractor shall locate existing utilities a minimum of two weeks in advance of construction operations in vicinity of utilities.
4. For all standard details see standards bound in specifications.
5. All horizontal and vertical controls are based on Maryland State Datum.
6. All manholes to be 4'-0" inside diameter.
7. The Contractor shall provide a joint in all sewer mains within 2'-0" of exterior manhole walls.
8. All water mains to have a minimum of 3 1/2' cover unless otherwise noted.
9. Block all fittings with concrete, see standards bound in specifications.
10. All fire hydrants shall be strapped and buttressed in accordance with standard details. Soil around the fire hydrant shall be compacted in accordance with Section 5-15 of the standard specifications.
11. Bury line elevations on fire hydrants shall be set to ± road elevation or as directed by the Engineer.
12. Clear all utilities by a minimum of 6'; clear all poles 2'-0" minimum or tunnel as required.
13. All waterhouse connections shall be 3/4", unless otherwise noted.
14. Water services shall be for inside meter settings.
15. Contractor shall notify the following utilities or agencies at least five (5) days before starting work shown on these plans:
 State Highway Administration - 531-5533
 Baltimore Gas and Electric Company:
 Underground Electric Distribution Engineering - "Damage Control" - 234-5691
 Underground Gas Distribution Engineering - 559-0100
 Chesapeake and Potomac Telephone Company - 727-9976
 American Telephone and Telegraph - Cable Location Division 301-393-3553
16. Trees are to be protected from damage to maximum extent. Trees located within the construction strips are not to be removed or damaged by the Contractor.
17. All water mains to be CIP, DIP or ACP unless otherwise noted.
18. All valves shall be strapped to tees where applicable in accordance with the Standard Details.
19. All sewer mains shall be CSPX, VCPX, or ACP Class 2400 unless otherwise noted.

Property of THE HOWARD RESEARCH AND DEVELOPMENT CORPORATION

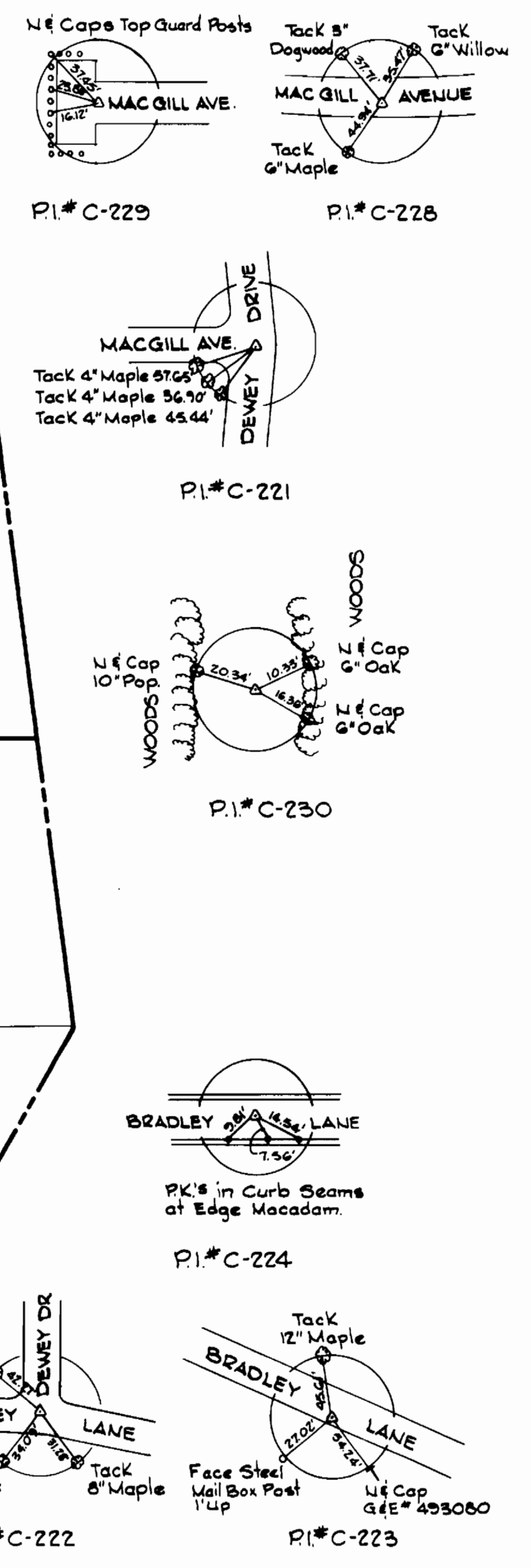
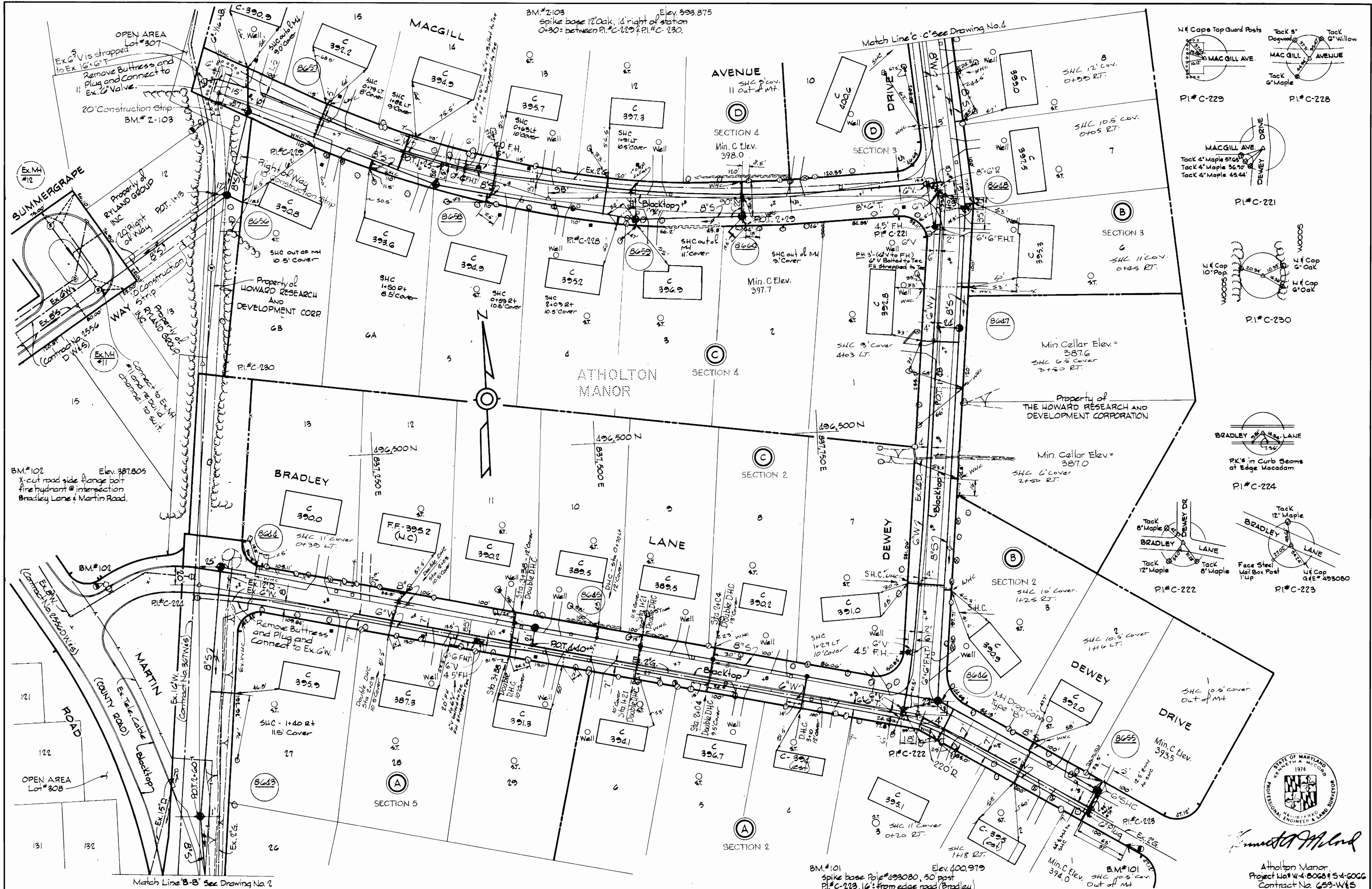
Note: Repair of opening in Martin Road between M's 8637 & 8638 shall be in accordance with Std. Detail R-41 (Concrete base).

Relieve pressure on Ex. 10" W while crossing behind bend. Pour concrete encasement to undisturbed earth on both sides of trench, Sta. 0+30 to Sta. 0+40



Kenneth A. McLeod
 Atholton Manor
 Project No. W-4-8068 #54-G066
 Contract No. G59 W45

WHITMAN, REQUARDT & ASSOCIATES ENGINEERS 1304 ST. PAUL ST. BALTIMORE, MARYLAND	DEPARTMENT OF PUBLIC WORKS HOWARD COUNTY, MARYLAND <i>P. J. Reed</i> 2/3/76 DIRECTOR OF PUBLIC WORKS - DATE	CONTRACT NO. 659 W&S <i>W. O. Falbert</i> 1-23-76 CHIEF BUREAU OF ENGINEERING - DATE	PLAN OF WATER & SEWER MAINS	ELECTION DISTRICT CLARKVILLE NO. 5	DRAWING NO. 2 OF 6 SCALE 1"=50' 494-(B) 495-(B)
--	---	---	--	---	--



Kenneth A. McCord

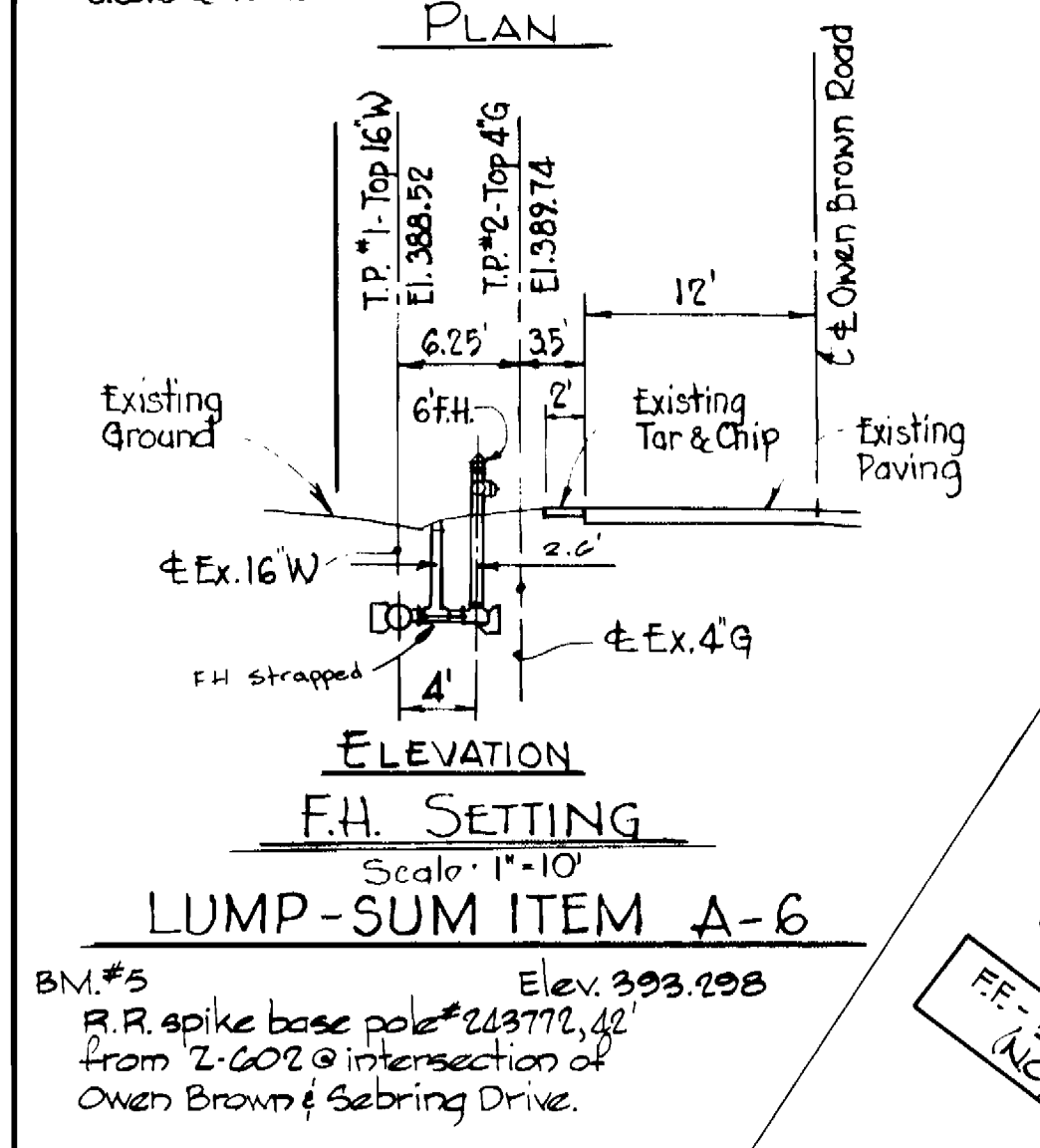
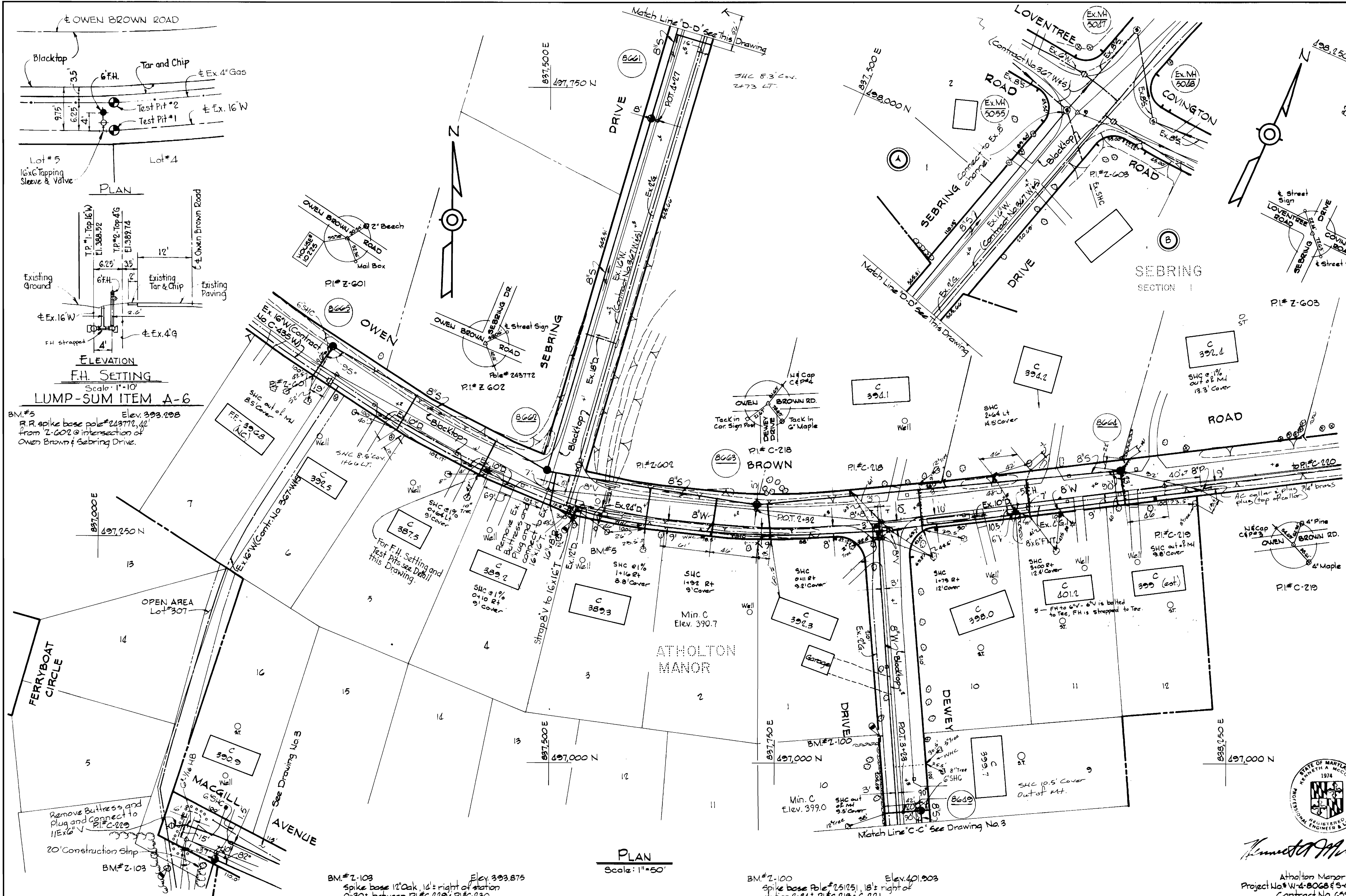
Atholton Manor
Project No. W-4-8068 & S-4-6066
Contract No. 659-W&S

WHITMAN, REQUARDT & ASSOCIATES ENGINEERS 1304 ST. PAUL ST. BALTIMORE, MARYLAND	DEPARTMENT OF PUBLIC WORKS HOWARD COUNTY, MARYLAND 2/3/76 DIRECTOR OF PUBLIC WORKS - DATE	CONTRACT NO. 659 W&S W.O. Albert 1-23-76 CHIEF BUREAU OF ENGINEERING - DATE	PLAN OF WATER & SEWER MAINS	ELECTION DISTRICT CLARKVILLE NO. 5	DRAWING NO. 3 OF 6 SCALE 1" = 50' 496 (8) 496 (7)
--	---	--	--	---	--

W. O. 7032-2

AS BUILT
 F.B. # 5755, 5766, 5757
 October 12, 1977

BRITNEY 1 44 510 18392



PLAN
Scale: 1"=50'

WHITMAN, REQUARDT & ASSOCIATES
ENGINEERS
1304 ST. PAUL ST.
BALTIMORE, MARYLAND

DEPARTMENT OF PUBLIC WORKS
HOWARD COUNTY, MARYLAND
CONTRACT NO. 659 W&S
2/23/76
2001/abot 1-23-76

CONTRACT NO. 659 W&S

PLAN OF
WATER & SEWER MAINS

ELECTION DISTRICT
CLARKSVILLE NO. 5

DRAWING NO. 4 OF 6
SCALE AS SHOWN
496-(8)
497-(8)

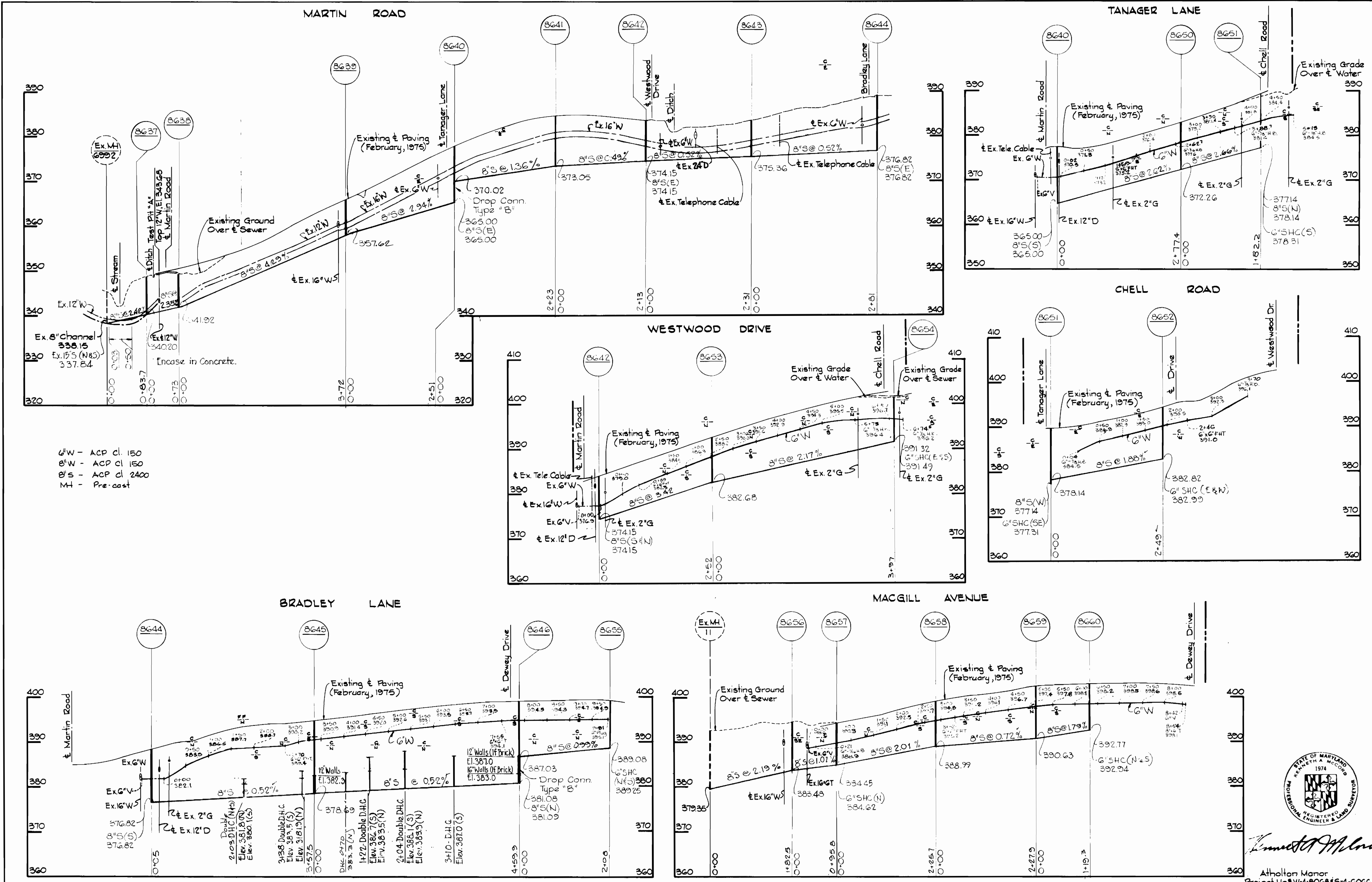


Atholton Manor
Project No. W-4-8068 & S-4-6066
Contract No. 659-W&S

October 12, 1977

DRAWING 44-510 106 12

W. O. 7032-2



6" W - ACP cl. 150
 8" W - ACP cl. 150
 8" S - ACP cl. 2400
 MH - Pre-cast

WHITMAN, REQUARDT & ASSOCIATES
 ENGINEERS
 1304 ST. PAUL ST.
 BALTIMORE, MARYLAND

DEPARTMENT OF PUBLIC WORKS
 HOWARD COUNTY, MARYLAND
 P. J. Rapp 2/27/76
 W. O. Fallick 1-23-76
 DIRECTOR OF PUBLIC WORKS - DATE CHIEF BUREAU OF ENGINEERING - DATE

CONTRACT NO. 659 W&S

PROFILES OF WATER & SEWER MAINS

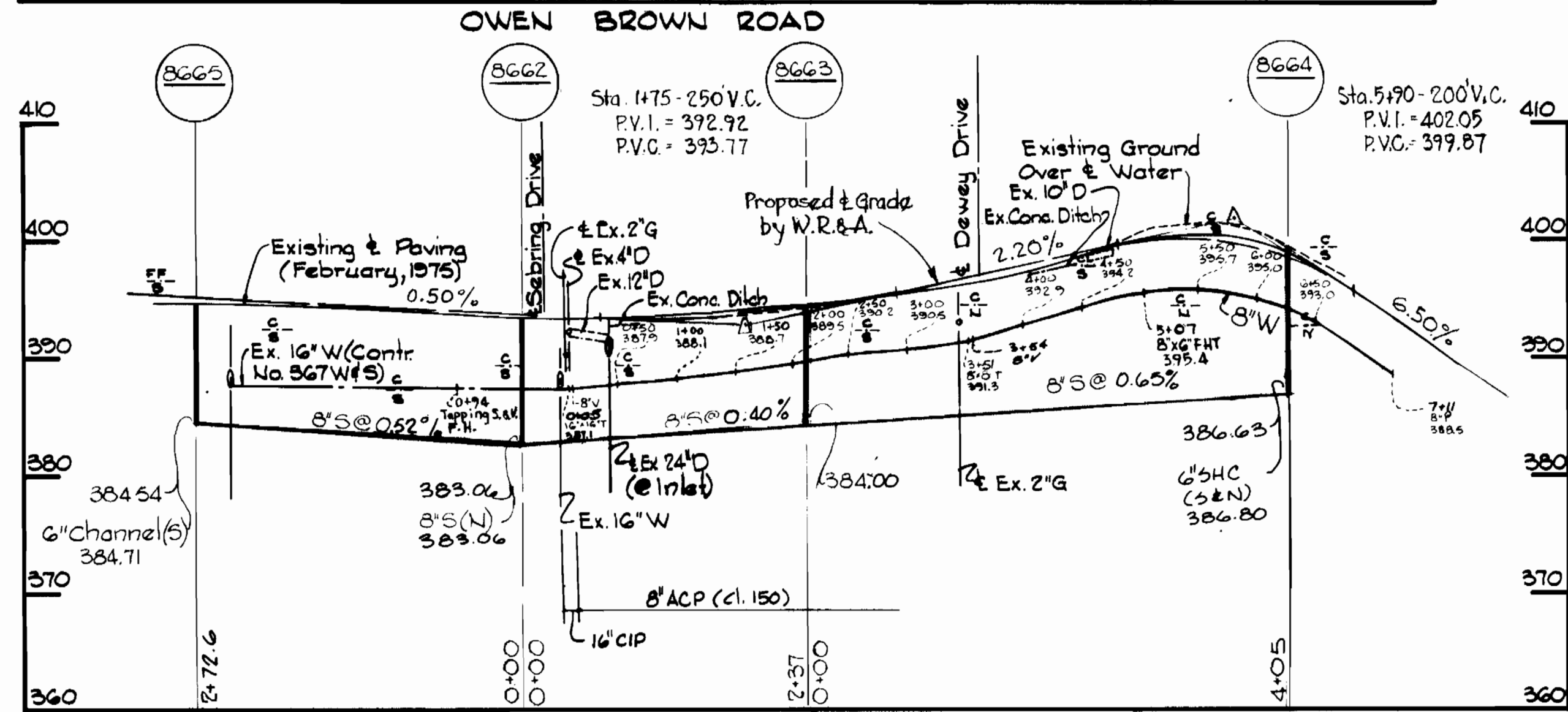
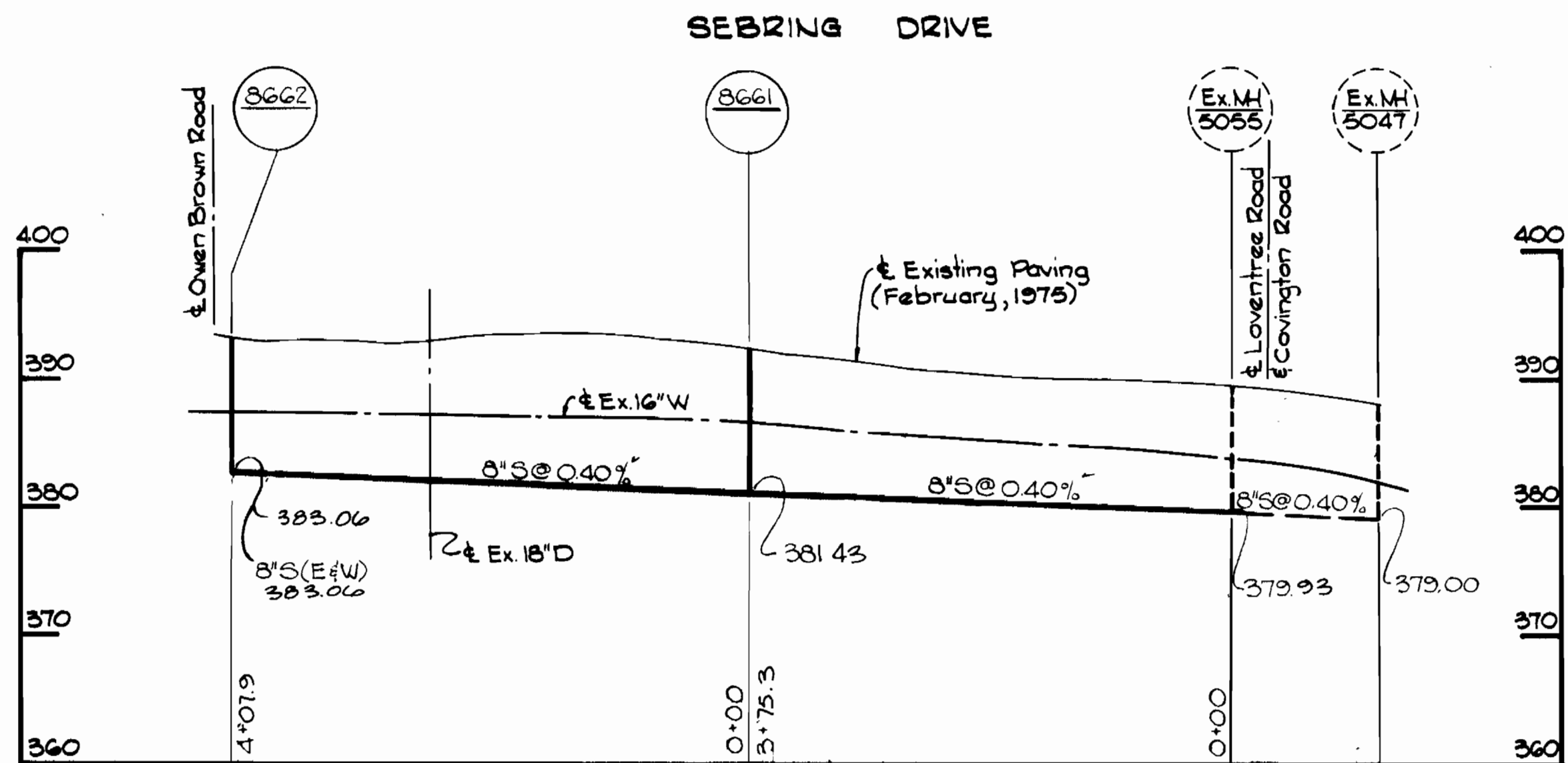
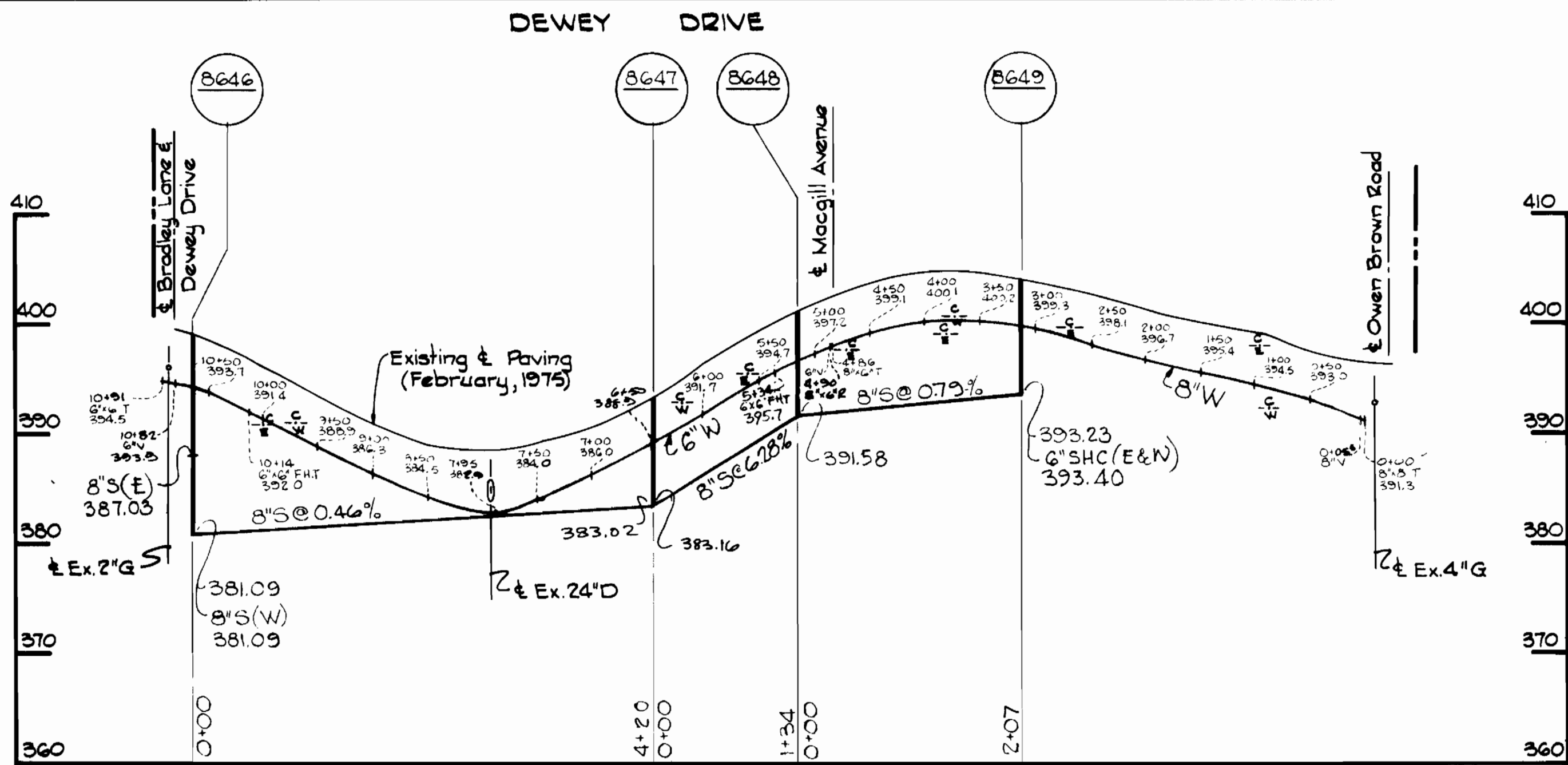
ELECTION DISTRICT CLARKSVILLE NO. 5

DRAWING NO. 5 OF 6 SCALE H:1"=100' V:1"=10'



Kenneth A. McCord
 Registered Professional Engineer & Land Surveyor

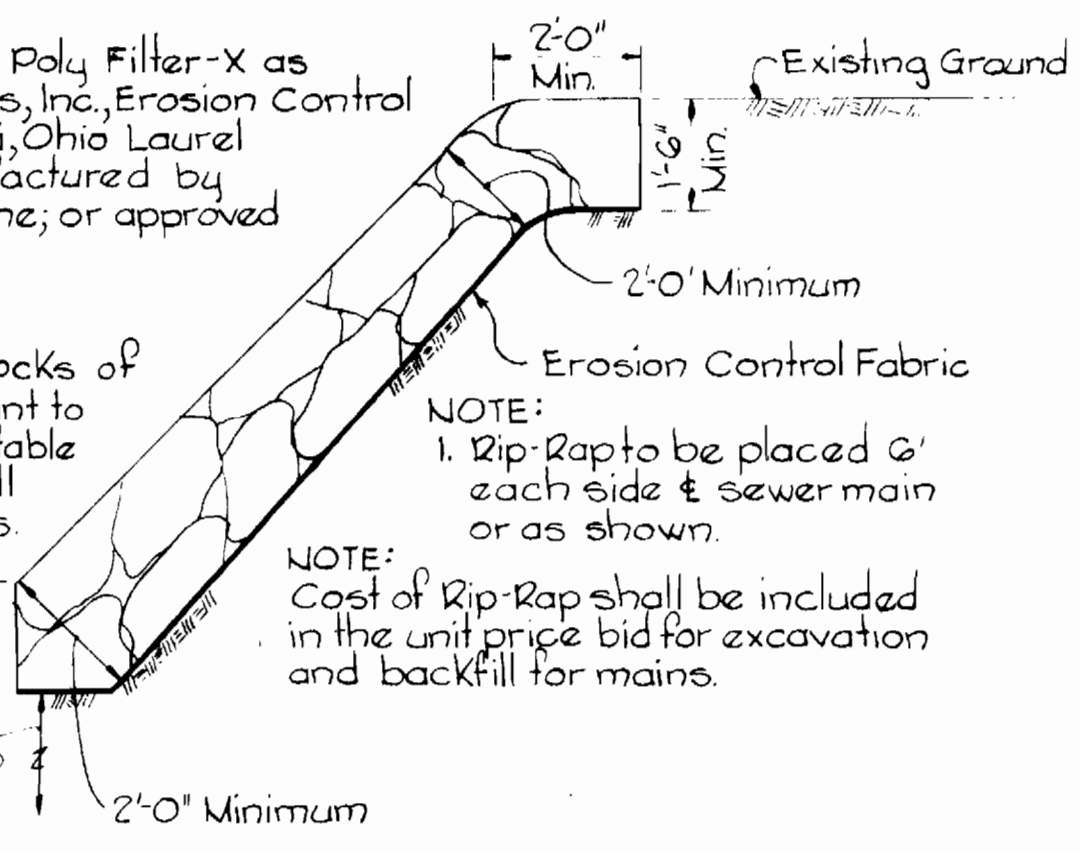
Atholton Manor
 Project No. W-4-2068-5-4-6066
 Contract No. 659 W&S



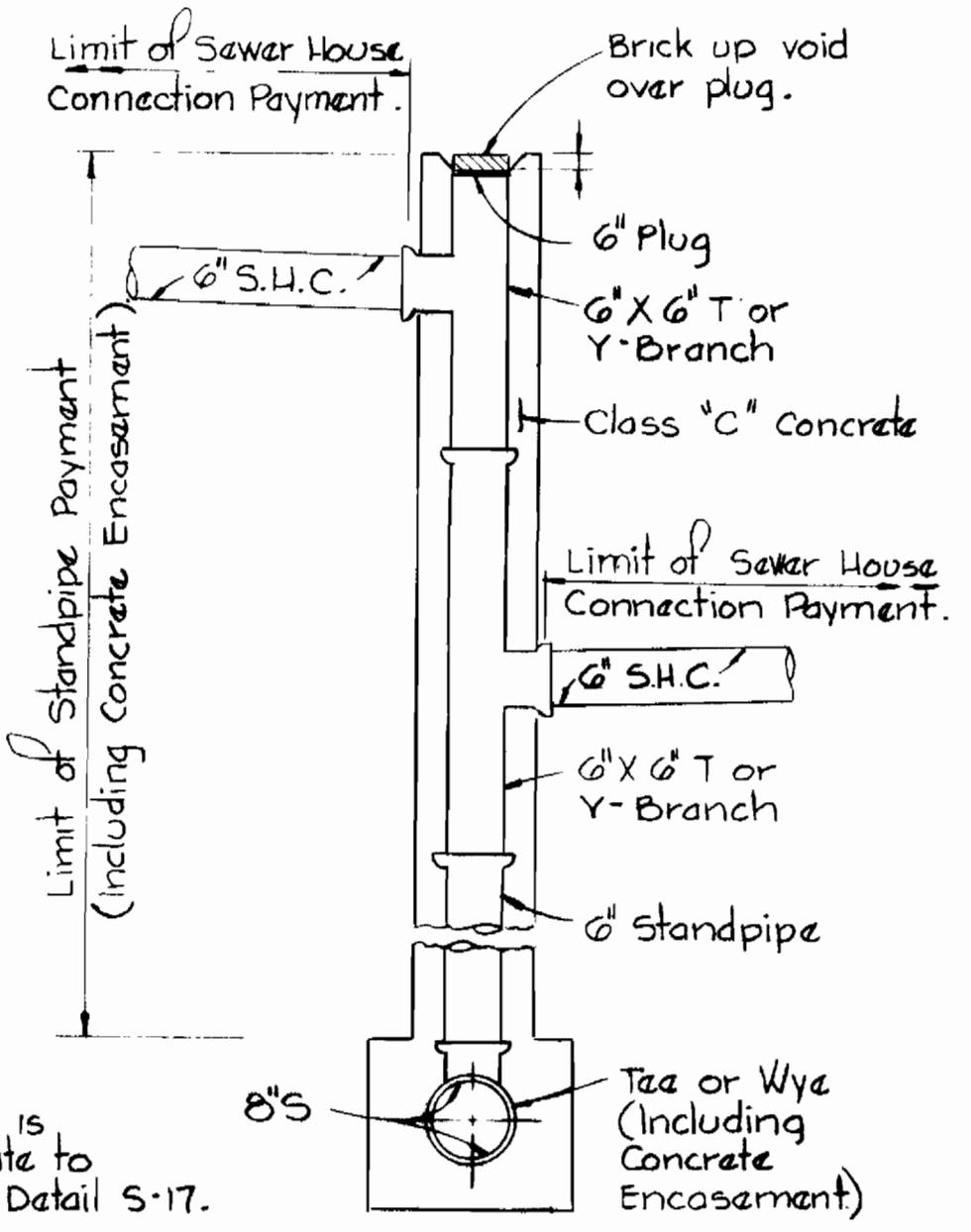
NOTE:
Erosion Control Fabric shall be Poly Filter-X as manufactured by Carthage Mills, Inc., Erosion Control Div., 124 W. 66th Street, Cincinnati, Ohio Laurel Erosion Control Cloth as manufactured by Laurel Plastics Inc., Madison, Maine, or approved equal.

Rip-Rap shall consist of dense rocks of random shapes and sizes, resistant to the action of air and water and suitable for bank protection. All rocks shall weigh a minimum of 150 pounds.

Maintain 1' minimum clearance between Rip-Rap and top of pipe.



RIP RAP DETAIL
Scale: 3/8" = 1'-0"



DETAIL OF DOUBLE DROP HOUSE CONNECTION
Scale: 1/2" = 1'-0"

16" W - CIP
8" W - ACP cl. 150
6" W - ACP cl. 150
8" S - ACP cl. 2400
MH - Precast



Kenneth A. McCord

Atholton Manor
Project No. W-4-8068 & S-4-6066
Contract No. 659 W/S

WHITMAN, REQUARDT & ASSOCIATES ENGINEERS 1304 ST. PAUL ST. BALTIMORE, MARYLAND	DEPARTMENT OF PUBLIC WORKS HOWARD COUNTY, MARYLAND <i>A. J. Ragan</i> 2/13/76 DIRECTOR OF PUBLIC WORKS - DATE	CONTRACT NO. 659 W/S <i>W. O. Falbert</i> 1-23-76 CHIEF BUREAU OF ENGINEERING - DATE	PROFILES AND DETAIL WATER & SEWER MAINS	ELECTION DISTRICT CLARKSVILLE NO. 5	DRAWING NO. 6	SCALE AS SHOWN
					OF 6	