

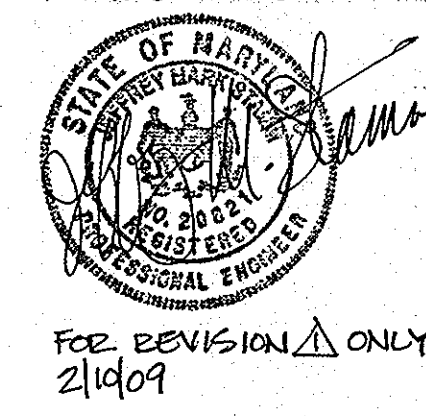
BM#1 ELEV. 412.08
 NAIL IN G.E. POLE #228205, 100 FT.
 W. OF C. STA. 4+20 RIDGE ROAD

BM#2 ELEV. 414.05
 P.K. NAIL IN ASPHALT OPPOSITE
 S. SIDE BRIDGE ABUTMENT ON
 RIDGE ROAD.

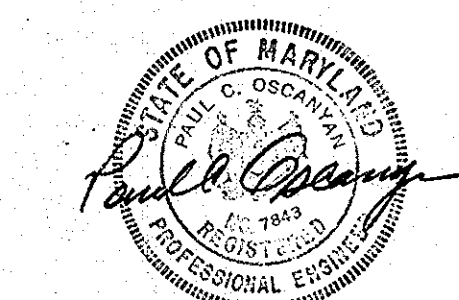
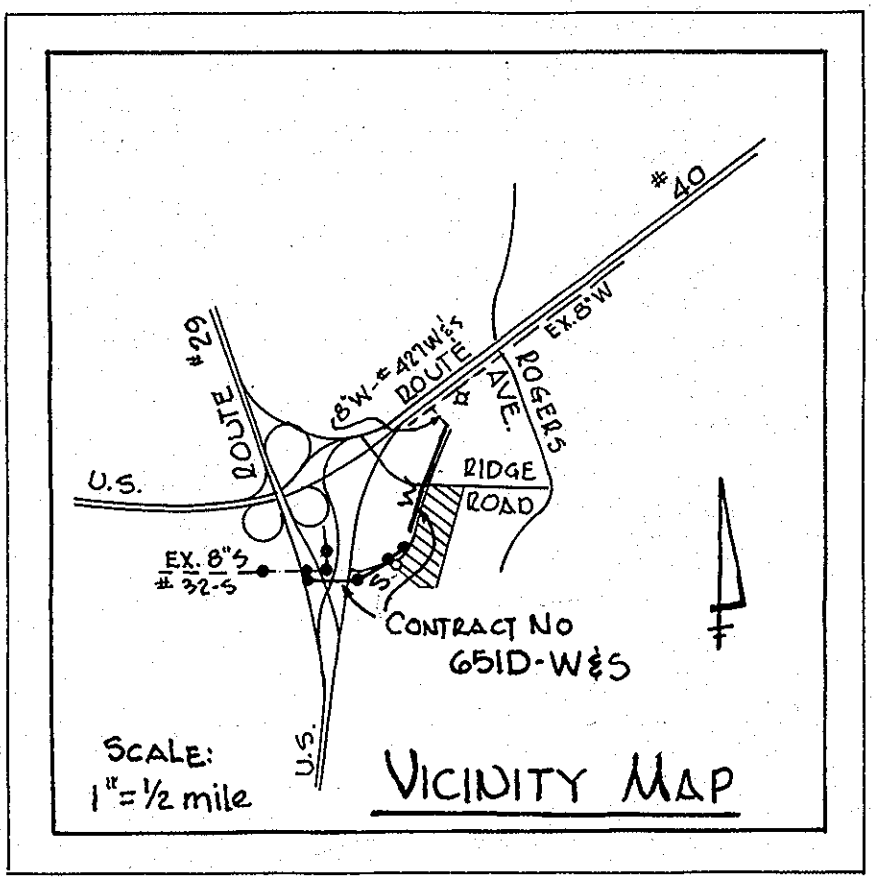
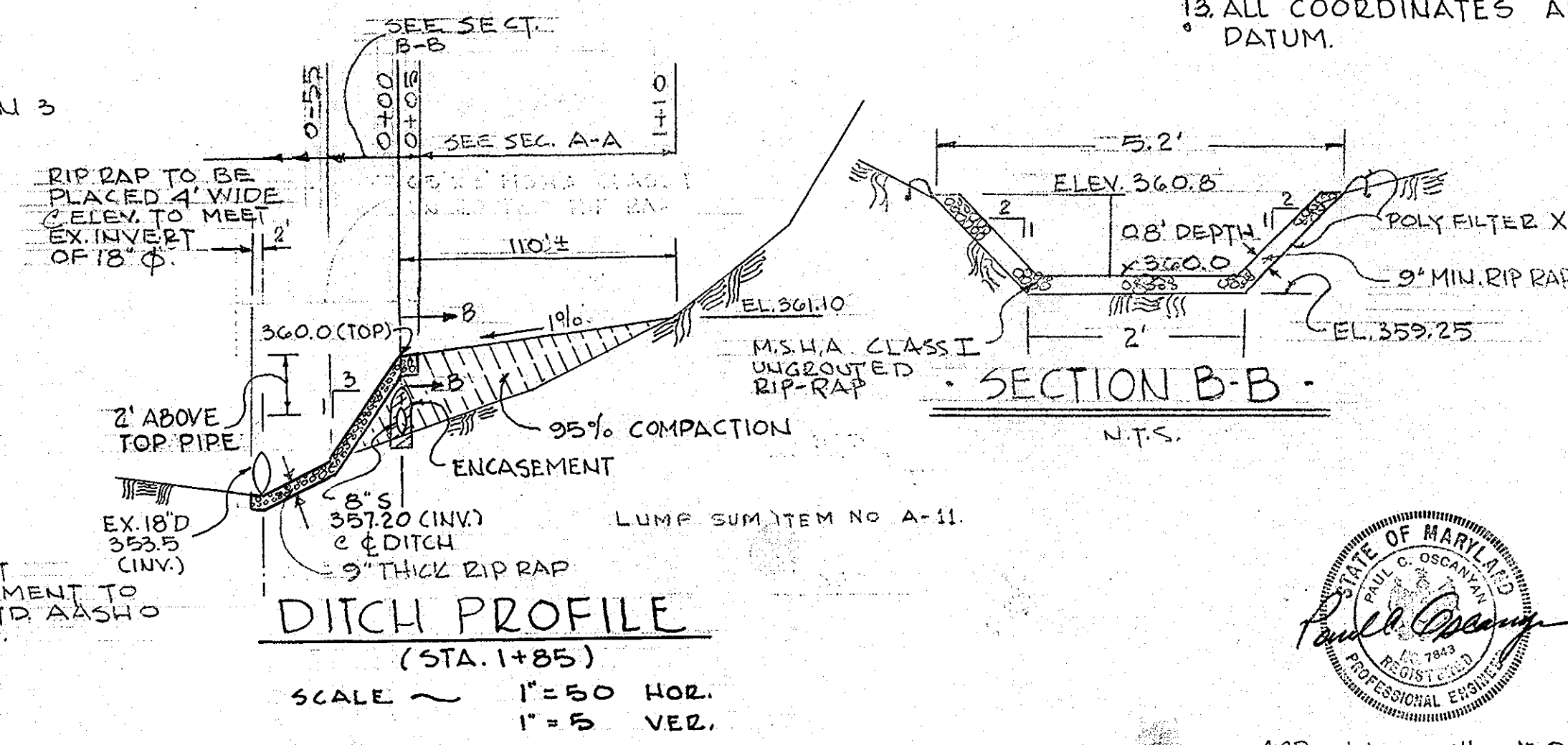
BM#3 ELEV. 373.85
 TOP GUARD RAIL POST, E. U.S. ROUTE
 29 ON RAMP 'H' & STA. 150+15.

GENERAL NOTES

- APPROXIMATE LOCATION OF EXISTING MAINS ARE SHOWN. THE CONTRACTOR SHALL TAKE ALL NECESSARY PRECAUTIONS TO PROTECT EXISTING MAINS AND SERVICES AND MAINTAIN UNINTERRUPTED SUPPLY. ANY DAMAGE INCURRED SHALL BE REPAIRED IMMEDIATELY.
- ALL PIPE ELEVATIONS SHOWN ARE INVERT ELEVATIONS.
- THE CONTRACTOR SHALL LOCATE EXISTING UTILITIES A MINIMUM OF TWO WEEKS IN ADVANCE OF CONSTRUCTION OPERATIONS IN VICINITY OF UTILITIES.
- FOR ALL STANDARD DETAILS SEE STANDARDS BOUND IN SPECIFICATIONS.
- ALL WATER MAINS SHALL HAVE A MINIMUM OF 3 1/2' COVER.
- BLOCK ALL FITTINGS WITH CONCRETE, SEE STANDARDS BOUND IN SPECIFICATIONS.
- BURY LINE ELEVATIONS ON FIRE HYDRANTS SHALL BE SET TO THE ELEVATIONS SHOWN ON THE DRAWINGS.
- COST OF STRAPPING FIRE HYDRANTS AND VALVES TO BE INCLUDED IN THE UNIT PRICE BID FOR FURNISHING AND INSTALLING FIRE HYDRANTS.
- ALL FIRE HYDRANTS SHALL BE STRAPPED TO THE TEE AND SHALL BE BUTTRESSED WITH CONCRETE IN ACCORDANCE WITH STANDARD DETAILS.
- CLEAR ALL UTILITIES BY A MINIMUM OF 6"; CLEAR ALL POLES BY 2'-0" MINIMUM OR TUNNEL, AS REQUIRED.
- ALL MANHOLES SHALL BE 4'-0" INSIDE DIAMETER.
- THE CONTRACTOR SHALL PROVIDE A PIPE JOINT IN ALL SEWER MAINS WITHIN 2'-0" OF EXTERIOR MANHOLE WALLS.
- ALL HORIZONTAL AND VERTICAL CURVES ARE BASED ON HORIZONTAL CURVE DATUM.
- ALL COORDINATES ARE BASED ON MARYLAND STATE DATUM.



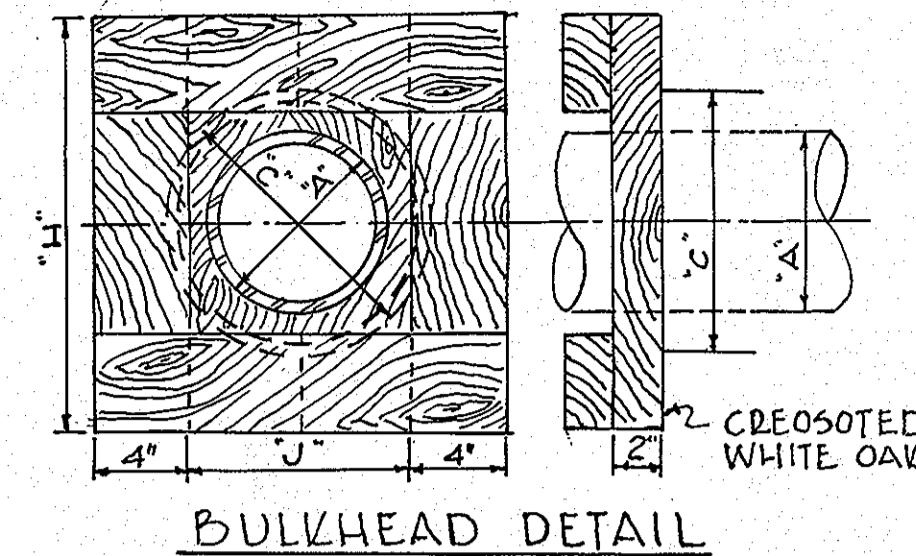
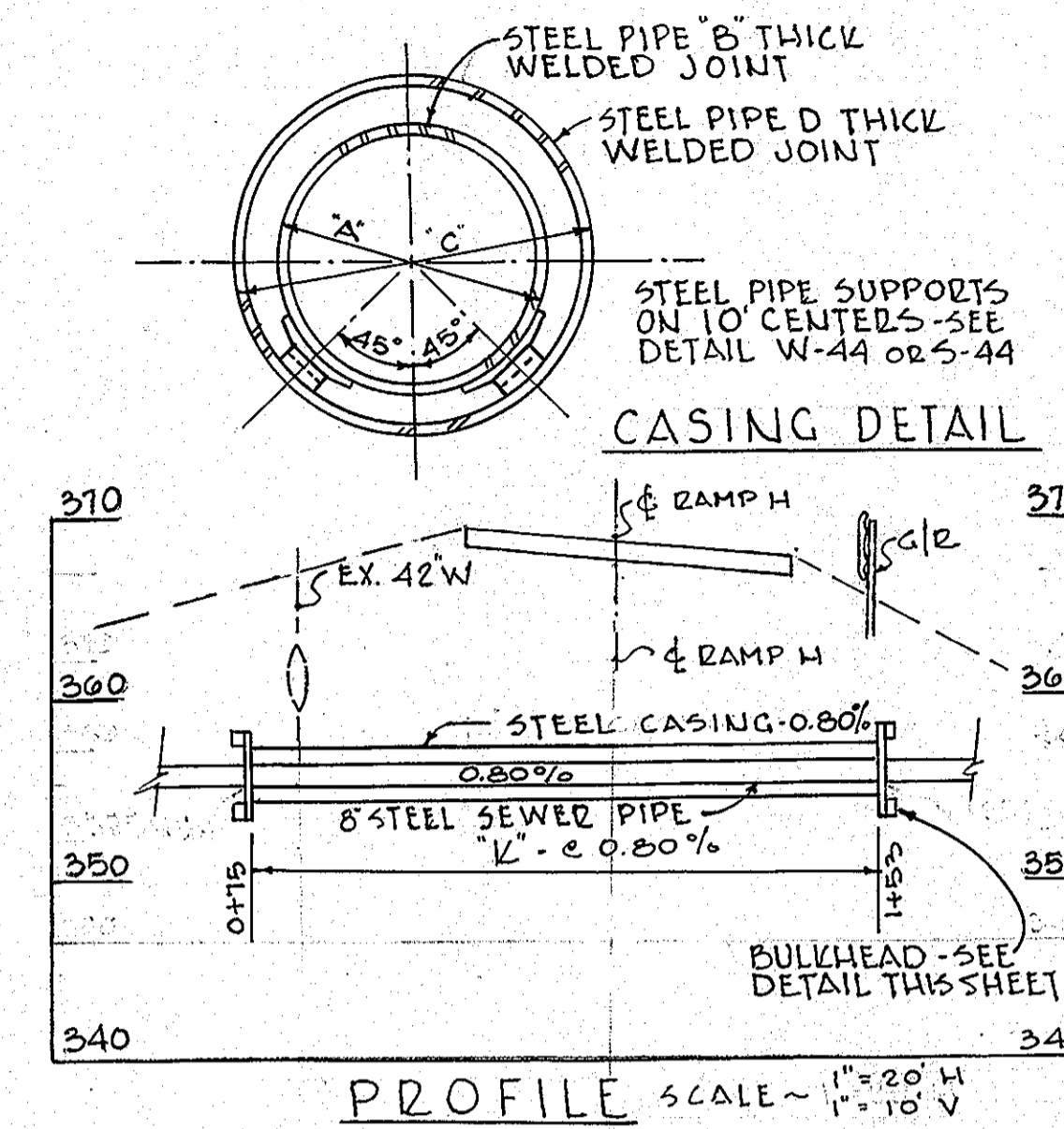
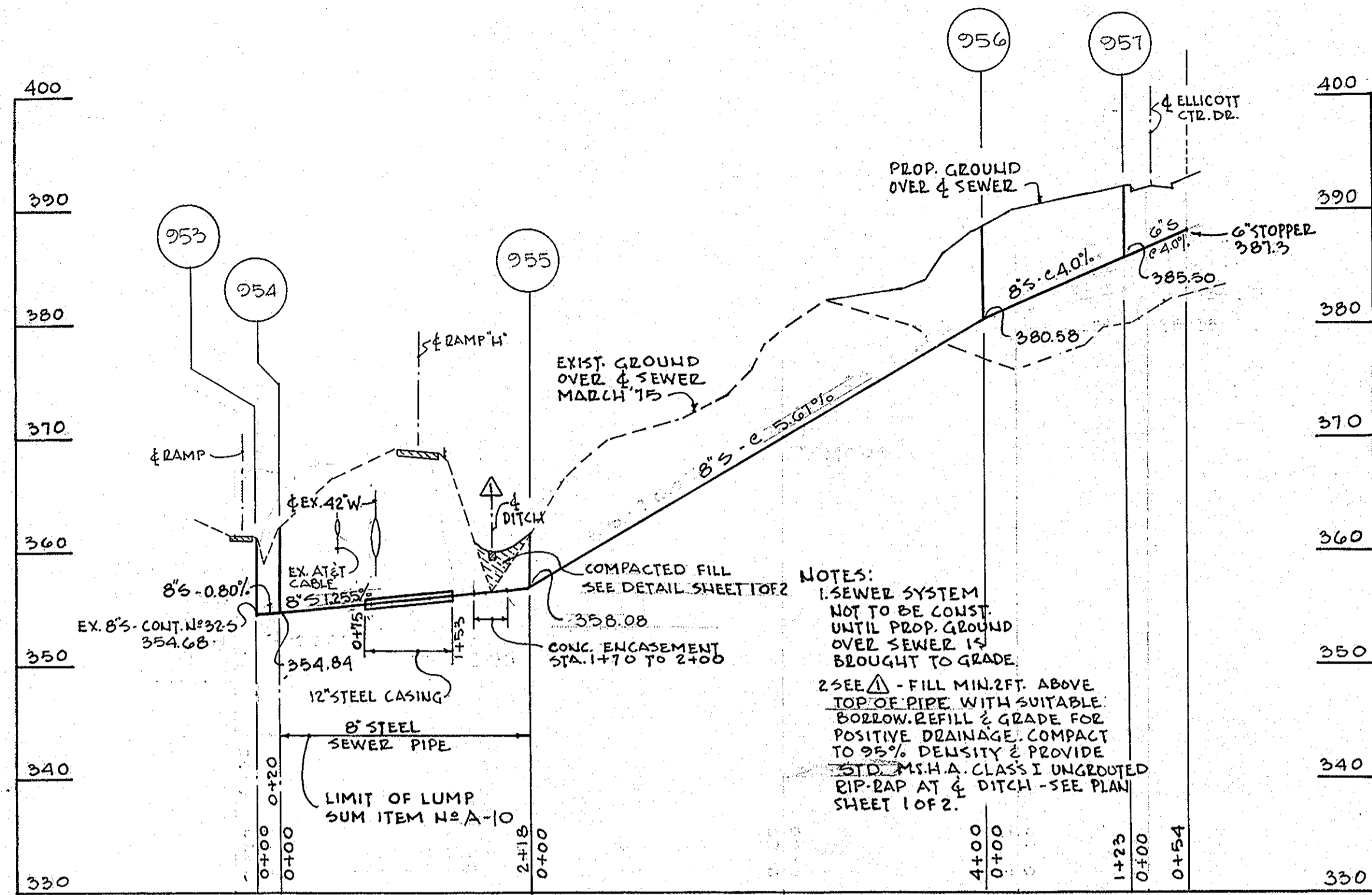
QUANTITIES	
ITEM	QUANTITY
8" SEWER	815
12" WATER	1428
MANHOLES	5
FIRE HYDRANTS	3



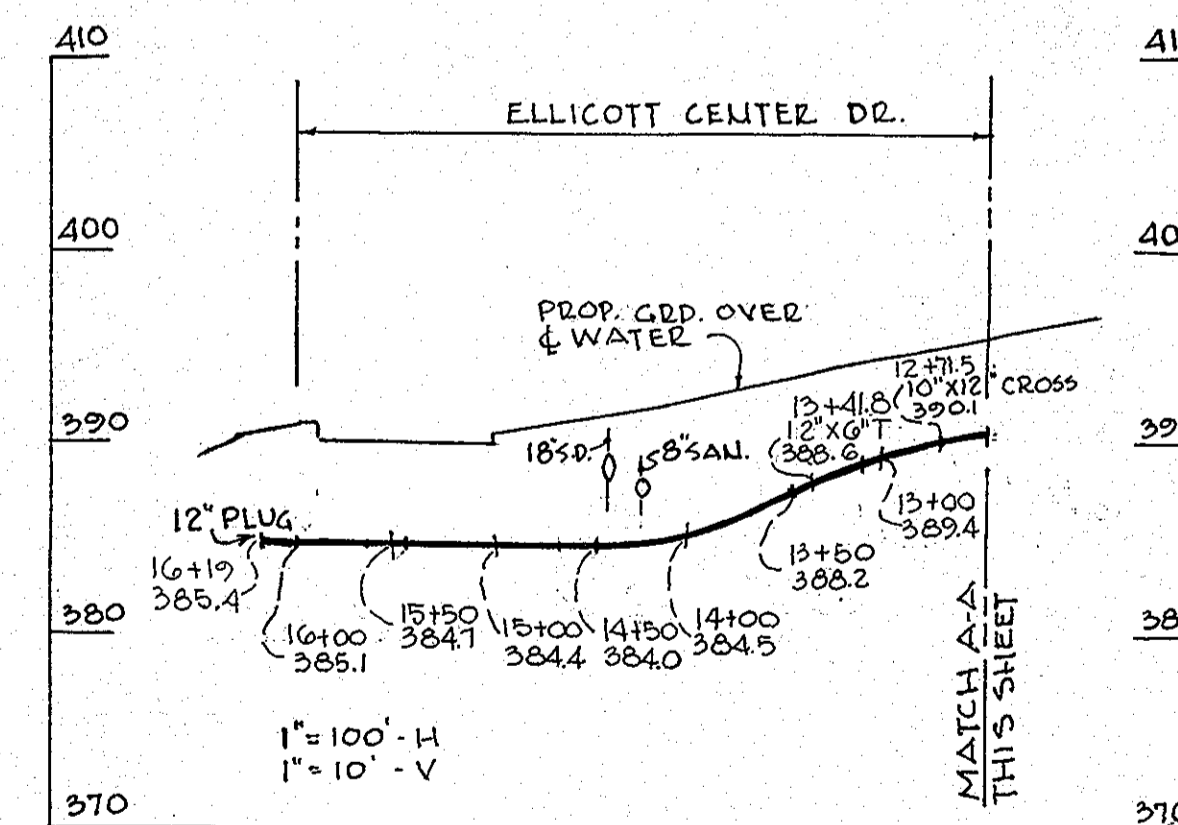
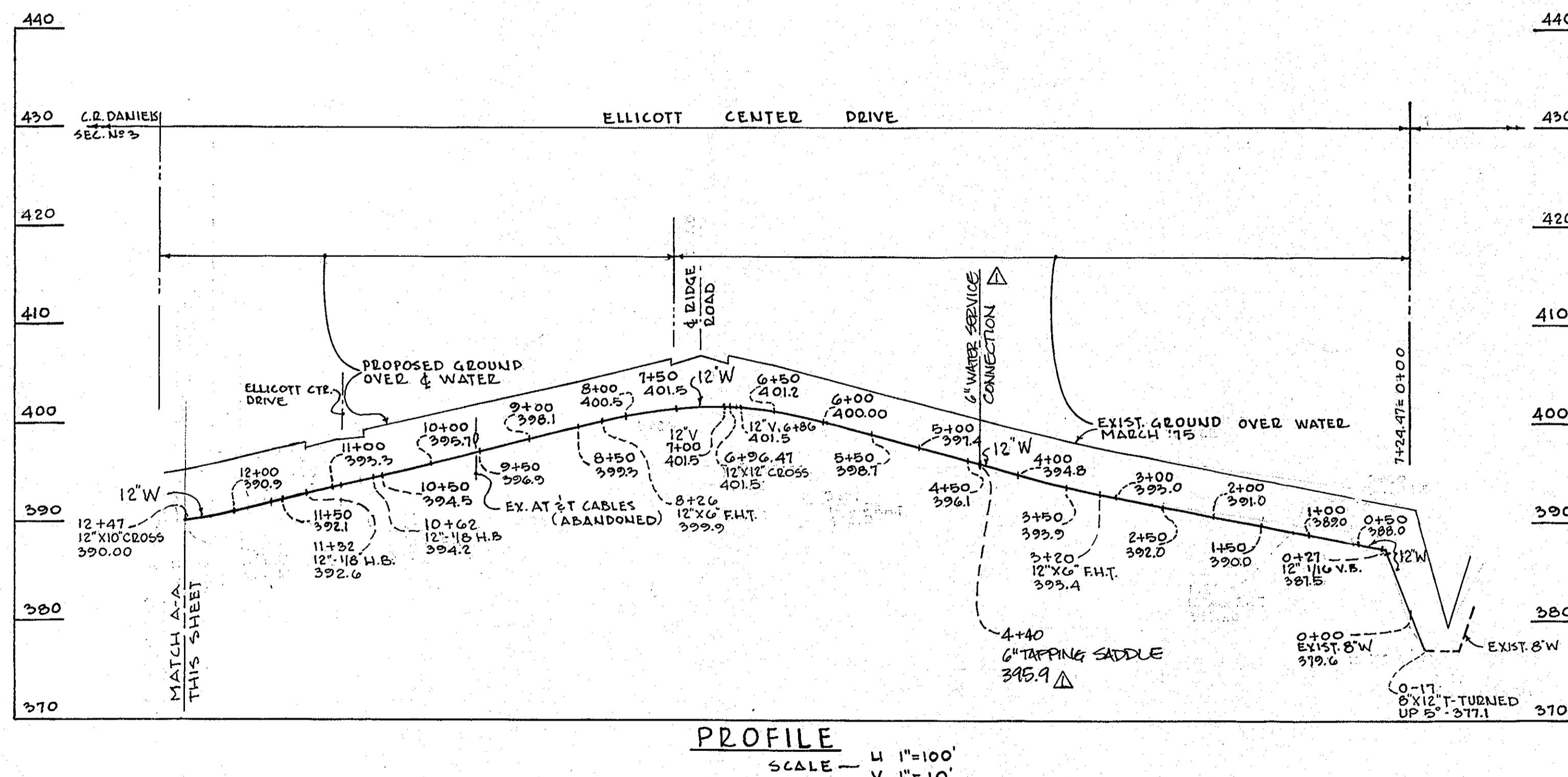
ACP Johnmanville 150 Class

WS 651-W-5/1

	DEPARTMENT OF PUBLIC WORKS HOWARD COUNTY, MARYLAND DATE: 5-9-75 CHIEF-BUREAU OF ENGINEERING: <i>W. O. Gilbert</i>	CONTRACT NO. 651D-W-5	PLAN OF WATER & SEWER MAINS	ELLICOTT CENTER SECTION 3 PARCEL 'A' SECOND ELECTION DISTRICT	DRAWING NO. 1 OF 2 SCALE 1" = 50'
	AS-BUILT NOV 30, 1975 APRIL 1, 1975				



TYPE	SIZE	DIMENSIONS IN INCHES										FEET
		A	B	C	D	E	F	G	H	J	K	
SAN.	8"	8 5/8	0.5	12 3/4	1/2	0.21	5	1 9/16	1 9/16	1 1/4	11 1/4	7 8



REVISION Δ 2/10/09
ADDED 6" WATER SERVICE CONNECTION

FOR REVISION Δ ONLY.
2/10/09



1500
1500
1500

DEPARTMENT OF PUBLIC WORKS
HOWARD COUNTY, MARYLAND
5-9-75
DATE

W. O. Gilbert
CHIEF BUREAU OF ENGINEERING

CONTRACT NO. 651D-WES

PROFILE OF
WATER & SEWER MAINS

ELLICOTT CENTER SECTION 3
PARCEL 'A'
SECOND ELECTION DISTRICT

DRAWING NO. 2 OF 2
SCALE 1"=50'

WS 651 W-S/2