

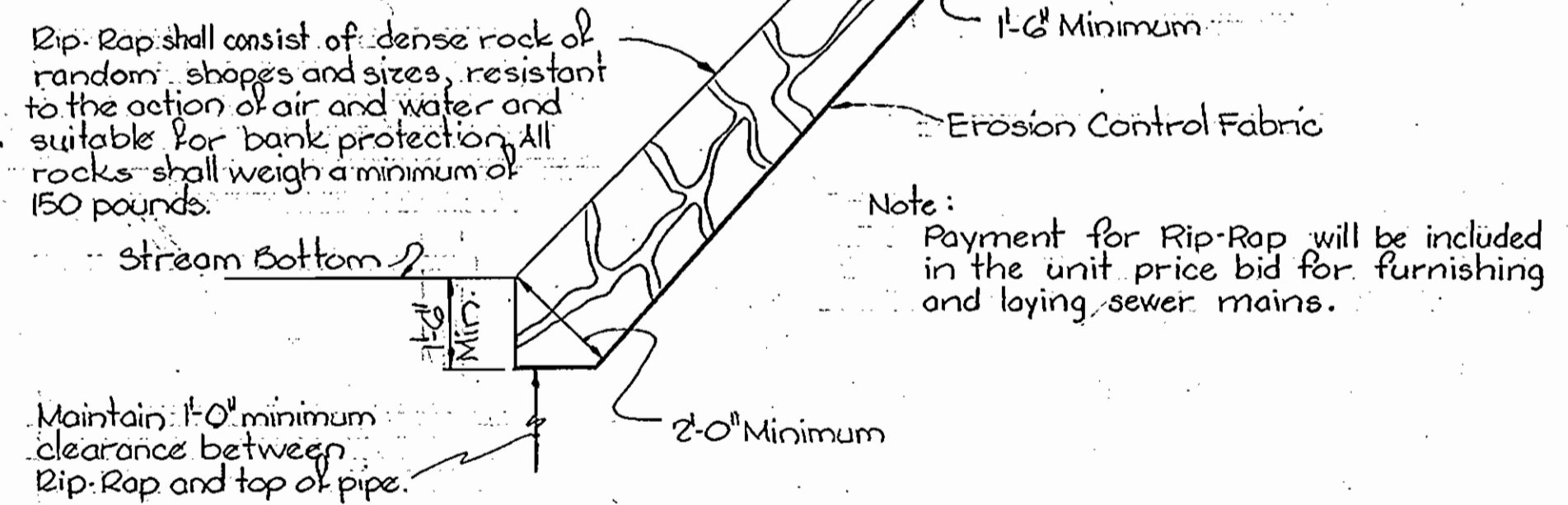
VICINITY MAP  
Scale: 1"=2,000'

**GENERAL NOTES**

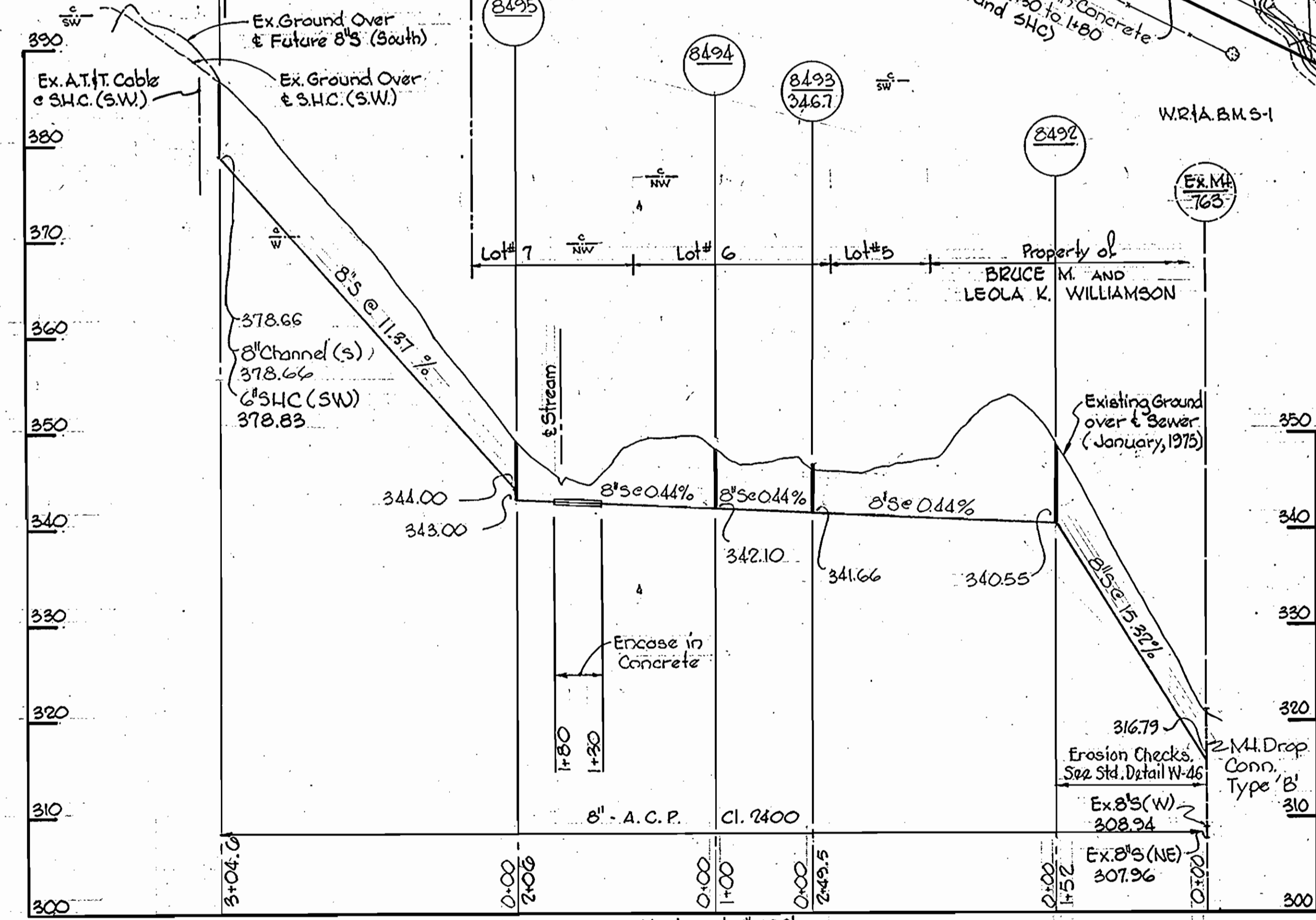
1. Approximate location of existing mains are shown. The Contractor shall take all necessary precautions to protect existing mains and services and maintain uninterrupted supply. Any damage incurred shall be repaired immediately.
2. All pipe elevations shown are invert elevations.
3. The Contractor shall locate existing utilities a minimum of two weeks in advance of construction operations in vicinity of proposed utilities.
4. For all standard details see Standards bound in Specifications.
5. Clear all utilities by a minimum of 6'; clear all poles by 2'-0" minimum or tunnel as required.
6. The Contractor shall provide a joint in all sewer mains within 2'-0" of exterior manhole walls.
7. All manholes shall be 4'-0" inside diameter except where noted.
8. All Horizontal and Vertical controls are based on Maryland State Datum.
9. Trees are to be protected from damage to maximum extent. Trees located within the Construction Strip are not to be removed or damaged by the contractor.
10. All sewer mains shall be C.S.P.X., V.C.P.X., or A.C.P. Class 2400 unless otherwise noted.

QUANTITIES	AS BUILT
8" Sewer	1,010 LF. 1015 LF.

- Notes**
1. Erosion Control Fabric shall be Poly Filter-X as manufactured by Carthage Mills Inc., Erosion Control Division, 124 W. 66th Street, Cincinnati, Ohio; Laurel Erosion Control Cloth as manufactured by Laurel Plastics Inc., Madison, Maine, or approved equal.
  2. Rip-Rap shall be placed 6' minimum each side of 8" Sewer.

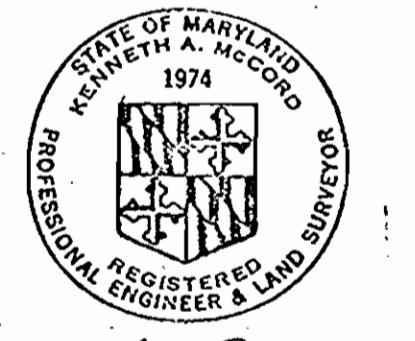


RIP-RAP DETAIL  
Scale: 3/8"=1'-0"



PROFILE  
Scale: Horizontal: 1"=100'  
Vertical: 1"=10'

<b>WHITMAN, REQUARDT &amp; ASSOCIATES</b> ENGINEERS 1304 ST. PAUL ST. BALTIMORE, MARYLAND	<b>DEPARTMENT OF PUBLIC WORKS</b> HOWARD COUNTY, MARYLAND 11-4-77 DATE	<b>CONTRACT NO. 646-S</b> <b>PROJECT NO. S-5-6074</b>	<b>PLAN, PROFILE AND DETAIL</b> <b>OF SEWER MAIN</b>	<b>ELECTION DISTRICT</b> <b>ELLCOTT CITY NO. 2</b>	<b>DRAWING NO. 1</b> <b>OF 1</b>	<b>SCALE AS SHOWN</b> 522-2 521-2
					AS BUILT October 11, 1977	FB# 5738



Manordale Sewer  
Project No. S-5-6074  
Contract No. 646-S

WS 646 S/1