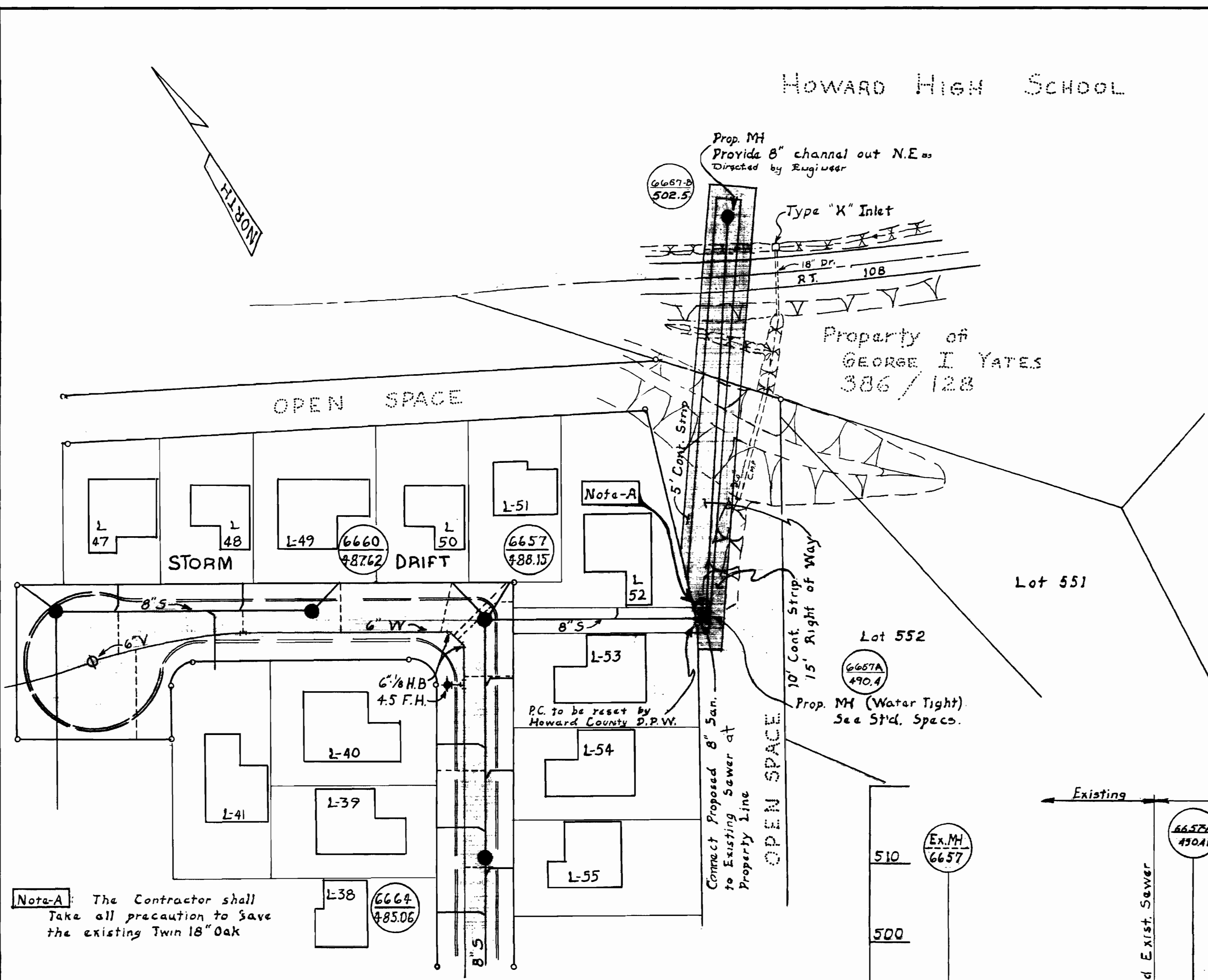


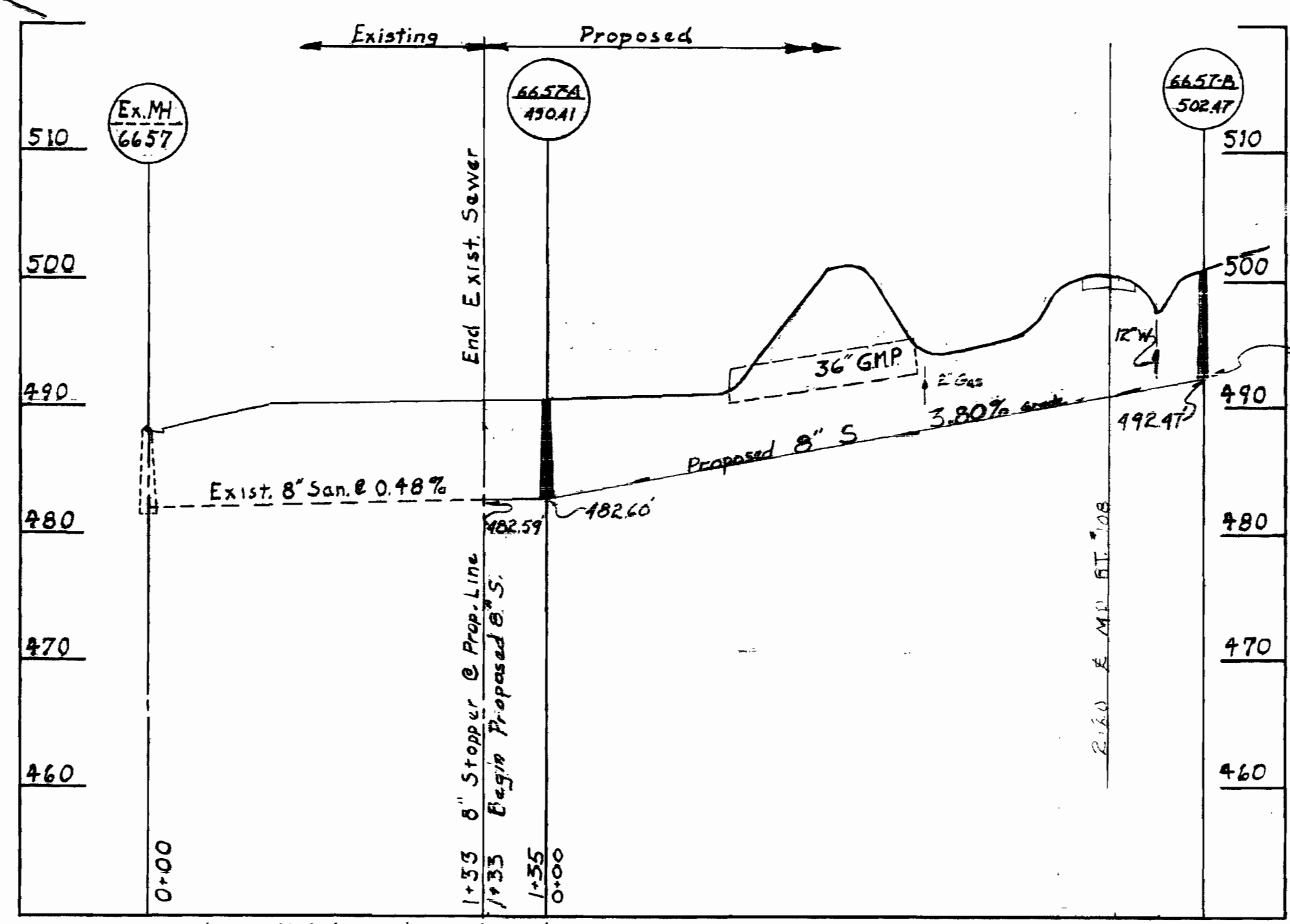
VICINITY MAP
Scale: 1"=600'

GENERAL NOTES

1. Approximate location of existing mains are shown. The Contractor shall take all necessary precaution to protect existing mains and services and maintain uninterrupted. Any damage incurred shall be repaired immediately.
2. All pipe elevation shown are invert \odot elevations.
3. The Contractor shall locate existing utilities a minimum of two weeks in advance of construction operations in vicinity of utilities.
4. For all standard details see standards bound in Specifications.
5. All horizontal and vertical controls are based on Maryland State Datum.
6. Clear all utilities by a minimum of 6'; Clear all poles by a minimum of 2'-0" or tunnel as required.
7. All manholes shall be 4'-0" insides diameter.
8. The Contractor shall provide a joint in all sewer pipe within 2'-0" of exterior manhole walls.



Note-A: The Contractor shall take all precaution to save the existing Twin 18" Oak



QUANTITY SCHEDULE	
ITEM	QUANTITY
8" Sewer	242 L.F.
MH	1/8 V.F.

WS 643 WS/1

BUREAU OF ENGINEERING INSPECTION AND SURVEY DIVISION	HOWARD COUNTY, MARYLAND APPROVED: _____ DIRECTOR OF PUBLIC WORKS DATE: _____	CONTRACT NO. 643 PLAN AND PROFILE	HOWARD HIGH SCHOOL ELECTION DISTRICT NO. 2 & 6
APPROVED: <i>W. O. P. 1-14-75</i> CHIEF ENGINEER OF ENGINEERING DATE: _____		DRAWING NO. 1 OF 1	SCALE AS SHOWN Drawn: J.L.L. Des: M.A.W. Chk: M.A.W. App: J.L.R.