

TYPICAL ALL SIDES
DETAIL A-1-D/A-1
Scale: 1/2" = 1'-0"

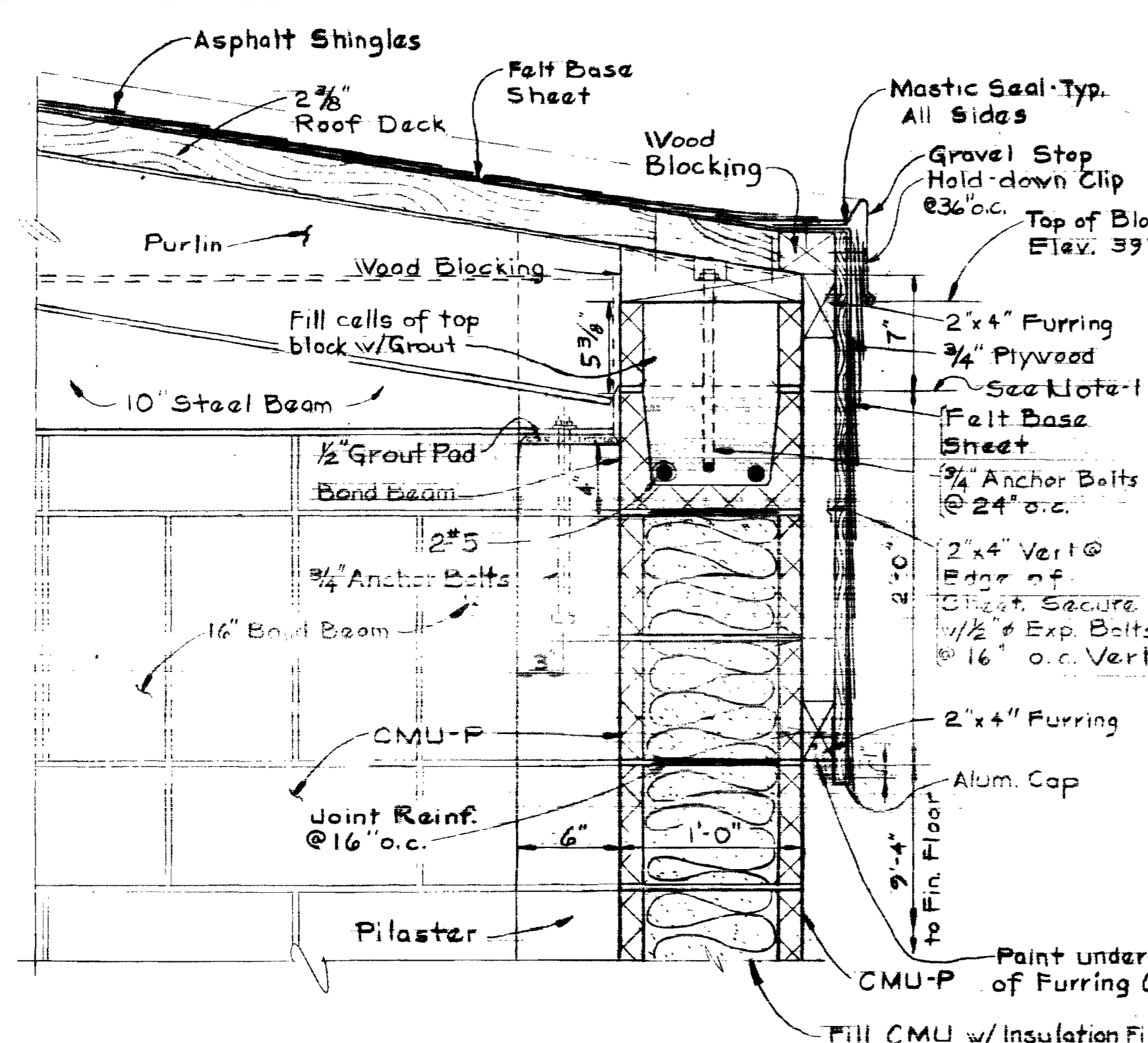
Professional Engineer & Architect Seal: Kenneth M. Lind, Registered Professional Engineer & Architect, State of Maryland, License No. 154-A.

Columbia Water Pumping Station
Project No. W-4-0056
Contract No. 642-W

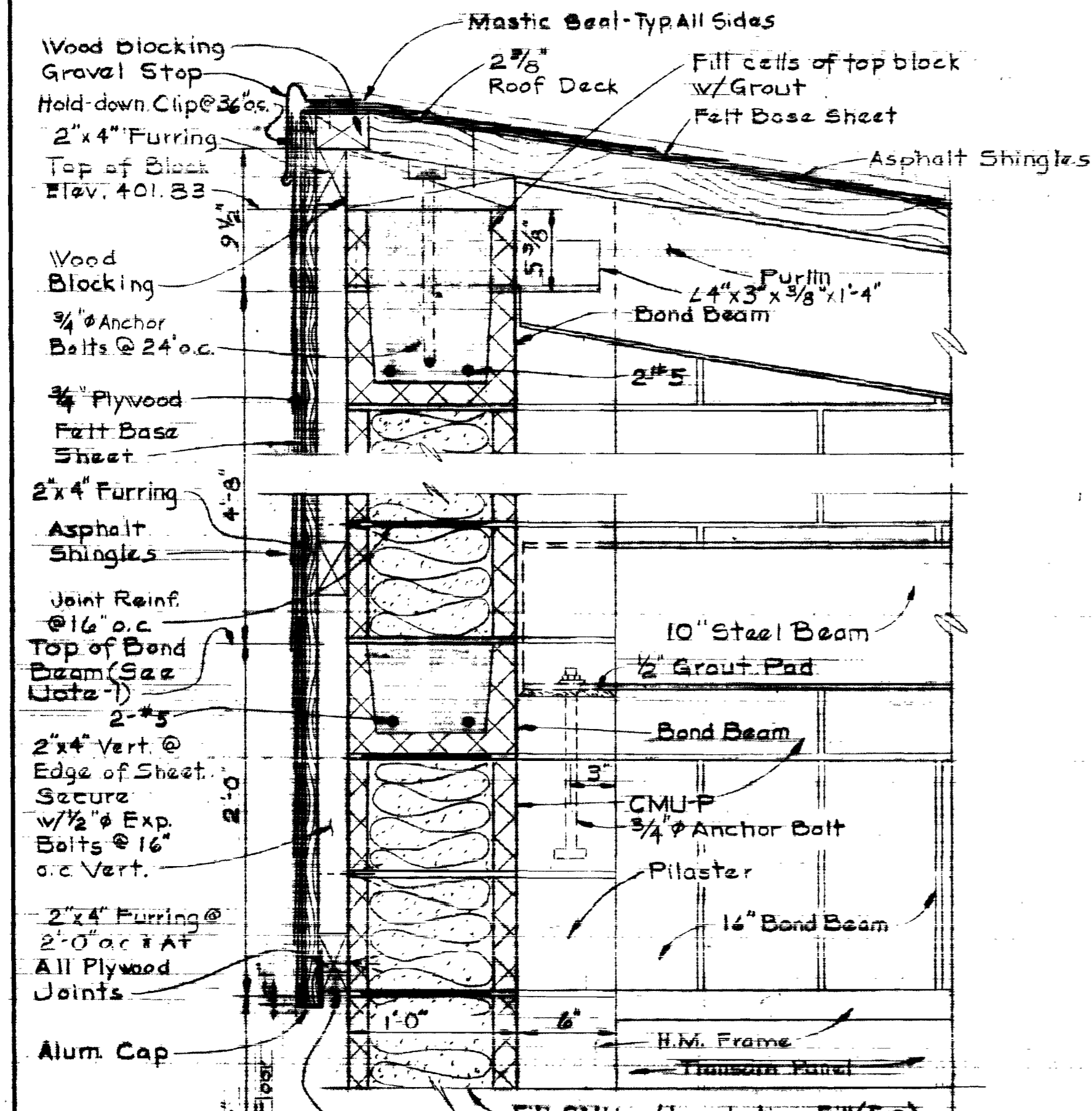
WHITMAN, REQUARDT & ASSOCIATES ENGINEERS 1304 ST. PAUL ST. BALTIMORE, MARYLAND	DEPARTMENT OF PUBLIC WORKS HOWARD COUNTY, MARYLAND 2-3-77 W. O. Falwell CHIEF-BUREAU OF ENGINEERING	CONTRACT NO. 642-W	ARCHITECTURAL ELEVATIONS PLANS, SECTIONS AND DETAILS	COLUMBIA WATER PUMPING STATION	DRAWING NO. 2 OF 7 SCALE AS SHOWN
---	---	--------------------	---	-----------------------------------	---

WS 642 W/2

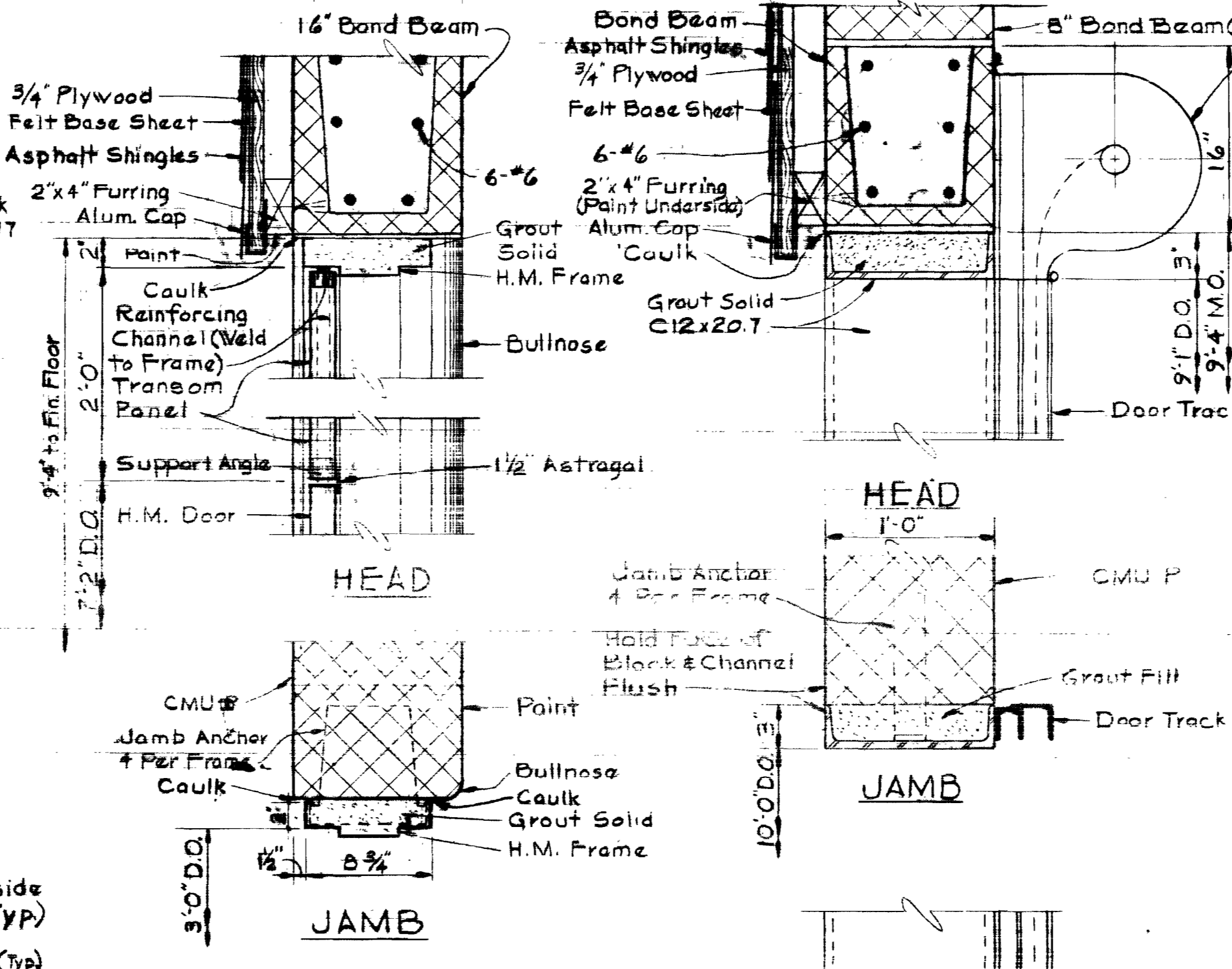
PLANNING 44-510 1-382



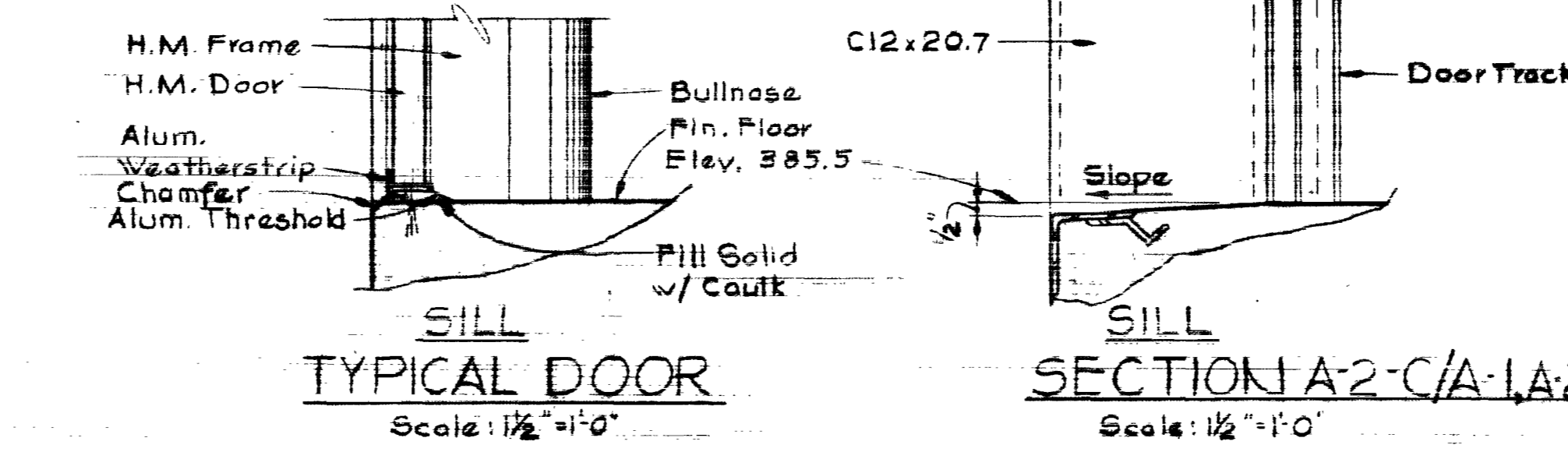
SECTION A-2-A/A-1
Scale: 1/2" = 1'-0"



SECTION A-2-B/A-1
Scale: 1/2" = 1'-0"



SECTION A-2-C/A-1A2
Scale: 1/2" = 1'-0"



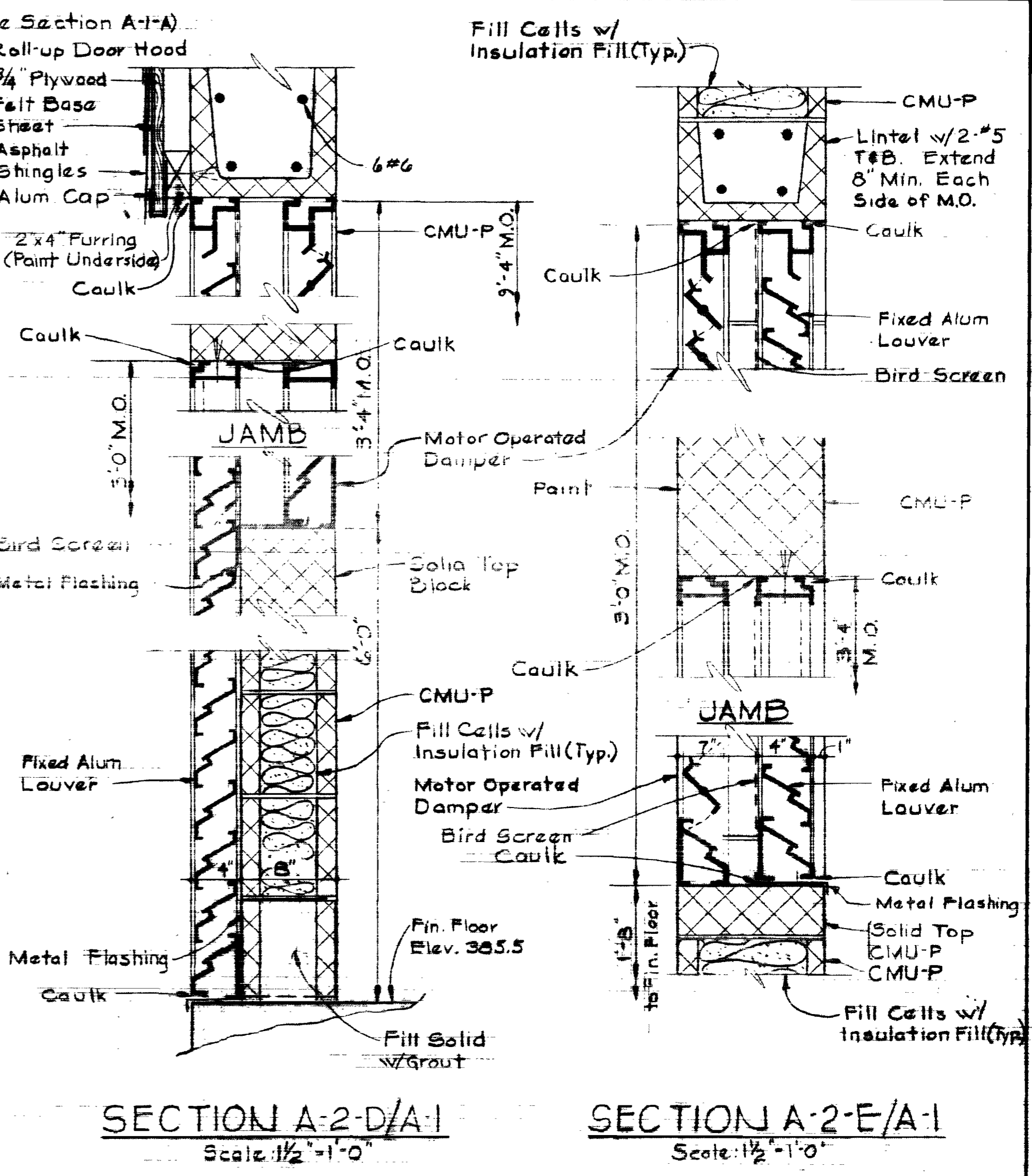
NOTE-1:
Top of Bond Beam @ Elev. 394.83.
Typical for Continuous Bond Beam
on North, East, & South walls.
See Section A-1-A for Size &
Location of Bond Beams on
West Wall.

NOTE-2:
Strike All Masonry Joints
Flush (Interior & Exterior)

DOOR SCHEDULE							
Door No.	Size D.O.	Material	Type	Head	Jamb	HDV	Remarks
D-1	3'-0" x 7'-2" x 1/4"	H.M.		See Typ. Door Detail	NV-1		
R-1	10'-0" x 9'-1"	Steel		See Section A-2-C			

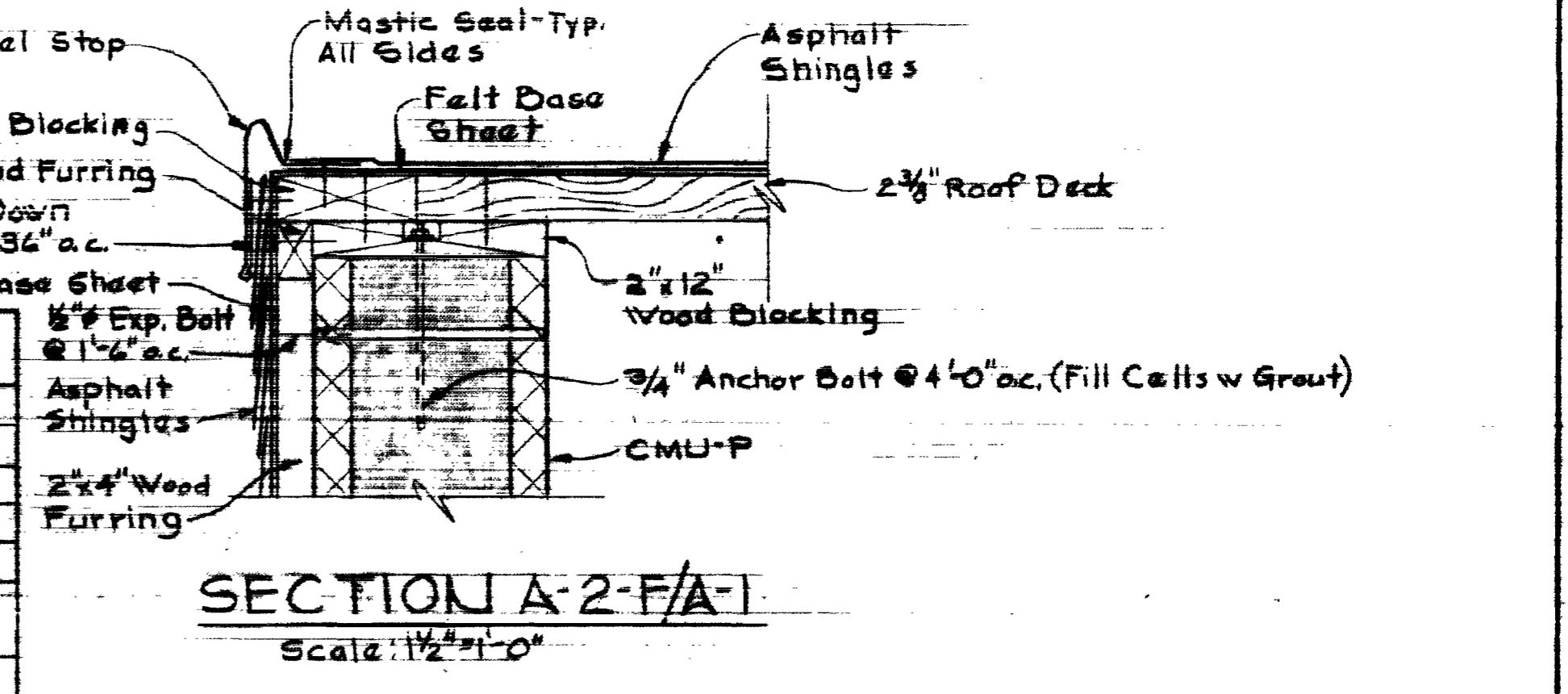
ABBREVIATIONS		COLORS	
ALUM	Aluminum	8B25	Spectra-Glaze (Special Brown)
CFH	Concrete Floor Hardener	23-1725	Tnemac Endurotone (Autumn Gold)
CMU-P	Concrete Masonry Unit (P-Painted)	66-1771	Tnemac Hi-Build (Pebble Gray)
CONC	Concrete	23-1771	Tnemac Endurotone (Pebble Gray)
ES-P	Exposed Structure (P-Painted)	52-1700	Tnemac Tnemac-Crete (White)
HM	Hollow Metal		
MT	Metal Threshold		
PF	Pz-Finished		

ROOM OR AREA	FLOOR	BASE	WALL	CEILING	REMARKS
PUMP AREA	CFH Clear	CONC	CONC	CONC	
CONTROL AREA	SPH	CMU	CONC	PP-9	Paint Steel Struct. ferrous
EXTERIOR WALLS					Metals
DOORS					Color - 23-1725

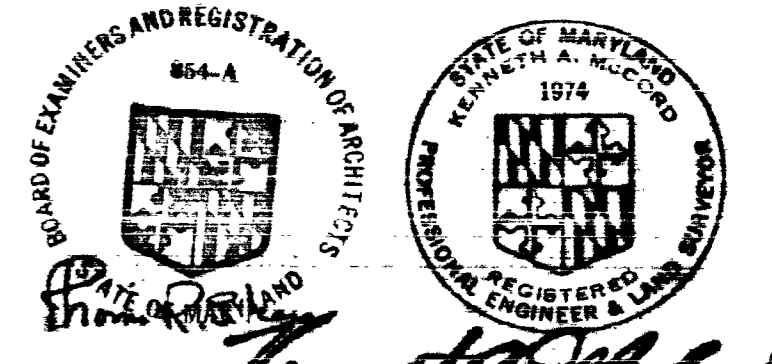


SECTION A-2-D/A-1
Scale: 1/2" = 1'-0"

SECTION A-2-E/A-1
Scale: 1/2" = 1'-0"



SECTION A-2-F/A-1
Scale: 1/2" = 1'-0"



WHITMAN, REQUARDT & ASSOCIATES ENGINEERS
1304 ST. PAUL ST. BALTIMORE, MARYLAND

DEPARTMENT OF PUBLIC WORKS
HOWARD COUNTY, MARYLAND
2-3-75
W.D. Fallent
CHIEF BUREAU OF ENGINEERING

CONTRACT NO. 642-W

ARCHITECTURAL SECTIONS AND DETAILS

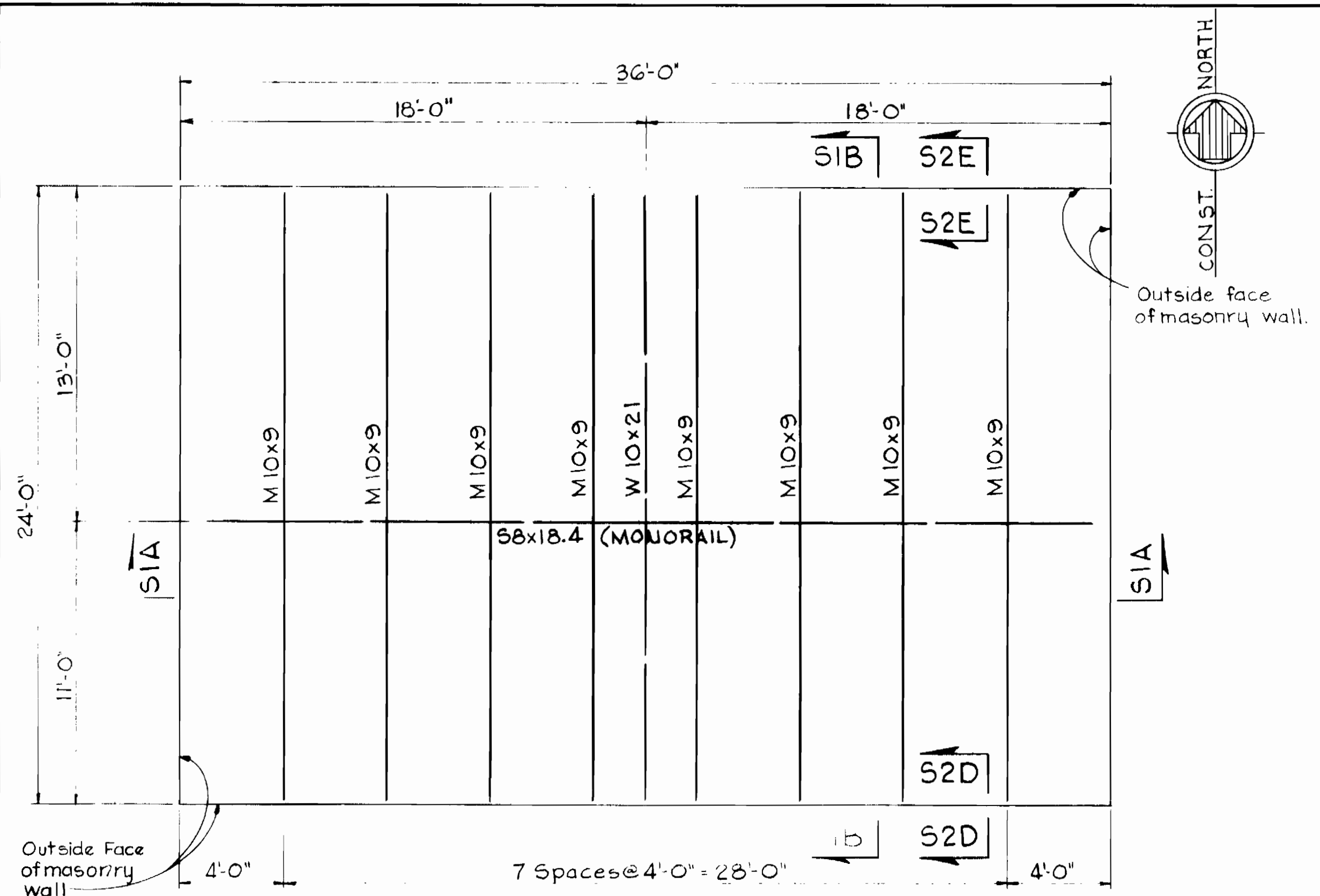
COLUMBIA WATER PUMPING STATION

DRAWING NO. 3 OF 7

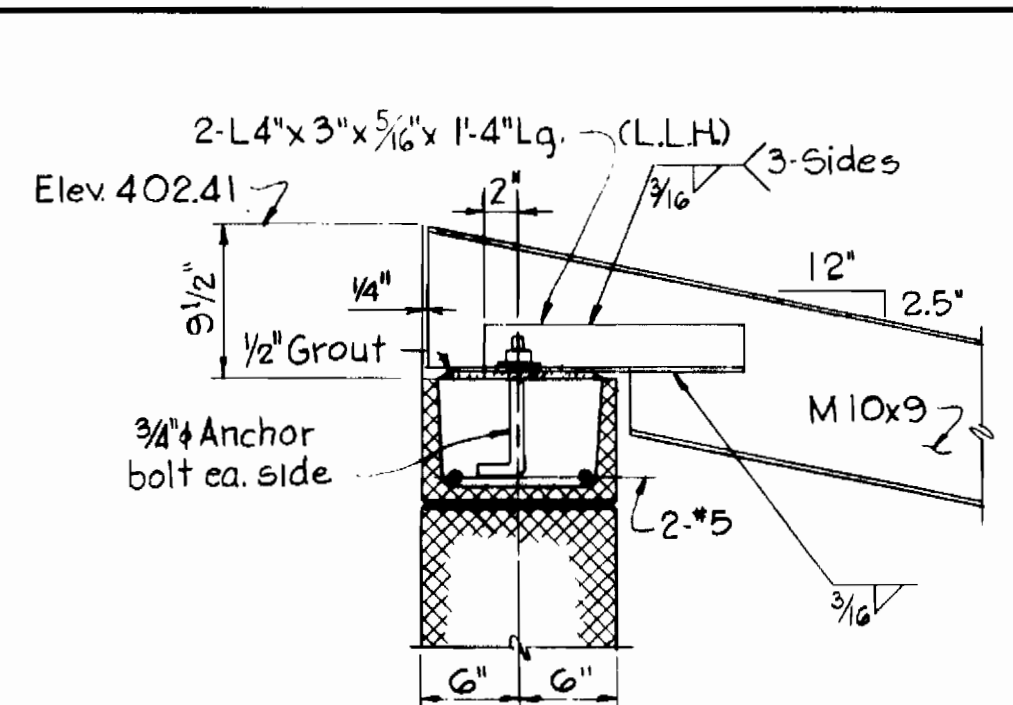
SCALE AS SHOWN

AS BUILT

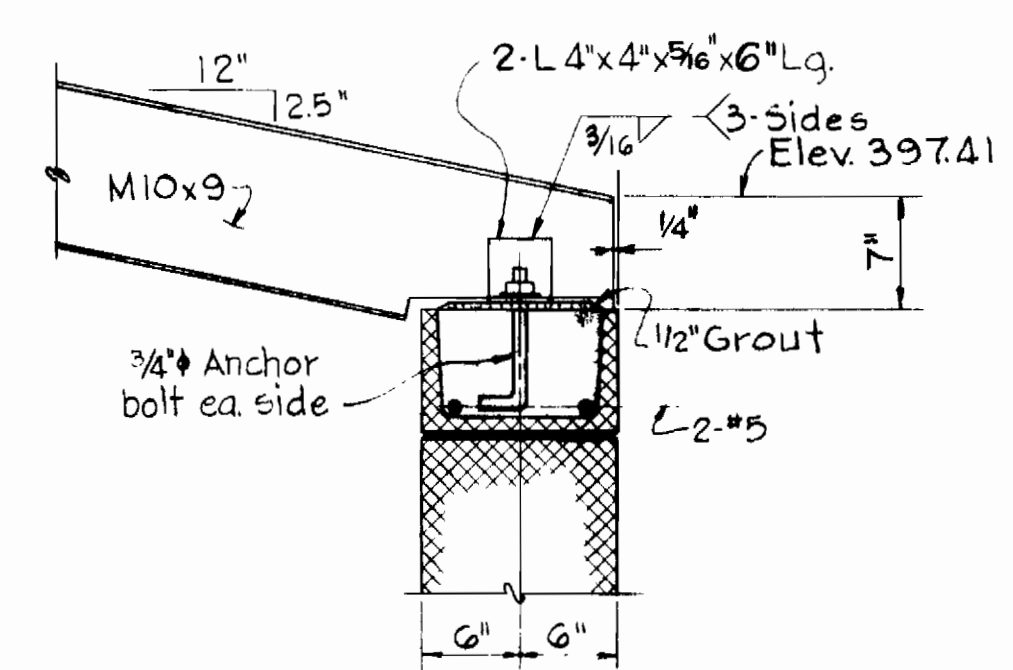
WS 642 W/3



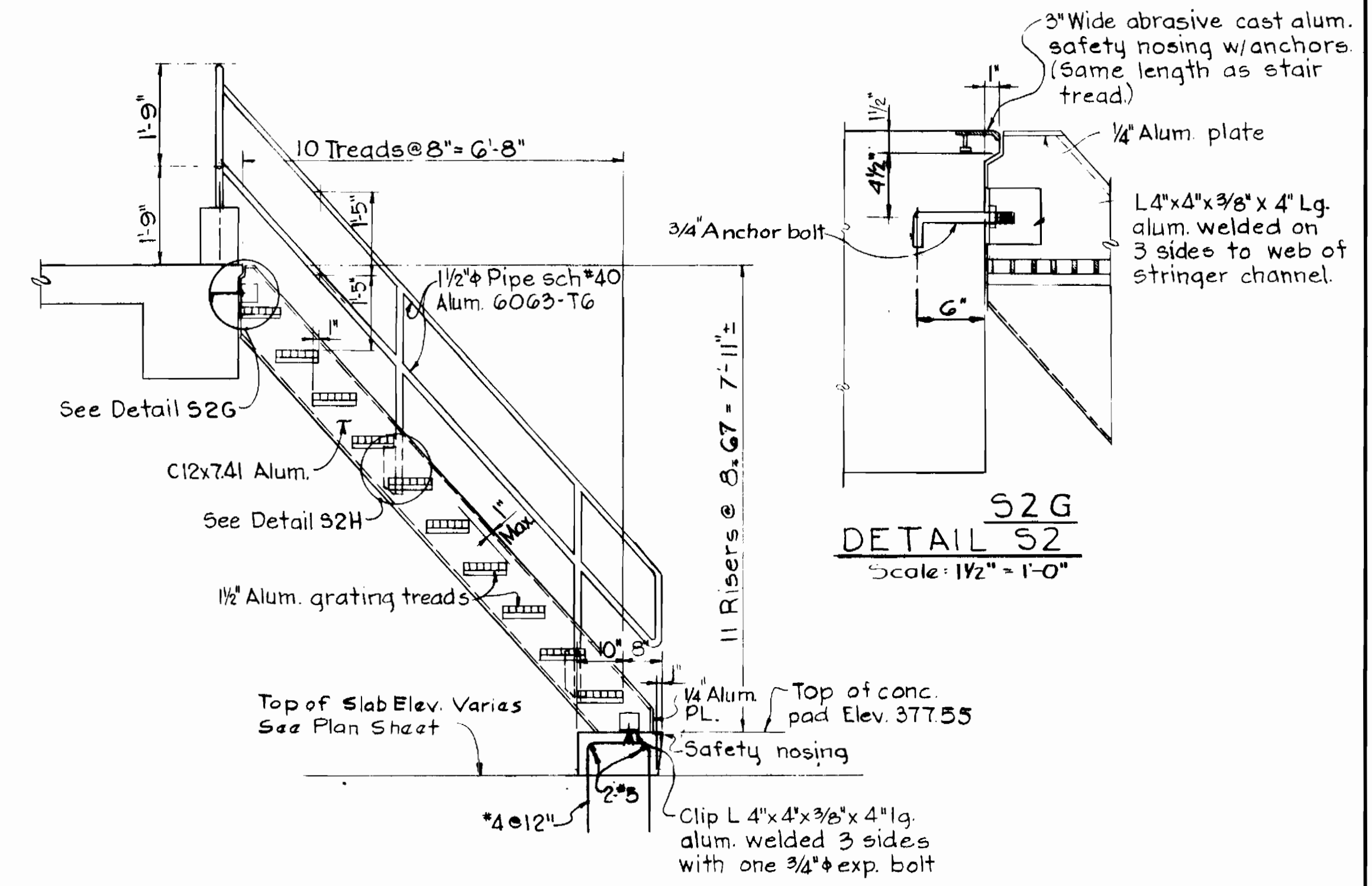
ROOF FRAMING PLAN
Scale: 1/4" = 1'-0"



SECTION S2D
Scale: 1" = 1'-0"

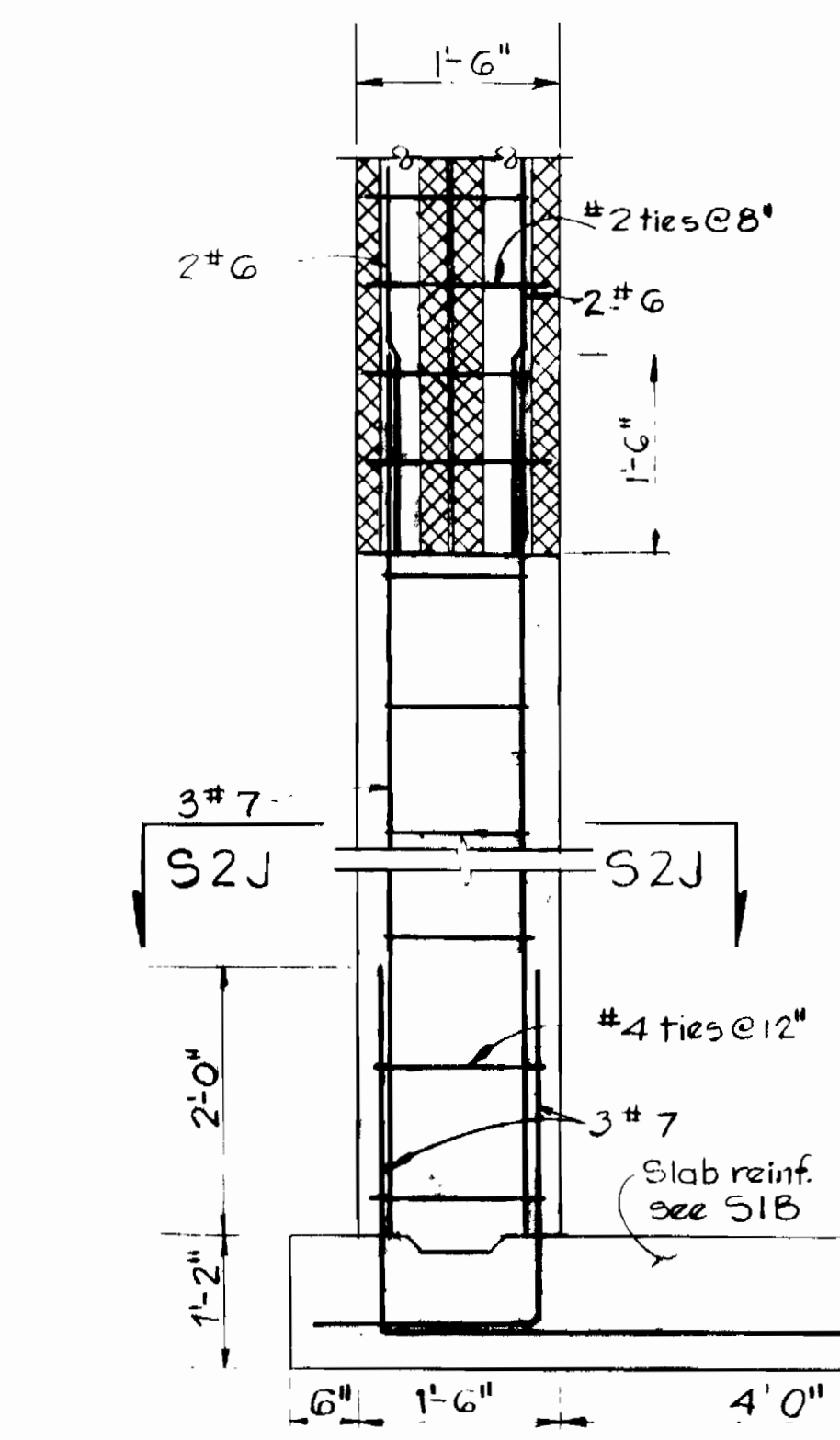


SECTION S2E
Scale: 1" = 1'-0"

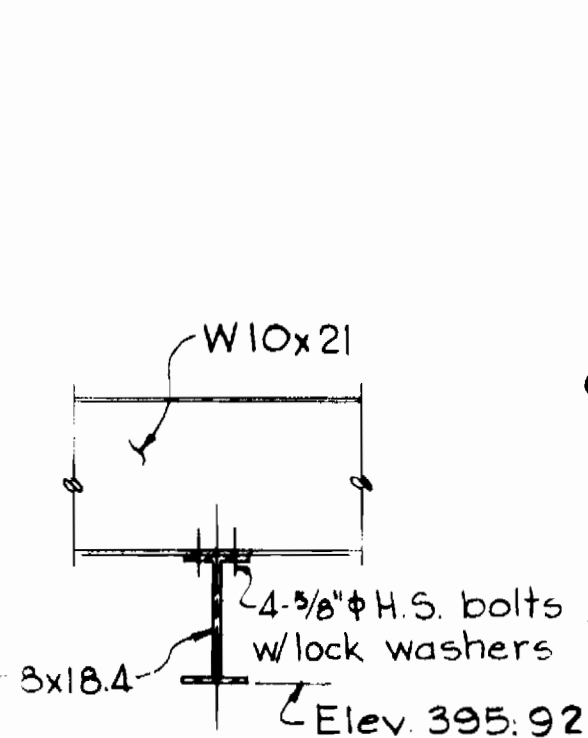


SECTION S2F
Scale: 1/2" = 1'-0"

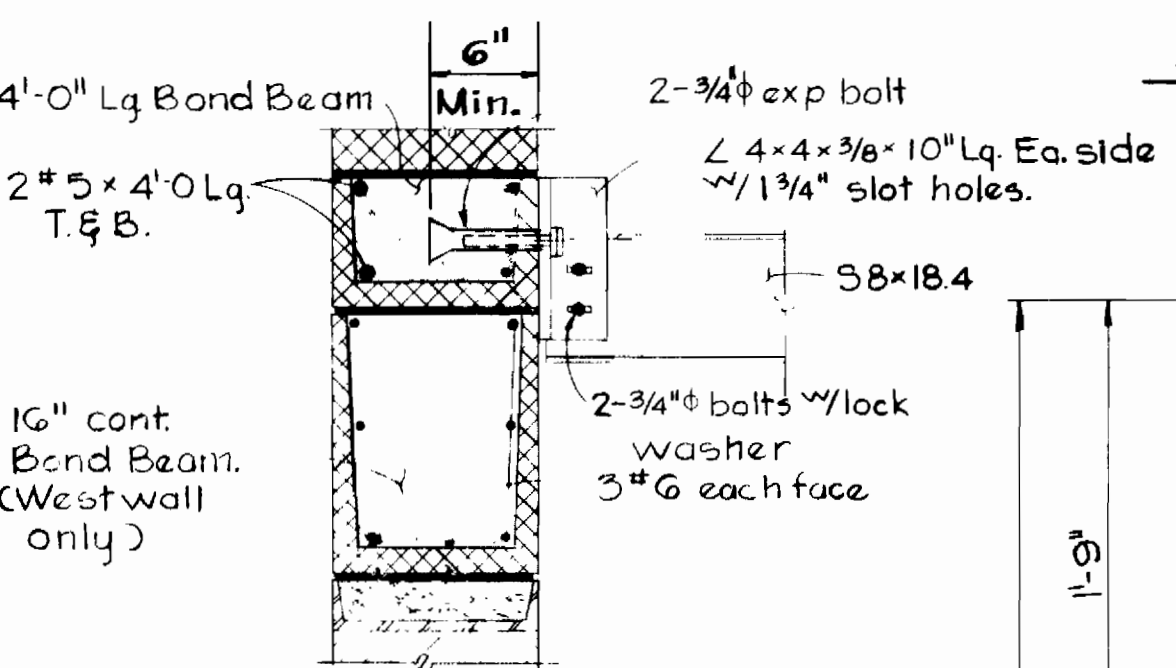
DETAIL S2G
Scale: 1 1/2" = 1'-0"



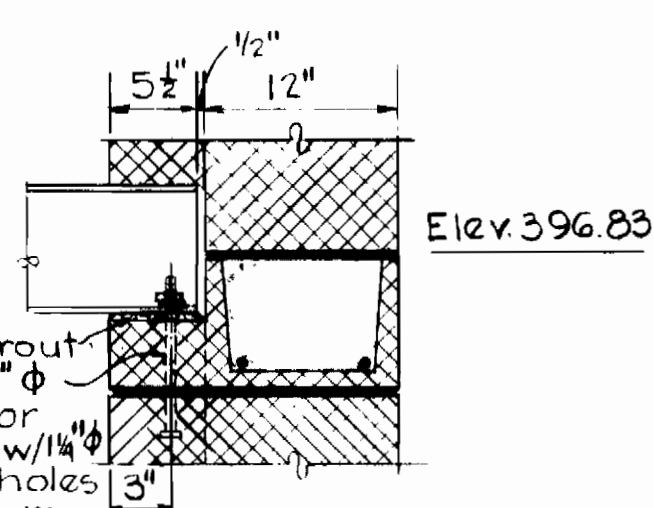
SECTION S2A
Scale: 3/4" = 1'-0"



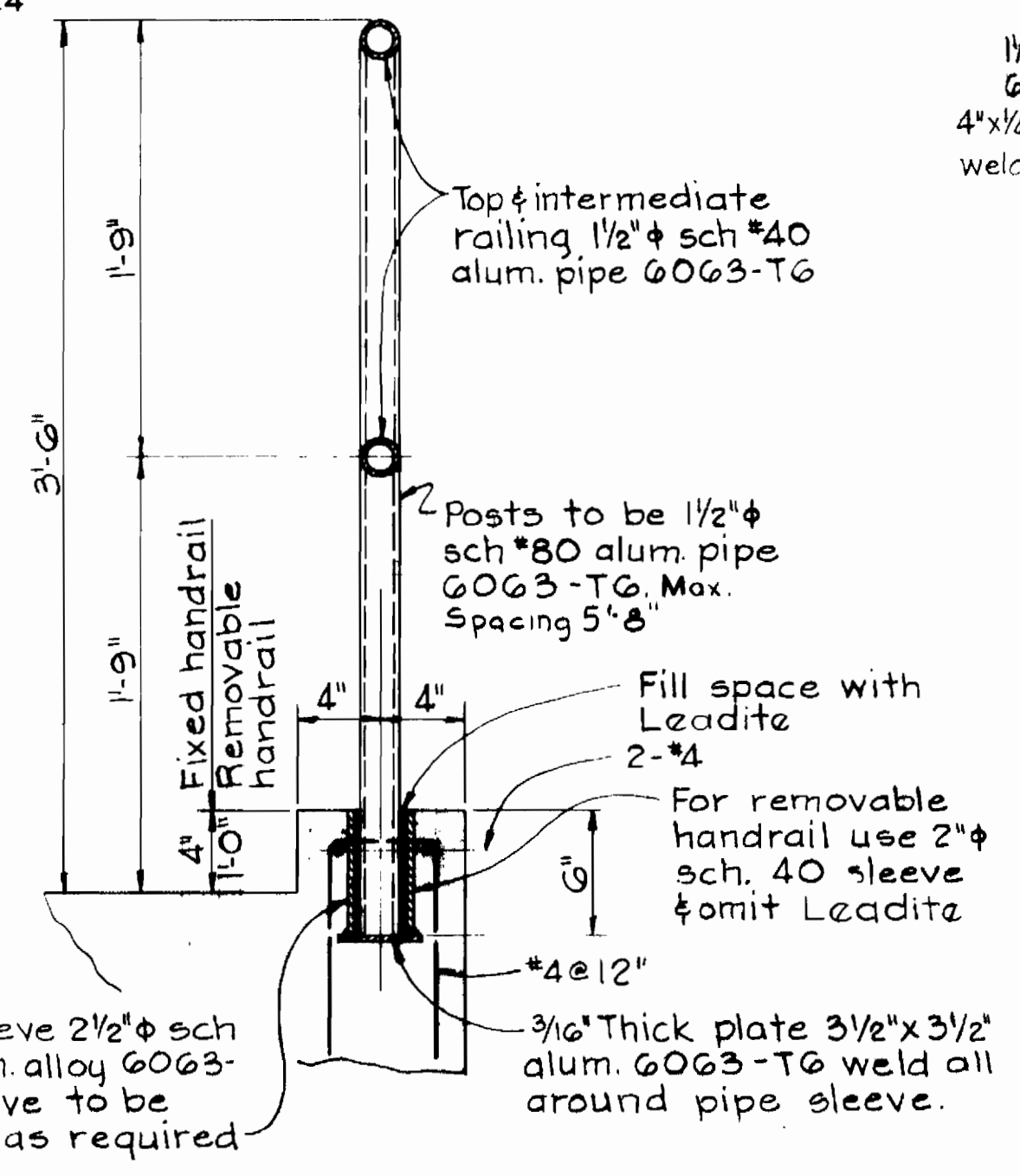
DETAIL S2B
Scale: 1" = 1'-0"



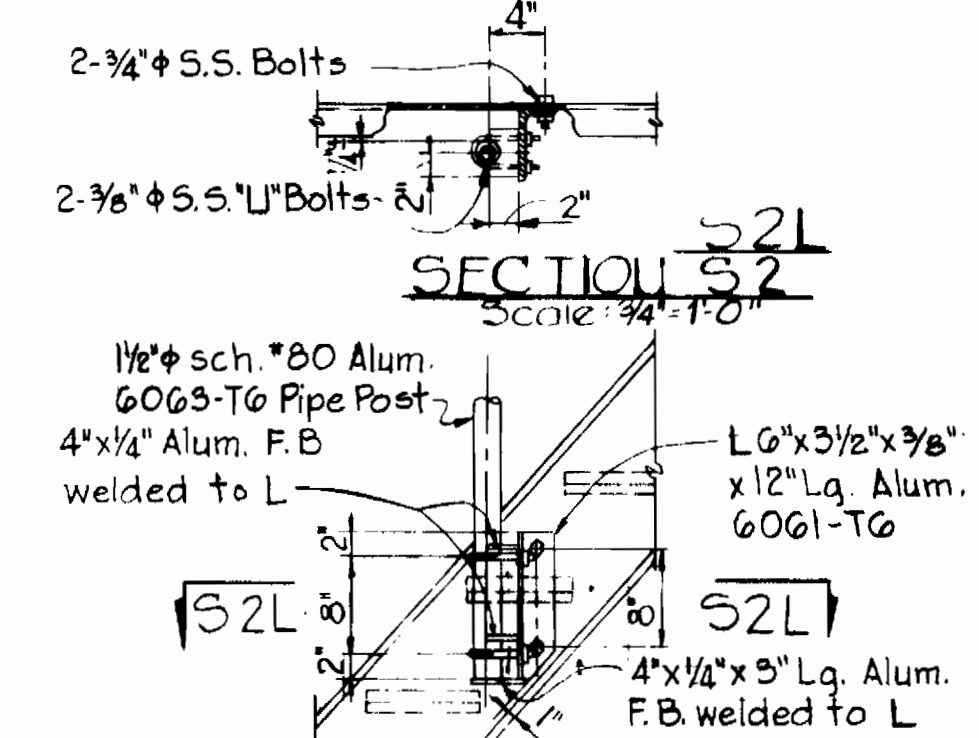
DETAIL S2K
Scale: 1" = 1'-0"



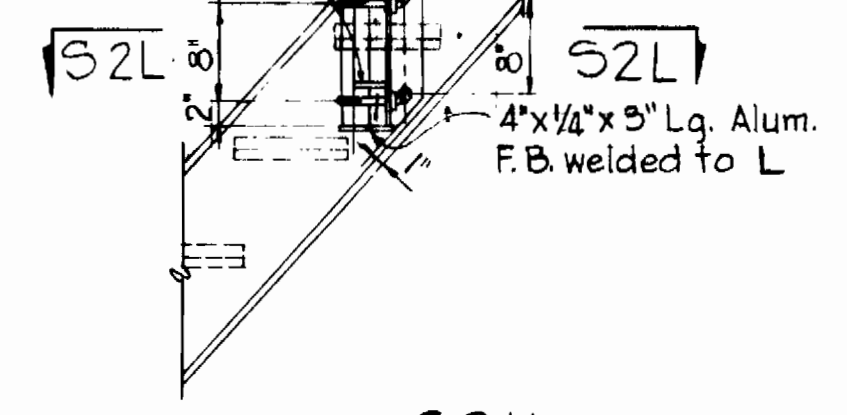
DETAIL S2C
Scale: 1" = 1'-0"



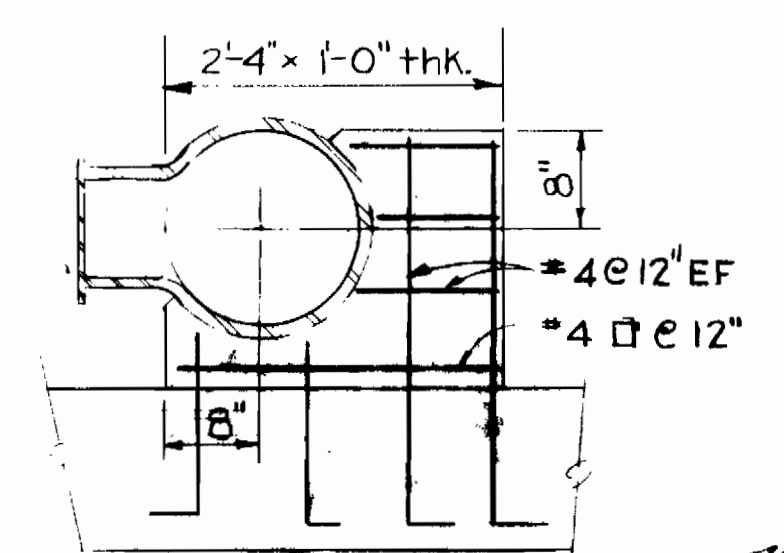
TYPICAL HANDRAIL POST CONNECTION IN CONCRETE
Scale: 1 1/2" = 1'-0"



SECTION S2L
Scale: 3/4" = 1'-0"



DETAIL S2H
Scale: 3/4" = 1'-0"



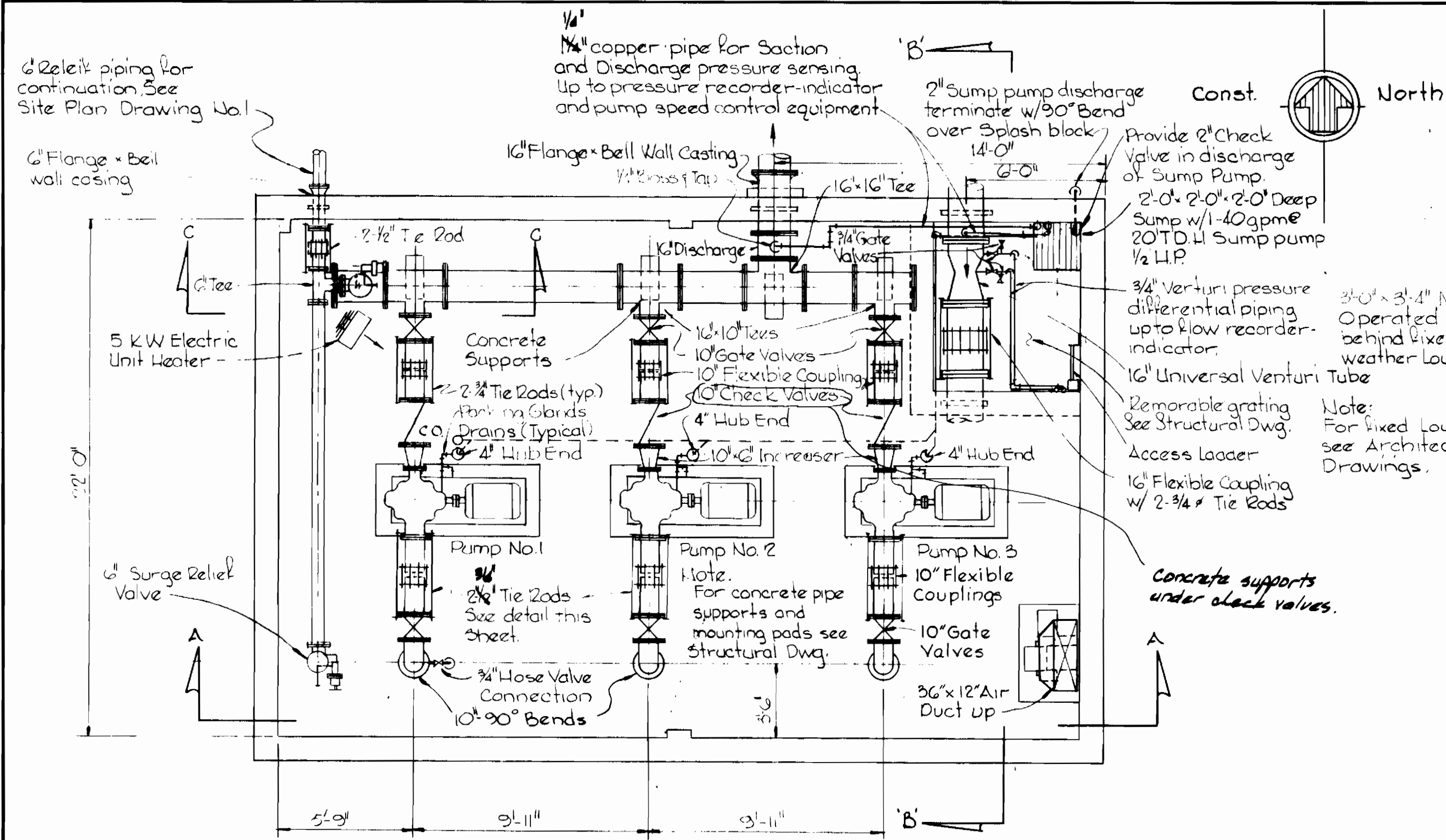
CONCRETE PIPE SUPPORT
Scale: 3/4" = 1'-0"

- CONCRETE NOTES**
- All concrete shall have a minimum compressive strength of 3500 psi at 28 days. See specifications for other requirements.
 - Reinforcing steel shall be Grade 40, conforming to ASTM-A615-72.
 - Reinforcing bars shall be embedded and/or lapped a minimum of 30 diameters.
 - All exposed surfaces of floor slabs shall receive hardener.
- STRUCTURAL STEEL NOTES**
- All Structural Steel shall conform to ASTM-A36-70a and shall be detailed, fabricated and erected in accordance with the current AISC Specifications for Buildings. See specifications for other requirements.

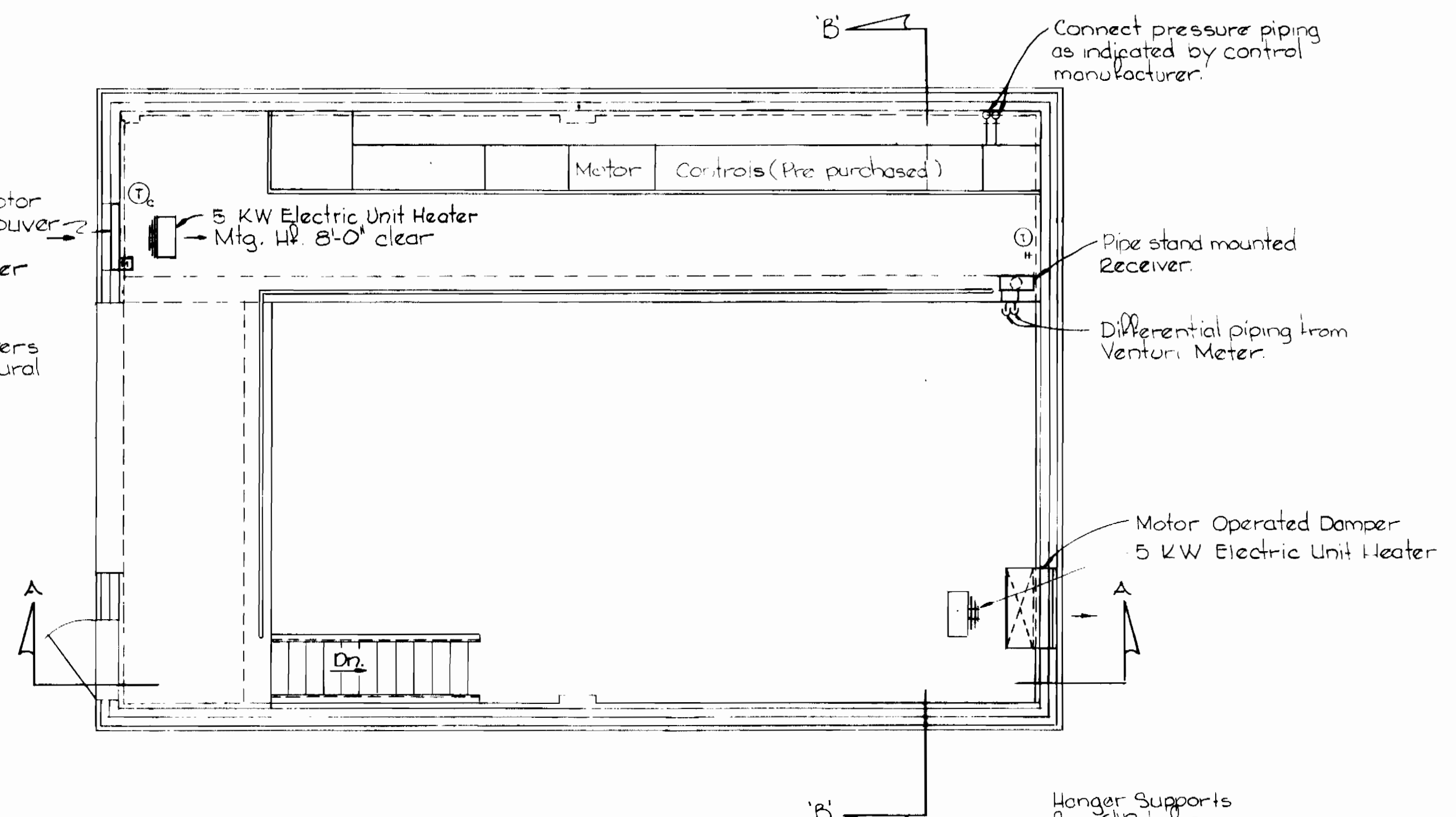


Kenneth A. Mink
Columbia Water Pumping Station
Project No. W-4-2056
Contract No. 642-W

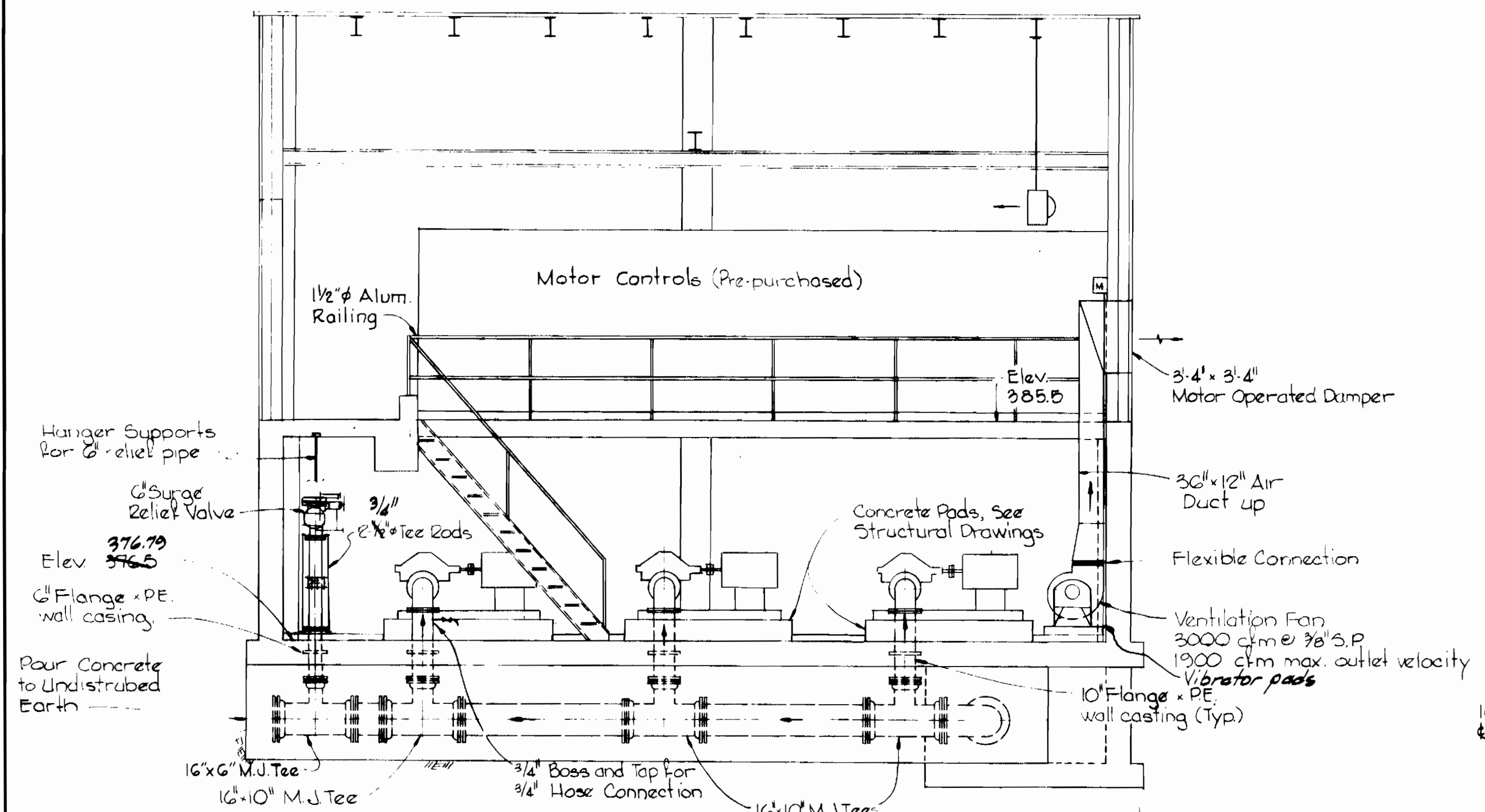
WHITMAN, REQUARDT & ASSOCIATES ENGINEERS 1304 ST. PAUL ST. BALTIMORE, MARYLAND	DEPARTMENT OF PUBLIC WORKS HOWARD COUNTY, MARYLAND 2-3-75 W. O. Falbert CHIEF-BUREAU OF ENGINEERING	CONTRACT NO. 642-W	STRUCTURAL PLAN, SECTIONS AND DETAILS	COLUMBIA WATER PUMPING STATION	DRAWING NO. 5 OF 7 SCALE AS SHOWN
---	---	--------------------	--	-----------------------------------	--------------------------------------



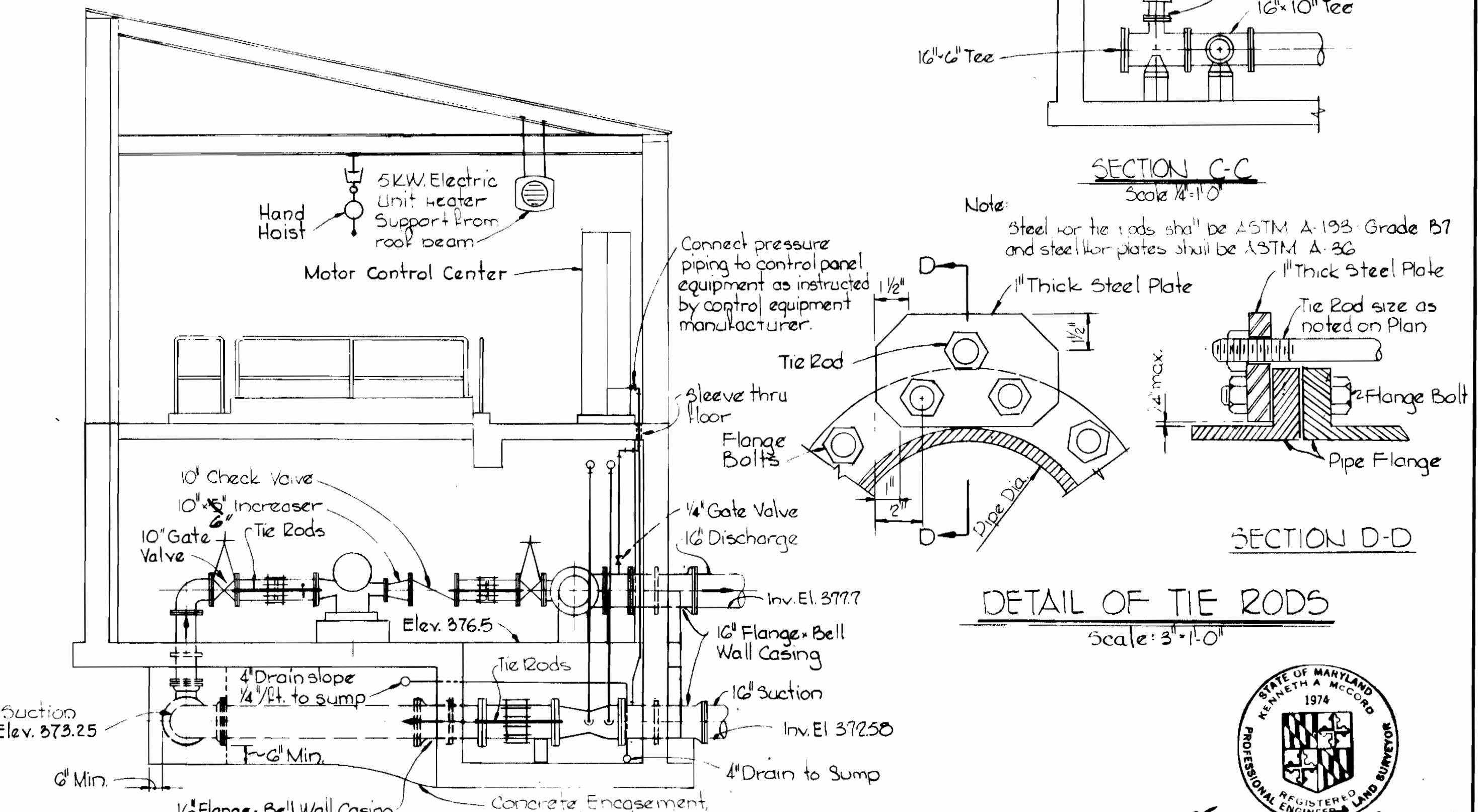
PLAN PUMP LEVEL
Scale: 1/4"=1'-0"



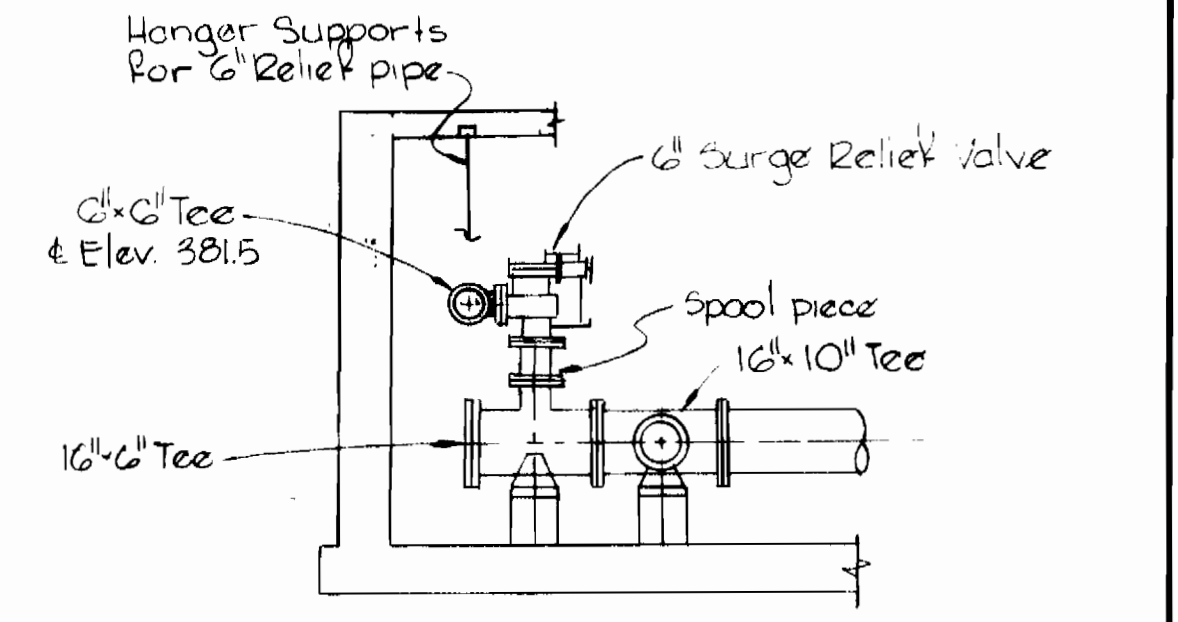
PLAN OPERATING LEVEL
Scale: 1/4"=1'-0"



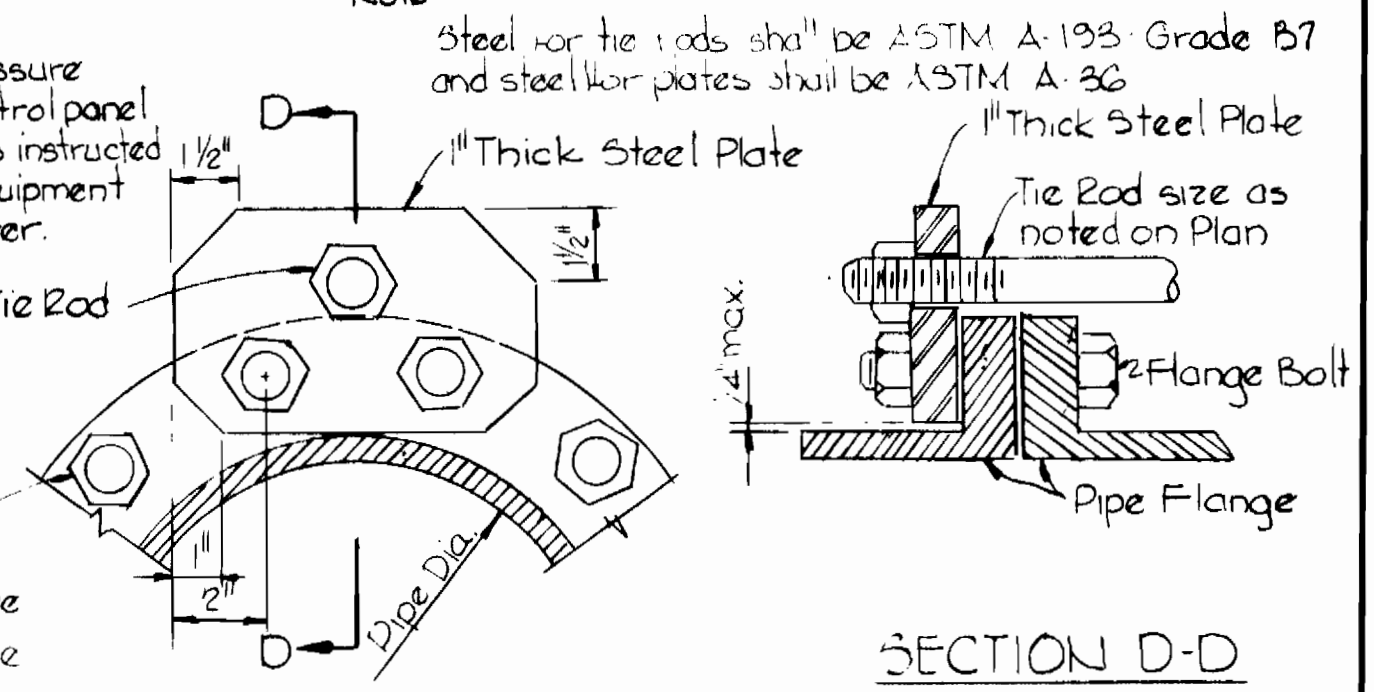
SECTION A-A
Scale: 1/4"=1'-0"



SECTION B-B
Scale: 1/4"=1'-0"



SECTION C-C
Scale: 1/2"=1'-0"



DETAIL OF TIE RODS
Scale: 3/4"=1'-0"

Note: Concrete encasement at bend shall be poured to undisturbed earth.



Kenneth A. McLeod

Columbia Water Pumping Station
Project No. W-4-8056
Contract No. 642-W

WHITMAN, REQUARDT & ASSOCIATES
ENGINEERS
1304 ST. PAUL ST.
BALTIMORE, MARYLAND

DEPARTMENT OF PUBLIC WORKS
HOWARD COUNTY, MARYLAND

2-3-75
DATE

W. O. Falbert
CHIEF BUREAU OF ENGINEERING

CONTRACT NO. 642-W

MECHANICAL
PLANS, SECTIONS AND DETAILS

COLUMBIA WATER
PUMPING STATION

DRAWING
NO. 6
OF 7
SCALE
AS
SHOWN

