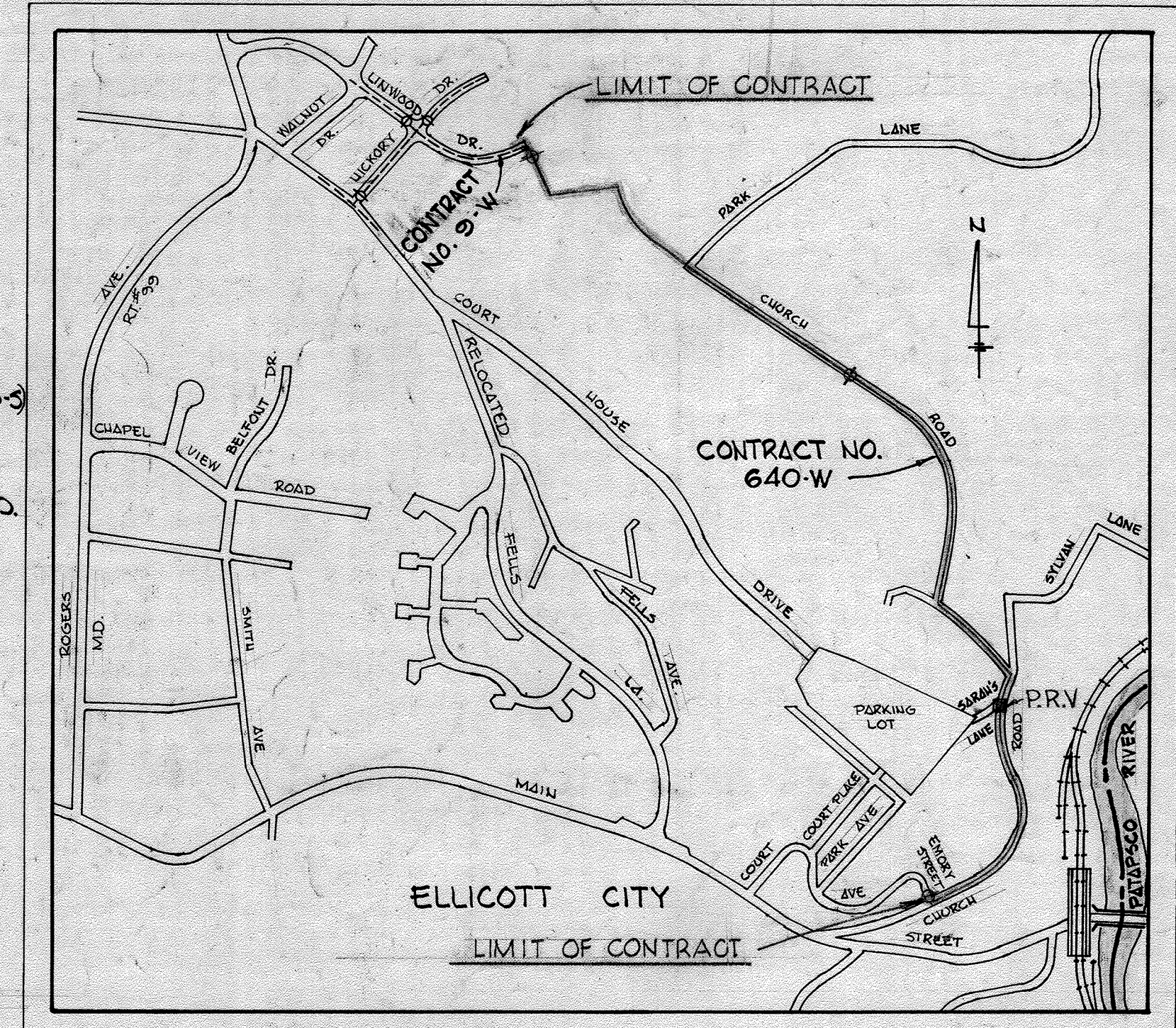
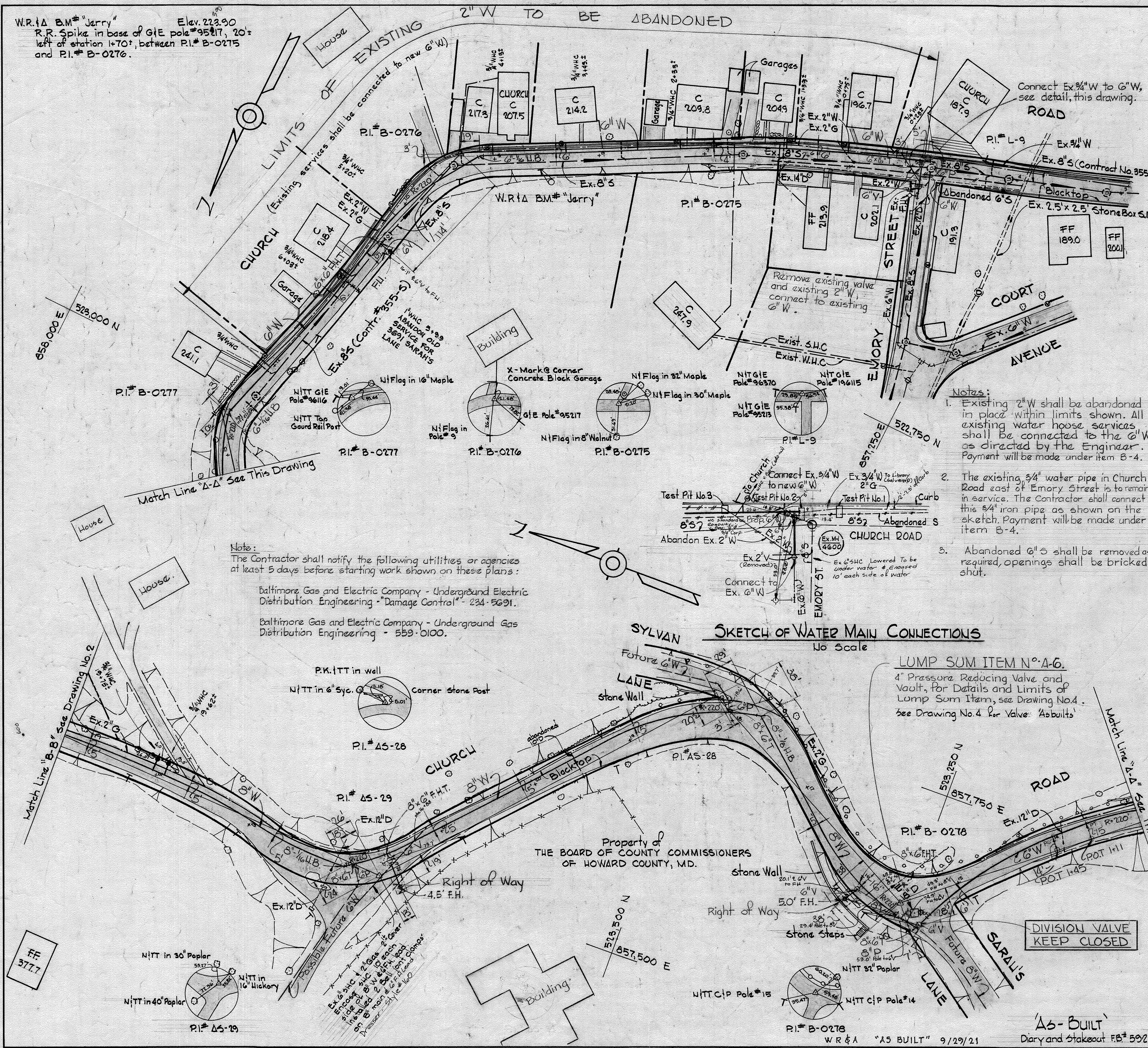


W.R. & A. B.M. "Jerry" Elev. 213.90
 R.R. Spike in base of GIE pole #95217, 20' left of station 1+70, between P.I. # B-0275 and P.I. # B-0276.

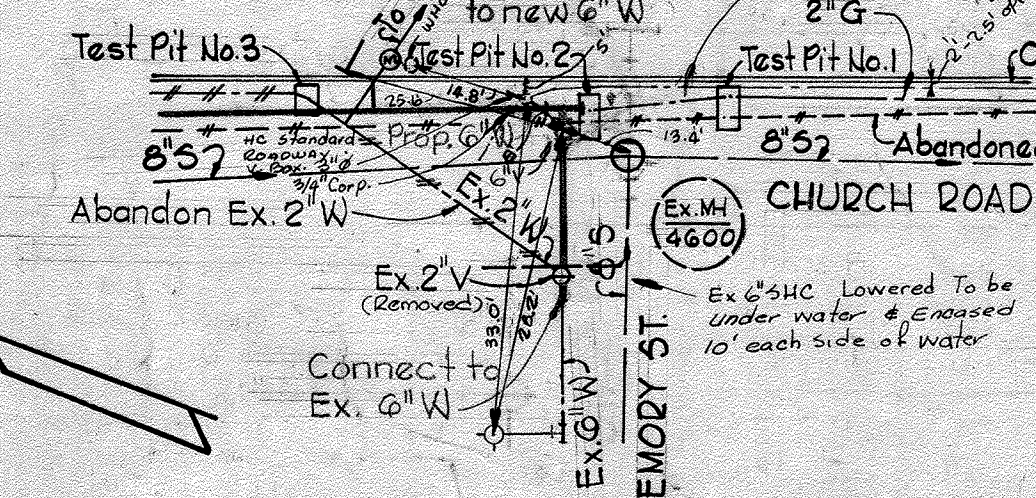


VICINITY MAP
 Scale: 1" = 600'

GENERAL NOTES

- Approximate location of existing mains are shown. The Contractor shall take all necessary precautions to protect existing mains and services and maintain uninterrupted supply. Any damage incurred shall be repaired immediately.
- All pipe elevations shown are invert elevations.
- The Contractor shall locate existing utilities a minimum of two weeks in advance of construction operations in vicinity of utilities.
- Clear all utilities by a minimum of 6"; clear all poles by 2'-0" minimum or tunnel as required.
- All water mains shall have a minimum of 3 1/2' cover unless otherwise noted.
- Profile stations may have to be adjusted as required to conform to plan dimensions.
- For all standard details see standards bound in specifications.
- Block all fittings with concrete, except as otherwise noted, see standards bound in specification.
- All fire hydrants shall be strapped to the tee and shall be buttressed with concrete in accordance with standard details.
- Bury line elevation on fire hydrants shall be set the same as edge of paving, top of curb, or as directed by the Engineer in the field. Soil around fire hydrants to be compacted in accordance with Section 5-15 of the standard specifications.
- Cost of strapping fire hydrants and valves to tees shall be included in the unit price bid for furnishing and installing fire hydrants.
- All horizontal and vertical controls are based on Maryland State Datum.
- Trees shall be protected from damage to maximum extent. Trees located within the construction strip are not to be removed or damaged by the Contractor.
- Water services shall be for inside meter settings. See Standard Details.

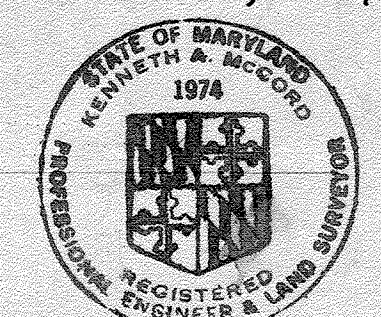
SKETCH OF WATER MAIN CONNECTIONS
 No Scale



LUMP SUM ITEM NO. 4-6
 4" Pressure Reducing Valve and Vault, for Details and Limits of Lump Sum Item, see Drawing No. 4. See Drawing No. 4 for Valve 'As-Built'

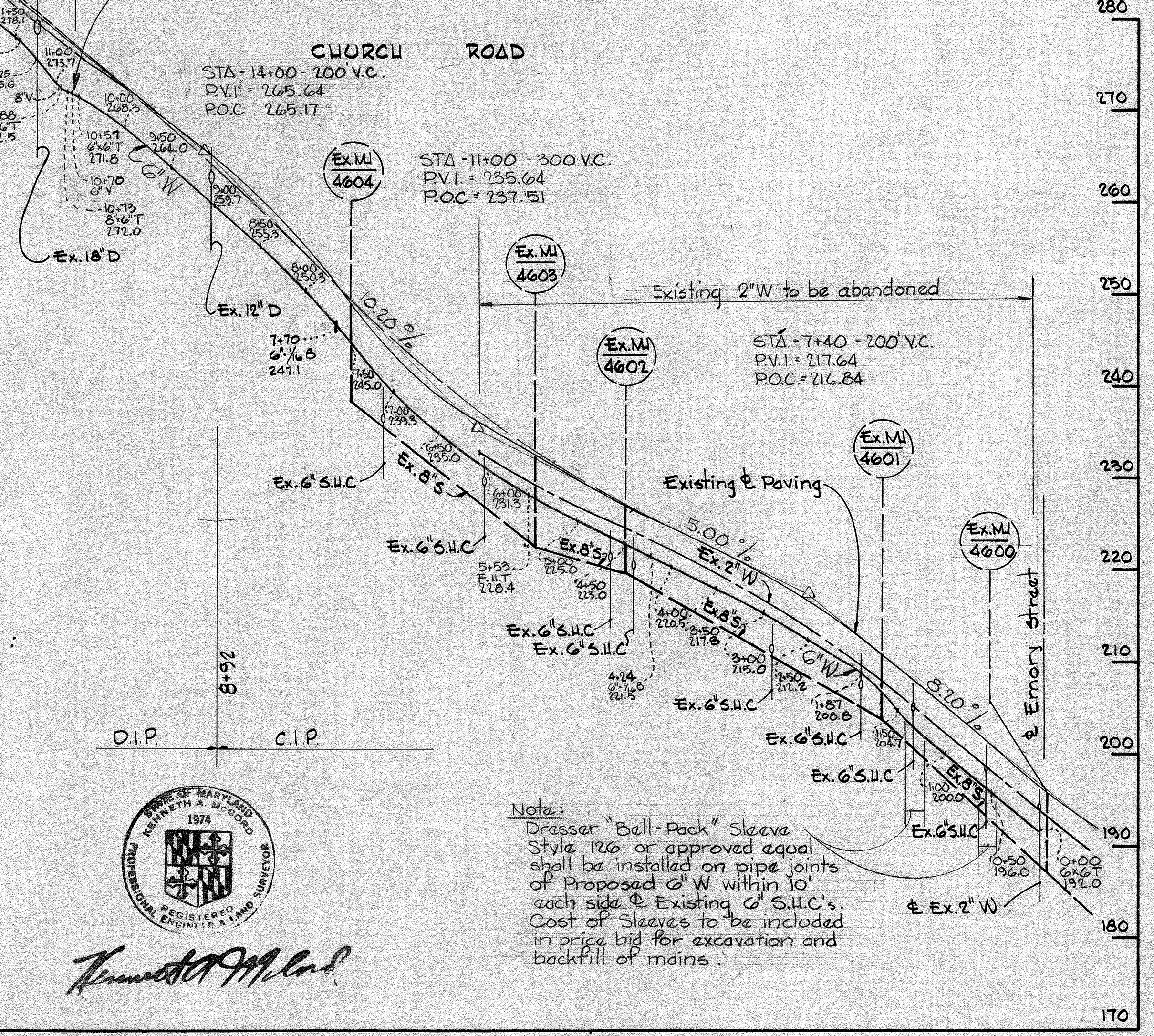
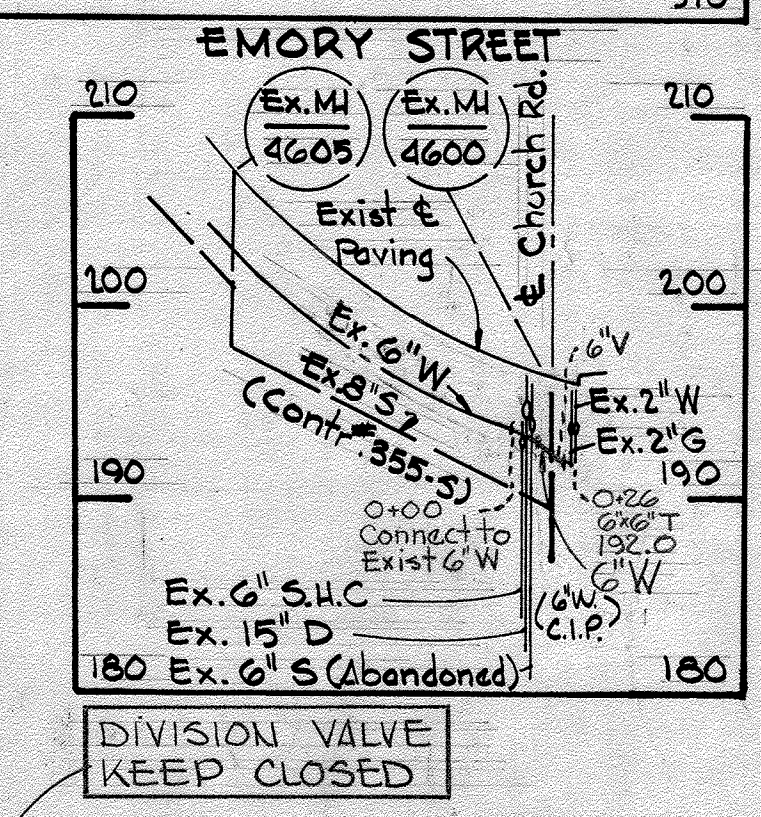
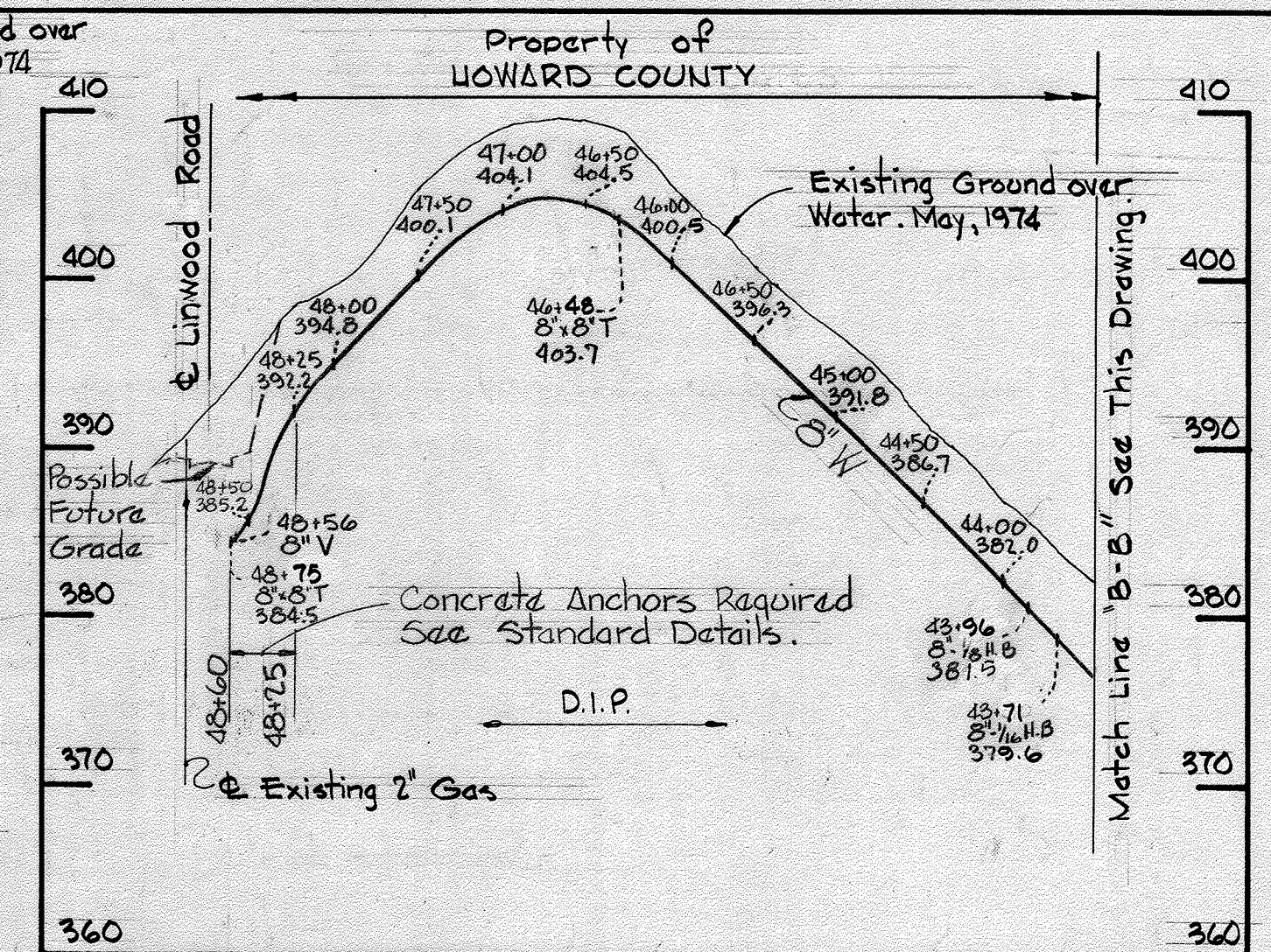
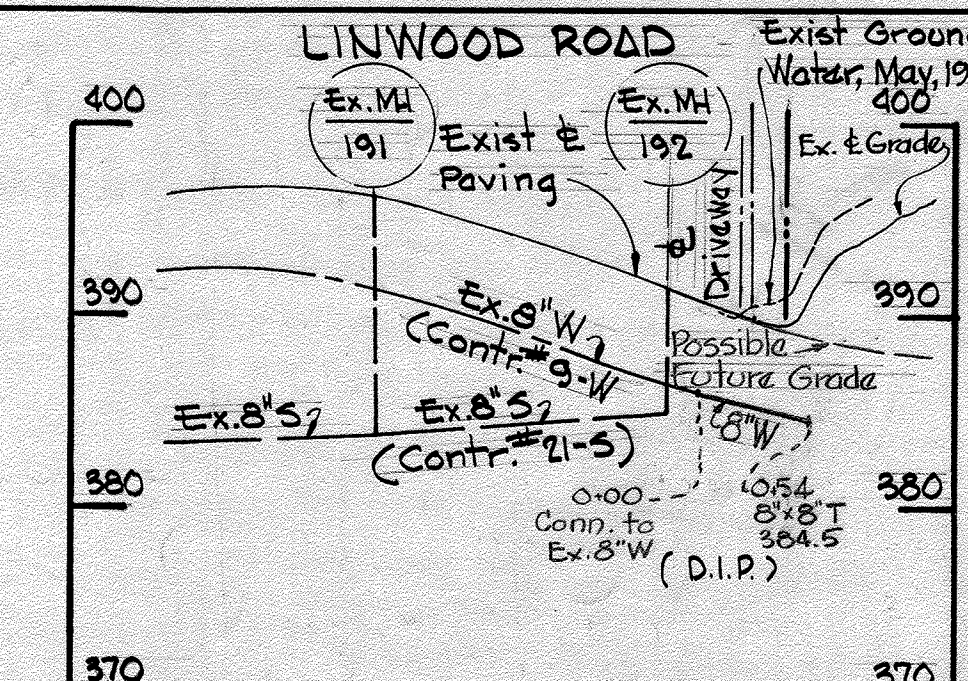
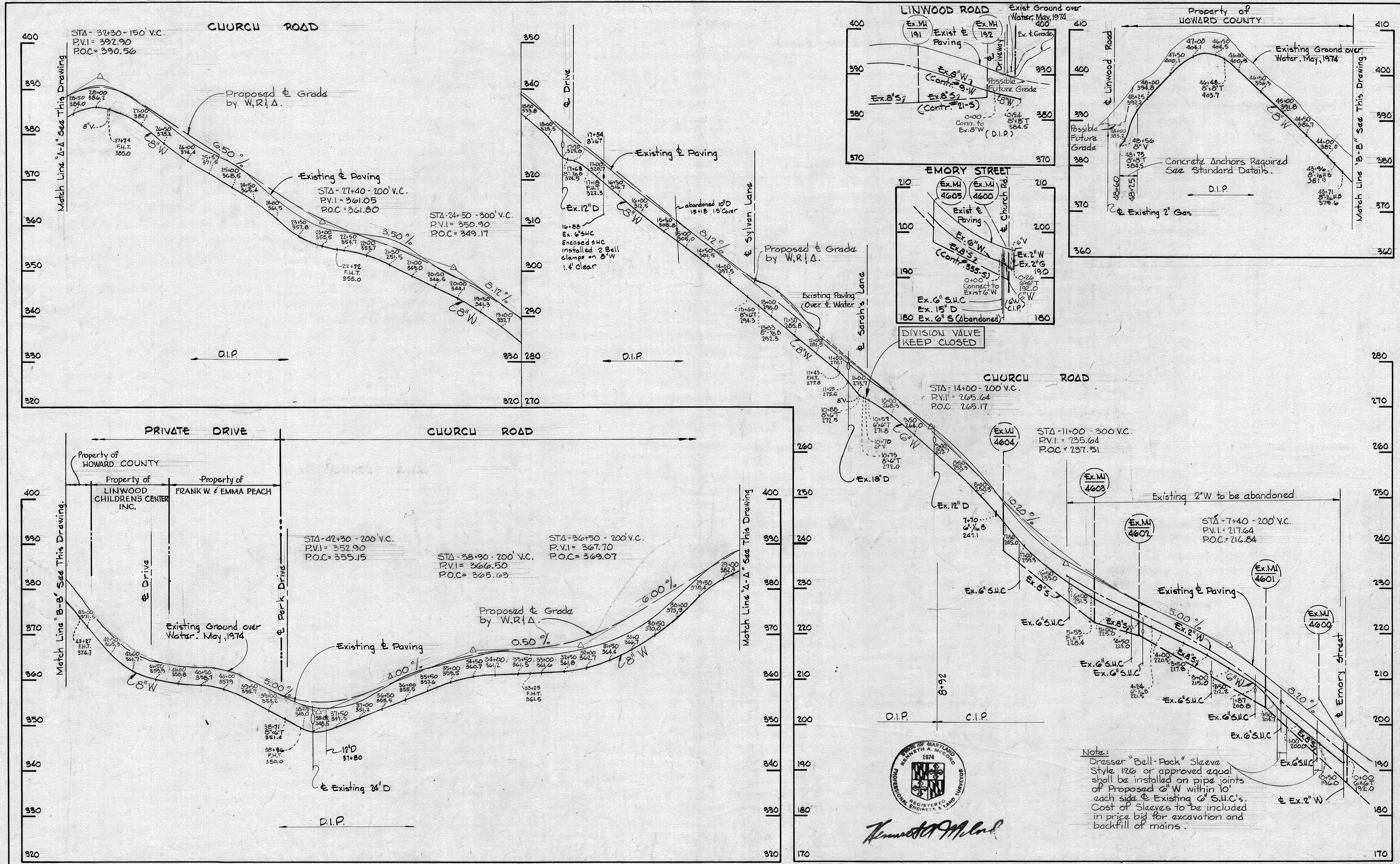
DIVISION VALVE
 KEEP CLOSED

QUANTITIES		
ITEM	QUANTITY	'AS-BUILT'
6" W	1,220 L.F.	1223 L.F.
8" W	3,840 L.F.	3855 L.F.
F.H.	8	8



Church Road
 Project No. W4-8041
 Contract No. 640-W

WHITMAN, REQUARDT & ASSOCIATES ENGINEERS 1304 ST. PAUL ST. BALTIMORE, MARYLAND	DEPARTMENT OF PUBLIC WORKS HOWARD COUNTY, MARYLAND Director of Public Works - DATE	CONTRACT NO. 640-W PROJECT NO. W4-8041	PLAN OF WATER MAIN	ELECTION DISTRICT ELLICOTT CITY NO. 2	DRAWING NO. 4 OF 4	SCALE 1" = 50'	522-6 522-7 523-6 523-7
--	---	---	---------------------------	---	-------------------------------------	--------------------------	----------------------------------



Notes:
 Dresser "Ball-Pack" Sleeve Style 126 or approved equal shall be installed on pipe joints of Proposed 6" W within 10' each side of Existing 6" S.U.C.'s. Cost of Sleeves to be included in price bid for excavation and backfill of mains.



WHITMAN, REQUARDT & ASSOCIATES ENGINEERS 1304 ST. PAUL ST. BALTIMORE, MARYLAND	DEPARTMENT OF PUBLIC WORKS HOWARD COUNTY, MARYLAND J. J. [Signature] 3-5-76 DIRECTOR OF PUBLIC WORKS - DATE	CONTRACT NO. 640-W PROJECT NO. W4-8041 W. O. Libat 3-3-76 CHIEF BUREAU OF ENGINEERING - DATE	PROFILES OF WATER MAINS	ELECTION DISTRICT ELLICOTT CITY NO.2	DRAWING NO. 3 OF 4	SCALE H: 1" = 100' V: 1" = 10'
---	--	---	----------------------------	---	--------------------------	--------------------------------------

W. O. 6935-2

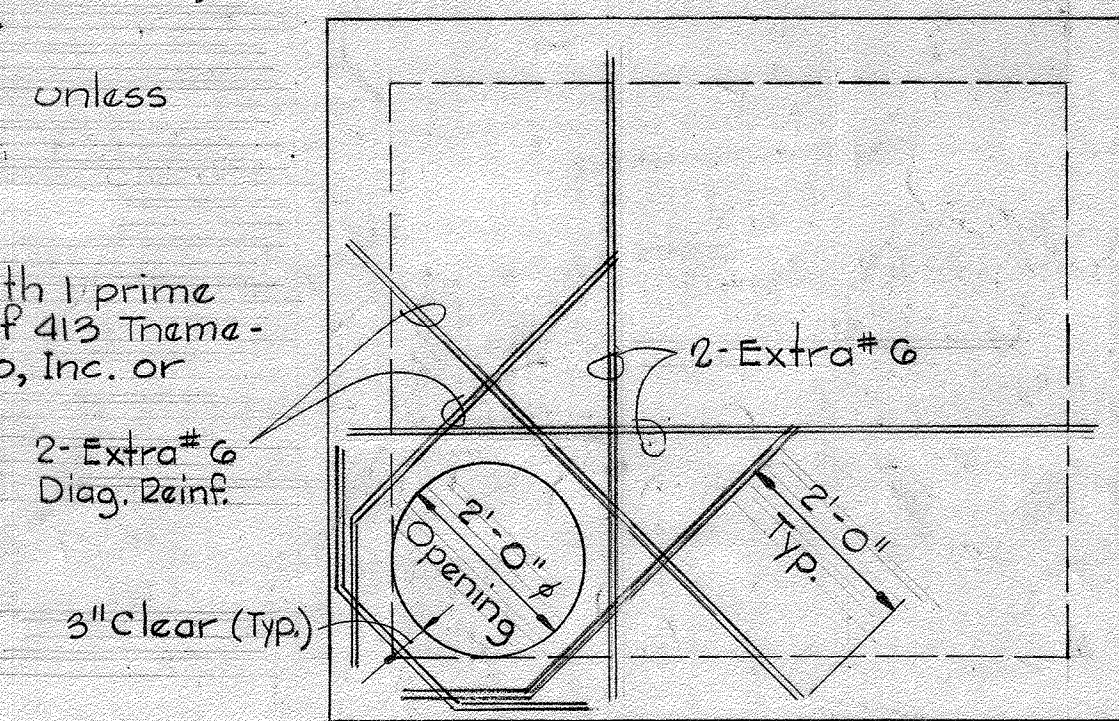
AS BUILT October 10, 1977

WS 640 13

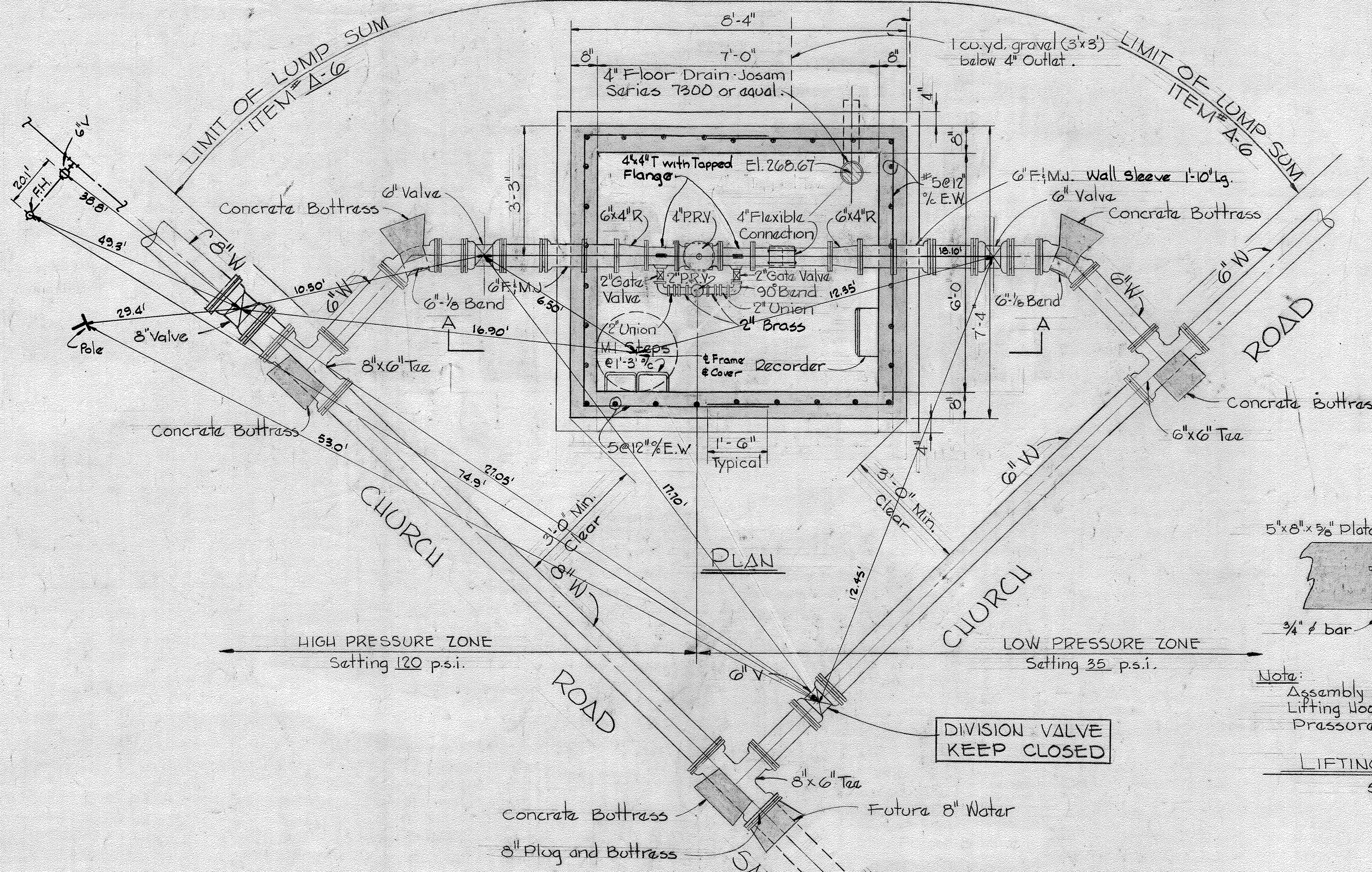
BRUNNEN 4-510 1832Z

GENERAL NOTES

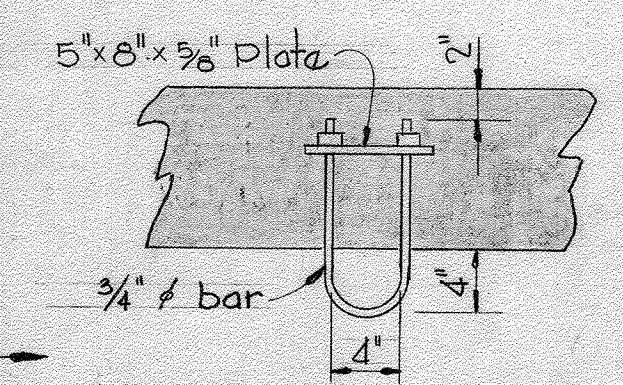
- All concrete shall be Class 'A', 3500 p.s.i. at 28 days.
- Reinforcing steel shall be intermediate grade (ASTM A-15) with deformations conforming to ASTM Specifications A-305.
- All bar laps shall be 30 diameters unless otherwise noted.
- 2" W is Brass.
- All exposed steel shall be painted with 1 prime coat of 77 Chem-Prime & 2 coats of 413 Tnemec-Tar as manufactured by Tnemec Co, Inc. or approved equal.



PLAN - TOP SLAB



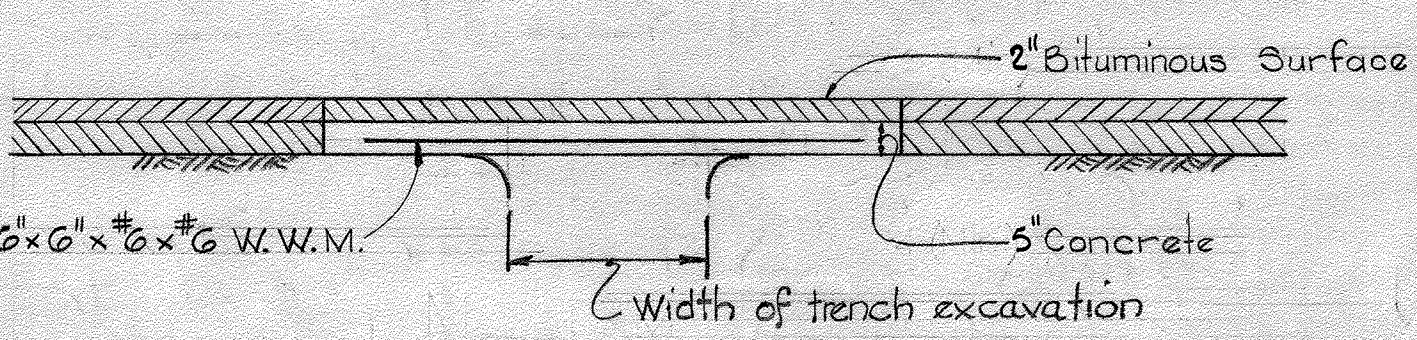
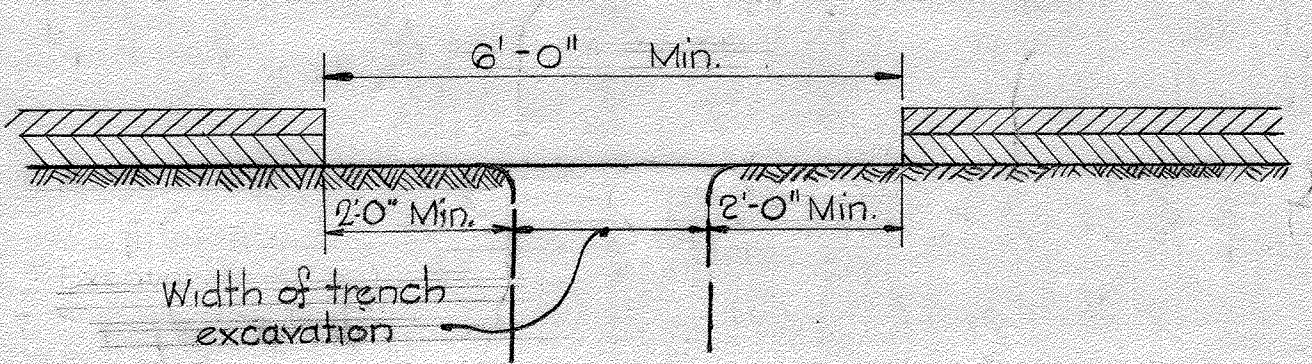
PLAN



Note: Assembly shall be hot dip galvanized. Lifting hook to be centered over Pressure Reducing Valve.

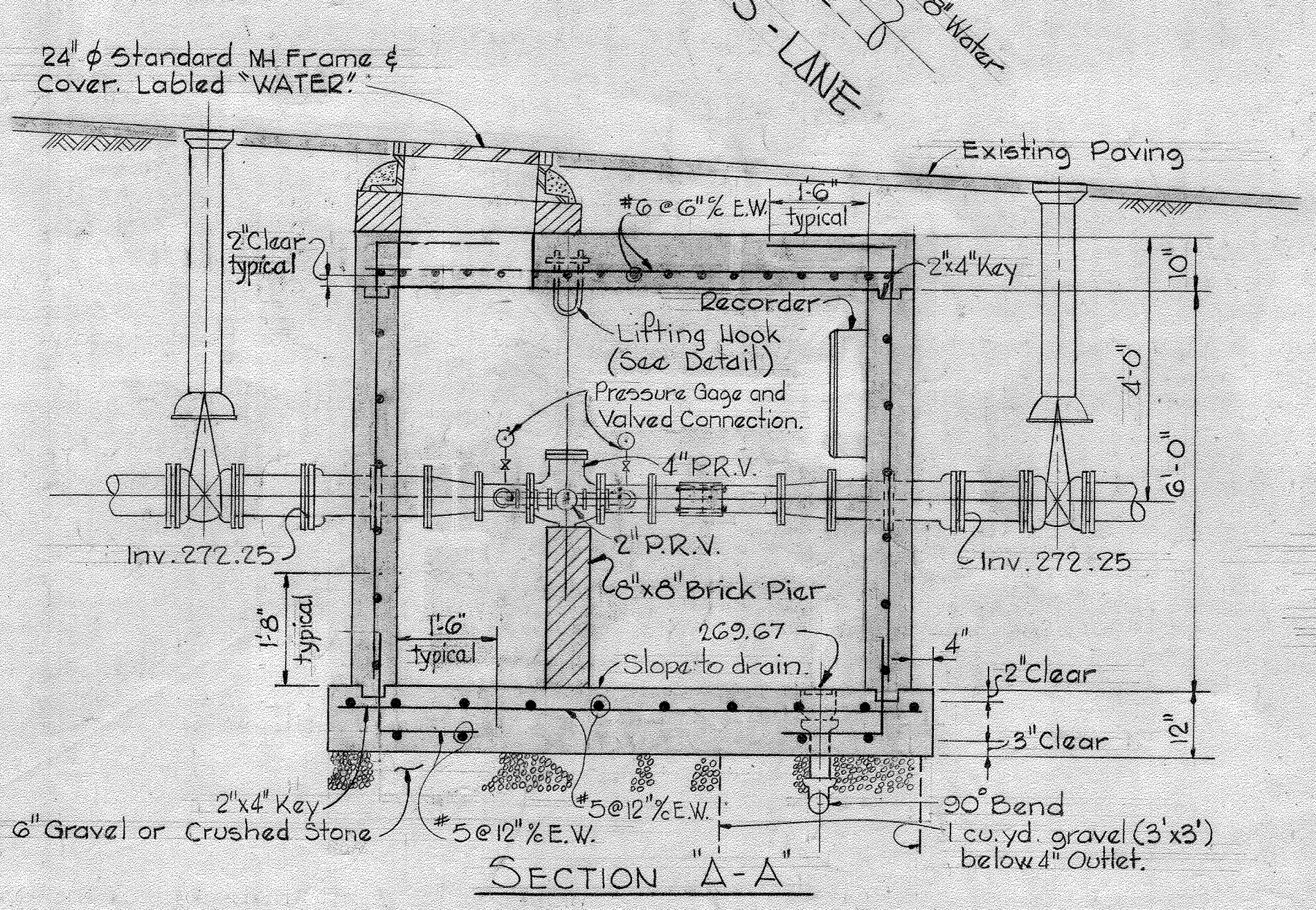
LIFTING HOOK DETAIL
Scale: 1" = 1'-0"

Note: Backfill in trench shall be material removed therefrom or better and shall be thoroughly compacted in 6" layers by tamping or by some other approved method before opening is paved. No excavations or cave-ins under existing surfacing will be permitted and no belling of the trenches will be allowed. Sheeting or shoring will be used when required by depth of trench or type of material. All concrete shall be Class "A" made with high early strength cement.



Note: All exposed edges of existing bituminous surface course and surface of concrete base shall be primed with a material satisfactory to the Engineer before the bituminous mixture is placed.

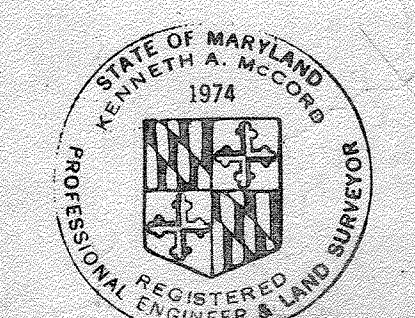
MACADAM ROADWAY
PAVING DEPLACEMENT DETAIL
Scale: 1/2" = 1'-0"



SECTION "A-A"

4" PRESSURE REDUCING VALVE VAULT
Scale: 1/2" = 1'-0"

Item	Manufacturer
4" PRV	Golden Anderson (45 D)
2" PRV	Golden Anderson (43 D)
Recorder	Fischer and Porter (Type 1102 P)



Kenneth A. McCord
Church Road
Project No. W4-8041
Contract No. 640-W

WHITMAN, REQUARDT & ASSOCIATES ENGINEERS 1304 ST. PAUL ST. BALTIMORE, MARYLAND	DEPARTMENT OF PUBLIC WORKS HOWARD COUNTY, MARYLAND 3-5-76	CONTRACT NO. 640-W PROJECT NO. W4-8041	DETAILS	ELECTION DISTRICT ELLICOTT CITY NO.2	DRAWING NO. 4 OF 4 SCALE AS SHOWN
---	---	---	---------	---	--------------------------------------

W.O. 6935-2

AS BUILT October 10, 1977

WS 640 W/14

BRUNING 44510 1835Z