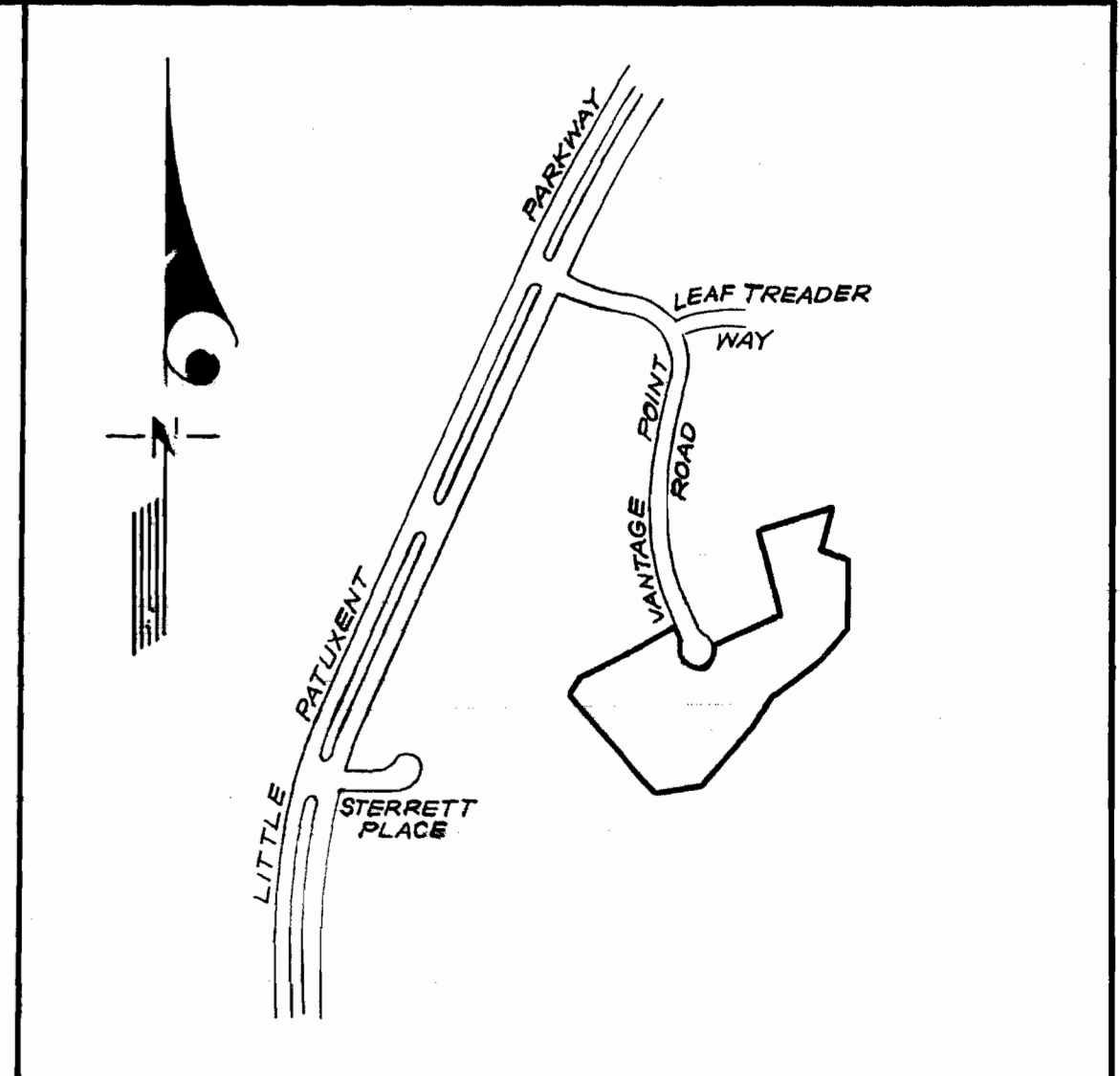
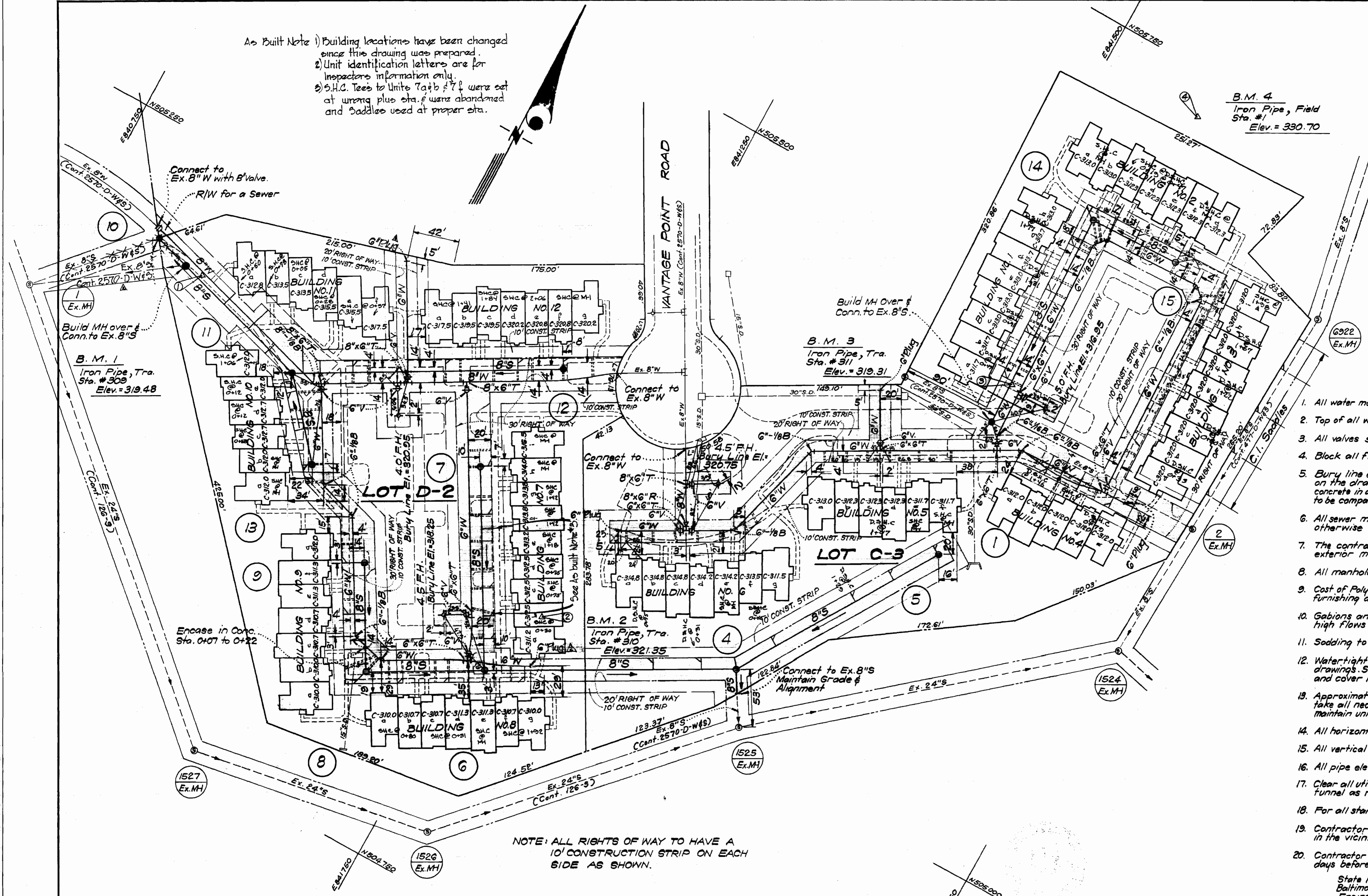


As Built Note 1) Building locations have been changed since this drawing was prepared.  
 2) Unit identification letters are for inspectors information only.  
 3) S.H.C. Tees to Units 7a+b & 7f were cut at wrong plus sta. & were abandoned and Saddles used at proper sta.



**GENERAL NOTES**

- All water mains to be C.I.P., D.I.P., or A.C.P. unless otherwise shown.
- Top of all water mains to have a minimum of 3 1/2 feet cover unless otherwise noted.
- All valves shall be strapped to tees in accordance with standard details.
- Block all fittings with concrete, see standards bound in specifications.
- Bury line elevations on fire hydrants shall be set to the elevations shown on the drawings. All fire hydrants shall be strapped and buttressed with concrete in accordance with standard details. Soil around the fire hydrant to be compacted in accordance with Section 5-15 of the Standard Specifications.
- All sewer mains shall be C.S.R.X., V.C.P.X., or A.C.P. Class 2400 unless otherwise noted.
- The contractor shall provide a joint in all sewer mains within 2'-0" of exterior manhole wall.
- All manholes shall be 4'-0" inside diameter, unless otherwise noted.
- Cost of Polyfilter X and rip rap to be included in the unit price bid for furnishing and laying of sewer mains.
- Gabions and Reno Mattresses in flood plains which will be subjected to high flows may be used in place of rip rap.
- Sodding to be provided in areas of low flow.
- Watertight manhole frame and cover to be used where indicated on drawings. Standard Detail S-12 (RCR-63A). Where watertight manhole frame and cover is used, set top of frame 1'-6" above finished grade.
- Approximate locations of existing mains are shown. The contractor shall take all necessary precautions to protect existing mains and services and maintain uninterrupted supply. Any damage incurred shall be repaired immediately.
- All horizontal controls are based on Maryland State Coordinates.
- All vertical controls are based on U.S.G.S. Datum.
- All pipe elevations shown are invert elevations.
- Clear all utilities by a minimum of 6" Clear all poles 2'-0" minimum or tunnel as required.
- For all standard details see standards bound in specifications.
- Contractor shall locate existing utilities in advance of construction operations in the vicinity of proposed utilities.
- Contractor shall notify the following utilities or agencies at least five (5) days before starting work shown on these plans:
  - State Highway Administration - 531-5533
  - Baltimore Gas and Electric Company - Underground Electric Distribution Engineering - "Damage Control" - 234-5681
  - Baltimore Gas and Electric Company - Underground Gas Distribution Engineering - 553-0100
  - Chesapeake and Potomac Telephone Co. - 725-9976
  - American Telephone and Telegraph - Cable Location Division - 301-393-3553
  - Colonial Pipeline Company - 781-4641
- Trees are to be protected from damage to maximum extent. Trees located within the construction strip are not to be removed or damaged by the contractor.
- Contractor shall remove trees, stumps and roots along line of excavation as directed by the Engineer. Payment for such removal shall be included in the unit price bid for excavation and backfill for water and sewer mains.
- Place regulation "Men Working" and warning signs as required to comply with Maryland State Highway Administration Manual of Traffic Control for Highway Construction and Maintenance Operations.



NOTE: ALL RIGHTS OF WAY TO HAVE A 10' CONSTRUCTION STRIP ON EACH SIDE AS SHOWN.

**STATE OF MARYLAND**  
**WALTER PAUL FINEFROCK**  
 REGISTERED PROFESSIONAL ENGINEER  
*Walter P. Finefrock*  
 11/27/74

ITEM	QUANTITY
8" Sewer	1610 L.F.
6" Water	1970 L.F.
8" Water	555 L.F.
Fire Hydrants	4

COLUMBIA TOWN CENTER  
 SECTION 7 AREA 7  
 LOTS C-3 & D-2  
 CONTRACT 2636-D-W&S

Rev. No.	Rev. Date	Rev. Description
1		As Built
2		Lowered Grade of Parking Lots in Lot D-2 area.

**CLARK • FINEFROCK & SACKETT**  
 ENGINEERS • PLANNERS • SURVEYORS  
 3175 LOCKWOOD DRIVE SILVER SPRING, MARYLAND 20906

DEPARTMENT OF PUBLIC WORKS  
 HOWARD COUNTY, MARYLAND  
 CONTRACT NO. 2636-D-W&S  
 DATE 2-6-75  
*W. O. Pellet*  
 CHIEF BUREAU OF ENGINEERING

PLAN OF WATER & SEWER MAINS

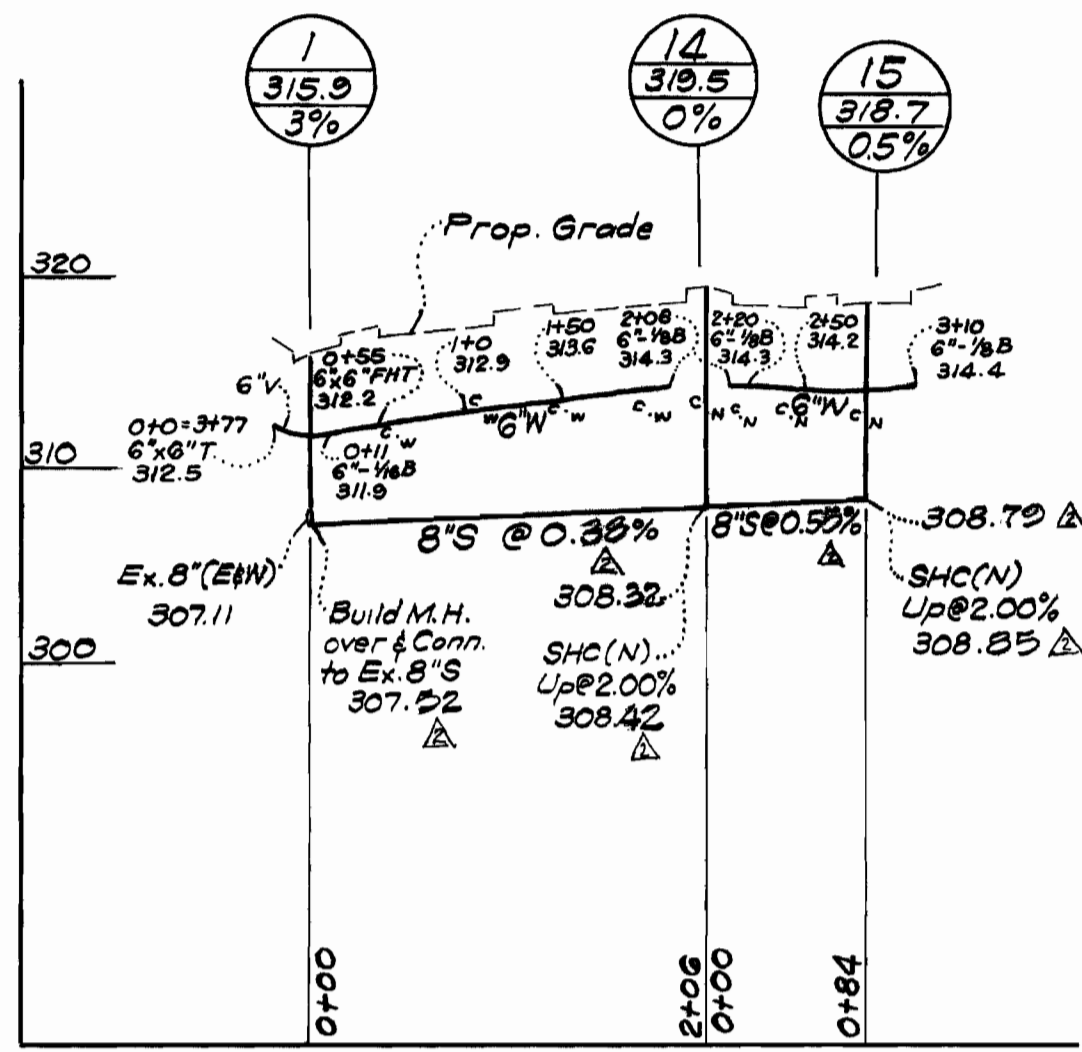
COLUMBIA TOWN CENTER  
 ELECTION DISTRICT-CLARKSVILLE No.5

DRAWING NO. 1 OF 2  
 SCALE 1"=50'

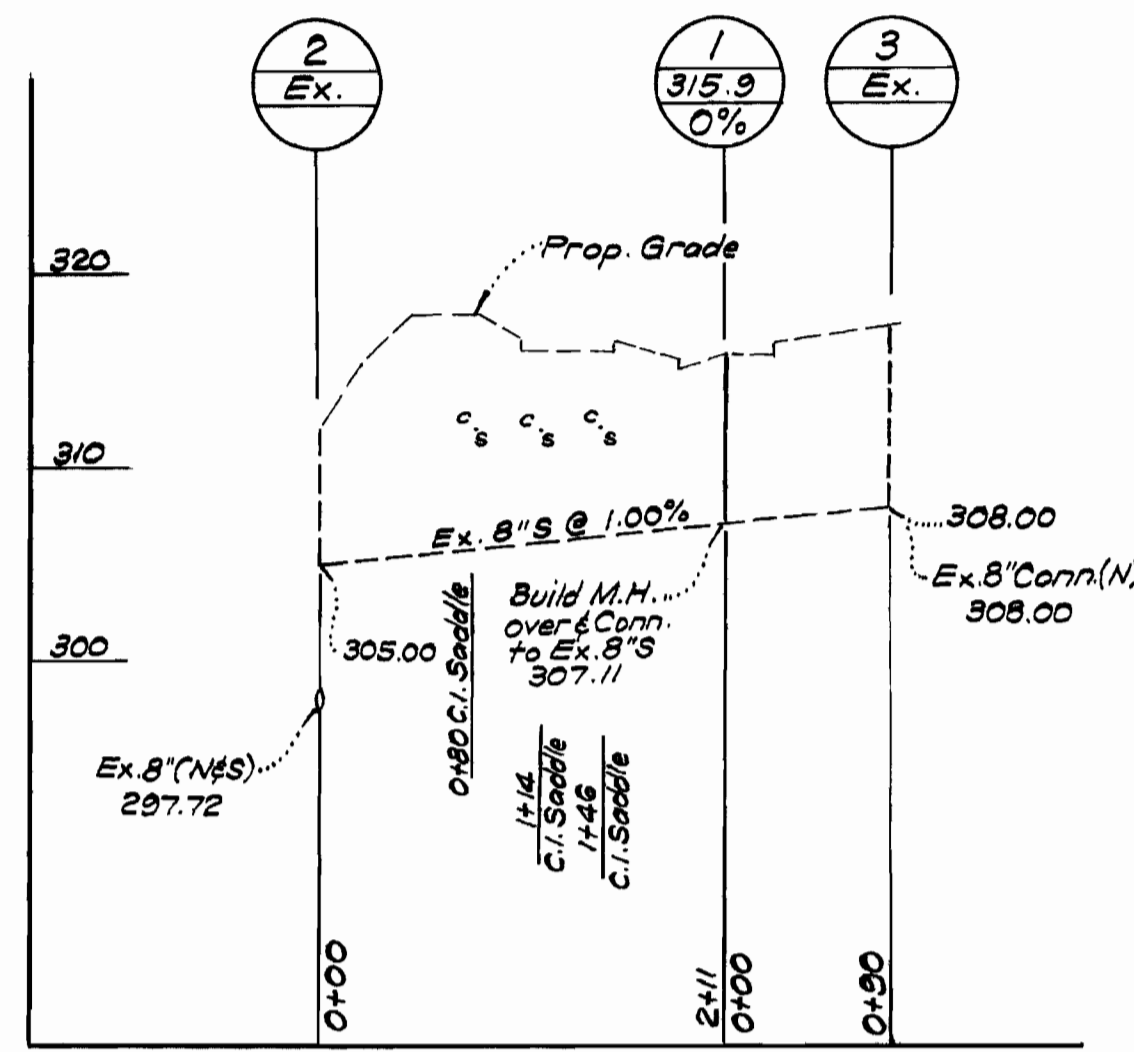
Revised 4-23-75 by C.F.S. m.w.  
 10  
 As Built G-16-75 M.W.

LOT C-3

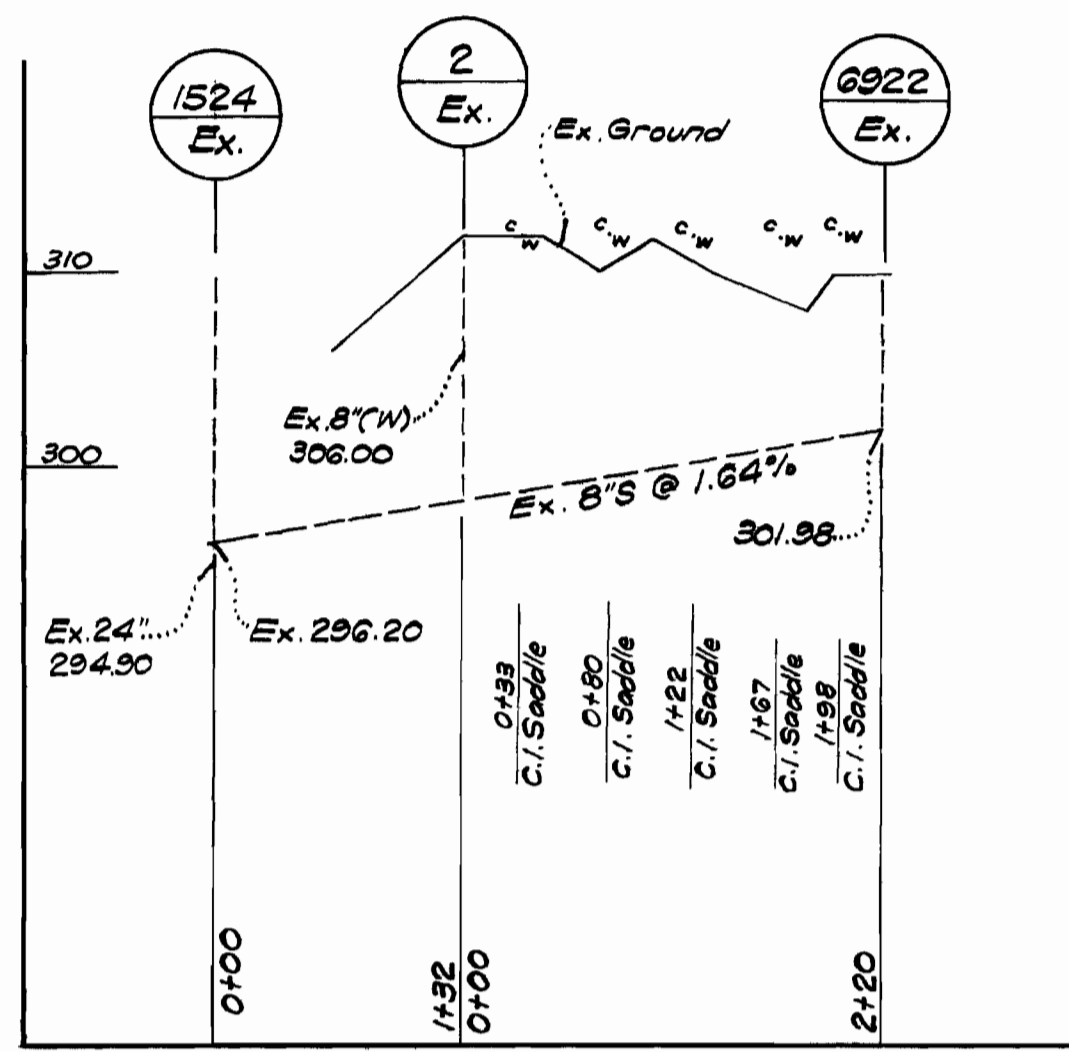
FRONT BLDG. NOS. 1 & 2



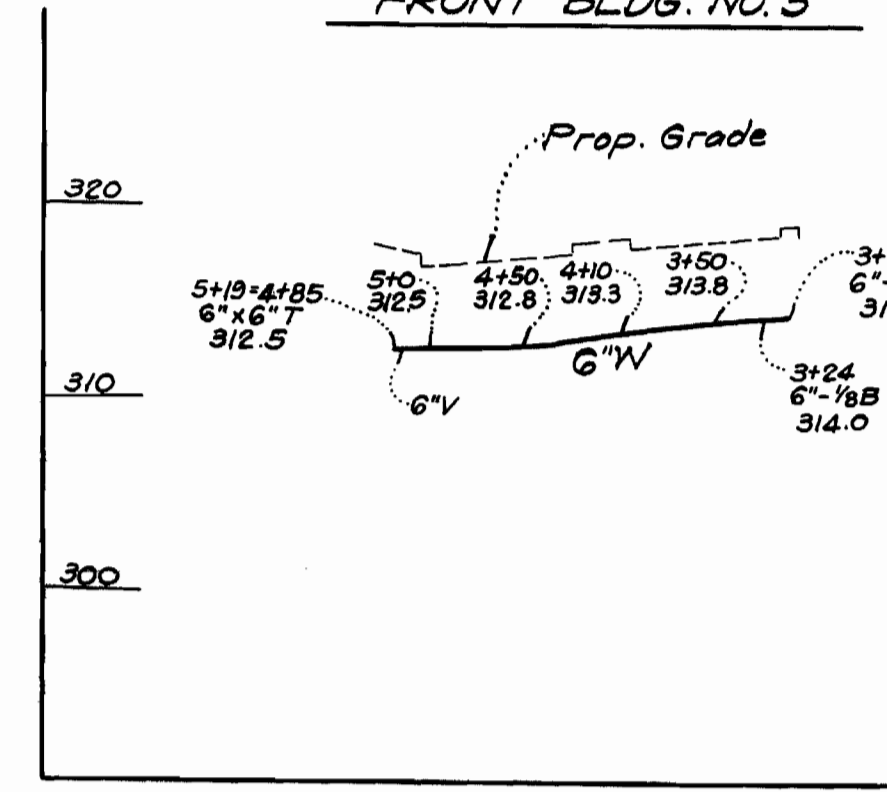
FRONT BLDG. NO. 4



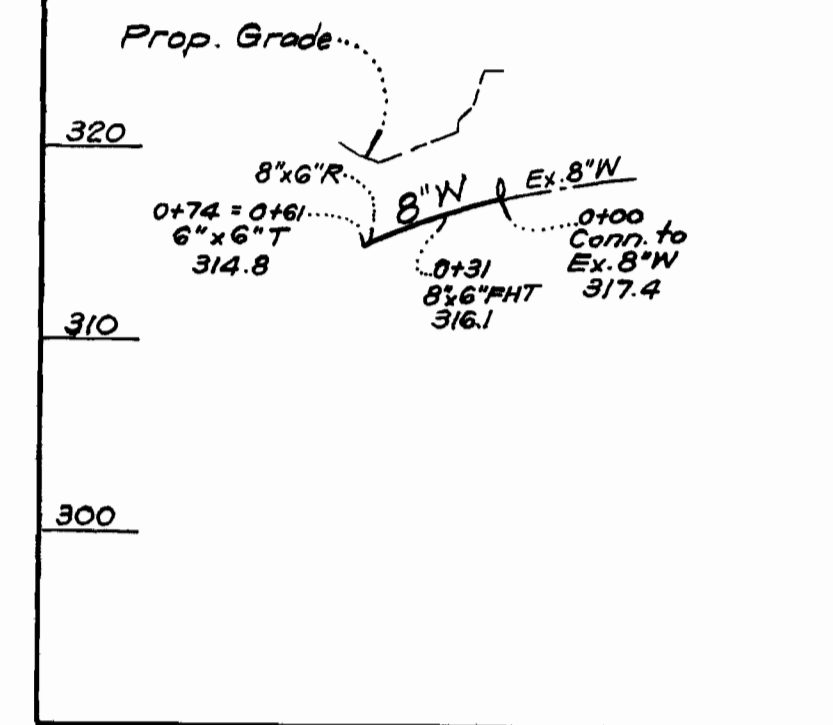
REAR BLDG. NO. 3



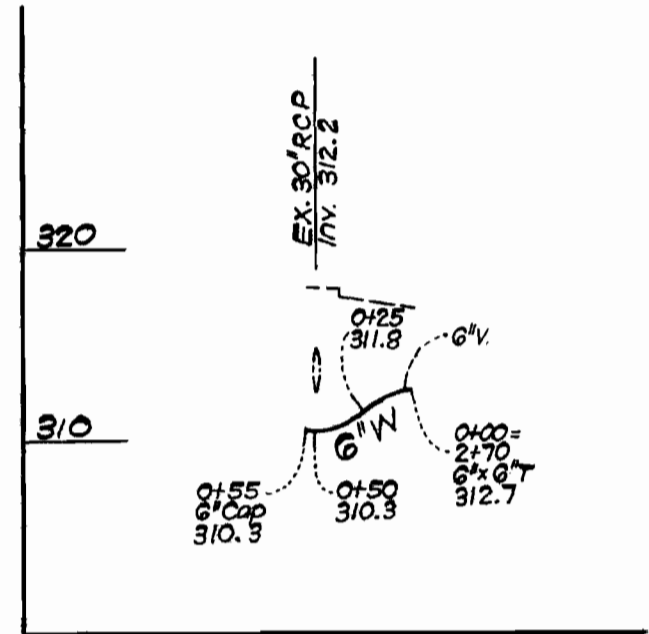
FRONT BLDG. NO. 3



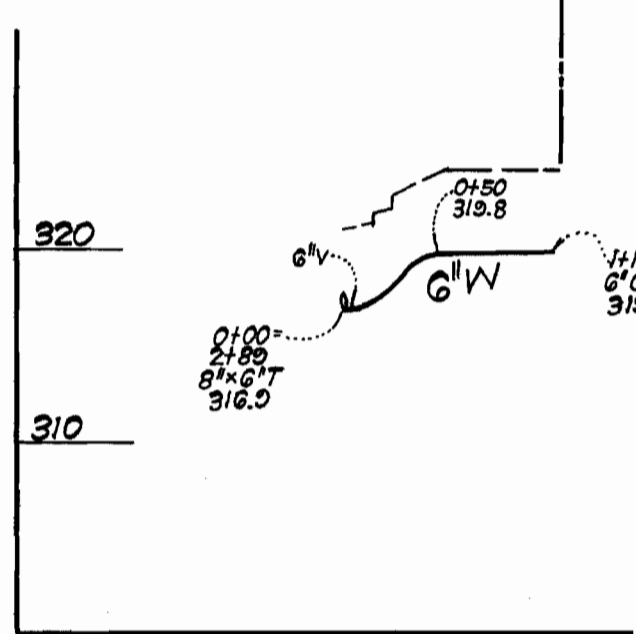
VANTAGE POINT ROAD EXT.



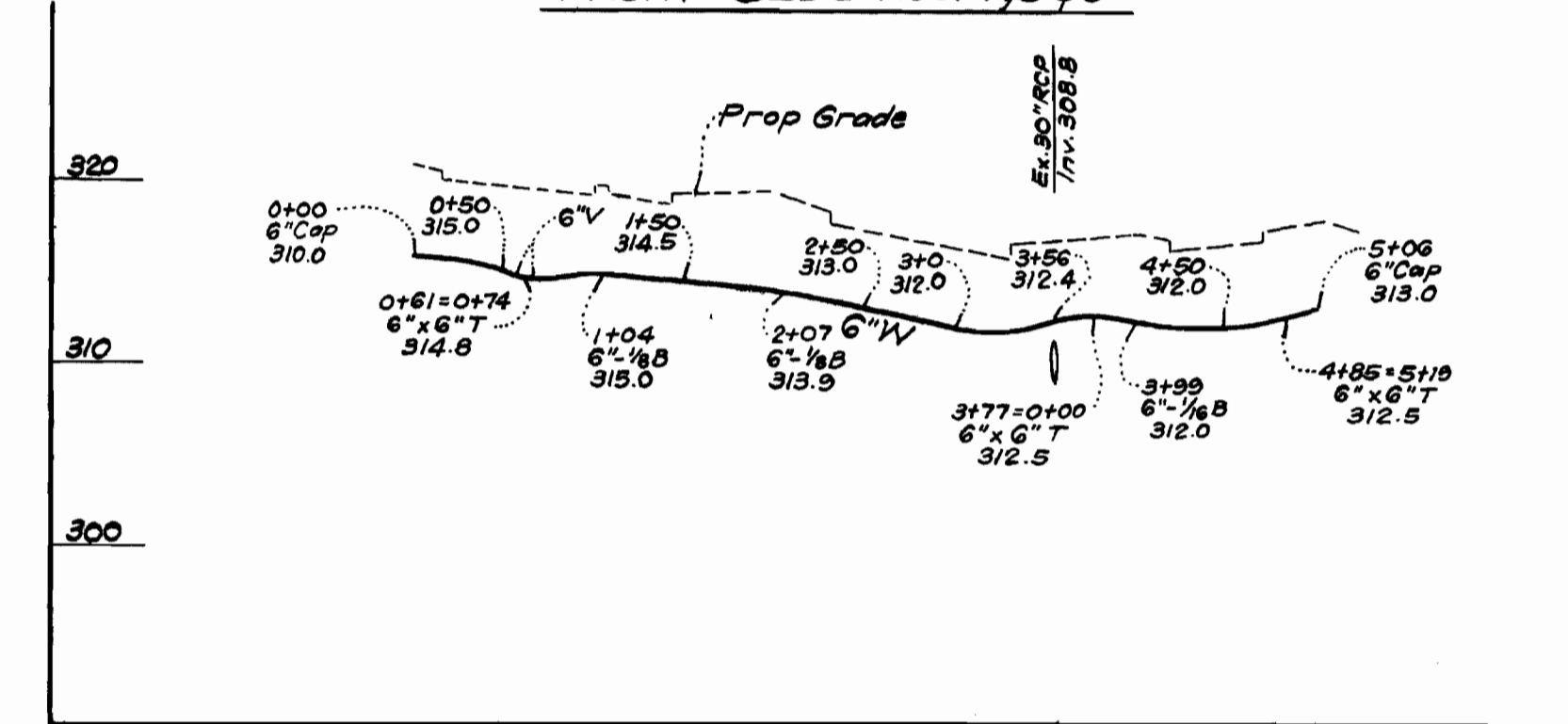
G'W OPPOSITE BLDG. NO. 5



BETWEEN BLDGS. NO. 11 & 12

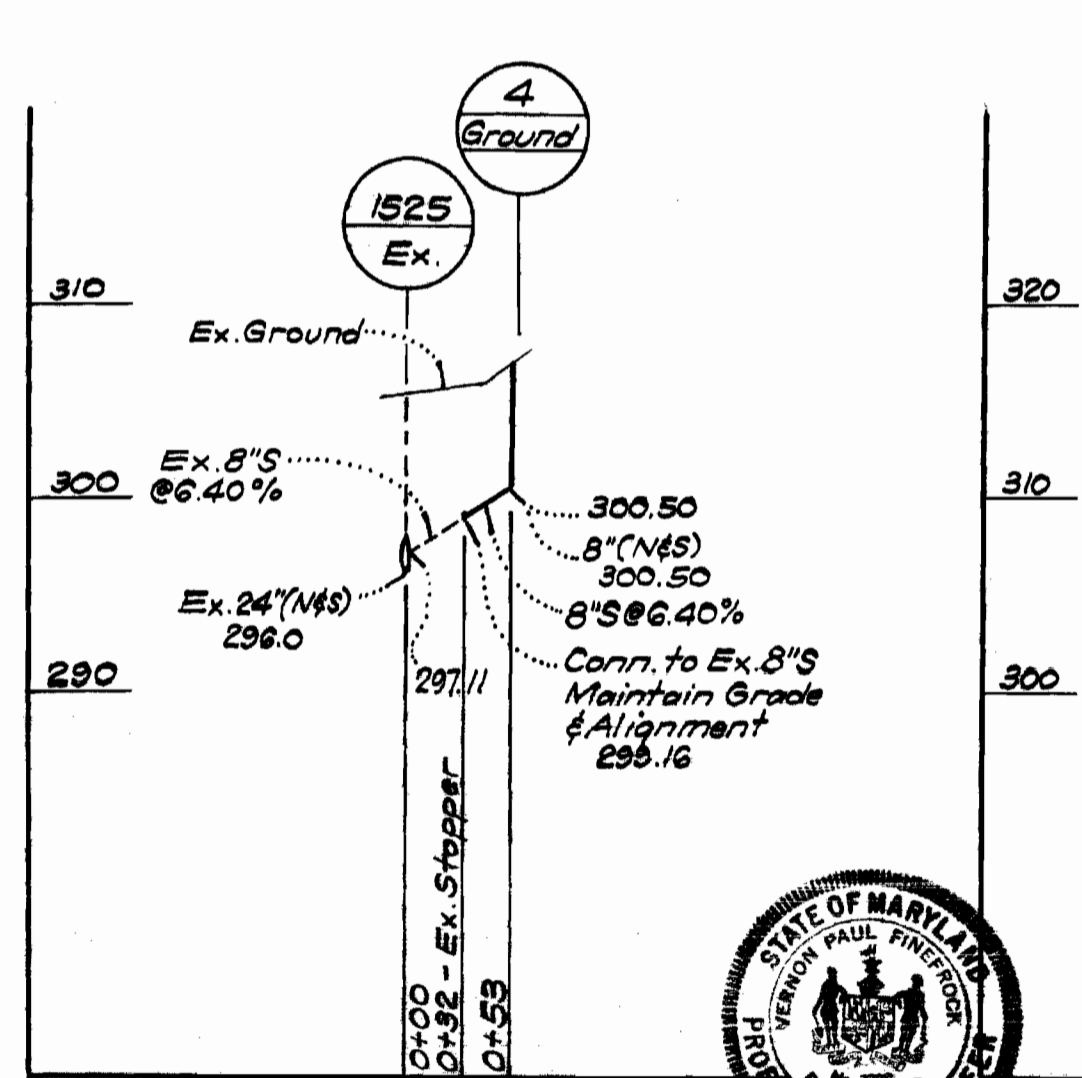


FRONT BLDG NOS. 4, 5 & 6

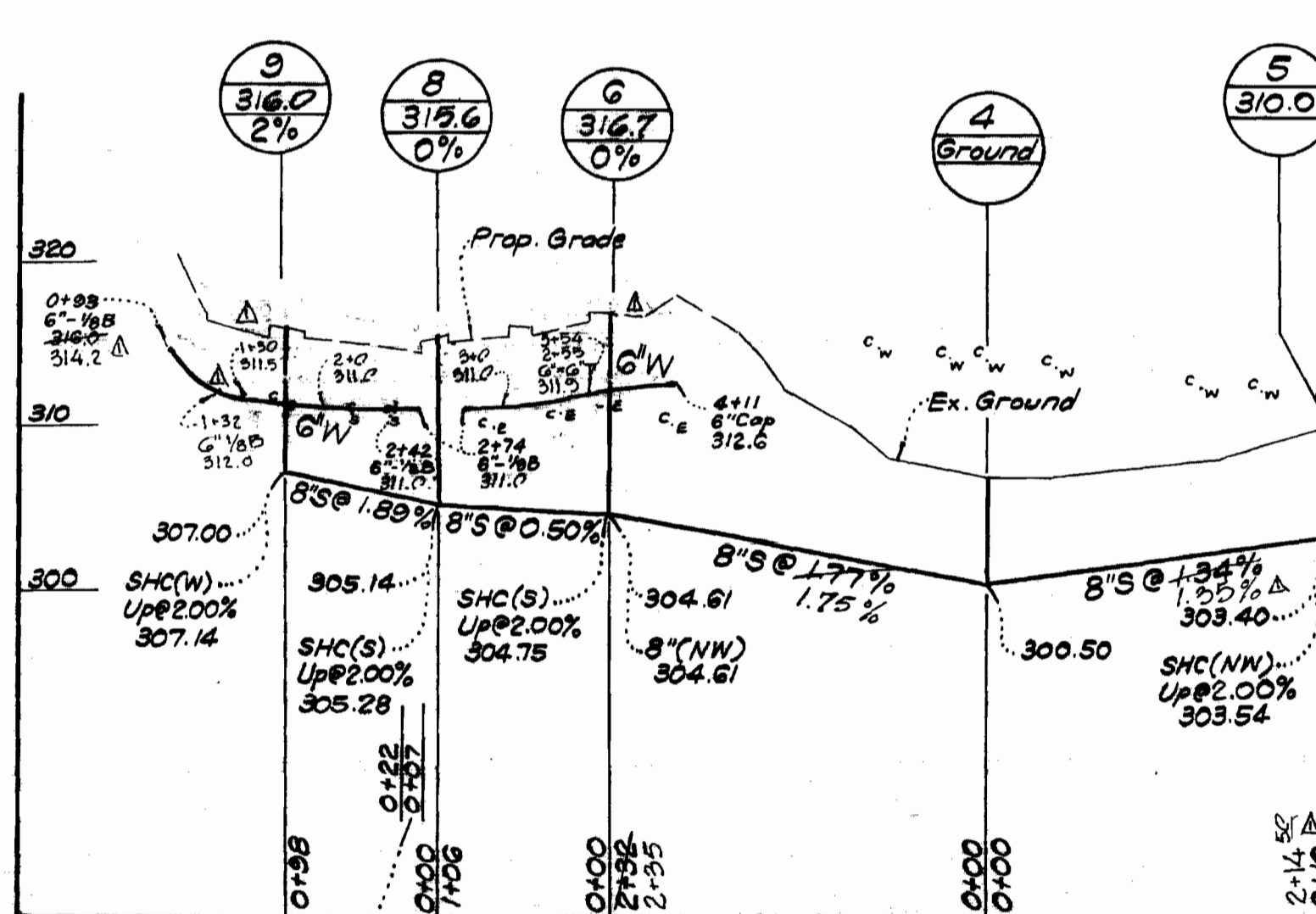


LOT D-2

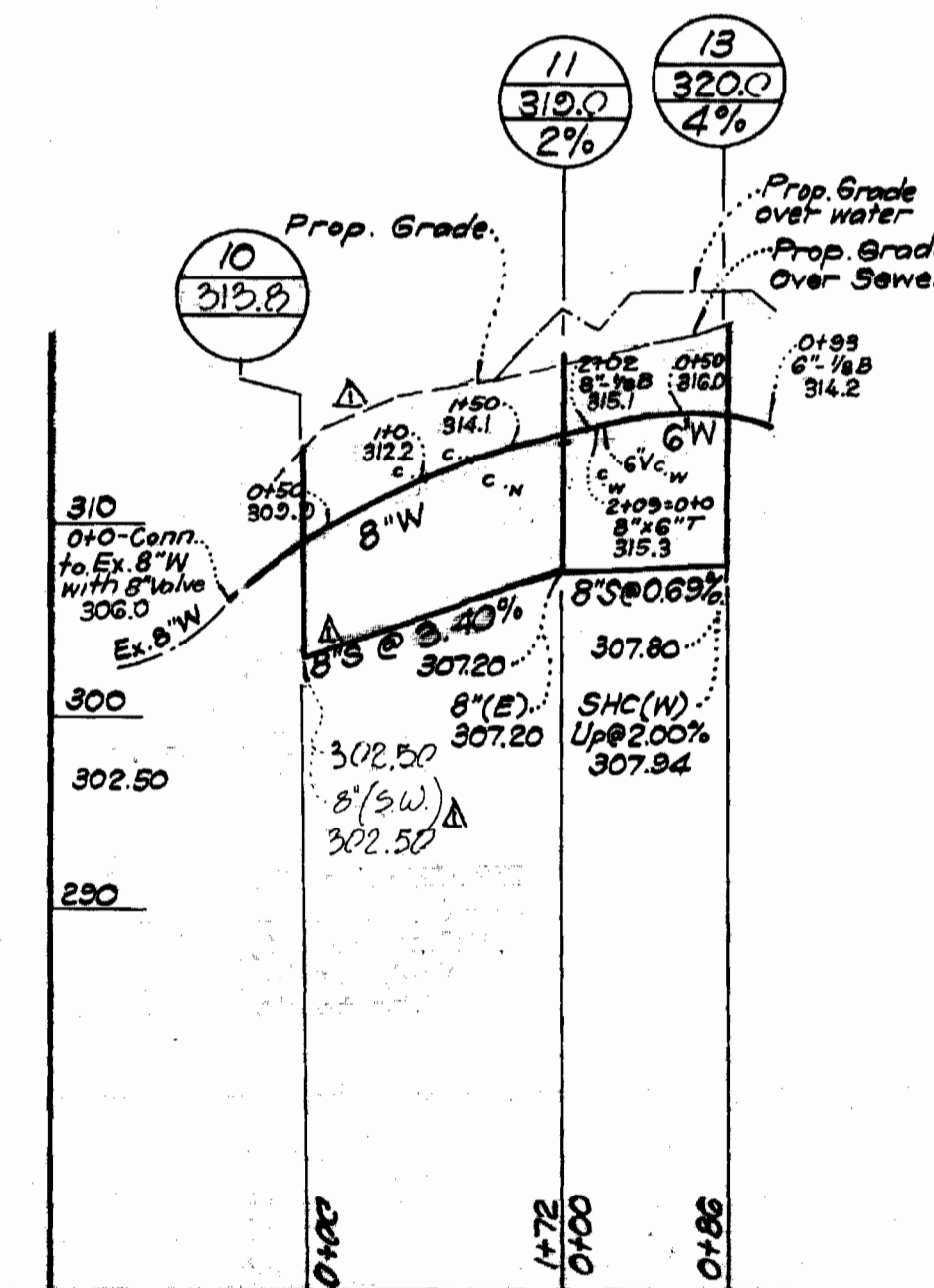
FRONT BLDG. NO. 7



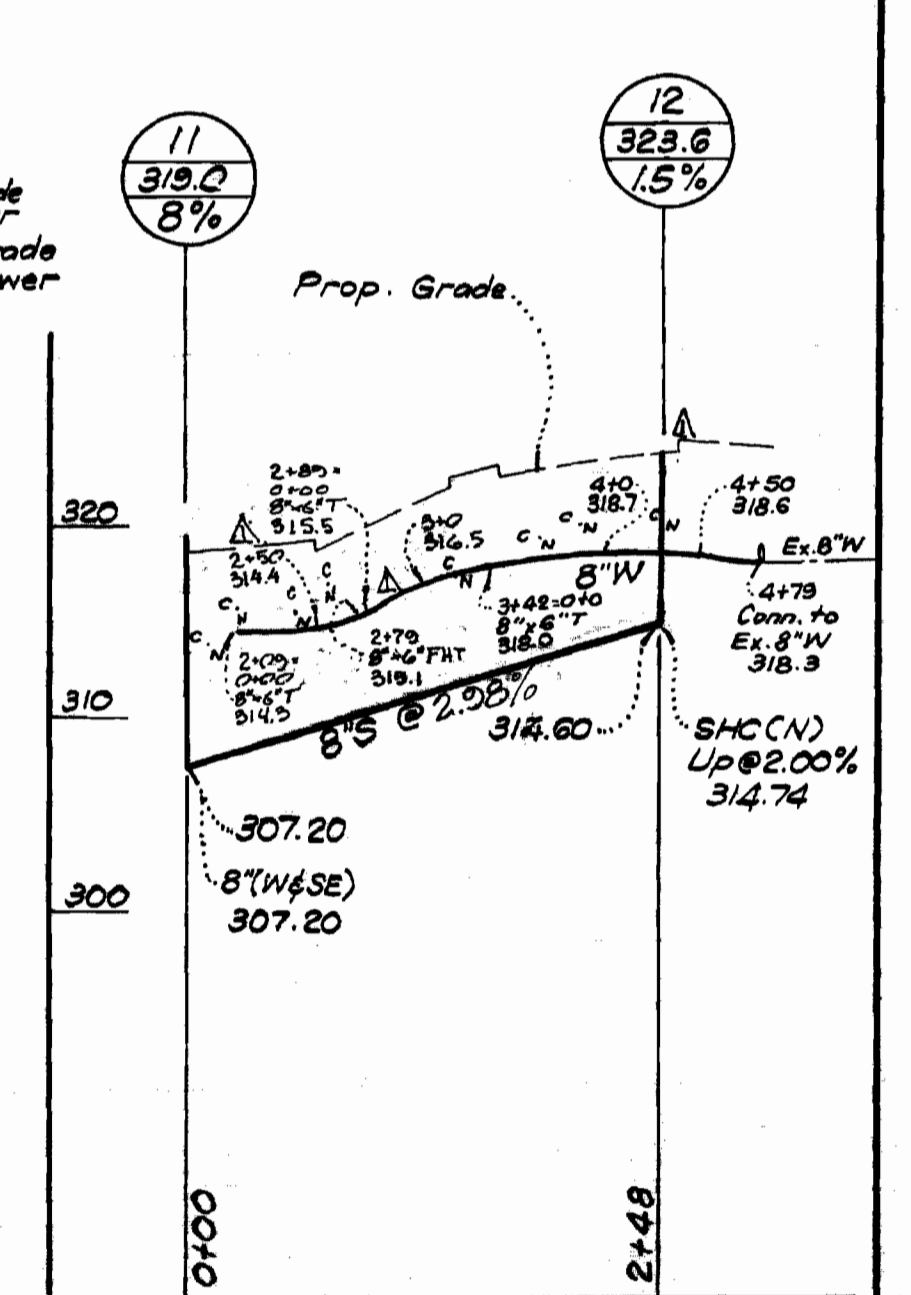
FRONT BLDG. NOS. 8 & 9



FRONT BLDG. NO. 10



FRONT BLDG. NOS. 11 & 12



James R. Finis  
11/27/74

Encase in Concrete

4-16-75	As Built
4-16-75	Lowered Grade of Parking Area in Vicinity Lot D-2
Rev. Date	Rev. No.
	Revision Description

**CLARK • FINEROCK & SACKETT**  
ENGINEERS • PLANNERS • SURVEYORS  
11815 LOCKWOOD DRIVE SILVER SPRING MARYLAND 20904

DEPARTMENT OF PUBLIC WORKS  
HOWARD COUNTY, MARYLAND  
DATE **2-6-75**  
*W O Falbert*  
CHIEF BUREAU OF ENGINEERING

CONTRACT NO. 2636 D-WBS

PROFILES OF  
WATER & SEWER MAINS

COLUMBIA  
TOWN CENTER  
ELECTION DISTRICT-CLARKSVILLE No. 5

DRAWING  
NO. 2  
OF 2  
SCALE  
HOR. 1"=100'  
VER. 1/4"=10'

Revised 4-16-75 by C.F.45 m.w.  
As Built 6-16-75 m.w.

WS 636 - W&S/2