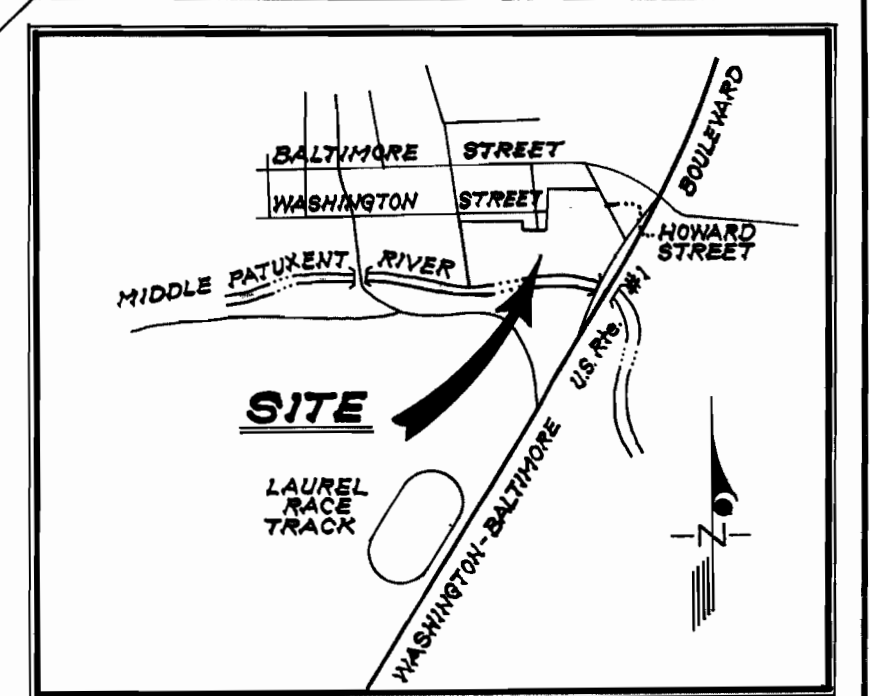
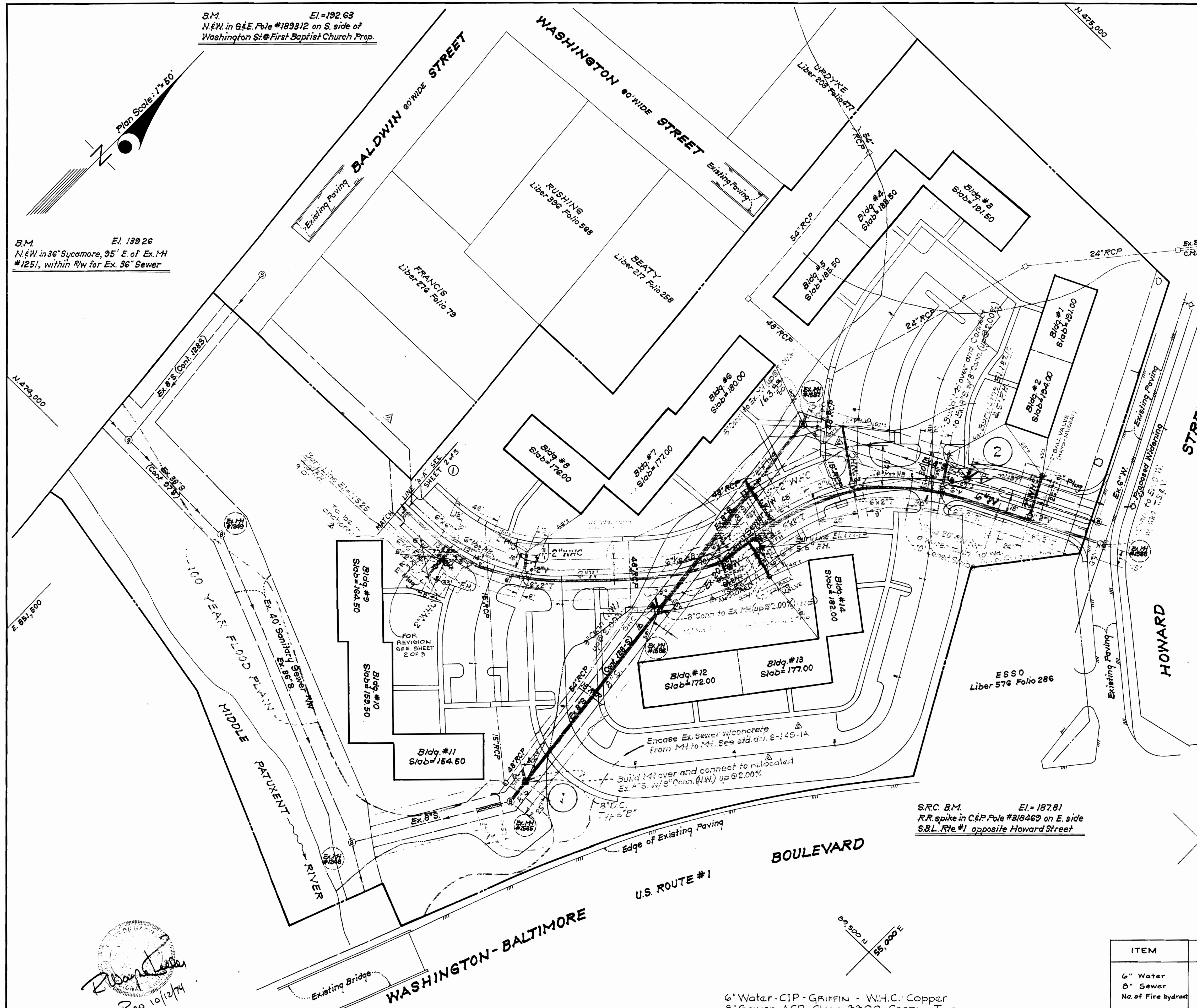


B.M. El. = 192.63
N.&W. in 6 1/2' E. Pole #189312 on S. side of
Washington St. @ First Baptist Church Prop.

B.M. El. 139.26
N.&W. in 36' Sycamore, 95' E. of Ex. M.H.
#1251, within R/W for Ex. 36" Sewer



VICINITY MAP
SCALE: 1" = 2,000'



GENERAL NOTES

1. Approximate locations of existing mains are shown. The contractor shall take all necessary precautions to protect existing mains and services and maintain uninterrupted supply. Any damage incurred shall be repaired immediately.
2. All pipe elevations are invert elevations.
3. The contractor shall locate existing utilities a minimum of two weeks in advance of construction operations in vicinity of utilities.
4. For all standard details, see standards bound in specifications.
5. Clear all utilities by a minimum of 6'. Clear all poles by a 2'-0" min. or tunnel as required.
6. The contractor shall provide a joint in all sewer mains within 2'-0" of exterior manhole walls.
7. All manholes shall be 4'-0" inside diameter, unless otherwise noted.
8. All water mains to have a minimum of 3 1/2' of cover unless otherwise noted.
9. Block all fittings with concrete; standards bound in specifications.
10. Bury line elevations on fire hydrants shall be set to the elevations shown on the drawings.
11. All fire hydrants shall be strapped to the tee and shall be buttressed with concrete in accordance with standard details.
12. All horizontal and vertical controls are based on Maryland State Datum.
13. Water services shall be inside meter settings.
14. All water mains shall be C.I.P., D.I. or A.C.P. unless otherwise noted.
15. Contractor shall notify the Baltimore Gas and Electric Co. 72 hours in advance, prior to any construction in the vicinity of any gas and electric facilities by calling 539-8000, ext. 69. The contractor shall notify the C.&P. Telephone Co. prior to any construction in the vicinity of any Telephone Co. facilities by calling collect 685-0400 in Baltimore.
16. Trees are to be protected from damage to maximum extent.
17. All valves shall be strapped to tees in accordance with standard details.
18. All sewer mains shall be C.S.P.X., V.C.P.X., or A.C.P. Class 2400 unless otherwise noted.

S.R.C. B.M. El. = 187.81
R.R. spike in C.&P. Pole #318469 on E. side
S.B.L. Rte. #1 opposite Howard Street

[Signature]
200 10/12/74

ITEM	QUANTITY
6" Water	424 ① 1124 LF
8" Sewer	469 462 LF
No. of Fire hydrant	3

For additional info. see Field Copy.

Rev. Date	No.	Description
12-21-76	①	Added various words to detail details
12-21-76	②	Changed Note # 12
12-21-76	③	Rev. W. R/W Alignment to match Shl. # 203
5/6/75	④	

R. WAYNE KEELER & ASSOC., INC.
CONSULTING CIVIL ENGINEERS
416 HUNGERFORD DRIVE
ROCKVILLE, MARYLAND 20850
TELEPHONE: 301-782-0200

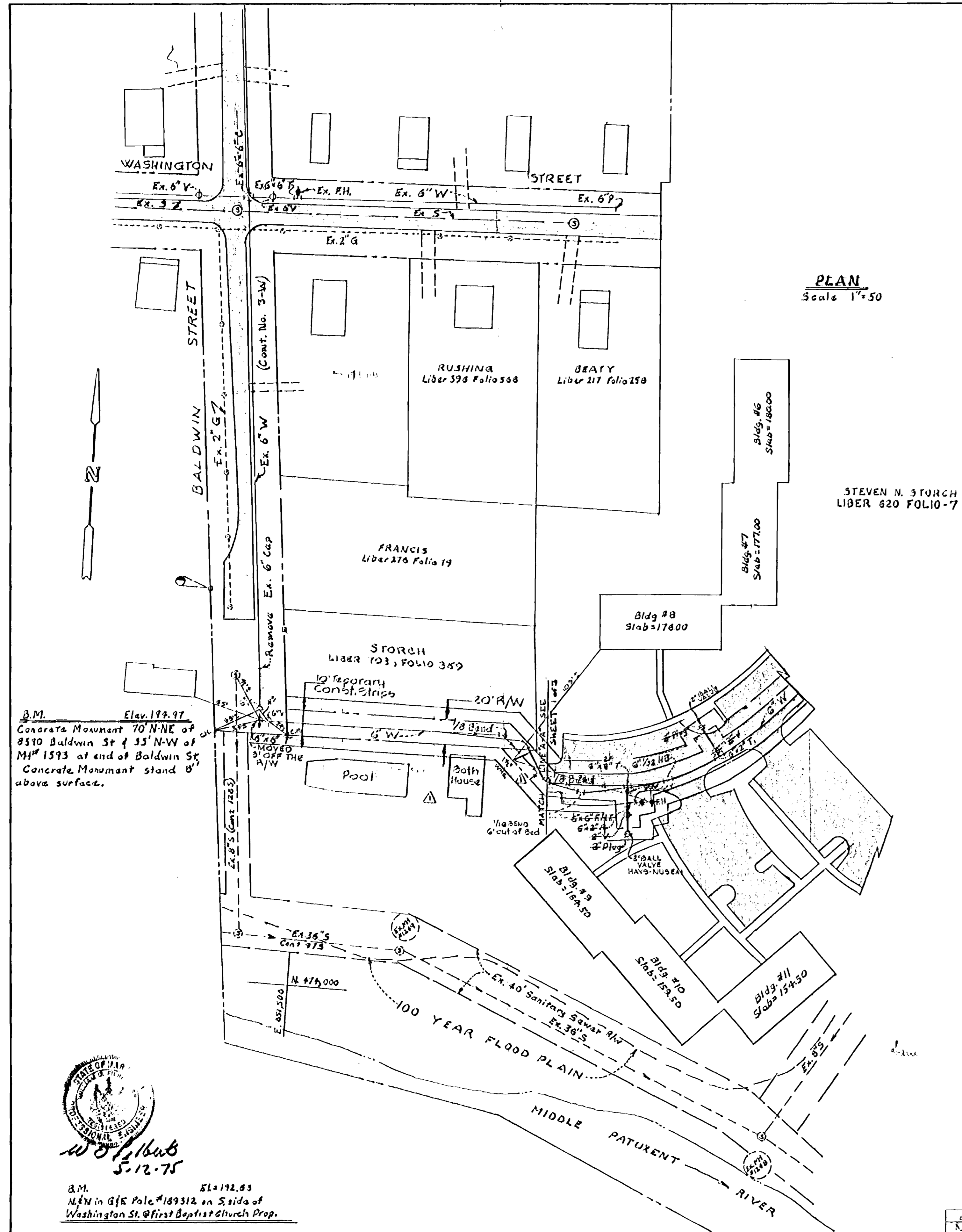
DEPARTMENT OF PUBLIC WORKS
HOWARD COUNTY, MARYLAND
1-6-75
DATE
W. O. Lambert
CHIEF BUREAU OF ENGINEERING

CONTRACT NO. 1631-D-N-65

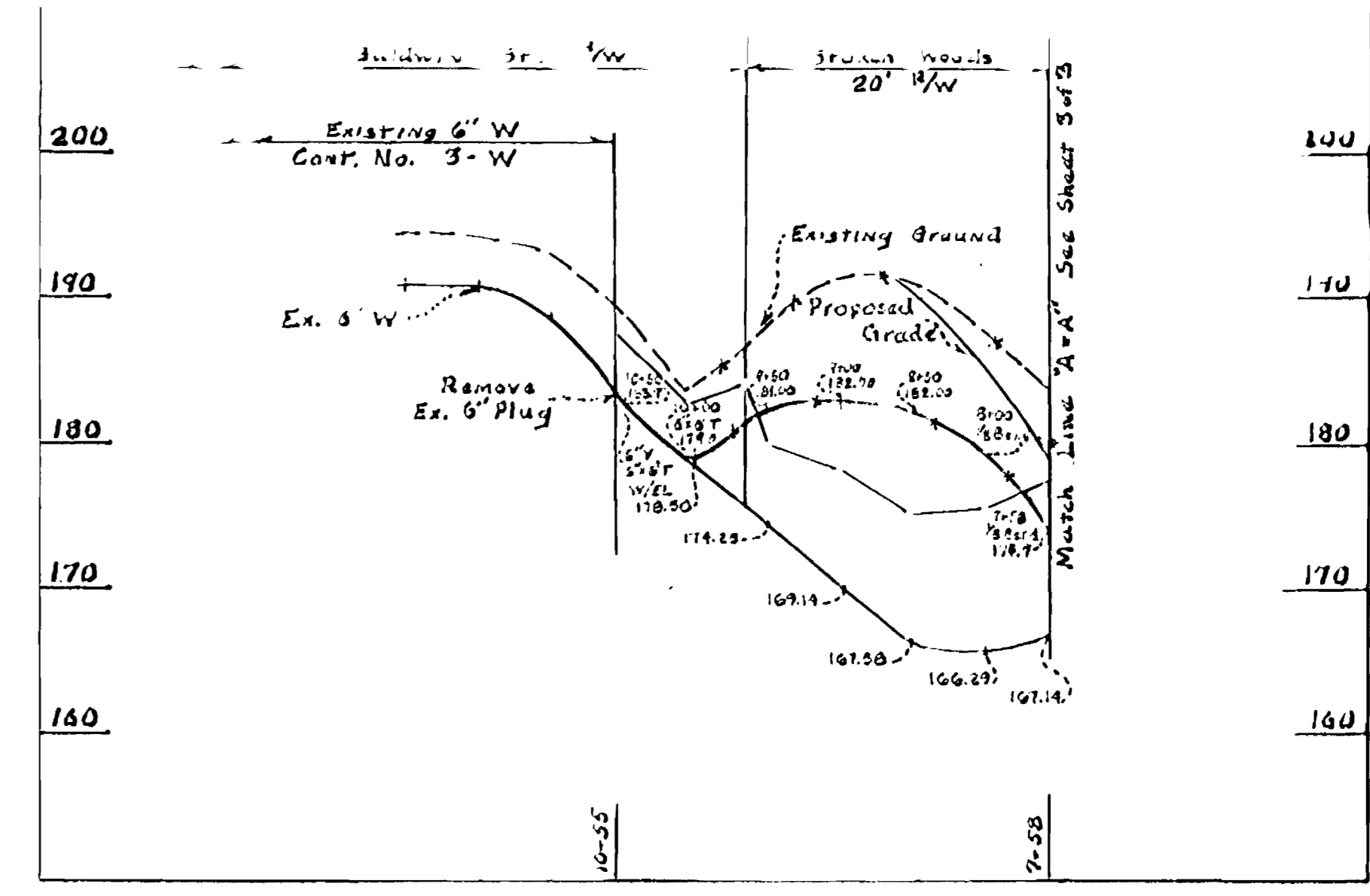
PLAN OF
WATER AND SEWER MAINS

STORCH WOODS
SECTION ONE
SIXTH ELECTION DISTRICT
SAVAGE, MARYLAND

DRAWING NO. 1 OF 3
SCALE AS SHOWN



PLAN
Scale 1"=50'



PROFILE
SCALE VERT 1"=10'
HORT 1"=100'

B.M. Elev. 199.97
Concrete Monument 10' N-NE of
2510 Baldwin St & 55' N-W of
MH# 1593 at end of Baldwin St.
Concrete Monument stand 8'
above surface.

W.D. Gilbert
3.12.75

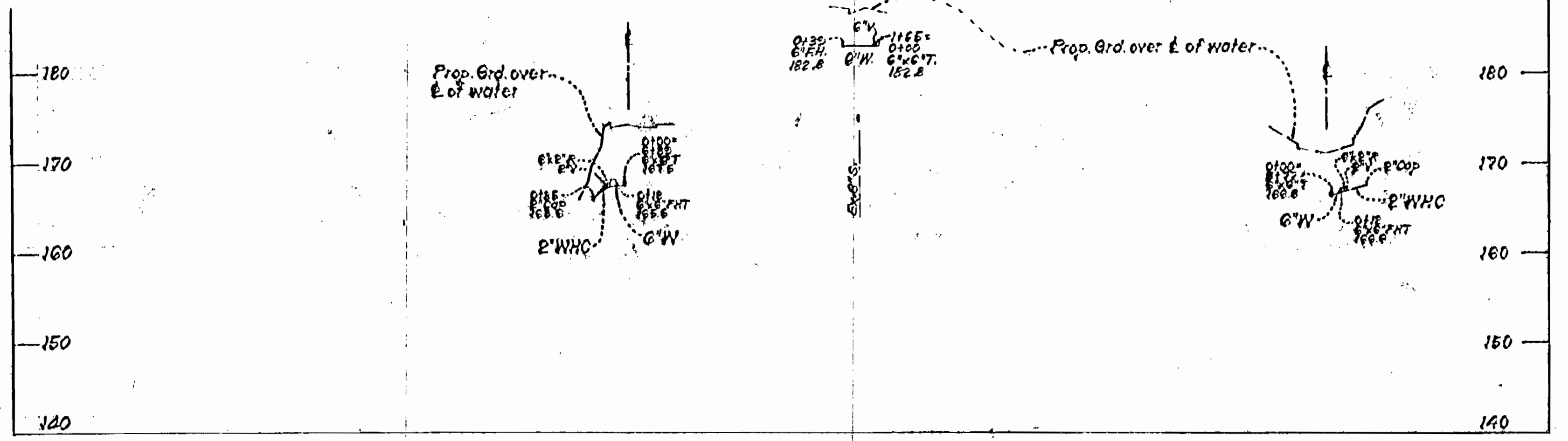
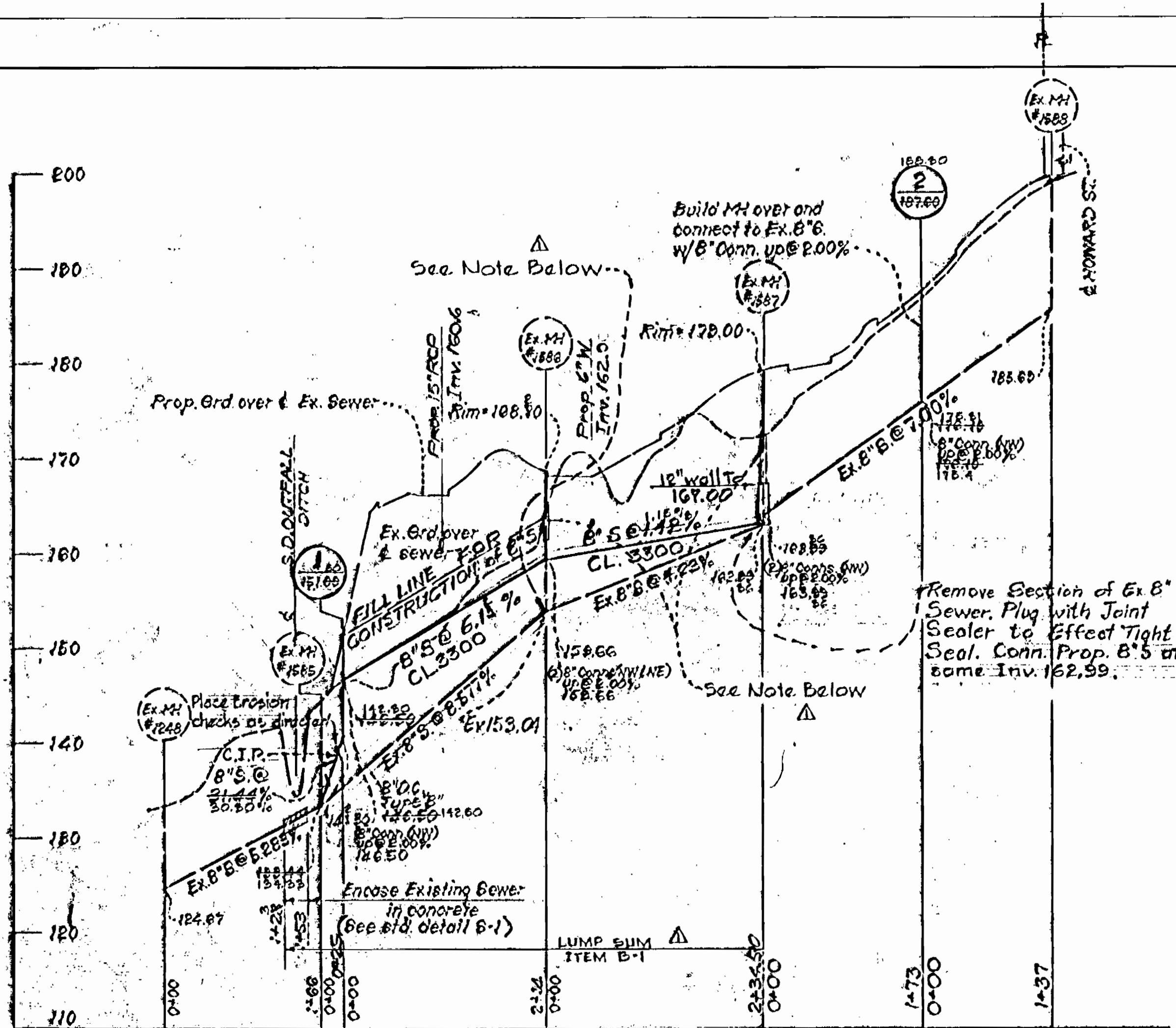
B.M. Elev. 192.83
N.W. in G.P. Pole #189312 on S. side of
Washington St. @ First Baptist Church Prop.

Δ	2-18-77	Added W.H.C. (Approx. Loc. of Pool & Bathhouse)
No.	Date	Revision

For additional info see copy in field folder

BUREAU OF ENGINEERING INSPECTION AND SURVEY DIVISION	DEPARTMENT OF PUBLIC WORKS HOWARD COUNTY, MARYLAND	CONTRACT NO. 1631-D-W.15.	PLAN OF WATER AND SEWER MAINS	STORCH WOODS SECTION ONE SIXTH ELECTION DISTRICT SAVAGE, MARYLAND	DRAWING	SCALE	DWG - JHL
	5-12-75				NO. 2	A3	
	DATE				OF 3	SHOWN	

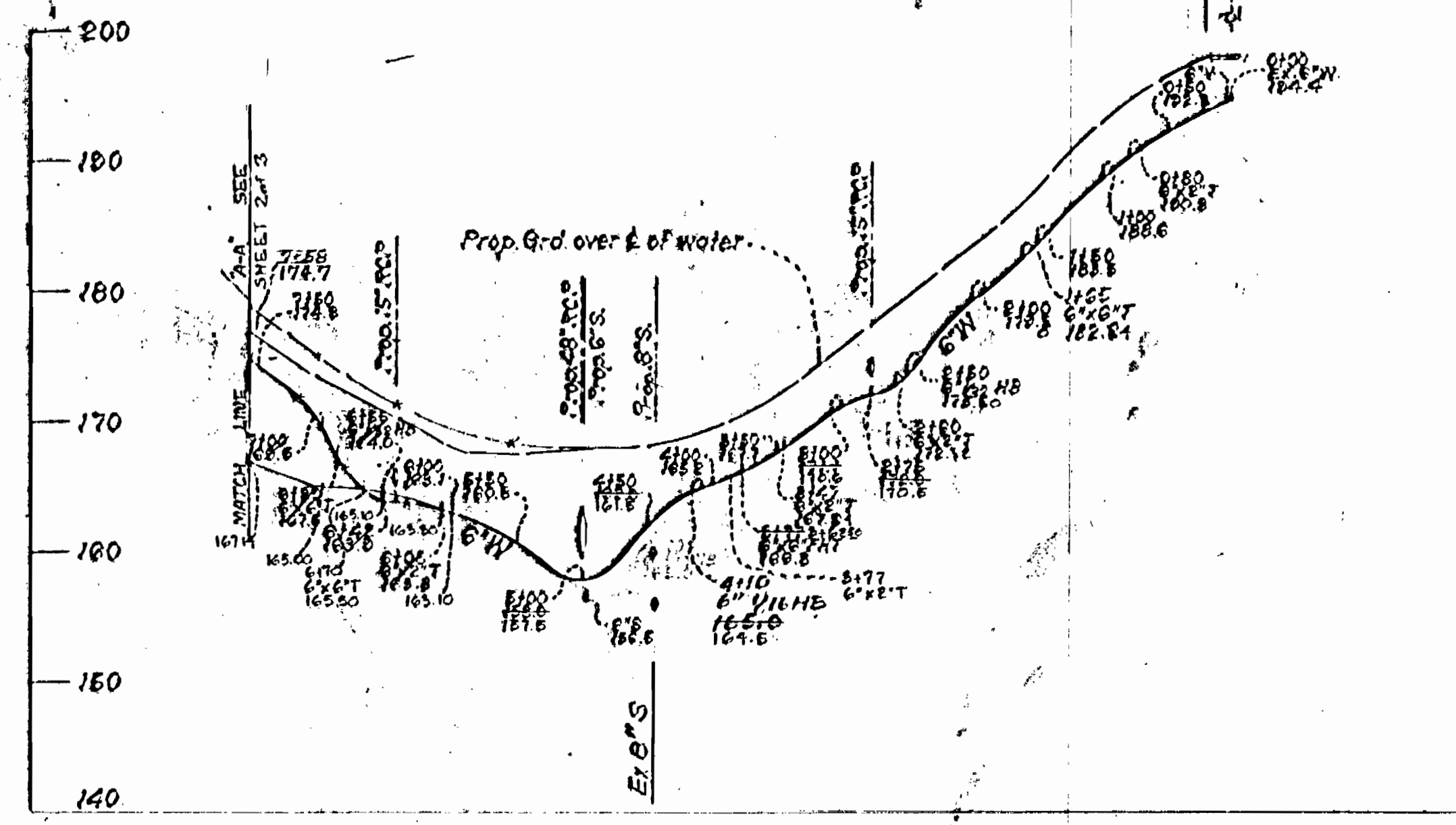
As Built 10-6-1977



PROFILE SCALE:
 Horiz. - 1"=100'
 Vert. - 1"=10'

NOTE: Δ

1. Connect existing inverts in Manhole #1586 using 6" Cast Iron Pipe with joint sealer to effect tight seal. This will afford a "Conduit" situation through this Manhole where it is being modified.
2. Backfill Manhole #1586 with 1 foot of concrete and remaining footage with select backfill material. Construct new channel and inverts for relocated 6" sewer line.
3. Manholes are to be constructed to finished grade, prior to final grading.
4. See profile for fill line for construction of 6" sewer between Ex-Manhole #1586 and proposed Manhole #1.
5. Final grading to be performed after the existing 6" sewer line is disconnected and a new 6" sewer line is put into operation.
6. Contractor shall notify Howard County, Bureau of Utilities (465-5000, Ext. 277) 48 hours prior to water connection and sewer relocation.



Phase I = 96 Units
 Phase II = 72 Units
 TOTAL = 168 Units

Phase	Year	Bldg.	No of Units
I	1974	1	12
		2	12
		3	12
		4	12
		5	12
		6	12
		7	12
		8	12
II	1975	9	12
		10	12
		11	12
		12	12
		13	12
		14	12



R. WAYNE KEELER & ASSOC., INC.
 CONSULTING CIVIL ENGINEERS
 416 HUNTERFORD DRIVE
 ROCKVILLE, MARYLAND 20850
 TELEPHONE: 301-782-2200

DEPARTMENT OF PUBLIC WORKS
 HOWARD COUNTY, MARYLAND
 DATE: 1-6-75
 W. O. Gilbert
 CHIEF BUREAU OF ENGINEERING

CONTRACT NO. X631-D-WIS

PROFILE OF
 WATER AND SEWER MAINS

For additional info see Copy in Field Folder

STORCH WOODS
 SECTION ONE
 SIXTH ELECTION DISTRICT
 BAVAGE, MARYLAND

DRAWING NO. 3 OF 3 SCALE AS SHOWN

As Built 10-6-1977