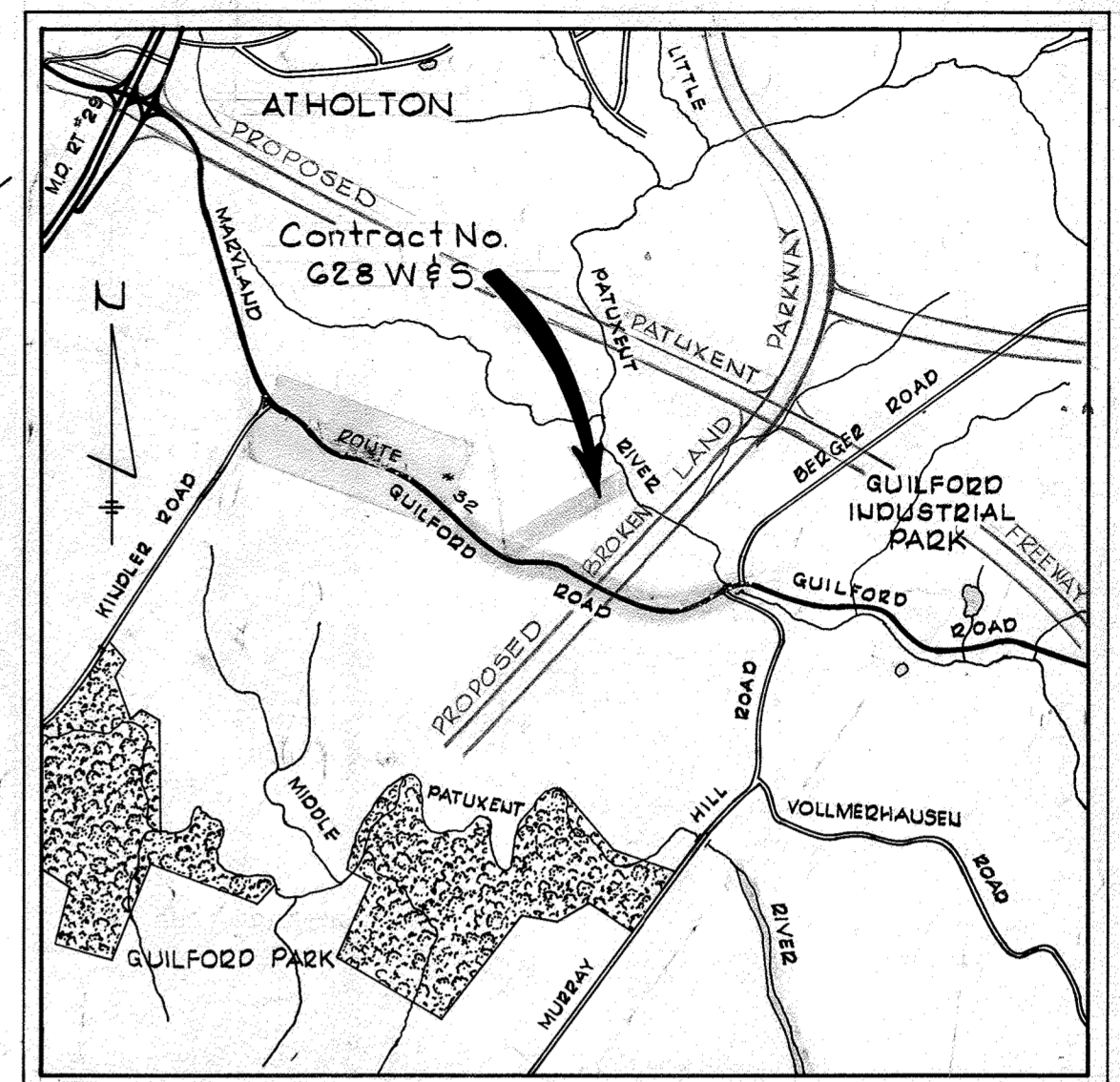
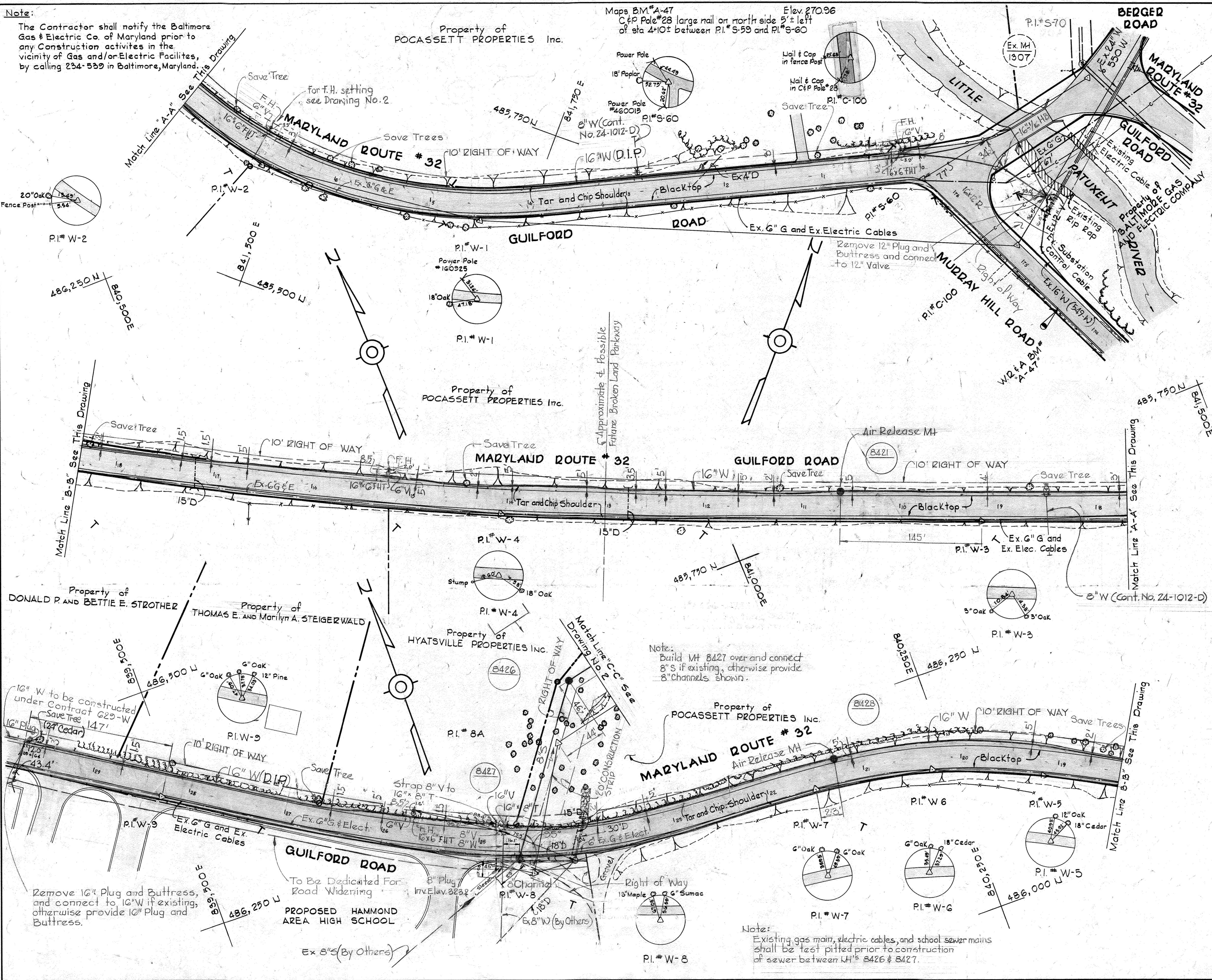


Note:

The Contractor shall notify the Baltimore Gas & Electric Co. of Maryland prior to any Construction activities in the vicinity of Gas and/or Electric Facilities, by calling 234-5339 in Baltimore, Maryland.

Maps B.M. #A-47
 C&P Pole #28 large nail on north side 5'± left of sta 4+10± between P.I. #S-59 and P.I. #S-60
 Elev. 270.96

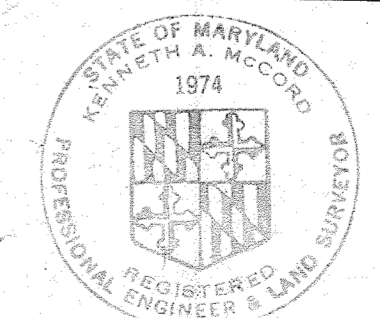


VICINITY MAP
 Scale: 1"=2000'

GENERAL NOTES

1. Approximate location of existing mains are shown. The Contractor shall take all necessary precautions to protect existing mains and services and maintain uninterrupted supply. Any damage incurred shall be repaired immediately.
2. All pipe elevations shown are invert elevations.
3. The Contractor shall locate existing utilities a minimum of two weeks in advance of construction operations in vicinity of utilities.
4. For all standard details see standards bound in Specifications.
5. Block all fittings with concrete, see standards bound in Specifications.
6. Clear all utilities by a minimum of 6", clear all poles by a minimum of 2'-0" or tunnel as required.
7. All water mains to have a minimum of 3/2' cover.
8. Payment for strapping fire hydrants and valves will be included in unit price bid for furnishing and laying water mains.
9. All fire hydrants shall be strapped and buttressed in accordance with standard details.
10. The Contractor shall provide a joint in all sewer mains within 2'-0" of exterior manhole walls.
11. All manholes to be 4'-0" inside diameter.
12. All horizontal and vertical controls are based on Maryland State Datum.
13. Trees are to be protected from damage to maximum extent.

QUANTITIES	
Item	Quantity
8" Sewer ACP	1,630 LF
6" Water DIP	20 LF
8" Water DIP	50 LF
16" Water DIP	3,110 LF
Fire Hydrants	4



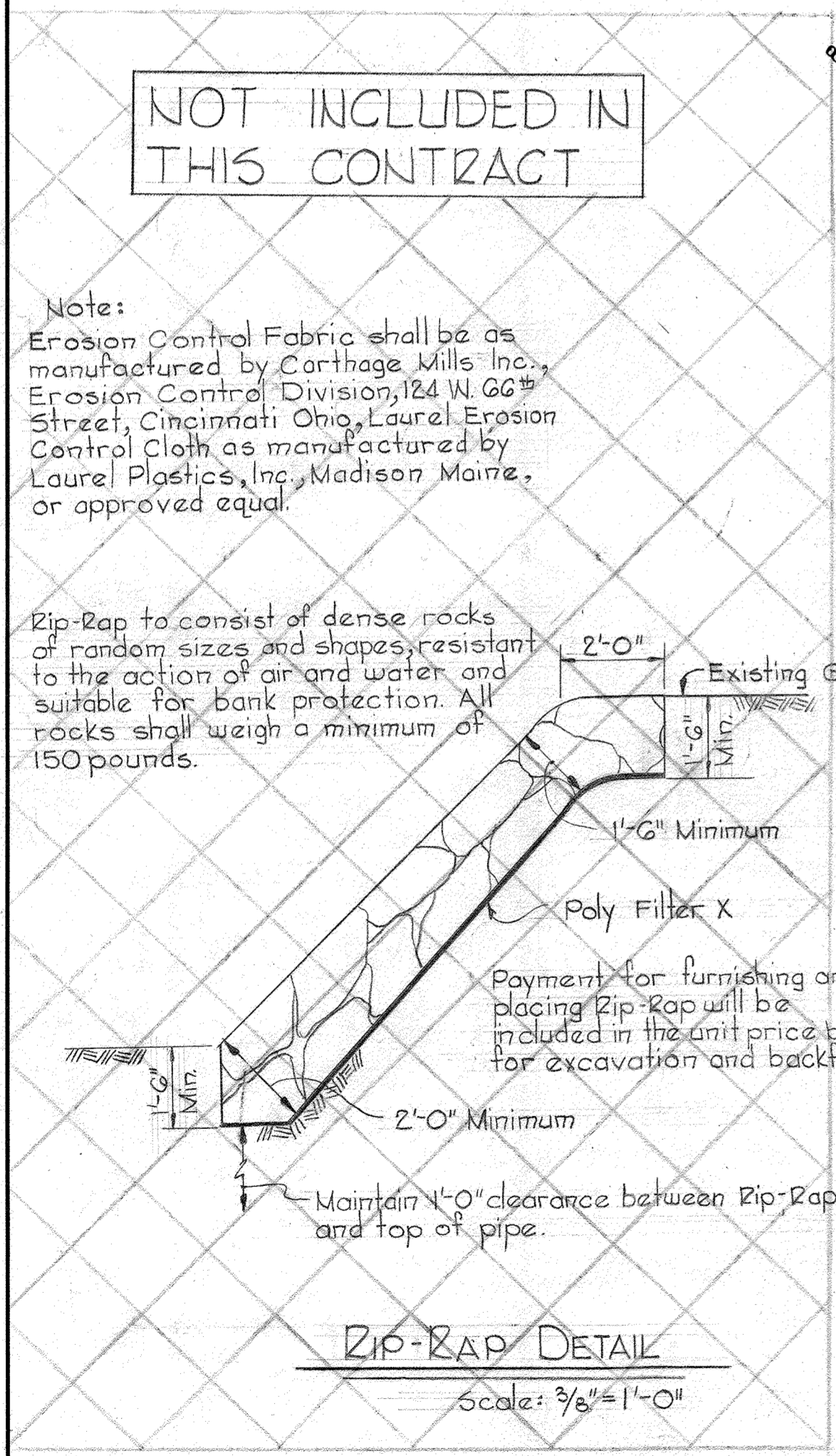
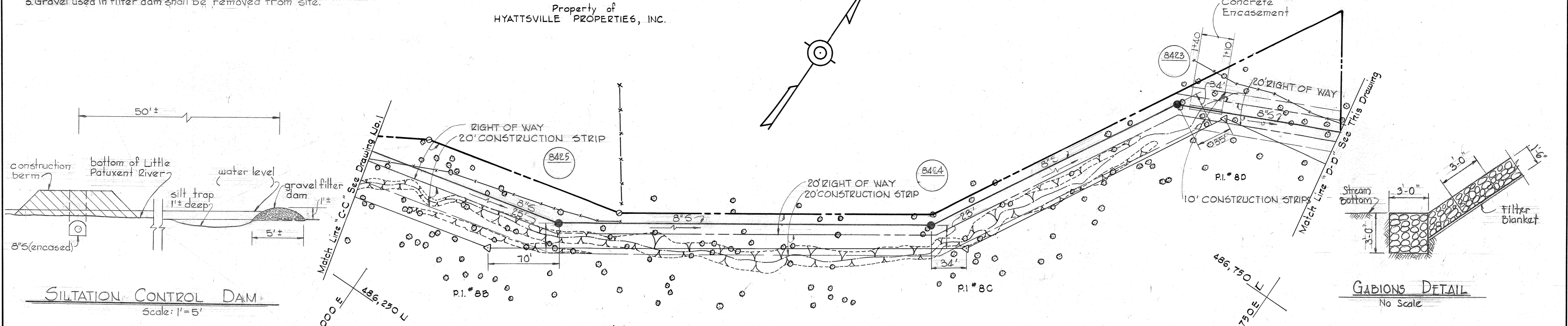
As Built
 Stakeout & Diary
 FB# 5840
 M.H. F.H. used

Hammond Area High School
 Contract No. G28-W&S

WHITMAN, REQUARDT & ASSOCIATES ENGINEERS 1304 ST. PAUL ST. BALTIMORE, MARYLAND	DEPARTMENT OF PUBLIC WORKS HOWARD COUNTY, MARYLAND 10-25-74 DATE	CONTRACT NO. G28 W&S	PLAN OF WATER AND SEWER MAINS	ELECTION DISTRICT GUILFORD NO. 6	DRAWING NO. 1 OF 3 SCALE 1"=50'
--	---	----------------------	----------------------------------	-------------------------------------	------------------------------------

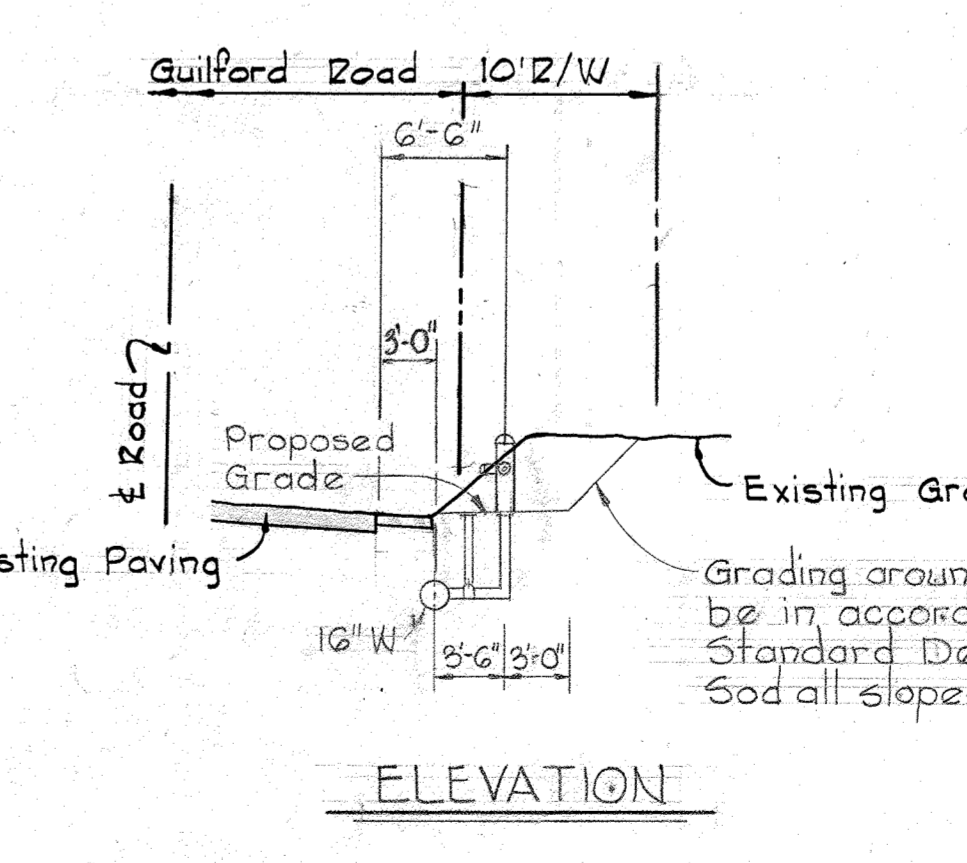
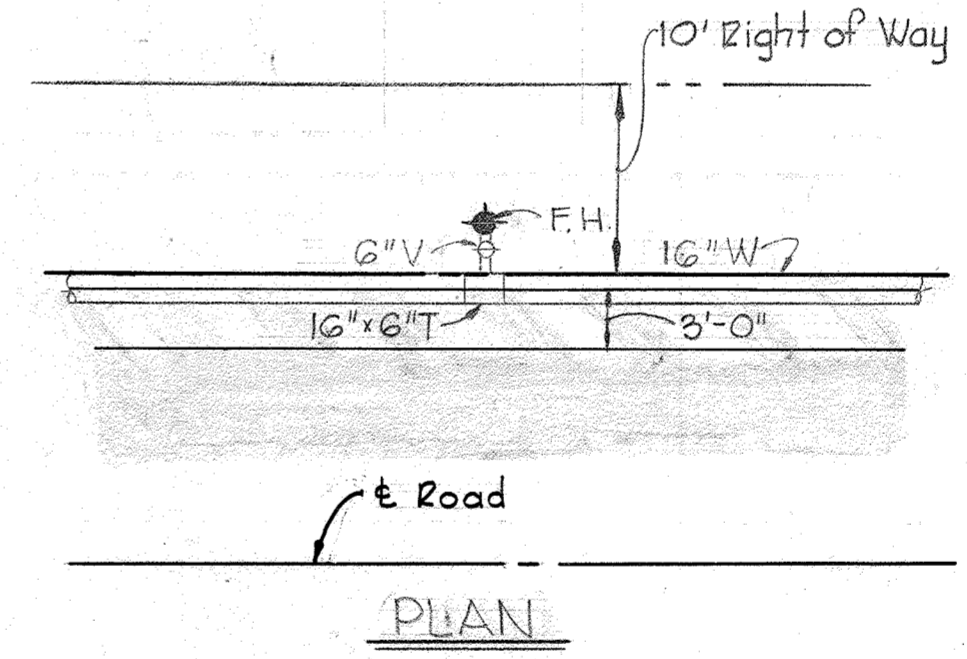
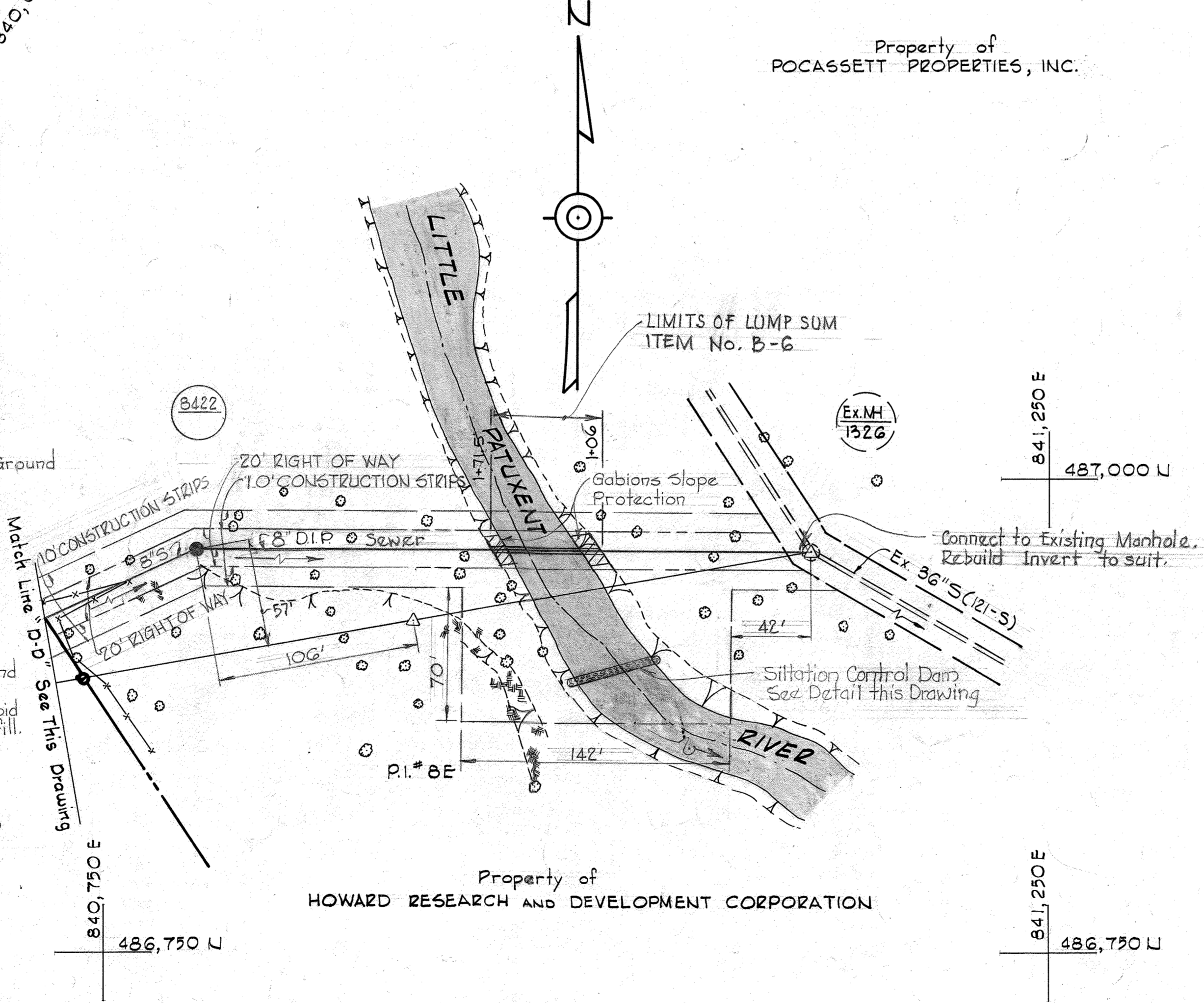
Notes:

1. Gravel filter dam shall be placed in river before any fill is made for a construction berm and shall be maintained until the berm is removed and Gabions are in place on river banks.
2. All silt trapped by filter dam shall be removed from river bottom and disposed of off site prior to removal of gravel filter dam.
3. Gravel used in filter dam shall be removed from site.

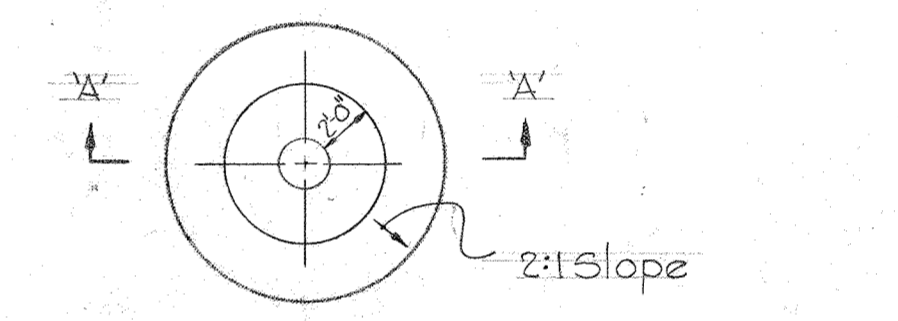


Note:
Erosion Control Fabric shall be as manufactured by Carthage Mills Inc., Erosion Control Division, 124 W. 66th Street, Cincinnati Ohio, Laurel Erosion Control Cloth as manufactured by Laurel Plastics, Inc., Madison Maine, or approved equal.

Zip-Rap to consist of dense rocks of random sizes and shapes, resistant to the action of air and water and suitable for bank protection. All rocks shall weigh a minimum of 150 pounds.



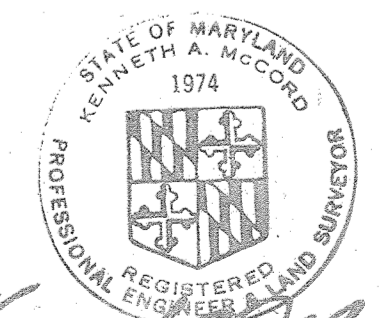
GABIONS DETAIL
No Scale



SECTION 'A-A'
FILL AT MANHOLE NO. 8422, 8423, 8424, 8425 & 8426
Scale: 1/8" = 1'-0"

F.H. SETTING AT RD. STA. 6+82
Scale: 1" = 10'

As Built
Stakeout & Diary
FB# 5840



Kenneth M. Melrod

Hammond Area High School
Contract No. 628 W&S

WHITMAN, REQUARDT & ASSOCIATES ENGINEERS 1304 ST. PAUL ST. BALTIMORE, MARYLAND	DEPARTMENT OF PUBLIC WORKS HOWARD COUNTY, MARYLAND 10-25-74 DATE	CONTRACT NO. 628-W&S W.O. Silber CHIEF BUREAU OF ENGINEERING	PLAN AND DETAILS OF WATER AND SEWER MAINS	ELECTION DISTRICT GUILFORD NO. 6	DRAWING NO. 2 OF 3	SCALE AS SHOWN
					AS BUILT	AS BUILT

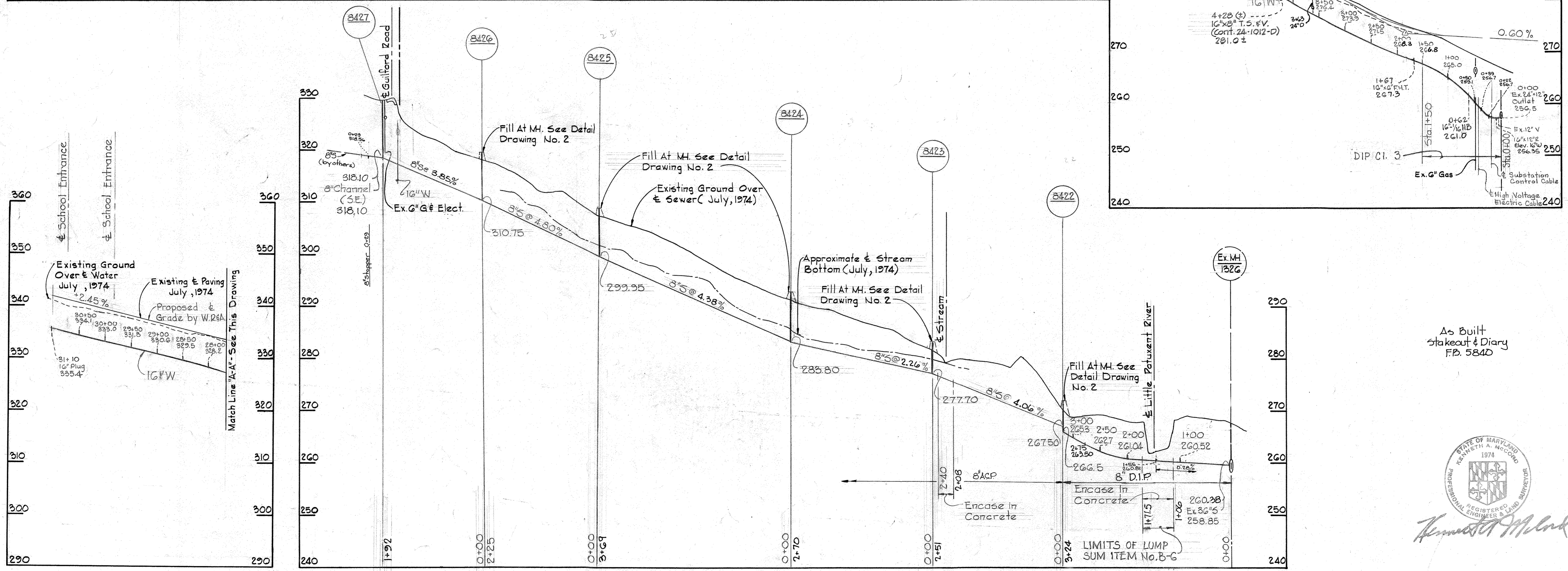
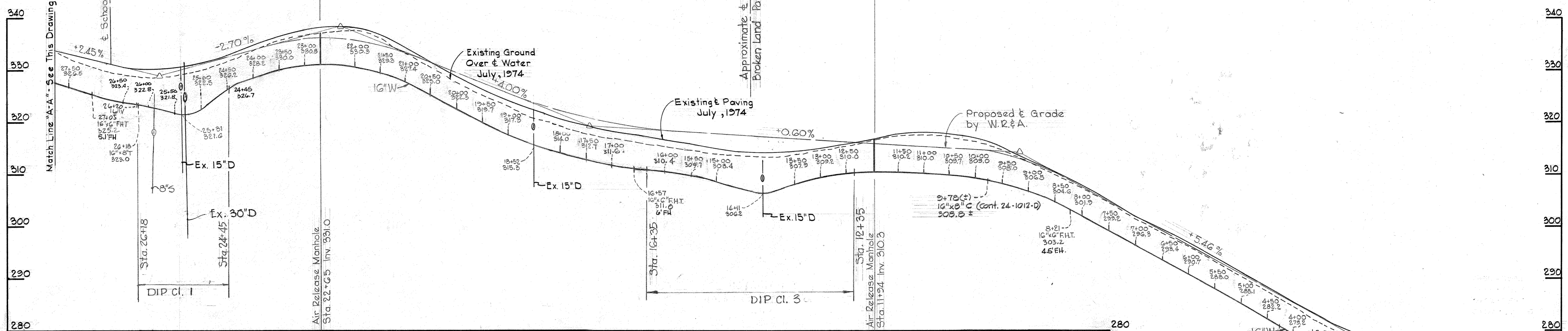
W. O. 6934-2

FB# 5629, 5630, 5657
September 23, 1976

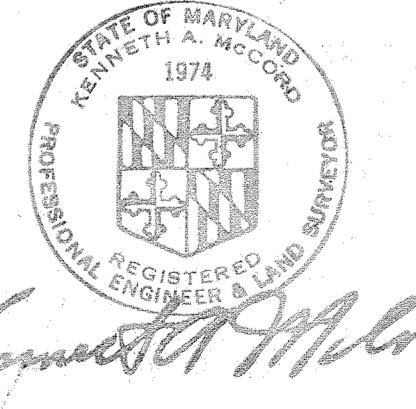
WS 628-W&S/2

BRUNING 44-510 1839Z

WS 628-W&S/3



As Built Stakeout & Diary FB. 584D



Kenneth A. McLeod

Hammond Area High School
Contract No. 628 W&S

WHITMAN, REQUARDT & ASSOCIATES ENGINEERS 1304 ST. PAUL ST. BALTIMORE, MARYLAND	DEPARTMENT OF PUBLIC WORKS HOWARD COUNTY, MARYLAND 10-25-74 DATE	CONTRACT NO. 628-W&S	PROFILES OF WATER MAINS	ELECTION DISTRICT GUILFORD NO. 6	DRAWING	SCALE
					NO. 3	H. 1" = 100'
					OF 3	V. 1" = 10'

W. O. 6934-2

FB. 5629, 5630, 5657
September 23, 1976 AS BUILT

ENGINEERING 44-510 18282